



2020 *Wiz* Web Map Enhancements

December 2020



Wolters Kluwer

Today's Presenters



Mindy Marchetti
Senior Product Manager
Wolters Kluwer



Matt Marek
Director, Technology
Product Management
Wolters Kluwer

Wiz Web Map – 2020 Enhancements

Overview

In 2020, Wolters Kluwer & Policy Map have partnered to upgrade the web map functionality in *Wiz* solutions. In addition to general Policy Map platform upgrades, Wolters Kluwer has invested in the customizing the *Wiz* user experience to make it more specific to the needs of users performing CRA, HMDA and fair lending analysis.

Beginning on Thursday, December 10th, 2020 licensed *Wiz* users now have access to two versions of Web Map; the current version they use today, and a beta version that will provide a preview of exciting enhancements that will be released in Q1 2021. *Wiz* users can create maps in either version but should note that the beta version is still “under construction” and in some instances key functionality may not be available. An example would be the ability to save your work. Saved map functionality is not currently available in the beta version but is on the product roadmap for early 2021.

Wolters Kluwer is providing users access to the beta version of the Web Map to allow users to familiarize themselves with the updated version in advance of its “go live” date. In Q1 2021, Wolters Kluwer will formally “flip the switch” so that all users are transitioned to the new version. At this time, the version of Web Map that you use today will no longer be available. As part of this transition your institution’s saved maps, custom areas and *Wiz* assessment areas and data files seamlessly migrated to the new version.

Agenda

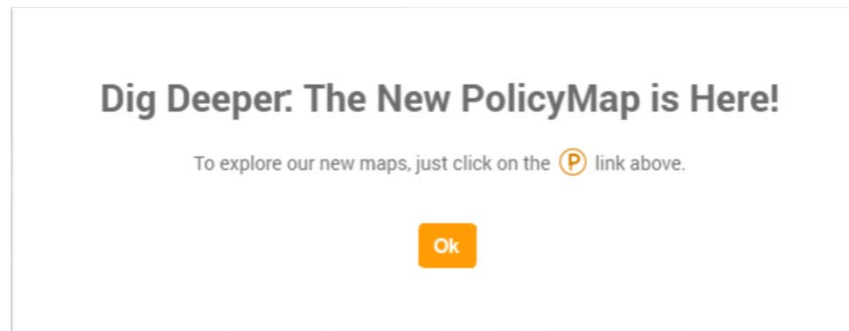
- Introduction
- Navigation
- Changes to Commonly Used Functionality
- 2020 *Wiz* Specific Enhancements
- Additional Resources



Navigation

Accessing the Next Generation of Web Map

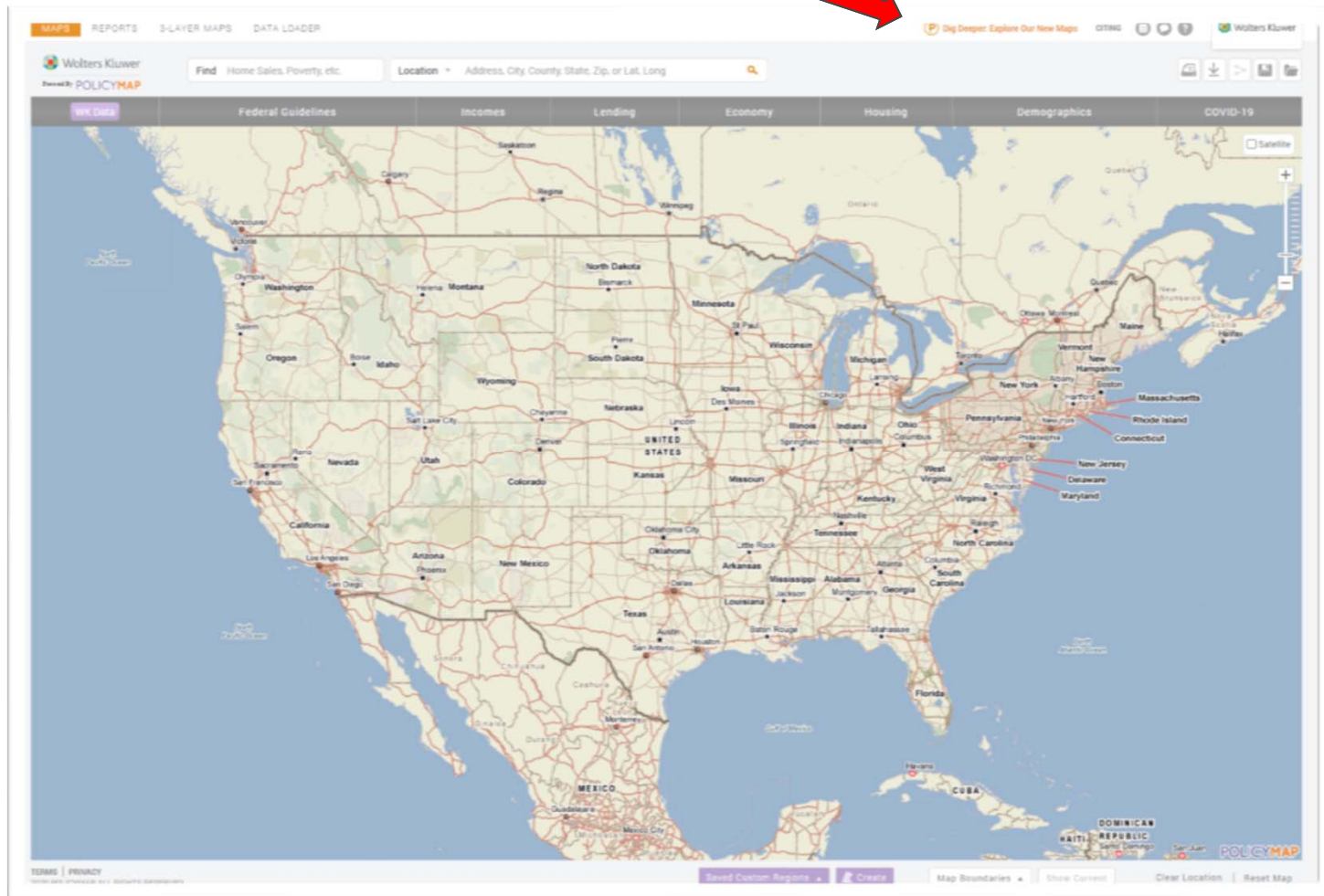
1. Log into *Wiz*, and select Web Map in CRA *Wiz* & Fair Lending *Wiz* or Map in CRA *Wiz* SaaS, HMDA *Wiz*
2. Log into Web Map, you will see the following prompt



3. Click **Ok** to continue

Accessing the Next Generation of Web Map

4. Click **Dig Deeper: Explore Our New Maps**



Accessing the Next Generation of Web Map

Dig in and explore the Beta version of the new PolicyMap!

This beta version includes:

- Contemporary mapping platform, building footprints, 22 zoom levels and 3D maps
- New trend charts available by clicking on the map
- Deeper analytics with Multi-Layer Mapping
- Fluid custom region builder that also allows you to save and edit regions

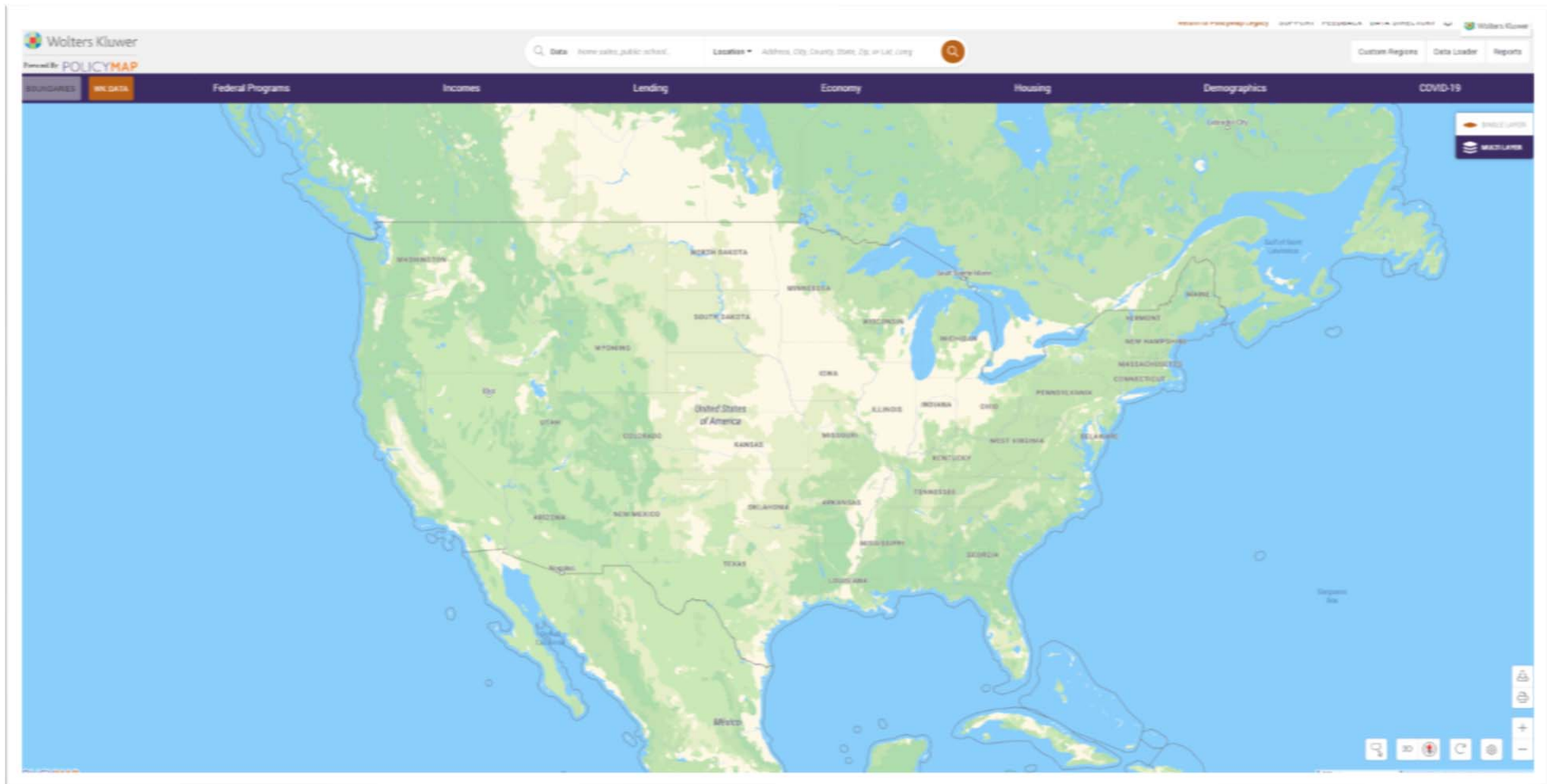
[Visit our support page](#) to learn more about these features!

The New PolicyMap is currently optimized for Google Chrome only and all PolicyMap features are not yet in the beta release. You can easily toggle between the two versions.

[Sign up](#) for our newsletter to stay on top of upcoming releases.

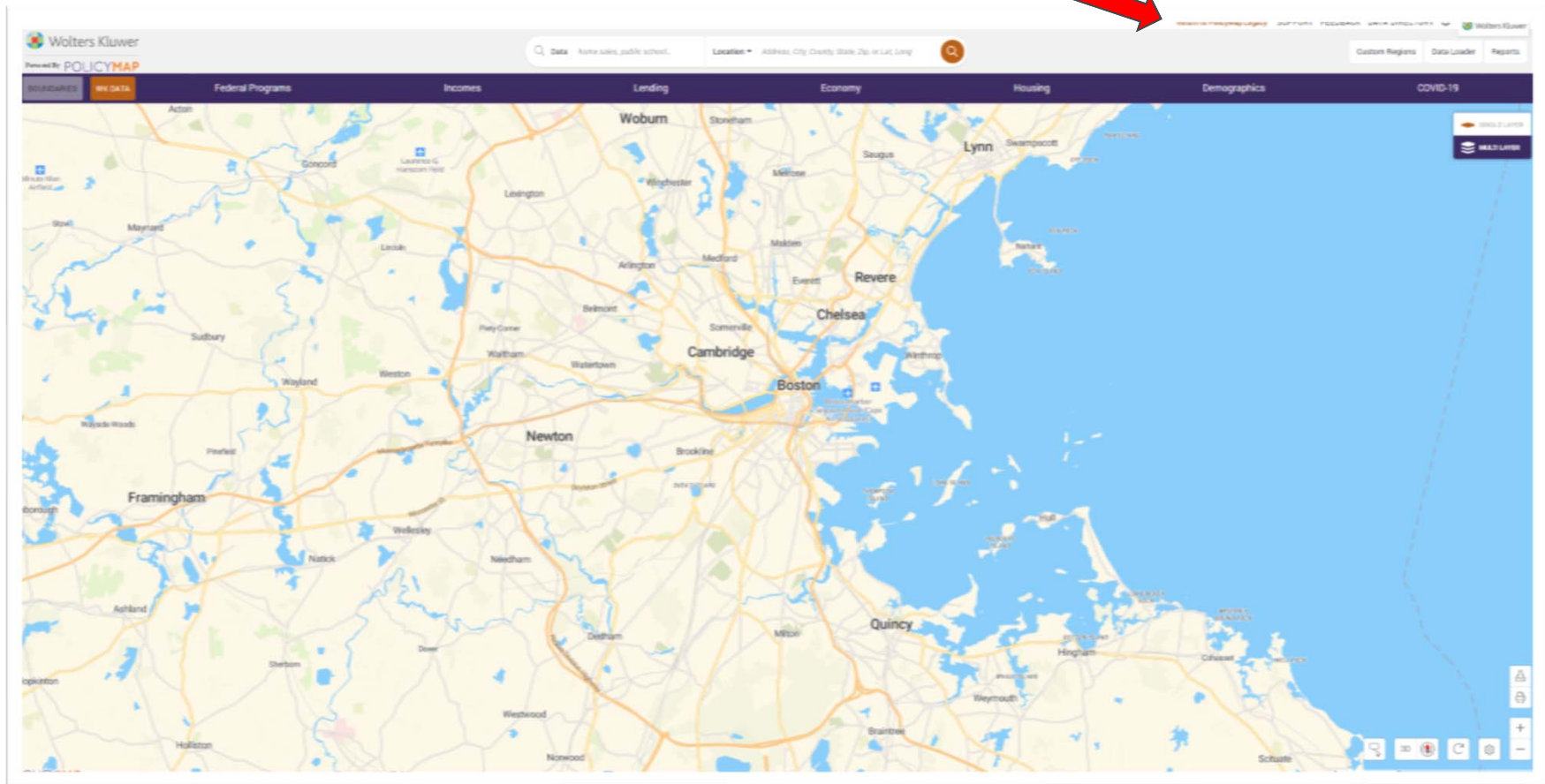
CancelTake Me There

You have arrived...



Want to go back to the old version?

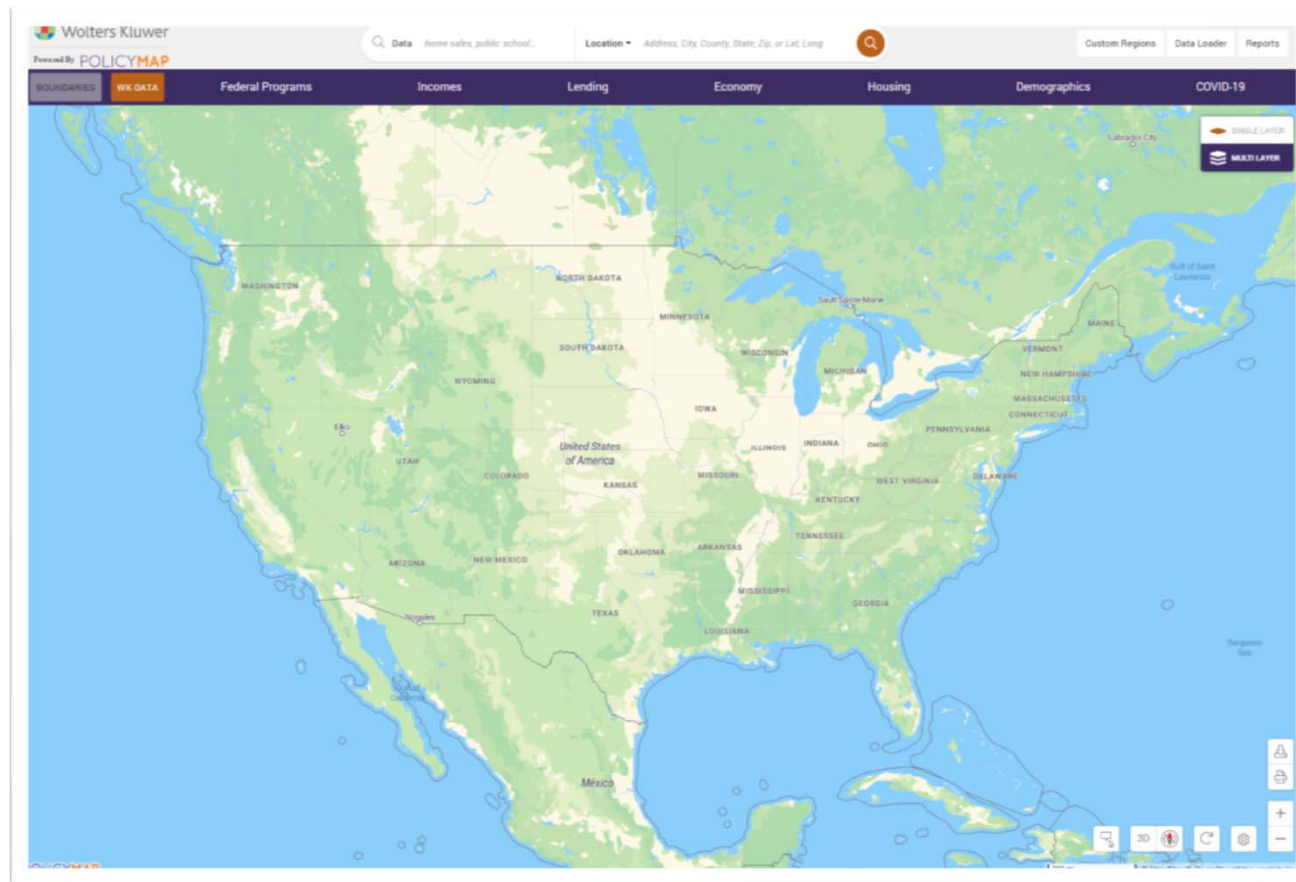
Click **Return to PolicyMap Legacy**



Changes to Commonly Used Functionality

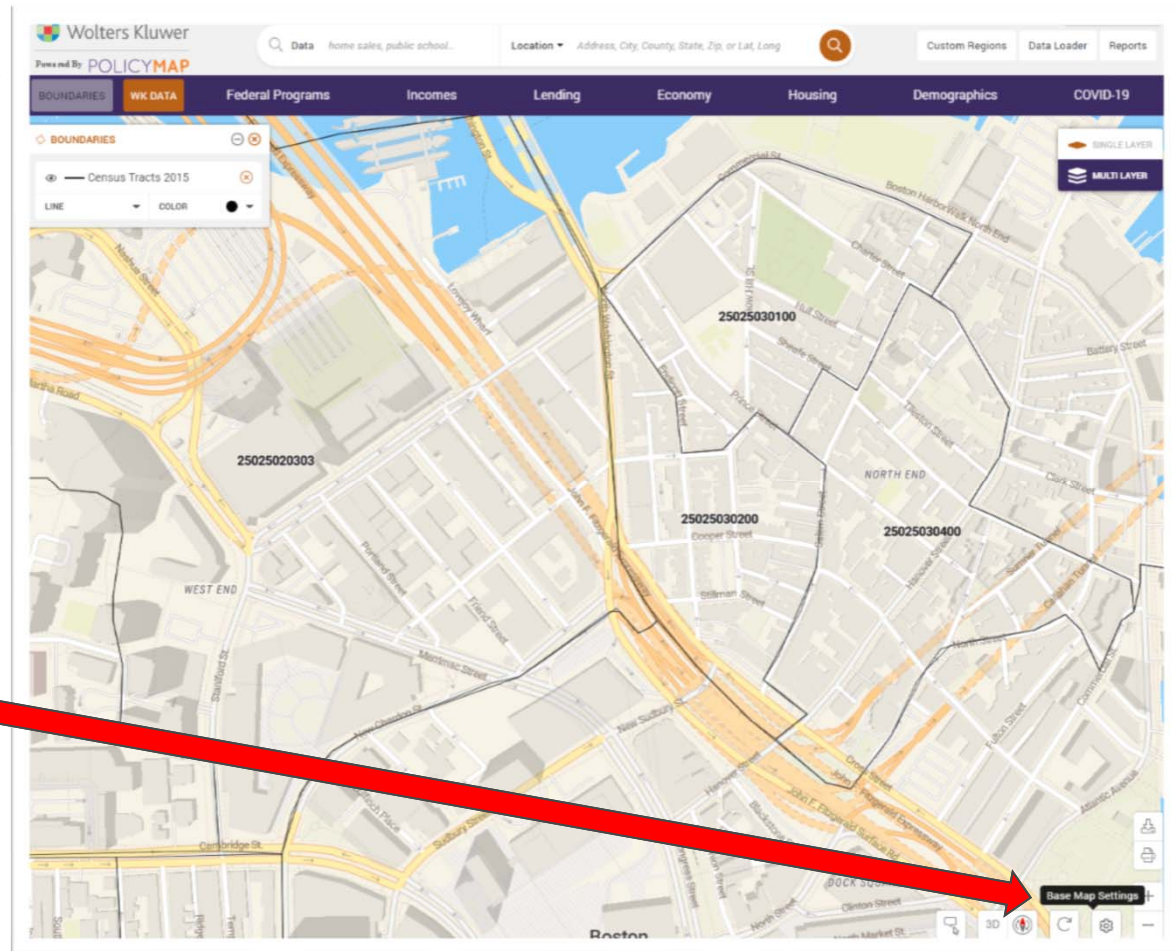
Changes to Commonly Used Functionality

- Map Boundaries
- Map Settings
- WK Data
- Reports
- Data Loader
- Custom Regions
- Satellite View
- Print
- Zoom
- Clear Location
- Reset Map
- Data Downloader



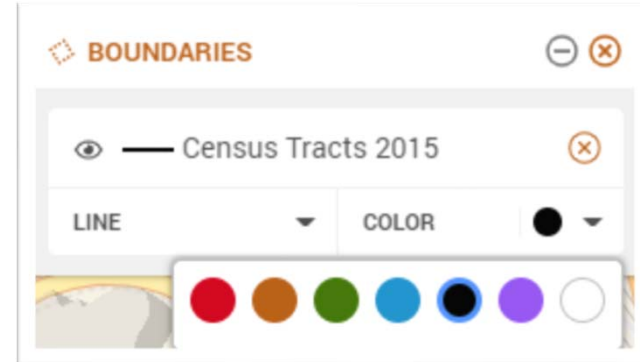
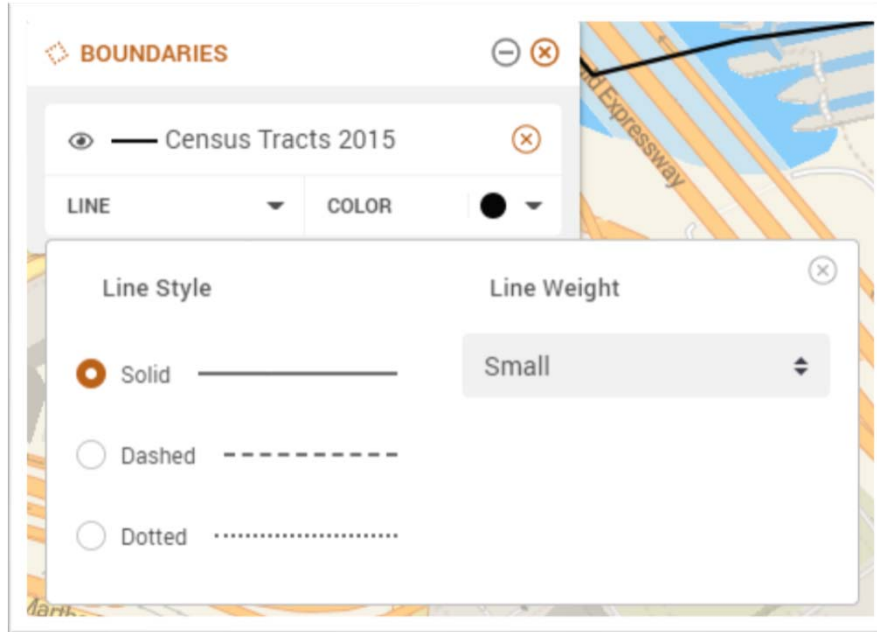
Enhanced Map Boundaries & Map Settings

- **Map Boundaries** → renamed **BOUNDARIES** and has been relocated to the upper left-hand corner
- **New Base Map Settings**
Change display settings for and use map layers like Hospitals, Towns, Parks, Water, and Schools with the **Base Map Settings** button available in the lower right-hand corner



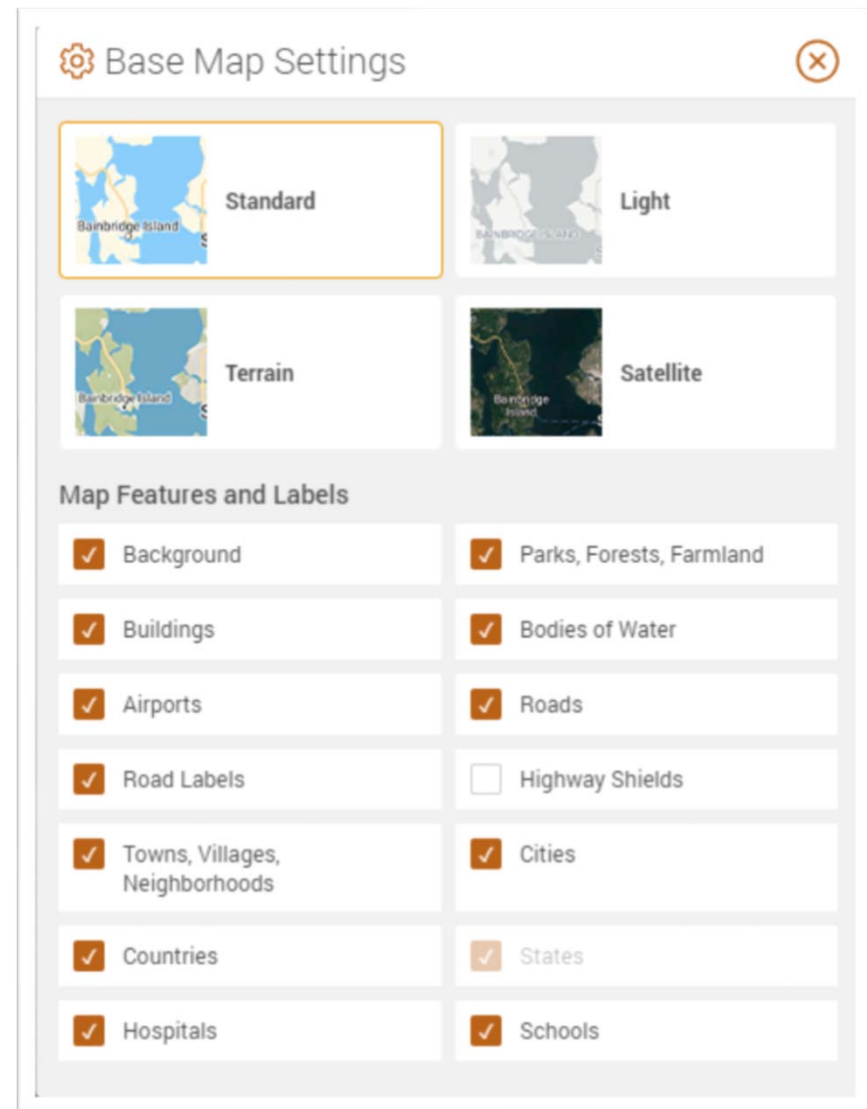
Map Boundaries Settings

- New options to customize the way map layers display
 - ✓ Line Style
 - ✓ Line Weight
 - ✓ Color

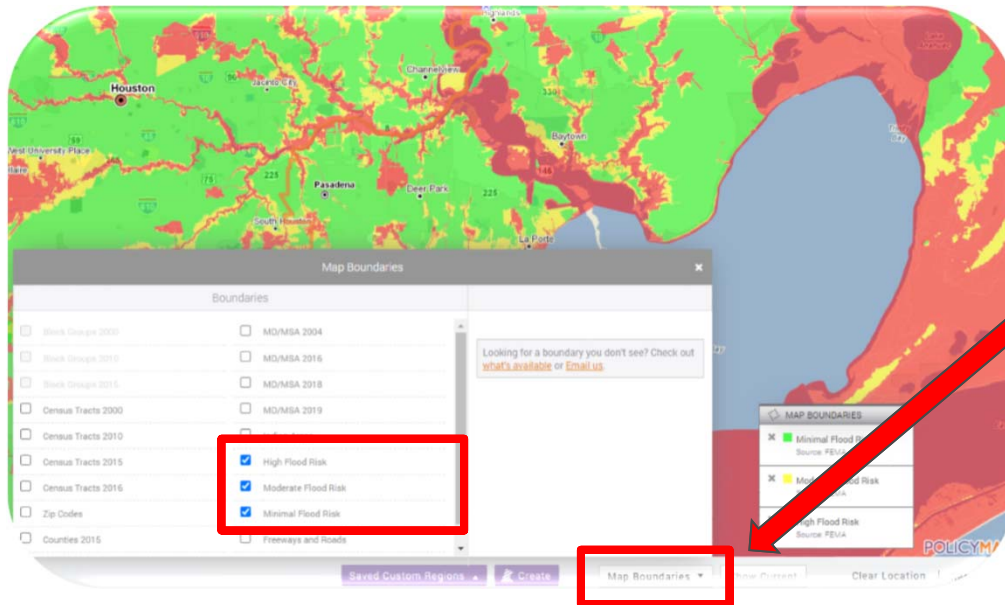


Base Map Settings

- Map Views
 - Standard
 - Terrain *(Coming soon!)*
 - Light *(Coming soon!)*
 - Satellite *(Coming soon!)*
- Map Features and Labels
 - Enable/disable undesired layers
 - New layers
 - Background
 - Buildings
 - Airports
 - Road Labels
 - Towns, Villages, Neighborhoods
 - Countries
 - Hospitals
 - Parks, Forests, Farmland
 - Bodies of Water
 - Roads
 - Highway Shields
 - Cities
 - States
 - Schools

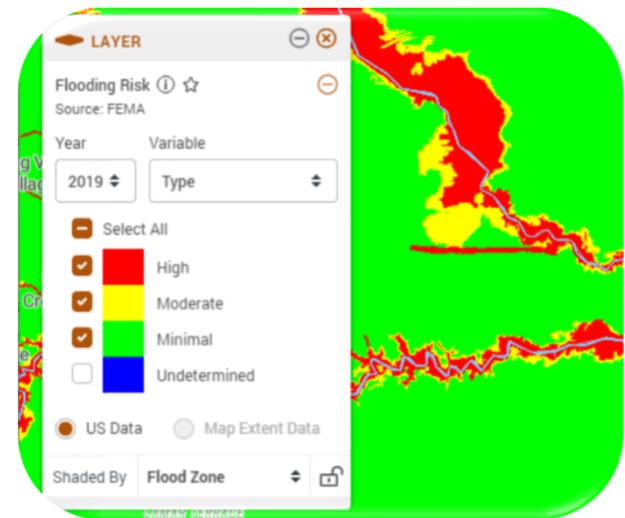
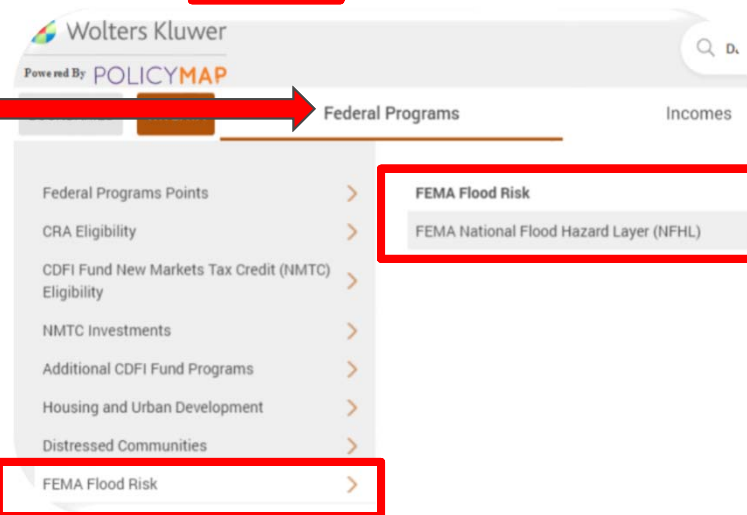


Flood Risk Data Relocated



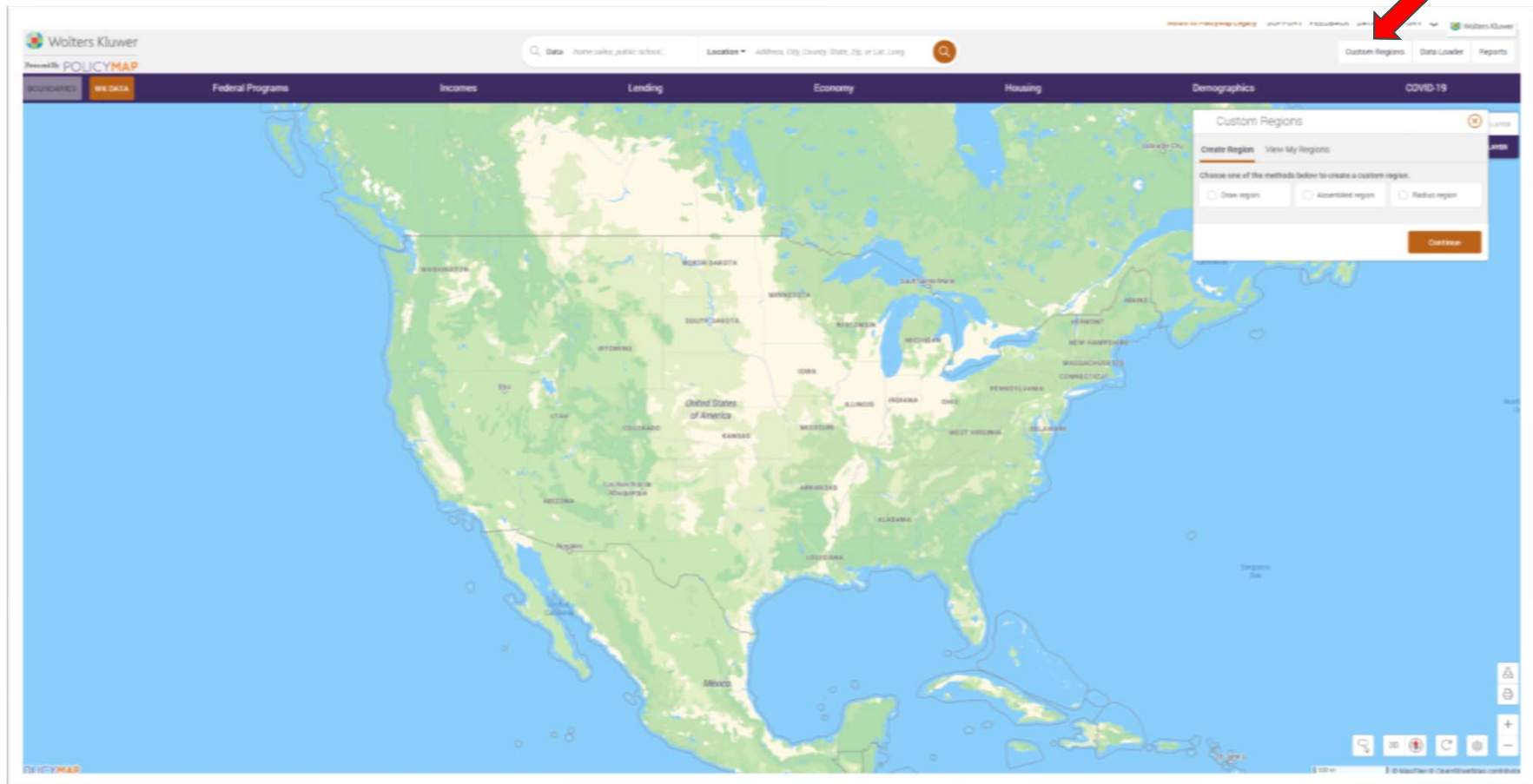
Current State - Map Boundaries

Future State Federal
Programs > FEMA
Flood Risk



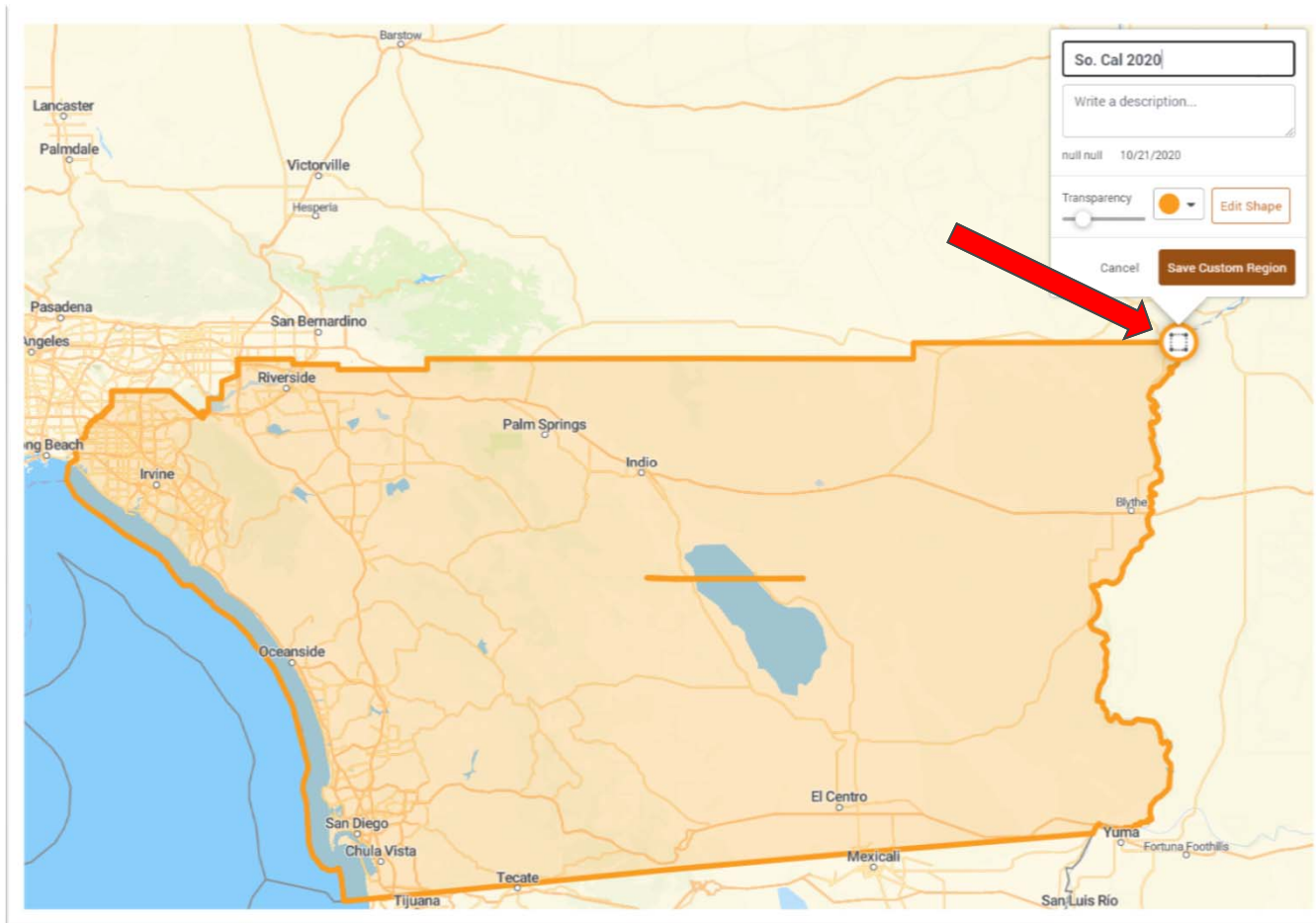
Custom Regions

- **Create Custom Region & Saved Custom Regions** have moved to the new **Custom Regions** button.
- **Saved Custom Regions** has changed to **View My Regions** and has moved to a second tab on this menu.



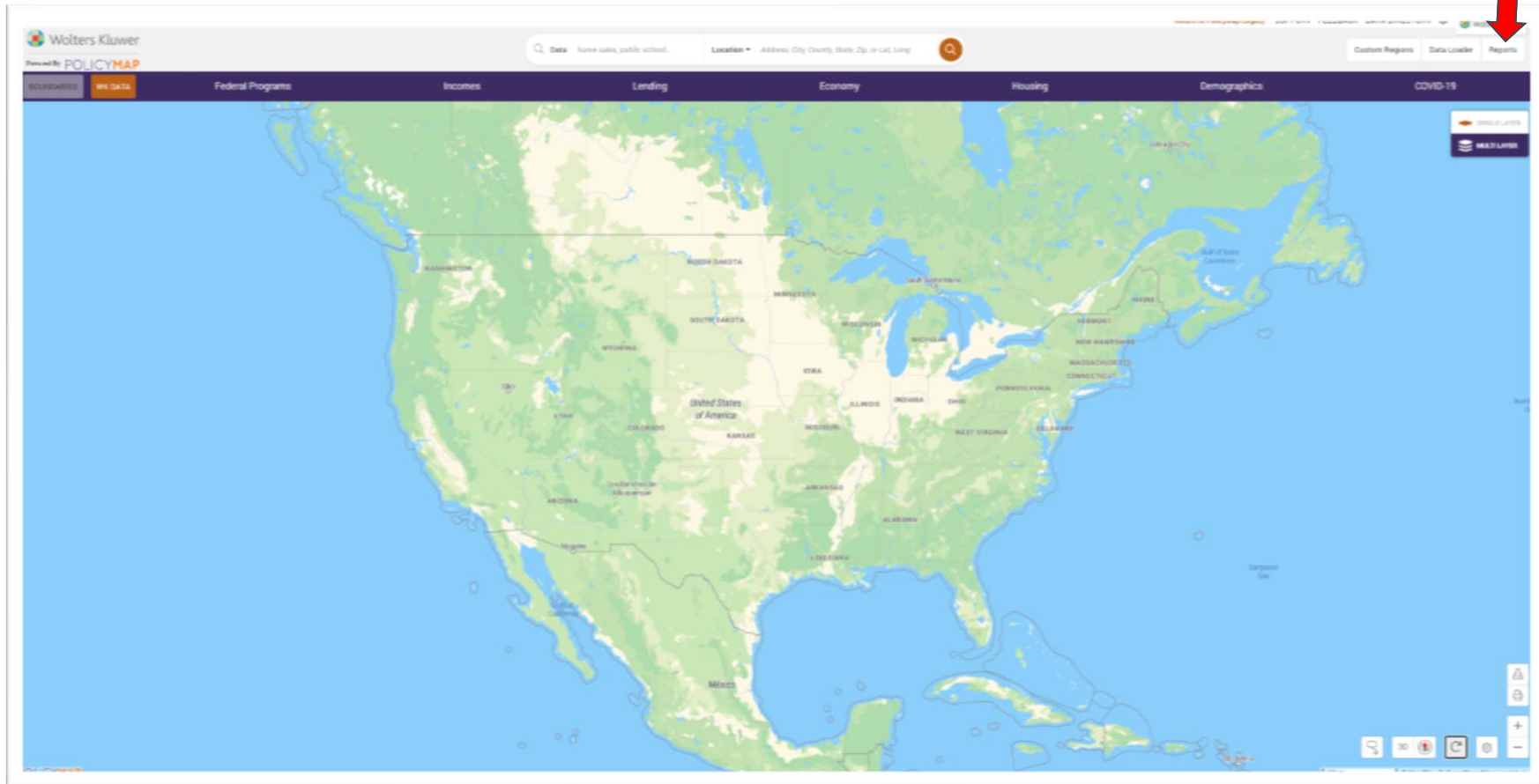
Custom Regions

- To change the display settings for a custom region, locate the circle with the square inside it along the perimeter or your region. Click on it to update the area's name, description, transparency, and color.



Reports

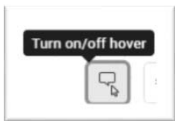
- New location, same reports: Community Profile Report, Home Mortgage Report



Additional Map Tools

A new set of map tools are available in the lower right-hand corner of the map

- **Turn on/off hover**



- When enabled, users will see tooltip information when they hover their mouse over an area
- Enabled by default

- **3D**

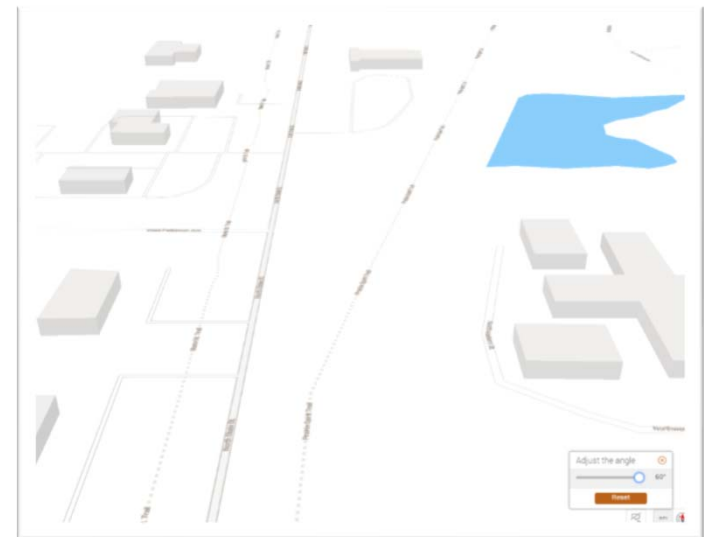


- Adjust the tilt of the map
- Tip!** Great option to with the **Buildings** layer available in **Map Settings**

- **Rotate the View**



- Change the orientation of the map



Additional Map Tools

- **Data Downloader**



- Download geographic data for a specific geography

- **Print**



- Set desired display options, add a map title, export to .PDF

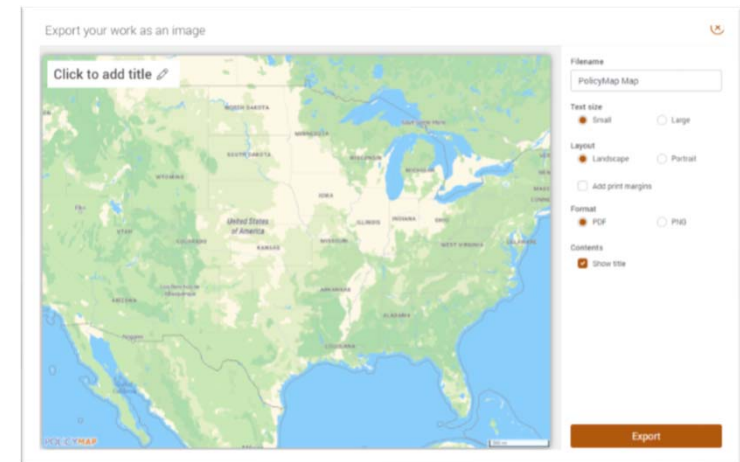
- **Zoom**



- 10 zoom levels added

- **Reset Map**

- New button to reset your map area



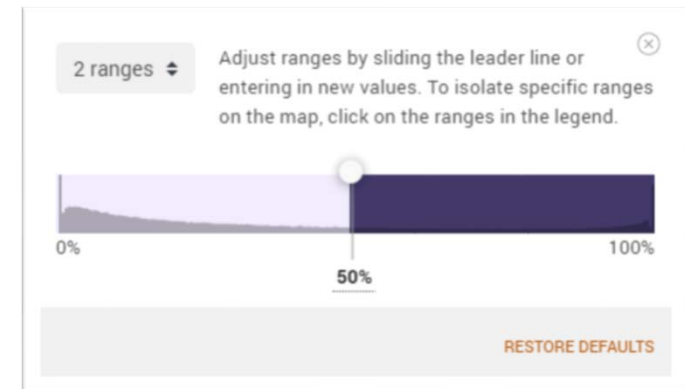
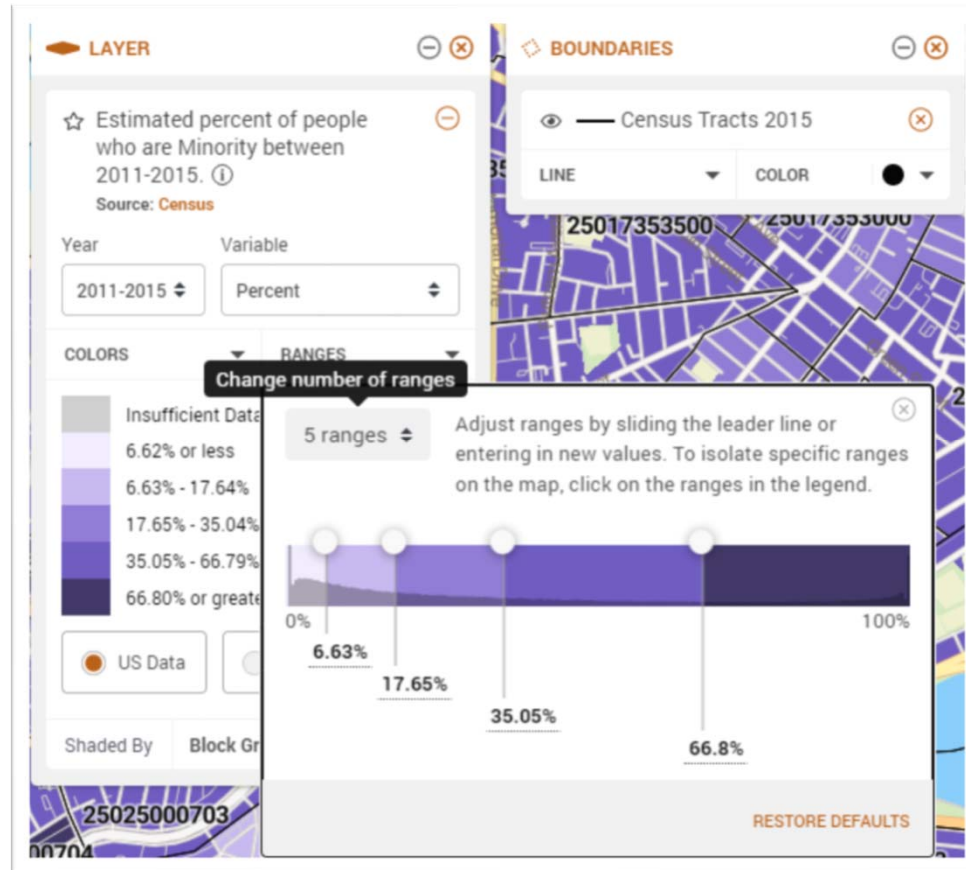
Enhancements and Upgrades



Wolters Kluwer

Customizing Demographics Ranges

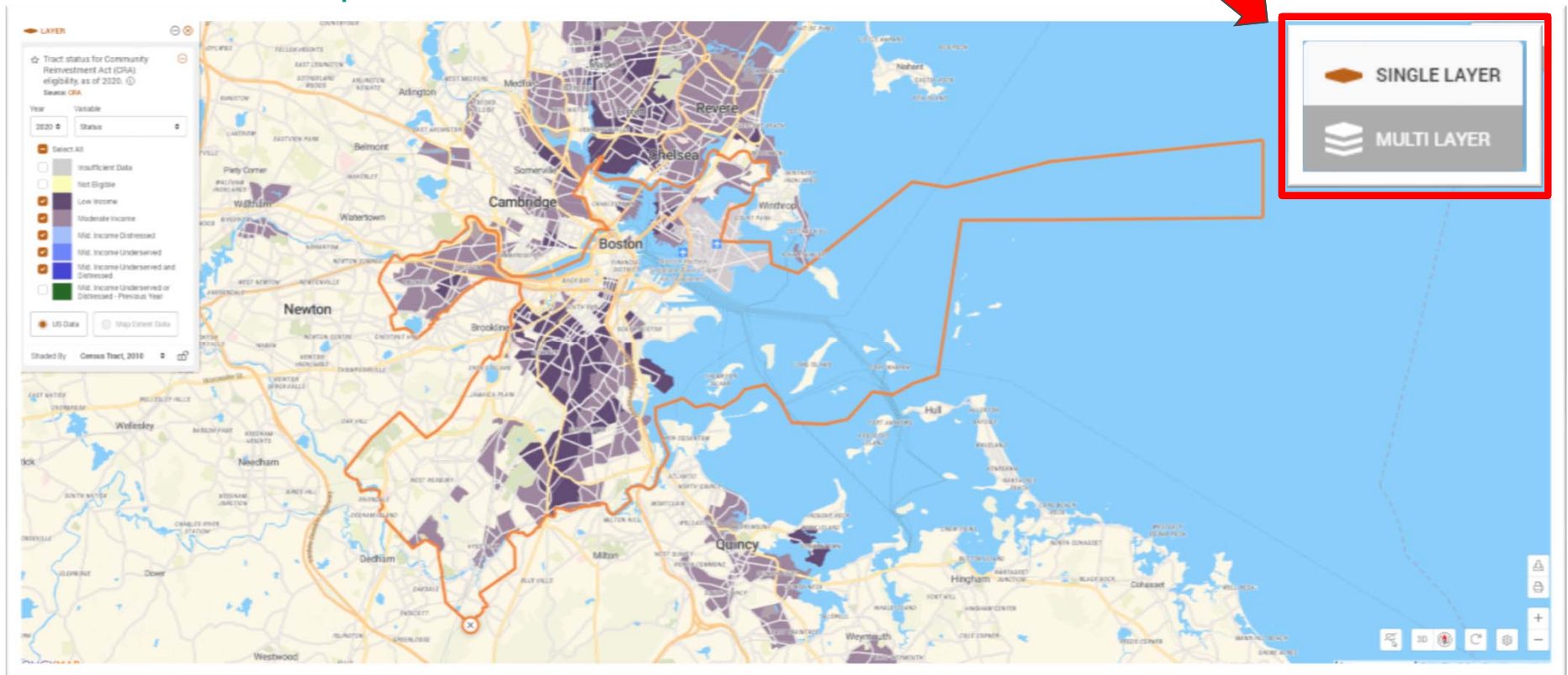
- Customize ranges with new slider functionality



Single Layer & Multi-Layer Maps

- New options in the upper-right hand corner: SINGLE LAYER, MULTI LAYER
SINGLE LAYER = Display one demographic
MULTI LAYER = Display up to five demographics with **AND/OR** conditions

SINGLE LAYER Map



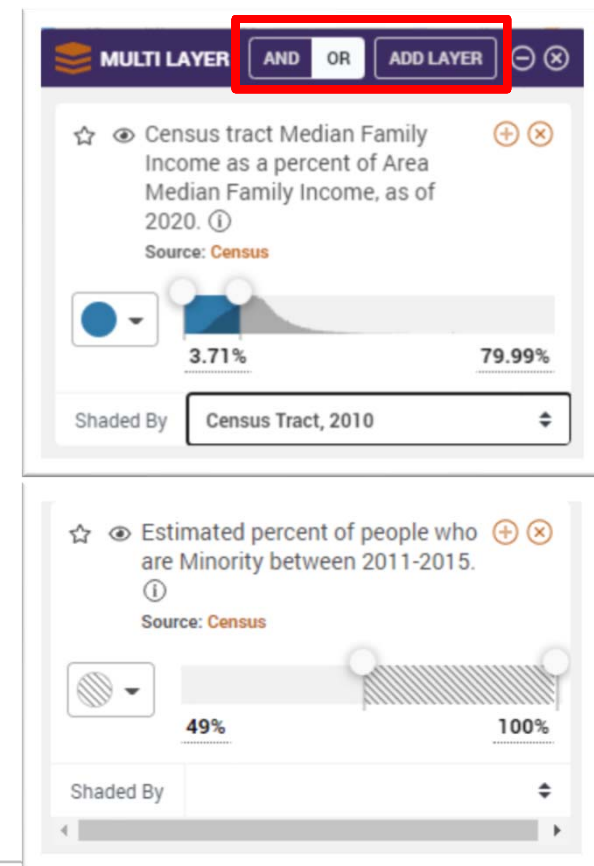
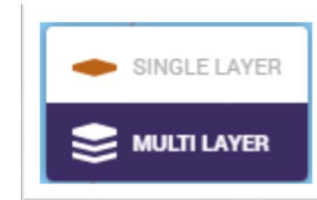
Creating with Multi-Layer Maps

1. Change the selection in the upper right-hand corner from **SINGLE LAYER** to **MULTI LAYER**
2. Select the first demographic and set desired ranges
3. Select **ADD LAYER** button
4. Consider **AND / OR** criteria
5. Select second demographic and set desired ranges
6. Choose colors and display preferences
7. Repeat steps 3-6 for additional demographics selected

AND = Multiple conditions must be true

OR = Either condition could be true

Use the **OR** criteria to display demographics separately with multiple display options (example: shading, transparent pattern)



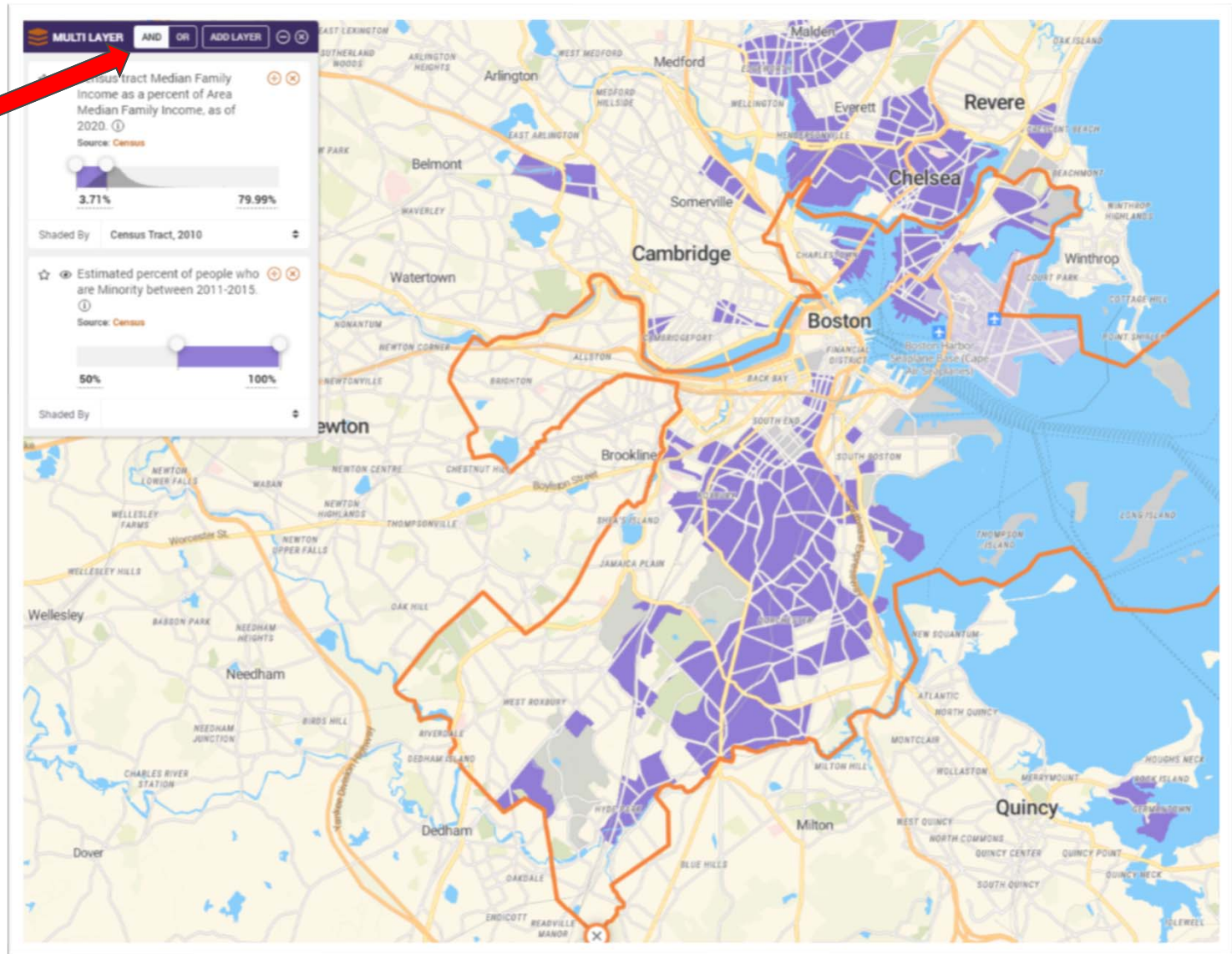
Multi-Layer Maps: AND

2 Demographics

- Low- & Moderate-Income Census Tracts

AND

- Majority Minority Census Tracts



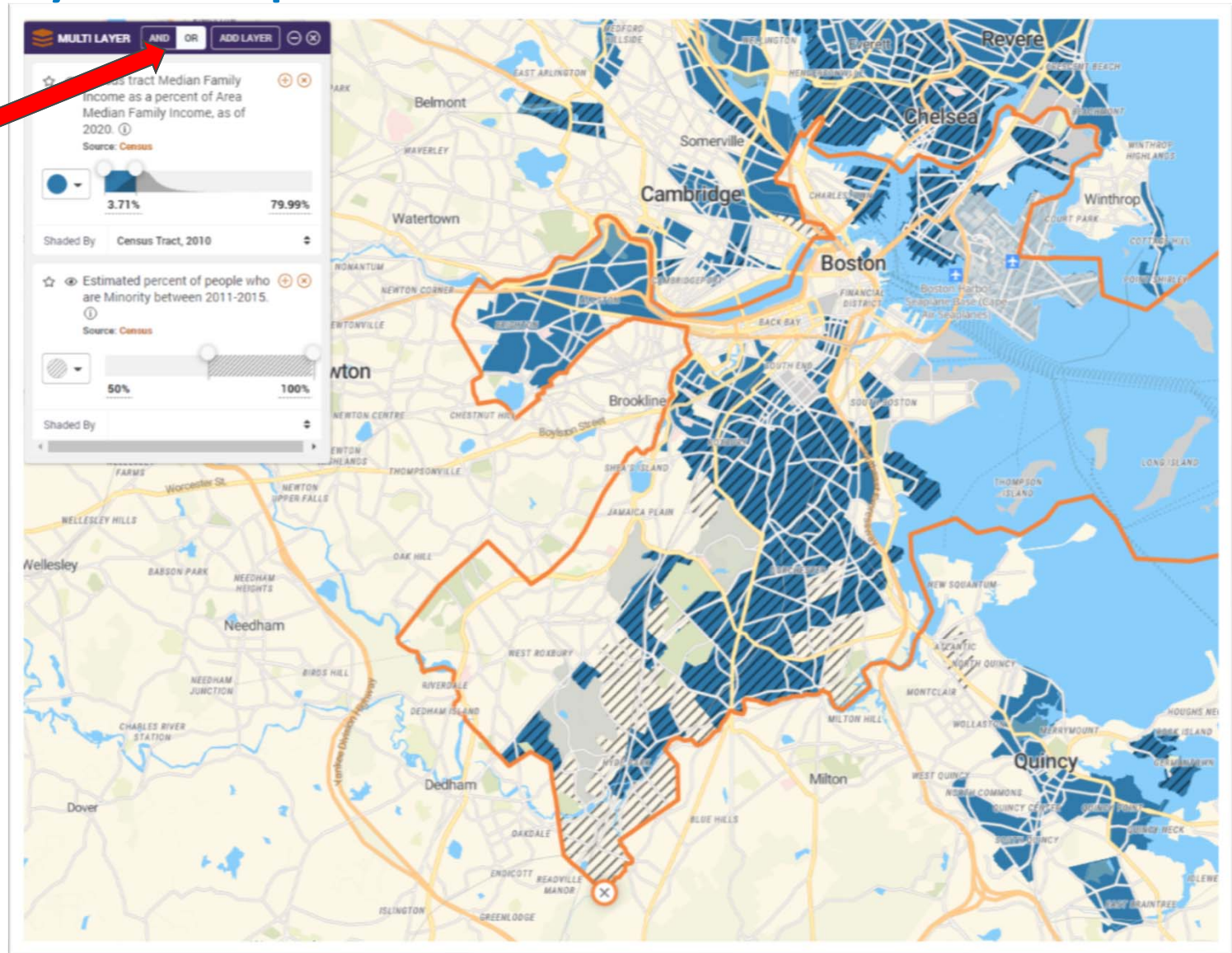
Multi-Layer Maps: OR

2 Demographics

- Low- & Moderate-Income Census Tracts

OR

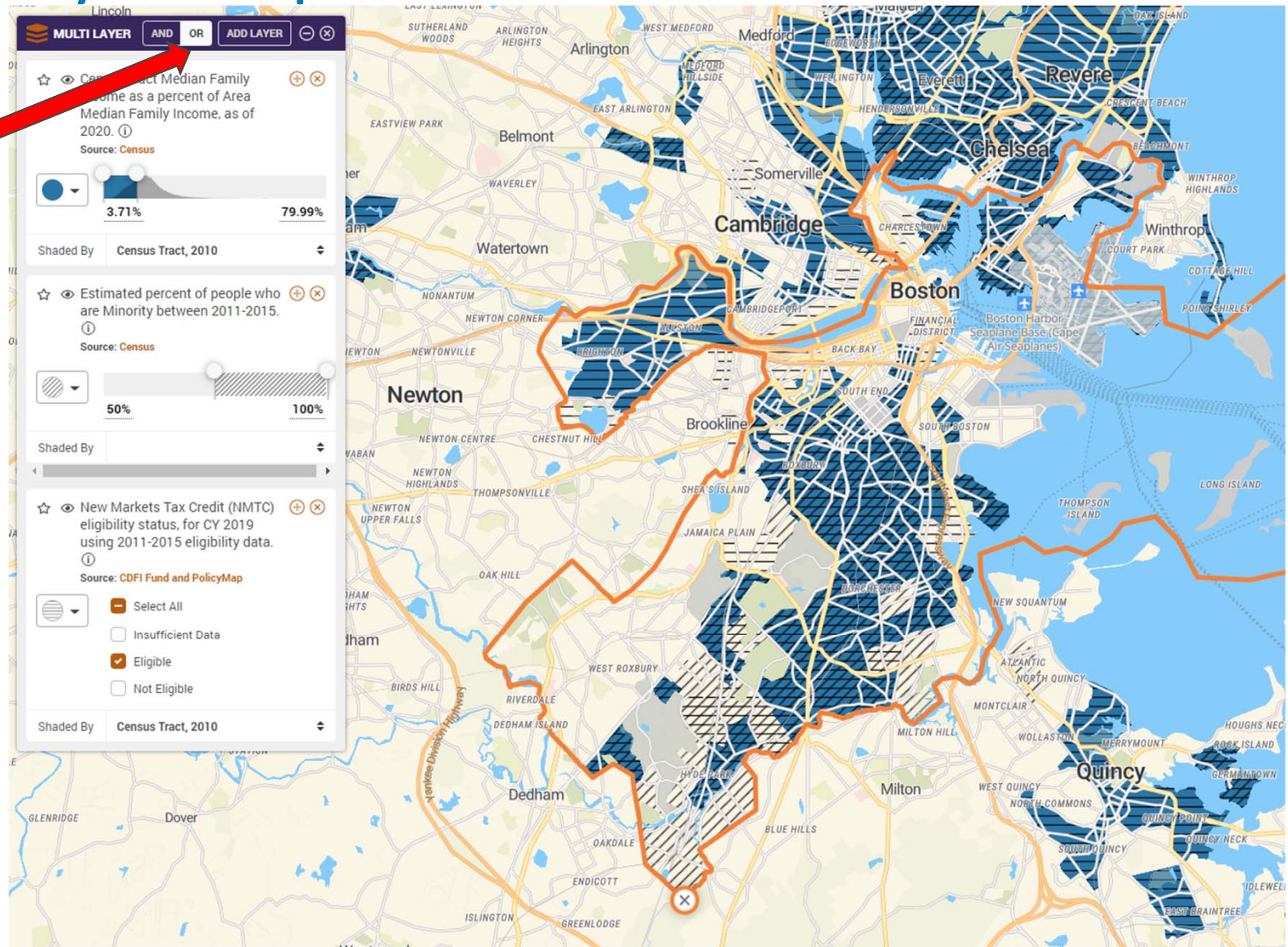
- Majority Minority Census Tracts



Multi-Layer Maps: OR

3 Demographics

- Low- & Moderate-Income Census Tracts
- OR
- Majority Minority Census Tracts
- OR
- New Market Tax Credit eligible census tracts



2020 *Wiz* Specific Enhancements



Wolters Kluwer

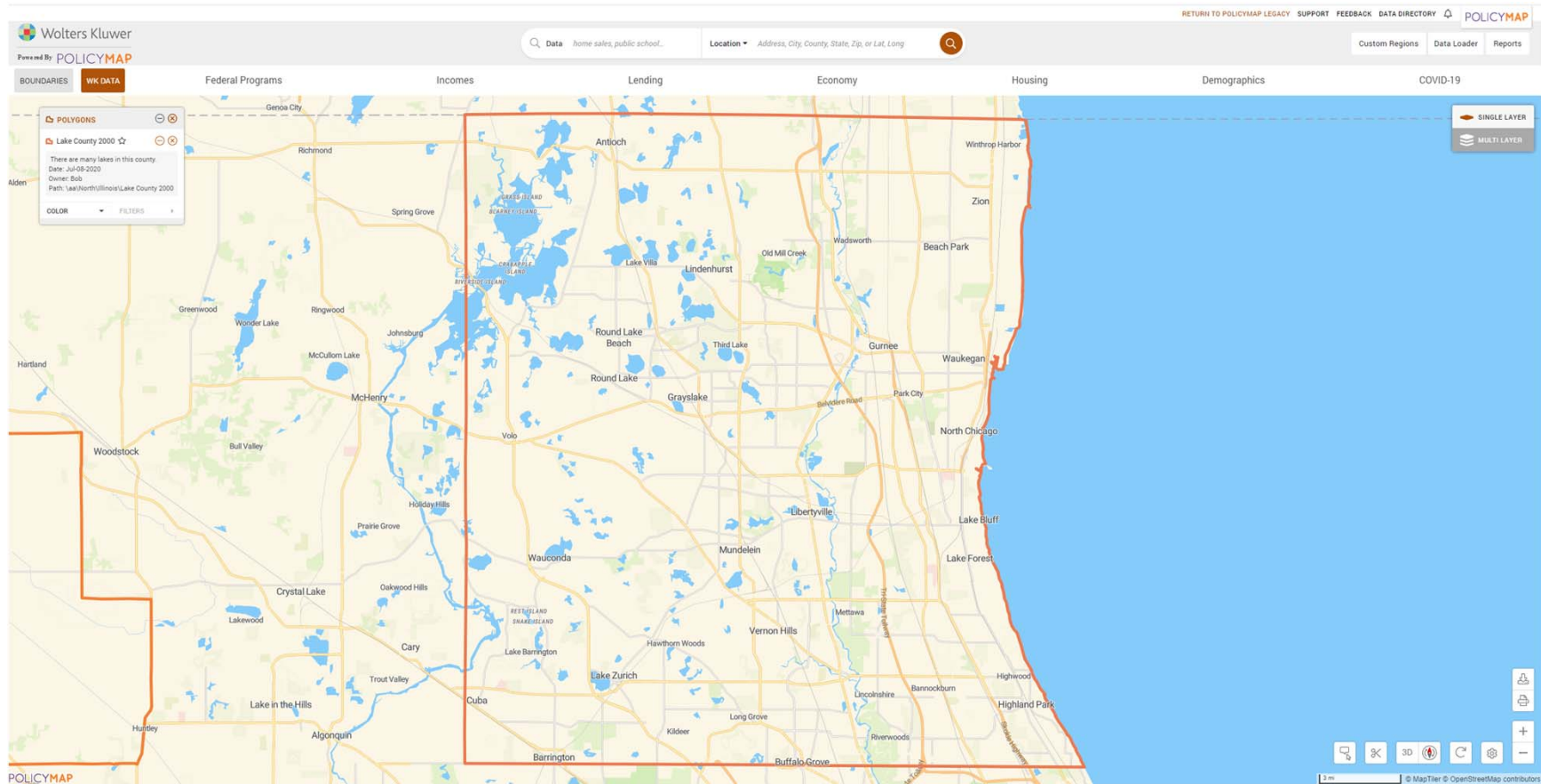
2020 *Wiz* Specific Enhancements



You asked, we listened!

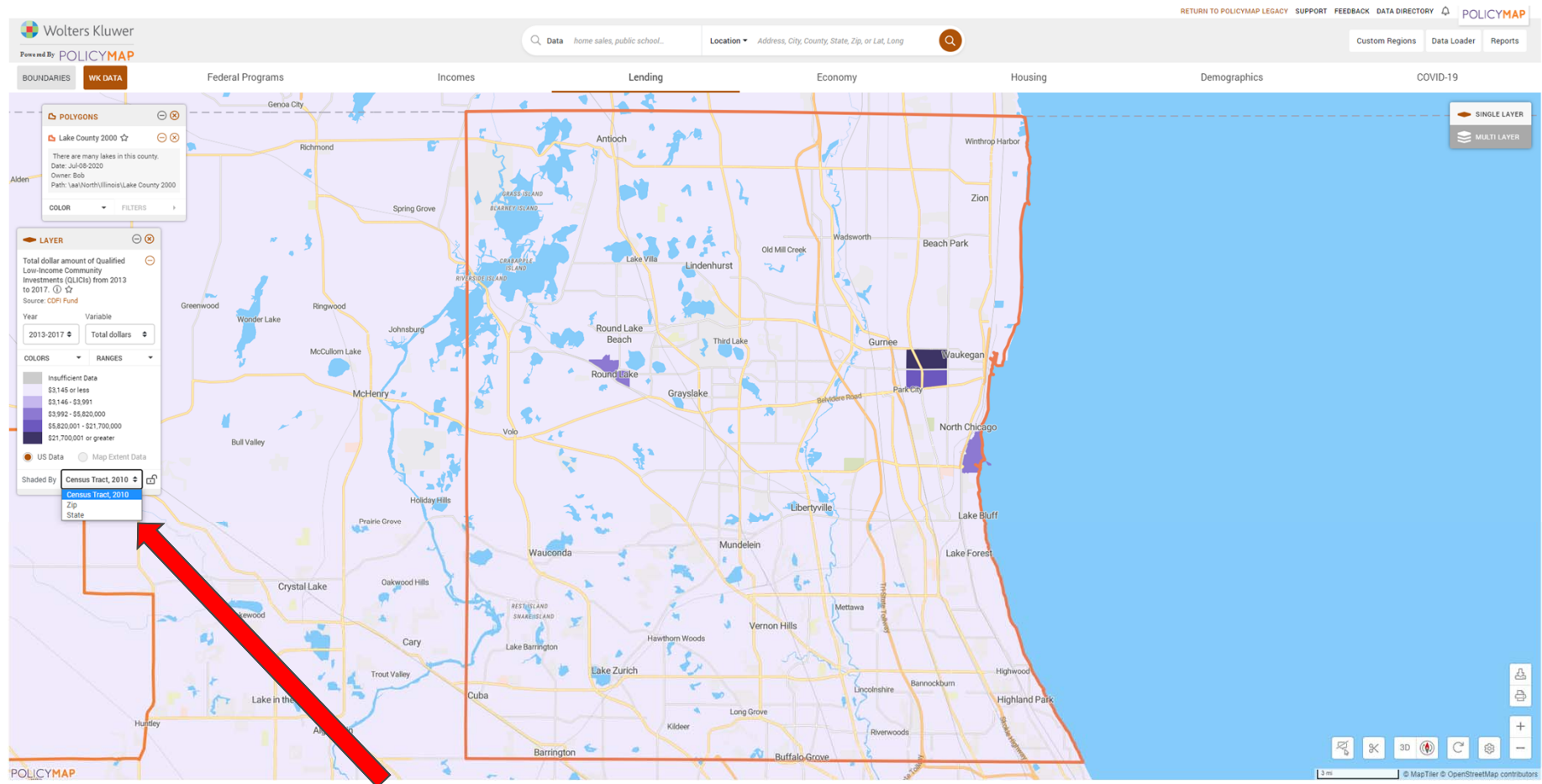
1. *Wiz* Assessment Area Zoom
2. Display Demographic Data within Assessment Area Boundaries Only
3. Download Points inside your Assessment Areas

Zoom to *Wiz* Assessment Areas



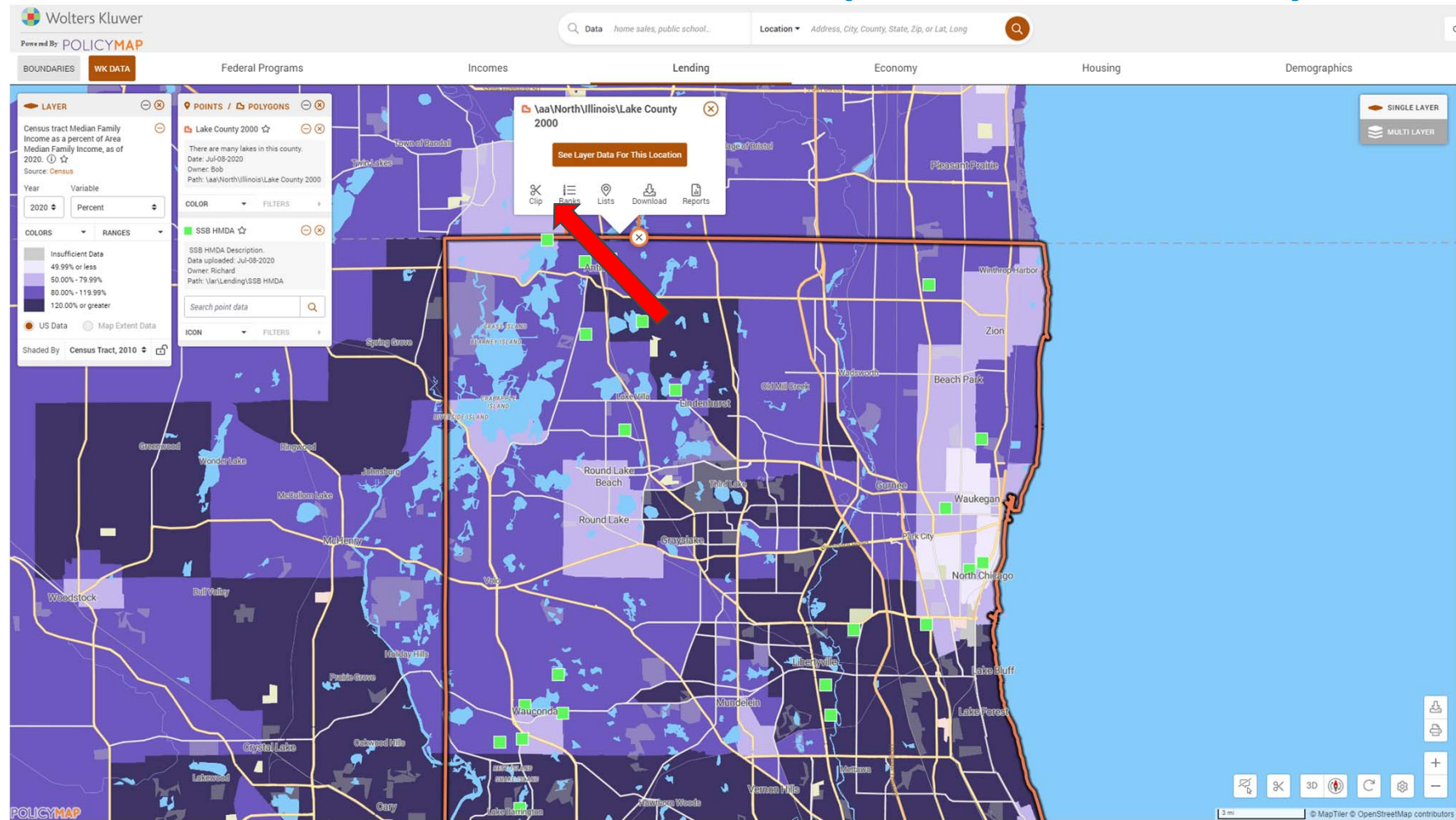
- Select a *Wiz* assessment area and the map will automatically zoom to that area to make your area the center point of the map.

Zoom to *Wiz* Assessment Areas



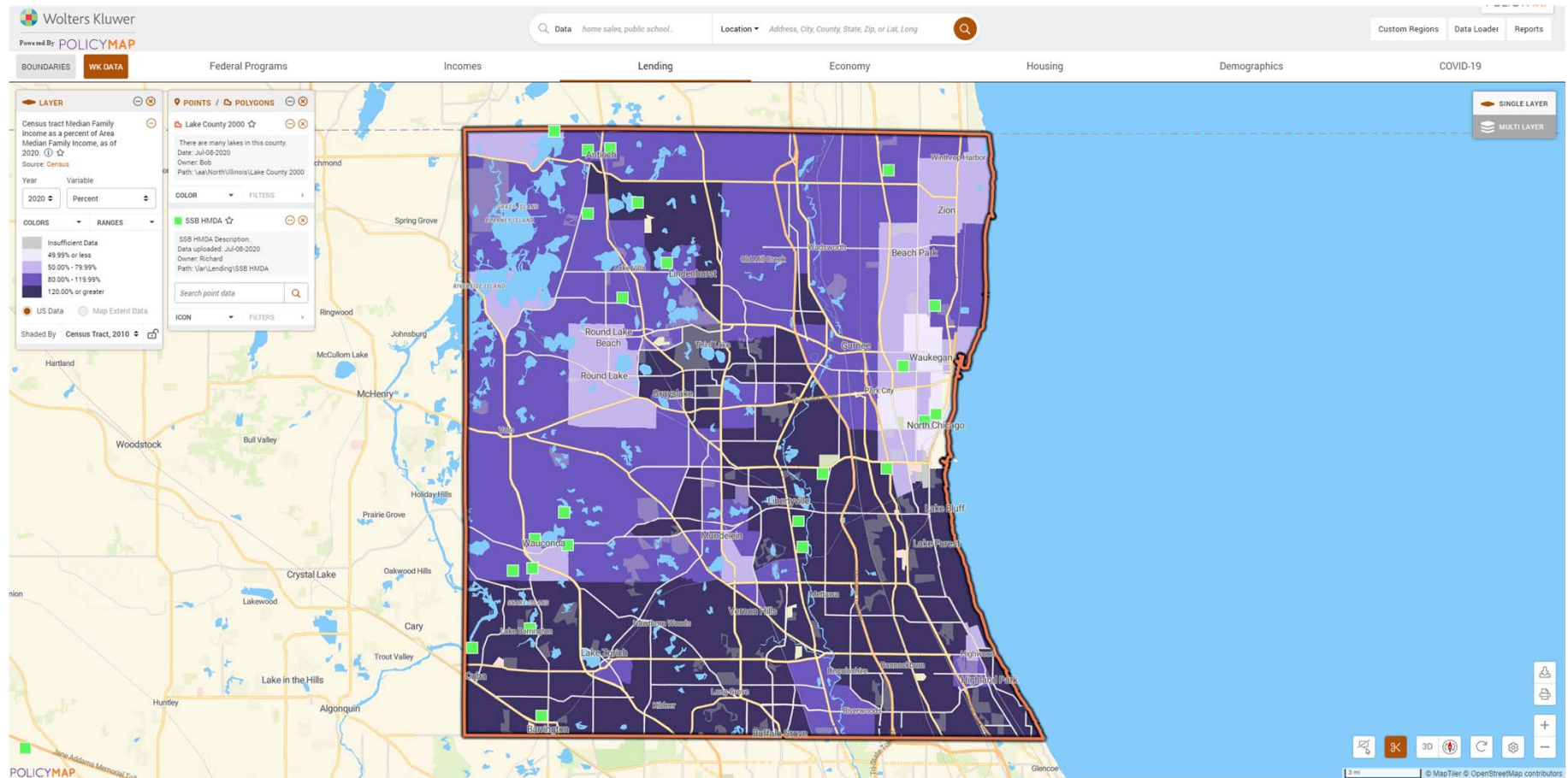
- This view is maintained while plotting your data files and selecting geographic breakdowns (by census tracts, ZIP, state, etc.) for demographics.

Wiz Assessment Areas: Clip Functionality



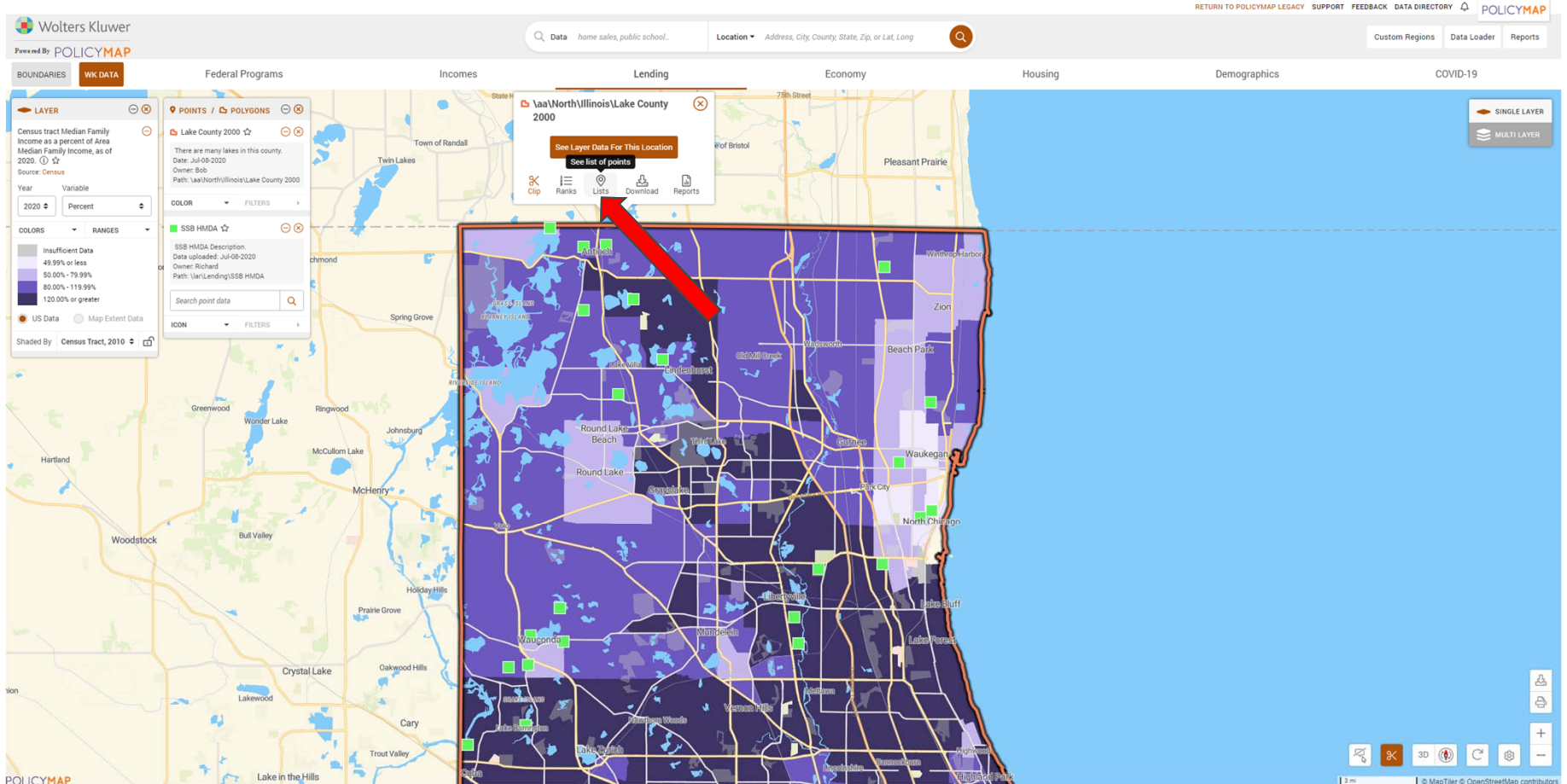
- Display shading within the boundaries of your assessment area only by clicking on your assessment area boundary and selecting the **Clip** icon.

Wiz Assessment Areas: Clip Functionality



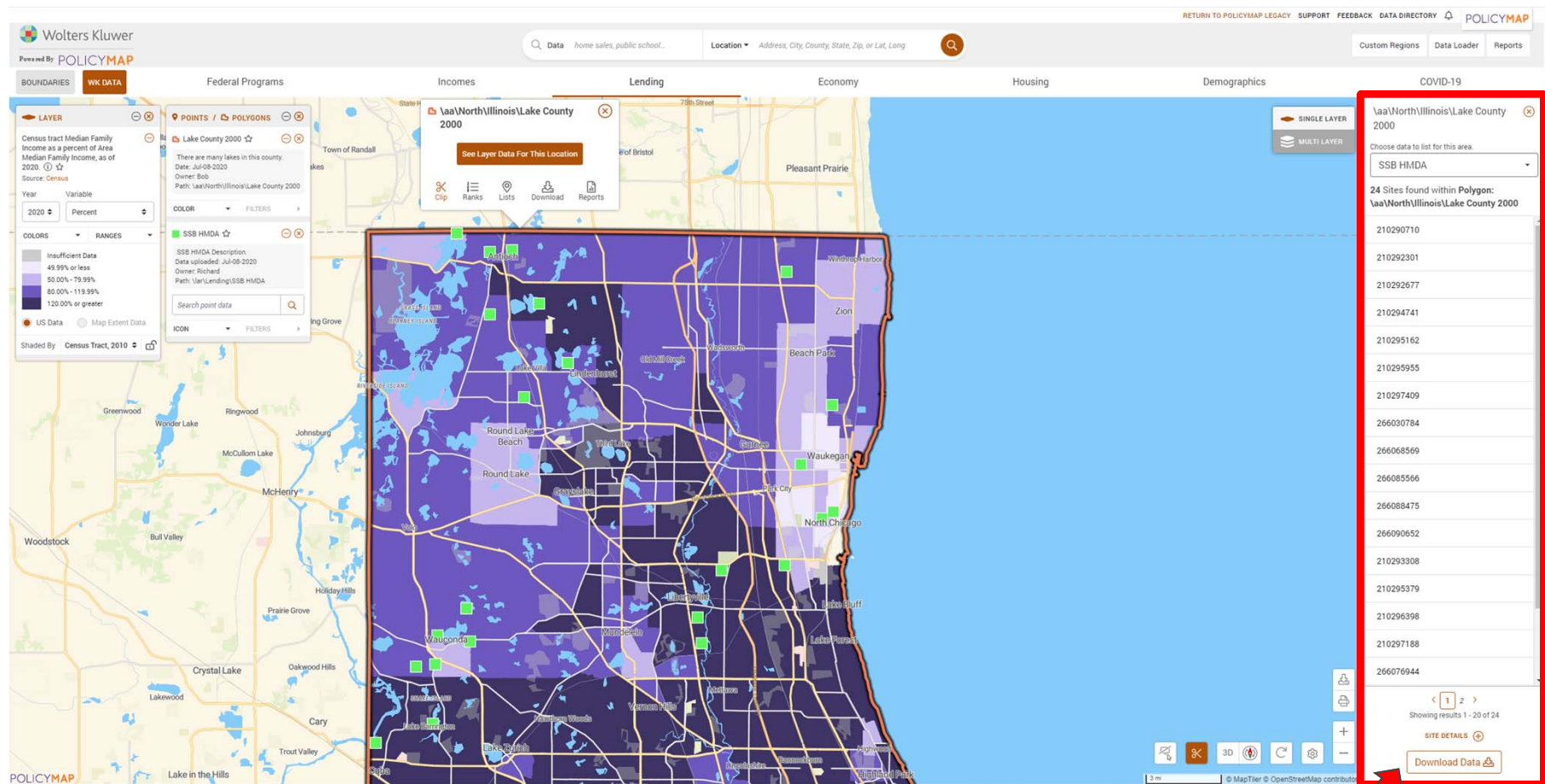
- Want to show demographics outside of your assessment area? Follow same procedures to 'Unclip'

Wiz Assessment Areas: Download Points



- Need a list of points inside your AA boundary? Click on the AA boundary, select the **Lists** button, and choose the file you would like to see a list from the dropdown provided.

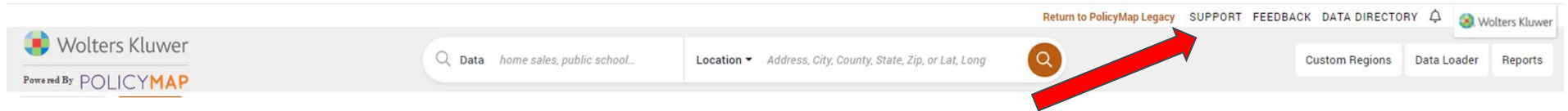
Wiz Assessment Areas: Download Points



- View the list of records within your AA in the right margin.
- Select the 'Download Data' button to export a list

Additional Resources

Additional Resources



- Resources Available in Web Map
 - Support: Policy Map help topics
 - Data Dictionary
- CRA *Wiz* SaaS / HMDA *Wiz* Help