



Consumer Compliance Solutions

# CRA *Wiz* and Fair Lending *Wiz*

*Installation Instructions - UPDATE Installation*

Last Updated November 8, 2019

## Table of Contents

Overview .....	3
Who Should Install .....	3
Where to Install.....	3
Prerequisites .....	3
Required Permissions.....	3
Required Free Disk Space.....	3
Approximate Install Time .....	3
Confirming Installation.....	4
Installation .....	5
Appendix A: Technical Reference .....	13

## Overview

This update to CRA *Wiz* and Fair Lending *Wiz* is this year's Submission update and is required for the submission of HMDA and CRA data. This document provides detailed information for **upgrading** your environment to the latest version of CRA *Wiz* and Fair Lending *Wiz*.

## Who Should Install

All clients using CRA *Wiz* and Fair Lending *Wiz* for HMDA or CRA data submission are required to complete this update prior to submission.

## Where to Install

This update should be applied to both the application and the SQL server. In a typical networked environment, the installation should be run on both a client machine and a server.

## Prerequisites

To apply an update to CRA *Wiz* and Fair Lending *Wiz*, you must have at least the latest major service pack(s) already installed. For example, to upgrade to Version 7.4, you must already have Version 7.3 Service Pack 2 (Build 73.20.30) (or later) installed.

## Required Permissions

This installation requires writing and modification, SQL server access, and registry modifications. Wolters Kluwer recommends that the user running the install have both Windows admin and SQL Server admin login credentials.

## Required Free Disk Space

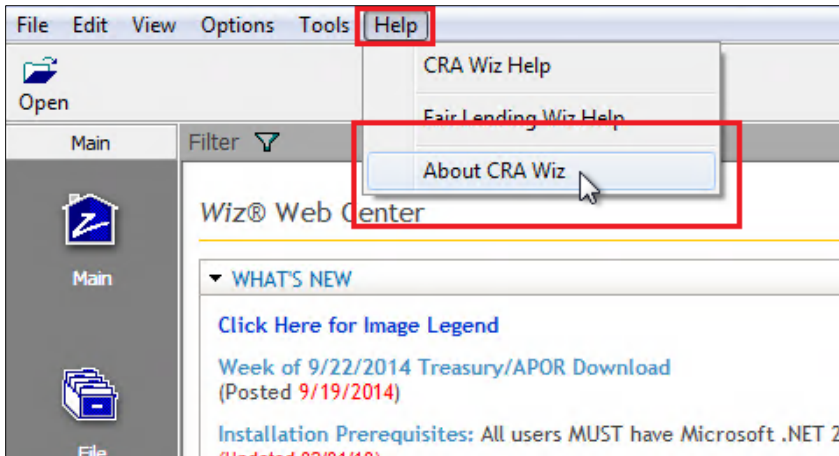
Client side - 3 gigabytes (GB)  
Server side - 20 gigabytes (GB)

## Approximate Install Time

Client side - 10 minutes  
Server side - 1 hour

## Confirming Installation

Open the CRA *Wiz* and Fair Lending *Wiz* application and select **Help > About CRA *Wiz***:



When the upgrade has been completed, both the front and the back-end builds should match the build number included in the Release Notes:

Serial No: 19154-715092-0204244619771  
License Expiration Date: 31 August, 2022  
Front-End Build: 74.0.28  
Back-End Build: 74.0.28  
Temporary Folder:  
C:\Users\ANDREW~1.SHE\AppData\Local\Temp\

**CRA *Wiz*® &  
Fair Lending *Wiz*®**

**Version 7.4**



Copyright © 2019 Wolters Kluwer Financial Services, Inc. All Rights Reserved

### Important!

Please read the included **Release Notes** before installing this update. The notes contain important information about the enhancements included in this update

### **Important!**

If you are running CRA *Wiz* and Fair Lending *Wiz* in a networked environment (computers with *Wiz* Client connected to a computer with *Wiz* Server), you must install the update on both your *Wiz* Client and *Wiz* Server computers.

## **Installation**

To install the CRA *Wiz* and Fair Lending *Wiz* update, follow these steps:

1. Back up your SQL databases.

Wolters Kluwer recommends that institutions back up their SQL databases prior to installing a CRA *Wiz* & Fair Lending *Wiz* program update. Databases that should be backed up include:

- ObjectStore
- General
- USCensus
- CRB
- Procedure
- All *Wiz\_#* databases

For detailed instructions how to back up a database refer to **Procedures for Backing Up CRA *Wiz* & Fair Lending *Wiz* Databases**, available on the CRA *Wiz* and Fair Lending *Wiz* Web Center via the following link:

[DATABASE BACK UP PROCEDURES](#)

Or consult your Database Administrator.

### **Important!**

It is strongly recommended that you exit all Windows™ programs before running this installation. This installation updates selected program files but does not overwrite any user imported files or custom settings created in prior versions.

2. Download the update locally where CRA *Wiz* and Fair Lending *Wiz* is installed.
3. Right-click the **setup.exe** file.

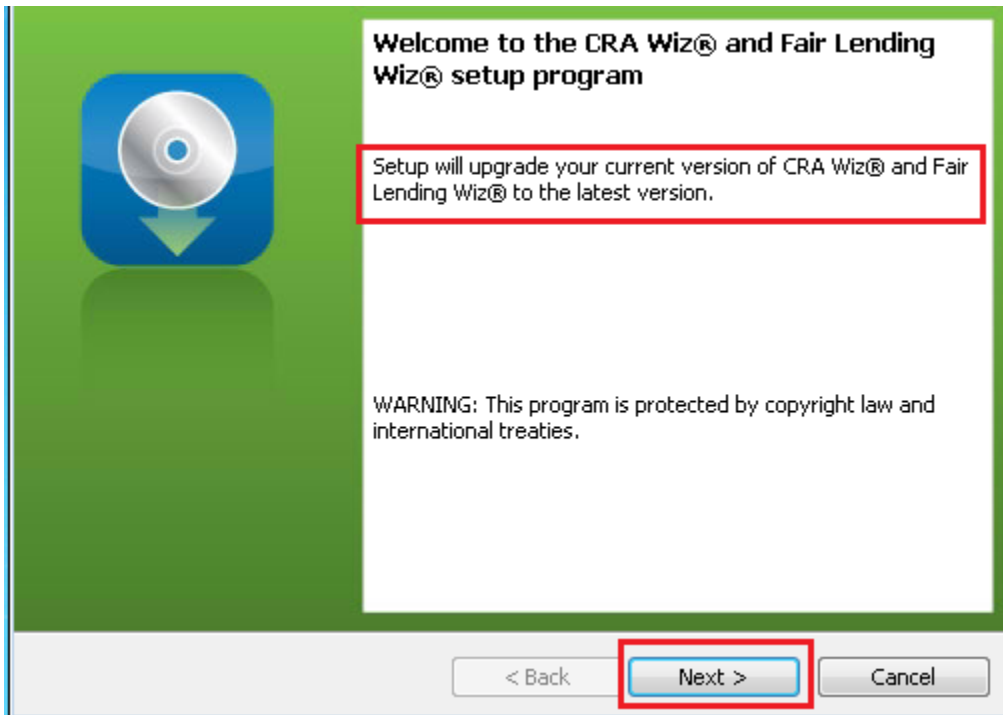
The software displays a contextual menu.

4. Select **Run as Administrator**.

The installer displays the **Welcome** screen.

5. Follow the directions for each of the following screens.
6. Click the **OK** button.

The software displays the **Welcome** screen:

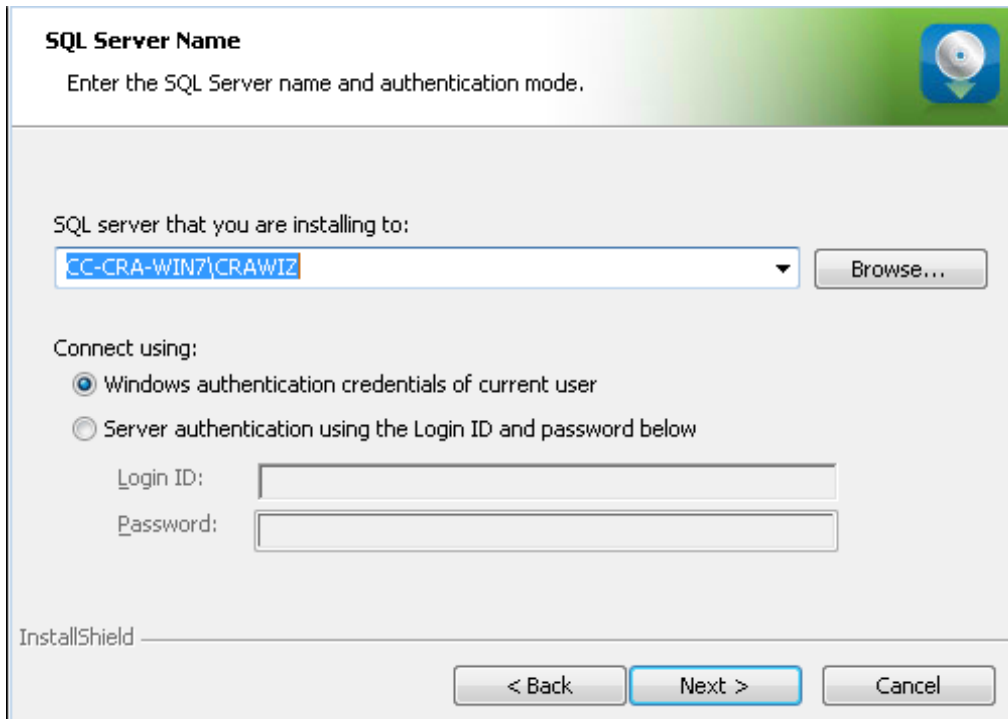


**Note:**

The Welcome screen text indicates that you are about to update the current version of CRA *Wiz* and Fair Lending *Wiz*. If the installer does not detect your current installation of CRA *Wiz* and Fair Lending *Wiz*, please contact **Wolters Kluwer Technical Support** at 1-800-261-3111. When prompted, select **option 1**.

7. Click the **Next** button.

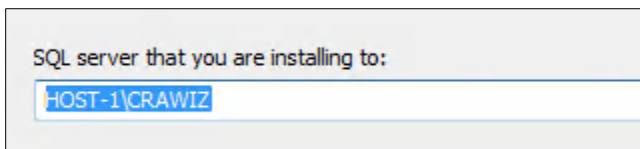
The software displays the SQL Server Name screen:



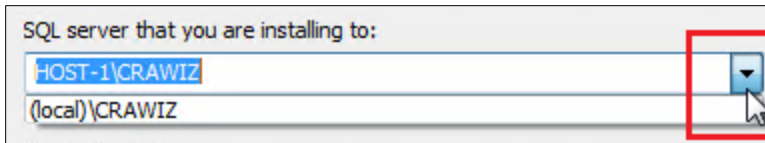
**Note:**

The software displays the SQL Server Login screen only if the computer on which you are installing the update is running SQL Server. If the installer does not detect SQL Server on your computer, the installer displays the **Ready to Install the Program** screen. **Skip to Step 12.**

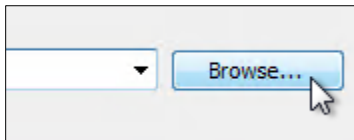
8. In the **SQL server that you are installing to:** field, do one of the following:
  - Enter the name of the SQL Server to which you are installing the data:



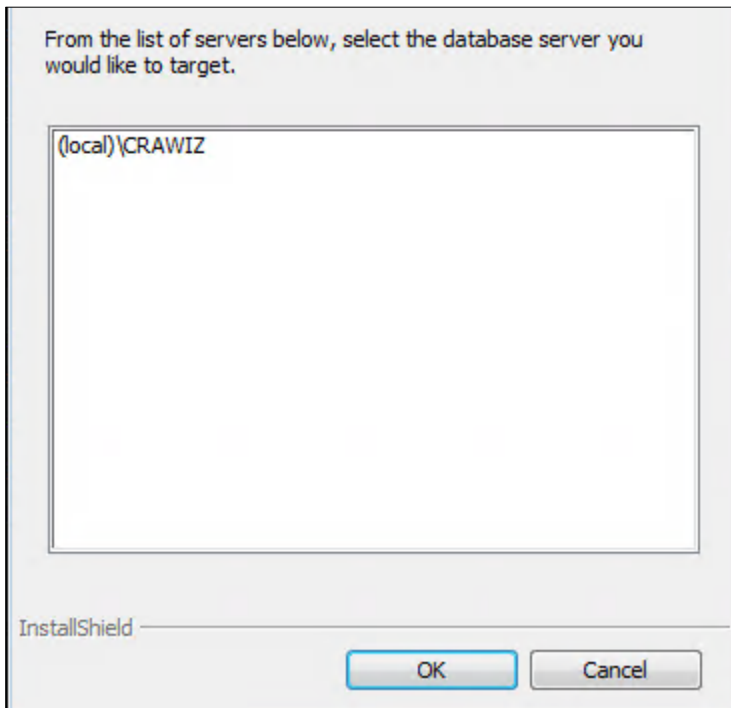
- Click the drop-down arrow located at the end of the field to select the Database server from a menu list:



- Click the **Browse** button:



Then select the database server from the resultant dialog box:



9. Choose one of the following authentication options:

- **Use Windows Authentication**
- **Use SQL Server Authentication** - If you select this option, you must also enter your SQL Server account User Name and Password in the **User Name** and **Password** fields.



10. Click the **Next** button.

**Important:**

If your SQL Server installation does not meet requirements for installing CRA *Wiz* and Fair Lending *Wiz*, the software displays the following message:

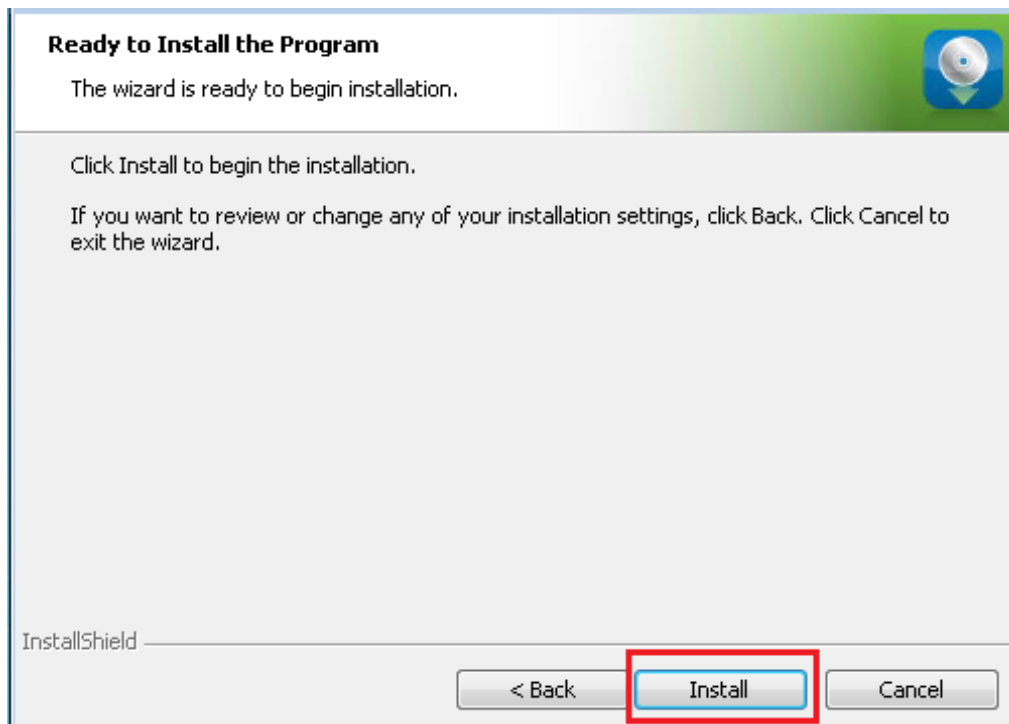


If the software displays this message, contact **Wolters Kluwer Technical Support** at 1-800-261-3111 for assistance.

Do one of the following:

- Click the **Yes** button to proceed with installation.
- Click the **No** button to cancel the installation.

The software displays the **Ready to Install the Program** screen:



11. Click the **Install** button.

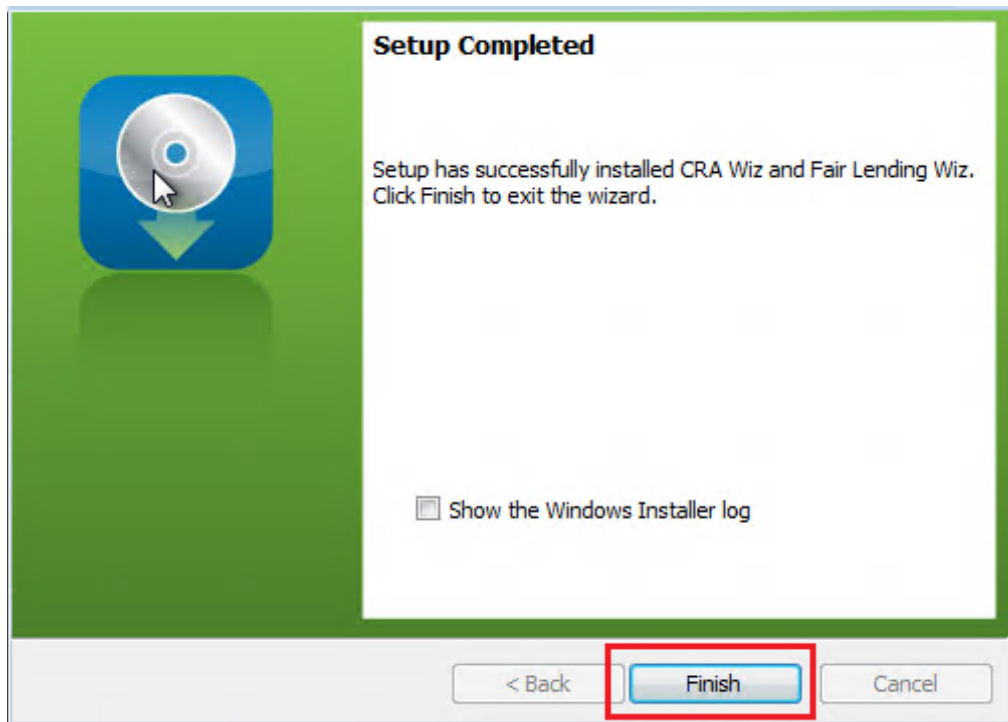
The installer runs the update:



**Note:**

During installation the software displays a progress bar at the bottom of the installer window.

When installation is complete, the installer displays the **Update Complete** screen:



12. To exit the installation, click the **Finish** button.

Installation is complete.

**Important!**

Wolters Kluwer recommends restarting your computer after installation is complete.

## Appendix A: Technical Reference

- ✓ Wolters Kluwer currently supports your CRA *Wiz* and Fair Lending *Wiz* software using MS SQL Server 2012, 2014, and 2016 (Standard, Enterprise, and Express editions), with the SQL Server upgrade patches supported by Microsoft.
- ✓ CRA *Wiz* and Fair Lending *Wiz* 7.4 update requires CRA *Wiz* and Fair Lending *Wiz* 7.3 Service Pack 2 (Build 73.20.30) or later; Microsoft Windows Server 2012™, Microsoft Windows 7™, Microsoft Windows 8™, Microsoft Windows 8.1™, or Microsoft Windows 10.



**About Wolters Kluwer** - Wolters Kluwer provides audit, risk and compliance solutions that help financial organizations improve efficiency and effectiveness across their enterprise. Whether complying with regulatory requirements, addressing a single key risk, or working toward a holistic risk management strategy, more than 15,000 customers worldwide count on Wolters Kluwer for a comprehensive and dynamic view of risk management and compliance. With more than 30 offices in over 20 countries, the company's prominent brands include: FRSGlobal, ARC Logics for Financial Services, PCI, Bankers Systems, VMP® Mortgage Solutions, AppOne®, GainsKeeper®, Capital Changes, NILS, AuthenticWeb™ and Uniform Forms™. of Wolters Kluwer is a leading global information services and publishing company with annual revenues of (2011) €3.4 billion (\$4.7 billion) and approximately 19,000 employees worldwide. Please visit our website for more information.

**Wolters Kluwer**  
130 Turner Street  
Building 3, 4th Floor  
Waltham, MA 02453

800.261.3111