



Consumer Compliance Solutions

# CRA *Wiz* and Fair Lending *Wiz* 7.1

*Installation Instructions - UPDATE Installation*

Last Updated November 16, 2015

## Table of Contents

Table of Contents .....	2
Overview .....	3
Who Should Install .....	3
Where to Install.....	3
Prerequisites .....	3
Required Permissions.....	3
Required Free Disk Space.....	3
Approximate Install Time .....	3
Confirming Installation.....	4
Installation .....	5
Appendix A: Technical Reference .....	14
Appendix B: List of Modified Files.....	15

## Overview

CRA *Wiz* and Fair Lending *Wiz* 7.1 is this year's Submission update and is required for the submission of 2015 HMDA and CRA data. This document provides detailed information for **upgrading** your environment from Version 7.0 to 7.1.

## Who Should Install

All clients using CRA *Wiz* for HMDA or CRA data submission are required to complete this update prior to submission.

## Where to Install

This update should be applied to both the application and the SQL server. In a typical networked environment, the installation should be run on both a client machine and a server.

## Prerequisites

CRA *Wiz* and Fair Lending *Wiz* Version 7.0 is required to install Version 7.1 as an upgrade. In CRA *Wiz* and Fair Lending *Wiz*, go to **Help > About CRA *Wiz*** and view the build number. Builds beginning with "70." are acceptable.

## Required Permissions

This installation requires writing and modification, SQL server access, and registry modifications. Wolters Kluwer Financial Services recommends that the user running the install have both Windows admin and SQL Server admin login credentials.

## Required Free Disk Space

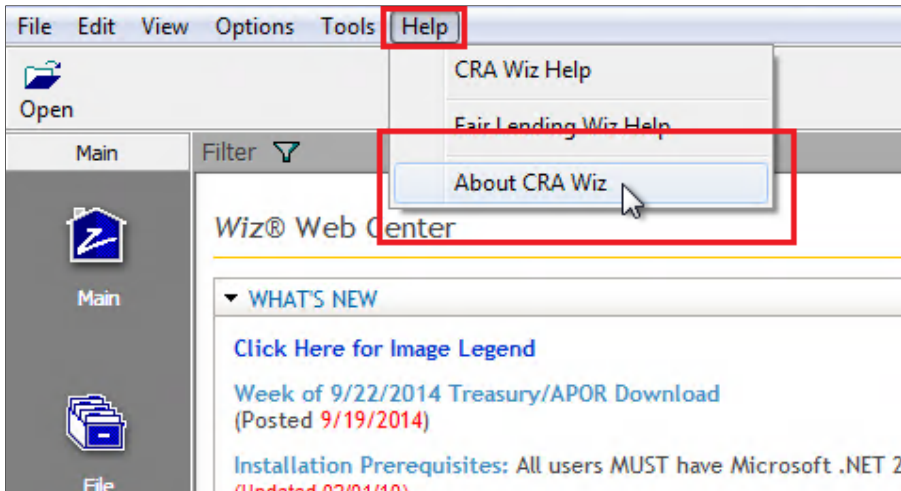
Client side - 2.5 gigabytes (GB)  
Server side - 18 gigabytes (GB)

## Approximate Install Time

Client side - 20 minutes  
Server side - 1 hour

## Confirming Installation

Open the CRA *Wiz* and Fair Lending *Wiz* application and select **Help > About CRA *Wiz***:



When the upgrade has been completed, both the front and the back end builds should be 71.X.XX:



### Important!

Please read the included **Release Notes** before installing this update. The notes contain important information about the enhancements included in this update

## Important!

If you are running CRA *Wiz* and Fair Lending *Wiz* in a networked environment (computers with *Wiz* Client connected to a computer with *Wiz* Server), you must install the 7.1 update on both your *Wiz* Client and *Wiz* Server computers.

## Installation

To install CRA *Wiz* and Fair Lending *Wiz* 7.1, follow these steps:

1. Back up your SQL databases.

Wolters Kluwer Financial Services recommends that institutions back up their SQL databases prior to installing a CRA *Wiz* & Fair Lending *Wiz* program update. Databases that should be backed up include:

- ObjectStore
- General
- USCensus
- CRB
- Procedure
- All *Wiz\_#* databases

For detailed instructions how to back up a database refer to **Procedures for Backing Up CRA *Wiz* & Fair Lending *Wiz* Databases**, available on the CRA *Wiz* and Fair Lending *Wiz* Web Center at:

[www.pcidownloads.com/CRAWiz/Documents/DatabaseBackupProcedures.pdf](http://www.pcidownloads.com/CRAWiz/Documents/DatabaseBackupProcedures.pdf)

Or consult your Database Administrator.

## Important!

It is strongly recommended that you exit all Windows™ programs before running this installation. This installation updates selected program files, but does not overwrite any user imported files or custom settings created in prior versions.

2. Download the update.
3. Right-click the **setup.exe** file.

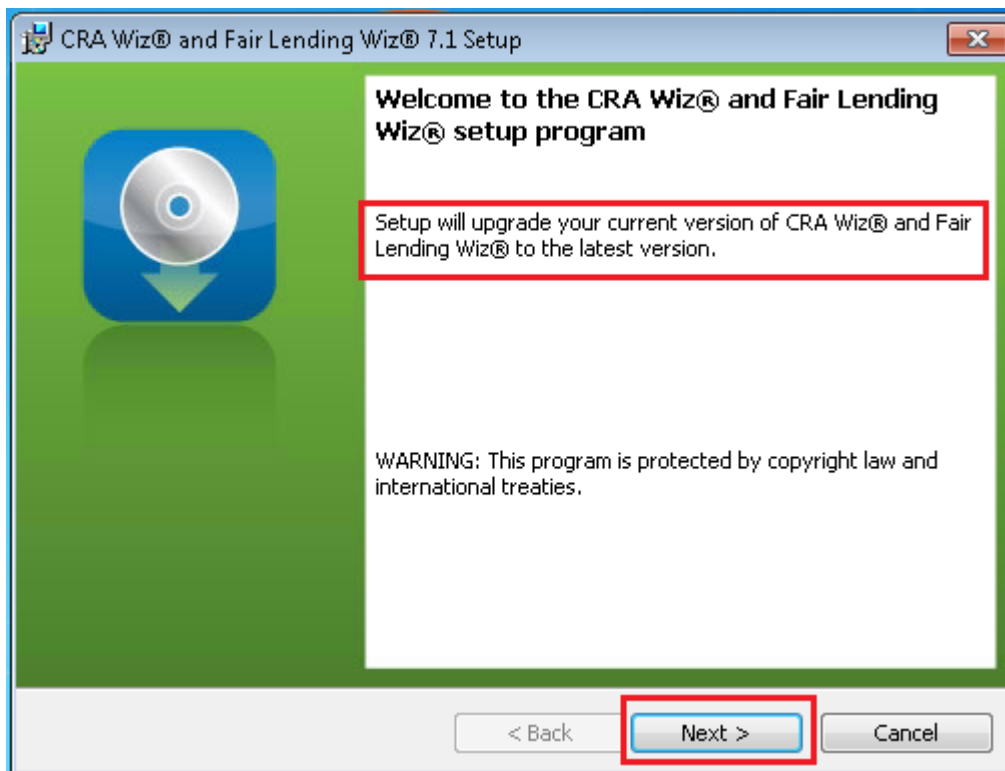
The software displays a contextual menu.

4. Select **Run as Administrator**.

The installer displays the **Welcome** screen.

5. Follow the directions for each of the following screens.
6. Click the **OK** button.

The software displays the **Welcome** screen:

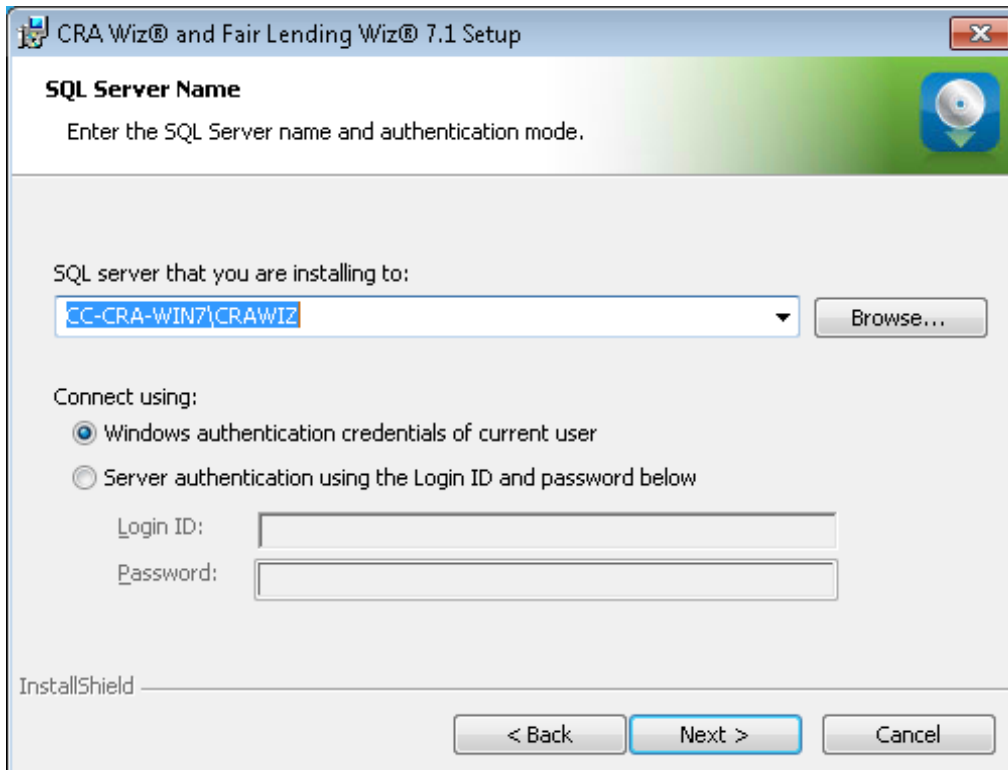


**Note:**

The Welcome screen text indicates that you are about to update the current version of CRA *Wiz* and Fair Lending *Wiz* (7.0) to 7.1. If the installer does not detect your current installation of CRA *Wiz* and Fair Lending *Wiz*, please contact **Wolters Kluwer Financial Services Technical Support** at 1-800-261-3111. When prompted, select **option 1**.

7. Click the **Next** button.

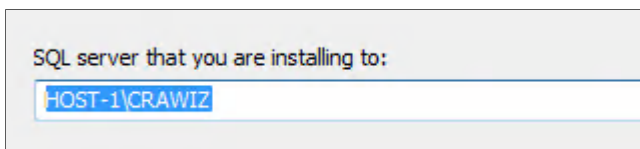
The software displays the SQL Server Name screen:



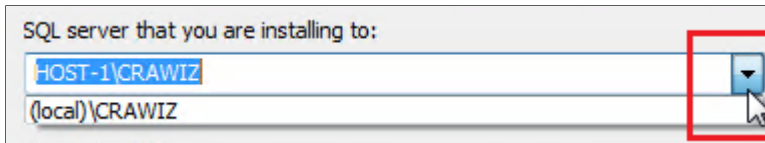
**Note:**

The software displays the SQL Server Login screen only if the computer on which you are installing the 7.1 update is running SQL Server. If the installer does not detect SQL Server on your computer, the installer displays the **Ready to Install the Program** screen. **Skip to Step 12.**

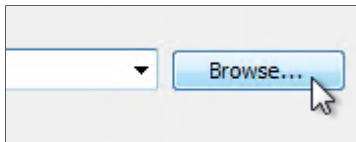
8. In the SQL server that you are installing to: field, do one of the following:
  - Enter the name of the SQL Server to which you are installing the data:



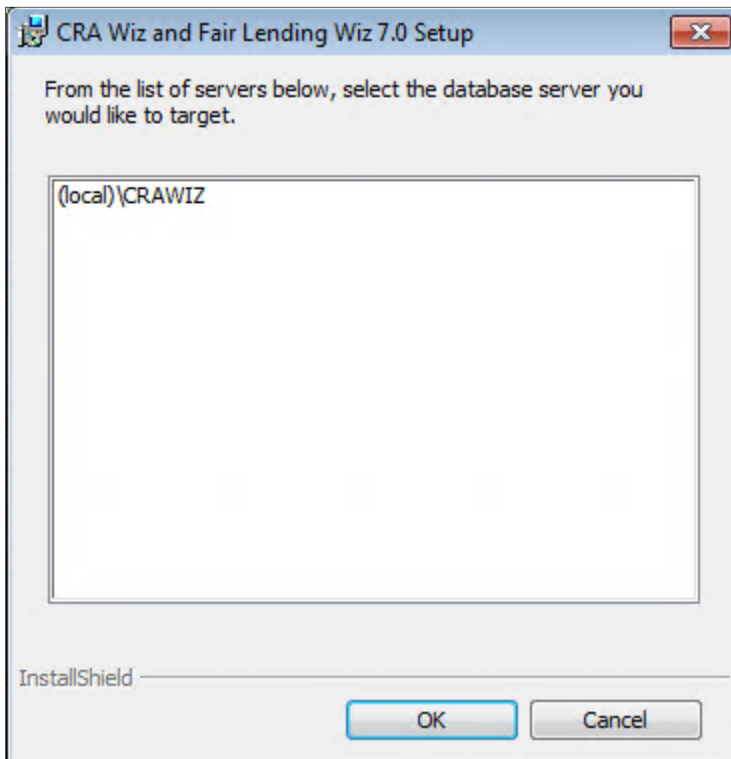
- Click the drop-down arrow located at the end of the field to select the Database server from a menu list:



- Click the **Browse** button:



Then select the database server from the resultant dialog box:



9. Choose one of the following authentication options:

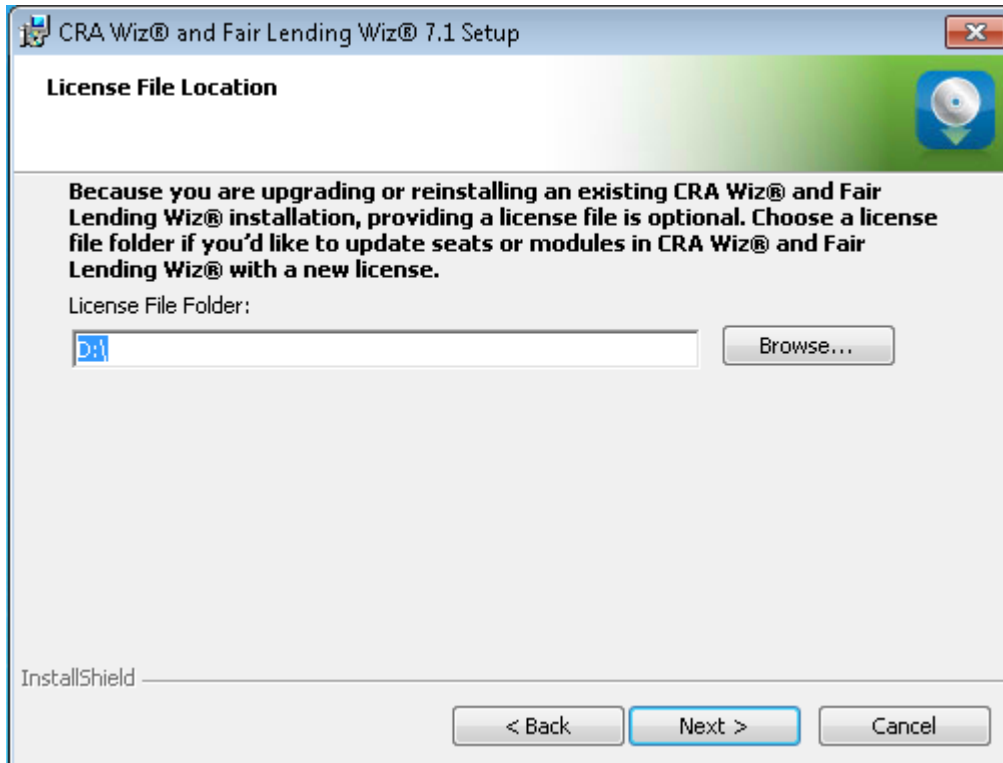
- **Use Windows Authentication**



- **Use SQL Server Authentication** - If you select this option, you must also enter your SQL Server account User Name and Password in the **User Name** and **Password** fields.

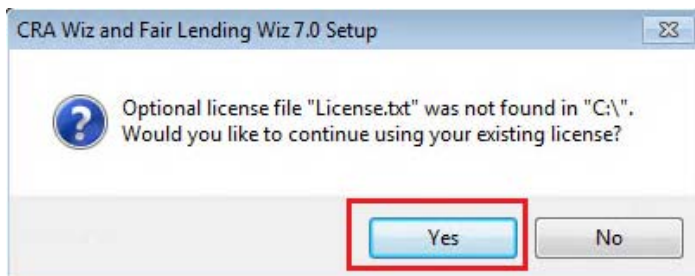
10. Click the **Next** button.

The software displays the **License File Location** screen:



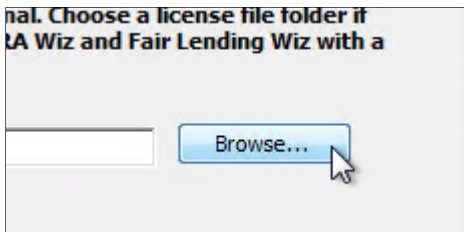
11. Do one of the following:

- If you do not have a new license, click the **Next** button. The software displays a confirmation dialog box:

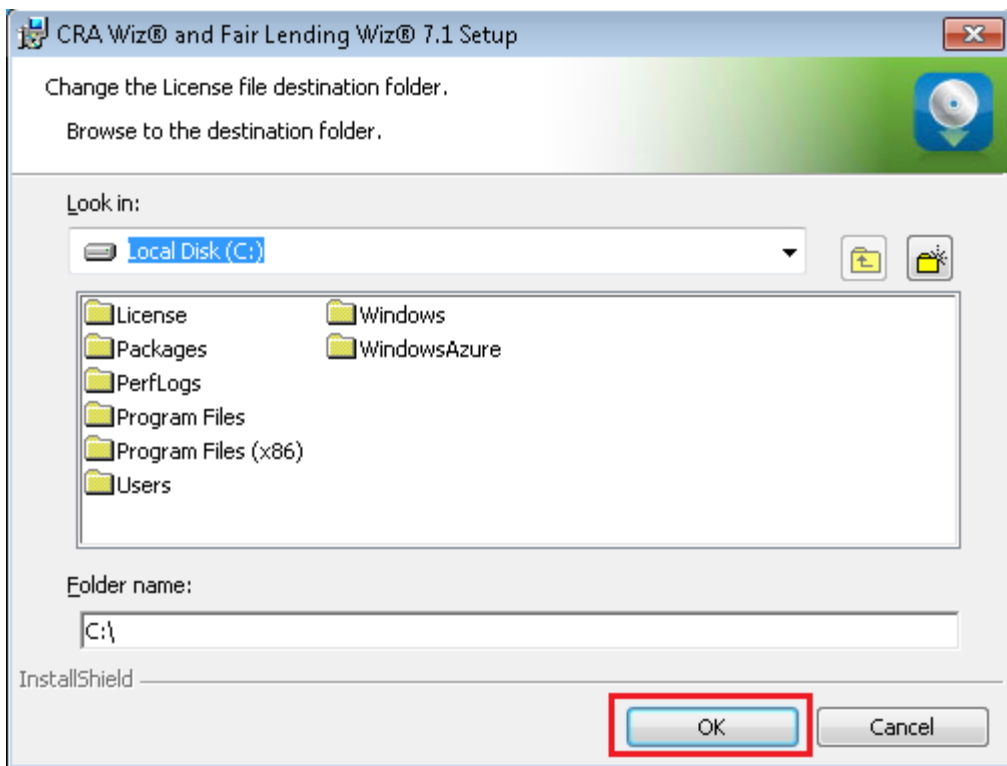


Click the Yes button.

- If you do have a new license, click the **Browse** button:

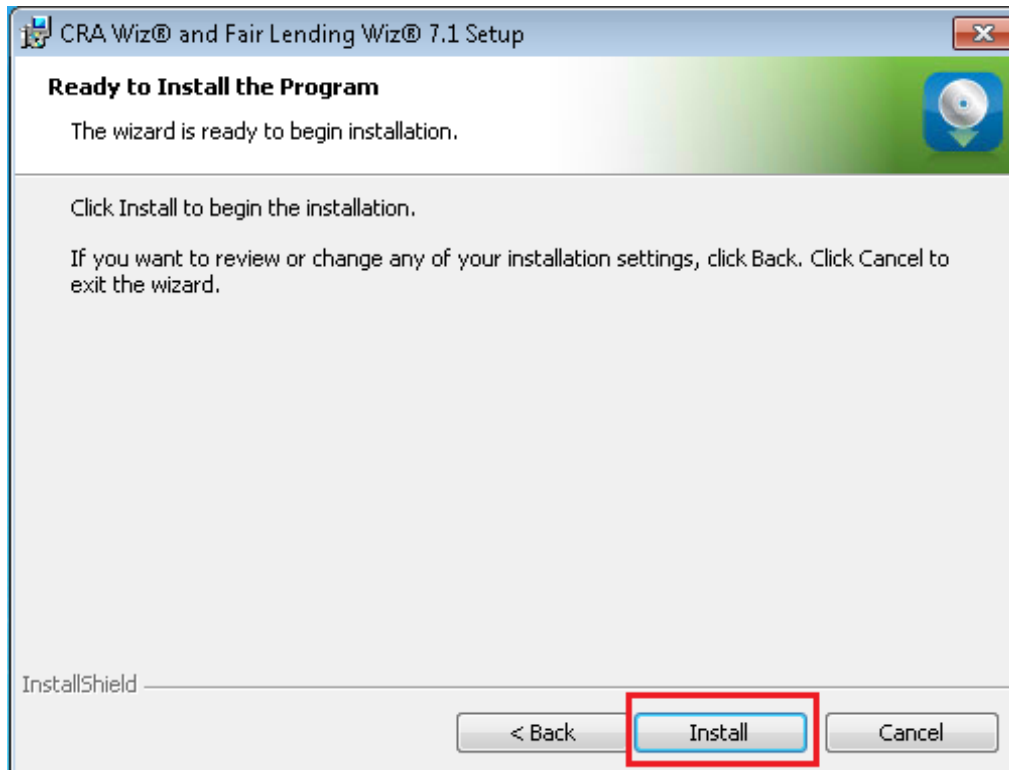


Then use the resultant dialog box to navigate to and select your license file (either a local or network location), then click the **OK** button:



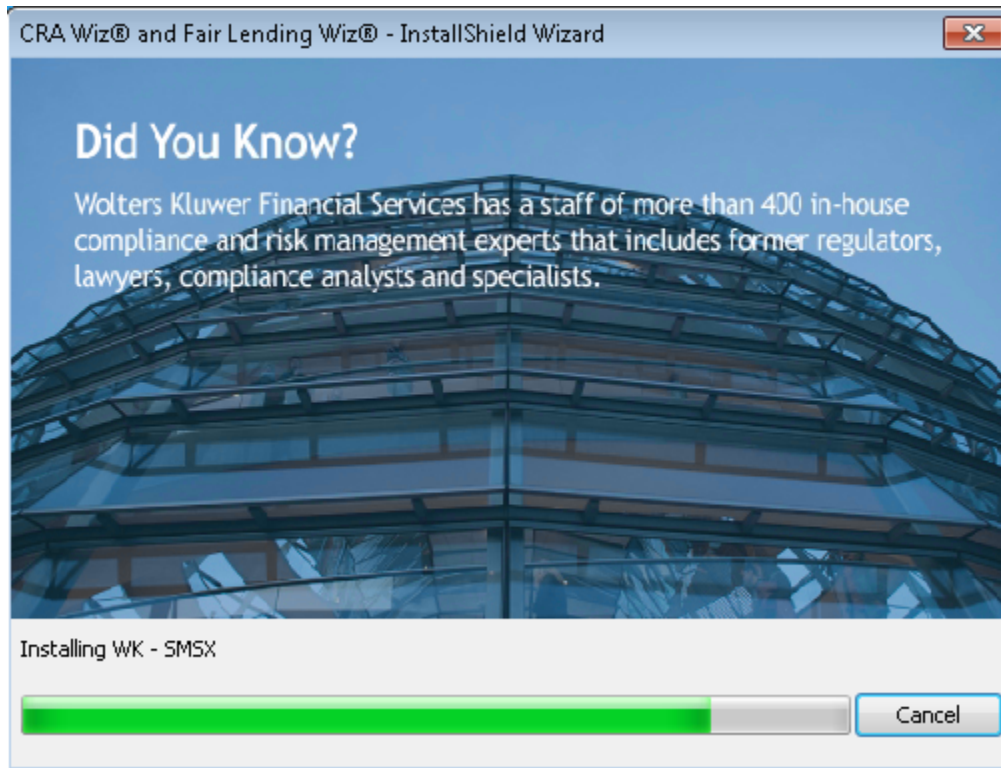
12. In the License File Location screen, click the **Next** button.

The software displays the **Ready to Install the Program** screen:



13. Click the **Install** button.

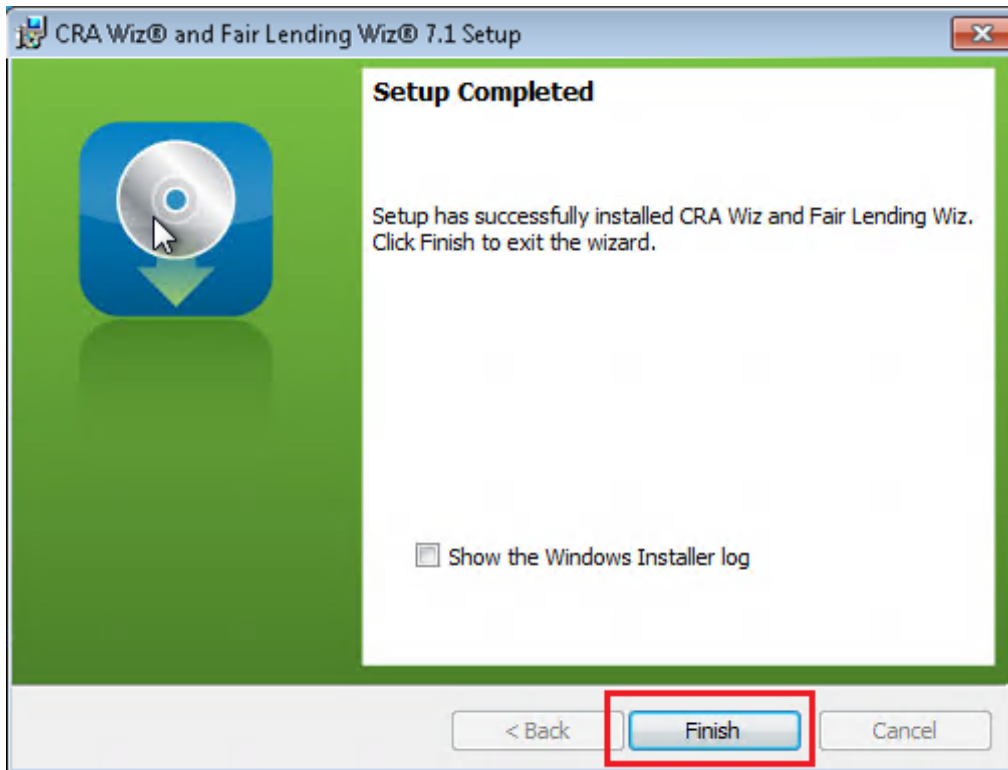
The installer runs the update:



**Note:**

During installation the software displays a progress bar at the bottom of the installer window.

When installation is complete, the installer displays the **Update Complete** screen:



14. To exit the installation, click the **Finish** button.

Installation is complete.

**Important!**

Wolters Kluwer Financial Services recommends restarting your computer after installation is complete.

## Appendix A: Technical Reference

- ✓ Wolters Kluwer Financial Services currently supports your CRA *Wiz* and Fair Lending *Wiz* 7.1 software using MS SQL Server 2005, 2008, and 2012 (Standard, Enterprise, and Express editions), with the SQL Server upgrade patches supported by Microsoft.

CRA *Wiz* and Fair Lending *Wiz* 7.1 update requires CRA *Wiz* and Fair Lending *Wiz* 7.0 or later; Microsoft Windows Server 2003™, Microsoft Windows Server 2008™, Microsoft Windows Server 2012™, Microsoft Windows 7™, Microsoft Windows 8™, or Microsoft Windows 8.1.™

- ✓ If your Client machine has SQL server installed, please provide the name of the local SQL server when the upgrade requests the SQL server name. The installer is requesting this information so that it can test the SQL Server for CRA *Wiz* databases and then upgrade the client or workstation. If the installer finds *Wiz* Databases, the Workstation version will be installed. If the installer does not find *Wiz* Databases it installs the Client upgrade.

## Appendix B: List of Modified Files

The following appendix contains a list of files that are modified by the CRA *Wiz* and Fair Lending *Wiz* 7.1 installation.

File	Size (bytes)
batch.avi	219648
Batchind.exe	1341440
CRAWiz3.RES	1384
CRAWizConnector.dll	20944
ct.ini	62
DPV.dll	108544
errconfig.xml	91
ErrorReport.exe	75816
FileMap.dll	95232
geo.ini	155
Geocoder.exe	175104
geostan.lic	2820
Geostn32.dll	1588736
Geostn32.lib	45790
Geostn32MT.dll	1595344
Geostn32MT.lib	46184
geotest.exe	269824
GeoTract.exe	84008
gsdsplit.ini	3870
gsdspt32.exe	751104
GsNetInterop.dll	139264
Interop.Shell32.dll	53248
lacs.dll	155136
map.ini	75
mapconfig.xml	8310
MapWiz.exe	79824
MapWiz.exe.config	8538
MapXtremeDesktop.lic	128
Microsoft.ApplicationBlocks.Data.dll	40960
Microsoft.Practices.Composite.dll	76800
Microsoft.Practices.Composite.Presentation.dll	62464

Microsoft.Practices.EnterpriseLibrary.Common.dll	334648
Microsoft.Practices.EnterpriseLibrary.Data.dll	166712
Microsoft.Practices.EnterpriseLibrary.ExceptionHandling.dll	146232
Microsoft.Practices.EnterpriseLibrary.ExceptionHandling.Logging.dll	52024
Microsoft.Practices.EnterpriseLibrary.Logging.dll	502584
Microsoft.Practices.ServiceLocation.dll	27448
Microsoft.Practices.Unity.dll	133944
Microsoft.Practices.Unity.Interception.dll	125752
PBBI.MapControl.dll	2023376
PCi.BatchGeocoder.Common.dll	30672
PCi.BatchGeocoder.QueueManager.dll	26576
PCi.BatchGeocoder.QueueProcessor.dll	55248
PCi.BatchGeocoder.Service.exe	30672
PCi.BatchGeocoder.Service.exe.config	523
PCiAMSvr.dll	99280
PCiAMSvr.ini	789
PCiBatchOOP.exe	30760
PCiOutgeoTool.exe	120872
PropMetaData.xml	7819
publish.avi	9484
STELINK.dll	81920
Telerik.Windows.Controls.dll	2957824
Telerik.Windows.Controls.GridView.dll	2466816
Telerik.Windows.Controls.Input.dll	1788928
Telerik.Windows.Controls.Navigation.dll	2741248
Telerik.Windows.Data.dll	440320
TheWiz6.exe	18630608
WKFS.CRAWiz.Contracts.dll	21456
WKFS.CRAWiz.CrossProcessUtility.dll	18896
WKFS.CRAWiz.DAL.dll	26064
WKFS.CRAWiz.DataAccess.dll	37328
WKFS.CRAWiz.Infrastructure.dll	65488
WKFS.CRAWiz.ModelManager.dll	67536
WKFS.CRAWiz.Report.DAL.dll	29136
WKFS.CRAWiz.Report.exe	5427664
WKFS.CRAWiz.Report.exe.config	3863



WKFS.CRAWiz.Report.Model.dll	15824
WKFS.CRAWiz.Service.dll	18384
WKFS.CRAWiz.ServiceProxy.dll	15824
WKFS.CRAWiz.UI.FileDialog.dll	30160
WKFS.CRAWiz.UI.Filter.Core.dll	72144
WKFS.CRAWiz.UI.Filter.dll	34256
WKFS.CRAWiz.UI.Geocoding.dll	17360
WKFS.CRAWiz.UI.MapDialog.dll	20944
WKFS.CRAWiz.UI.OpenDialog.dll	110032
WKFS.CRAWiz.UI.Utility.dll	13776
WKFS.Wiz.AutoUpdater.exe	98304
WKFS.Wiz.AutoUpdater.exe.config	978
WKFS.Wiz.Common.DAL.dll	25040
WKFS.Wiz.Context.dll	27600
WKFS.Wiz.Logging.dll	11728
WKFS.Wiz.WPFControls.dll	12752
WPFToolkit.dll	467288
WPFToolkit.Extended.dll	391680
xxf.su\$	7
xxl.su\$	7
Bin\ComboListEx.ocx	176128
Bin\CRInteface.dll	79912
Bin\CustomLarReportManager.dll	75824
Bin\dbdal.dll	84000
Bin\dunzip32.dll	139264
Bin\duzactx.dll	262144
Bin\DUZOCX32.OCX	71680
Bin\dzactx.dll	249856
Bin\dzip32.dll	167936
Bin\dzocx32.ocx	73728
Bin\dzstactx.dll	69632
Bin\DZSTAT32.OCX	42496
Bin\dz_ez32.dll	49152
Bin\FlatEx.dll	40960
Bin\GenericControls.ocx	442368
Bin\GeolUtil.dll	38952

Bin\GeoSetting.ocx	88104
Bin\ListBarEx.ocx	284712
Bin\PCiCannedImport.dll	739376
Bin\PCiCommonDlg.ocx	284712
Bin\PCiCustomReportDesigner.ocx	378936
Bin\PCiCustomReportManager.dll	165936
Bin\PCiDataAuditManager.dll	55344
Bin\PCiEncryption.dll	34856
Bin\PCiExportEngine.dll	391216
Bin\PCiExporter.ocx	47144
Bin\PCiGeoB.ocx	170024
Bin\PCiGeoI.ocx	362536
Bin\PCiLARTreeMan.dll	141352
Bin\PCiModifyStructure.dll	59440
Bin\PCiOutsourcer.dll	247848
Bin\PCiSecurity.dll	153640
Bin\PCiSubmissionService.dll	57344
Bin\PCiTabPersistence.dll	75824
Bin\PCiTaskScheduler.dll	256048
Bin\PCiTextProvider.dll	43056
Bin\PCiWB.ocx	423968
Bin\PCiWBService.dll	34856
Bin\PCiWebService.dll	63528
Bin\PCiWebUIFramework.dll	157744
Bin\PCiWizGeo2.dll	51240
Bin\PCiXFormService.dll	32768
Bin\PCiXTab.ocx	747560
Bin\prjDataXferAgent.dll	206896
Bin\RATAExportImport.dll	30768
Bin\ScheduleLib.dll	268352
Bin\SubClass.dll	40960
Bin\SubClassX.dll	40960
Bin\VBLibraryX.dll	104488
Bin\vbzip10.dll	147456
Bin\WKFS.WebMap.Services.dll	28112
Bin\WKFS.Wiz.Common.DAL.dll	18944

Bin\WKFS.Wiz.WebMap.Client.dll	28672
CRADData\Deposit.xls	13824
CRADData\edit.xml	561
CRADData\EditGUI.dat	10226
CRADData\EditGUI.xml	15461
CRADData\flwreports.xml	113542
CRADData\FunctionList.mdb	634880
CRADData\H_Lar_Report_HMZ4.xls	78848
CRADData\LocalInfo.mdb	380928
CRADData\reports.xml	871674
CRADData\Repository.mdb	471040
CRADData\wait.gif	4219
CRADData\Wait.htm	3566
CRADData\Custom Table\ct.ini	25
CRADData\Custom Table\Templates\Default.css	1074
CRADData\Custom Table\Templates\Template 1.css	2172
CRADData\Demog Publish\Assessment_area_indepth1_formula.xml	838
CRADData\Demog Publish\Assessment_area_indepth2_formula.xml	748
CRADData\Demog Publish\Assessment_area_indepth3_formula.xml	643
CRADData\Demog Publish\Assessment_area_indepth4_formula.xml	642
CRADData\Demog Publish\Assessment_area_indepth5_formula.xml	808
CRADData\Demog Publish\Assessment_area_indepth6_formula.xml	700
CRADData\Demog Publish\Assessment_area_indepth7_formula.xml	818
CRADData\Demog Publish\Assessment_area_indepth8_formula.xml	405
CRADData\Demog Publish\DemogReport_index.htm	64509
CRADData\Demog Publish\demog_bus.htm	41582
CRADData\Demog Publish\demog_bus_2.htm	32840
CRADData\Demog Publish\demog_bus_2_formula.xml	1990
CRADData\Demog Publish\demog_bus_3.htm	30118
CRADData\Demog Publish\demog_bus_3_formula.xml	1990
CRADData\Demog Publish\demog_data_summary1_formula.xml	540
CRADData\Demog Publish\demog_data_summary2_formula.xml	540
CRADData\Demog Publish\demog_data_summary3_formula.xml	600
CRADData\Demog Publish\demog_data_summary4_formula.xml	814
CRADData\Demog Publish\demog_data_summary5_formula.xml	470
CRADData\Demog Publish\demog_data_summary6_formula.xml	214

CRADData\Demog Publish\demog_data_summary7_formula.xml	567
CRADData\Demog Publish\demog_proj_1.htm	53093
CRADData\Demog Publish\demog_proj_2.htm	48807
CRADData\Demog Publish\demog_proj_3.htm	50178
CRADData\Demog Publish\demog_proj_4.htm	47114
CRADData\Demog Publish\Demog_US.htm	71534
CRADData\Demog Publish\Demog_US_1.htm	72861
CRADData\Demog Publish\Demog_US_2.htm	48034
CRADData\Demog Publish\Demog_US_3.htm	44669
CRADData\Demog Publish\Demog_US_4.htm	40875
CRADData\Demog Publish\ExaminerWorksheet B2_formula.xml	784
CRADData\Demog Publish\ExaminerWorksheet B2_formula2.xml	221
CRADData\Demog Publish\ExaminerWorksheet B2_formula3.xml	221
CRADData\Demog Publish\ExaminerWorksheet B2_formula4.xml	617
CRADData\Demog Publish\ExaminerWorksheet B2_formula5.xml	2587
CRADData\Demog Publish\Examiner_worksheet_c1_formula.xml	1810
CRADData\Demog Publish\Examiner_worksheet_c2_formula.xml	498
CRADData\Demog Publish\Examiner_worksheet_c3_formula.xml	2989
CRADData\Demog Publish\Examiner_worksheet_c4_formula.xml	391
CRADData\Demog Publish\Examiner_worksheet_Demog1_formula.xml	1810
CRADData\Demog Publish\Examiner_worksheet_Demog2_formula.xml	498
CRADData\Demog Publish\Examiner_worksheet_Demog3_formula.xml	2989
CRADData\Demog Publish\Examiner_worksheet_Demog4_formula.xml	395
CRADData\Demog Publish\genMove.js	2584
CRADData\Demog Publish\Headerdemog_bus_formula.xml	726
CRADData\Demog Publish\Headerdemog_proj_2_formula.xml	1294
CRADData\Demog Publish\Headerdemog_proj_3_formula.xml	1294
CRADData\Demog Publish\Headerdemog_proj_4_formula.xml	1292
CRADData\Demog Publish\HeaderDemog_US_2_formula.xml	493
CRADData\Demog Publish\HeaderDemog_US_3_formula.xml	604
CRADData\Demog Publish\HeaderDemog_US_4_formula.xml	604
CRADData\Demog Publish\HeaderDemog_US_formula.xml	719
CRADData\Demog Publish\HeaderwkshtC1_formula.xml	255
CRADData\Demog Publish\HeaderwkshtC2_formula.xml	258
CRADData\Demog Publish\HeaderwkshtC3_formula.xml	260
CRADData\Demog Publish\MainModule.js	93354

CRADData\Demog Publish\Projected_demog1_formula.xml	6797
CRADData\Demog Publish\Projected_demog2_formula.xml	9370
CRADData\Demog Publish\Projected_demog3_formula.xml	7690
CRADData\Demog Publish\Projected_demog4_formula.xml	7053
CRADData\Demog Publish\reports.xml	1112
CRADData\Demog Publish\ScriptX.cab	183600
CRADData\Demog Publish\smsx.cab	544998
CRADData\Demog Publish\Tran_demog_proj_1.htm	53436
CRADData\Demog Publish\Tran_demog_proj_2.htm	48837
CRADData\Demog Publish\Tran_demog_proj_3.htm	50206
CRADData\Demog Publish\Tran_demog_proj_4.htm	47143
CRADData\Demog Publish\Tran_Headerdemog_proj_1_formula.xml	719
CRADData\Demog Publish\Tran_Headerdemog_proj_2_formula.xml	1294
CRADData\Demog Publish\Tran_Headerdemog_proj_3_formula.xml	1294
CRADData\Demog Publish\Tran_Headerdemog_proj_4_formula.xml	1292
CRADData\Demog Publish\Tran_Projected_demog1_formula.xml	6814
CRADData\Demog Publish\Tran_Projected_demog2_formula.xml	9370
CRADData\Demog Publish\Tran_Projected_demog3_formula.xml	7690
CRADData\Demog Publish\Tran_Projected_demog4_formula.xml	7053
CRADData\Demog Publish\wkshtC1.htm	46941
CRADData\Demog Publish\wkshtC2.htm	34646
CRADData\Demog Publish\wkshtC3.htm	29858
CRADData\Demog Publish\Images\analysis.jpg	9848
CRADData\Demog Publish\Images\BrackDown_N.gif	418
CRADData\Demog Publish\Images\BrackDown_RL.gif	418
CRADData\Demog Publish\Images\Breakdown.gif	438
CRADData\Demog Publish\Images\Breakdown_Dw_Gif.gif	964
CRADData\Demog Publish\Images\Breakdown_Dw_Gif_1.gif	950
CRADData\Demog Publish\Images\Calculation_Dw_Gif.gif	1090
CRADData\Demog Publish\Images\Calculation_N.gif	490
CRADData\Demog Publish\Images\Calculation_RL.gif	596
CRADData\Demog Publish\Images\Calculation_Up_Gif.gif	486
CRADData\Demog Publish\Images\droparrow.jpg	4927
CRADData\Demog Publish\Images\GenerateReport_N.jpg	6765
CRADData\Demog Publish\Images\GenerateReport_RL.jpg	6908
CRADData\Demog Publish\Images\go_button.jpg	6096

CRADData\Demog Publish\Images\go_button2.jpg	6055
CRADData\Demog Publish\Images\Lines_middle.jpg	5898
CRADData\Demog Publish\Images\Line_Jpg.jpg	5066
CRADData\Demog Publish\Images\M 2.GIF	570
CRADData\Demog Publish\Images\m3.gif	415
CRADData\Demog Publish\Images\m4.gif	360
CRADData\Demog Publish\Images\M5.gif	408
CRADData\Demog Publish\Images\M6.gif	378
CRADData\Demog Publish\Images\masgeTool3.jpg	7322
CRADData\Demog Publish\Images\MENU 1.GIF	533
CRADData\Demog Publish\Images\Picture1.jpg	11277
CRADData\Demog Publish\Images\reportAllDecrip.jpg	7930
CRADData\Demog Publish\Images\report_menuedw_G.gif	445
CRADData\Demog Publish\Images\repot_menuedw_G.gif	581
CRADData\Demog Publish\Images\Screen_1.GIF	1238
CRADData\Demog Publish\Images>SelectAnaly_Dw_Gif.gif	1559
CRADData\Demog Publish\Images>SelectAnaly_Up_Gif.gif	4217
CRADData\Demog Publish\Images>SelectAnasis_N.gif	630
CRADData\Demog Publish\Images>SelectAnasis_RL.gif	781
CRADData\Demog Publish\Images\Short_menuedw_G.gif	316
CRADData\Demog Publish\Images\Short_menuedw_G.gif	346
CRADData\Demog Publish\Images\template5_05-over.gif	579
CRADData\Demog Publish\Images\template5_05.gif	418
CRADData\Demog Publish\Images\template5_06.gif	891
CRADData\Demog Publish\Images\template5_07-over.gif	241
CRADData\Demog Publish\Images\template5_07.gif	195
CRADData\Demog Publish\Images\template5_09-over.gif	245
CRADData\Demog Publish\Images\template5_09.gif	197
CRADData\Demog Publish\Images\template5_12-template5_03_u.gif	6761
CRADData\Demog Publish\Images\toolBarSTR.jpg	5204
CRADData\Demog Publish\Images\toolBar_1 copy.jpg	5585
CRADData\Demog Publish\Images\toolBar_1.jpg	7069
CRADData\Demog Publish\Images\toolBar_22.jpg	5302
CRADData\DemogReports\BusDemog.htm	38328
CRADData\DemogReports\BusDemog.xml	1166
CRADData\DemogReports\BusDemog_H.xml	244

CRADData\DemogReports\EconEmployBLS.htm	30135
CRADData\DemogReports\EconEmployBLS.xml	2418
CRADData\DemogReports\EconEmployBLS_H.xml	258
CRADData\DemogReports\EconEmployREIS.htm	30029
CRADData\DemogReports\EconEmployREIS.xml	2698
CRADData\DemogReports\EconEmployREIS_H.xml	259
CRADData\DemogReports\EconPatterns.htm	22388
CRADData\DemogReports\EconPatterns.xml	1526
CRADData\DemogReports\EconPatterns_H.xml	250
CRADData\DemogReports\EconPermit.htm	19272
CRADData\DemogReports\EconPermit.xml	861
CRADData\DemogReports\EconPermit_H.xml	248
CRADData\DemogReports\GeoDemogHousing.htm	35243
CRADData\DemogReports\GeoDemogHousing.xml	854
CRADData\DemogReports\GeoDemogHousing_H.xml	250
CRADData\DemogReports\GeoDemogIncome.htm	28992
CRADData\DemogReports\GeoDemogIncome.xml	1255
CRADData\DemogReports\GeoDemogIncome_H.xml	249
CRADData\DemogReports\GeoDemogLabor.htm	53265
CRADData\DemogReports\GeoDemogLabor.xml	497
CRADData\DemogReports\GeoDemogLabor_H.xml	236
CRADData\DemogReports\GeoDemogPopulation.htm	32849
CRADData\DemogReports\GeoDemogPopulation.xml	976
CRADData\DemogReports\GeoDemogPopulation_H.xml	231
CRADData\DemogReports\GeoDemogTracts.htm	29331
CRADData\DemogReports\GeoDemogTracts.xml	2030
CRADData\DemogReports\GeoDemogTracts_H.xml	237
CRADData\DemogReports\NotAvailable.htm	506
CRADData\DemogReports\ProjFamily.htm	23368
CRADData\DemogReports\ProjFamily.xml	899
CRADData\DemogReports\ProjFamily_H.xml	255
CRADData\DemogReports\ProjIncome.htm	26768
CRADData\DemogReports\ProjIncome.xml	1283
CRADData\DemogReports\ProjIncome_H.xml	240
CRADData\DemogReports\ProjPopulation.htm	28876
CRADData\DemogReports\ProjPopulation.xml	1864

CRADData\DemogReports\ProjPopulation_H.xml	244
CRADData\DemogReports\ProjTracts.htm	29274
CRADData\DemogReports\ProjTracts.xml	2152
CRADData\DemogReports\ProjTracts_H.xml	240
CRADData\DemogReports\Trn_ProjFamily.htm	24619
CRADData\DemogReports\Trn_ProjFamily.xml	899
CRADData\DemogReports\Trn_ProjFamily_H.xml	255
CRADData\DemogReports\Trn_ProjIncome.htm	27257
CRADData\DemogReports\Trn_ProjIncome.xml	1283
CRADData\DemogReports\Trn_ProjIncome_H.xml	318
CRADData\DemogReports\Trn_ProjPopulation.htm	29660
CRADData\DemogReports\Trn_ProjPopulation.xml	1864
CRADData\DemogReports\Trn_ProjPopulation_H.xml	244
CRADData\DemogReports\Trn_ProjTracts.htm	29633
CRADData\DemogReports\Trn_ProjTracts.xml	2152
CRADData\DemogReports\Trn_ProjTracts_H.xml	240
CRADData\Map\Defaults.cfg	15198
CRADData\Map\map.ini	34
CRADData\Map\map.mdb	262144
CRADData\Map\MapData\blank.DAT	66
CRADData\Map\MapData\blank.ID	0
CRADData\Map\MapData\blank.MAP	512
CRADData\Map\MapData\blank.TAB	142
CRADData\Map\MapData\cong109.DAT	4099
CRADData\Map\MapData\cong109.ID	1764
CRADData\Map\MapData\cong109.MAP	20103680
CRADData\Map\MapData\cong109.TAB	328
CRADData\Map\MapData\cong110.DAT	4099
CRADData\Map\MapData\cong110.ID	1764
CRADData\Map\MapData\cong110.MAP	39888896
CRADData\Map\MapData\cong110.TAB	328
CRADData\Map\MapData\cong111.DAT	22212
CRADData\Map\MapData\cong111.ID	1764
CRADData\Map\MapData\cong111.MAP	38754816
CRADData\Map\MapData\cong111.tab	350
CRADData\Map\MapData\cong113.DAT	22362



CRADData\Map\MapData\cong113.ID	1776
CRADData\Map\MapData\cong113.MAP	32024064
CRADData\Map\MapData\cong113.TAB	217
CRADData\Map\MapData\county.DAT	320162
CRADData\Map\MapData\county.ID	12928
CRADData\Map\MapData\county.IND	375808
CRADData\Map\MapData\county.MAP	28050944
CRADData\Map\MapData\county.TAB	247
CRADData\Map\MapData\county04.DAT	320162
CRADData\Map\MapData\county04.ID	12928
CRADData\Map\MapData\county04.IND	447488
CRADData\Map\MapData\county04.MAP	36712448
CRADData\Map\MapData\county04.TAB	263
CRADData\Map\MapData\county10.DAT	731078
CRADData\Map\MapData\county10.ID	12936
CRADData\Map\MapData\county10.IND	197120
CRADData\Map\MapData\county10.MAP	122400768
CRADData\Map\MapData\county10.TAB	255
CRADData\Map\MapData\gdtrr2004.DAT	1260121
CRADData\Map\MapData\gdtrr2004.ID	265268
CRADData\Map\MapData\gdtrr2004.IND	2122240
CRADData\Map\MapData\gdtrr2004.MAP	186729472
CRADData\Map\MapData\gdtrr2004.TAB	172
CRADData\Map\MapData\gdtrr2010.DAT	2075850
CRADData\Map\MapData\gdtrr2010.ID	296536
CRADData\Map\MapData\gdtrr2010.IND	3292160
CRADData\Map\MapData\gdtrr2010.MAP	277919232
CRADData\Map\MapData\gdtrr2010.TAB	172
CRADData\Map\MapData\msa.DAT	32428
CRADData\Map\MapData\msa.ID	1768
CRADData\Map\MapData\msa.IND	21504
CRADData\Map\MapData\msa.MAP	10990080
CRADData\Map\MapData\msa.TAB	232
CRADData\Map\MapData\msa04.DAT	34228
CRADData\Map\MapData\msa04.ID	1768
CRADData\Map\MapData\msa04.IND	26624

CRADData\Map\MapData\msa04.MAP	10990080
CRADData\Map\MapData\msa04.TAB	263
CRADData\Map\MapData\msa10.DAT	59218
CRADData\Map\MapData\msa10.ID	1984
CRADData\Map\MapData\msa10.IND	7168
CRADData\Map\MapData\msa10.MAP	26225152
CRADData\Map\MapData\msa10.TAB	240
CRADData\Map\MapData\MSA14.DAT	61360
CRADData\Map\MapData\MSA14.ID	2056
CRADData\Map\MapData\MSA14.IND	9216
CRADData\Map\MapData\MSA14.MAP	26600448
CRADData\Map\MapData\MSA14.TAB	240
CRADData\Map\MapData\state.DAT	6010
CRADData\Map\MapData\state.ID	224
CRADData\Map\MapData\state.IND	1024
CRADData\Map\MapData\state.MAP	8755200
CRADData\Map\MapData\state.TAB	212
CRADData\Map\MapData\tr2000.DAT	2524800
CRADData\Map\MapData\tr2000.ID	265748
CRADData\Map\MapData\tr2000.IND	2834944
CRADData\Map\MapData\tr2000.MAP	113565696
CRADData\Map\MapData\tr2000.TAB	242
CRADData\Map\MapData\tr2004.DAT	2525294
CRADData\Map\MapData\tr2004.ID	265800
CRADData\Map\MapData\tr2004.IND	2835456
CRADData\Map\MapData\tr2004.MAP	141179392
CRADData\Map\MapData\tr2004.TAB	242
CRADData\Map\MapData\Tr2010.DAT	2891420
CRADData\Map\MapData\Tr2010.ID	296536
CRADData\Map\MapData\Tr2010.IND	3292160
CRADData\Map\MapData\Tr2010.MAP	316713472
CRADData\Map\MapData\Tr2010.TAB	254
CRADData\Map\MapData\Tract.DAT	2615608
CRADData\Map\MapData\Tract.ID	249084
CRADData\Map\MapData\Tract.IND	2472448
CRADData\Map\MapData\Tract.MAP	105914880

CRADData\Map\MapData\Tract.TAB	262
CRADData\Map\Sample\CCORD1.TXT	23037
CRADData\Map\Sample\CCORD2.TXT	17940
CRADData\Map\Temp\cosmetic.id	0
CRADData\Reports\Action_VS_Purpose_Type_hmz4_Data.xml	18704
CRADData\Reports\Action_v_Purp_Type_Col_amt.htm	25488
CRADData\Reports\Action_v_Purp_Type_Col_amt_formula.xml	1015
CRADData\Reports\Action_v_Purp_Type_Col_amt_hmz4.htm	30072
CRADData\Reports\Action_v_Purp_Type_Col_amt_hmz4_formula.xml	1015
CRADData\Reports\Action_v_Purp_Type_Col_cnt.htm	25466
CRADData\Reports\Action_v_Purp_Type_Col_cnt_formula.xml	1016
CRADData\Reports\Action_v_Purp_Type_Col_cnt_hmz4.htm	30072
CRADData\Reports\Action_v_Purp_Type_Col_cnt_hmz4_formula.xml	1007
CRADData\Reports\Action_v_Purp_Type_Grand_amt.htm	25453
CRADData\Reports\Action_v_Purp_Type_Grand_amt_formula.xml	1016
CRADData\Reports\Action_v_Purp_Type_Grand_amt_hmz4.htm	30077
CRADData\Reports\Action_v_Purp_Type_Grand_amt_hmz4_formula.xml	1007
CRADData\Reports\Action_v_Purp_Type_Grand_cnt.htm	25465
CRADData\Reports\Action_v_Purp_Type_Grand_cnt_formula.xml	1010
CRADData\Reports\Action_v_Purp_Type_Grand_cnt_hmz4.htm	30078
CRADData\Reports\Action_v_Purp_Type_Grand_cnt_hmz4_formula.xml	1010
CRADData\Reports\Action_v_Purp_Type_LA.htm	25400
CRADData\Reports\Action_v_Purp_Type_LA_formula.xml	923
CRADData\Reports\Action_v_Purp_Type_LA_hmz4.htm	30060
CRADData\Reports\Action_v_Purp_Type_LA_hmz4_formula.xml	923
CRADData\Reports\Action_v_Purp_Type_NA.htm	25372
CRADData\Reports\Action_v_Purp_Type_NA_formula.xml	901
CRADData\Reports\Action_v_Purp_Type_NA_hmz4.htm	30074
CRADData\Reports\Action_v_Purp_Type_NA_hmz4_formula.xml	901
CRADData\Reports\Action_v_Purp_Type_Row_amt.htm	25466
CRADData\Reports\Action_v_Purp_Type_Row_amt_formula.xml	1022
CRADData\Reports\Action_v_Purp_Type_Row_amt_hmz4.htm	30073
CRADData\Reports\Action_v_Purp_Type_Row_amt_hmz4_formula.xml	1022
CRADData\Reports\Action_v_Purp_Type_Row_cnt.htm	25469
CRADData\Reports\Action_v_Purp_Type_Row_cnt_formula.xml	1016
CRADData\Reports\Action_v_Purp_Type_Row_cnt_hmz4.htm	30070

CRADData\Reports\Action_v_Purp_Type_Row_cnt_hmz4_formula.xml	1016
CRADData\Reports\Action_v_Sex_amt.htm	22586
CRADData\Reports\Action_v_Sex_amt_formula.xml	1130
CRADData\Reports\Action_v_Sex_cnt.htm	22587
CRADData\Reports\Action_v_Sex_cnt_amt.htm	26851
CRADData\Reports\Action_v_Sex_cnt_amt_formula.xml	1580
CRADData\Reports\Action_v_Sex_cnt_formula.xml	1122
CRADData\Reports\Action_v_Sex_Col_amt.htm	22601
CRADData\Reports\Action_v_Sex_Col_amt_formula.xml	1286
CRADData\Reports\Action_v_Sex_Col_cnt.htm	22600
CRADData\Reports\Action_v_Sex_Col_cnt_formula.xml	1276
CRADData\Reports\Action_v_Sex_Grand_amt.htm	22608
CRADData\Reports\Action_v_Sex_Grand_amt_formula.xml	1276
CRADData\Reports\Action_v_Sex_Grand_cnt.htm	22605
CRADData\Reports\Action_v_Sex_Grand_cnt_formula.xml	1266
CRADData\Reports\Action_v_Sex_Row_amt.htm	22601
CRADData\Reports\Action_v_Sex_Row_amt_formula.xml	1286
CRADData\Reports\Action_v_Sex_Row_cnt.htm	22600
CRADData\Reports\Action_v_Sex_Row_cnt_formula.xml	1276
CRADData\Reports\Action_v_Tr_Inc_amt.htm	19295
CRADData\Reports\Action_v_Tr_Inc_amt_formula.xml	1180
CRADData\Reports\Action_v_Tr_Inc_cnt.htm	21746
CRADData\Reports\Action_v_Tr_Inc_cnt_amt.htm	25956
CRADData\Reports\Action_v_Tr_Inc_cnt_amt_formula.xml	1693
CRADData\Reports\Action_v_Tr_Inc_cnt_formula.xml	1180
CRADData\Reports\Action_v_Tr_Inc_Col_amt.htm	26583
CRADData\Reports\Action_v_Tr_Inc_Col_amt_formula.xml	1952
CRADData\Reports\Action_v_Tr_Inc_Col_cnt.htm	26614
CRADData\Reports\Action_v_Tr_Inc_Col_cnt_amt.htm	31091
CRADData\Reports\Action_v_Tr_Inc_Col_cnt_amt_formula.xml	7671
CRADData\Reports\Action_v_Tr_Inc_Col_cnt_formula.xml	1940
CRADData\Reports\Action_v_Tr_Inc_Grand_amt.htm	26592
CRADData\Reports\Action_v_Tr_Inc_Grand_amt_formula.xml	1938
CRADData\Reports\action_v_Tr_Inc_Grand_cnt.htm	26646
CRADData\Reports\action_v_tr_inc_grand_cnt_amt.htm	31145
CRADData\Reports\Action_v_tr_inc_grand_cnt_amt_formula.xml	7611

CRADData\Reports\Action_v_Tr_Inc_Grand_cnt_formula.xml	1928
CRADData\Reports\Action_v_Tr_Inc_Row_amt.htm	26586
CRADData\Reports\Action_v_Tr_Inc_Row_amt_formula.xml	1952
CRADData\Reports\Action_v_Tr_Inc_Row_cnt.htm	26693
CRADData\Reports\Action_v_tr_inc_row_cnt_amt.htm	31344
CRADData\Reports\Action_v_tr_inc_row_cnt_amt_formula.xml	7671
CRADData\Reports\Action_v_Tr_Inc_Row_cnt_formula.xml	1940
CRADData\Reports\BranchLocationReport.rdlc	122103
CRADData\Reports\Census_Trac_Detail.htm	1038
CRADData\Reports\Census_Trac_Detail_footer.xml	259
CRADData\Reports\Census_Trac_Detail_formula.xml	13649
CRADData\Reports\Census_Trac_Detail_Header.xml	736
CRADData\Reports\Columnar.css	750
CRADData\Reports\columnar.htm	33636
CRADData\Reports\ColumnarSample.html	661
CRADData\Reports\CRA_IRS.htm	952
CRADData\Reports\CRA_IRS_Footer.xml	167
CRADData\Reports\cra_IRS_formula.xml	27886
CRADData\Reports\CRA_IRS_Header.xml	1217
CRADData\Reports\CRA_Sub.htm	959
CRADData\Reports\CRA_Sub_Footer.xml	164
CRADData\Reports\CRA_Sub_formula.xml	19195
CRADData\Reports\CRA_Sub_Header.xml	1302
CRADData\Reports\cra_trans.htm	960
CRADData\Reports\cra_trans_Footer.xml	136
CRADData\Reports\cra_trans_formula.xml	16264
CRADData\Reports\cra_trans_Header.xml	1218
CRADData\Reports\C_Disc_12.htm	960
CRADData\Reports\C_Disc_12_Footer.xml	199
CRADData\Reports\C_Disc_12_formula.xml	41631
CRADData\Reports\C_Disc_12_Header.xml	672
CRADData\Reports\C_Disc_34.htm	974
CRADData\Reports\C_Disc_34_Footer.xml	198
CRADData\Reports\C_Disc_34_formula.xml	27454
CRADData\Reports\C_Disc_34_Header.xml	653
CRADData\Reports\C_Disc_5.htm	964

CRADData\Reports\C_Disc_5_Footer.xml	199
CRADData\Reports\C_Disc_5_formula.xml	25639
CRADData\Reports\C_Disc_5_Header.xml	649
CRADData\Reports\C_disc_6.htm	1003
CRADData\Reports\C_Disc_6_Footer.xml	199
CRADData\Reports\C_Disc_6_formula.xml	9885
CRADData\Reports\C_Disc_6_Header.xml	649
CRADData\Reports\c_lr.htm	31847
CRADData\Reports\default.css	2766
CRADData\Reports\Denial_Justification_Analysis_01.htm	19420
CRADData\Reports\Denial_Justification_Analysis_01_formula.xml	1238
CRADData\Reports\Denial_Justification_Analysis_02.htm	21722
CRADData\Reports\Denial_Justification_Analysis_02_formula.xml	1961
CRADData\Reports\Denial_Justification_Analysis_03.htm	26070
CRADData\Reports\Denial_Justification_Analysis_03_formula.xml	3815
CRADData\Reports\Denial_Justification_Analysis_04.htm	18988
CRADData\Reports\Denial_Justification_Analysis_04_formula.xml	1237
CRADData\Reports\Denial_Justification_Analysis_05.htm	20529
CRADData\Reports\Denial_Justification_Analysis_05_formula.xml	1508
CRADData\Reports\Denial_Justification_Analysis_06.htm	20029
CRADData\Reports\Denial_Justification_Analysis_06_formula.xml	1673
CRADData\Reports\Denial_Justification_Analysis_07.htm	18899
CRADData\Reports\Denial_Justification_Analysis_07_formula.xml	1103
CRADData\Reports\Denial_Justification_Analysis_08.htm	18490
CRADData\Reports\Denial_Justification_Analysis_08_formula.xml	1098
CRADData\Reports\Denial_Justification_Analysis_09.htm	18350
CRADData\Reports\Denial_Justification_Analysis_09_formula.xml	1095
CRADData\Reports\dep_dist_tr_inc.htm	24979
CRADData\Reports\dep_dist_tr_inc_formula.xml	888
CRADData\Reports\dep_dist_tr_min.htm	26305
CRADData\Reports\dep_dist_tr_min_formula.xml	890
CRADData\Reports\dep_low_mod_tr_test1_formula.xml	641
CRADData\Reports\dep_low_mod_tr_test1_formula2.xml	921
CRADData\Reports\dep_low_mod_tr_test2_formula.xml	641
CRADData\Reports\dep_low_mod_tr_test2_formula2.xml	921
CRADData\Reports\dep_low_mod_tr_test3_formula.xml	650

CRADData\Reports\dep_low_mod_tr_test3_formula2.xml	927
CRADData\Reports\dep_low_mod_tr_test_1.htm	41398
CRADData\Reports\dep_low_mod_tr_test_2.htm	40997
CRADData\Reports\dep_low_mod_tr_test_3.htm	40226
CRADData\Reports\dep_min_tr_test_1.htm	41391
CRADData\Reports\dep_min_tr_test_formula.xml	649
CRADData\Reports\dep_min_tr_test_formula2.xml	925
CRADData\Reports\Dep_Mkt_Shr_County.htm	1026
CRADData\Reports\Dep_Mkt_Shr_County_Footer.xml	227
CRADData\Reports\Dep_Mkt_Shr_County_formula.xml	17906
CRADData\Reports\Dep_Mkt_Shr_County_Header.xml	558
CRADData\Reports\Dep_Mkt_Shr_Lender.htm	1026
CRADData\Reports\Dep_Mkt_Shr_Lender_Footer.xml	224
CRADData\Reports\Dep_Mkt_Shr_Lender_formula.xml	17544
CRADData\Reports\Dep_Mkt_Shr_Lender_Header.xml	568
CRADData\Reports\Dep_Mkt_Shr_MSA.htm	1014
CRADData\Reports\Dep_Mkt_Shr_MSA_Footer.xml	224
CRADData\Reports\Dep_Mkt_Shr_MSA_formula.xml	17657
CRADData\Reports\Dep_Mkt_Shr_MSA_Header.xml	552
CRADData\Reports\Dep_Mkt_Shr_Page_Break_County.htm	1070
CRADData\Reports\Dep_Mkt_Shr_Page_Break_County_Footer.xml	226
CRADData\Reports\Dep_Mkt_Shr_Page_Break_County_formula.xml	18144
CRADData\Reports\Dep_Mkt_Shr_Page_Break_County_Header.xml	565
CRADData\Reports\Dep_Mkt_Shr_Page_Break_MSA.htm	1058
CRADData\Reports\Dep_Mkt_Shr_Page_Break_MSA_Footer.xml	224
CRADData\Reports\Dep_Mkt_Shr_Page_Break_MSA_formula.xml	18086
CRADData\Reports\Dep_Mkt_Shr_Page_Break_MSA_Header.xml	565
CRADData\Reports\Dep_Mkt_Shr_Page_Break_Tract.htm	1066
CRADData\Reports\Dep_Mkt_Shr_Page_Break_Tract_Footer.xml	224
CRADData\Reports\Dep_Mkt_Shr_Page_Break_Tract_Formula.xml	18178
CRADData\Reports\Dep_Mkt_Shr_Page_Break_Tract_Header.xml	565
CRADData\Reports\Dep_Mkt_Shr_Tract.htm	1022
CRADData\Reports\Dep_Mkt_Shr_Tract_Footer.xml	224
CRADData\Reports\Dep_Mkt_Shr_Tract_formula.xml	17945
CRADData\Reports\Dep_Mkt_Shr_Tract_Header.xml	563
CRADData\Reports\Disclosur_Report_Option.htm	3795

CRADData\Reports\Disclosur_Report_Option2.htm	3294
CRADData\Reports\Disposition_Summary_amt.htm	53406
CRADData\Reports\Disposition_Summary_amt_Col.htm	53433
CRADData\Reports\Disposition_Summary_amt_Col_formula.xml	5977
CRADData\Reports\Disposition_Summary_amt_formula.xml	4953
CRADData\Reports\Disposition_Summary_amt_Row.htm	53266
CRADData\Reports\Disposition_Summary_amt_Row_formula.xml	5977
CRADData\Reports\Disposition_Summary_cnt.htm	53240
CRADData\Reports\Disposition_Summary_cnt_Col.htm	53267
CRADData\Reports\Disposition_Summary_cnt_Col_formula.xml	5977
CRADData\Reports\Disposition_Summary_cnt_formula.xml	4953
CRADData\Reports\Disposition_Summary_cnt_Row.htm	53268
CRADData\Reports\Disposition_Summary_cnt_Row_formula.xml	5977
CRADData\Reports\edit_det_err.htm	972
CRADData\Reports\edit_det_err_cra.htm	988
CRADData\Reports\edit_det_err_cra_Footer.xml	224
CRADData\Reports\edit_det_err_cra_formula.xml	17973
CRADData\Reports\edit_det_err_cra_grp.htm	1004
CRADData\Reports\edit_det_err_cra_grp_Footer.xml	224
CRADData\Reports\edit_det_err_cra_grp_formula.xml	18539
CRADData\Reports\edit_det_err_cra_grp_Header.xml	838
CRADData\Reports\edit_det_err_cra_Header.xml	845
CRADData\Reports\edit_det_err_Footer.xml	224
CRADData\Reports\edit_det_err_formula.xml	20401
CRADData\Reports\edit_det_err_grp.htm	988
CRADData\Reports\edit_det_err_grp_Footer.xml	224
CRADData\Reports\edit_det_err_grp_formula.xml	20518
CRADData\Reports\edit_det_err_grp_Header.xml	866
CRADData\Reports\edit_det_err_Header.xml	829
CRADData\Reports\edit_det_err_hmz4.htm	992
CRADData\Reports\edit_det_err_hmz4_footer.xml	220
CRADData\Reports\edit_det_err_hmz4_formula.xml	25199
CRADData\Reports\edit_det_err_hmz4_header.xml	867
CRADData\Reports\edit_line_err.htm	976
CRADData\Reports\edit_line_err_Footer.xml	224
CRADData\Reports\edit_line_err_formula.xml	10512



CRADData\Reports\edit_line_err_grp.htm	992
CRADData\Reports\edit_line_err_grp_Footer.xml	224
CRADData\Reports\edit_line_err_grp_formula.xml	10643
CRADData\Reports\edit_line_err_grp_Header.xml	829
CRADData\Reports\edit_line_err_Header.xml	857
CRADData\Reports\edit_sum_err.htm	972
CRADData\Reports\edit_sum_err_Footer.xml	224
CRADData\Reports\edit_sum_err_formula.xml	15141
CRADData\Reports\edit_sum_err_grp.htm	988
CRADData\Reports\edit_sum_err_grp_Footer.xml	224
CRADData\Reports\edit_sum_err_grp_formula.xml	15363
CRADData\Reports\edit_sum_err_grp_Header.xml	860
CRADData\Reports\edit_sum_err_Header.xml	860
CRADData\Reports\Eth_Race_v_Action_02_Data.xml	55178
CRADData\Reports\Eth_Race_v_Action_amt_01.htm	45409
CRADData\Reports\Eth_Race_v_Action_amt_01_formula.xml	3403
CRADData\Reports\Eth_Race_v_Action_amt_02.htm	45444
CRADData\Reports\Eth_Race_v_Action_amt_02_formula.xml	3363
CRADData\Reports\Eth_Race_v_Action_amt_Col_01.htm	45427
CRADData\Reports\Eth_Race_v_Action_amt_Col_01_formula.xml	4369
CRADData\Reports\Eth_Race_v_Action_amt_Col_02.htm	45196
CRADData\Reports\Eth_Race_v_Action_amt_Col_02_formula.xml	4329
CRADData\Reports\Eth_Race_v_Action_amt_Grand_01.htm	45042
CRADData\Reports\Eth_Race_v_Action_amt_Grand_01_formula.xml	4315
CRADData\Reports\Eth_Race_v_Action_amt_Grand_02.htm	44790
CRADData\Reports\Eth_Race_v_Action_amt_Grand_02_formula.xml	4275
CRADData\Reports\Eth_Race_v_Action_amt_Row_01.htm	45422
CRADData\Reports\Eth_Race_v_Action_amt_Row_01_formula.xml	4369
CRADData\Reports\Eth_Race_v_Action_amt_Row_02.htm	44670
CRADData\Reports\Eth_Race_v_Action_amt_Row_02_formula.xml	4329
CRADData\Reports\Eth_Race_v_Action_amt_RtoW_01.htm	46351
CRADData\Reports\Eth_Race_v_Action_amt_RtoW_01_formula.xml	4583
CRADData\Reports\Eth_Race_v_Action_amt_RtoW_02.htm	46840
CRADData\Reports\Eth_Race_v_Action_amt_RtoW_02_formula.xml	4463
CRADData\Reports\Eth_Race_v_Action_cntamt_02.htm	68545
CRADData\Reports\Eth_Race_v_Action_cntamt_02_formula.xml	5325

CRADData\Reports\Eth_Race_v_Action_cnt_01.htm	45395
CRADData\Reports\Eth_Race_v_Action_cnt_01_formula.xml	3403
CRADData\Reports\Eth_Race_v_Action_cnt_02.htm	45441
CRADData\Reports\Eth_Race_v_Action_cnt_02_formula.xml	3363
CRADData\Reports\Eth_Race_v_Action_cnt_amt_01.htm	63282
CRADData\Reports\Eth_Race_v_Action_cnt_ant_01_formula.xml	5313
CRADData\Reports\Eth_Race_v_Action_cnt_Col_01.htm	45030
CRADData\Reports\Eth_Race_v_Action_cnt_Col_01_formula.xml	4369
CRADData\Reports\Eth_Race_v_Action_cnt_Col_02.htm	44811
CRADData\Reports\Eth_Race_v_Action_cnt_Col_02_formula.xml	4329
CRADData\Reports\Eth_Race_v_Action_cnt_Grand_01.htm	45433
CRADData\Reports\Eth_Race_v_Action_cnt_Grand_01_formula.xml	4315
CRADData\Reports\Eth_Race_v_Action_cnt_Grand_02.htm	44820
CRADData\Reports\Eth_Race_v_Action_cnt_Grand_02_formula.xml	4275
CRADData\Reports\Eth_Race_v_Action_cnt_Row_01.htm	45025
CRADData\Reports\Eth_Race_v_Action_cnt_Row_01_formula.xml	4369
CRADData\Reports\Eth_Race_v_Action_cnt_Row_02.htm	44670
CRADData\Reports\Eth_Race_v_Action_cnt_Row_02_formula.xml	4329
CRADData\Reports\Eth_Race_v_Action_cnt_RtoW_01.htm	46622
CRADData\Reports\Eth_Race_v_Action_cnt_RtoW_01_formula.xml	4583
CRADData\Reports\Eth_Race_v_Action_cnt_RtoW_02.htm	46839
CRADData\Reports\Eth_Race_v_Action_cnt_RtoW_02_formula.xml	4463
CRADData\Reports\Eth_Race_v_App_Inc_amt_01.htm	50486
CRADData\Reports\Eth_Race_v_App_Inc_amt_01_Col.htm	50518
CRADData\Reports\Eth_Race_v_App_Inc_amt_01_Col_formula.xml	5542
CRADData\Reports\Eth_Race_v_App_Inc_amt_01_formula.xml	4180
CRADData\Reports\Eth_Race_v_App_Inc_amt_01_Grand.htm	50523
CRADData\Reports\Eth_Race_v_App_Inc_amt_01_Grand_formula.xml	5470
CRADData\Reports\Eth_Race_v_App_Inc_amt_01_Row.htm	50511
CRADData\Reports\Eth_Race_v_App_Inc_amt_01_Row_formula.xml	5542
CRADData\Reports\Eth_Race_v_App_Inc_amt_01_RtoW.htm	51758
CRADData\Reports\Eth_Race_v_App_Inc_amt_01_RtoW_formula.xml	5610
CRADData\Reports\Eth_Race_v_App_Inc_amt_01_SupCol.htm	33837
CRADData\Reports\Eth_Race_v_App_Inc_amt_01_SupCol_formula.xml	3042
CRADData\Reports\Eth_Race_v_App_Inc_amt_02.htm	48083
CRADData\Reports\Eth_Race_v_App_Inc_amt_02_formula.xml	4069

CRADData\Reports\Eth_Race_v_App_Inc_amt_Col_02.htm	48339
CRADData\Reports\Eth_Race_v_App_Inc_amt_Col_02_formula.xml	5413
CRADData\Reports\Eth_Race_v_App_Inc_amt_Grand_02.htm	47984
CRADData\Reports\Eth_Race_v_App_Inc_amt_Grand_02_formula.xml	5341
CRADData\Reports\Eth_Race_v_App_Inc_amt_Row_02.htm	47972
CRADData\Reports\Eth_Race_v_App_Inc_amt_Row_02_formula.xml	5414
CRADData\Reports\Eth_Race_v_App_Inc_amt_RtoW_02.htm	49379
CRADData\Reports\Eth_Race_v_App_Inc_amt_RtoW_02_formula.xml	5464
CRADData\Reports\Eth_Race_v_App_Inc_amt_SupCol_02.htm	36601
CRADData\Reports\Eth_Race_v_App_Inc_amt_SupCol_02_formula.xml	3856
CRADData\Reports\Eth_Race_v_App_Inc_cnt_01.htm	50491
CRADData\Reports\Eth_Race_v_App_Inc_cnt_01_Col.htm	50515
CRADData\Reports\Eth_Race_v_App_Inc_cnt_01_Col_formula.xml	5542
CRADData\Reports\Eth_Race_v_App_Inc_cnt_01_formula.xml	4180
CRADData\Reports\Eth_Race_v_App_Inc_cnt_01_Grand.htm	50517
CRADData\Reports\Eth_Race_v_App_Inc_cnt_01_Grand_formula.xml	5470
CRADData\Reports\Eth_Race_v_App_Inc_cnt_01_Row.htm	50512
CRADData\Reports\Eth_Race_v_App_Inc_cnt_01_Row_formula.xml	5542
CRADData\Reports\Eth_Race_v_App_Inc_cnt_01_RtoW.htm	51716
CRADData\Reports\Eth_Race_v_App_Inc_cnt_01_RtoW_formula.xml	5610
CRADData\Reports\Eth_Race_v_App_Inc_cnt_01_SupCol.htm	33691
CRADData\Reports\Eth_Race_v_App_Inc_cnt_01_SupCol_formula.xml	2922
CRADData\Reports\Eth_Race_v_App_Inc_cnt_02.htm	48194
CRADData\Reports\Eth_Race_v_App_Inc_cnt_02_formula.xml	4069
CRADData\Reports\Eth_Race_v_App_Inc_cnt_Col_02.htm	50912
CRADData\Reports\Eth_Race_v_App_Inc_cnt_Col_02_formula.xml	5413
CRADData\Reports\Eth_Race_v_App_Inc_cnt_Grand_02.htm	48121
CRADData\Reports\Eth_Race_v_App_Inc_cnt_Grand_02_formula.xml	5341
CRADData\Reports\Eth_Race_v_App_Inc_cnt_Row_02.htm	51733
CRADData\Reports\Eth_Race_v_App_Inc_cnt_Row_02_formula.xml	5413
CRADData\Reports\Eth_Race_v_App_Inc_cnt_RtoW_02.htm	49378
CRADData\Reports\Eth_Race_v_App_Inc_cnt_RtoW_02_formula.xml	5591
CRADData\Reports\Eth_Race_v_App_Inc_cnt_SupCol_02.htm	36598
CRADData\Reports\Eth_Race_v_App_Inc_cnt_SupCol_02_formula.xml	3696
CRADData\Reports\Eth_Std_Summary_amt.htm	56875
CRADData\Reports\Eth_Std_Summary_amt_col.htm	56318

CRADData\Reports\Eth_Std_Summary_amt_col_formula.xml	6698
CRADData\Reports\Eth_Std_Summary_amt_formula.xml	6711
CRADData\Reports\Eth_Std_Summary_amt_OrigPurc.htm	56910
CRADData\Reports\Eth_Std_Summary_amt_row.htm	56320
CRADData\Reports\Eth_Std_Summary_amt_row_formula.xml	6722
CRADData\Reports\Eth_Std_Summary_cnt.htm	56866
CRADData\Reports\Eth_Std_Summary_cnt_amt.htm	79708
CRADData\Reports\Eth_Std_Summary_cnt_amt_formula.xml	12258
CRADData\Reports\Eth_Std_Summary_cnt_amt_OrigPurc.htm	79758
CRADData\Reports\Eth_Std_Summary_cnt_amt_OrigPurc_formula.xml	12258
CRADData\Reports\Eth_Std_Summary_cnt_col.htm	56312
CRADData\Reports\Eth_Std_Summary_cnt_col_formula.xml	6610
CRADData\Reports\Eth_Std_Summary_cnt_formula.xml	7171
CRADData\Reports\Eth_Std_Summary_cnt_OrigPurc.htm	56903
CRADData\Reports\Eth_Std_Summary_cnt_row.htm	56311
CRADData\Reports\Eth_Std_Summary_cnt_row_formula.xml	6634
CRADData\Reports\Eth_Summary_Action_amt.htm	71618
CRADData\Reports\Eth_Summary_Action_amt_OrigPurc.htm	71307
CRADData\Reports\Eth_Summary_Action_cnt.htm	71257
CRADData\Reports\Eth_Summary_Action_cnt_OrigPurc.htm	71091
CRADData\Reports\Eth_Summary_Action_Demog_amt.htm	78108
CRADData\Reports\Eth_Summary_Action_Demog_amt_formula.xml	9830
CRADData\Reports\Eth_Summary_Action_Demog_cnt.htm	78164
CRADData\Reports\Eth_Summary_Action_Demog_cnt_formula.xml	8964
CRADData\Reports\Eth_Summary_Action_amt_formula.xml	8300
CRADData\Reports\Eth_Summary_Action_cnt_formula.xml	8169
CRADData\Reports\Eth_Summary_Appl_Incm_amt.htm	74216
CRADData\Reports\Eth_Summary_Appl_Incm_amt_formula.xml	10172
CRADData\Reports\Eth_Summary_Appl_Incm_cnt.htm	74745
CRADData\Reports\Eth_Summary_Appl_Incm_cnt_formula.xml	11072
CRADData\Reports\Eth_Summary_App_Race_amt.htm	63337
CRADData\Reports\Eth_Summary_App_Race_amt_formula.xml	8906
CRADData\Reports\Eth_Summary_App_Race_cnt.htm	63298
CRADData\Reports\Eth_Summary_App_Race_cnt_formula.xml	8766
CRADData\Reports\Eth_Summary_Purp_Type_amt.htm	80828
CRADData\Reports\Eth_Summary_Purp_Type_amt_formula.xml	10276

CRADData\Reports\Eth_Summary_Purp_Type_cnt.htm	81132
CRADData\Reports\Eth_Summary_Purp_Type_cnt_formula.xml	10996
CRADData\Reports\Eth_Summary_Trct_Incm_amt.htm	69433
CRADData\Reports\Eth_Summary_Trct_Incm_amt_formula.xml	10168
CRADData\Reports\Eth_Summary_Trct_Incm_cnt.htm	72792
CRADData\Reports\Eth_Summary_Trct_Incm_cnt_formula.xml	11072
CRADData\Reports\Examiner Worksheet J.htm	32428
CRADData\Reports\Examiner Worksheet J_hmz4.htm	40357
CRADData\Reports\ExaminerWorksheet A.htm	374081
CRADData\Reports\ExaminerWorksheet B1.htm	58145
CRADData\Reports\ExaminerWorksheet B1_formula.xml	1076
CRADData\Reports\ExaminerWorksheet B1_formula2.xml	888
CRADData\Reports\ExaminerWorksheet B1_formula3.xml	1345
CRADData\Reports\ExaminerWorksheet B1_hmz4.htm	44111
CRADData\Reports\ExaminerWorksheet B1_hmz4_formula1.xml	899
CRADData\Reports\ExaminerWorksheet B1_hmz4_formula2.xml	1229
CRADData\Reports\ExaminerWorksheet B2.htm	62958
CRADData\Reports\ExaminerWorksheet B2_formula.xml	998
CRADData\Reports\ExaminerWorksheet B2_formula2.xml	338
CRADData\Reports\ExaminerWorksheet B2_formula3.xml	1237
CRADData\Reports\ExaminerWorksheet B2_formula4.xml	1253
CRADData\Reports\ExaminerWorksheet B2_hmz4.htm	49941
CRADData\Reports\ExaminerWorksheet B2_hmz4_formula1.xml	874
CRADData\Reports\ExaminerWorksheet B2_hmz4_formula2.xml	1173
CRADData\Reports\ExaminerWorksheet B3.htm	61690
CRADData\Reports\ExaminerWorksheet B3_formula.xml	2041
CRADData\Reports\ExaminerWorksheet B3_formula2.xml	1064
CRADData\Reports\ExaminerWorksheet B3_formula3.xml	1555
CRADData\Reports\ExaminerWorksheet B3_hmz4.htm	42748
CRADData\Reports\ExaminerWorksheet B3_hmz4_formula1.xml	650
CRADData\Reports\ExaminerWorksheet B3_hmz4_formula2.xml	1111
CRADData\Reports\ExaminerWorksheet B4.htm	48754
CRADData\Reports\ExaminerWorksheet B4_formula.xml	742
CRADData\Reports\ExaminerWorksheet B4_formula2.xml	1494
CRADData\Reports\ExaminerWorksheet B4_hmz4.htm	52818
CRADData\Reports\ExaminerWorksheet B4_hmz4_formula1.xml	960

CRADData\Reports\ExaminerWorksheet B4_hmz4_formula2.xml	338
CRADData\Reports\ExaminerWorksheet B4_hmz4_formula3.xml	1624
CRADData\Reports\ExaminerWorksheet B5_hmz4.htm	63654
CRADData\Reports\ExaminerWorksheet B5_hmz4_formula1.xml	1606
CRADData\Reports\ExaminerWorksheet B5_hmz4_formula2.xml	961
CRADData\Reports\ExaminerWorksheet B5_hmz4_formula3.xml	1214
CRADData\Reports\ExaminerWorksheet B6_hmz4.htm	59720
CRADData\Reports\ExaminerWorksheet B6_hmz4_formula1.xml	730
CRADData\Reports\ExaminerWorksheet B6_hmz4_formula2.xml	887
CRADData\Reports\ExaminerWorksheet B6_hmz4_formula3.xml	1360
CRADData\Reports\ExaminerWorksheet C1.htm	54171
CRADData\Reports\ExaminerWorksheet C1_formula.xml	1298
CRADData\Reports\ExaminerWorksheet C1_formula2.xml	1729
CRADData\Reports\ExaminerWorksheet C2.htm	45676
CRADData\Reports\ExaminerWorksheet C2_formula.xml	2883
CRADData\Reports\ExaminerWorksheet C3.htm	34367
CRADData\Reports\ExaminerWorksheet C3_formula.xml	872
CRADData\Reports\ExaminerWorksheet D1.htm	33236
CRADData\Reports\ExaminerWorksheet D2.htm	48397
CRADData\Reports\ExaminerWorksheet E1.htm	64201
CRADData\Reports\ExaminerWorksheet E12.htm	62979
CRADData\Reports\ExaminerWorksheet E1_h4pr.htm	68266
CRADData\Reports\ExaminerWorksheet E1_hmz4.htm	70155
CRADData\Reports\ExaminerWorksheet E2.htm	53016
CRADData\Reports\ExaminerWorksheet E22.htm	52988
CRADData\Reports\ExaminerWorksheet E3.htm	63430
CRADData\Reports\ExaminerWorksheet E32.htm	63392
CRADData\Reports\ExaminerWorksheet E4.htm	52355
CRADData\Reports\ExaminerWorksheet E42.htm	52327
CRADData\Reports\ExaminerWorksheet E_formula1.xml	12894
CRADData\Reports\ExaminerWorksheet E_formula1_h4pr.xml	18138
CRADData\Reports\ExaminerWorksheet E_formula1_hmz4.xml	15956
CRADData\Reports\ExaminerWorksheet E_formula2.xml	3000
CRADData\Reports\ExaminerWorksheet E_formula3.xml	14304
CRADData\Reports\ExaminerWorksheet E_formula4.xml	3155
CRADData\Reports\ExaminerWorksheet F.htm	41237

CRADData\Reports\ExaminerWorksheet F1.htm	34539
CRADData\Reports\ExaminerWorksheet F1_formula.xml	1423
CRADData\Reports\ExaminerWorksheet F1_formula2.xml	2674
CRADData\Reports\ExaminerWorksheet F1_hmz4.htm	36798
CRADData\Reports\ExaminerWorksheet F1_hmz4_formula.xml	2125
CRADData\Reports\ExaminerWorksheet F1_hmz4_formula2.xml	2499
CRADData\Reports\ExaminerWorksheet F2.htm	24908
CRADData\Reports\ExaminerWorksheet F2_formula.xml	2686
CRADData\Reports\examinerworksheet f_formula.xml	1237
CRADData\Reports\ExaminerWorksheet F_formula1.xml	1722
CRADData\Reports\ExaminerWorksheet F_formula2.xml	3925
CRADData\Reports\ExaminerWorksheet G.htm	97963
CRADData\Reports\ExaminerWorksheet G1.htm	49736
CRADData\Reports\ExaminerWorksheet G1_formula.xml	5330
CRADData\Reports\ExaminerWorksheet G1_formula1.xml	5048
CRADData\Reports\ExaminerWorksheet G1_formula2.xml	3038
CRADData\Reports\ExaminerWorksheet G1_formula3.xml	3583
CRADData\Reports\ExaminerWorksheet G2.htm	55113
CRADData\Reports\ExaminerWorksheet G2_formula.xml	3608
CRADData\Reports\ExaminerWorksheet G2_formula2.xml	2902
CRADData\Reports\ExaminerWorksheet G3.htm	42365
CRADData\Reports\ExaminerWorksheet G3_formula.xml	4132
CRADData\Reports\ExaminerWorksheet G4.htm	51253
CRADData\Reports\ExaminerWorksheet G4_formula.xml	8219
CRADData\Reports\ExaminerWorksheet G5.htm	56158
CRADData\Reports\ExaminerWorksheet G5_formula.xml	6233
CRADData\Reports\ExaminerWorksheet G5_formula2.xml	1782
CRADData\Reports\ExaminerWorksheet G7.htm	56164
CRADData\Reports\ExaminerWorksheet G7_formula2.xml	1738
CRADData\Reports\ExaminerWorksheet G_formula1.xml	5048
CRADData\Reports\ExaminerWorksheet G_formula2.xml	3038
CRADData\Reports\ExaminerWorksheet G_formula3.xml	3593
CRADData\Reports\ExaminerWorksheet G_h4pr.htm	50063
CRADData\Reports\ExaminerWorksheet G_h4pr_formula.xml	5336
CRADData\Reports\ExaminerWorksheet G_hmz4.htm	50063
CRADData\Reports\ExaminerWorksheet G_hmz4_formula.xml	8114

CRADData\Reports\ExaminerWorksheet H.htm	65492
CRADData\Reports\ExaminerWorksheet H1.htm	75737
CRADData\Reports\ExaminerWorksheet H1_formula.xml	5270
CRADData\Reports\ExaminerWorksheet H2.htm	72402
CRADData\Reports\ExaminerWorksheet H2_formula.xml	5323
CRADData\Reports\ExaminerWorksheet H3.htm	77289
CRADData\Reports\ExaminerWorksheet H3_formula.xml	8223
CRADData\Reports\ExaminerWorksheet H4.htm	78331
CRADData\Reports\ExaminerWorksheet H4_formula.xml	6039
CRADData\Reports\ExaminerWorksheet H_formula.xml	5998
CRADData\Reports\ExaminerWorksheet H_formula2.xml	3632
CRADData\Reports\ExaminerWorksheet H_h4pr.htm	51209
CRADData\Reports\ExaminerWorksheet H_h4pr_formula.xml	4936
CRADData\Reports\ExaminerWorksheet H_hmz4.htm	52621
CRADData\Reports\ExaminerWorksheet H_hmz4_formula.xml	8128
CRADData\Reports\ExaminerWorksheet I1.htm	34012
CRADData\Reports\ExaminerWorksheet I2.htm	41746
CRADData\Reports\ExaminerWorksheet I3.htm	34625
CRADData\Reports\ExaminerWorksheet I4.htm	41670
CRADData\Reports\ExaminerWorksheet I_formula1.xml	1766
CRADData\Reports\ExaminerWorksheet I_formula2.xml	1760
CRADData\Reports\ExaminerWorksheet I_formula3.xml	2340
CRADData\Reports\ExaminerWorksheet I_formula4.xml	1755
CRADData\Reports\ExaminerWorksheet I_formula5.xml	1763
CRADData\Reports\ExaminerWorksheet I_formula6.xml	2333
CRADData\Reports\ExaminerWorksheet I_formula7.xml	1795
CRADData\Reports\ExaminerWorksheet I_formula8.xml	1788
CRADData\Reports\ExaminerWorksheet J_formula1.xml	881
CRADData\Reports\ExaminerWorksheet J_formula2.xml	881
CRADData\Reports\ExaminerWorksheet J_formula3.xml	881
CRADData\Reports\ExaminerWorksheet J_formula4.xml	1455
CRADData\Reports\ExaminerWorksheet J_hmz4_formula1.xml	3201
CRADData\Reports\ExaminerWorksheet J_hmz4_formula2.xml	3201
CRADData\Reports\ExaminerWorksheet J_hmz4_formula3.xml	883
CRADData\Reports\ExaminerWorksheet J_hmz4_formula4.xml	1353
CRADData\Reports\ExaminerWorksheet K.htm	33520



CRADData\Reports\ExaminerWorksheet K1.htm	47026
CRADData\Reports\ExaminerWorksheet L.htm	131142
CRADData\Reports\ExWrkAOption.htm	1480
CRADData\Reports\ExWrkAOptions.html	1080
CRADData\Reports\ExWrkDOption.htm	1338
CRADData\Reports\ExWrkE-2Option.htm	2352
CRADData\Reports\ExWrkE1Option.htm	2465
CRADData\Reports\ExWrkE2Option.htm	1776
CRADData\Reports\ExWrkEOption.htm	1002
CRADData\Reports\ExWrkFOption.htm	2975
CRADData\Reports\ExWrkGOption.htm	2568
CRADData\Reports\ExWrkHOption.htm	1962
CRADData\Reports\ExWrkIOption.htm	1281
CRADData\Reports\ExWrkJOption.htm	1962
CRADData\Reports\ExWrkK1Option.htm	2009
CRADData\Reports\ExWrkKOption.htm	1414
CRADData\Reports\ExWrkOptions.css	1588
CRADData\Reports\fdic_AppIncm_ClassbyTrac1_amt.htm	64634
CRADData\Reports\fdic_AppIncm_ClassbyTrac1_amt_formula.xml	5881
CRADData\Reports\fdic_AppIncm_ClassbyTrac1_cnt.htm	64399
CRADData\Reports\fdic_AppIncm_ClassbyTrac1_cnt_formula.xml	5769
CRADData\Reports\fdic_AppIncm_ClassbyTrac2_amt.htm	63816
CRADData\Reports\fdic_AppIncm_ClassbyTrac2_amt_formula.xml	5419
CRADData\Reports\fdic_AppIncm_ClassbyTrac2_cnt.htm	63647
CRADData\Reports\fdic_AppIncm_ClassbyTrac2_cnt_formula.xml	5167
CRADData\Reports\fdic_Dispersion.htm	21391
CRADData\Reports\fdic_Dispersion_Data.xml	3412
CRADData\Reports\fdic_Dispersion_formula.xml	1948
CRADData\Reports\fdic_Min_Lending_Action_House_amt.htm	28765
CRADData\Reports\fdic_Min_Lending_Action_House_amt_formula.xml	2450
CRADData\Reports\fdic_Min_Lending_Action_House_cnt.htm	29044
CRADData\Reports\fdic_Min_Lending_Action_House_cnt_formula.xml	2435
CRADData\Reports\fdic_Min_Lending_Action_Occu_amt.htm	28484
CRADData\Reports\fdic_Min_Lending_Action_Occu_amt_formula.xml	2422
CRADData\Reports\fdic_Min_Lending_Action_Occu_cnt.htm	29225
CRADData\Reports\fdic_Min_Lending_Action_Occu_cnt_formula.xml	2406

CRADData\Reports\fdic_Min_Lending_Action_Popu_amt.htm	28764
CRADData\Reports\fdic_Min_Lending_Action_Popu_amt_formula.xml	2422
CRADData\Reports\fdic_Min_Lending_Action_Popu_cnt.htm	29043
CRADData\Reports\fdic_Min_Lending_Action_Popu_cnt_formula.xml	2406
CRADData\Reports\fdic_Min_Lending_Action_Rent_amt.htm	28766
CRADData\Reports\fdic_Min_Lending_Action_Rent_amt_formula.xml	2446
CRADData\Reports\fdic_Min_Lending_Action_Rent_cnt.htm	29045
CRADData\Reports\fdic_Min_Lending_Action_Rent_cnt_formula.xml	2431
CRADData\Reports\fdic_Min_Lending_Purpose_House_amt.htm	27942
CRADData\Reports\fdic_Min_Lending_Purpose_House_amt_formula.xml	2052
CRADData\Reports\fdic_Min_Lending_Purpose_House_cnt.htm	27812
CRADData\Reports\fdic_Min_Lending_Purpose_House_cnt_formula.xml	2044
CRADData\Reports\fdic_Min_Lending_Purpose_Occu_amt.htm	27270
CRADData\Reports\fdic_Min_Lending_Purpose_Occu_amt_formula.xml	2015
CRADData\Reports\fdic_Min_Lending_Purpose_Occu_cnt.htm	27305
CRADData\Reports\fdic_Min_Lending_Purpose_Occu_cnt_formula.xml	2010
CRADData\Reports\fdic_Min_Lending_Purpose_Popu_amt.htm	27941
CRADData\Reports\fdic_Min_Lending_Purpose_Popu_amt_formula.xml	2033
CRADData\Reports\fdic_Min_Lending_Purpose_Popu_cnt.htm	27811
CRADData\Reports\fdic_Min_Lending_Purpose_Popu_cnt_formula.xml	2011
CRADData\Reports\fdic_Min_Lending_Purpose_Rent_amt.htm	27943
CRADData\Reports\fdic_Min_Lending_Purpose_Rent_amt_formula.xml	2048
CRADData\Reports\fdic_Min_Lending_Purpose_Rent_cnt.htm	27813
CRADData\Reports\fdic_Min_Lending_Purpose_Rent_cnt_formula.xml	2040
CRADData\Reports\fdic_mrkperf_Action_amt.htm	27625
CRADData\Reports\fdic_mrkperf_Action_amt_formula.xml	2056
CRADData\Reports\fdic_mrkperf_Action_cnt.htm	27661
CRADData\Reports\fdic_mrkperf_Action_cnt_formula.xml	2046
CRADData\Reports\fdic_mrkperf_Applincm_amt.htm	27098
CRADData\Reports\fdic_mrkperf_applincm_amt_formula.xml	2066
CRADData\Reports\fdic_mrkperf_Applincm_cnt.htm	27094
CRADData\Reports\fdic_mrkperf_applincm_cnt_formula.xml	2054
CRADData\Reports\fdic_mrkperf_LoanType_amt.htm	27337
CRADData\Reports\fdic_mrkperf_LoanType_amt_formula.xml	2058
CRADData\Reports\fdic_mrkperf_LoanType_cnt.htm	27390
CRADData\Reports\fdic_mrkperf_LoanType_cnt_formula.xml	2047

CRADData\Reports\fdic_mrkperf_Purpose_amt.htm	26667
CRADData\Reports\fdic_mrkperf_Purpose_amt_formula.xml	2062
CRADData\Reports\fdic_mrkperf_Purpose_cnt.htm	26655
CRADData\Reports\fdic_mrkperf_Purpose_cnt_formula.xml	2050
CRADData\Reports\fdic_mrkperf_Race_amt.htm	29272
CRADData\Reports\fdic_mrkperf_race_amt_formula.xml	2064
CRADData\Reports\fdic_mrkperf_Race_cnt.htm	29192
CRADData\Reports\fdic_mrkperf_race_cnt_formula.xml	2052
CRADData\Reports\fdic_mrkperf_Sex_amt.htm	27836
CRADData\Reports\fdic_mrkperf_sex_amt_formula.xml	1834
CRADData\Reports\fdic_mrkperf_Sex_cnt.htm	27843
CRADData\Reports\fdic_mrkperf_sex_cnt_formula.xml	1822
CRADData\Reports\fdic_mrkperf_Tract_amt.htm	27788
CRADData\Reports\fdic_mrkperf_tract_amt_formula.xml	2062
CRADData\Reports\fdic_mrkperf_Tract_cnt.htm	27441
CRADData\Reports\fdic_mrkperf_tract_cnt_formula.xml	2050
CRADData\Reports\fdic_mrkshare_Action.htm	31322
CRADData\Reports\fdic_mrkshare_Action_formula.xml	1991
CRADData\Reports\fdic_mrkshare_AppInc.htm	30150
CRADData\Reports\fdic_mrkshare_AppInc_formula.xml	2001
CRADData\Reports\fdic_mrkshare_LoanPurp.htm	27193
CRADData\Reports\fdic_mrkshare_LoanPurp_formula.xml	1997
CRADData\Reports\fdic_mrkshare_LoanType.htm	27880
CRADData\Reports\fdic_mrkshare_LoanType_formula.xml	1994
CRADData\Reports\fdic_mrkshare_Race.htm	31716
CRADData\Reports\fdic_mrkshare_Race_formula.xml	2000
CRADData\Reports\fdic_mrkshare_Sex.htm	27259
CRADData\Reports\fdic_mrkshare_Sex_formula.xml	2000
CRADData\Reports\fdic_mrkshare_Tract.htm	27959
CRADData\Reports\fdic_mrkshare_Tract_formula.xml	1998
CRADData\Reports\FFIEC_Table1.htm	1009
CRADData\Reports\FFIEC_Table11_12.htm	1021
CRADData\Reports\FFIEC_Table11_12_a.htm	1023
CRADData\Reports\FFIEC_Table11_12_a_formula.xml	22149
CRADData\Reports\FFIEC_Table11_12_Footer.xml	674
CRADData\Reports\FFIEC_Table11_12_formula.xml	22357

CRADData\Reports\FFIEC_Table11_12_Header.xml	933
CRADData\Reports\FFIEC_Table13.htm	1009
CRADData\Reports\FFIEC_Table13_Footer.xml	541
CRADData\Reports\FFIEC_Table13_formula.xml	21963
CRADData\Reports\FFIEC_Table13_Header.xml	832
CRADData\Reports\FFIEC_Table14.htm	1009
CRADData\Reports\FFIEC_Table14_Footer.xml	540
CRADData\Reports\FFIEC_Table14_formula.xml	17376
CRADData\Reports\FFIEC_Table14_Header.xml	832
CRADData\Reports\FFIEC_Table15.htm	1009
CRADData\Reports\FFIEC_Table15_Footer.xml	540
CRADData\Reports\FFIEC_Table15_formula.xml	22185
CRADData\Reports\FFIEC_Table15_Header.xml	832
CRADData\Reports\FFIEC_Table16.htm	1009
CRADData\Reports\FFIEC_Table16_Footer.xml	575
CRADData\Reports\FFIEC_Table16_formula.xml	20914
CRADData\Reports\FFIEC_Table16_Header.xml	988
CRADData\Reports\FFIEC_Table17.htm	1009
CRADData\Reports\FFIEC_Table17_Footer.xml	538
CRADData\Reports\FFIEC_Table17_formula.xml	22047
CRADData\Reports\FFIEC_Table17_Header.xml	833
CRADData\Reports\FFIEC_Table1a.htm	1010
CRADData\Reports\FFIEC_Table1a_1.htm	1012
CRADData\Reports\FFIEC_Table1a_1_Footer.xml	518
CRADData\Reports\FFIEC_Table1a_1_formula.xml	14998
CRADData\Reports\FFIEC_Table1a_1_Header.xml	809
CRADData\Reports\FFIEC_Table1a_Footer.xml	518
CRADData\Reports\FFIEC_Table1a_formula.xml	21148
CRADData\Reports\FFIEC_Table1a_Header.xml	810
CRADData\Reports\FFIEC_Table1_Footer.xml	541
CRADData\Reports\FFIEC_Table1_formula.xml	20101
CRADData\Reports\FFIEC_Table1_Header.xml	832
CRADData\Reports\FFIEC_Table2_5.htm	1017
CRADData\Reports\FFIEC_Table2_5_a.htm	1019
CRADData\Reports\FFIEC_Table2_5_a_formula.xml	23660
CRADData\Reports\FFIEC_Table2_5_Footer.xml	637

CRADData\Reports\FFIEC_Table2_5_formula.xml	23691
CRADData\Reports\FFIEC_Table2_5_Header.xml	903
CRADData\Reports\FFIEC_Table6_7.htm	1017
CRADData\Reports\FFIEC_Table6_7_a.htm	1019
CRADData\Reports\FFIEC_Table6_7_a_formula.xml	22281
CRADData\Reports\FFIEC_Table6_7_Footer.xml	616
CRADData\Reports\FFIEC_Table6_7_formula.xml	22733
CRADData\Reports\FFIEC_Table6_7_Header.xml	907
CRADData\Reports\FFIEC_Table8_10.htm	1021
CRADData\Reports\FFIEC_Table8_10_a.htm	1023
CRADData\Reports\FFIEC_Table8_10_a_formula.xml	22914
CRADData\Reports\FFIEC_Table8_10_Footer.xml	664
CRADData\Reports\FFIEC_Table8_10_formula.xml	22669
CRADData\Reports\FFIEC_Table8_10_Header.xml	903
CRADData\Reports\File2.js	77801
CRADData\Reports\genMove.js	2584
CRADData\Reports\GeoCode_Statistics_formula1.xml	1223
CRADData\Reports\GeoCode_Statistics_formula2.xml	535
CRADData\Reports\GeoCode_Statistics_formula3.xml	1056
CRADData\Reports\geo_except.htm	964
CRADData\Reports\geo_except_Footer.xml	199
CRADData\Reports\geo_except_formula.xml	17012
CRADData\Reports\geo_except_Header.xml	749
CRADData\Reports\geo_stat.htm	35995
CRADData\Reports\HistoryAnalysisOption.htm	4358
CRADData\Reports\HMDA_Pricing_Analysis_cnt.htm	54805
CRADData\Reports\HMDA_Pricing_Analysis_cnt_formula.xml	5379
CRADData\Reports\h_detail.htm	956
CRADData\Reports\h_detail_Footer.xml	162
CRADData\Reports\h_detail_formula.xml	17595
CRADData\Reports\h_detail_Header.xml	1220
CRADData\Reports\H_Disc_1.htm	966
CRADData\Reports\H_Disc_1.xml	2000
CRADData\Reports\H_Disc_11a_hmz4_amt.htm	60637
CRADData\Reports\H_Disc_11a_hmz4_amt_formula.xml	5335
CRADData\Reports\H_Disc_11a_hmz4_cnt.htm	60636

CRADData\Reports\H_Disc_11a_hmz4_cnt_formula.xml	5335
CRADData\Reports\H_Disc_11b_hmz4_amt.htm	59439
CRADData\Reports\H_Disc_11b_hmz4_amt_formula.xml	5346
CRADData\Reports\H_Disc_11b_hmz4_cnt.htm	59438
CRADData\Reports\H_Disc_11b_hmz4_cnt_formula.xml	5346
CRADData\Reports\H_Disc_12a_hmz4_amt.htm	53181
CRADData\Reports\H_Disc_12a_hmz4_amt_formula.xml	5642
CRADData\Reports\H_Disc_12a_hmz4_cnt.htm	53180
CRADData\Reports\H_Disc_12a_hmz4_cnt_formula.xml	5642
CRADData\Reports\H_Disc_12b_hmz4_amt.htm	60767
CRADData\Reports\H_Disc_12b_hmz4_amt_formula.xml	5289
CRADData\Reports\H_Disc_12b_hmz4_cnt.htm	60764
CRADData\Reports\H_Disc_12b_hmz4_cnt_formula.xml	5289
CRADData\Reports\H_Disc_1_Footer.xml	224
CRADData\Reports\H_Disc_1_formula.xml	25781
CRADData\Reports\H_Disc_1_Header.xml	624
CRADData\Reports\H_Disc_1_hmz4.htm	981
CRADData\Reports\H_Disc_1_hmz4_Footer.xml	220
CRADData\Reports\H_Disc_1_hmz4_Formula.xml	27072
CRADData\Reports\H_Disc_1_hmz4_Header.xml	674
CRADData\Reports\H_Disc_1_Tract.htm	1004
CRADData\Reports\H_Disc_1_Tract_Footer.xml	199
CRADData\Reports\H_Disc_1_Tract_formula.xml	28483
CRADData\Reports\H_Disc_1_Tract_Header.xml	684
CRADData\Reports\H_Disc_2.htm	964
CRADData\Reports\H_Disc_2.xml	17802
CRADData\Reports\H_Disc_2_Footer.xml	276
CRADData\Reports\H_Disc_2_formula.xml	25604
CRADData\Reports\H_Disc_2_Header.xml	588
CRADData\Reports\H_Disc_2_hmz4.htm	979
CRADData\Reports\H_Disc_2_hmz4_Footer.xml	272
CRADData\Reports\H_Disc_2_hmz4_Formula.xml	27020
CRADData\Reports\H_Disc_2_hmz4_Header.xml	723
CRADData\Reports\H_Disc_3.htm	966
CRADData\Reports\H_Disc_3.xml	13933
CRADData\Reports\H_Disc_32_hmz4.htm	41610

CRADData\Reports\H_Disc_32_hmz4_Formula.xml	5152
CRADData\Reports\H_Disc_3_Footer.xml	276
CRADData\Reports\H_Disc_3_formula.xml	31792
CRADData\Reports\H_Disc_3_Header.xml	598
CRADData\Reports\H_Disc_3_hmz4.htm	981
CRADData\Reports\H_Disc_3_hmz4_Footer.xml	272
CRADData\Reports\H_Disc_3_hmz4_formula.xml	35222
CRADData\Reports\H_Disc_3_hmz4_Header.xml	775
CRADData\Reports\H_Disc_4.htm	962
CRADData\Reports\H_Disc_4.xml	12184
CRADData\Reports\H_Disc_4_Footer.xml	276
CRADData\Reports\H_Disc_4_formula.xml	27691
CRADData\Reports\H_Disc_4_Header.xml	665
CRADData\Reports\H_Disc_4_hmz4.htm	977
CRADData\Reports\H_Disc_4_hmz4_Footer.xml	272
CRADData\Reports\H_Disc_4_hmz4_formula.xml	27714
CRADData\Reports\H_Disc_4_hmz4_Header.xml	735
CRADData\Reports\H_Disc_5.htm	964
CRADData\Reports\H_Disc_5.xml	10870
CRADData\Reports\H_Disc_5_Footer.xml	276
CRADData\Reports\H_Disc_5_formula.xml	26057
CRADData\Reports\H_Disc_5_Header.xml	667
CRADData\Reports\H_Disc_5_hmz4.htm	979
CRADData\Reports\H_Disc_5_hmz4_Footer.xml	272
CRADData\Reports\H_Disc_5_hmz4_formula.xml	26513
CRADData\Reports\H_Disc_5_hmz4_Header.xml	748
CRADData\Reports\H_Disc_6.htm	964
CRADData\Reports\H_Disc_6.xml	6060
CRADData\Reports\H_Disc_6_Footer.xml	276
CRADData\Reports\H_Disc_6_formula.xml	26069
CRADData\Reports\H_Disc_6_Header.xml	646
CRADData\Reports\H_Disc_7.htm	966
CRADData\Reports\H_Disc_7.xml	13488
CRADData\Reports\H_Disc_7_Footer.xml	276
CRADData\Reports\H_Disc_7_formula.xml	33317
CRADData\Reports\H_Disc_7_Header.xml	669

CRADData\Reports\H_Disc_7_hmz4.htm	981
CRADData\Reports\H_Disc_7_hmz4_Footer.xml	272
CRADData\Reports\H_Disc_7_hmz4_formula.xml	33317
CRADData\Reports\H_Disc_7_hmz4_Header.xml	754
CRADData\Reports\H_Disc_8.htm	962
CRADData\Reports\H_Disc_8.xml	9487
CRADData\Reports\H_Disc_8_Footer.xml	276
CRADData\Reports\H_Disc_8_Formula.xml	36385
CRADData\Reports\H_Disc_8_Header.xml	657
CRADData\Reports\H_Disc_8_hmz4.htm	977
CRADData\Reports\H_Disc_8_hmz4_Footer.xml	272
CRADData\Reports\H_Disc_8_hmz4_Formula.xml	36465
CRADData\Reports\H_Disc_8_hmz4_Header.xml	777
CRADData\Reports\H_IRS_2004.htm	964
CRADData\Reports\H_IRS_2004_Footer.xml	162
CRADData\Reports\H_IRS_2004_formula.xml	19899
CRADData\Reports\H_IRS_2004_Header.xml	1220
CRADData\Reports\H_Lar.htm	951
CRADData\Reports\H_Lar_Footer.xml	161
CRADData\Reports\H_Lar_Formula.xml	32793
CRADData\Reports\H_Lar_Header.xml	923
CRADData\Reports\H_Lar_Report.htm	972
CRADData\Reports\H_Lar_Report_Footer.xml	157
CRADData\Reports\H_Lar_Report_Formula.xml	35322
CRADData\Reports\H_Lar_Report_Header.xml	496
CRADData\Reports\h_lar_report_hmz4.htm	994
CRADData\Reports\H_Lar_Report_hmz4_Footer.xml	157
CRADData\Reports\h_lar_report_hmz4_formula.xml	34344
CRADData\Reports\H_Lar_Report_hmz4_Header.xml	496
CRADData\Reports\h_trans.htm	952
CRADData\Reports\H_TRANS_2004.htm	972
CRADData\Reports\H_TRANS_2004_Footer.xml	134
CRADData\Reports\H_TRANS_2004_formula.xml	23307
CRADData\Reports\H_TRANS_2004_Header.xml	1223
CRADData\Reports\h_trans_Footer.xml	134
CRADData\Reports\h_trans_formula.xml	23066



CRADData\Reports\h_trans_Header.xml	1223
CRADData\Reports\Incl_pur_Option.htm	2996
CRADData\Reports\Index.htm	105487
CRADData\Reports\lar_register.htm	972
CRADData\Reports\lar_register_Footer.xml	157
CRADData\Reports\lar_register_formula.xml	20466
CRADData\Reports\lar_register_Header.xml	495
CRADData\Reports\LoanApplicationRegisterOption.htm	1188
CRADData\Reports\LowDpstTract_Lending.htm	1010
CRADData\Reports\LowDpstTract_Lending_Footer.xml	251
CRADData\Reports\LowDpstTract_Lending_formula.xml	23106
CRADData\Reports\LowDpstTract_Lending_Header.xml	827
CRADData\Reports\LowIncmTrac_Lending.htm	1006
CRADData\Reports\LowIncmTrac_Lending_Footer.xml	251
CRADData\Reports\LowIncmTrac_Lending_formula.xml	23138
CRADData\Reports\LowIncmTrac_Lending_Header.xml	840
CRADData\Reports\LowModAppIncm_Lending1.htm	57502
CRADData\Reports\LowModAppIncm_Lending1_formula.xml	642
CRADData\Reports\LowModAppIncm_Lending1_formula2.xml	909
CRADData\Reports\LowModAppIncm_Lending2.htm	55033
CRADData\Reports\LowModAppIncm_Lending2_formula.xml	640
CRADData\Reports\LowModAppIncm_Lending2_formula2.xml	910
CRADData\Reports\LowModAppIncm_Lending3.htm	54397
CRADData\Reports\LowModAppIncm_Lending3_formula.xml	649
CRADData\Reports\LowModAppIncm_Lending3_formula2.xml	917
CRADData\Reports\LowModDpstTract_Lending.htm	1022
CRADData\Reports\LowModDpstTract_Lending_Footer.xml	251
CRADData\Reports\LowModDpstTract_Lending_formula.xml	23219
CRADData\Reports\LowModDpstTract_Lending_Header.xml	871
CRADData\Reports\LowModIncmTrac_Lending.htm	1018
CRADData\Reports\LowModIncmTrac_Lending1.htm	46294
CRADData\Reports\LowModIncmTrac_Lending1_formula.xml	640
CRADData\Reports\LowModIncmTrac_Lending1_formula2.xml	912
CRADData\Reports\LowModIncmTrac_Lending2.htm	44829
CRADData\Reports\LowModIncmTrac_Lending2_formula.xml	640
CRADData\Reports\LowModIncmTrac_Lending2_formula2.xml	912

CRADData\Reports\LowModIncmTrac_Lending3.htm	45286
CRADData\Reports\LowModIncmTrac_Lending3_formula.xml	651
CRADData\Reports\LowModIncmTrac_Lending3_formula2.xml	918
CRADData\Reports\LowModIncmTrac_Lending_Footer.xml	251
CRADData\Reports\LowModIncmTrac_Lending_formula.xml	23248
CRADData\Reports\LowModIncmTrac_Lending_Header.xml	854
CRADData\Reports\LowModTract_Lending.htm	1006
CRADData\Reports\LowModTract_Lending_Footer.xml	251
CRADData\Reports\LowModTract_Lending_formula.xml	23349
CRADData\Reports\LowModTract_Lending_Header.xml	854
CRADData\Reports\LowTract_Lending.htm	994
CRADData\Reports\LowTract_Lending_Footer.xml	251
CRADData\Reports\LowTract_Lending_formula.xml	23207
CRADData\Reports\LowTract_Lending_Header.xml	842
CRADData\Reports\MainModule.js	98815
CRADData\Reports\MICRO_IRS.htm	960
CRADData\Reports\MICRO_IRS_Footer.xml	167
CRADData\Reports\MICRO_IRS_formula.xml	27569
CRADData\Reports\MICRO_IRS_Header.xml	1217
CRADData\Reports\MidTract_Lending.htm	992
CRADData\Reports\MidTract_Lending_Footer.xml	247
CRADData\Reports\MidTract_Lending_formula.xml	24079
CRADData\Reports\MidTract_Lending_Header.xml	814
CRADData\Reports\MidUpprTract_Lending.htm	1012
CRADData\Reports\MidUpprTract_Lending_Footer.xml	247
CRADData\Reports\MidUpprTract_Lending_formula.xml	24215
CRADData\Reports\MidUpprTract_Lending_Header.xml	826
CRADData\Reports\mid_upr_tr_test_1.htm	26623
CRADData\Reports\mid_upr_tr_test_2.htm	26728
CRADData\Reports\mid_upr_tr_test_3.htm	26320
CRADData\Reports\Mint_Tract_Lending_Test.htm	60997
CRADData\Reports\Mint_Tract_Lending_Test_formula.xml	648
CRADData\Reports\Mint_Tract_Lending_Test_formula2.xml	914
CRADData\Reports\Mkt_Shr_County.htm	1010
CRADData\Reports\Mkt_Shr_County_Footer.xml	224
CRADData\Reports\Mkt_Shr_County_formula.xml	18446

CRADData\Reports\Mkt_Shr_County_Header.xml	573
CRADData\Reports\Mkt_Shr_County_Page_Break.htm	1054
CRADData\Reports\Mkt_Shr_County_Page_Break_Footer.xml	220
CRADData\Reports\Mkt_Shr_County_Page_Break_formula.xml	18523
CRADData\Reports\Mkt_Shr_County_Page_Break_Header.xml	580
CRADData\Reports\Mkt_Shr_Lender.htm	1010
CRADData\Reports\Mkt_Shr_Lender_Footer.xml	245
CRADData\Reports\Mkt_Shr_Lender_formula.xml	16627
CRADData\Reports\Mkt_Shr_Lender_Header.xml	573
CRADData\Reports\Mkt_Shr_MSA.htm	998
CRADData\Reports\Mkt_Shr_MSA_Footer.xml	220
CRADData\Reports\Mkt_Shr_MSA_formula.xml	17806
CRADData\Reports\Mkt_Shr_MSA_Header.xml	567
CRADData\Reports\Mkt_Shr_MSA_Page_Break.htm	1042
CRADData\Reports\Mkt_Shr_MSA_Page_Break_Footer.xml	224
CRADData\Reports\Mkt_Shr_MSA_Page_Break_formula.xml	18709
CRADData\Reports\Mkt_Shr_MSA_Page_Break_Header.xml	580
CRADData\Reports\Mkt_Shr_Perf.htm	992
CRADData\Reports\Mkt_Shr_Perf.xml	7367
CRADData\Reports\Mkt_Shr_Perf_Footer.xml	224
CRADData\Reports\Mkt_Shr_Perf_formula.xml	29598
CRADData\Reports\Mkt_Shr_Perf_h4pr.htm	1007
CRADData\Reports\Mkt_Shr_Perf_h4pr_Footer.xml	224
CRADData\Reports\Mkt_Shr_Perf_h4pr_formula.xml	29651
CRADData\Reports\Mkt_Shr_Perf_h4pr_Header.xml	749
CRADData\Reports\Mkt_Shr_Perf_Header.xml	749
CRADData\Reports\Mkt_Shr_Tract.htm	1006
CRADData\Reports\Mkt_Shr_Tract_Footer.xml	220
CRADData\Reports\Mkt_Shr_Tract_formula.xml	18516
CRADData\Reports\Mkt_Shr_Tract_Header.xml	571
CRADData\Reports\Mkt_Shr_Tract_Page_Break.htm	1050
CRADData\Reports\Mkt_Shr_Tract_Page_Break_Footer.xml	224
CRADData\Reports\Mkt_Shr_Tract_Page_Break_formula.xml	18814
CRADData\Reports\Mkt_Shr_Tract_Page_Break_Header.xml	580
CRADData\Reports\MnrtyDpstTract_Lending.htm	1018
CRADData\Reports\MnrtyDpstTract_Lending_Footer.xml	251

CRADData\Reports\MnrtyDpstTract_Lending_formula.xml	22973
CRADData\Reports\MnrtyDpstTract_Lending_Header.xml	774
CRADData\Reports\MnrtyTract_Lending.htm	1002
CRADData\Reports\MnrtyTract_Lending_Footer.xml	251
CRADData\Reports\MnrtyTract_Lending_formula.xml	22718
CRADData\Reports\MnrtyTract_Lending_Header.xml	843
CRADData\Reports\ModDpstTract_Lending.htm	1010
CRADData\Reports\ModDpstTract_Lending_Footer.xml	251
CRADData\Reports\ModDpstTract_Lending_formula.xml	23159
CRADData\Reports\ModDpstTract_Lending_Header.xml	863
CRADData\Reports\ModIncmTrac_Lending.htm	1006
CRADData\Reports\ModIncmTrac_Lending_Footer.xml	251
CRADData\Reports\ModIncmTrac_Lending_formula.xml	23173
CRADData\Reports\ModIncmTrac_Lending_Header.xml	845
CRADData\Reports\ModTract_Lending.htm	994
CRADData\Reports\ModTract_Lending_Footer.xml	251
CRADData\Reports\ModTract_Lending_formula.xml	22997
CRADData\Reports\ModTract_Lending_Header.xml	802
CRADData\Reports\occ_bookmark.xml	361
CRADData\Reports\occ_tbl.xml	18091
CRADData\Reports\options.css	753
CRADData\Reports\options.htm	3748
CRADData\Reports\options.xml	587
CRADData\Reports\OPT_County_Market_Share.htm	9488
CRADData\Reports\OPT_Denial_Justification_analysis.htm	6436
CRADData\Reports\OPT_Disclosure.htm	7232
CRADData\Reports\OPT_Disclosure_H4PR_11A.htm	8084
CRADData\Reports\OPT_Disclosure_H4PR_11B.htm	4928
CRADData\Reports\OPT_Disclosure_HMZ4.htm	8203
CRADData\Reports\OPT_FDIC_Mnrty_Lender.htm	4100
CRADData\Reports\OPT_h_lar.htm	4279
CRADData\Reports\OPT_Lender_Market_Share.htm	8698
CRADData\Reports\OPT_Low_and_Mod_Applicant_Income_Lending_Test.htm	5329
CRADData\Reports\OPT_Low_and_Mod_Tract_Income_Lending_Test2.htm	5329
CRADData\Reports\OPT_Minority_Tract_Lending_Test.htm	5403
CRADData\Reports\OPT_Minotity_Lending_Test.htm	3130

CRADData\Reports\OPT_MSA_Market_Share.htm	8951
CRADData\Reports\Opt_Summary_Action_Demog.htm	3023
CRADData\Reports\OPT_Tract_Market_Share.htm	8951
CRADData\Reports\Oth_Summary_Action_amt.htm	61566
CRADData\Reports\Oth_Summary_Action_amt_formula.xml	9457
CRADData\Reports\Oth_Summary_Action_cnt.htm	62755
CRADData\Reports\Oth_Summary_Action_cnt_amt.htm	64177
CRADData\Reports\Oth_Summary_Action_cnt_amt_formula.xml	7448
CRADData\Reports\Oth_Summary_Action_cnt_formula.xml	8170
CRADData\Reports\Oth_Summary_Action_Data.xml	84197
CRADData\Reports\Oth_Summary_App_Inc_amt.htm	61145
CRADData\Reports\Oth_Summary_App_Inc_amt_formula.xml	7944
CRADData\Reports\Oth_Summary_App_Inc_cnt.htm	62199
CRADData\Reports\Oth_Summary_App_Inc_cnt_formula.xml	7805
CRADData\Reports\Oth_Summary_App_Inc_Data.xml	56293
CRADData\Reports\Oth_Summary_App_Race_amt.htm	59435
CRADData\Reports\Oth_Summary_App_Race_amt_formula.xml	7944
CRADData\Reports\Oth_Summary_App_Race_cnt.htm	84277
CRADData\Reports\Oth_Summary_App_Race_cnt_formula.xml	7816
CRADData\Reports\Oth_Summary_App_Race_Data.xml	78730
CRADData\Reports\Oth_Summary_Purp_Type_amt.htm	62665
CRADData\Reports\Oth_Summary_Purp_Type_amt_formula.xml	7906
CRADData\Reports\Oth_Summary_Purp_Type_cnt.htm	65476
CRADData\Reports\Oth_Summary_Purp_Type_cnt_formula.xml	7876
CRADData\Reports\Oth_Summary_Purp_Type_Data.xml	59073
CRADData\Reports\Oth_Summary_Tr_Inc_amt.htm	62532
CRADData\Reports\Oth_Summary_Tr_Inc_amt_formula.xml	7868
CRADData\Reports\Oth_Summary_Tr_Inc_cnt.htm	62688
CRADData\Reports\Oth_Summary_Tr_Inc_cnt_formula.xml	7797
CRADData\Reports\Oth_Summary_Tr_Inc_Data.xml	56115
CRADData\Reports\Overall_Geocoding_Accuracy_Report.htm	30739
CRADData\Reports\Overall_Geocoding_Accuracy_Report_formula1.xml	137
CRADData\Reports\Overall_Geocoding_Accuracy_Report_formula2.xml	194
CRADData\Reports\Overall_Geocoding_Accuracy_Report_formula3.xml	356
CRADData\Reports\Overall_Geocoding_Accuracy_Report_formula4.xml	273
CRADData\Reports\Overall_Geocoding_Accuracy_Report_formula5.xml	651

CRADData\Reports\Peer_Pricing.htm	978
CRADData\Reports\Peer_Pricing_Appl_Incm.htm	1008
CRADData\Reports\Peer_Pricing_Appl_Incm_Footer.xml	247
CRADData\Reports\Peer_Pricing_Appl_Incm_formula.xml	27280
CRADData\Reports\Peer_Pricing_Appl_Incm_Header.xml	880
CRADData\Reports\Peer_Pricing_Ethnicity.htm	1008
CRADData\Reports\Peer_Pricing_Ethnicity_Footer.xml	247
CRADData\Reports\Peer_Pricing_Ethnicity_formula.xml	27272
CRADData\Reports\Peer_Pricing_Ethnicity_Header.xml	880
CRADData\Reports\Peer_Pricing_Footer.xml	247
CRADData\Reports\Peer_Pricing_formula.xml	27272
CRADData\Reports\Peer_Pricing_Gender.htm	999
CRADData\Reports\Peer_Pricing_Gender_Footer.xml	247
CRADData\Reports\Peer_Pricing_Gender_formula.xml	27257
CRADData\Reports\Peer_Pricing_Gender_Header.xml	880
CRADData\Reports\Peer_Pricing_Header.xml	880
CRADData\Reports\Peer_Pricing_High_Mnrty.htm	1011
CRADData\Reports\Peer_Pricing_High_Mnrty_Footer.xml	247
CRADData\Reports\Peer_Pricing_High_Mnrty_formula.xml	27220
CRADData\Reports\Peer_Pricing_High_Mnrty_Header.xml	880
CRADData\Reports\Peer_Pricing_Mnrty_Appl.htm	1011
CRADData\Reports\Peer_Pricing_Mnrty_Appl_Footer.xml	247
CRADData\Reports\Peer_Pricing_Mnrty_Appl_formula.xml	27311
CRADData\Reports\Peer_Pricing_Mnrty_Appl_Header.xml	880
CRADData\Reports\Peer_Pricing_Race.htm	993
CRADData\Reports\Peer_Pricing_Race_Footer.xml	247
CRADData\Reports\Peer_Pricing_Race_formula.xml	27254
CRADData\Reports\Peer_Pricing_Race_Header.xml	880
CRADData\Reports\Peer_Pricing_Trct_Incm.htm	1008
CRADData\Reports\Peer_Pricing_Trct_Incm_Footer.xml	247
CRADData\Reports\Peer_Pricing_Trct_Incm_formula.xml	27278
CRADData\Reports\Peer_Pricing_Trct_Incm_Header.xml	880
CRADData\Reports\PH_Lar_Report.htm	976
CRADData\Reports\PH_Lar_Report_Footer.xml	161
CRADData\Reports\PH_Lar_Report_Formula.xml	35111
CRADData\Reports\PH_Lar_Report_Header.xml	496

CRADData\Reports\PricingByApplIncm2_Amt.htm	31048
CRADData\Reports\PricingByApplIncm2_Amt_Col.htm	31057
CRADData\Reports\PricingByApplIncm2_amt_Col_formula.xml	2120
CRADData\Reports\PricingByApplIncm2_Amt_formula.xml	1692
CRADData\Reports\PricingByApplIncm2_Amt_Row.htm	31057
CRADData\Reports\PricingByApplIncm2_amt_Row_formula.xml	2120
CRADData\Reports\PricingByApplIncm2_Cnt.htm	31047
CRADData\Reports\PricingByApplIncm2_Cnt_Col.htm	31056
CRADData\Reports\PricingByApplIncm2_cnt_Col_formula.xml	2120
CRADData\Reports\PricingByApplIncm2_cnt_formula.xml	1692
CRADData\Reports\PricingByApplIncm2_Cnt_Row.htm	31056
CRADData\Reports\PricingByApplIncm2_cnt_Row_formula.xml	2120
CRADData\Reports\PricingByApplIncm_Amt.htm	46042
CRADData\Reports\PricingByApplIncm_Amt_Col.htm	46060
CRADData\Reports\PricingByApplIncm_amt_Col_formula.xml	2120
CRADData\Reports\PricingByApplIncm_Amt_formula.xml	1781
CRADData\Reports\PricingByApplIncm_Amt_Row.htm	46057
CRADData\Reports\PricingByApplIncm_amt_Row_formula.xml	2120
CRADData\Reports\PricingByApplIncm_Cnt.htm	46041
CRADData\Reports\PricingByApplIncm_Cnt_Col.htm	46059
CRADData\Reports\PricingByApplIncm_cnt_Col_formula.xml	2120
CRADData\Reports\PricingByApplIncm_cnt_formula.xml	1781
CRADData\Reports\PricingByApplIncm_Cnt_Row.htm	46056
CRADData\Reports\PricingByApplIncm_cnt_Row_formula.xml	2120
CRADData\Reports\PricingByCensusTract2_Amt.htm	36462
CRADData\Reports\PricingByCensusTract2_Amt_Col.htm	36471
CRADData\Reports\PricingByCensusTract2_amt_Col_formula.xml	2912
CRADData\Reports\PricingByCensusTract2_amt_formula.xml	2270
CRADData\Reports\PricingByCensusTract2_Amt_Row.htm	36471
CRADData\Reports\PricingByCensusTract2_amt_Row_formula.xml	2912
CRADData\Reports\PricingByCensusTract2_Cnt.htm	36461
CRADData\Reports\PricingByCensusTract2_Cnt_Col.htm	36470
CRADData\Reports\PricingByCensusTract2_cnt_Col_formula.xml	2912
CRADData\Reports\PricingByCensusTract2_cnt_formula.xml	2267
CRADData\Reports\PricingByCensusTract2_Cnt_Row.htm	36470
CRADData\Reports\PricingByCensusTract2_cnt_Row_formula.xml	2912

CRADData\Reports\PricingByCensusTract_Amt.htm	36953
CRADData\Reports\PricingByCensusTract_Amt_Col.htm	36962
CRADData\Reports\PricingByCensusTract_amt_Col_formula.xml	2912
CRADData\Reports\PricingByCensusTract_amt_formula.xml	2267
CRADData\Reports\PricingByCensusTract_Amt_Row.htm	36962
CRADData\Reports\PricingByCensusTract_amt_Row_formula.xml	2912
CRADData\Reports\PricingByCensusTract_Cnt.htm	36952
CRADData\Reports\PricingByCensusTract_Cnt_Col.htm	36961
CRADData\Reports\PricingByCensusTract_cnt_Col_formula.xml	2912
CRADData\Reports\PricingByCensusTract_cnt_formula.xml	2370
CRADData\Reports\PricingByCensusTract_Cnt_Row.htm	36961
CRADData\Reports\PricingByCensusTract_cnt_Row_formula.xml	2912
CRADData\Reports\PricingRaceEth2_Amt.htm	38670
CRADData\Reports\PricingRaceEth2_Amt_Col.htm	38679
CRADData\Reports\PricingRaceEth2_amt_Col_formula.xml	3704
CRADData\Reports\PricingRaceEth2_amt_formula.xml	2848
CRADData\Reports\PricingRaceEth2_Amt_Row.htm	38674
CRADData\Reports\PricingRaceEth2_amt_Row_formula.xml	3704
CRADData\Reports\PricingRaceEth2_Cnt.htm	38669
CRADData\Reports\PricingRaceEth2_Cnt_Col.htm	38678
CRADData\Reports\PricingRaceEth2_cnt_Col_formula.xml	3704
CRADData\Reports\PricingRaceEth2_cnt_formula.xml	2848
CRADData\Reports\PricingRaceEth2_Cnt_Row.htm	38678
CRADData\Reports\PricingRaceEth2_cnt_Row_formula.xml	3704
CRADData\Reports\PricingRaceEth_Amt.htm	40008
CRADData\Reports\PricingRaceEth_Amt_Col.htm	40017
CRADData\Reports\PricingRaceEth_amt_Col_formula.xml	3704
CRADData\Reports\PricingRaceEth_amt_formula.xml	2844
CRADData\Reports\PricingRaceEth_Amt_Row.htm	40017
CRADData\Reports\PricingRaceEth_amt_Row_formula.xml	3704
CRADData\Reports\PricingRaceEth_Cnt.htm	40007
CRADData\Reports\PricingRaceEth_Cnt_Col.htm	40012
CRADData\Reports\PricingRaceEth_cnt_Col_formula.xml	3704
CRADData\Reports\PricingRaceEth_cnt_formula.xml	2937
CRADData\Reports\PricingRaceEth_Cnt_Row.htm	40012
CRADData\Reports\PricingRaceEth_cnt_Row_formula.xml	3704



CRADData\Reports\Pricing_Analysis_cnt.htm	53945
CRADData\Reports\Pricing_Analysis_cnt_formula.xml	4536
CRADData\Reports\Pricing_Summary2_amt.htm	59939
CRADData\Reports\Pricing_Summary2_amt_Col.htm	59948
CRADData\Reports\Pricing_Summary2_amt_Col_formula.xml	7009
CRADData\Reports\Pricing_Summary2_amt_formula.xml	5300
CRADData\Reports\Pricing_Summary2_amt_Row.htm	59948
CRADData\Reports\Pricing_Summary2_amt_Row_formula.xml	7009
CRADData\Reports\Pricing_Summary2_cnt.htm	60817
CRADData\Reports\Pricing_Summary2_cnt_Col.htm	59947
CRADData\Reports\Pricing_Summary2_cnt_Col_formula.xml	7010
CRADData\Reports\Pricing_Summary2_cnt_formula.xml	5300
CRADData\Reports\Pricing_Summary2_cnt_Row.htm	59947
CRADData\Reports\Pricing_Summary2_cnt_Row_formula.xml	7009
CRADData\Reports\Pricing_Summary_amt.htm	61505
CRADData\Reports\Pricing_Summary_amt_Col.htm	61514
CRADData\Reports\Pricing_Summary_amt_Col_formula.xml	7009
CRADData\Reports\Pricing_Summary_amt_formula.xml	4814
CRADData\Reports\Pricing_Summary_amt_Row.htm	61514
CRADData\Reports\Pricing_Summary_amt_Row_formula.xml	7009
CRADData\Reports\Pricing_Summary_cnt.htm	61794
CRADData\Reports\Pricing_Summary_cnt_Col.htm	61513
CRADData\Reports\Pricing_Summary_cnt_Col_formula.xml	7010
CRADData\Reports\Pricing_Summary_cnt_formula.xml	4793
CRADData\Reports\Pricing_Summary_cnt_Row.htm	61513
CRADData\Reports\Pricing_Summary_cnt_Row_formula.xml	7009
CRADData\Reports\printing.htm	14453
CRADData\Reports\PurpLienByActionLoanType_amt.htm	38575
CRADData\Reports\PurpLienByActionLoanType_amt_Col.htm	38591
CRADData\Reports\PurpLienByActionLoanType_amt_Col_formula.xml	4512
CRADData\Reports\PurpLienByActionLoanType_amt_formula.xml	3690
CRADData\Reports\PurpLienByActionLoanType_amt_Grand.htm	38594
CRADData\Reports\PurpLienByActionLoanType_amt_Grand_formula.xml	4456
CRADData\Reports\PurpLienByActionLoanType_amt_Row.htm	38590
CRADData\Reports\PurpLienByActionLoanType_amt_Row_formula.xml	4512
CRADData\Reports\PurpLienByActionLoanType_cnt.htm	38574

CRADData\Reports\PurpLienByActionLoanType_cnt_Col.htm	38592
CRADData\Reports\PurpLienByActionLoanType_cnt_Col_formula.xml	4512
CRADData\Reports\PurpLienByActionLoanType_cnt_formula.xml	3690
CRADData\Reports\PurpLienByActionLoanType_cnt_Grand.htm	38591
CRADData\Reports\PurpLienByActionLoanType_cnt_Grand_formula.xml	4456
CRADData\Reports\PurpLienByActionLoanType_cnt_Row.htm	38589
CRADData\Reports\PurpLienByActionLoanType_cnt_Row_formula.xml	4512
CRADData\Reports\PurpLienByApplincm_amt.htm	30454
CRADData\Reports\PurpLienByApplincm_amt_Col.htm	30486
CRADData\Reports\PurpLienByApplincm_amt_Col_formula.xml	1529
CRADData\Reports\PurpLienByApplincm_amt_formula.xml	1313
CRADData\Reports\PurpLienByApplincm_amt_Grand.htm	30517
CRADData\Reports\PurpLienByApplincm_amt_Grand_formula.xml	1515
CRADData\Reports\PurpLienByApplincm_amt_Row.htm	30531
CRADData\Reports\PurpLienByApplincm_amt_Row_formula.xml	1529
CRADData\Reports\PurpLienByApplincm_cnt.htm	30473
CRADData\Reports\PurpLienByApplincm_cnt_Col.htm	30493
CRADData\Reports\PurpLienByApplincm_cnt_Col_formula.xml	1529
CRADData\Reports\PurpLienByApplincm_cnt_formula.xml	1313
CRADData\Reports\PurpLienByApplincm_cnt_Grand.htm	30575
CRADData\Reports\PurpLienByApplincm_cnt_Grand_formula.xml	1515
CRADData\Reports\PurpLienByApplincm_cnt_Row.htm	30526
CRADData\Reports\PurpLienByApplincm_cnt_Row_formula.xml	1529
CRADData\Reports\PurpLienByPropPrc_Amt.htm	35060
CRADData\Reports\PurpLienByPropPrc_amt_Col.htm	35069
CRADData\Reports\PurpLienByPropPrc_amt_Col_formula.xml	3518
CRADData\Reports\PurpLienByPropPrc_Amt_formula.xml	3108
CRADData\Reports\PurpLienByPropPrc_amt_Row.htm	35069
CRADData\Reports\PurpLienByPropPrc_amt_Row_formula.xml	3518
CRADData\Reports\PurpLienByPropPrc_Cnt.htm	35059
CRADData\Reports\PurpLienByPropPrc_Cnt_Col.htm	35068
CRADData\Reports\PurpLienByPropPrc_cnt_Col_formula.xml	3518
CRADData\Reports\PurpLienByPropPrc_Cnt_formula.xml	3108
CRADData\Reports\PurpLienByPropPrc_Cnt_Row.htm	35068
CRADData\Reports\PurpLienByPropPrc_cnt_Row_formula.xml	3518
CRADData\Reports\PurpLienByPropPrc_Data.xml	9542

CRADData\Reports\PurposeLienByRaceEth_Amt.htm	38787
CRADData\Reports\PurposeLienByRaceEth_Amt_Col.htm	37710
CRADData\Reports\PurposeLienByRaceEth_Amt_Col_formula.xml	2524
CRADData\Reports\PurposeLienByRaceEth_Amt_formula.xml	2092
CRADData\Reports\PurposeLienByRaceEth_Amt_Grand.htm	37758
CRADData\Reports\PurposeLienByRaceEth_Amt_Grand_formula.xml	2496
CRADData\Reports\PurposeLienByRaceEth_Amt_Row.htm	37705
CRADData\Reports\PurposeLienByRaceEth_Amt_Row_formula.xml	2524
CRADData\Reports\PurposeLienByRaceEth_cnt.htm	37676
CRADData\Reports\PurposeLienByRaceEth_cnt_Col.htm	37709
CRADData\Reports\PurposeLienByRaceEth_Cnt_Col_formula.xml	2524
CRADData\Reports\PurposeLienByRaceEth_Cnt_formula.xml	2092
CRADData\Reports\PurposeLienByRaceEth_cnt_Grand.htm	37716
CRADData\Reports\PurposeLienByRaceEth_Cnt_Grand_formula.xml	2496
CRADData\Reports\PurposeLienByRaceEth_cnt_Row.htm	37706
CRADData\Reports\PurposeLienByRaceEth_Cnt_Row_formula.xml	2524
CRADData\Reports\PurposeLienStatusByTracts_amt.htm	32588
CRADData\Reports\PurposeLienStatusByTracts_amt_Col.htm	31982
CRADData\Reports\PurposeLienStatusByTracts_amt_Col_formula.xml	2026
CRADData\Reports\PurposeLienStatusByTracts_amt_formula.xml	1702
CRADData\Reports\PurposeLienStatusByTracts_amt_Grand.htm	31989
CRADData\Reports\PurposeLienStatusByTracts_amt_Grand_formula.xml	2005
CRADData\Reports\PurposeLienStatusByTracts_amt_Row.htm	31981
CRADData\Reports\PurposeLienStatusByTracts_amt_Row_formula.xml	2026
CRADData\Reports\PurposeLienStatusByTracts_cnt.htm	31966
CRADData\Reports\PurposeLienStatusByTracts_cnt_Col.htm	31982
CRADData\Reports\PurposeLienStatusByTracts_cnt_Col_formula.xml	2026
CRADData\Reports\PurposeLienStatusByTracts_cnt_formula.xml	1702
CRADData\Reports\PurposeLienStatusByTracts_cnt_Grand.htm	32113
CRADData\Reports\PurposeLienStatusByTracts_cnt_Grand_formula.xml	2005
CRADData\Reports\PurposeLienStatusByTracts_cnt_Row.htm	32034
CRADData\Reports\PurposeLienStatusByTracts_cnt_Row_formula.xml	2026
CRADData\Reports\Purp_Type_v_MSA_amt.htm	1007
CRADData\Reports\Purp_Type_v_MSA_amt_Footer.xml	251
CRADData\Reports\Purp_Type_v_MSA_amt_formula.xml	20972
CRADData\Reports\Purp_Type_v_MSA_amt_Header.xml	784

CRADData\Reports\Purp_Type_v_MSA_amt_hmz4.htm	1029
CRADData\Reports\Purp_Type_v_MSA_amt_hmz4_Footer.xml	251
CRADData\Reports\Purp_Type_v_MSA_amt_hmz4_formula.xml	20203
CRADData\Reports\Purp_Type_v_MSA_amt_hmz4_Header.xml	846
CRADData\Reports\Purp_Type_v_MSA_cnt.htm	1007
CRADData\Reports\Purp_Type_v_MSA_cnt_Footer.xml	251
CRADData\Reports\Purp_Type_v_MSA_cnt_formula.xml	20586
CRADData\Reports\Purp_Type_v_MSA_cnt_Header.xml	846
CRADData\Reports\Purp_Type_v_MSA_cnt_hmz4.htm	1029
CRADData\Reports\Purp_Type_v_MSA_cnt_hmz4_Footer.xml	251
CRADData\Reports\Purp_Type_v_MSA_cnt_hmz4_formula.xml	20201
CRADData\Reports\Purp_Type_v_MSA_cnt_hmz4_Header.xml	846
CRADData\Reports\Purp_Type_v_MSA_Data_formula.xml	20824
CRADData\Reports\Purp_Type_v_MSA_hmz4_Data_000001.xml	3512
CRADData\Reports\Purp_v_App_Inc_amt.htm	20707
CRADData\Reports\Purp_v_App_Inc_amt_formula.xml	1180
CRADData\Reports\Purp_v_App_Inc_amt_hmz4.htm	20657
CRADData\Reports\Purp_v_App_Inc_amt_hmz4_formula.xml	1180
CRADData\Reports\Purp_v_App_Inc_cnt.htm	20718
CRADData\Reports\Purp_v_App_Inc_cnt_amt.htm	24352
CRADData\Reports\Purp_v_App_Inc_cnt_amt_formula.xml	1685
CRADData\Reports\Purp_v_App_Inc_cnt_amt_hmz4.htm	24008
CRADData\Reports\Purp_v_App_Inc_cnt_amt_hmz4_formula.xml	1688
CRADData\Reports\Purp_v_App_Inc_cnt_formula.xml	1177
CRADData\Reports\Purp_v_App_Inc_cnt_hmz4.htm	20347
CRADData\Reports\Purp_v_App_Inc_cnt_hmz4_formula.xml	1180
CRADData\Reports\Purp_v_App_Inc_Col_amt.htm	24362
CRADData\Reports\Purp_v_App_Inc_Col_amt_formula.xml	1879
CRADData\Reports\Purp_v_App_Inc_Col_amt_hmz4.htm	23122
CRADData\Reports\Purp_v_App_Inc_Col_amt_hmz4_formula.xml	1930
CRADData\Reports\Purp_v_App_Inc_Col_cnt.htm	24260
CRADData\Reports\Purp_v_App_Inc_Col_cnt_amt.htm	28305
CRADData\Reports\Purp_v_App_Inc_Col_cnt_amt_formula.xml	7670
CRADData\Reports\Purp_v_App_Inc_Col_cnt_amt_hmz4.htm	27135
CRADData\Reports\Purp_v_App_Inc_Col_cnt_amt_hmz4_formula.xml	6151
CRADData\Reports\Purp_v_App_Inc_Col_cnt_formula.xml	1921

CRADData\Reports\Purp_v_App_Inc_Col_cnt_hmz4.htm	23120
CRADData\Reports\Purp_v_App_Inc_Col_cnt_hmz4_formula.xml	1916
CRADData\Reports\Purp_v_App_Inc_Grand_amt.htm	26996
CRADData\Reports\Purp_v_App_Inc_Grand_amt_formula.xml	1921
CRADData\Reports\Purp_v_App_Inc_Grand_amt_hmz4.htm	25731
CRADData\Reports\Purp_v_App_Inc_Grand_amt_hmz4_formula.xml	1918
CRADData\Reports\Purp_v_App_Inc_Grand_cnt.htm	29001
CRADData\Reports\Purp_v_App_Inc_Grand_cnt_amt.htm	28585
CRADData\Reports\Purp_v_App_Inc_Grand_cnt_amt_formula.xml	7615
CRADData\Reports\Purp_v_App_Inc_Grand_cnt_amt_hmz4.htm	27435
CRADData\Reports\Purp_v_App_Inc_Grand_cnt_amt_hmz4_formula.xml	6103
CRADData\Reports\Purp_v_App_Inc_Grand_cnt_formula.xml	1907
CRADData\Reports\Purp_v_App_Inc_Grand_cnt_hmz4.htm	27909
CRADData\Reports\Purp_v_App_Inc_Grand_cnt_hmz4_formula.xml	1904
CRADData\Reports\Purp_v_App_Inc_hmz4_Data.xml	7311
CRADData\Reports\Purp_v_App_Inc_Row_amt.htm	27041
CRADData\Reports\Purp_v_App_Inc_Row_amt_formula.xml	1933
CRADData\Reports\Purp_v_App_Inc_Row_amt_hmz4.htm	25720
CRADData\Reports\Purp_v_App_Inc_Row_amt_hmz4_formula.xml	1930
CRADData\Reports\Purp_v_App_Inc_Row_cnt.htm	29043
CRADData\Reports\Purp_v_App_Inc_Row_cnt_amt.htm	28363
CRADData\Reports\Purp_v_App_Inc_Row_cnt_amt_formula.xml	7675
CRADData\Reports\Purp_v_App_Inc_Row_cnt_amt_hmz4.htm	27214
CRADData\Reports\Purp_v_App_Inc_Row_cnt_amt_hmz4_formula.xml	6151
CRADData\Reports\Purp_v_App_Inc_Row_cnt_formula.xml	1865
CRADData\Reports\Purp_v_App_Inc_Row_cnt_hmz4.htm	27899
CRADData\Reports\Purp_v_App_Inc_Row_cnt_hmz4_formula.xml	1881
CRADData\Reports\Purp_v_Tr_Inc.xml	7470
CRADData\Reports\Purp_v_Tr_Inc_amt.htm	20160
CRADData\Reports\Purp_v_Tr_Inc_amt_formula.xml	1236
CRADData\Reports\Purp_v_Tr_Inc_amt_hmz4.htm	19907
CRADData\Reports\Purp_v_Tr_Inc_amt_hmz4_formula.xml	1234
CRADData\Reports\Purp_v_Tr_Inc_cnt.htm	20690
CRADData\Reports\Purp_v_Tr_Inc_cnt_amt.htm	27417
CRADData\Reports\Purp_v_Tr_Inc_cnt_amt_formula.xml	1744
CRADData\Reports\Purp_v_Tr_Inc_cnt_amt_hmz4.htm	26658

CRADData\Reports\Purp_v_Tr_Inc_cnt_amt_hmz4_formula.xml	1744
CRADData\Reports\Purp_v_Tr_Inc_cnt_formula.xml	1236
CRADData\Reports\Purp_v_Tr_Inc_cnt_hmz4.htm	19983
CRADData\Reports\Purp_v_Tr_Inc_cnt_hmz4_formula.xml	1236
CRADData\Reports\Purp_v_Tr_Inc_Col_amt.htm	26097
CRADData\Reports\Purp_v_Tr_Inc_Col_amt_formula.xml	1932
CRADData\Reports\Purp_v_Tr_Inc_Col_amt_hmz4.htm	25217
CRADData\Reports\Purp_v_Tr_Inc_Col_amt_hmz4_formula.xml	1984
CRADData\Reports\Purp_v_Tr_Inc_Col_cnt.htm	26061
CRADData\Reports\Purp_v_Tr_Inc_Col_cnt_amt.htm	29818
CRADData\Reports\Purp_v_Tr_Inc_Col_cnt_amt_Footer.xml	136
CRADData\Reports\Purp_v_Tr_Inc_Col_cnt_amt_formula.xml	7670
CRADData\Reports\Purp_v_Tr_Inc_Col_cnt_amt_Header.xml	737
CRADData\Reports\Purp_v_Tr_Inc_Col_cnt_amt_hmz4.htm	28750
CRADData\Reports\Purp_v_Tr_Inc_Col_cnt_amt_hmz4_formula.xml	6203
CRADData\Reports\Purp_v_Tr_Inc_Col_cnt_formula.xml	1740
CRADData\Reports\Purp_v_Tr_Inc_Col_cnt_hmz4.htm	24860
CRADData\Reports\Purp_v_Tr_Inc_Col_cnt_hmz4_formula.xml	1972
CRADData\Reports\Purp_v_Tr_Inc_Grand_amt.htm	26107
CRADData\Reports\Purp_v_Tr_Inc_Grand_amt_formula.xml	1920
CRADData\Reports\Purp_v_Tr_Inc_Grand_amt_hmz4.htm	25213
CRADData\Reports\Purp_v_Tr_Inc_Grand_amt_hmz4_formula.xml	1972
CRADData\Reports\Purp_v_Tr_Inc_Grand_cnt.htm	26048
CRADData\Reports\Purp_v_Tr_Inc_Grand_cnt_amt.htm	29595
CRADData\Reports\Purp_v_Tr_Inc_Grand_cnt_amt_formula.xml	7666
CRADData\Reports\Purp_v_Tr_Inc_Grand_cnt_amt_hmz4.htm	28802
CRADData\Reports\Purp_v_Tr_Inc_Grand_cnt_amt_hmz4_formula.xml	6155
CRADData\Reports\Purp_v_Tr_Inc_Grand_cnt_formula.xml	1908
CRADData\Reports\Purp_v_Tr_Inc_Grand_cnt_hmz4.htm	25154
CRADData\Reports\Purp_v_Tr_Inc_Grand_cnt_hmz4_formula.xml	1960
CRADData\Reports\Purp_v_Tr_Inc_Row_amt.htm	26142
CRADData\Reports\Purp_v_Tr_Inc_Row_amt_formula.xml	1932
CRADData\Reports\Purp_v_Tr_Inc_Row_amt_hmz4.htm	25248
CRADData\Reports\Purp_v_Tr_Inc_Row_amt_hmz4_formula.xml	1974
CRADData\Reports\Purp_v_Tr_Inc_Row_cnt.htm	26030
CRADData\Reports\Purp_v_Tr_Inc_Row_cnt_amt.htm	29939

CRADData\Reports\Purp_v_Tr_Inc_Row_cnt_amt_formula.xml	7724
CRADData\Reports\Purp_v_Tr_Inc_Row_cnt_amt_hmz4.htm	28882
CRADData\Reports\Purp_v_Tr_Inc_Row_cnt_amt_hmz4_formula.xml	6203
CRADData\Reports\Purp_v_Tr_Inc_Row_cnt_formula.xml	1920
CRADData\Reports\Purp_v_Tr_Inc_Row_cnt_hmz4.htm	25145
CRADData\Reports\Purp_v_Tr_Inc_Row_cnt_hmz4_formula.xml	1917
CRADData\Reports\Race_v_Action_amt.htm	26764
CRADData\Reports\Race_v_Action_amt_formula.xml	1333
CRADData\Reports\Race_v_Action_cnt.htm	26814
CRADData\Reports\Race_v_Action_cnt_amt.htm	34553
CRADData\Reports\Race_v_Action_cnt_amt_formula.xml	1925
CRADData\Reports\Race_v_Action_cnt_formula.xml	1273
CRADData\Reports\Race_v_Action_Col_amt.htm	27271
CRADData\Reports\Race_v_Action_Col_amt_formula.xml	1535
CRADData\Reports\Race_v_Action_Col_cnt.htm	27439
CRADData\Reports\Race_v_Action_Col_cnt_formula.xml	1521
CRADData\Reports\Race_v_Action_Grand_amt.htm	27604
CRADData\Reports\Race_v_Action_Grand_amt_formula.xml	1522
CRADData\Reports\Race_v_Action_Grand_cnt.htm	27548
CRADData\Reports\Race_v_Action_Grand_cnt_formula.xml	1508
CRADData\Reports\Race_v_Action_Row_amt.htm	27493
CRADData\Reports\Race_v_Action_Row_amt_formula.xml	1535
CRADData\Reports\Race_v_Action_Row_cnt.htm	27454
CRADData\Reports\Race_v_Action_Row_cnt_formula.xml	1521
CRADData\Reports\Race_v_Action_RtoW_amt.htm	27329
CRADData\Reports\Race_v_Action_RtoW_amt_formula.xml	1507
CRADData\Reports\Race_v_Action_RtoW_cnt.htm	27319
CRADData\Reports\Race_v_Action_RtoW_cnt_formula.xml	1507
CRADData\Reports\Race_v_App_Inc_amt.htm	30810
CRADData\Reports\Race_v_App_Inc_amt_formula.xml	1662
CRADData\Reports\Race_v_App_Inc_cnt.htm	30753
CRADData\Reports\Race_v_App_Inc_cnt_formula.xml	1588
CRADData\Reports\Race_v_App_Inc_Col_amt.htm	31000
CRADData\Reports\Race_v_App_Inc_Col_amt_formula.xml	1968
CRADData\Reports\Race_v_App_Inc_Col_cnt.htm	30989
CRADData\Reports\Race_v_App_Inc_Col_cnt_formula.xml	1958

CRADData\Reports\Race_v_App_Inc_Grand_amt.htm	31003
CRADData\Reports\Race_v_App_Inc_Grand_amt_formula.xml	2026
CRADData\Reports\Race_v_App_Inc_Grand_cnt.htm	31055
CRADData\Reports\Race_v_App_Inc_Grand_cnt_formula.xml	2022
CRADData\Reports\Race_v_App_Inc_Row_amt.htm	30994
CRADData\Reports\Race_v_App_Inc_Row_amt_formula.xml	2028
CRADData\Reports\Race_v_App_Inc_Row_cnt.htm	30993
CRADData\Reports\Race_v_App_Inc_Row_cnt_formula.xml	2024
CRADData\Reports\Race_v_App_Inc_RtoW_amt.htm	31054
CRADData\Reports\Race_v_App_Inc_RtoW_amt_formula.xml	1912
CRADData\Reports\Race_v_App_Inc_RtoW_cnt.htm	31072
CRADData\Reports\Race_v_App_Inc_RtoW_cnt_formula.xml	1875
CRADData\Reports\Race_v_App_Inc_SCT_amt.htm	30992
CRADData\Reports\Race_v_App_Inc_SCT_amt_formula.xml	1905
CRADData\Reports\Race_v_App_Inc_SCT_cnt.htm	31051
CRADData\Reports\Race_v_App_Inc_SCT_cnt_formula.xml	1885
CRADData\Reports\RATA_Address_Validation.htm	1044
CRADData\Reports\RATA_Address_Validation_by_Branch.htm	1083
CRADData\Reports\RATA_Address_Validation_by_Branch_Footer.xml	199
CRADData\Reports\RATA_Address_Validation_by_Branch_Formula.xml	15969
CRADData\Reports\RATA_Address_Validation_by_Branch_Header.xml	410
CRADData\Reports\RATA_Address_Validation_Footer.xml	199
CRADData\Reports\RATA_Address_Validation_formula.xml	15713
CRADData\Reports\RATA_Address_Validation_Header.xml	410
CRADData\Reports\RATA_Geocode_Update.htm	1034
CRADData\Reports\RATA_Geocode_Update_By_Branch.htm	1074
CRADData\Reports\RATA_Geocode_Update_By_Branch_Footer.xml	199
CRADData\Reports\RATA_Geocode_Update_By_Branch_Formula.xml	17754
CRADData\Reports\RATA_Geocode_Update_By_Branch_Header.xml	408
CRADData\Reports\RATA_Geocode_Update_Footer.xml	199
CRADData\Reports\RATA_Geocode_Update_Formula.xml	17344
CRADData\Reports\RATA_Geocode_Update_Header.xml	405
CRADData\Reports\RATA_Geocode_Validation.htm	833
CRADData\Reports\RATA_Geocode_Validation_By_Branch.htm	959
CRADData\Reports\RATA_Geocode_Validation_By_Branch_Footer.xml	200
CRADData\Reports\RATA_Geocode_Validation_By_Branch_formula.xml	15722



CRADData\Reports\RATA_Geocode_Validation_By_Branch_Header.xml	410
CRADData\Reports\RATA_Geocode_Validation_Footer.xml	199
CRADData\Reports\RATA_Geocode_Validation_formula.xml	16784
CRADData\Reports\RATA_Geocode_Validation_Header.xml	410
CRADData\Reports\Ratio_to_white_Option.htm	4000
CRADData\Reports\Ratio_to_white_Option2.htm	3131
CRADData\Reports\Ratio_to_white_Option3.htm	4027
CRADData\Reports\REPORT.doc	281088
CRADData\Reports\REPORT_A.doc	276992
CRADData\Reports\sample.xml	15
CRADData\Reports\SB_Mkt_Shr_County.htm	1019
CRADData\Reports\SB_Mkt_Shr_County_footer.xml	220
CRADData\Reports\SB_Mkt_Shr_County_formula.xml	18671
CRADData\Reports\SB_Mkt_Shr_County_header.xml	581
CRADData\Reports\SB_Mkt_Shr_Lender.htm	1019
CRADData\Reports\SB_Mkt_Shr_Lender_footer.xml	218
CRADData\Reports\SB_Mkt_Shr_Lender_formula.xml	16768
CRADData\Reports\SB_Mkt_Shr_Lender_header.xml	591
CRADData\Reports\SB_Mkt_Shr_MSA.htm	1007
CRADData\Reports\SB_Mkt_Shr_MSA_footer.xml	220
CRADData\Reports\SB_Mkt_Shr_MSA_formula.xml	17979
CRADData\Reports\SB_Mkt_Shr_MSA_header.xml	575
CRADData\Reports\SB_Mkt_Shr_Tract.htm	1015
CRADData\Reports\SB_Mkt_Shr_Tract_footer.xml	220
CRADData\Reports\SB_Mkt_Shr_Tract_formula.xml	18748
CRADData\Reports\SB_Mkt_Shr_Tract_header.xml	579
CRADData\Reports\SB_Regular_Std_Summary.htm	56845
CRADData\Reports\SB_Regular_Std_Summary_formula.xml	27708
CRADData\Reports\sb_revenues_first.htm	998
CRADData\Reports\sb_revenues_first_Footer.xml	251
CRADData\Reports\sb_revenues_first_formula.xml	28841
CRADData\Reports\sb_revenues_first_Header.xml	821
CRADData\Reports\sb_revenues_second.htm	1002
CRADData\Reports\sb_revenues_second_Footer.xml	251
CRADData\Reports\sb_revenues_second_formula.xml	25268
CRADData\Reports\sb_revenues_second_Header.xml	760

CRADData\Reports\sb_revenues_third.htm	998
CRADData\Reports\sb_revenues_third_Footer.xml	251
CRADData\Reports\sb_revenues_third_formula.xml	31455
CRADData\Reports\sb_revenues_third_Header.xml	838
CRADData\Reports\SB_Std_Summary.htm	46832
CRADData\Reports\SB_Std_Summary_Data.xml	12213
CRADData\Reports\SB_Std_Summary_formula.xml	21646
CRADData\Reports\ScriptX.cab	183600
CRADData\Reports\Sex_v_Appl_Inc_amt.htm	23649
CRADData\Reports\Sex_v_Appl_Inc_amt_formula.xml	1178
CRADData\Reports\Sex_v_Appl_Inc_cnt.htm	23644
CRADData\Reports\Sex_v_Appl_Inc_cnt_amt.htm	23644
CRADData\Reports\Sex_v_Appl_Inc_cnt_formula.xml	1170
CRADData\Reports\Sex_v_Appl_Inc_Col_amt.htm	23668
CRADData\Reports\Sex_v_Appl_Inc_Col_amt_formula.xml	1408
CRADData\Reports\Sex_v_Appl_Inc_Col_cnt.htm	23661
CRADData\Reports\Sex_v_Appl_Inc_Col_cnt_formula.xml	1396
CRADData\Reports\Sex_v_Appl_Inc_Grand_amt.htm	23668
CRADData\Reports\Sex_v_Appl_Inc_Grand_amt_formula.xml	1396
CRADData\Reports\Sex_v_Appl_Inc_Grand_cnt.htm	23669
CRADData\Reports\Sex_v_Appl_Inc_Grand_cnt_formula.xml	1384
CRADData\Reports\Sex_v_Appl_Inc_Row_amt.htm	23664
CRADData\Reports\Sex_v_Appl_Inc_Row_amt_formula.xml	1408
CRADData\Reports\Sex_v_Appl_Inc_Row_cnt.htm	23663
CRADData\Reports\Sex_v_Appl_Inc_Row_cnt_formula.xml	1396
CRADData\Reports\smsx.cab	544998
CRADData\Reports\StdSummaryAction.htm	56538
CRADData\Reports\StdSummaryAction2.htm	56550
CRADData\Reports\StdSummaryAction2_formula.xml	5494
CRADData\Reports\StdSummaryAction_Data.xml	25161
CRADData\Reports\StdSummaryAction_formula.xml	5562
CRADData\Reports\Std_Summary_Auto_amt.htm	59702
CRADData\Reports\Std_Summary_Auto_amt2.htm	59646
CRADData\Reports\Std_Summary_auto_amt_formula.xml	5585
CRADData\Reports\Std_Summary_Auto_cnt.htm	59673
CRADData\Reports\Std_Summary_Auto_cnt2.htm	59617

CRADData\Reports\Std_Summary_Auto_cnt_amt.htm	80062
CRADData\Reports\Std_Summary_Auto_cnt_amt2.htm	80075
CRADData\Reports\Std_Summary_auto_cnt_amt_formula.xml	9986
CRADData\Reports\Std_Summary_auto_cnt_formula.xml	5504
CRADData\Reports\Std_Summary_Cons_amt.htm	58619
CRADData\Reports\Std_Summary_Cons_amt2.htm	58563
CRADData\Reports\Std_Summary_cons_amt_formula.xml	5585
CRADData\Reports\Std_Summary_Cons_cnt.htm	58590
CRADData\Reports\Std_Summary_Cons_cnt2.htm	58534
CRADData\Reports\Std_Summary_Cons_cnt_amt.htm	78488
CRADData\Reports\Std_Summary_Cons_cnt_amt2.htm	78498
CRADData\Reports\Std_Summary_cons_cnt_amt_formula.xml	9986
CRADData\Reports\Std_Summary_cons_cnt_formula.xml	5504
CRADData\Reports\Sum SB Lending AA Amount PCol.htm	55304
CRADData\Reports\Sum SB Lending AA Amount PGrand.htm	55212
CRADData\Reports\Sum SB Lending AA Amount PRow.htm	55202
CRADData\Reports\Sum SB Lending AA Amount.htm	55241
CRADData\Reports\Sum SB Lending AA Tract.htm	43679
CRADData\Reports\Sum SB Lending County Amount PColumn.htm	55232
CRADData\Reports\Sum SB Lending County Amount PGrand.htm	55236
CRADData\Reports\Sum SB Lending County Amount PRow.htm	55226
CRADData\Reports\Sum SB Lending County Amount.htm	55266
CRADData\Reports\Sum SB Lending County Tract.htm	43704
CRADData\Reports\Sum SB Lending MSA Amount PColumn.htm	55339
CRADData\Reports\Sum SB Lending MSA Amount PGrand.htm	55343
CRADData\Reports\Sum SB Lending MSA Amount PRow.htm	55333
CRADData\Reports\Sum SB Lending MSA Amount.htm	55286
CRADData\Reports\Sum SB Lending MSA Tract.htm	43723
CRADData\Reports\Sum SB Lending State Amount PColumn.htm	55258
CRADData\Reports\Sum SB Lending State Amount PGrand.htm	55262
CRADData\Reports\Sum SB Lending State Amount PRow.htm	55252
CRADData\Reports\Sum SB Lending State Amount.htm	55292
CRADData\Reports\Sum SB Lending State Tract.htm	43730
CRADData\Reports\Sum1_Action.htm	60244
CRADData\Reports\Sum1_Action_amt.htm	57900
CRADData\Reports\Sum1_Action_amt_formula.xml	5937

CRADData\Reports\Sum1_Action_cnt.htm	58503
CRADData\Reports\Sum1_Action_cnt_formula.xml	5846
CRADData\Reports\Sum1_Action_formula.xml	6399
CRADData\Reports\Sum_H4PR_Action_amt.htm	66364
CRADData\Reports\Sum_H4PR_Action_amt_formula.xml	9897
CRADData\Reports\Sum_H4PR_Action_cnt.htm	67556
CRADData\Reports\Sum_H4PR_Action_cnt_formula.xml	9216
CRADData\Reports\Sum_H4PR_AppInc_amt.htm	70735
CRADData\Reports\Sum_H4PR_AppInc_amt_formula.xml	11157
CRADData\Reports\Sum_H4PR_AppInc_cnt.htm	67362
CRADData\Reports\Sum_H4PR_AppInc_cnt_formula.xml	10197
CRADData\Reports\Sum_H4PR_AppRace_amt.htm	51082
CRADData\Reports\Sum_H4PR_AppRace_amt_formula.xml	6557
CRADData\Reports\Sum_H4PR_AppRace_cnt.htm	50813
CRADData\Reports\Sum_H4PR_AppRace_cnt_formula.xml	6061
CRADData\Reports\Sum_H4PR_TraInc_amt.htm	67639
CRADData\Reports\Sum_H4PR_TraInc_amt_formula.xml	11124
CRADData\Reports\Sum_H4PR_TraInc_cnt.htm	69722
CRADData\Reports\Sum_H4PR_TraInc_cnt_formula.xml	10584
CRADData\Reports\Sum_H4PR_TypePurp_amt.htm	64259
CRADData\Reports\Sum_H4PR_TypePurp_amt_formula.xml	9807
CRADData\Reports\Sum_H4PR_TypePurp_cnt.htm	64233
CRADData\Reports\Sum_H4PR_TypePurp_cnt_formula.xml	9129
CRADData\Reports\Sum_Peer_Action_amt.htm	54983
CRADData\Reports\Sum_Peer_Action_amt_formula.xml	6296
CRADData\Reports\Sum_Peer_Action_cnt.htm	54883
CRADData\Reports\Sum_Peer_Action_cnt_formula.xml	5930
CRADData\Reports\Sum_peer_AppInc_amt.htm	63572
CRADData\Reports\Sum_Peer_AppInc_amt_formula.xml	7158
CRADData\Reports\Sum_peer_AppInc_cnt.htm	57368
CRADData\Reports\Sum_Peer_AppInc_cnt_formula.xml	6561
CRADData\Reports\Sum_peer_AppRace_amt.htm	61445
CRADData\Reports\Sum_Peer_AppRace_amt_formula.xml	7130
CRADData\Reports\Sum_peer_AppRace_cnt.htm	55713
CRADData\Reports\Sum_Peer_AppRace_cnt_formula.xml	6559
CRADData\Reports\Sum_peer_TraInc_amt.htm	63171

CRADData\Reports\Sum_Peer_TraInc_amt_formula.xml	7149
CRADData\Reports\Sum_peer_TraInc_cnt.htm	57881
CRADData\Reports\Sum_Peer_TraInc_cnt_formula.xml	6957
CRADData\Reports\Sum_peer_TypePurp_amt.htm	62795
CRADData\Reports\Sum_Peer_TypePurp_amt_formula.xml	7202
CRADData\Reports\Sum_peer_TypePurp_cnt.htm	58789
CRADData\Reports\Sum_Peer_TypePurp_cnt_formula.xml	6665
CRADData\Reports\Tract Type Cov wi AA.htm	22761
CRADData\Reports\TrctIncmLienByPurpPropPrc_Amt.htm	52347
CRADData\Reports\TrctIncmLienByPurpPropPrc_Amt_Col.htm	52372
CRADData\Reports\TrctIncmLienByPurpPropPrc_Amt_Col_formula.xml	7220
CRADData\Reports\TrctIncmLienByPurpPropPrc_Amt_formula.xml	9506
CRADData\Reports\TrctIncmLienByPurpPropPrc_Amt_Row.htm	52370
CRADData\Reports\TrctIncmLienByPurpPropPrc_Amt_Row_formula.xml	7220
CRADData\Reports\TrctIncmLienByPurpPropPrc_Cnt.htm	52391
CRADData\Reports\TrctIncmLienByPurpPropPrc_Cnt_Col.htm	52237
CRADData\Reports\TrctIncmLienByPurpPropPrc_Cnt_Col_formula.xml	7220
CRADData\Reports\TrctIncmLienByPurpPropPrc_Cnt_formula.xml	9506
CRADData\Reports\TrctIncmLienByPurpPropPrc_Cnt_Row.htm	52371
CRADData\Reports\TrctIncmLienByPurpPropPrc_Cnt_Row_formula.xml	7220
CRADData\Reports\Tr_Inc_v_app_Inc_amt.htm	27595
CRADData\Reports\Tr_Inc_v_App_Inc_amt_formula.xml	1214
CRADData\Reports\Tr_Inc_v_app_Inc_cnt.htm	23761
CRADData\Reports\Tr_Inc_v_app_Inc_cnt_amt.htm	24771
CRADData\Reports\Tr_Inc_v_App_Inc_cnt_amt_formula.xml	1711
CRADData\Reports\Tr_Inc_v_App_Inc_cnt_formula.xml	1206
CRADData\Reports\Tr_Inc_v_app_Inc_Col_amt.htm	26446
CRADData\Reports\Tr_Inc_v_App_Inc_Col_amt_formula.xml	1986
CRADData\Reports\Tr_Inc_v_app_Inc_Col_cnt.htm	26988
CRADData\Reports\Tr_Inc_v_app_Inc_Col_cnt_amt.htm	30830
CRADData\Reports\Tr_Inc_v_app_Inc_Col_cnt_amt_formula.xml	9143
CRADData\Reports\Tr_Inc_v_App_Inc_Col_cnt_formula.xml	1978
CRADData\Reports\Tr_Inc_v_app_Inc_Grand_amt.htm	25587
CRADData\Reports\Tr_Inc_v_App_Inc_Grand_amt_formula.xml	1974
CRADData\Reports\Tr_Inc_v_app_Inc_Grand_cnt.htm	26164
CRADData\Reports\Tr_Inc_v_app_Inc_Grand_cnt_amt.htm	30484

CRADData\Reports\Tr_Inc_v_App_Inc_Grand_cnt_amt_formula.xml	9071
CRADData\Reports\Tr_Inc_v_App_Inc_Grand_cnt_formula.xml	1966
CRADData\Reports\Tr_Inc_v_app_Inc_Row_amt.htm	25954
CRADData\Reports\Tr_Inc_v_App_Inc_Row_amt_formula.xml	1986
CRADData\Reports\Tr_Inc_v_app_Inc_Row_cnt.htm	26080
CRADData\Reports\Tr_Inc_v_app_Inc_Row_cnt_amt.htm	30963
CRADData\Reports\Tr_Inc_v_App_Inc_Row_cnt_amt_formula.xml	8278
CRADData\Reports\Tr_Inc_v_App_Inc_Row_cnt_formula.xml	1978
CRADData\Reports\Tr_Inc_v_Products.htm	23020
CRADData\Reports\Tr_Inc_v_Products_Busi.htm	25411
CRADData\Reports\Tr_Inc_v_Products_Busi_formula.xml	1709
CRADData\Reports\Tr_Inc_v_Products_Cons.htm	24584
CRADData\Reports\Tr_Inc_v_Products_Cons_formula.xml	1505
CRADData\Reports\Tr_Inc_v_Products_Data.xml	3028
CRADData\Reports\Tr_Inc_v_Products_formula.xml	1281
CRADData\Reports\Tr_Inc_v_Products_Hmda.htm	24502
CRADData\Reports\Tr_Inc_v_Products_Hmda_formula.xml	1493
CRADData\Reports\Tr_Min_v_Products.htm	23922
CRADData\Reports\Tr_Min_v_Products_Busi.htm	26407
CRADData\Reports\Tr_Min_v_Products_Busi_formula.xml	1706
CRADData\Reports\Tr_Min_v_Products_Cons.htm	25500
CRADData\Reports\Tr_Min_v_Products_Cons_formula.xml	1502
CRADData\Reports\Tr_Min_v_Products_formula.xml	1278
CRADData\Reports\Tr_Min_v_Products_Hmda.htm	25338
CRADData\Reports\Tr_Min_v_Products_Hmda_formula.xml	1490
CRADData\Reports\Tr_Min_v_Tr_Inc_amt.htm	25897
CRADData\Reports\Tr_Min_v_Tr_Inc_amt_formula.xml	1879
CRADData\Reports\Tr_Min_v_Tr_Inc_cnt.htm	26457
CRADData\Reports\Tr_Min_v_Tr_Inc_cnt_amt.htm	34594
CRADData\Reports\Tr_Min_v_Tr_Inc_cnt_amt_formula.xml	9478
CRADData\Reports\Tr_Min_v_Tr_Inc_cnt_formula.xml	1704
CRADData\Reports\Tr_Min_v_Tr_Inc_Col_amt.htm	26388
CRADData\Reports\Tr_Min_v_Tr_Inc_Col_amt_formula.xml	2291
CRADData\Reports\Tr_Min_v_Tr_Inc_Col_cnt.htm	26301
CRADData\Reports\Tr_Min_v_Tr_Inc_Col_cnt_amt.htm	34638
CRADData\Reports\Tr_Min_v_Tr_Inc_Col_cnt_amt_formula.xml	12718

CRADData\Reports\Tr_Min_v_Tr_Inc_Col_cnt_formula.xml	2281
CRADData\Reports\Tr_Min_v_Tr_Inc_Grand_amt.htm	26375
CRADData\Reports\Tr_Min_v_Tr_Inc_Grand_amt_formula.xml	2319
CRADData\Reports\Tr_Min_v_Tr_Inc_Grand_cnt.htm	26396
CRADData\Reports\Tr_Min_v_Tr_Inc_Grand_cnt_amt.htm	34624
CRADData\Reports\Tr_Min_v_Tr_Inc_Grand_cnt_amt_formula.xml	12935
CRADData\Reports\Tr_Min_v_Tr_Inc_Grand_cnt_formula.xml	2315
CRADData\Reports\Tr_Min_v_Tr_Inc_Row_amt.htm	26031
CRADData\Reports\Tr_Min_v_Tr_Inc_Row_amt_formula.xml	2321
CRADData\Reports\Tr_Min_v_Tr_Inc_Row_cnt.htm	26386
CRADData\Reports\Tr_Min_v_Tr_Inc_Row_cnt_amt.htm	34614
CRADData\Reports\Tr_Min_v_Tr_Inc_Row_cnt_amt_formula.xml	12949
CRADData\Reports\Tr_Min_v_Tr_Inc_Row_cnt_formula.xml	2317
CRADData\Reports\Tr_Min_v_Tr_Inc_SCT_amt.htm	25888
CRADData\Reports\Tr_Min_v_Tr_Inc_SCT_amt_formula.xml	1849
CRADData\Reports\Tr_Min_v_Tr_Inc_SCT_cnt.htm	25712
CRADData\Reports\Tr_Min_v_Tr_Inc_SCT_cnt_formula.xml	1825
CRADData\Reports\Type_v_App_Inc_amt.htm	21312
CRADData\Reports\Type_v_App_Inc_amt_formula.xml	1238
CRADData\Reports\Type_v_App_Inc_cnt.htm	21357
CRADData\Reports\Type_v_App_Inc_cnt_amt.htm	26130
CRADData\Reports\Type_v_App_Inc_cnt_amt_formula.xml	1792
CRADData\Reports\Type_v_App_Inc_cnt_formula.xml	1279
CRADData\Reports\Type_v_App_Inc_Col_amt.htm	27359
CRADData\Reports\Type_v_App_Inc_Col_amt_formula.xml	2051
CRADData\Reports\Type_v_App_Inc_Col_cnt.htm	27328
CRADData\Reports\Type_v_App_Inc_Col_cnt_amt.htm	34202
CRADData\Reports\Type_v_App_Inc_Col_cnt_amt_formula.xml	15214
CRADData\Reports\Type_v_App_Inc_Col_cnt_formula.xml	2039
CRADData\Reports\Type_v_App_Inc_Grand_amt.htm	28015
CRADData\Reports\Type_v_App_Inc_Grand_amt_formula.xml	2015
CRADData\Reports\Type_v_App_Inc_Grand_cnt.htm	26489
CRADData\Reports\Type_v_App_Inc_Grand_cnt_amt.htm	34055
CRADData\Reports\Type_v_App_Inc_Grand_cnt_amt_formula.xml	15096
CRADData\Reports\Type_v_App_Inc_Grand_cnt_formula.xml	2027
CRADData\Reports\Type_v_App_Inc_Row_amt.htm	27476

CRADData\Reports\Type_v_App_Inc_Row_amt_formula.xml	2051
CRADData\Reports\Type_v_App_Inc_Row_cnt.htm	27469
CRADData\Reports\Type_v_App_Inc_Row_cnt_amt.htm	34416
CRADData\Reports\Type_v_App_Inc_Row_cnt_amt_formula.xml	15214
CRADData\Reports\Type_v_App_Inc_Row_cnt_formula.xml	2039
CRADData\Reports\Type_v_Tr_Inc_amt.htm	24105
CRADData\Reports\Type_v_Tr_Inc_amt_formula.xml	1238
CRADData\Reports\Type_v_Tr_Inc_cnt.htm	22345
CRADData\Reports\Type_v_Tr_Inc_cnt_amt.htm	29410
CRADData\Reports\Type_v_Tr_Inc_cnt_amt_formula.xml	1792
CRADData\Reports\Type_v_Tr_Inc_cnt_formula.xml	1279
CRADData\Reports\Type_v_Tr_Inc_Col_amt.htm	27692
CRADData\Reports\Type_v_Tr_Inc_Col_amt_formula.xml	2051
CRADData\Reports\Type_v_Tr_Inc_Col_cnt.htm	27709
CRADData\Reports\Type_v_Tr_Inc_Col_cnt_amt.htm	37848
CRADData\Reports\Type_v_Tr_Inc_Col_cnt_amt_formula.xml	15214
CRADData\Reports\Type_v_Tr_Inc_Col_cnt_formula.xml	2039
CRADData\Reports\Type_v_Tr_Inc_Grand_amt.htm	28345
CRADData\Reports\Type_v_Tr_Inc_Grand_amt_formula.xml	2015
CRADData\Reports\type_v_Tr_Inc_Grand_cnt.htm	26777
CRADData\Reports\type_v_tr_inc_grand_cnt_amt.htm	37148
CRADData\Reports\Type_v_Tr_Inc_Grand_cnt_amt_formula.xml	15096
CRADData\Reports\Type_v_Tr_Inc_Grand_cnt_formula.xml	2027
CRADData\Reports\Type_v_Tr_Inc_Row_amt.htm	27802
CRADData\Reports\Type_v_Tr_Inc_Row_amt_formula.xml	2051
CRADData\Reports\Type_v_Tr_Inc_Row_cnt.htm	27566
CRADData\Reports\type_v_tr_inc_row_cnt_amt.htm	37310
CRADData\Reports\Type_v_Tr_Inc_Row_cnt_amt_formula.xml	15214
CRADData\Reports\Type_v_Tr_Inc_Row_cnt_formula.xml	2039
CRADData\Reports\UpprTract_Lending.htm	998
CRADData\Reports\UpprTract_Lending1.htm	1007
CRADData\Reports\UpprTract_Lending_Footer.xml	247
CRADData\Reports\UpprTract_Lending_formula.xml	24123
CRADData\Reports\UpprTract_Lending_Header.xml	810
CRADData\Reports\WorkshA1.htm	986
CRADData\Reports\WorkshA1_Eth.htm	1000



CRADData\Reports\WorkshA1_Eth_footer.xml	259
CRADData\Reports\WorkshA1_Eth_formula.xml	21916
CRADData\Reports\WorkshA1_Eth_Header.xml	579
CRADData\Reports\WorkshA1_Footer.xml	265
CRADData\Reports\WorkshA1_formula.xml	24128
CRADData\Reports\WorkshA1_Header.xml	561
CRADData\Reports\WorkshA1_Race.htm	1003
CRADData\Reports\WorkshA1_Race_footer.xml	259
CRADData\Reports\WorkshA1_Race_formula.xml	24486
CRADData\Reports\WorkshA1_Race_Header.xml	579
CRADData\Reports\WorkshA2.htm	986
CRADData\Reports\WorkshA2_Footer.xml	263
CRADData\Reports\WorkshA2_formula.xml	22002
CRADData\Reports\WorkshA2_Header.xml	563
CRADData\Reports\WorkshA3.htm	986
CRADData\Reports\WorkshA3_Footer.xml	265
CRADData\Reports\WorkshA3_formula.xml	22203
CRADData\Reports\WorkshA3_Header.xml	561
CRADData\Reports\WorkshA4.htm	986
CRADData\Reports\WorkshA4_Footer.xml	265
CRADData\Reports\WorkshA4_formula.xml	26771
CRADData\Reports\WorkshA4_Header.xml	562
CRADData\Reports\WorkshA5.htm	986
CRADData\Reports\WorkshA5_Footer.xml	265
CRADData\Reports\WorkshA5_formula.xml	21917
CRADData\Reports\WorkshA5_Header.xml	561
CRADData\Reports\WorkshA6.htm	986
CRADData\Reports\WorkshA6_Footer.xml	265
CRADData\Reports\WorkshA6_formula.xml	23408
CRADData\Reports\WorkshA6_Header.xml	561
CRADData\Reports\WorkshA7.htm	986
CRADData\Reports\WorkshA7_Footer.xml	263
CRADData\Reports\WorkshA7_formula.xml	29401
CRADData\Reports\WorkshA7_Header.xml	563
CRADData\Reports\WorkshA8.htm	986
CRADData\Reports\WorkshA8_Footer.xml	263

CRADData\Reports\WorkshA8_formula.xml	21460
CRADData\Reports\WorkshA8_Header.xml	559
CRADData\Reports\WorkshA_Eth1.htm	1000
CRADData\Reports\WorkshA_Race1.htm	1003
CRADData\Reports\WorkshD.htm	982
CRADData\Reports\WorkshD1_Eth.htm	997
CRADData\Reports\WorkshD1_Eth_footer.xml	259
CRADData\Reports\WorkshD1_Eth_formula.xml	21104
CRADData\Reports\WorkshD1_Eth_header.xml	531
CRADData\Reports\WorkshD1_Race.htm	1000
CRADData\Reports\WorkshD1_Race_footer.xml	259
CRADData\Reports\WorkshD1_Race_formula.xml	24785
CRADData\Reports\WorkshD1_Race_header.xml	528
CRADData\Reports\WorkshD2.htm	985
CRADData\Reports\WorkshD2_Footer.xml	265
CRADData\Reports\WorkshD2_formula.xml	33944
CRADData\Reports\WorkshD2_Header.xml	745
CRADData\Reports\WorkshD2_hmz4.htm	1000
CRADData\Reports\WorkshD2_hmz4_footer.xml	259
CRADData\Reports\WorkshD2_hmz4_formula.xml	36395
CRADData\Reports\WorkshD2_hmz4_header.xml	554
CRADData\Reports\WorkshD_Footer.xml	265
CRADData\Reports\WorkshD_formula.xml	21295
CRADData\Reports\WorkshD_Header.xml	625
CRADData\Reports\WorkshK.htm	982
CRADData\Reports\WorkshK1.htm	986
CRADData\Reports\WorkshK1_Footer.xml	265
CRADData\Reports\WorkshK1_formula.xml	17014
CRADData\Reports\WorkshK1_Header.xml	534
CRADData\Reports\WorkshK1_hmz4.htm	1000
CRADData\Reports\WorkshK1_hmz4_footer.xml	259
CRADData\Reports\WorkshK1_hmz4_formula.xml	35895
CRADData\Reports\WorkshK1_hmz4_header.xml	577
CRADData\Reports\WorkshK2.htm	986
CRADData\Reports\WorkshK2_footer.xml	259
CRADData\Reports\WorkshK2_formula.xml	17288

CRADData\Reports\WorkshK2_header.xml	538
CRADData\Reports\WorkshK_Footer.xml	263
CRADData\Reports\WorkshK_formula.xml	33788
CRADData\Reports\WorkshK_Header.xml	573
CRADData\Reports\WorkshL.htm	982
CRADData\Reports\WorkshL_Footer.xml	263
CRADData\Reports\WorkshL_formula.xml	17558
CRADData\Reports\WorkshL_Header.xml	488
CRADData\Reports\CrystalEngine\Custom_Lar_Report.rpt	14336
CRADData\Reports\CrystalEngine\DemogCompare.rpt	55808
CRADData\Reports\CrystalEngine\DemogCompare_1990.rpt	55808
CRADData\Reports\CrystalEngine\DemogCompare_2000.rpt	16384
CRADData\Reports\CrystalEngine\detail_change_history_by_applnumb_report.rpt	16384
CRADData\Reports\CrystalEngine\exception_detail_CRA.rpt	16384
CRADData\Reports\CrystalEngine\exception_detail_HMDA.rpt	16384
CRADData\Reports\CrystalEngine\exception_detail_hmz4.rpt	32768
CRADData\Reports\CrystalEngine\exception_recordLevel.rpt	11264
CRADData\Reports\CrystalEngine\exception_records.rpt	16384
CRADData\Reports\CrystalEngine\exception_summary.rpt	16384
CRADData\Reports\CrystalEngine\geocoding_exception.rpt	16384
CRADData\Reports\CrystalEngine\geocoding_statistics.rpt	32768
CRADData\Reports\CrystalEngine\History_analysis.rpt	12288
CRADData\Reports\CrystalEngine\H_DETAIL_2004.rpt	15872
CRADData\Reports\CrystalEngine\h_lar_report.rpt	16384
CRADData\Reports\CrystalEngine\h_lar_report_hmz4.rpt	32768
CRADData\Reports\CrystalEngine\lr_report.rpt	12800
CRADData\Reports\CrystalEngine\market_share.rpt	51712
CRADData\Reports\CrystalEngine\Micro_lr_report.rpt	12288
CRADData\Reports\CrystalEngine\SUBMISSION_LARDetailed.rpt	15360
CRADData\Reports\CrystalEngine\summary_change_history_by_date_report.rpt	10752
CRADData\Reports\CrystalEngine\summary_change_history_by_user_report.rpt	10752
CRADData\Reports\Images\analysis.jpg	9848
CRADData\Reports\Images\BrackDown_N.gif	418
CRADData\Reports\Images\BrackDown_RL.gif	418
CRADData\Reports\Images\Breakdown.gif	438
CRADData\Reports\Images\BreakDown_DW.gif	1449

CRADData\Reports\Images\Breakdown_Dw_Gif.gif	964
CRADData\Reports\Images\Breakdown_Dw_Gif_1.gif	950
CRADData\Reports\Images\BreakDown_UP.gif	761
CRADData\Reports\Images\Calculation_Dw_Gif.gif	1090
CRADData\Reports\Images\Calculation_N.gif	490
CRADData\Reports\Images\Calculation_RL.gif	596
CRADData\Reports\Images\Calculation_Up_Gif.gif	486
CRADData\Reports\Images\droparrow.jpg	4927
CRADData\Reports\Images\GenerateReport_N.jpg	6765
CRADData\Reports\Images\GenerateReport_RL.jpg	6908
CRADData\Reports\Images\go_button.jpg	6096
CRADData\Reports\Images\go_button2.jpg	6055
CRADData\Reports\Images\Lines_middle.jpg	5898
CRADData\Reports\Images\Line_Jpg.jpg	5066
CRADData\Reports\Images\M 2.GIF	570
CRADData\Reports\Images\m3.gif	415
CRADData\Reports\Images\m4.gif	360
CRADData\Reports\Images\M5.gif	408
CRADData\Reports\Images\M6.gif	378
CRADData\Reports\Images\masgeTool3.jpg	7322
CRADData\Reports\Images\masgeToolClick.GIF	1448
CRADData\Reports\Images\masgeToolNormal.GIF	1411
CRADData\Reports\Images\masgeToolOver.GIF	1447
CRADData\Reports\Images\masgeToolWab Report.psd	21209
CRADData\Reports\Images\MENU 1.GIF	533
CRADData\Reports\Images\PCiExporter.CAB	19781
CRADData\Reports\Images\Picture1.jpg	11277
CRADData\Reports\Images\reportAllDecrip.jpg	7930
CRADData\Reports\Images\report_menuDw_G.gif	445
CRADData\Reports\Images\repot_menuUp_G.gif	581
CRADData\Reports\Images\Screen_1.GIF	1238
CRADData\Reports\Images\SelectAnaly_Dw_Gif.gif	1559
CRADData\Reports\Images\SelectAnaly_Up_Gif.gif	4217
CRADData\Reports\Images\SelectAnasis_N.gif	630
CRADData\Reports\Images\SelectAnasis_RL.gif	781
CRADData\Reports\Images\Short_menuDw_G.gif	316

CRADData\Reports\Images\Short_menue_Up.gif	346
CRADData\Reports\Images\template5_05-over.gif	579
CRADData\Reports\Images\template5_05.gif	418
CRADData\Reports\Images\template5_06.gif	891
CRADData\Reports\Images\template5_07-over.gif	241
CRADData\Reports\Images\template5_07.gif	195
CRADData\Reports\Images\template5_09-over.gif	245
CRADData\Reports\Images\template5_09.gif	197
CRADData\Reports\Images\template5_12-template5_03_u.gif	6761
CRADData\Reports\Images\toolBarSTR.jpg	5204
CRADData\Reports\Images\toolBar_1 copy.jpg	5585
CRADData\Reports\Images\toolBar_1.jpg	7069
CRADData\Reports\Images\toolBar_22.jpg	5302
CRADes\COMMON.dll	280576
CRADes\CRA.exe	1585664
CRADes\CRA.exe.config	2920
CRADes\CRADES.chm	203211
CRADes\Encrypt.chm	19798
CRADes\Encryption Utility.exe	153088
CRADes\Encryption Utility.exe.config	2353
CRADes\GrapeCity.ActiveReports.Chart.v7.dll	2688000
CRADes\GrapeCity.ActiveReports.Design.Win.v7.dll	9619456
CRADes\GrapeCity.ActiveReports.Diagnostics.v7.dll	45056
CRADes\GrapeCity.ActiveReports.Document.v7.dll	501248
CRADes\GrapeCity.ActiveReports.Export.Image.Unsafe.v7.dll	8192
CRADes\GrapeCity.ActiveReports.Export.Image.v7.dll	227840
CRADes\GrapeCity.ActiveReports.Export.Pdf.v7.dll	6511616
CRADes\GrapeCity.ActiveReports.Export.Rdf.v7.dll	64000
CRADes\GrapeCity.ActiveReports.Export.Word.v7.dll	187392
CRADes\GrapeCity.ActiveReports.Extensibility.v7.dll	118784
CRADes\GrapeCity.ActiveReports.v7.dll	6152704
CRADes\GrapeCity.ActiveReports.Viewer.Win.v7.dll	2936832
CRADes\README.txt	1063
CRADes\System.Data.SqlServerCe.dll	465248
CRADes\System.Data.SqlServerCe.Entity.dll	239968
CRADes\Census\census15.sdf	5328896

CRADes\Data\template.sdf	131072
FairWiz\autodca.exe	3240952
FairWiz\autodch.exe	3240952
FairWiz\autodcm.exe	3240952
FairWiz\autodcr.exe	3240952
FairWiz\autodcs.exe	3240952
FairWiz\autodct.exe	3240952
FairWiz\autodm.exe	1066168
FairWiz\autodr.exe	4615416
FairWiz\autopca.exe	3202952
FairWiz\autopch.exe	3202952
FairWiz\autopcm.exe	3202952
FairWiz\autopcr.exe	3202952
FairWiz\autopcs.exe	3202952
FairWiz\autopct.exe	3202952
FairWiz\autoppr.exe	3766952
FairWiz\Calc_CSTAT.exe	26576
FairWiz\cfr.htm	2416
FairWiz\cfr_cons.htm	2753
FairWiz\cfr_smb.htm	2175
FairWiz\Config.fpw	133
FairWiz\consdca.exe	3075968
FairWiz\consdch.exe	3075968
FairWiz\consdcm.exe	3075968
FairWiz\consdcr.exe	3075968
FairWiz\consdcs.exe	3075968
FairWiz\consdct.exe	3075968
FairWiz\consdm.exe	1075208
FairWiz\consdr.exe	3775152
FairWiz\conspca.exe	3021368
FairWiz\conspch.exe	3021368
FairWiz\conspcm.exe	3021368
FairWiz\conspcr.exe	3021368
FairWiz\conspcs.exe	3021368
FairWiz\conspct.exe	3021368
FairWiz\conspr.exe	3587152

FairWiz\cstat.dll	2113024
FairWiz\dc_list.htm	4792
FairWiz\Decisioning Comparison Analysis by Age - AUTO.bat	47
FairWiz\Decisioning Comparison Analysis by Age - BUSI.bat	47
FairWiz\Decisioning Comparison Analysis by Age - CONS.bat	47
FairWiz\Decisioning Comparison Analysis by Age - HMZ4.bat	47
FairWiz\Decisioning Comparison Analysis by Applicant Income - AUTO.bat	47
FairWiz\Decisioning Comparison Analysis by Applicant Income - BUSI.bat	47
FairWiz\Decisioning Comparison Analysis by Applicant Income - CONS.bat	47
FairWiz\Decisioning Comparison Analysis by Applicant Income - HMZ4.bat	47
FairWiz\Decisioning Comparison Analysis by Marital Status - AUTO.bat	47
FairWiz\Decisioning Comparison Analysis by Marital Status - BUSI.bat	47
FairWiz\Decisioning Comparison Analysis by Marital Status - CONS.bat	47
FairWiz\Decisioning Comparison Analysis by Marital Status - HMZ4.bat	47
FairWiz\Decisioning Comparison Analysis by Race - AUTO.bat	47
FairWiz\Decisioning Comparison Analysis by Race - BUSI.bat	47
FairWiz\Decisioning Comparison Analysis by Race - CONS.bat	47
FairWiz\Decisioning Comparison Analysis by Race - HMZ4.bat	47
FairWiz\Decisioning Comparison Analysis by Sex - AUTO.bat	47
FairWiz\Decisioning Comparison Analysis by Sex - BUSI.bat	47
FairWiz\Decisioning Comparison Analysis by Sex - CONS.bat	47
FairWiz\Decisioning Comparison Analysis by Sex - HMZ4.bat	47
FairWiz\Decisioning Comparison Analysis by Tract Income - AUTO.bat	47
FairWiz\Decisioning Comparison Analysis by Tract Income - BUSI.bat	47
FairWiz\Decisioning Comparison Analysis by Tract Income - CONS.bat	47
FairWiz\Decisioning Comparison Analysis by Tract Income - HMZ4.bat	47
FairWiz\demog90.cdx	6669824
FairWiz\demog90.dbf	62060084
FairWiz\Difference of Means - AUTO.bat	46
FairWiz\Difference of Means - BUSI.bat	46
FairWiz\Difference of Means - CONS.bat	46
FairWiz\Difference of Means - HMZ4.bat	46
FairWiz\Extreme.Numerics.Net40.dll	4537808
FairWiz\fairwiz.ico	2238
FairWiz\FLW.ico	2238
FairWiz\flwiz4.ico	766

FairWiz\flw_cra.css	1682
FairWiz\focal.htm	2372
FairWiz\focalpoint.exe	761240
FairWiz\focal_new.htm	2476
FairWiz\Fox32.dbf	15785
FairWiz\fox32.FLL	69120
FairWiz\Fox32.fpt	344704
FairWiz\Foxstat3.fll	49152
FairWiz\Foxtools.fll	58530
FairWiz\FOXUSER.DBF	857
FairWiz\FOXUSER.FPT	4672
FairWiz\getlardata.exe	53600
FairWiz\Graphx.ocx	37376
FairWiz\hmdadca.exe	3172992
FairWiz\hmdadch.exe	3172992
FairWiz\hmdadcm.exe	3172992
FairWiz\hmdadcr.exe	3172992
FairWiz\hmdadcs.exe	3172992
FairWiz\hmdadct.exe	3172992
FairWiz\hmdadm.exe	1440528
FairWiz\hmdadr.exe	3912752
FairWiz\hmdapca.exe	3140856
FairWiz\hmdapch.exe	3140856
FairWiz\hmdapcm.exe	3140856
FairWiz\hmdapcr.exe	3140856
FairWiz\hmdapcs.exe	3140856
FairWiz\hmdapct.exe	3140856
FairWiz\hmdapr.exe	3649280
FairWiz\hmdaprc.exe	3025792
FairWiz\hmdata.exe	2371488
FairWiz\Microsoft.Practices.Composite.dll	76800
FairWiz\Microsoft.Practices.Composite.Presentation.dll	62464
FairWiz\Microsoft.Practices.Composite.UnityExtensions.dll	15360
FairWiz\Microsoft.Practices.EnterpriseLibrary.Common.dll	334648
FairWiz\Microsoft.Practices.EnterpriseLibrary.ExceptionHandling.dll	146232
FairWiz\Microsoft.Practices.EnterpriseLibrary.ExceptionHandling.Logging.dll	52024



FairWiz\Microsoft.Practices.EnterpriseLibrary.Logging.dll	502584
FairWiz\Microsoft.Practices.ServiceLocation.dll	27448
FairWiz\Microsoft.Practices.Unity.dll	133944
FairWiz\Microsoft.Practices.Unity.Interception.dll	125752
FairWiz\pc_list.htm	4764
FairWiz\polyGraphics.ocx	227840
FairWiz\Pricing Comparison Analysis by Age - AUTO.bat	47
FairWiz\Pricing Comparison Analysis by Age - CONS.bat	47
FairWiz\Pricing Comparison Analysis by Age - HMZ4.bat	47
FairWiz\Pricing Comparison Analysis by Applicant Income - AUTO.bat	47
FairWiz\Pricing Comparison Analysis by Applicant Income - CONS.bat	47
FairWiz\Pricing Comparison Analysis by Applicant Income - HMZ4.bat	47
FairWiz\Pricing Comparison Analysis by Marital Status - AUTO.bat	47
FairWiz\Pricing Comparison Analysis by Marital Status - CONS.bat	47
FairWiz\Pricing Comparison Analysis by Marital Status - HMZ4.bat	47
FairWiz\Pricing Comparison Analysis by Race - AUTO.bat	47
FairWiz\Pricing Comparison Analysis by Race - CONS.bat	47
FairWiz\Pricing Comparison Analysis by Race - HMZ4.bat	47
FairWiz\Pricing Comparison Analysis by Sex - AUTO.bat	47
FairWiz\Pricing Comparison Analysis by Sex - CONS.bat	47
FairWiz\Pricing Comparison Analysis by Sex - HMZ4.bat	47
FairWiz\Pricing Comparison Analysis by Tract Income - AUTO.bat	47
FairWiz\Pricing Comparison Analysis by Tract Income - CONS.bat	47
FairWiz\Pricing Comparison Analysis by Tract Income - HMZ4.bat	47
FairWiz\ra.htm	2812
FairWiz\ra_cons.htm	2373
FairWiz\ra_smb.htm	1873
FairWiz\reg.htm	2585
FairWiz\reg_smb.htm	2350
FairWiz\ReportBuilder.app	738603
FairWiz\ReportOutput.app	237236
FairWiz\ReportPreview.app	133838
FairWiz\rskanaly.exe	1735528
FairWiz\sbizdca.exe	3218208
FairWiz\sbizdch.exe	3218208
FairWiz\sbizdcm.exe	3218208

FairWiz\sbizdcr.exe	3218208
FairWiz\sbizdcs.exe	3218208
FairWiz\sbizdct.exe	3218208
FairWiz\sbizdm.exe	1075208
FairWiz\sbizdr.exe	3879160
FairWiz\Telerik.Windows.Controls.dll	2957824
FairWiz\Telerik.Windows.Controls.Input.dll	1788928
FairWiz\unavailable.htm	1873
FairWiz\updatecensusdb.exe	251136
FairWiz\USCENSUS.CDX	3760128
FairWiz\USCENSUS.DBF	78160311
FairWiz\usvar_regc2.DBF	110249
FairWiz\usvar_regc2.FPT	64000
FairWiz\vfpggraph.DBF	1157
FairWiz\vfpggraph.FPT	1455040
FairWiz\vgraph.DBF	328
FairWiz\WKFS.CRAWiz.CrossProcessUtility.dll	18896
FairWiz\WKFS.FLWiz.DAL.dll	26064
FairWiz\WKFS.FLWiz.Infrastructure.dll	65488
FairWiz\WKFS.FLWiz.ModelManager.dll	59344
FairWiz\WKFS.FLWiz.Module.ComparativeFileReview.dll	237008
FairWiz\WKFS.FLWiz.Module.ComparativeFileReview.dll.config	989
FairWiz\WKFS.FLWiz.MPW.exe	953808
FairWiz\WKFS.FLWiz.MPW.exe.config	3409
FairWiz\WKFS.FLWiz.Report.DAL.dll	26576
FairWiz\WKFS.FLWiz.Report.exe	210384
FairWiz\WKFS.FLWiz.Report.exe.config	3109
FairWiz\WKFS.FLWiz.Report.Model.dll	15824
FairWiz\WKFS.Wiz.Common.DAL.dll	25040
FairWiz\WKFS.Wiz.Context.dll	27600
FairWiz\WKFS.Wiz.Logging.dll	11728
FairWiz\WKFS.Wiz.WPFControls.dll	12752
FairWiz\WPFToolkit.dll	467288
FairWiz\WPFToolkit.Extended.dll	391680
FairWiz\Zdrvstat.fll	13407
FairWiz\ZIPPARAM.DBF	282

FairWiz\ZIPPARAM.FPT	768
FairWiz\ziptool.exe	68648
FairWiz\General\AUTOFORM.CDX	22016
FairWiz\General\autoform.DBF	41523
FairWiz\General\autolist.CDX	14848
FairWiz\General\autolist.DBF	112121
FairWiz\General\A_Codes.DBF	42841
FairWiz\General\batchlist.DBF	8521
FairWiz\General\BUSDEMOG.CDX	1254400
FairWiz\General\BUSDEMOG.DBF	36271141
FairWiz\General\Codes.dbf	42793
FairWiz\General\CONSFORM.CDX	4608
FairWiz\General\consform.DBF	5873
FairWiz\General\CONSLIST.DBF	33783
FairWiz\General\C_Codes.DBF	32105
FairWiz\General\factlist.CDX	15360
FairWiz\General\factlist.DBF	47640
FairWiz\General\flwhlpfl.chm	47940672
FairWiz\General\flwhlpfl.CNT	5940
FairWiz\General\hmdaform.CDX	15872
FairWiz\General\Hmdaform.dbf	48051
FairWiz\General\lplars.CDX	3072
FairWiz\General\lplars.dbf	161
FairWiz\General\lppsheets.dbf	2466
FairWiz\General\N_CODES.DBF	42793
FairWiz\General\Prglist.dbf	161
FairWiz\General\ProgFact.DBF	1201
FairWiz\General\programs.CDX	4608
FairWiz\General\PROGRAMS.DBF	786
FairWiz\General\Programs.FPT	1088
FairWiz\General\SBIZFORM.CDX	18432
FairWiz\General\sbizform.DBF	16575
FairWiz\General\SBIZLIST.DBF	54080
FairWiz\General\State.cdx	4608
FairWiz\General\State.dbf	436
FairWiz\General\STATFILT.DBF	426

FairWiz\General\s_codes.dbf	180946
FairWiz\General\Ud_flds.dbf	668
FairWiz\General\ud_vars_cra.dbf	1339
FairWiz\General\Usvar.dbf	106899
FairWiz\General\Usvar.fpt	52352
FairWiz\General\usvar_regc.DBF	102369
FairWiz\General\usvar_regc.FPT	62464
FairWiz\Manual\DAMANUAL.pdf	26654686
FairWiz\Manual\Geocoder.pdf	13849186
FairWiz\Manual\MAPPER.pdf	788997
FairWiz\Media\Images\cfr_header.gif	11828
FairWiz\Media\Images\cfr_icon.gif	1923
FairWiz\Media\Images\flw_crawiz_bottombar_bg.gif	55
FairWiz\Media\Images\flw_crawiz_bottombar_left.gif	152
FairWiz\Media\Images\flw_crawiz_menubar_bg.gif	57
FairWiz\Media\Images\fpr_header.gif	22427
FairWiz\Media\Images\generate_OFF.gif	488
FairWiz\Media\Images\generate_OVER.gif	481
FairWiz\Media\Images\go.gif	893
FairWiz\Media\Images\go_OVER.gif	942
FairWiz\Media\Images\header2.gif	106
FairWiz\Media\Images\header_bg.gif	53
FairWiz\Media\Images\ra_header.gif	9816
FairWiz\Media\Images\ra_icon.gif	1661
FairWiz\Media\Images\reg_header.gif	11892
FairWiz\Media\Images\reg_icon.gif	1572
FairWiz\Reports\ComparatorApplicantList.rdlc	69173
FairWiz\Reports\Data_Quality_Report.rdlc	115369
FairWiz\Reports\Examiner Worksheet A.rdlc	1153249
FairWiz\Reports\FLW Marketing Risk Factor M6 Report.rdlc	173766
FairWiz\Reports\FLW Risk Analysis DM Report.rdlc	160016
FairWiz\Reports\FLW Risk Analysis P4 Report.rdlc	152419
FairWiz\Reports\FLW Risk Analysis R1 Report.rdlc	134421
FairWiz\Reports\FLW Risk Analysis R2 Report.rdlc	153695
FairWiz\Reports\FLW Risk Analysis R3 Report.rdlc	116511
FairWiz\Reports\FLW Risk Analysis S3 Report.rdlc	140509

FairWiz\Reports\FLW Risk Analysis U1 or U7 Report.rdlc	154396
FairWiz\Reports\FLW Risk Analysis U2 Report.rdlc	152306
FairWiz\Reports\FLW Risk Analysis U3 Report.rdlc	116124
FairWiz\Reports\Focal Point Report.rdlc	289806
FairWiz\Reports\HMDA Underwriting and Pricing Analysis.rdlc	200059
FairWiz\Reports\K2_Detail Record Exceptions.rdlc	155111
FairWiz\Reports\K2_Geocode Exception.rdlc	72417
FairWiz\Reports\K2_Record_Level_Exceptions.rdlc	45358
FairWiz\Reports\K2_StndSummaryRpt.rdlc	145508
FairWiz\Reports\K2_Summary_Error_Report.rdlc	64750
FairWiz\Reports\Loan Application Register K2 HMZ4.rdlc	224130
FairWiz\Reports\ModelSpecificationsReport.rdlc	62565
FairWiz\Reports\PLL_CorrespondentTransactionDetails.rdlc	100490
FairWiz\Reports\PLL_CorrespondentTransactionSummary.rdlc	46778
FairWiz\Reports\PLL_Geocode Exception.rdlc	38127
FairWiz\Reports\PLL_TransactionReport.rdlc	66331
FairWiz\Reports\PLL_UserList.rdlc	28262
FairWiz\Reports\Pricing Summary.rdlc	205309
FairWiz\Reports\ProtectedApplicant.rdlc	63481
FairWiz\Reports\Standard Summary Report.rdlc	171575
FairWiz\Reports\Summary Report - Action Taken.rdlc	238132
Help\CRA Wiz Help.chm	125433445
Help\flwhlpfl.chm	47940672
Help\Wiz 6.0 Online Help.chm	4644436
HMDADes\BRSHelp.chm	50948
HMDADes\COMMON.dll	280576
HMDADes\Encryp.chm	21950
HMDADes\Encryption Utility.exe	153088
HMDADes\Encryption Utility.exe.config	2353
HMDADes\GrapeCity.ActiveReports.Chart.v7.dll	2688000
HMDADes\GrapeCity.ActiveReports.Design.Win.v7.dll	9619456
HMDADes\GrapeCity.ActiveReports.Diagnostics.v7.dll	45056
HMDADes\GrapeCity.ActiveReports.Document.v7.dll	501248
HMDADes\GrapeCity.ActiveReports.Export.Image.Unsafe.v7.dll	8192
HMDADes\GrapeCity.ActiveReports.Export.Image.v7.dll	227840
HMDADes\GrapeCity.ActiveReports.Export.Pdf.v7.dll	6511616

HMDADes\GrapeCity.ActiveReports.Export.Rdf.v7.dll	64000
HMDADes\GrapeCity.ActiveReports.Export.Word.v7.dll	187392
HMDADes\GrapeCity.ActiveReports.Extensibility.v7.dll	118784
HMDADes\GrapeCity.ActiveReports.v7.dll	6152704
HMDADes\GrapeCity.ActiveReports.Viewer.Win.v7.dll	2936832
HMDADes\HMDA.exe	1397760
HMDADes\HMDA.exe.config	3416
HMDADes\HMDADES.chm	226684
HMDADes\README.txt	1494
HMDADes\SecuritiesTable.sdf	98304
HMDADes\System.Data.SqlServerCe.dll	465248
HMDADes\System.Data.SqlServerCe.Entity.dll	239968
HMDADes\Census\census15.sdf	5414912
HMDADes\Data\template.sdf	81920
HTML\ExportDefImage.jpg	1873
HTML\ExportFormatPrint.htm	708
HTML\ExportFormatPrint.xsl	6847
HTML\ImportFormatPrint.htm	734
HTML\ImportFormatPrint.xsl	11030
HTML\Show Export Format.xsl	2044
NewDashboard\back.gif	201
NewDashboard\back_greyout.gif	233
NewDashboard\back_over.gif	277
NewDashboard\back_press.gif	272
NewDashboard\black_dot.gif	49
NewDashboard\bottom_frame.gif	49
NewDashboard\bullet.gif	67
NewDashboard\Button.htc	1350
NewDashboard\button1.swf	3409
NewDashboard\cancel.gif	183
NewDashboard\cancel_greyout.gif	243
NewDashboard\cancel_over.gif	258
NewDashboard\cancel_press.gif	257
NewDashboard\checkbox_checked.gif	85
NewDashboard\checkbox_unchecked.gif	74
NewDashboard\ComboBox.htc	2752

NewDashboard\contract.gif	64
NewDashboard\dummy.gif	43
NewDashboard\Event Scheduler Import file.gif	53801
NewDashboard\event.gif	393
NewDashboard\EventScheduler.htm	6647
NewDashboard\event_scheduler.gif	19357
NewDashboard\event_scheduler_left_header.gif	7361
NewDashboard\executing event.gif	393
NewDashboard\expand.gif	67
NewDashboard\failed event.gif	387
NewDashboard\Finish.gif	197
NewDashboard\Finish_greyout.gif	219
NewDashboard\Finish_over.gif	267
NewDashboard\Finish_press.gif	264
NewDashboard\header_left.gif	11638
NewDashboard\header_middle.gif	56
NewDashboard\header_right.gif	964
NewDashboard\left_frame.gif	115
NewDashboard\middle_frame.gif	54
NewDashboard\next.gif	198
NewDashboard\next_greyout.gif	231
NewDashboard\next_over.gif	271
NewDashboard\next_press.gif	272
NewDashboard\PopupMenu.htc	3978
NewDashboard\right_frame.gif	84
NewDashboard\Sample.htm	9120
NewDashboard\Scheduler.gif	386
NewDashboard\select_box.gif	101
NewDashboard\select_box_over.gif	104
NewDashboard\select_box_press.gif	104
NewDashboard\stripe.gif	56
NewDashboard\successful event.gif	397
NewDashboard\TheWizDashboard.htm	7975
NewDashboard\TheWizTaskSchedulerConstants.js	3951
NewDashboard\TheWizTaskWizard.htm	13563
NewDashboard\TheWizTaskWizardBatchReportParameters.htm	8661

NewDashboard\TheWizTaskWizardExportParameters.htm	4150
NewDashboard\TheWizTaskWizardGeocodeParameters.htm	4517
NewDashboard\TheWizTaskWizardImportParameters.htm	10599
NewDashboard\TheWizTaskWizardStep1.htm	18813
NewDashboard\TheWizTaskWizardStep2.htm	3635
NewDashboard\TheWizTaskWizardStep3.htm	2721
NewDashboard\top_frame.gif	50
NewDashboard\TreeView.htc	12092
NewDashboard\TreeView.htm	3548
NewDashboard\TreeView_5.htc	10190
NewDashboard\TreeView_7.htc	13761
NewDashboard\UIElement.css	2298
NewDashboard\UIManager.js	11924
NewDashboard\white_arrow.gif	111
NewDashboard\Main\leftFrame.html	3166
NewDashboard\Main\logo.jpg	6185
NewDashboard\Main\Main.htm	1011
NewDashboard\Main\rightFrameTemplate.html	2596
NewDashboard\Main\webcenter.css	817
NewDashboard\Main\webcenter_BG.png	320
NewDashboard\Main\webcenter_BULLET.png	208
NewDashboard\Main\WebMain.htm	1683
NewDashboard\Main\welcome.css	818
NewDashboard\Main\welcome_BG.png	296
NewDashboard\Main\welcome_BULLET.png	208
NewDashboard\Main\wkfs_LOGO.png	9571
NewDashboard\Main\Media\fl_image.gif	3897
Reports\ComparatorApplicantList.rdlc	69173
Reports\Data_Quality_Report.rdlc	115369
Reports\Examiner Worksheet A.rdlc	1153249
Reports\FLW Marketing Risk Factor M6 Report.rdlc	173766
Reports\FLW Risk Analysis DM Report.rdlc	160016
Reports\FLW Risk Analysis P4 Report.rdlc	152419
Reports\FLW Risk Analysis R1 Report.rdlc	134421
Reports\FLW Risk Analysis R2 Report.rdlc	153695
Reports\FLW Risk Analysis R3 Report.rdlc	116511



Reports\FLW Risk Analysis S3 Report.rdlc	140509
Reports\FLW Risk Analysis U1 or U7 Report.rdlc	154396
Reports\FLW Risk Analysis U2 Report.rdlc	152306
Reports\FLW Risk Analysis U3 Report.rdlc	116124
Reports\Focal Point Report.rdlc	289806
Reports\HMDA Underwriting and Pricing Analysis.rdlc	200059
Reports\K2_Detail Record Exceptions.rdlc	155111
Reports\K2_Geocode Exception.rdlc	72417
Reports\K2_Record_Level_Exceptions.rdlc	45358
Reports\K2_StdSummaryRpt.rdlc	145508
Reports\K2_Summary_Error_Report.rdlc	64750
Reports\Loan Application Register K2 HMZ4.rdlc	224130
Reports\PLL_CorrespondentTransactionDetails.rdlc	100490
Reports\PLL_CorrespondentTransactionSummary.rdlc	46778
Reports\PLL_Geocode Exception.rdlc	38127
Reports\PLL_TransactionReport.rdlc	66331
Reports\PLL_UserList.rdlc	28262
Reports\Pricing Summary.rdlc	205309
Reports\ProtectedApplicant.rdlc	63481
Reports\Standard Summary Report.rdlc	171575
Reports\Summary Report - Action Taken.rdlc	238132
Training\Source\Branches.dat	2525
Training\Source\Branches.XLS	32768
Training\Source\Consumer Analysis File 2000.dbf	794558
Training\Source\CRA Analysis File 2000.dbf	240718
Training\Source\HMDA Analysis File 2000.dbf	2025738
Training\Source\hmda03.dat	469260
Training\Source\Hmda98.dat	118816
Training\Source\RantaBank_Mar.csv	150111
Training\Source\RantaBank_Mar.xls	526848
Training\Source\schema.ini	92
Training\Source\SSB Branches as prn.txt	3720
Training\Source\SSB Branches.adtg	5696
Training\Source\SSB Branches.dat	15912
Training\Source\SSB Branches.dbf	4818
Training\Source\SSB February small.dbf	23902

Training\Source\SSB February.dbf	126414
Training\Source\SSB January Modified.dbf	132042
Training\Source\SSB January.dbf	138834
Training\Source\SSB Monthly.adtg	6672
Training\Source\SSB_Branches.xls	7814
Training\Source\Velo Bank 2004 HMDA Analysis.dat	281273
Training\Source\Velo Bank 2004 HMDA Final.dat	293695
Training\Source\Velo Bank CRA 2004 Final.dat	111352
Training\Source\Velo Mortgage Feb.TXT	174451
Training\Source\Velo Mortgage Jan.TXT	203948
Training\Source\Velo Mortgage Mar.TXT	180667
Training\Source\Velo Small Bus.txt	27142
WebMap\Unlicensed Web Map Image.jpg	96135



**About Wolters Kluwer Financial Services** - Wolters Kluwer Financial Services provides audit, risk and compliance solutions that help financial organizations improve efficiency and effectiveness across their enterprise. Whether complying with regulatory requirements, addressing a single key risk, or working toward a holistic risk management strategy, more than 15,000 customers worldwide count on Wolters Kluwer Financial Services for a comprehensive and dynamic view of risk management and compliance. With more than 30 offices in over 20 countries, the company's prominent brands include: FRSGlobal, ARC Logics for Financial Services, PCI, Bankers Systems, VMP® Mortgage Solutions, AppOne®, GainsKeeper®, Capital Changes, NILS, AuthenticWeb™ and Uniform Forms™. Wolters Kluwer Financial Services is part of Wolters Kluwer, a leading global information services and publishing company with annual revenues of (2011) €3.4 billion (\$4.7 billion) and approximately 19,000 employees worldwide. Please visit our website for more information.

**Wolters Kluwer Financial Services**  
130 Turner Street  
Building 3, 4th Floor  
Waltham, MA 02453

800.261.3111