



Consumer Compliance Solutions

# CRA *Wiz* and Fair Lending *Wiz* 7.0

*Installation Instructions - UPDATE Installation*

Last Updated October 28, 2014

## Table of Contents

Table of Contents .....	2
Overview .....	3
Who Should Install .....	3
Where to Install.....	3
Prerequisites .....	3
Required Permissions.....	3
Required Free Disk Space.....	3
Approximate Install Time.....	3
Confirming Installation.....	4
Installation .....	5
Appendix A: List of Modified Files.....	14

## Overview

CRA *Wiz* and Fair Lending *Wiz* 7.0 is this year's Submission update and is required for the submission of 2014 HMDA and CRA data. This document provides detailed information for **upgrading** your environment from Version 6.9 to 7.0.

## Who Should Install

All clients using CRA *Wiz* for HMDA or CRA data submission are required to complete this update prior to submission.

## Where to Install

This update should be applied to both the application and the SQL server. In a typical networked environment, the installation should be run on both a client machine and a server.

## Prerequisites

CRA *Wiz* and Fair Lending *Wiz* Version 6.9 is required to install Version 7.0 as an upgrade. In CRA *Wiz* and Fair Lending *Wiz*, go to **Help > About CRA *Wiz*** and view the build number. Builds beginning with "69." are acceptable.

## Required Permissions

This installation requires writing and modification, SQL server access, and registry modifications. Wolters Kluwer Financial Services recommends that the user running the install have both **Windows admin** and **SQL Server admin** login credentials.

## Required Free Disk Space

Client side - **2 GB**

Server side - **17 GB** (Data folder - 12 GB, Log folder - 2.5 GB, %temp% folder - 2.5GB)

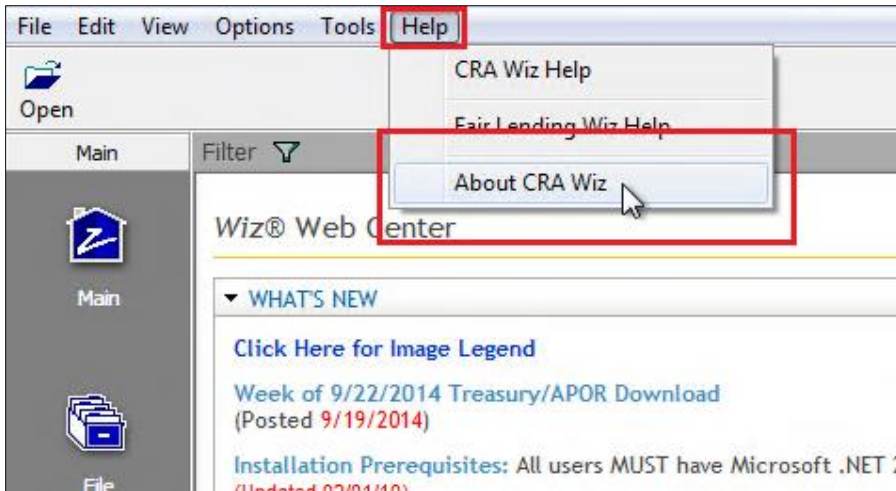
## Approximate Install Time

Client side - **10 to 20 minutes**

Server side - **1 hour**

## Confirming Installation

Open the CRA Wiz and Fair Lending Wiz application and select **Help > About CRA Wiz**:



When the upgrade has been completed, both the front and the back end builds should be **70.0.60**:



### Important!

Please read the included **Release Notes** before installing this update. The notes contain important information about the enhancements included in this update

### Important!

If you are running CRA Wiz and Fair Lending Wiz in a networked environment (computers with Wiz Client connected to a computer with Wiz Server), you must install the 7.0 update on both your Wiz Client and Wiz Server computers.

## Installation

To install CRA Wiz and Fair Lending Wiz 7.0, follow these steps:

1. Close CRA Wiz and ensure TheWiz6.exe is not running.
2. Back up your SQL databases.

Wolters Kluwer Financial Services recommends that institutions back up their SQL databases prior to installing a CRA Wiz & Fair Lending Wiz program update. Databases that should be backed up include:

- ObjectStore
- General
- USCensus
- CRB
- Procedure
- All Wiz\_# databases

For detailed instructions how to back up a database refer to **Procedures for Backing Up CRA Wiz & Fair Lending Wiz Databases**, available on the **CRA Wiz and Fair Lending Wiz Web Center** at:

[www.pcdownloads.com/CRAWiz/Documents/DatabaseBackupProcedures.pdf](http://www.pcdownloads.com/CRAWiz/Documents/DatabaseBackupProcedures.pdf)

Or consult your Database Administrator.

### Important!

It is strongly recommended that you exit all Windows™ programs before running this installation. This installation updates selected program files, but does not overwrite any user imported files or custom settings created in prior versions.

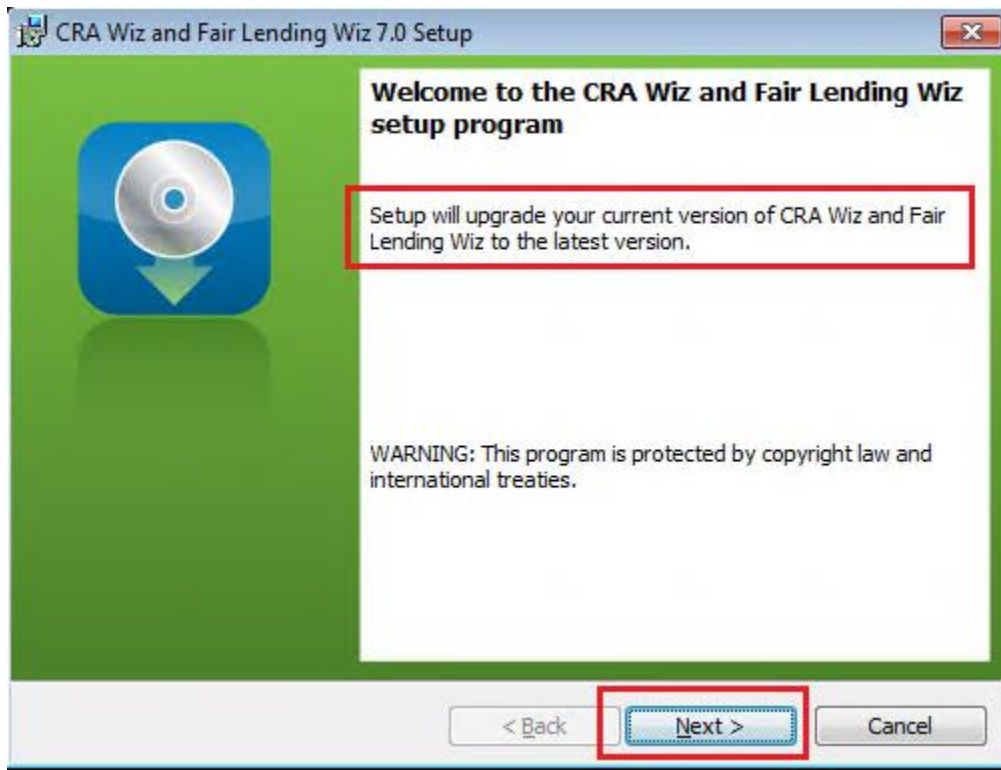
3. Insert your CRA Wiz and Fair Lending Wiz 7.0 DVD.
4. Select **Start > Run**.
5. Type d:\setup in the Run dialog box where **d:** is the letter of your DVD-ROM drive.

### Note:

If necessary, substitute the letter designating your DVD-ROM drive.

6. Click the **OK** button.

The software displays the **Welcome** screen:



**Note:**

The Welcome screen text indicates that you are about to update the current version of CRA Wiz and Fair Lending Wiz (6.9 SP1) to 7.0. If the installer does not detect your current installation of CRA Wiz and Fair Lending Wiz, please contact **Wolters Kluwer Financial Services Technical Support at 1-800-261-3111**. When prompted, select option 1.

7. Click the **Next** button.

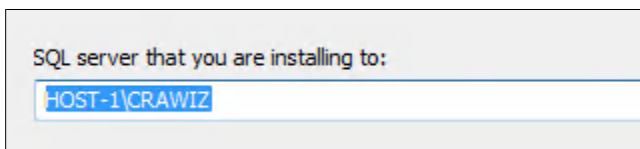
The software displays the **SQL Server Name** screen:



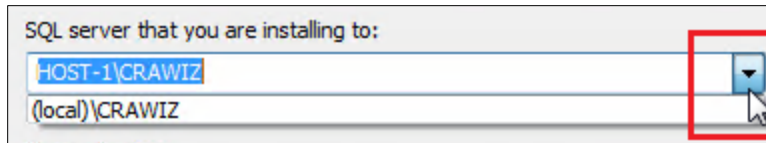
**Note:**

The software displays the SQL Server Login screen only if the computer on which you are installing the 7.0 update is running **SQL Server**. If the installer does not detect SQL Server on your computer, the installer displays the **Ready to Install the Program** screen. **Skip to Step 12.**

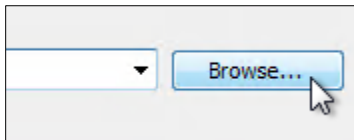
8. In the **SQL server that you are installing to:** field, do one of the following:
  - Enter the name of the SQL Server to which you are installing the data:



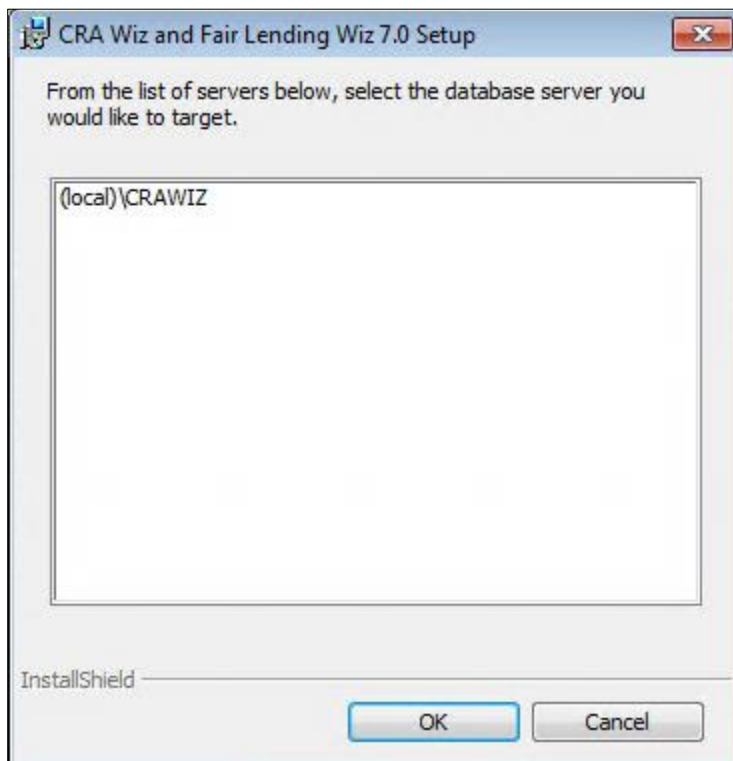
- Click the drop-down arrow located at the end of the field to select the Database server from a menu list:



- Click the **Browse** button:



Then select the database server from the resultant dialog box:



9. Choose one of the following authentication options:

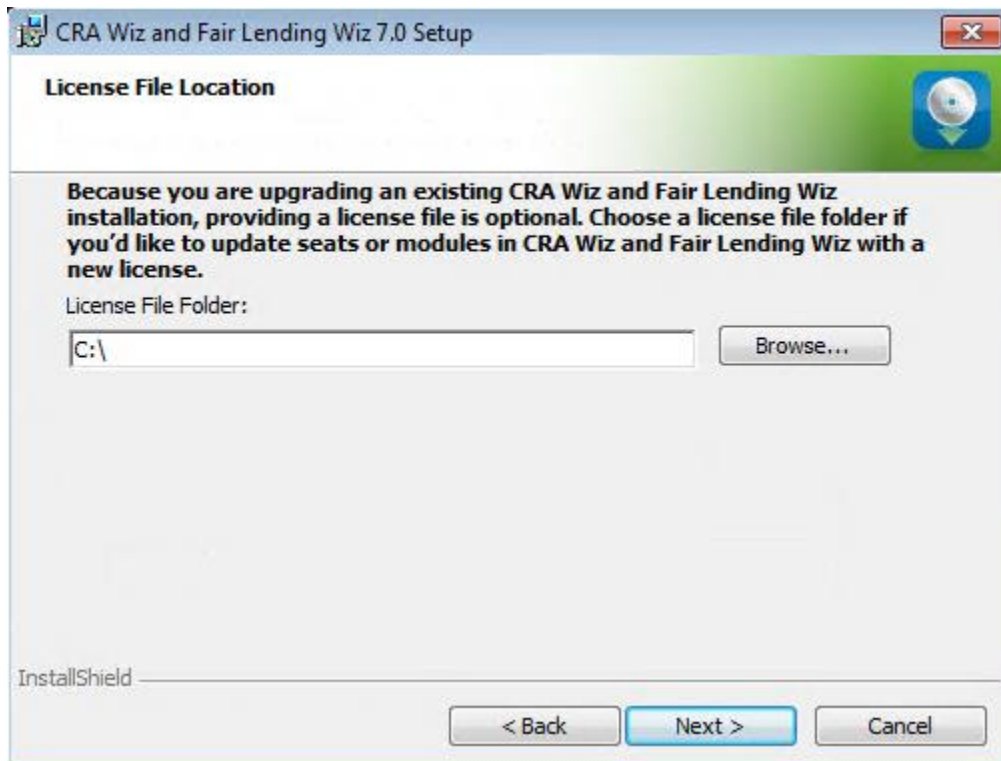
- **Use Windows Authentication**



- **Use SQL Server Authentication** - If you select this option, you must also enter your SQL Server account User Name and Password in the **User Name** and **Password** fields.

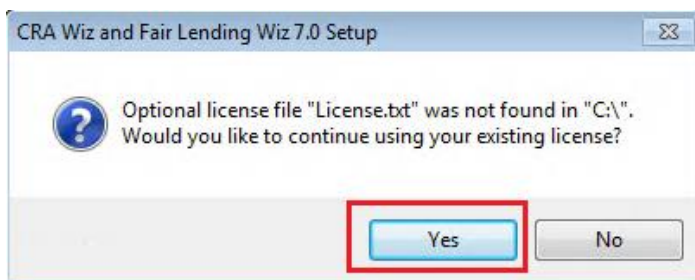
10. Click the **Next** button.

The software displays the **License File Location** screen:



11. Do one of the following:

- If you do **not** have a new license, click the **Next** button. The software displays a confirmation dialog box:

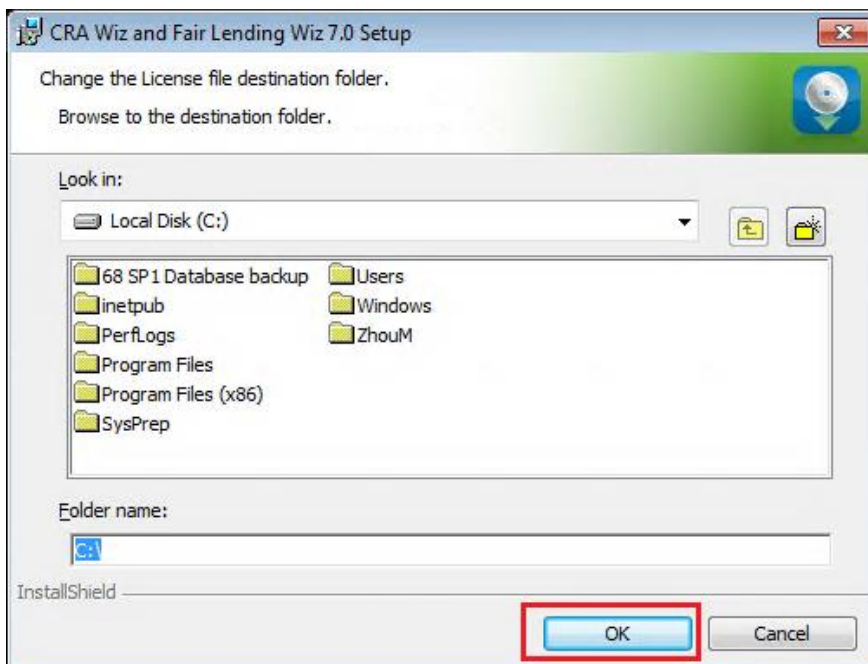


Click the **Yes** button.

- If you **do** have a new license, click the **Browse** button:

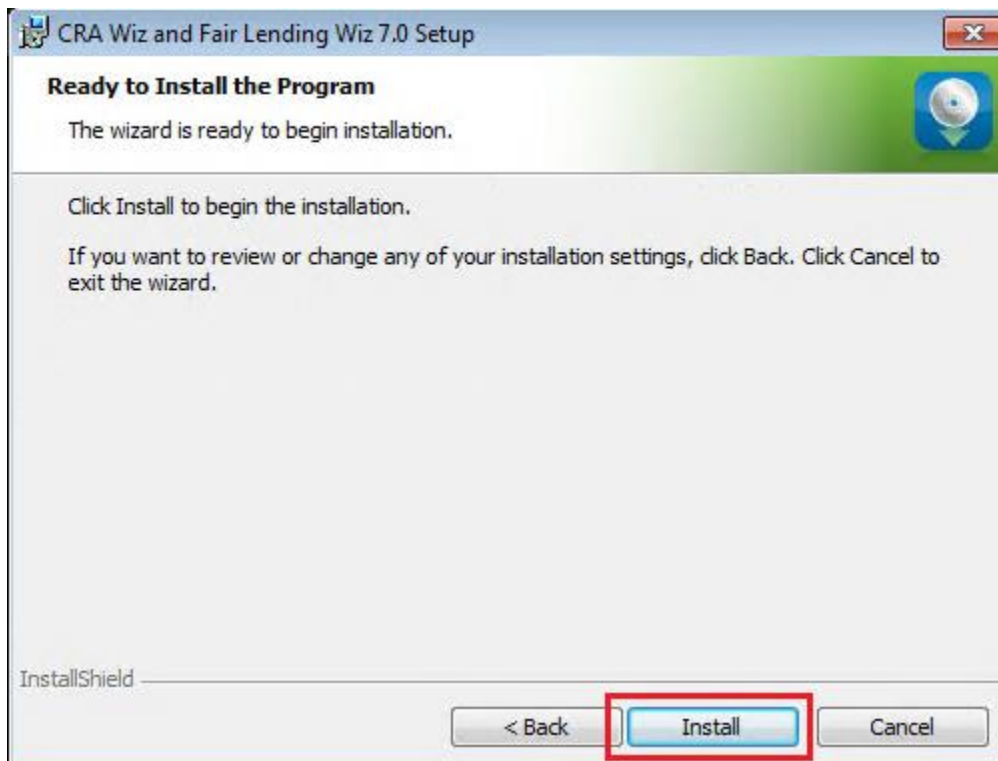


Then use the resultant dialog box to navigate to and select your license file (either a local or network location), then click the **OK** button:



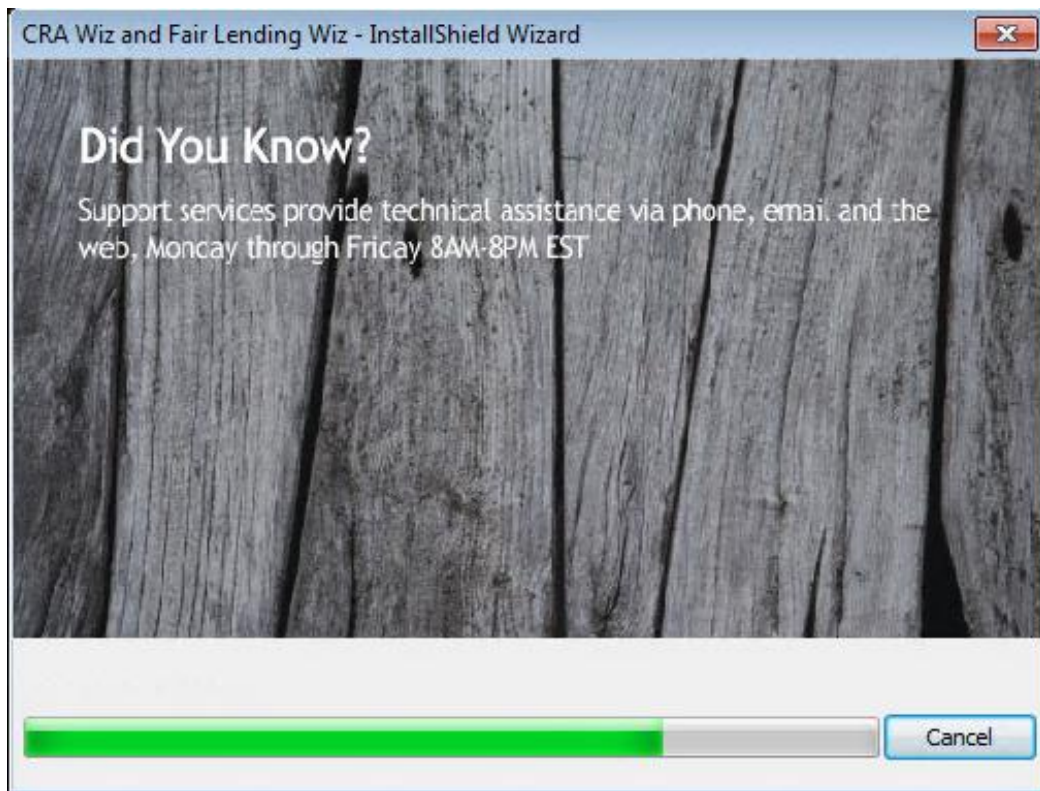
12. In the License File Location screen, click the **Next** button.

The software displays the **Ready to Install the Program** screen:



13. Click the **Install** button.

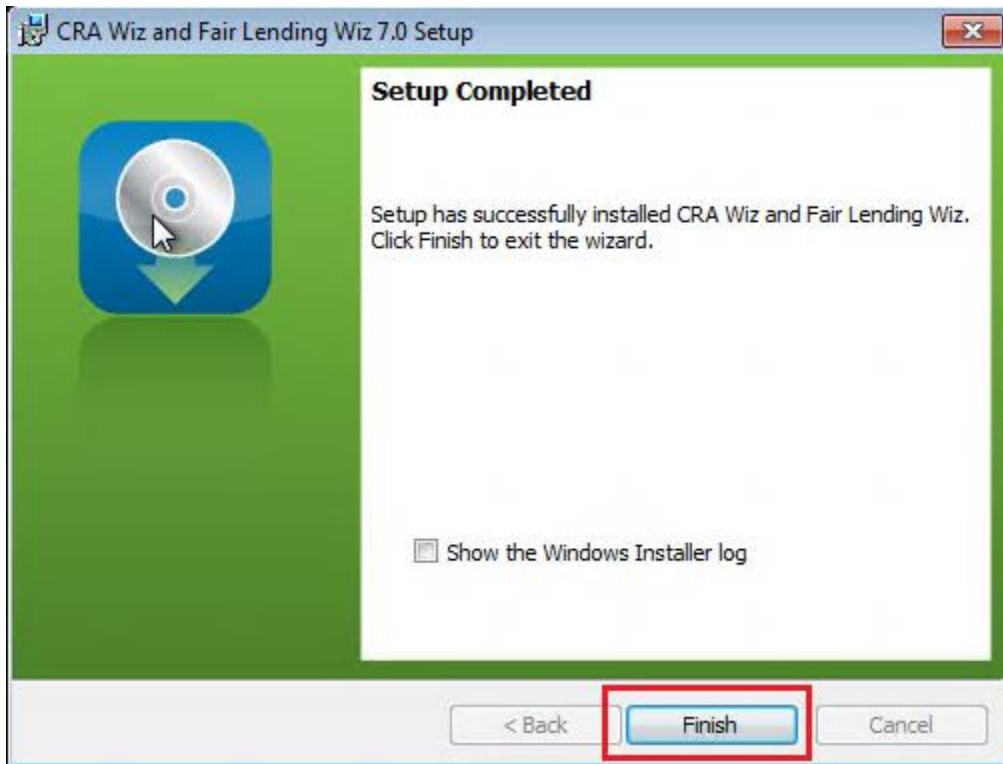
The installer runs the update:



**Note:**

During installation the software displays a progress bar at the bottom of the installer window.

When installation is complete, the installer displays the **Update Complete** screen:



14. To exit the installation, click the **Finish** button.

Installation is complete.

**Important!**

Wolters Kluwer Financial Services recommends restarting your computer after installation is complete.

## Appendix A: List of Modified Files

The following appendix contains a list of files that are modified by the CRA Wiz and Fair Lending Wiz 7.0 installation.

File	Size	Version
batch.avi	214	
CRAWiz3.RES	1	
CRAWizConnector.dll	20	70.0.60.0
ct.ini	0	
errconfig.xml	0	
ErrorReport.exe	74	70.0.0.60
geo.ini	0	
GeoBatch.exe	126	70.0.0.60
GeoTract.exe	82	70.0.0.60
Interop.Shell32.dll	52	1.0.0.0
map.ini	0	
Microsoft.ApplicationBlocks.Data.dll	40	2.0.0.0
PCiMapUtil.exe	50	70.0.0.60
PCiOutgeoTool.exe	118	70.0.0.60
publish.avi	9	
TheWiz6.exe	18226	70.0.0.60
WKFS.Wiz.AutoUpdater.exe	96	1.0.0.1
WKFS.Wiz.AutoUpdater.exe.config	1	
Bin\ComboListEx.ocx	172	1.0.0.1
Bin\CRInteface.dll	78	70.0.0.60
Bin\CustomLarReportManager.dll	74	70.0.0.60
Bin\dbdal.dll	82	70.0.0.60
Bin\dunzip32.dll	136	5.0.0.2
Bin\duzactx.dll	256	5.0.0.2
Bin\DUZOXC32.OCX	70	1.0.0.6
Bin\dzactx.dll	244	4.0.0.4
Bin\dzzip32.dll	164	5.0.0.2
Bin\dzocx32.ocx	72	1.0.0.6
Bin\dzstactx.dll	68	4.0.0.4
Bin\DZSTAT32.OCX	42	1.0.0.5
Bin\dz_ez32.dll	48	4.0.0.4

File	Size	Version
Bin\FlatEx.dll	40	1.0.0.5
Bin\GenericControls.ocx	432	1.1.0.3
Bin\GeoUtil.dll	38	70.0.0.60
Bin\GeoSetting.ocx	86	70.0.0.60
Bin>ListBarEx.ocx	278	70.0.0.60
Bin\PCiCannedImport.dll	722	70.0.0.60
Bin\PCiCommonDlg.ocx	278	70.0.0.60
Bin\PCiCustomReportDesigner.ocx	370	70.0.0.60
Bin\PCiCustomReportManager.dll	162	70.0.0.60
Bin\PCiDataAuditManager.dll	54	70.0.0.60
Bin\PCiEncryption.dll	34	70.0.0.60
Bin\PCiExportEngine.dll	382	70.0.0.60
Bin\PCiExporter.ocx	46	70.0.0.60
Bin\PCiGeoB.ocx	162	70.0.0.60
Bin\PCiGeol.ocx	350	70.0.0.60
Bin\PCiGeoWSConsumer.dll	70	70.0.0.60
Bin\PCiLARTreeMan.dll	138	70.0.0.60
Bin\PCiMap.ocx	2626	70.0.0.60
Bin\PCiModifyStructure.dll	58	70.0.0.60
Bin\PCiOutsourcer.dll	242	70.0.0.60
Bin\PCiSecurity.dll	154	70.0.0.60
Bin\PCiSubmissionService.dll	56	1.1.0.2
Bin\PCiTabPersistence.dll	74	70.0.0.60
Bin\PCiTaskScheduler.dll	250	70.0.0.60
Bin\PCiTextProvider.dll	42	70.0.0.60
Bin\PCiWB.ocx	414	70.0.0.60
Bin\PCiWBService.dll	34	70.0.0.60
Bin\PCiWebService.dll	62	70.0.0.60
Bin\PCiWebUIFramework.dll	154	70.0.0.60
Bin\PCiWizGeo2.dll	50	70.0.0.60
Bin\PCiXFormService.dll	32	1.0.0.0
Bin\PCiXTab.ocx	730	70.0.0.60
Bin\prjDataXferAgent.dll	202	70.0.0.60
Bin\RATAExportImport.dll	30	70.0.0.60
Bin\ScheduleLib.dll	262	

File	Size	Version
Bin\SubClass.dll	40	1.0.0.19
Bin\SubClassX.dll	40	1.0.0.23
Bin\VBLibraryX.dll	102	70.0.0.60
Bin\vbzip10.dll	144	1.1.0.0
Bin\WKFS.WebMap.Services.dll	27	1.0.0.15
Bin\WKFS.WebMap.Services.tlb	4	
Bin\WKFS.Wiz.Common.DAL.dll	18	1.0.0.15
Bin\WKFS.Wiz.WebMap.Client.dll	28	1.0.0.15
Bin\WKFS.Wiz.WebMap.Client.tlb	12	
CRADData\Deposit.xls	14	
CRADData\edit.xml	1	
CRADData\EditGUI.dat	10	
CRADData\EditGUI.xml	15	
CRADData\flwreports.xml	94	
CRADData\FunctionList.mdb	620	
CRADData\H_Lar_Report_HMZ4.xls	77	
CRADData\LocalInfo.mdb	372	
CRADData\reports.xml	851	
CRADData\Repository.mdb	452	
CRADData\wait.gif	4	
CRADData\Wait.htm	3	
CRADData\Custom Table\ct.ini	0	
CRADData\Custom Table\Templates\Default.css	1	
CRADData\Custom Table\Templates\Template 1.css	2	
CRADData\Demog Publish\Assessment_area_indepth1_formula.xml	1	
CRADData\Demog Publish\Assessment_area_indepth2_formula.xml	1	
CRADData\Demog Publish\Assessment_area_indepth3_formula.xml	1	
CRADData\Demog Publish\Assessment_area_indepth4_formula.xml	1	
CRADData\Demog Publish\Assessment_area_indepth5_formula.xml	1	
CRADData\Demog Publish\Assessment_area_indepth6_formula.xml	1	
CRADData\Demog Publish\Assessment_area_indepth7_formula.xml	1	
CRADData\Demog Publish\Assessment_area_indepth8_formula.xml	0	
CRADData\Demog Publish\DemogReport_index.htm	68	
CRADData\Demog Publish\demog_bus.htm	41	
CRADData\Demog Publish\demog_bus_2.htm	32	



File	Size	Version
CRADData\Demog Publish\demog_bus_2_formula.xml	2	
CRADData\Demog Publish\demog_bus_3.htm	29	
CRADData\Demog Publish\demog_bus_3_formula.xml	2	
CRADData\Demog Publish\demog_data_summary1_formula.xml	1	
CRADData\Demog Publish\demog_data_summary2_formula.xml	1	
CRADData\Demog Publish\demog_data_summary3_formula.xml	1	
CRADData\Demog Publish\demog_data_summary4_formula.xml	1	
CRADData\Demog Publish\demog_data_summary5_formula.xml	0	
CRADData\Demog Publish\demog_data_summary6_formula.xml	0	
CRADData\Demog Publish\demog_data_summary7_formula.xml	1	
CRADData\Demog Publish\demog_proj_1.htm	52	
CRADData\Demog Publish\demog_proj_2.htm	48	
CRADData\Demog Publish\demog_proj_3.htm	49	
CRADData\Demog Publish\demog_proj_4.htm	46	
CRADData\Demog Publish\Demog_US.htm	70	
CRADData\Demog Publish\Demog_US_1.htm	71	
CRADData\Demog Publish\Demog_US_2.htm	47	
CRADData\Demog Publish\Demog_US_3.htm	44	
CRADData\Demog Publish\Demog_US_4.htm	40	
CRADData\Demog Publish\ExaminerWorksheet B2_formula.xml	1	
CRADData\Demog Publish\ExaminerWorksheet B2_formula2.xml	0	
CRADData\Demog Publish\ExaminerWorksheet B2_formula3.xml	0	
CRADData\Demog Publish\ExaminerWorksheet B2_formula4.xml	1	
CRADData\Demog Publish\ExaminerWorksheet B2_formula5.xml	3	
CRADData\Demog Publish\Examiner_worksheet_c1_formula.xml	2	
CRADData\Demog Publish\Examiner_worksheet_c2_formula.xml	0	
CRADData\Demog Publish\Examiner_worksheet_c3_formula.xml	3	
CRADData\Demog Publish\Examiner_worksheet_c4_formula.xml	0	
CRADData\Demog Publish\Examiner_worksheet_Demog1_formula.xml	2	
CRADData\Demog Publish\Examiner_worksheet_Demog2_formula.xml	0	
CRADData\Demog Publish\Examiner_worksheet_Demog3_formula.xml	3	
CRADData\Demog Publish\Examiner_worksheet_Demog4_formula.xml	0	
CRADData\Demog Publish\genMove.js	3	
CRADData\Demog Publish\Headerdemog_bus_formula.xml	1	
CRADData\Demog Publish\Headerdemog_proj_2_formula.xml	1	

File	Size	Version
CRADData\Demog Publish\Headerdemog_proj_3_formula.xml	1	
CRADData\Demog Publish\Headerdemog_proj_4_formula.xml	1	
CRADData\Demog Publish\HeaderDemog_US_2_formula.xml	0	
CRADData\Demog Publish\HeaderDemog_US_3_formula.xml	1	
CRADData\Demog Publish\HeaderDemog_US_4_formula.xml	1	
CRADData\Demog Publish\HeaderDemog_US_formula.xml	1	
CRADData\Demog Publish\HeaderwkshtC1_formula.xml	0	
CRADData\Demog Publish\HeaderwkshtC2_formula.xml	0	
CRADData\Demog Publish\HeaderwkshtC3_formula.xml	0	
CRADData\Demog Publish\MainModule.js	91	
CRADData\Demog Publish\Projected_demog1_formula.xml	7	
CRADData\Demog Publish\Projected_demog2_formula.xml	9	
CRADData\Demog Publish\Projected_demog3_formula.xml	8	
CRADData\Demog Publish\Projected_demog4_formula.xml	7	
CRADData\Demog Publish\reports.xml	1	
CRADData\Demog Publish\ScriptX.cab	179	
CRADData\Demog Publish\smsx.cab	532	
CRADData\Demog Publish\Tran_demog_proj_1.htm	52	
CRADData\Demog Publish\Tran_demog_proj_2.htm	48	
CRADData\Demog Publish\Tran_demog_proj_3.htm	49	
CRADData\Demog Publish\Tran_demog_proj_4.htm	46	
CRADData\Demog Publish\Tran_Headerdemog_proj_1_formula.xml	1	
CRADData\Demog Publish\Tran_Headerdemog_proj_2_formula.xml	1	
CRADData\Demog Publish\Tran_Headerdemog_proj_3_formula.xml	1	
CRADData\Demog Publish\Tran_Headerdemog_proj_4_formula.xml	1	
CRADData\Demog Publish\Tran_Projected_demog1_formula.xml	7	
CRADData\Demog Publish\Tran_Projected_demog2_formula.xml	9	
CRADData\Demog Publish\Tran_Projected_demog3_formula.xml	8	
CRADData\Demog Publish\Tran_Projected_demog4_formula.xml	7	
CRADData\Demog Publish\wkshtC1.htm	46	
CRADData\Demog Publish\wkshtC2.htm	34	
CRADData\Demog Publish\wkshtC3.htm	29	
CRADData\Demog Publish\Images\analysis.jpg	10	
CRADData\Demog Publish\Images\BrackDown_N.gif	0	
CRADData\Demog Publish\Images\BrackDown_RL.gif	0	

File	Size	Version
CRADData\Demog Publish\Images\Breakdown.gif	0	
CRADData\Demog Publish\Images\Breakdown_Dw_Gif.gif	1	
CRADData\Demog Publish\Images\Breakdown_Dw_Gif_1.gif	1	
CRADData\Demog Publish\Images\Calculation_Dw_Gif.gif	1	
CRADData\Demog Publish\Images\Calculation_N.gif	0	
CRADData\Demog Publish\Images\Calculation_RL.gif	1	
CRADData\Demog Publish\Images\Calculation_Up_Gif.gif	0	
CRADData\Demog Publish\Images\droparrow.jpg	5	
CRADData\Demog Publish\Images\GenerateReport_N.jpg	7	
CRADData\Demog Publish\Images\GenerateReport_RL.jpg	7	
CRADData\Demog Publish\Images\go_button.jpg	6	
CRADData\Demog Publish\Images\go_button2.jpg	6	
CRADData\Demog Publish\Images\Lines_middle.jpg	6	
CRADData\Demog Publish\Images\Line_Jpg.jpg	5	
CRADData\Demog Publish\Images\M 2.GIF	1	
CRADData\Demog Publish\Images\m3.gif	0	
CRADData\Demog Publish\Images\m4.gif	0	
CRADData\Demog Publish\Images\M5.gif	0	
CRADData\Demog Publish\Images\M6.gif	0	
CRADData\Demog Publish\Images\masgeTool3.jpg	7	
CRADData\Demog Publish\Images\MENU 1.GIF	1	
CRADData\Demog Publish\Images\Picture1.jpg	11	
CRADData\Demog Publish\Images\reportAllDecrip.jpg	8	
CRADData\Demog Publish\Images\report_menuDw_G.gif	0	
CRADData\Demog Publish\Images\repot_menuUp_G.gif	1	
CRADData\Demog Publish\Images\Screen_1.GIF	1	
CRADData\Demog Publish\Images\SelectAnaly_Dw_Gif.gif	2	
CRADData\Demog Publish\Images\SelectAnaly_Up_Gif.gif	4	
CRADData\Demog Publish\Images\SelectAnasis_N.gif	1	
CRADData\Demog Publish\Images\SelectAnasis_RL.gif	1	
CRADData\Demog Publish\Images\Short_menuDw_G.gif	0	
CRADData\Demog Publish\Images\Short_menuUp_G.gif	0	
CRADData\Demog Publish\Images\template5_05-over.gif	1	
CRADData\Demog Publish\Images\template5_05.gif	0	
CRADData\Demog Publish\Images\template5_06.gif	1	

File	Size	Version
CRADData\Demog Publish\Images\template5_07-over.gif	0	
CRADData\Demog Publish\Images\template5_07.gif	0	
CRADData\Demog Publish\Images\template5_09-over.gif	0	
CRADData\Demog Publish\Images\template5_09.gif	0	
CRADData\Demog Publish\Images\template5_12-template5_03_u.gif	7	
CRADData\Demog Publish\Images\toolBarSTR.jpg	5	
CRADData\Demog Publish\Images\toolBar_1 copy.jpg	5	
CRADData\Demog Publish\Images\toolBar_1.jpg	7	
CRADData\Demog Publish\Images\toolBar_22.jpg	5	
CRADData\DemogReports\BusDemog.htm	37	
CRADData\DemogReports\BusDemog.xml	1	
CRADData\DemogReports\BusDemog_H.xml	0	
CRADData\DemogReports\EconEmployBLS.htm	29	
CRADData\DemogReports\EconEmployBLS.xml	2	
CRADData\DemogReports\EconEmployBLS_H.xml	0	
CRADData\DemogReports\EconEmployREIS.htm	29	
CRADData\DemogReports\EconEmployREIS.xml	3	
CRADData\DemogReports\EconEmployREIS_H.xml	0	
CRADData\DemogReports\EconPatterns.htm	22	
CRADData\DemogReports\EconPatterns.xml	1	
CRADData\DemogReports\EconPatterns_H.xml	0	
CRADData\DemogReports\EconPermit.htm	19	
CRADData\DemogReports\EconPermit.xml	1	
CRADData\DemogReports\EconPermit_H.xml	0	
CRADData\DemogReports\GeoDemogHousing.htm	34	
CRADData\DemogReports\GeoDemogHousing.xml	1	
CRADData\DemogReports\GeoDemogHousing_H.xml	0	
CRADData\DemogReports\GeoDemogIncome.htm	28	
CRADData\DemogReports\GeoDemogIncome.xml	1	
CRADData\DemogReports\GeoDemogIncome_H.xml	0	
CRADData\DemogReports\GeoDemogLabor.htm	52	
CRADData\DemogReports\GeoDemogLabor.xml	0	
CRADData\DemogReports\GeoDemogLabor_H.xml	0	
CRADData\DemogReports\GeoDemogPopulation.htm	32	
CRADData\DemogReports\GeoDemogPopulation.xml	1	

File	Size	Version
CRADData\DemogReports\GeoDemogPopulation_H.xml	0	
CRADData\DemogReports\GeoDemogTracts.htm	29	
CRADData\DemogReports\GeoDemogTracts.xml	2	
CRADData\DemogReports\GeoDemogTracts_H.xml	0	
CRADData\DemogReports\NotAvailable.htm	0	
CRADData\DemogReports\ProjFamily.htm	23	
CRADData\DemogReports\ProjFamily.xml	1	
CRADData\DemogReports\ProjFamily_H.xml	0	
CRADData\DemogReports\ProjIncome.htm	26	
CRADData\DemogReports\ProjIncome.xml	1	
CRADData\DemogReports\ProjIncome_H.xml	0	
CRADData\DemogReports\ProjPopulation.htm	28	
CRADData\DemogReports\ProjPopulation.xml	2	
CRADData\DemogReports\ProjPopulation_H.xml	0	
CRADData\DemogReports\ProjTracts.htm	29	
CRADData\DemogReports\ProjTracts.xml	2	
CRADData\DemogReports\ProjTracts_H.xml	0	
CRADData\DemogReports\Trn_ProjFamily.htm	24	
CRADData\DemogReports\Trn_ProjFamily.xml	1	
CRADData\DemogReports\Trn_ProjFamily_H.xml	0	
CRADData\DemogReports\Trn_ProjIncome.htm	27	
CRADData\DemogReports\Trn_ProjIncome.xml	1	
CRADData\DemogReports\Trn_ProjIncome_H.xml	0	
CRADData\DemogReports\Trn_ProjPopulation.htm	29	
CRADData\DemogReports\Trn_ProjPopulation.xml	2	
CRADData\DemogReports\Trn_ProjPopulation_H.xml	0	
CRADData\DemogReports\Trn_ProjTracts.htm	29	
CRADData\DemogReports\Trn_ProjTracts.xml	2	
CRADData\DemogReports\Trn_ProjTracts_H.xml	0	
CRADData\Map\Defaults.cfg	15	
CRADData\Map\map.ini	0	
CRADData\Map\map.mdb	256	
CRADData\Map\MapData\blank.DAT	0	
CRADData\Map\MapData\blank.ID	0	
CRADData\Map\MapData\blank.MAP	0	

File	Size	Version
CRADData\Map\MapData\blank.TAB	0	
CRADData\Map\MapData\cong109.DAT	4	
CRADData\Map\MapData\cong109.ID	2	
CRADData\Map\MapData\cong109.MAP	19632	
CRADData\Map\MapData\cong109.TAB	0	
CRADData\Map\MapData\cong110.DAT	4	
CRADData\Map\MapData\cong110.ID	2	
CRADData\Map\MapData\cong110.MAP	38954	
CRADData\Map\MapData\cong110.TAB	0	
CRADData\Map\MapData\cong111.DAT	22	
CRADData\Map\MapData\cong111.ID	2	
CRADData\Map\MapData\cong111.MAP	37846	
CRADData\Map\MapData\cong111.tab	0	
CRADData\Map\MapData\cong113.DAT	22	
CRADData\Map\MapData\cong113.ID	2	
CRADData\Map\MapData\cong113.MAP	31274	
CRADData\Map\MapData\cong113.TAB	0	
CRADData\Map\MapData\county.DAT	313	
CRADData\Map\MapData\county.ID	13	
CRADData\Map\MapData\county.IND	367	
CRADData\Map\MapData\county.MAP	27394	
CRADData\Map\MapData\county.TAB	0	
CRADData\Map\MapData\county04.DAT	313	
CRADData\Map\MapData\county04.ID	13	
CRADData\Map\MapData\county04.IND	437	
CRADData\Map\MapData\county04.MAP	35852	
CRADData\Map\MapData\county04.TAB	0	
CRADData\Map\MapData\county10.DAT	714	
CRADData\Map\MapData\county10.ID	13	
CRADData\Map\MapData\county10.IND	192	
CRADData\Map\MapData\county10.MAP	119532	
CRADData\Map\MapData\county10.TAB	0	
CRADData\Map\MapData\gdtrr2004.DAT	1231	
CRADData\Map\MapData\gdtrr2004.ID	259	
CRADData\Map\MapData\gdtrr2004.IND	2072	

File	Size	Version
CRADData\Map\MapData\gdtr2004.MAP	182353	
CRADData\Map\MapData\gdtr2004.TAB	0	
CRADData\Map\MapData\gdtr2010.DAT	2027	
CRADData\Map\MapData\gdtr2010.ID	290	
CRADData\Map\MapData\gdtr2010.IND	3215	
CRADData\Map\MapData\gdtr2010.MAP	271406	
CRADData\Map\MapData\gdtr2010.TAB	0	
CRADData\Map\MapData\msa.DAT	32	
CRADData\Map\MapData\msa.ID	2	
CRADData\Map\MapData\msa.IND	21	
CRADData\Map\MapData\msa.MAP	10732	
CRADData\Map\MapData\msa.TAB	0	
CRADData\Map\MapData\msa04.DAT	33	
CRADData\Map\MapData\msa04.ID	2	
CRADData\Map\MapData\msa04.IND	26	
CRADData\Map\MapData\msa04.MAP	10732	
CRADData\Map\MapData\msa04.TAB	0	
CRADData\Map\MapData\msa10.DAT	58	
CRADData\Map\MapData\msa10.ID	2	
CRADData\Map\MapData\msa10.IND	7	
CRADData\Map\MapData\msa10.MAP	25610	
CRADData\Map\MapData\msa10.TAB	0	
CRADData\Map\MapData\MSA14.DAT	60	
CRADData\Map\MapData\MSA14.ID	2	
CRADData\Map\MapData\MSA14.IND	9	
CRADData\Map\MapData\MSA14.MAP	25977	
CRADData\Map\MapData\MSA14.TAB	0	
CRADData\Map\MapData\state.DAT	6	
CRADData\Map\MapData\state.ID	0	
CRADData\Map\MapData\state.IND	1	
CRADData\Map\MapData\state.MAP	8550	
CRADData\Map\MapData\state.TAB	0	
CRADData\Map\MapData\tr2000.DAT	2466	
CRADData\Map\MapData\tr2000.ID	260	
CRADData\Map\MapData\tr2000.IND	2768	

File	Size	Version
CRADData\Map\MapData\tr2000.MAP	110904	
CRADData\Map\MapData\tr2000.TAB	0	
CRADData\Map\MapData\tr2004.DAT	2466	
CRADData\Map\MapData\tr2004.ID	260	
CRADData\Map\MapData\tr2004.IND	2769	
CRADData\Map\MapData\tr2004.MAP	137870	
CRADData\Map\MapData\tr2004.TAB	0	
CRADData\Map\MapData\Tr2010.DAT	2824	
CRADData\Map\MapData\Tr2010.ID	290	
CRADData\Map\MapData\Tr2010.IND	3215	
CRADData\Map\MapData\Tr2010.MAP	309290	
CRADData\Map\MapData\Tr2010.TAB	0	
CRADData\Map\MapData\Tract.DAT	2554	
CRADData\Map\MapData\Tract.ID	243	
CRADData\Map\MapData\Tract.IND	2414	
CRADData\Map\MapData\Tract.MAP	103432	
CRADData\Map\MapData\Tract.TAB	0	
CRADData\Map\Sample\CCORD1.TXT	22	
CRADData\Map\Sample\CCORD2.TXT	18	
CRADData\Map\Temp\cosmetic.id	0	
CRADData\Reports\Action_VS_Purpose_Type_hmz4_Data.xml	18	
CRADData\Reports\Action_v_Purp_Type_Col_amt.htm	25	
CRADData\Reports\Action_v_Purp_Type_Col_amt_formula.xml	1	
CRADData\Reports\Action_v_Purp_Type_Col_amt_hmz4.htm	29	
CRADData\Reports\Action_v_Purp_Type_Col_amt_hmz4_formula.xml	1	
CRADData\Reports\Action_v_Purp_Type_Col_cnt.htm	25	
CRADData\Reports\Action_v_Purp_Type_Col_cnt_formula.xml	1	
CRADData\Reports\Action_v_Purp_Type_Col_cnt_hmz4.htm	29	
CRADData\Reports\Action_v_Purp_Type_Col_cnt_hmz4_formula.xml	1	
CRADData\Reports\Action_v_Purp_Type_Grand_amt.htm	25	
CRADData\Reports\Action_v_Purp_Type_Grand_amt_formula.xml	1	
CRADData\Reports\Action_v_Purp_Type_Grand_amt_hmz4.htm	29	
CRADData\Reports\Action_v_Purp_Type_Grand_amt_hmz4_formula.xml	1	
CRADData\Reports\Action_v_Purp_Type_Grand_cnt.htm	25	
CRADData\Reports\Action_v_Purp_Type_Grand_cnt_formula.xml	1	



File	Size	Version
CRADData\Reports\Action_v_Purp_Type_Grand_cnt_hmz4.htm	29	
CRADData\Reports\Action_v_Purp_Type_Grand_cnt_hmz4_formula.xml	1	
CRADData\Reports\Action_v_Purp_Type_LA.htm	25	
CRADData\Reports\Action_v_Purp_Type_LA_formula.xml	1	
CRADData\Reports\Action_v_Purp_Type_LA_hmz4.htm	29	
CRADData\Reports\Action_v_Purp_Type_LA_hmz4_formula.xml	1	
CRADData\Reports\Action_v_Purp_Type_NA.htm	25	
CRADData\Reports\Action_v_Purp_Type_NA_formula.xml	1	
CRADData\Reports\Action_v_Purp_Type_NA_hmz4.htm	29	
CRADData\Reports\Action_v_Purp_Type_NA_hmz4_formula.xml	1	
CRADData\Reports\Action_v_Purp_Type_Row_amt.htm	25	
CRADData\Reports\Action_v_Purp_Type_Row_amt_formula.xml	1	
CRADData\Reports\Action_v_Purp_Type_Row_amt_hmz4.htm	29	
CRADData\Reports\Action_v_Purp_Type_Row_amt_hmz4_formula.xml	1	
CRADData\Reports\Action_v_Purp_Type_Row_cnt.htm	25	
CRADData\Reports\Action_v_Purp_Type_Row_cnt_formula.xml	1	
CRADData\Reports\Action_v_Purp_Type_Row_cnt_hmz4.htm	29	
CRADData\Reports\Action_v_Purp_Type_Row_cnt_hmz4_formula.xml	1	
CRADData\Reports\Action_v_Sex_amt.htm	22	
CRADData\Reports\Action_v_Sex_amt_formula.xml	1	
CRADData\Reports\Action_v_Sex_cnt.htm	22	
CRADData\Reports\Action_v_Sex_cnt_amt.htm	26	
CRADData\Reports\Action_v_Sex_cnt_amt_formula.xml	2	
CRADData\Reports\Action_v_Sex_cnt_formula.xml	1	
CRADData\Reports\Action_v_Sex_Col_amt.htm	22	
CRADData\Reports\Action_v_Sex_Col_amt_formula.xml	1	
CRADData\Reports\Action_v_Sex_Col_cnt.htm	22	
CRADData\Reports\Action_v_Sex_Col_cnt_formula.xml	1	
CRADData\Reports\Action_v_Sex_Grand_amt.htm	22	
CRADData\Reports\Action_v_Sex_Grand_amt_formula.xml	1	
CRADData\Reports\Action_v_Sex_Grand_cnt.htm	22	
CRADData\Reports\Action_v_Sex_Grand_cnt_formula.xml	1	
CRADData\Reports\Action_v_Sex_Row_amt.htm	22	
CRADData\Reports\Action_v_Sex_Row_amt_formula.xml	1	
CRADData\Reports\Action_v_Sex_Row_cnt.htm	22	

File	Size	Version
CRADData\Reports\Action_v_Sex_Row_cnt_formula.xml	1	
CRADData\Reports\Action_v_Tr_Inc_amt.htm	19	
CRADData\Reports\Action_v_Tr_Inc_amt_formula.xml	1	
CRADData\Reports\Action_v_Tr_Inc_cnt.htm	21	
CRADData\Reports\Action_v_Tr_Inc_cnt_amt.htm	25	
CRADData\Reports\Action_v_Tr_Inc_cnt_amt_formula.xml	2	
CRADData\Reports\Action_v_Tr_Inc_cnt_formula.xml	1	
CRADData\Reports\Action_v_Tr_Inc_Col_amt.htm	26	
CRADData\Reports\Action_v_Tr_Inc_Col_amt_formula.xml	2	
CRADData\Reports\Action_v_Tr_Inc_Col_cnt.htm	26	
CRADData\Reports\Action_v_Tr_Inc_Col_cnt_amt.htm	30	
CRADData\Reports\Action_v_Tr_Inc_Col_cnt_amt_formula.xml	7	
CRADData\Reports\Action_v_Tr_Inc_Col_cnt_formula.xml	2	
CRADData\Reports\Action_v_Tr_Inc_Grand_amt.htm	26	
CRADData\Reports\Action_v_Tr_Inc_Grand_amt_formula.xml	2	
CRADData\Reports\action_v_Tr_Inc_Grand_cnt.htm	26	
CRADData\Reports\action_v_tr_inc_grand_cnt_amt.htm	30	
CRADData\Reports\Action_v_tr_inc_grand_cnt_amt_formula.xml	7	
CRADData\Reports\action_v_Tr_Inc_Grand_cnt_formula.xml	2	
CRADData\Reports\Action_v_Tr_Inc_Row_amt.htm	26	
CRADData\Reports\Action_v_Tr_Inc_Row_amt_formula.xml	2	
CRADData\Reports\Action_v_Tr_Inc_Row_cnt.htm	26	
CRADData\Reports\action_v_tr_inc_row_cnt_amt.htm	31	
CRADData\Reports\action_v_tr_inc_row_cnt_amt_formula.xml	7	
CRADData\Reports\Action_v_Tr_Inc_Row_cnt_formula.xml	2	
CRADData\Reports\BranchLocationReport.rdlc	119	
CRADData\Reports\Census_Trac_Detail.htm	1	
CRADData\Reports\Census_Trac_Detail_footer.xml	0	
CRADData\Reports\Census_Trac_Detail_formula.xml	13	
CRADData\Reports\Census_Trac_Detail_Header.xml	1	
CRADData\Reports\Columnar.css	1	
CRADData\Reports\columnar.htm	33	
CRADData\Reports\ColumnarSample.html	1	
CRADData\Reports\CRA_IRS.htm	1	
CRADData\Reports\CRA_IRS_Footer.xml	0	

File	Size	Version
CRADData\Reports\cra_IRS_formula.xml	27	
CRADData\Reports\CRA_IRS_Header.xml	1	
CRADData\Reports\CRA_Sub.htm	1	
CRADData\Reports\CRA_Sub_Footer.xml	0	
CRADData\Reports\CRA_Sub_formula.xml	19	
CRADData\Reports\CRA_Sub_Header.xml	1	
CRADData\Reports\cra_trans.htm	1	
CRADData\Reports\cra_trans_Footer.xml	0	
CRADData\Reports\cra_trans_formula.xml	16	
CRADData\Reports\cra_trans_Header.xml	1	
CRADData\Reports\C_Disc_12.htm	1	
CRADData\Reports\C_Disc_12_Footer.xml	0	
CRADData\Reports\C_Disc_12_formula.xml	41	
CRADData\Reports\C_Disc_12_Header.xml	1	
CRADData\Reports\C_Disc_34.htm	1	
CRADData\Reports\C_Disc_34_Footer.xml	0	
CRADData\Reports\C_Disc_34_formula.xml	27	
CRADData\Reports\C_Disc_34_Header.xml	1	
CRADData\Reports\C_Disc_5.htm	1	
CRADData\Reports\C_Disc_5_Footer.xml	0	
CRADData\Reports\C_Disc_5_formula.xml	25	
CRADData\Reports\C_Disc_5_Header.xml	1	
CRADData\Reports\C_disc_6.htm	1	
CRADData\Reports\C_Disc_6_Footer.xml	0	
CRADData\Reports\C_Disc_6_formula.xml	10	
CRADData\Reports\C_Disc_6_Header.xml	1	
CRADData\Reports\c_lr.htm	31	
CRADData\Reports\DataQualityOption.css	2	
CRADData\Reports\DataQualityOption.htm	1	
CRADData\Reports\Data_Quality_Report.htm	34	
CRADData\Reports\Data_Quality_Report_Data.xml	10	
CRADData\Reports\Data_Quality_Report_formula.xml	3	
CRADData\Reports\default.css	3	
CRADData\Reports\Denial_Justification_Analysis_01.htm	19	
CRADData\Reports\Denial_Justification_Analysis_01_formula.xml	1	

File	Size	Version
CRADData\Reports\Denial_Justification_Analysis_02.htm	21	
CRADData\Reports\Denial_Justification_Analysis_02_formula.xml	2	
CRADData\Reports\Denial_Justification_Analysis_03.htm	25	
CRADData\Reports\Denial_Justification_Analysis_03_formula.xml	4	
CRADData\Reports\Denial_Justification_Analysis_04.htm	19	
CRADData\Reports\Denial_Justification_Analysis_04_formula.xml	1	
CRADData\Reports\Denial_Justification_Analysis_05.htm	20	
CRADData\Reports\Denial_Justification_Analysis_05_formula.xml	1	
CRADData\Reports\Denial_Justification_Analysis_06.htm	20	
CRADData\Reports\Denial_Justification_Analysis_06_formula.xml	2	
CRADData\Reports\Denial_Justification_Analysis_07.htm	18	
CRADData\Reports\Denial_Justification_Analysis_07_formula.xml	1	
CRADData\Reports\Denial_Justification_Analysis_08.htm	18	
CRADData\Reports\Denial_Justification_Analysis_08_formula.xml	1	
CRADData\Reports\Denial_Justification_Analysis_09.htm	18	
CRADData\Reports\Denial_Justification_Analysis_09_formula.xml	1	
CRADData\Reports\dep_dist_tr_inc.htm	24	
CRADData\Reports\dep_dist_tr_inc_formula.xml	1	
CRADData\Reports\dep_dist_tr_min.htm	26	
CRADData\Reports\dep_dist_tr_min_formula.xml	1	
CRADData\Reports\dep_low_mod_tr_test1_formula.xml	1	
CRADData\Reports\dep_low_mod_tr_test1_formula2.xml	1	
CRADData\Reports\dep_low_mod_tr_test2_formula.xml	1	
CRADData\Reports\dep_low_mod_tr_test2_formula2.xml	1	
CRADData\Reports\dep_low_mod_tr_test3_formula.xml	1	
CRADData\Reports\dep_low_mod_tr_test3_formula2.xml	1	
CRADData\Reports\dep_low_mod_tr_test_1.htm	40	
CRADData\Reports\dep_low_mod_tr_test_2.htm	40	
CRADData\Reports\dep_low_mod_tr_test_3.htm	39	
CRADData\Reports\dep_min_tr_test_1.htm	40	
CRADData\Reports\dep_min_tr_test_formula.xml	1	
CRADData\Reports\dep_min_tr_test_formula2.xml	1	
CRADData\Reports\Dep_Mkt_Shr_County.htm	1	
CRADData\Reports\Dep_Mkt_Shr_County_Footer.xml	0	
CRADData\Reports\Dep_Mkt_Shr_County_formula.xml	17	

File	Size	Version
CRADData\Reports\Dep_Mkt_Shr_County_Header.xml	1	
CRADData\Reports\Dep_Mkt_Shr_Lender.htm	1	
CRADData\Reports\Dep_Mkt_Shr_Lender_Footer.xml	0	
CRADData\Reports\Dep_Mkt_Shr_Lender_formula.xml	17	
CRADData\Reports\Dep_Mkt_Shr_Lender_Header.xml	1	
CRADData\Reports\Dep_Mkt_Shr_MSA.htm	1	
CRADData\Reports\Dep_Mkt_Shr_MSA_Footer.xml	0	
CRADData\Reports\Dep_Mkt_Shr_MSA_formula.xml	17	
CRADData\Reports\Dep_Mkt_Shr_MSA_Header.xml	1	
CRADData\Reports\Dep_Mkt_Shr_Page_Break_County.htm	1	
CRADData\Reports\Dep_Mkt_Shr_Page_Break_County_Footer.xml	0	
CRADData\Reports\Dep_Mkt_Shr_Page_Break_County_formula.xml	18	
CRADData\Reports\Dep_Mkt_Shr_Page_Break_County_Header.xml	1	
CRADData\Reports\Dep_Mkt_Shr_Page_Break_MSA.htm	1	
CRADData\Reports\Dep_Mkt_Shr_Page_Break_MSA_Footer.xml	0	
CRADData\Reports\Dep_Mkt_Shr_Page_Break_MSA_formula.xml	18	
CRADData\Reports\Dep_Mkt_Shr_Page_Break_MSA_Header.xml	1	
CRADData\Reports\Dep_Mkt_Shr_Page_Break_Tract.htm	1	
CRADData\Reports\Dep_Mkt_Shr_Page_Break_Tract_Footer.xml	0	
CRADData\Reports\Dep_Mkt_Shr_Page_Break_Tract_Formula.xml	18	
CRADData\Reports\Dep_Mkt_Shr_Page_Break_Tract_Header.xml	1	
CRADData\Reports\Dep_Mkt_Shr_Tract.htm	1	
CRADData\Reports\Dep_Mkt_Shr_Tract_Footer.xml	0	
CRADData\Reports\Dep_Mkt_Shr_Tract_formula.xml	18	
CRADData\Reports\Dep_Mkt_Shr_Tract_Header.xml	1	
CRADData\Reports\Disclosur_Report_Option.htm	4	
CRADData\Reports\Disclosur_Report_Option2.htm	3	
CRADData\Reports\Disposition_Summary_amt.htm	52	
CRADData\Reports\Disposition_Summary_amt_Col.htm	52	
CRADData\Reports\Disposition_Summary_amt_Col_formula.xml	6	
CRADData\Reports\Disposition_Summary_amt_formula.xml	5	
CRADData\Reports\Disposition_Summary_amt_Row.htm	52	
CRADData\Reports\Disposition_Summary_amt_Row_formula.xml	6	
CRADData\Reports\Disposition_Summary_cnt.htm	52	
CRADData\Reports\Disposition_Summary_cnt_Col.htm	52	

File	Size	Version
CRADData\Reports\Disposition_Summary_cnt_Col_formula.xml	6	
CRADData\Reports\Disposition_Summary_cnt_formula.xml	5	
CRADData\Reports\Disposition_Summary_cnt_Row.htm	52	
CRADData\Reports\Disposition_Summary_cnt_Row_formula.xml	6	
CRADData\Reports\edit_det_err.htm	1	
CRADData\Reports\edit_det_err_cra.htm	1	
CRADData\Reports\edit_det_err_cra_Footer.xml	0	
CRADData\Reports\edit_det_err_cra_formula.xml	18	
CRADData\Reports\edit_det_err_cra_grp.htm	1	
CRADData\Reports\edit_det_err_cra_grp_Footer.xml	0	
CRADData\Reports\edit_det_err_cra_grp_formula.xml	18	
CRADData\Reports\edit_det_err_cra_grp_Header.xml	1	
CRADData\Reports\edit_det_err_cra_Header.xml	1	
CRADData\Reports\edit_det_err_Footer.xml	0	
CRADData\Reports\edit_det_err_formula.xml	20	
CRADData\Reports\edit_det_err_grp.htm	1	
CRADData\Reports\edit_det_err_grp_Footer.xml	0	
CRADData\Reports\edit_det_err_grp_formula.xml	20	
CRADData\Reports\edit_det_err_grp_Header.xml	1	
CRADData\Reports\edit_det_err_Header.xml	1	
CRADData\Reports\edit_det_err_hmz4.htm	1	
CRADData\Reports\edit_det_err_hmz4_footer.xml	0	
CRADData\Reports\edit_det_err_hmz4_formula.xml	25	
CRADData\Reports\edit_det_err_hmz4_header.xml	1	
CRADData\Reports\edit_line_err.htm	1	
CRADData\Reports\edit_line_err_Footer.xml	0	
CRADData\Reports\edit_line_err_formula.xml	10	
CRADData\Reports\edit_line_err_grp.htm	1	
CRADData\Reports\edit_line_err_grp_Footer.xml	0	
CRADData\Reports\edit_line_err_grp_formula.xml	10	
CRADData\Reports\edit_line_err_grp_Header.xml	1	
CRADData\Reports\edit_line_err_Header.xml	1	
CRADData\Reports\edit_sum_err.htm	1	
CRADData\Reports\edit_sum_err_Footer.xml	0	
CRADData\Reports\edit_sum_err_formula.xml	15	

File	Size	Version
CRADData\Reports\edit_sum_err_grp.htm	1	
CRADData\Reports\edit_sum_err_grp_Footer.xml	0	
CRADData\Reports\edit_sum_err_grp_formula.xml	15	
CRADData\Reports\edit_sum_err_grp_Header.xml	1	
CRADData\Reports\edit_sum_err_Header.xml	1	
CRADData\Reports\Eth_Race_v_Action_02_Data.xml	54	
CRADData\Reports\Eth_Race_v_Action_amt_01.htm	44	
CRADData\Reports\Eth_Race_v_Action_amt_01_formula.xml	3	
CRADData\Reports\Eth_Race_v_Action_amt_02.htm	44	
CRADData\Reports\Eth_Race_v_Action_amt_02_formula.xml	3	
CRADData\Reports\Eth_Race_v_Action_amt_Col_01.htm	44	
CRADData\Reports\Eth_Race_v_Action_amt_Col_01_formula.xml	4	
CRADData\Reports\Eth_Race_v_Action_amt_Col_02.htm	44	
CRADData\Reports\Eth_Race_v_Action_amt_Col_02_formula.xml	4	
CRADData\Reports\Eth_Race_v_Action_amt_Grand_01.htm	44	
CRADData\Reports\Eth_Race_v_Action_amt_Grand_01_formula.xml	4	
CRADData\Reports\Eth_Race_v_Action_amt_Grand_02.htm	44	
CRADData\Reports\Eth_Race_v_Action_amt_Grand_02_formula.xml	4	
CRADData\Reports\Eth_Race_v_Action_amt_Row_01.htm	44	
CRADData\Reports\Eth_Race_v_Action_amt_Row_01_formula.xml	4	
CRADData\Reports\Eth_Race_v_Action_amt_Row_02.htm	44	
CRADData\Reports\Eth_Race_v_Action_amt_Row_02_formula.xml	4	
CRADData\Reports\Eth_Race_v_Action_amt_RtoW_01.htm	45	
CRADData\Reports\Eth_Race_v_Action_amt_RtoW_01_formula.xml	4	
CRADData\Reports\Eth_Race_v_Action_amt_RtoW_02.htm	46	
CRADData\Reports\Eth_Race_v_Action_amt_RtoW_02_formula.xml	4	
CRADData\Reports\Eth_Race_v_Action_cntamt_02.htm	67	
CRADData\Reports\Eth_Race_v_Action_cntamt_02_formula.xml	5	
CRADData\Reports\Eth_Race_v_Action_cnt_01.htm	44	
CRADData\Reports\Eth_Race_v_Action_cnt_01_formula.xml	3	
CRADData\Reports\Eth_Race_v_Action_cnt_02.htm	44	
CRADData\Reports\Eth_Race_v_Action_cnt_02_formula.xml	3	
CRADData\Reports\Eth_Race_v_Action_cnt_amt_01.htm	62	
CRADData\Reports\Eth_Race_v_Action_cnt_ant_01_formula.xml	5	
CRADData\Reports\Eth_Race_v_Action_cnt_Col_01.htm	44	

File	Size	Version
CRADData\Reports\Eth_Race_v_Action_cnt_Col_01_formula.xml	4	
CRADData\Reports\Eth_Race_v_Action_cnt_Col_02.htm	44	
CRADData\Reports\Eth_Race_v_Action_cnt_Col_02_formula.xml	4	
CRADData\Reports\Eth_Race_v_Action_cnt_Grand_01.htm	44	
CRADData\Reports\Eth_Race_v_Action_cnt_Grand_01_formula.xml	4	
CRADData\Reports\Eth_Race_v_Action_cnt_Grand_02.htm	44	
CRADData\Reports\Eth_Race_v_Action_cnt_Grand_02_formula.xml	4	
CRADData\Reports\Eth_Race_v_Action_cnt_Row_01.htm	44	
CRADData\Reports\Eth_Race_v_Action_cnt_Row_01_formula.xml	4	
CRADData\Reports\Eth_Race_v_Action_cnt_Row_02.htm	44	
CRADData\Reports\Eth_Race_v_Action_cnt_Row_02_formula.xml	4	
CRADData\Reports\Eth_Race_v_Action_cnt_RtoW_01.htm	46	
CRADData\Reports\Eth_Race_v_Action_cnt_RtoW_01_formula.xml	4	
CRADData\Reports\Eth_Race_v_Action_cnt_RtoW_02.htm	46	
CRADData\Reports\Eth_Race_v_Action_cnt_RtoW_02_formula.xml	4	
CRADData\Reports\Eth_Race_v_App_Inc_amt_01.htm	49	
CRADData\Reports\Eth_Race_v_App_Inc_amt_01_Col.htm	49	
CRADData\Reports\Eth_Race_v_App_Inc_amt_01_Col_formula.xml	5	
CRADData\Reports\Eth_Race_v_App_Inc_amt_01_formula.xml	4	
CRADData\Reports\Eth_Race_v_App_Inc_amt_01_Grand.htm	49	
CRADData\Reports\Eth_Race_v_App_Inc_amt_01_Grand_formula.xml	5	
CRADData\Reports\Eth_Race_v_App_Inc_amt_01_Row.htm	49	
CRADData\Reports\Eth_Race_v_App_Inc_amt_01_Row_formula.xml	5	
CRADData\Reports\Eth_Race_v_App_Inc_amt_01_RtoW.htm	51	
CRADData\Reports\Eth_Race_v_App_Inc_amt_01_RtoW_formula.xml	5	
CRADData\Reports\Eth_Race_v_App_Inc_amt_01_SupCol.htm	33	
CRADData\Reports\Eth_Race_v_App_Inc_amt_01_SupCol_formula.xml	3	
CRADData\Reports\Eth_Race_v_App_Inc_amt_02.htm	47	
CRADData\Reports\Eth_Race_v_App_Inc_amt_02_formula.xml	4	
CRADData\Reports\Eth_Race_v_App_Inc_amt_Col_02.htm	47	
CRADData\Reports\Eth_Race_v_App_Inc_amt_Col_02_formula.xml	5	
CRADData\Reports\Eth_Race_v_App_Inc_amt_Grand_02.htm	47	
CRADData\Reports\Eth_Race_v_App_Inc_amt_Grand_02_formula.xml	5	
CRADData\Reports\Eth_Race_v_App_Inc_amt_Row_02.htm	47	
CRADData\Reports\Eth_Race_v_App_Inc_amt_Row_02_formula.xml	5	



File	Size	Version
CRADData\Reports\Eth_Race_v_App_Inc_amt_RtoW_02.htm	48	
CRADData\Reports\Eth_Race_v_App_Inc_amt_RtoW_02_formula.xml	5	
CRADData\Reports\Eth_Race_v_App_Inc_amt_SupCol_02.htm	36	
CRADData\Reports\Eth_Race_v_App_Inc_amt_SupCol_02_formula.xml	4	
CRADData\Reports\Eth_Race_v_App_Inc_cnt_01.htm	49	
CRADData\Reports\Eth_Race_v_App_Inc_cnt_01_Col.htm	49	
CRADData\Reports\Eth_Race_v_App_Inc_cnt_01_Col_formula.xml	5	
CRADData\Reports\Eth_Race_v_App_Inc_cnt_01_formula.xml	4	
CRADData\Reports\Eth_Race_v_App_Inc_cnt_01_Grand.htm	49	
CRADData\Reports\Eth_Race_v_App_Inc_cnt_01_Grand_formula.xml	5	
CRADData\Reports\Eth_Race_v_App_Inc_cnt_01_Row.htm	49	
CRADData\Reports\Eth_Race_v_App_Inc_cnt_01_Row_formula.xml	5	
CRADData\Reports\Eth_Race_v_App_Inc_cnt_01_RtoW.htm	51	
CRADData\Reports\Eth_Race_v_App_Inc_cnt_01_RtoW_formula.xml	5	
CRADData\Reports\Eth_Race_v_App_Inc_cnt_01_SupCol.htm	33	
CRADData\Reports\Eth_Race_v_App_Inc_cnt_01_SupCol_formula.xml	3	
CRADData\Reports\Eth_Race_v_App_Inc_cnt_02.htm	47	
CRADData\Reports\Eth_Race_v_App_Inc_cnt_02_formula.xml	4	
CRADData\Reports\Eth_Race_v_App_Inc_cnt_Col_02.htm	50	
CRADData\Reports\Eth_Race_v_App_Inc_cnt_Col_02_formula.xml	5	
CRADData\Reports\Eth_Race_v_App_Inc_cnt_Grand_02.htm	47	
CRADData\Reports\Eth_Race_v_App_Inc_cnt_Grand_02_formula.xml	5	
CRADData\Reports\Eth_Race_v_App_Inc_cnt_Row_02.htm	51	
CRADData\Reports\Eth_Race_v_App_Inc_cnt_Row_02_formula.xml	5	
CRADData\Reports\Eth_Race_v_App_Inc_cnt_RtoW_02.htm	48	
CRADData\Reports\Eth_Race_v_App_Inc_cnt_RtoW_02_formula.xml	5	
CRADData\Reports\Eth_Race_v_App_Inc_cnt_SupCol_02.htm	36	
CRADData\Reports\Eth_Race_v_App_Inc_cnt_SupCol_02_formula.xml	4	
CRADData\Reports\Eth_Std_Summary_amt.htm	56	
CRADData\Reports\Eth_Std_Summary_amt_col.htm	55	
CRADData\Reports\Eth_Std_Summary_amt_col_formula.xml	7	
CRADData\Reports\Eth_Std_Summary_amt_formula.xml	7	
CRADData\Reports\Eth_Std_Summary_amt_OrigPurc.htm	56	
CRADData\Reports\Eth_Std_Summary_amt_row.htm	55	
CRADData\Reports\Eth_Std_Summary_amt_row_formula.xml	7	

File	Size	Version
CRADData\Reports\Eth_Std_Summary_cnt.htm	56	
CRADData\Reports\Eth_Std_Summary_cnt_amt.htm	78	
CRADData\Reports\Eth_Std_Summary_cnt_amt_formula.xml	12	
CRADData\Reports\Eth_Std_Summary_cnt_amt_OrigPurc.htm	78	
CRADData\Reports\Eth_Std_Summary_cnt_amt_OrigPurc_formula.xml	12	
CRADData\Reports\Eth_Std_Summary_cnt_col.htm	55	
CRADData\Reports\Eth_Std_Summary_cnt_col_formula.xml	6	
CRADData\Reports\Eth_Std_Summary_cnt_formula.xml	7	
CRADData\Reports\Eth_Std_Summary_cnt_OrigPurc.htm	56	
CRADData\Reports\Eth_Std_Summary_cnt_row.htm	55	
CRADData\Reports\Eth_Std_Summary_cnt_row_formula.xml	6	
CRADData\Reports\Eth_Summary_Action_amt.htm	70	
CRADData\Reports\Eth_Summary_Action_amt_OrigPurc.htm	70	
CRADData\Reports\Eth_Summary_Action_cnt.htm	70	
CRADData\Reports\Eth_Summary_Action_cnt_OrigPurc.htm	69	
CRADData\Reports\Eth_Summary_Action_Demog_amt.htm	76	
CRADData\Reports\Eth_Summary_Action_Demog_amt_formula.xml	10	
CRADData\Reports\Eth_Summary_Action_Demog_cnt.htm	76	
CRADData\Reports\Eth_Summary_Action_Demog_cnt_formula.xml	9	
CRADData\Reports\Eth_Summary_Action_amt_formula.xml	8	
CRADData\Reports\Eth_Summary_Action_cnt_formula.xml	8	
CRADData\Reports\Eth_Summary_Appl_Incm_amt.htm	72	
CRADData\Reports\Eth_Summary_Appl_Incm_amt_formula.xml	10	
CRADData\Reports\Eth_Summary_Appl_Incm_cnt.htm	73	
CRADData\Reports\Eth_Summary_Appl_Incm_cnt_formula.xml	11	
CRADData\Reports\Eth_Summary_App_Race_amt.htm	62	
CRADData\Reports\Eth_Summary_App_Race_amt_formula.xml	9	
CRADData\Reports\Eth_Summary_App_Race_cnt.htm	62	
CRADData\Reports\Eth_Summary_App_Race_cnt_formula.xml	9	
CRADData\Reports\Eth_Summary_Purp_Type_amt.htm	79	
CRADData\Reports\Eth_Summary_Purp_Type_amt_formula.xml	10	
CRADData\Reports\Eth_Summary_Purp_Type_cnt.htm	79	
CRADData\Reports\Eth_Summary_Purp_Type_cnt_formula.xml	11	
CRADData\Reports\Eth_Summary_Trct_Incm_amt.htm	68	
CRADData\Reports\Eth_Summary_Trct_Incm_amt_formula.xml	10	

File	Size	Version
CRADData\Reports\Eth_Summary_Trct_Incm_cnt.htm	71	
CRADData\Reports\Eth_Summary_Trct_Incm_cnt_formula.xml	11	
CRADData\Reports\Examiner Worksheet J.htm	32	
CRADData\Reports\Examiner Worksheet J_hmz4.htm	39	
CRADData\Reports\ExaminerWorksheet A.htm	365	
CRADData\Reports\ExaminerWorksheet B1.htm	57	
CRADData\Reports\ExaminerWorksheet B1_formula.xml	1	
CRADData\Reports\ExaminerWorksheet B1_formula2.xml	1	
CRADData\Reports\ExaminerWorksheet B1_formula3.xml	1	
CRADData\Reports\ExaminerWorksheet B1_hmz4.htm	43	
CRADData\Reports\ExaminerWorksheet B1_hmz4_formula1.xml	1	
CRADData\Reports\ExaminerWorksheet B1_hmz4_formula2.xml	1	
CRADData\Reports\ExaminerWorksheet B2.htm	61	
CRADData\Reports\ExaminerWorksheet B2_formula.xml	1	
CRADData\Reports\ExaminerWorksheet B2_formula2.xml	0	
CRADData\Reports\ExaminerWorksheet B2_formula3.xml	1	
CRADData\Reports\ExaminerWorksheet B2_formula4.xml	1	
CRADData\Reports\ExaminerWorksheet B2_hmz4.htm	49	
CRADData\Reports\ExaminerWorksheet B2_hmz4_formula1.xml	1	
CRADData\Reports\ExaminerWorksheet B2_hmz4_formula2.xml	1	
CRADData\Reports\ExaminerWorksheet B3.htm	60	
CRADData\Reports\ExaminerWorksheet B3_formula.xml	2	
CRADData\Reports\ExaminerWorksheet B3_formula2.xml	1	
CRADData\Reports\ExaminerWorksheet B3_formula3.xml	2	
CRADData\Reports\ExaminerWorksheet B3_hmz4.htm	42	
CRADData\Reports\ExaminerWorksheet B3_hmz4_formula1.xml	1	
CRADData\Reports\ExaminerWorksheet B3_hmz4_formula2.xml	1	
CRADData\Reports\ExaminerWorksheet B4.htm	48	
CRADData\Reports\ExaminerWorksheet B4_formula.xml	1	
CRADData\Reports\ExaminerWorksheet B4_formula2.xml	1	
CRADData\Reports\ExaminerWorksheet B4_hmz4.htm	52	
CRADData\Reports\ExaminerWorksheet B4_hmz4_formula1.xml	1	
CRADData\Reports\ExaminerWorksheet B4_hmz4_formula2.xml	0	
CRADData\Reports\ExaminerWorksheet B4_hmz4_formula3.xml	2	
CRADData\Reports\ExaminerWorksheet B5_hmz4.htm	62	

File	Size	Version
CRADData\Reports\ExaminerWorksheet B5_hmz4_formula1.xml	2	
CRADData\Reports\ExaminerWorksheet B5_hmz4_formula2.xml	1	
CRADData\Reports\ExaminerWorksheet B5_hmz4_formula3.xml	1	
CRADData\Reports\ExaminerWorksheet B6_hmz4.htm	58	
CRADData\Reports\ExaminerWorksheet B6_hmz4_formula1.xml	1	
CRADData\Reports\ExaminerWorksheet B6_hmz4_formula2.xml	1	
CRADData\Reports\ExaminerWorksheet B6_hmz4_formula3.xml	1	
CRADData\Reports\ExaminerWorksheet C1.htm	53	
CRADData\Reports\ExaminerWorksheet C1_formula.xml	1	
CRADData\Reports\ExaminerWorksheet C1_formula2.xml	2	
CRADData\Reports\ExaminerWorksheet C2.htm	45	
CRADData\Reports\ExaminerWorksheet C2_formula.xml	3	
CRADData\Reports\ExaminerWorksheet C3.htm	34	
CRADData\Reports\ExaminerWorksheet C3_formula.xml	1	
CRADData\Reports\ExaminerWorksheet D1.htm	32	
CRADData\Reports\ExaminerWorksheet D2.htm	47	
CRADData\Reports\ExaminerWorksheet E1.htm	63	
CRADData\Reports\ExaminerWorksheet E12.htm	62	
CRADData\Reports\ExaminerWorksheet E1_h4pr.htm	67	
CRADData\Reports\ExaminerWorksheet E1_hmz4.htm	69	
CRADData\Reports\ExaminerWorksheet E2.htm	52	
CRADData\Reports\ExaminerWorksheet E22.htm	52	
CRADData\Reports\ExaminerWorksheet E3.htm	62	
CRADData\Reports\ExaminerWorksheet E32.htm	62	
CRADData\Reports\ExaminerWorksheet E4.htm	51	
CRADData\Reports\ExaminerWorksheet E42.htm	51	
CRADData\Reports\ExaminerWorksheet E_formula1.xml	13	
CRADData\Reports\ExaminerWorksheet E_formula1_h4pr.xml	18	
CRADData\Reports\ExaminerWorksheet E_formula1_hmz4.xml	16	
CRADData\Reports\ExaminerWorksheet E_formula2.xml	3	
CRADData\Reports\ExaminerWorksheet E_formula3.xml	14	
CRADData\Reports\ExaminerWorksheet E_formula4.xml	3	
CRADData\Reports\ExaminerWorksheet F.htm	40	
CRADData\Reports\ExaminerWorksheet F1.htm	34	
CRADData\Reports\ExaminerWorksheet F1_formula.xml	1	

File	Size	Version
CRADData\Reports\ExaminerWorksheet F1_formula2.xml	3	
CRADData\Reports\ExaminerWorksheet F1_hmz4.htm	36	
CRADData\Reports\ExaminerWorksheet F1_hmz4_formula.xml	2	
CRADData\Reports\ExaminerWorksheet F1_hmz4_formula2.xml	2	
CRADData\Reports\ExaminerWorksheet F2.htm	24	
CRADData\Reports\ExaminerWorksheet F2_formula.xml	3	
CRADData\Reports\examinerworksheet f_formula.xml	1	
CRADData\Reports\ExaminerWorksheet F_formula1.xml	2	
CRADData\Reports\ExaminerWorksheet F_formula2.xml	4	
CRADData\Reports\ExaminerWorksheet G.htm	96	
CRADData\Reports\ExaminerWorksheet G1.htm	49	
CRADData\Reports\ExaminerWorksheet G1_formula.xml	5	
CRADData\Reports\ExaminerWorksheet G1_formula1.xml	5	
CRADData\Reports\ExaminerWorksheet G1_formula2.xml	3	
CRADData\Reports\ExaminerWorksheet G1_formula3.xml	3	
CRADData\Reports\ExaminerWorksheet G2.htm	54	
CRADData\Reports\ExaminerWorksheet G2_formula.xml	4	
CRADData\Reports\ExaminerWorksheet G2_formula2.xml	3	
CRADData\Reports\ExaminerWorksheet G3.htm	41	
CRADData\Reports\ExaminerWorksheet G3_formula.xml	4	
CRADData\Reports\ExaminerWorksheet G4.htm	50	
CRADData\Reports\ExaminerWorksheet G4_formula.xml	8	
CRADData\Reports\ExaminerWorksheet G5.htm	55	
CRADData\Reports\ExaminerWorksheet G5_formula.xml	6	
CRADData\Reports\ExaminerWorksheet G5_formula2.xml	2	
CRADData\Reports\ExaminerWorksheet G7.htm	55	
CRADData\Reports\ExaminerWorksheet G7_formula2.xml	2	
CRADData\Reports\ExaminerWorksheet G_formula1.xml	5	
CRADData\Reports\ExaminerWorksheet G_formula2.xml	3	
CRADData\Reports\ExaminerWorksheet G_formula3.xml	4	
CRADData\Reports\ExaminerWorksheet G_h4pr.htm	49	
CRADData\Reports\ExaminerWorksheet G_h4pr_formula.xml	5	
CRADData\Reports\ExaminerWorksheet G_hmz4.htm	49	
CRADData\Reports\ExaminerWorksheet G_hmz4_formula.xml	8	
CRADData\Reports\ExaminerWorksheet H.htm	64	

File	Size	Version
CRADData\Reports\ExaminerWorksheet H1.htm	74	
CRADData\Reports\ExaminerWorksheet H1_formula.xml	5	
CRADData\Reports\ExaminerWorksheet H2.htm	71	
CRADData\Reports\ExaminerWorksheet H2_formula.xml	5	
CRADData\Reports\ExaminerWorksheet H3.htm	75	
CRADData\Reports\ExaminerWorksheet H3_formula.xml	8	
CRADData\Reports\ExaminerWorksheet H4.htm	76	
CRADData\Reports\ExaminerWorksheet H4_formula.xml	6	
CRADData\Reports\ExaminerWorksheet H_formula.xml	6	
CRADData\Reports\ExaminerWorksheet H_formula2.xml	4	
CRADData\Reports\ExaminerWorksheet H_h4pr.htm	50	
CRADData\Reports\ExaminerWorksheet H_h4pr_formula.xml	5	
CRADData\Reports\ExaminerWorksheet H_hmz4.htm	51	
CRADData\Reports\ExaminerWorksheet H_hmz4_formula.xml	8	
CRADData\Reports\ExaminerWorksheet I1.htm	33	
CRADData\Reports\ExaminerWorksheet I2.htm	41	
CRADData\Reports\ExaminerWorksheet I3.htm	34	
CRADData\Reports\ExaminerWorksheet I4.htm	41	
CRADData\Reports\ExaminerWorksheet I_formula1.xml	2	
CRADData\Reports\ExaminerWorksheet I_formula2.xml	2	
CRADData\Reports\ExaminerWorksheet I_formula3.xml	2	
CRADData\Reports\ExaminerWorksheet I_formula4.xml	2	
CRADData\Reports\ExaminerWorksheet I_formula5.xml	2	
CRADData\Reports\ExaminerWorksheet I_formula6.xml	2	
CRADData\Reports\ExaminerWorksheet I_formula7.xml	2	
CRADData\Reports\ExaminerWorksheet I_formula8.xml	2	
CRADData\Reports\ExaminerWorksheet J_formula1.xml	1	
CRADData\Reports\ExaminerWorksheet J_formula2.xml	1	
CRADData\Reports\ExaminerWorksheet J_formula3.xml	1	
CRADData\Reports\ExaminerWorksheet J_formula4.xml	1	
CRADData\Reports\ExaminerWorksheet J_hmz4_formula1.xml	3	
CRADData\Reports\ExaminerWorksheet J_hmz4_formula2.xml	3	
CRADData\Reports\ExaminerWorksheet J_hmz4_formula3.xml	1	
CRADData\Reports\ExaminerWorksheet J_hmz4_formula4.xml	1	
CRADData\Reports\ExaminerWorksheet K.htm	33	

File	Size	Version
CRADData\Reports\ExaminerWorksheet K1.htm	46	
CRADData\Reports\ExaminerWorksheet L.htm	128	
CRADData\Reports\ExWrkAOption.htm	1	
CRADData\Reports\ExWrkAOptions.html	1	
CRADData\Reports\ExWrkDOption.htm	1	
CRADData\Reports\ExWrkE-2Option.htm	2	
CRADData\Reports\ExWrkE1Option.htm	2	
CRADData\Reports\ExWrkE2Option.htm	2	
CRADData\Reports\ExWrkEOption.htm	1	
CRADData\Reports\ExWrkFOption.htm	3	
CRADData\Reports\ExWrkGOption.htm	3	
CRADData\Reports\ExWrkHOption.htm	2	
CRADData\Reports\ExWrkIOption.htm	1	
CRADData\Reports\ExWrkJOption.htm	2	
CRADData\Reports\ExWrkK1Option.htm	2	
CRADData\Reports\ExWrkKOption.htm	1	
CRADData\Reports\ExWrkOptions.css	2	
CRADData\Reports\fdic_AppIncm_ClassbyTrac1_amt.htm	63	
CRADData\Reports\fdic_AppIncm_ClassbyTrac1_amt_formula.xml	6	
CRADData\Reports\fdic_AppIncm_ClassbyTrac1_cnt.htm	63	
CRADData\Reports\fdic_AppIncm_ClassbyTrac1_cnt_formula.xml	6	
CRADData\Reports\fdic_AppIncm_ClassbyTrac2_amt.htm	62	
CRADData\Reports\fdic_AppIncm_ClassbyTrac2_amt_formula.xml	5	
CRADData\Reports\fdic_AppIncm_ClassbyTrac2_cnt.htm	62	
CRADData\Reports\fdic_AppIncm_ClassbyTrac2_cnt_formula.xml	5	
CRADData\Reports\fdic_Dispersion.htm	21	
CRADData\Reports\fdic_Dispersion_Data.xml	3	
CRADData\Reports\fdic_Dispersion_formula.xml	2	
CRADData\Reports\fdic_Min_Lending_Action_House_amt.htm	28	
CRADData\Reports\fdic_Min_Lending_Action_House_amt_formula.xml	2	
CRADData\Reports\fdic_Min_Lending_Action_House_cnt.htm	28	
CRADData\Reports\fdic_Min_Lending_Action_House_cnt_formula.xml	2	
CRADData\Reports\fdic_Min_Lending_Action_Occu_amt.htm	28	
CRADData\Reports\fdic_Min_Lending_Action_Occu_amt_formula.xml	2	
CRADData\Reports\fdic_Min_Lending_Action_Occu_cnt.htm	29	

File	Size	Version
CRADData\Reports\fdic_Min_Lending_Action_Occu_cnt_formula.xml	2	
CRADData\Reports\fdic_Min_Lending_Action_Popu_amt.htm	28	
CRADData\Reports\fdic_Min_Lending_Action_Popu_amt_formula.xml	2	
CRADData\Reports\fdic_Min_Lending_Action_Popu_cnt.htm	28	
CRADData\Reports\fdic_Min_Lending_Action_Popu_cnt_formula.xml	2	
CRADData\Reports\fdic_Min_Lending_Action_Rent_amt.htm	28	
CRADData\Reports\fdic_Min_Lending_Action_Rent_amt_formula.xml	2	
CRADData\Reports\fdic_Min_Lending_Action_Rent_cnt.htm	28	
CRADData\Reports\fdic_Min_Lending_Action_Rent_cnt_formula.xml	2	
CRADData\Reports\fdic_Min_Lending_Purpose_House_amt.htm	27	
CRADData\Reports\fdic_Min_Lending_Purpose_House_amt_formula.xml	2	
CRADData\Reports\fdic_Min_Lending_Purpose_House_cnt.htm	27	
CRADData\Reports\fdic_Min_Lending_Purpose_House_cnt_formula.xml	2	
CRADData\Reports\fdic_Min_Lending_Purpose_Occu_amt.htm	27	
CRADData\Reports\fdic_Min_Lending_Purpose_Occu_amt_formula.xml	2	
CRADData\Reports\fdic_Min_Lending_Purpose_Occu_cnt.htm	27	
CRADData\Reports\fdic_Min_Lending_Purpose_Occu_cnt_formula.xml	2	
CRADData\Reports\fdic_Min_Lending_Purpose_Popu_amt.htm	27	
CRADData\Reports\fdic_Min_Lending_Purpose_Popu_amt_formula.xml	2	
CRADData\Reports\fdic_Min_Lending_Purpose_Popu_cnt.htm	27	
CRADData\Reports\fdic_Min_Lending_Purpose_Popu_cnt_formula.xml	2	
CRADData\Reports\fdic_Min_Lending_Purpose_Rent_amt.htm	27	
CRADData\Reports\fdic_Min_Lending_Purpose_Rent_amt_formula.xml	2	
CRADData\Reports\fdic_Min_Lending_Purpose_Rent_cnt.htm	27	
CRADData\Reports\fdic_Min_Lending_Purpose_Rent_cnt_formula.xml	2	
CRADData\Reports\fdic_mrkperf_Action_amt.htm	27	
CRADData\Reports\fdic_mrkperf_Action_amt_formula.xml	2	
CRADData\Reports\fdic_mrkperf_Action_cnt.htm	27	
CRADData\Reports\fdic_mrkperf_Action_cnt_formula.xml	2	
CRADData\Reports\fdic_mrkperf_Applincm_amt.htm	26	
CRADData\Reports\fdic_mrkperf_applincm_amt_formula.xml	2	
CRADData\Reports\fdic_mrkperf_Applincm_cnt.htm	26	
CRADData\Reports\fdic_mrkperf_applincm_cnt_formula.xml	2	
CRADData\Reports\fdic_mrkperf_LoanType_amt.htm	27	
CRADData\Reports\fdic_mrkperf_LoanType_amt_formula.xml	2	



File	Size	Version
CRADData\Reports\fdic_mrkperf_LoanType_cnt.htm	27	
CRADData\Reports\fdic_mrkperf_LoanType_cnt_formula.xml	2	
CRADData\Reports\fdic_mrkperf_Purpose_amt.htm	26	
CRADData\Reports\fdic_mrkperf_Purpose_amt_formula.xml	2	
CRADData\Reports\fdic_mrkperf_Purpose_cnt.htm	26	
CRADData\Reports\fdic_mrkperf_Purpose_cnt_formula.xml	2	
CRADData\Reports\fdic_mrkperf_Race_amt.htm	29	
CRADData\Reports\fdic_mrkperf_race_amt_formula.xml	2	
CRADData\Reports\fdic_mrkperf_Race_cnt.htm	29	
CRADData\Reports\fdic_mrkperf_race_cnt_formula.xml	2	
CRADData\Reports\fdic_mrkperf_Sex_amt.htm	27	
CRADData\Reports\fdic_mrkperf_sex_amt_formula.xml	2	
CRADData\Reports\fdic_mrkperf_Sex_cnt.htm	27	
CRADData\Reports\fdic_mrkperf_sex_cnt_formula.xml	2	
CRADData\Reports\fdic_mrkperf_Tract_amt.htm	27	
CRADData\Reports\fdic_mrkperf_tract_amt_formula.xml	2	
CRADData\Reports\fdic_mrkperf_Tract_cnt.htm	27	
CRADData\Reports\fdic_mrkperf_tract_cnt_formula.xml	2	
CRADData\Reports\fdic_mrkshare_Action.htm	31	
CRADData\Reports\fdic_mrkshare_Action_formula.xml	2	
CRADData\Reports\fdic_mrkshare_AppInc.htm	29	
CRADData\Reports\fdic_mrkshare_AppInc_formula.xml	2	
CRADData\Reports\fdic_mrkshare_LoanPurp.htm	27	
CRADData\Reports\fdic_mrkshare_LoanPurp_formula.xml	2	
CRADData\Reports\fdic_mrkshare_LoanType.htm	27	
CRADData\Reports\fdic_mrkshare_LoanType_formula.xml	2	
CRADData\Reports\fdic_mrkshare_Race.htm	31	
CRADData\Reports\fdic_mrkshare_Race_formula.xml	2	
CRADData\Reports\fdic_mrkshare_Sex.htm	27	
CRADData\Reports\fdic_mrkshare_Sex_formula.xml	2	
CRADData\Reports\fdic_mrkshare_Tract.htm	27	
CRADData\Reports\fdic_mrkshare_Tract_formula.xml	2	
CRADData\Reports\FFIEC_Table1.htm	1	
CRADData\Reports\FFIEC_Table11_12.htm	1	
CRADData\Reports\FFIEC_Table11_12_a.htm	1	

File	Size	Version
CRADData\Reports\FFIEC_Table11_12_a_formula.xml	22	
CRADData\Reports\FFIEC_Table11_12_Footer.xml	1	
CRADData\Reports\FFIEC_Table11_12_formula.xml	22	
CRADData\Reports\FFIEC_Table11_12_Header.xml	1	
CRADData\Reports\FFIEC_Table13.htm	1	
CRADData\Reports\FFIEC_Table13_Footer.xml	1	
CRADData\Reports\FFIEC_Table13_formula.xml	21	
CRADData\Reports\FFIEC_Table13_Header.xml	1	
CRADData\Reports\FFIEC_Table14.htm	1	
CRADData\Reports\FFIEC_Table14_Footer.xml	1	
CRADData\Reports\FFIEC_Table14_formula.xml	17	
CRADData\Reports\FFIEC_Table14_Header.xml	1	
CRADData\Reports\FFIEC_Table15.htm	1	
CRADData\Reports\FFIEC_Table15_Footer.xml	1	
CRADData\Reports\FFIEC_Table15_formula.xml	22	
CRADData\Reports\FFIEC_Table15_Header.xml	1	
CRADData\Reports\FFIEC_Table16.htm	1	
CRADData\Reports\FFIEC_Table16_Footer.xml	1	
CRADData\Reports\FFIEC_Table16_formula.xml	20	
CRADData\Reports\FFIEC_Table16_Header.xml	1	
CRADData\Reports\FFIEC_Table17.htm	1	
CRADData\Reports\FFIEC_Table17_Footer.xml	1	
CRADData\Reports\FFIEC_Table17_formula.xml	22	
CRADData\Reports\FFIEC_Table17_Header.xml	1	
CRADData\Reports\FFIEC_Table1a.htm	1	
CRADData\Reports\FFIEC_Table1a_1.htm	1	
CRADData\Reports\FFIEC_Table1a_1_Footer.xml	1	
CRADData\Reports\FFIEC_Table1a_1_formula.xml	15	
CRADData\Reports\FFIEC_Table1a_1_Header.xml	1	
CRADData\Reports\FFIEC_Table1a_Footer.xml	1	
CRADData\Reports\FFIEC_Table1a_formula.xml	21	
CRADData\Reports\FFIEC_Table1a_Header.xml	1	
CRADData\Reports\FFIEC_Table1_Footer.xml	1	
CRADData\Reports\FFIEC_Table1_formula.xml	20	
CRADData\Reports\FFIEC_Table1_Header.xml	1	

File	Size	Version
CRADData\Reports\FFIEC_Table2_5.htm	1	
CRADData\Reports\FFIEC_Table2_5_a.htm	1	
CRADData\Reports\FFIEC_Table2_5_a_formula.xml	23	
CRADData\Reports\FFIEC_Table2_5_Footer.xml	1	
CRADData\Reports\FFIEC_Table2_5_formula.xml	23	
CRADData\Reports\FFIEC_Table2_5_Header.xml	1	
CRADData\Reports\FFIEC_Table6_7.htm	1	
CRADData\Reports\FFIEC_Table6_7_a.htm	1	
CRADData\Reports\FFIEC_Table6_7_a_formula.xml	22	
CRADData\Reports\FFIEC_Table6_7_Footer.xml	1	
CRADData\Reports\FFIEC_Table6_7_formula.xml	22	
CRADData\Reports\FFIEC_Table6_7_Header.xml	1	
CRADData\Reports\FFIEC_Table8_10.htm	1	
CRADData\Reports\FFIEC_Table8_10_a.htm	1	
CRADData\Reports\FFIEC_Table8_10_a_formula.xml	22	
CRADData\Reports\FFIEC_Table8_10_Footer.xml	1	
CRADData\Reports\FFIEC_Table8_10_formula.xml	22	
CRADData\Reports\FFIEC_Table8_10_Header.xml	1	
CRADData\Reports\File2.js	76	
CRADData\Reports\genMove.js	3	
CRADData\Reports\GeoCode_Statistics_formula1.xml	1	
CRADData\Reports\GeoCode_Statistics_formula2.xml	1	
CRADData\Reports\GeoCode_Statistics_formula3.xml	1	
CRADData\Reports\geo_except.htm	1	
CRADData\Reports\geo_except_Footer.xml	0	
CRADData\Reports\geo_except_formula.xml	17	
CRADData\Reports\geo_except_Header.xml	1	
CRADData\Reports\geo_stat.htm	35	
CRADData\Reports\HistoryAnalysisOption.htm	4	
CRADData\Reports\HMDA_Pricing_Analysis_cnt.htm	54	
CRADData\Reports\HMDA_Pricing_Analysis_cnt_formula.xml	5	
CRADData\Reports\h_detail.htm	1	
CRADData\Reports\h_detail_Footer.xml	0	
CRADData\Reports\h_detail_formula.xml	17	
CRADData\Reports\h_detail_Header.xml	1	

File	Size	Version
CRADData\Reports\H_Disc_1.htm	1	
CRADData\Reports\H_Disc_1.xml	2	
CRADData\Reports\H_Disc_11a_hmz4_amt.htm	59	
CRADData\Reports\H_Disc_11a_hmz4_amt_formula.xml	5	
CRADData\Reports\H_Disc_11a_hmz4_cnt.htm	59	
CRADData\Reports\H_Disc_11a_hmz4_cnt_formula.xml	5	
CRADData\Reports\H_Disc_11b_hmz4_amt.htm	58	
CRADData\Reports\H_Disc_11b_hmz4_amt_formula.xml	5	
CRADData\Reports\H_Disc_11b_hmz4_cnt.htm	58	
CRADData\Reports\H_Disc_11b_hmz4_cnt_formula.xml	5	
CRADData\Reports\H_Disc_12a_hmz4_amt.htm	52	
CRADData\Reports\H_Disc_12a_hmz4_amt_formula.xml	6	
CRADData\Reports\H_Disc_12a_hmz4_cnt.htm	52	
CRADData\Reports\H_Disc_12a_hmz4_cnt_formula.xml	6	
CRADData\Reports\H_Disc_12b_hmz4_amt.htm	59	
CRADData\Reports\H_Disc_12b_hmz4_amt_formula.xml	5	
CRADData\Reports\H_Disc_12b_hmz4_cnt.htm	59	
CRADData\Reports\H_Disc_12b_hmz4_cnt_formula.xml	5	
CRADData\Reports\H_Disc_1_Footer.xml	0	
CRADData\Reports\H_Disc_1_formula.xml	25	
CRADData\Reports\H_Disc_1_Header.xml	1	
CRADData\Reports\H_Disc_1_hmz4.htm	1	
CRADData\Reports\H_Disc_1_hmz4_Footer.xml	0	
CRADData\Reports\H_Disc_1_hmz4_Formula.xml	26	
CRADData\Reports\H_Disc_1_hmz4_Header.xml	1	
CRADData\Reports\H_Disc_1_Tract.htm	1	
CRADData\Reports\H_Disc_1_Tract_Footer.xml	0	
CRADData\Reports\H_Disc_1_Tract_formula.xml	28	
CRADData\Reports\H_Disc_1_Tract_Header.xml	1	
CRADData\Reports\H_Disc_2.htm	1	
CRADData\Reports\H_Disc_2.xml	17	
CRADData\Reports\H_Disc_2_Footer.xml	0	
CRADData\Reports\H_Disc_2_formula.xml	25	
CRADData\Reports\H_Disc_2_Header.xml	1	
CRADData\Reports\H_Disc_2_hmz4.htm	1	

File	Size	Version
CRADData\Reports\H_Disc_2_hmz4_Footer.xml	0	
CRADData\Reports\H_Disc_2_hmz4_Formula.xml	26	
CRADData\Reports\H_Disc_2_hmz4_Header.xml	1	
CRADData\Reports\H_Disc_3.htm	1	
CRADData\Reports\H_Disc_3.xml	14	
CRADData\Reports\H_Disc_32_hmz4.htm	41	
CRADData\Reports\H_Disc_32_hmz4_Formula.xml	5	
CRADData\Reports\H_Disc_3_Footer.xml	0	
CRADData\Reports\H_Disc_3_formula.xml	31	
CRADData\Reports\H_Disc_3_Header.xml	1	
CRADData\Reports\H_Disc_3_hmz4.htm	1	
CRADData\Reports\H_Disc_3_hmz4_Footer.xml	0	
CRADData\Reports\H_Disc_3_hmz4_formula.xml	34	
CRADData\Reports\H_Disc_3_hmz4_Header.xml	1	
CRADData\Reports\H_Disc_4.htm	1	
CRADData\Reports\H_Disc_4.xml	12	
CRADData\Reports\H_Disc_4_Footer.xml	0	
CRADData\Reports\H_Disc_4_formula.xml	27	
CRADData\Reports\H_Disc_4_Header.xml	1	
CRADData\Reports\H_Disc_4_hmz4.htm	1	
CRADData\Reports\H_Disc_4_hmz4_Footer.xml	0	
CRADData\Reports\H_Disc_4_hmz4_formula.xml	27	
CRADData\Reports\H_Disc_4_hmz4_Header.xml	1	
CRADData\Reports\H_Disc_5.htm	1	
CRADData\Reports\H_Disc_5.xml	11	
CRADData\Reports\H_Disc_5_Footer.xml	0	
CRADData\Reports\H_Disc_5_formula.xml	25	
CRADData\Reports\H_Disc_5_Header.xml	1	
CRADData\Reports\H_Disc_5_hmz4.htm	1	
CRADData\Reports\H_Disc_5_hmz4_Footer.xml	0	
CRADData\Reports\H_Disc_5_hmz4_formula.xml	26	
CRADData\Reports\H_Disc_5_hmz4_Header.xml	1	
CRADData\Reports\H_Disc_6.htm	1	
CRADData\Reports\H_Disc_6.xml	6	
CRADData\Reports\H_Disc_6_Footer.xml	0	

File	Size	Version
CRADData\Reports\H_Disc_6_formula.xml	25	
CRADData\Reports\H_Disc_6_Header.xml	1	
CRADData\Reports\H_Disc_7.htm	1	
CRADData\Reports\H_Disc_7.xml	13	
CRADData\Reports\H_Disc_7_Footer.xml	0	
CRADData\Reports\H_Disc_7_formula.xml	33	
CRADData\Reports\H_Disc_7_Header.xml	1	
CRADData\Reports\H_Disc_7_hmz4.htm	1	
CRADData\Reports\H_Disc_7_hmz4_Footer.xml	0	
CRADData\Reports\H_Disc_7_hmz4_formula.xml	33	
CRADData\Reports\H_Disc_7_hmz4_Header.xml	1	
CRADData\Reports\H_Disc_8.htm	1	
CRADData\Reports\H_Disc_8.xml	9	
CRADData\Reports\H_Disc_8_Footer.xml	0	
CRADData\Reports\H_Disc_8_Formula.xml	36	
CRADData\Reports\H_Disc_8_Header.xml	1	
CRADData\Reports\H_Disc_8_hmz4.htm	1	
CRADData\Reports\H_Disc_8_hmz4_Footer.xml	0	
CRADData\Reports\H_Disc_8_hmz4_Formula.xml	36	
CRADData\Reports\H_Disc_8_hmz4_Header.xml	1	
CRADData\Reports\H_IRS_2004.htm	1	
CRADData\Reports\H_IRS_2004_Footer.xml	0	
CRADData\Reports\H_IRS_2004_formula.xml	19	
CRADData\Reports\H_IRS_2004_Header.xml	1	
CRADData\Reports\H_Lar.htm	1	
CRADData\Reports\H_Lar_Footer.xml	0	
CRADData\Reports\H_Lar_Formula.xml	32	
CRADData\Reports\H_Lar_Header.xml	1	
CRADData\Reports\H_Lar_Report.htm	1	
CRADData\Reports\H_Lar_Report_Footer.xml	0	
CRADData\Reports\H_Lar_Report_Formula.xml	34	
CRADData\Reports\H_Lar_Report_Header.xml	0	
CRADData\Reports\h_lar_report_hmz4.htm	1	
CRADData\Reports\H_Lar_Report_hmz4_Footer.xml	0	
CRADData\Reports\h_lar_report_hmz4_formula.xml	34	

File	Size	Version
CRADData\Reports\H_Lar_Report_hmz4_Header.xml	0	
CRADData\Reports\h_trans.htm	1	
CRADData\Reports\H_TRANS_2004.htm	1	
CRADData\Reports\H_TRANS_2004_Footer.xml	0	
CRADData\Reports\H_TRANS_2004_formula.xml	23	
CRADData\Reports\H_TRANS_2004_Header.xml	1	
CRADData\Reports\h_trans_Footer.xml	0	
CRADData\Reports\h_trans_formula.xml	23	
CRADData\Reports\h_trans_Header.xml	1	
CRADData\Reports\Incl_pur_Option.htm	3	
CRADData\Reports\Index.htm	106	
CRADData\Reports\lar_register.htm	1	
CRADData\Reports\lar_register_Footer.xml	0	
CRADData\Reports\lar_register_formula.xml	20	
CRADData\Reports\lar_register_Header.xml	0	
CRADData\Reports\LoanApplicationRegisterOption.htm	1	
CRADData\Reports\LowDpstTract_Lending.htm	1	
CRADData\Reports\LowDpstTract_Lending_Footer.xml	0	
CRADData\Reports\LowDpstTract_Lending_formula.xml	23	
CRADData\Reports\LowDpstTract_Lending_Header.xml	1	
CRADData\Reports\LowIncmTrac_Lending.htm	1	
CRADData\Reports\LowIncmTrac_Lending_Footer.xml	0	
CRADData\Reports\LowIncmTrac_Lending_formula.xml	23	
CRADData\Reports\LowIncmTrac_Lending_Header.xml	1	
CRADData\Reports\LowModAppIncm_Lending1.htm	56	
CRADData\Reports\LowModAppIncm_Lending1_formula.xml	1	
CRADData\Reports\LowModAppIncm_Lending1_formula2.xml	1	
CRADData\Reports\LowModAppIncm_Lending2.htm	54	
CRADData\Reports\LowModAppIncm_Lending2_formula.xml	1	
CRADData\Reports\LowModAppIncm_Lending2_formula2.xml	1	
CRADData\Reports\LowModAppIncm_Lending3.htm	53	
CRADData\Reports\LowModAppIncm_Lending3_formula.xml	1	
CRADData\Reports\LowModAppIncm_Lending3_formula2.xml	1	
CRADData\Reports\LowModDpstTract_Lending.htm	1	
CRADData\Reports\LowModDpstTract_Lending_Footer.xml	0	

File	Size	Version
CRADData\Reports\LowModDpstTract_Lending_formula.xml	23	
CRADData\Reports\LowModDpstTract_Lending_Header.xml	1	
CRADData\Reports\LowModIncmTrac_Lending.htm	1	
CRADData\Reports\LowModIncmTrac_Lending1.htm	45	
CRADData\Reports\LowModIncmTrac_Lending1_formula.xml	1	
CRADData\Reports\LowModIncmTrac_Lending1_formula2.xml	1	
CRADData\Reports\LowModIncmTrac_Lending2.htm	44	
CRADData\Reports\LowModIncmTrac_Lending2_formula.xml	1	
CRADData\Reports\LowModIncmTrac_Lending2_formula2.xml	1	
CRADData\Reports\LowModIncmTrac_Lending3.htm	44	
CRADData\Reports\LowModIncmTrac_Lending3_formula.xml	1	
CRADData\Reports\LowModIncmTrac_Lending3_formula2.xml	1	
CRADData\Reports\LowModIncmTrac_Lending_Footer.xml	0	
CRADData\Reports\LowModIncmTrac_Lending_formula.xml	23	
CRADData\Reports\LowModIncmTrac_Lending_Header.xml	1	
CRADData\Reports\LowModTract_Lending.htm	1	
CRADData\Reports\LowModTract_Lending_Footer.xml	0	
CRADData\Reports\LowModTract_Lending_formula.xml	23	
CRADData\Reports\LowModTract_Lending_Header.xml	1	
CRADData\Reports\LowTract_Lending.htm	1	
CRADData\Reports\LowTract_Lending_Footer.xml	0	
CRADData\Reports\LowTract_Lending_formula.xml	23	
CRADData\Reports\LowTract_Lending_Header.xml	1	
CRADData\Reports\MainModule.js	96	
CRADData\Reports\MICRO_IRS.htm	1	
CRADData\Reports\MICRO_IRS_Footer.xml	0	
CRADData\Reports\MICRO_IRS_formula.xml	27	
CRADData\Reports\MICRO_IRS_Header.xml	1	
CRADData\Reports\MidTract_Lending.htm	1	
CRADData\Reports\MidTract_Lending_Footer.xml	0	
CRADData\Reports\MidTract_Lending_formula.xml	24	
CRADData\Reports\MidTract_Lending_Header.xml	1	
CRADData\Reports\MidUpprTract_Lending.htm	1	
CRADData\Reports\MidUpprTract_Lending_Footer.xml	0	
CRADData\Reports\MidUpprTract_Lending_formula.xml	24	



File	Size	Version
CRADData\Reports\MidUprTract_Lending_Header.xml	1	
CRADData\Reports\mid_upr_tr_test_1.htm	26	
CRADData\Reports\mid_upr_tr_test_2.htm	26	
CRADData\Reports\mid_upr_tr_test_3.htm	26	
CRADData\Reports\Mint_Tract_Lending_Test.htm	60	
CRADData\Reports\Mint_Tract_Lending_Test_formula.xml	1	
CRADData\Reports\Mint_Tract_Lending_Test_formula2.xml	1	
CRADData\Reports\Mkt_Shr_County.htm	1	
CRADData\Reports\Mkt_Shr_County_Footer.xml	0	
CRADData\Reports\Mkt_Shr_County_formula.xml	18	
CRADData\Reports\Mkt_Shr_County_Header.xml	1	
CRADData\Reports\Mkt_Shr_County_Page_Break.htm	1	
CRADData\Reports\Mkt_Shr_County_Page_Break_Footer.xml	0	
CRADData\Reports\Mkt_Shr_County_Page_Break_formula.xml	18	
CRADData\Reports\Mkt_Shr_County_Page_Break_Header.xml	1	
CRADData\Reports\Mkt_Shr_Lender.htm	1	
CRADData\Reports\Mkt_Shr_Lender_Footer.xml	0	
CRADData\Reports\Mkt_Shr_Lender_formula.xml	16	
CRADData\Reports\Mkt_Shr_Lender_Header.xml	1	
CRADData\Reports\Mkt_Shr_MSA.htm	1	
CRADData\Reports\Mkt_Shr_MSA_Footer.xml	0	
CRADData\Reports\Mkt_Shr_MSA_formula.xml	17	
CRADData\Reports\Mkt_Shr_MSA_Header.xml	1	
CRADData\Reports\Mkt_Shr_MSA_Page_Break.htm	1	
CRADData\Reports\Mkt_Shr_MSA_Page_Break_Footer.xml	0	
CRADData\Reports\Mkt_Shr_MSA_Page_Break_formula.xml	18	
CRADData\Reports\Mkt_Shr_MSA_Page_Break_Header.xml	1	
CRADData\Reports\Mkt_Shr_Perf.htm	1	
CRADData\Reports\Mkt_Shr_Perf.xml	7	
CRADData\Reports\Mkt_Shr_Perf_Footer.xml	0	
CRADData\Reports\Mkt_Shr_Perf_formula.xml	29	
CRADData\Reports\Mkt_Shr_Perf_h4pr.htm	1	
CRADData\Reports\Mkt_Shr_Perf_h4pr_Footer.xml	0	
CRADData\Reports\Mkt_Shr_Perf_h4pr_formula.xml	29	
CRADData\Reports\Mkt_Shr_Perf_h4pr_Header.xml	1	

File	Size	Version
CRADData\Reports\Mkt_Shr_Perf_Header.xml	1	
CRADData\Reports\Mkt_Shr_Tract.htm	1	
CRADData\Reports\Mkt_Shr_Tract_Footer.xml	0	
CRADData\Reports\Mkt_Shr_Tract_formula.xml	18	
CRADData\Reports\Mkt_Shr_Tract_Header.xml	1	
CRADData\Reports\Mkt_Shr_Tract_Page_Break.htm	1	
CRADData\Reports\Mkt_Shr_Tract_Page_Break_Footer.xml	0	
CRADData\Reports\Mkt_Shr_Tract_Page_Break_formula.xml	18	
CRADData\Reports\Mkt_Shr_Tract_Page_Break_Header.xml	1	
CRADData\Reports\MnrtyDpstTract_Lending.htm	1	
CRADData\Reports\MnrtyDpstTract_Lending_Footer.xml	0	
CRADData\Reports\MnrtyDpstTract_Lending_formula.xml	22	
CRADData\Reports\MnrtyDpstTract_Lending_Header.xml	1	
CRADData\Reports\MnrtyTract_Lending.htm	1	
CRADData\Reports\MnrtyTract_Lending_Footer.xml	0	
CRADData\Reports\MnrtyTract_Lending_formula.xml	22	
CRADData\Reports\MnrtyTract_Lending_Header.xml	1	
CRADData\Reports\ModDpstTract_Lending.htm	1	
CRADData\Reports\ModDpstTract_Lending_Footer.xml	0	
CRADData\Reports\ModDpstTract_Lending_formula.xml	23	
CRADData\Reports\ModDpstTract_Lending_Header.xml	1	
CRADData\Reports\ModIncmTrac_Lending.htm	1	
CRADData\Reports\ModIncmTrac_Lending_Footer.xml	0	
CRADData\Reports\ModIncmTrac_Lending_formula.xml	23	
CRADData\Reports\ModIncmTrac_Lending_Header.xml	1	
CRADData\Reports\ModTract_Lending.htm	1	
CRADData\Reports\ModTract_Lending_Footer.xml	0	
CRADData\Reports\ModTract_Lending_formula.xml	22	
CRADData\Reports\ModTract_Lending_Header.xml	1	
CRADData\Reports\occ_bookmark.xml	0	
CRADData\Reports\occ_tbl.xml	18	
CRADData\Reports\options.css	1	
CRADData\Reports\options.htm	4	
CRADData\Reports\options.xml	1	
CRADData\Reports\OPT_County_Market_Share.htm	9	

File	Size	Version
CRADData\Reports\OPT_Denial_Justification_analysis.htm	6	
CRADData\Reports\OPT_Disclosure.htm	7	
CRADData\Reports\OPT_Disclosure_H4PR_11A.htm	8	
CRADData\Reports\OPT_Disclosure_H4PR_11B.htm	5	
CRADData\Reports\OPT_Disclosure_HMZ4.htm	8	
CRADData\Reports\OPT_FDIC_Mnrty_Lender.htm	4	
CRADData\Reports\OPT_h_lar.htm	4	
CRADData\Reports\OPT_Lender_Market_Share.htm	8	
CRADData\Reports\OPT_Low_and_Mod_Applicant_Income_Lending_Test.htm	5	
CRADData\Reports\OPT_Low_and_Mod_Tract_Income_Lending_Test2.htm	5	
CRADData\Reports\OPT_Minority_Tract_Lending_Test.htm	5	
CRADData\Reports\OPT_Minotity_Lending_Test.htm	3	
CRADData\Reports\OPT_MSA_Market_Share.htm	9	
CRADData\Reports\Opt_Summary_Action_Demog.htm	3	
CRADData\Reports\OPT_Tract_Market_Share.htm	9	
CRADData\Reports\Oth_Summary_Action_amt.htm	60	
CRADData\Reports\Oth_Summary_Action_amt_formula.xml	9	
CRADData\Reports\Oth_Summary_Action_cnt.htm	61	
CRADData\Reports\Oth_Summary_Action_cnt_amt.htm	63	
CRADData\Reports\Oth_Summary_Action_cnt_amt_formula.xml	7	
CRADData\Reports\Oth_Summary_Action_cnt_formula.xml	8	
CRADData\Reports\Oth_Summary_Action_Data.xml	82	
CRADData\Reports\Oth_Summary_App_Inc_amt.htm	60	
CRADData\Reports\Oth_Summary_App_Inc_amt_formula.xml	8	
CRADData\Reports\Oth_Summary_App_Inc_cnt.htm	61	
CRADData\Reports\Oth_Summary_App_Inc_cnt_formula.xml	8	
CRADData\Reports\Oth_Summary_App_Inc_Data.xml	55	
CRADData\Reports\Oth_Summary_App_Race_amt.htm	58	
CRADData\Reports\Oth_Summary_App_Race_amt_formula.xml	8	
CRADData\Reports\Oth_Summary_App_Race_cnt.htm	82	
CRADData\Reports\Oth_Summary_App_Race_cnt_formula.xml	8	
CRADData\Reports\Oth_Summary_App_Race_Data.xml	77	
CRADData\Reports\Oth_Summary_Purp_Type_amt.htm	61	
CRADData\Reports\Oth_Summary_Purp_Type_amt_formula.xml	8	
CRADData\Reports\Oth_Summary_Purp_Type_cnt.htm	64	

File	Size	Version
CRADData\Reports\Oth_Summary_Purp_Type_cnt_formula.xml	8	
CRADData\Reports\Oth_Summary_Purp_Type_Data.xml	58	
CRADData\Reports\Oth_Summary_Tr_Inc_amt.htm	61	
CRADData\Reports\Oth_Summary_Tr_Inc_amt_formula.xml	8	
CRADData\Reports\Oth_Summary_Tr_Inc_cnt.htm	61	
CRADData\Reports\Oth_Summary_Tr_Inc_cnt_formula.xml	8	
CRADData\Reports\Oth_Summary_Tr_Inc_Data.xml	55	
CRADData\Reports\Overall_Geocoding_Accuracy_Report.htm	30	
CRADData\Reports\Overall_Geocoding_Accuracy_Report_formula1.xml	0	
CRADData\Reports\Overall_Geocoding_Accuracy_Report_formula2.xml	0	
CRADData\Reports\Overall_Geocoding_Accuracy_Report_formula3.xml	0	
CRADData\Reports\Overall_Geocoding_Accuracy_Report_formula4.xml	0	
CRADData\Reports\Overall_Geocoding_Accuracy_Report_formula5.xml	1	
CRADData\Reports\Peer_Pricing.htm	1	
CRADData\Reports\Peer_Pricing_Appl_Incm.htm	1	
CRADData\Reports\Peer_Pricing_Appl_Incm_Footer.xml	0	
CRADData\Reports\Peer_Pricing_Appl_Incm_formula.xml	27	
CRADData\Reports\Peer_Pricing_Appl_Incm_Header.xml	1	
CRADData\Reports\Peer_Pricing_Ethnicity.htm	1	
CRADData\Reports\Peer_Pricing_Ethnicity_Footer.xml	0	
CRADData\Reports\Peer_Pricing_Ethnicity_formula.xml	27	
CRADData\Reports\Peer_Pricing_Ethnicity_Header.xml	1	
CRADData\Reports\Peer_Pricing_Footer.xml	0	
CRADData\Reports\Peer_Pricing_formula.xml	27	
CRADData\Reports\Peer_Pricing_Gender.htm	1	
CRADData\Reports\Peer_Pricing_Gender_Footer.xml	0	
CRADData\Reports\Peer_Pricing_Gender_formula.xml	27	
CRADData\Reports\Peer_Pricing_Gender_Header.xml	1	
CRADData\Reports\Peer_Pricing_Header.xml	1	
CRADData\Reports\Peer_Pricing_High_Mnrty.htm	1	
CRADData\Reports\Peer_Pricing_High_Mnrty_Footer.xml	0	
CRADData\Reports\Peer_Pricing_High_Mnrty_formula.xml	27	
CRADData\Reports\Peer_Pricing_High_Mnrty_Header.xml	1	
CRADData\Reports\Peer_Pricing_Mnrty_Appl.htm	1	
CRADData\Reports\Peer_Pricing_Mnrty_Appl_Footer.xml	0	

File	Size	Version
CRADData\Reports\Peer_Pricing_Mnrty_Appl_formula.xml	27	
CRADData\Reports\Peer_Pricing_Mnrty_Appl_Header.xml	1	
CRADData\Reports\Peer_Pricing_Race.htm	1	
CRADData\Reports\Peer_Pricing_Race_Footer.xml	0	
CRADData\Reports\Peer_Pricing_Race_formula.xml	27	
CRADData\Reports\Peer_Pricing_Race_Header.xml	1	
CRADData\Reports\Peer_Pricing_Trct_Incm.htm	1	
CRADData\Reports\Peer_Pricing_Trct_Incm_Footer.xml	0	
CRADData\Reports\Peer_Pricing_Trct_Incm_formula.xml	27	
CRADData\Reports\Peer_Pricing_Trct_Incm_Header.xml	1	
CRADData\Reports\PH_Lar_Report.htm	1	
CRADData\Reports\PH_Lar_Report_Footer.xml	0	
CRADData\Reports\PH_Lar_Report_Formula.xml	34	
CRADData\Reports\PH_Lar_Report_Header.xml	0	
CRADData\Reports\PricingByApplIncm2_Amt.htm	30	
CRADData\Reports\PricingByApplIncm2_Amt_Col.htm	30	
CRADData\Reports\PricingByApplIncm2_amt_Col_formula.xml	2	
CRADData\Reports\PricingByApplIncm2_Amt_formula.xml	2	
CRADData\Reports\PricingByApplIncm2_Amt_Row.htm	30	
CRADData\Reports\PricingByApplIncm2_amt_Row_formula.xml	2	
CRADData\Reports\PricingByApplIncm2_Cnt.htm	30	
CRADData\Reports\PricingByApplIncm2_Cnt_Col.htm	30	
CRADData\Reports\PricingByApplIncm2_cnt_Col_formula.xml	2	
CRADData\Reports\PricingByApplIncm2_cnt_formula.xml	2	
CRADData\Reports\PricingByApplIncm2_Cnt_Row.htm	30	
CRADData\Reports\PricingByApplIncm2_cnt_Row_formula.xml	2	
CRADData\Reports\PricingByApplIncm_Amt.htm	45	
CRADData\Reports\PricingByApplIncm_Amt_Col.htm	45	
CRADData\Reports\PricingByApplIncm_amt_Col_formula.xml	2	
CRADData\Reports\PricingByApplIncm_Amt_formula.xml	2	
CRADData\Reports\PricingByApplIncm_Amt_Row.htm	45	
CRADData\Reports\PricingByApplIncm_amt_Row_formula.xml	2	
CRADData\Reports\PricingByApplIncm_Cnt.htm	45	
CRADData\Reports\PricingByApplIncm_Cnt_Col.htm	45	
CRADData\Reports\PricingByApplIncm_cnt_Col_formula.xml	2	

File	Size	Version
CRADData\Reports\PricingByApplIncm_cnt_formula.xml	2	
CRADData\Reports\PricingByApplIncm_Cnt_Row.htm	45	
CRADData\Reports\PricingByApplIncm_cnt_Row_formula.xml	2	
CRADData\Reports\PricingByCensusTract2_Amt.htm	36	
CRADData\Reports\PricingByCensusTract2_Amt_Col.htm	36	
CRADData\Reports\PricingByCensusTract2_amt_Col_formula.xml	3	
CRADData\Reports\PricingByCensusTract2_amt_formula.xml	2	
CRADData\Reports\PricingByCensusTract2_Amt_Row.htm	36	
CRADData\Reports\PricingByCensusTract2_amt_Row_formula.xml	3	
CRADData\Reports\PricingByCensusTract2_Cnt.htm	36	
CRADData\Reports\PricingByCensusTract2_Cnt_Col.htm	36	
CRADData\Reports\PricingByCensusTract2_cnt_Col_formula.xml	3	
CRADData\Reports\PricingByCensusTract2_cnt_formula.xml	2	
CRADData\Reports\PricingByCensusTract2_Cnt_Row.htm	36	
CRADData\Reports\PricingByCensusTract2_cnt_Row_formula.xml	3	
CRADData\Reports\PricingByCensusTract_Amt.htm	36	
CRADData\Reports\PricingByCensusTract_Amt_Col.htm	36	
CRADData\Reports\PricingByCensusTract_amt_Col_formula.xml	3	
CRADData\Reports\PricingByCensusTract_amt_formula.xml	2	
CRADData\Reports\PricingByCensusTract_Amt_Row.htm	36	
CRADData\Reports\PricingByCensusTract_amt_Row_formula.xml	3	
CRADData\Reports\PricingByCensusTract_Cnt.htm	36	
CRADData\Reports\PricingByCensusTract_Cnt_Col.htm	36	
CRADData\Reports\PricingByCensusTract_cnt_Col_formula.xml	3	
CRADData\Reports\PricingByCensusTract_cnt_formula.xml	2	
CRADData\Reports\PricingByCensusTract_Cnt_Row.htm	36	
CRADData\Reports\PricingByCensusTract_cnt_Row_formula.xml	3	
CRADData\Reports\PricingRaceEth2_Amt.htm	38	
CRADData\Reports\PricingRaceEth2_Amt_Col.htm	38	
CRADData\Reports\PricingRaceEth2_amt_Col_formula.xml	4	
CRADData\Reports\PricingRaceEth2_amt_formula.xml	3	
CRADData\Reports\PricingRaceEth2_Amt_Row.htm	38	
CRADData\Reports\PricingRaceEth2_amt_Row_formula.xml	4	
CRADData\Reports\PricingRaceEth2_Cnt.htm	38	
CRADData\Reports\PricingRaceEth2_Cnt_Col.htm	38	

File	Size	Version
CRADData\Reports\PricingRaceEth2_cnt_Col_formula.xml	4	
CRADData\Reports\PricingRaceEth2_cnt_formula.xml	3	
CRADData\Reports\PricingRaceEth2_Cnt_Row.htm	38	
CRADData\Reports\PricingRaceEth2_cnt_Row_formula.xml	4	
CRADData\Reports\PricingRaceEth_Amt.htm	39	
CRADData\Reports\PricingRaceEth_Amt_Col.htm	39	
CRADData\Reports\PricingRaceEth_amt_Col_formula.xml	4	
CRADData\Reports\PricingRaceEth_amt_formula.xml	3	
CRADData\Reports\PricingRaceEth_Amt_Row.htm	39	
CRADData\Reports\PricingRaceEth_amt_Row_formula.xml	4	
CRADData\Reports\PricingRaceEth_Cnt.htm	39	
CRADData\Reports\PricingRaceEth_Cnt_Col.htm	39	
CRADData\Reports\PricingRaceEth_cnt_Col_formula.xml	4	
CRADData\Reports\PricingRaceEth_cnt_formula.xml	3	
CRADData\Reports\PricingRaceEth_Cnt_Row.htm	39	
CRADData\Reports\PricingRaceEth_cnt_Row_formula.xml	4	
CRADData\Reports\Pricing_Analysis_cnt.htm	53	
CRADData\Reports\Pricing_Analysis_cnt_formula.xml	4	
CRADData\Reports\Pricing_Summary2_amt.htm	59	
CRADData\Reports\Pricing_Summary2_amt_Col.htm	59	
CRADData\Reports\Pricing_Summary2_amt_Col_formula.xml	7	
CRADData\Reports\Pricing_Summary2_amt_formula.xml	5	
CRADData\Reports\Pricing_Summary2_amt_Row.htm	59	
CRADData\Reports\Pricing_Summary2_amt_Row_formula.xml	7	
CRADData\Reports\Pricing_Summary2_cnt.htm	59	
CRADData\Reports\Pricing_Summary2_cnt_Col.htm	59	
CRADData\Reports\Pricing_Summary2_cnt_Col_formula.xml	7	
CRADData\Reports\Pricing_Summary2_cnt_formula.xml	5	
CRADData\Reports\Pricing_Summary2_cnt_Row.htm	59	
CRADData\Reports\Pricing_Summary2_cnt_Row_formula.xml	7	
CRADData\Reports\Pricing_Summary_amt.htm	60	
CRADData\Reports\Pricing_Summary_amt_Col.htm	60	
CRADData\Reports\Pricing_Summary_amt_Col_formula.xml	7	
CRADData\Reports\Pricing_Summary_amt_formula.xml	5	
CRADData\Reports\Pricing_Summary_amt_Row.htm	60	

File	Size	Version
CRADData\Reports\Pricing_Summary_amt_Row_formula.xml	7	
CRADData\Reports\Pricing_Summary_cnt.htm	60	
CRADData\Reports\Pricing_Summary_cnt_Col.htm	60	
CRADData\Reports\Pricing_Summary_cnt_Col_formula.xml	7	
CRADData\Reports\Pricing_Summary_cnt_formula.xml	5	
CRADData\Reports\Pricing_Summary_cnt_Row.htm	60	
CRADData\Reports\Pricing_Summary_cnt_Row_formula.xml	7	
CRADData\Reports\printCurrent.htm	4	
CRADData\Reports\printing.htm	14	
CRADData\Reports\PurpLienByActionLoanType_amt.htm	38	
CRADData\Reports\PurpLienByActionLoanType_amt_Col.htm	38	
CRADData\Reports\PurpLienByActionLoanType_amt_Col_formula.xml	4	
CRADData\Reports\PurpLienByActionLoanType_amt_formula.xml	4	
CRADData\Reports\PurpLienByActionLoanType_amt_Grand.htm	38	
CRADData\Reports\PurpLienByActionLoanType_amt_Grand_formula.xml	4	
CRADData\Reports\PurpLienByActionLoanType_amt_Row.htm	38	
CRADData\Reports\PurpLienByActionLoanType_amt_Row_formula.xml	4	
CRADData\Reports\PurpLienByActionLoanType_cnt.htm	38	
CRADData\Reports\PurpLienByActionLoanType_cnt_Col.htm	38	
CRADData\Reports\PurpLienByActionLoanType_cnt_Col_formula.xml	4	
CRADData\Reports\PurpLienByActionLoanType_cnt_formula.xml	4	
CRADData\Reports\PurpLienByActionLoanType_cnt_Grand.htm	38	
CRADData\Reports\PurpLienByActionLoanType_cnt_Grand_formula.xml	4	
CRADData\Reports\PurpLienByActionLoanType_cnt_Row.htm	38	
CRADData\Reports\PurpLienByActionLoanType_cnt_Row_formula.xml	4	
CRADData\Reports\PurpLienByApplincm_amt.htm	30	
CRADData\Reports\PurpLienByApplincm_amt_Col.htm	30	
CRADData\Reports\PurpLienByApplincm_amt_Col_formula.xml	1	
CRADData\Reports\PurpLienByApplincm_amt_formula.xml	1	
CRADData\Reports\PurpLienByApplincm_amt_Grand.htm	30	
CRADData\Reports\PurpLienByApplincm_amt_Grand_formula.xml	1	
CRADData\Reports\PurpLienByApplincm_amt_Row.htm	30	
CRADData\Reports\PurpLienByApplincm_amt_Row_formula.xml	1	
CRADData\Reports\PurpLienByApplincm_cnt.htm	30	
CRADData\Reports\PurpLienByApplincm_cnt_Col.htm	30	



File	Size	Version
CRADData\Reports\PurpLienByApplincm_cnt_Col_formula.xml	1	
CRADData\Reports\PurpLienByApplincm_cnt_formula.xml	1	
CRADData\Reports\PurpLienByApplincm_cnt_Grand.htm	30	
CRADData\Reports\PurpLienByApplincm_cnt_Grand_formula.xml	1	
CRADData\Reports\PurpLienByApplincm_cnt_Row.htm	30	
CRADData\Reports\PurpLienByApplincm_cnt_Row_formula.xml	1	
CRADData\Reports\PurpLienByPropPrc_Amt.htm	34	
CRADData\Reports\PurpLienByPropPrc_amt_Col.htm	34	
CRADData\Reports\PurpLienByPropPrc_amt_Col_formula.xml	3	
CRADData\Reports\PurpLienByPropPrc_Amt_formula.xml	3	
CRADData\Reports\PurpLienByPropPrc_amt_Row.htm	34	
CRADData\Reports\PurpLienByPropPrc_amt_Row_formula.xml	3	
CRADData\Reports\PurpLienByPropPrc_Cnt.htm	34	
CRADData\Reports\PurpLienByPropPrc_Cnt_Col.htm	34	
CRADData\Reports\PurpLienByPropPrc_cnt_Col_formula.xml	3	
CRADData\Reports\PurpLienByPropPrc_Cnt_formula.xml	3	
CRADData\Reports\PurpLienByPropPrc_Cnt_Row.htm	34	
CRADData\Reports\PurpLienByPropPrc_cnt_Row_formula.xml	3	
CRADData\Reports\PurpLienByPropPrc_Data.xml	9	
CRADData\Reports\PurposeLienByRaceEth_Amt.htm	38	
CRADData\Reports\PurposeLienByRaceEth_Amt_Col.htm	37	
CRADData\Reports\PurposeLienByRaceEth_Amt_Col_formula.xml	2	
CRADData\Reports\PurposeLienByRaceEth_Amt_formula.xml	2	
CRADData\Reports\PurposeLienByRaceEth_Amt_Grand.htm	37	
CRADData\Reports\PurposeLienByRaceEth_Amt_Grand_formula.xml	2	
CRADData\Reports\PurposeLienByRaceEth_Amt_Row.htm	37	
CRADData\Reports\PurposeLienByRaceEth_Amt_Row_formula.xml	2	
CRADData\Reports\PurposeLienByRaceEth_cnt.htm	37	
CRADData\Reports\PurposeLienByRaceEth_cnt_Col.htm	37	
CRADData\Reports\PurposeLienByRaceEth_Cnt_Col_formula.xml	2	
CRADData\Reports\PurposeLienByRaceEth_Cnt_formula.xml	2	
CRADData\Reports\PurposeLienByRaceEth_cnt_Grand.htm	37	
CRADData\Reports\PurposeLienByRaceEth_Cnt_Grand_formula.xml	2	
CRADData\Reports\PurposeLienByRaceEth_cnt_Row.htm	37	
CRADData\Reports\PurposeLienByRaceEth_Cnt_Row_formula.xml	2	

File	Size	Version
CRADData\Reports\PurposeLienStatusByTracts_amt.htm	32	
CRADData\Reports\PurposeLienStatusByTracts_amt_Col.htm	31	
CRADData\Reports\PurposeLienStatusByTracts_amt_Col_formula.xml	2	
CRADData\Reports\PurposeLienStatusByTracts_amt_formula.xml	2	
CRADData\Reports\PurposeLienStatusByTracts_amt_Grand.htm	31	
CRADData\Reports\PurposeLienStatusByTracts_amt_Grand_formula.xml	2	
CRADData\Reports\PurposeLienStatusByTracts_amt_Row.htm	31	
CRADData\Reports\PurposeLienStatusByTracts_amt_Row_formula.xml	2	
CRADData\Reports\PurposeLienStatusByTracts_cnt.htm	31	
CRADData\Reports\PurposeLienStatusByTracts_cnt_Col.htm	31	
CRADData\Reports\PurposeLienStatusByTracts_cnt_Col_formula.xml	2	
CRADData\Reports\PurposeLienStatusByTracts_cnt_formula.xml	2	
CRADData\Reports\PurposeLienStatusByTracts_cnt_Grand.htm	31	
CRADData\Reports\PurposeLienStatusByTracts_cnt_Grand_formula.xml	2	
CRADData\Reports\PurposeLienStatusByTracts_cnt_Row.htm	31	
CRADData\Reports\PurposeLienStatusByTracts_cnt_Row_formula.xml	2	
CRADData\Reports\Purp_Type_v_MSA_amt.htm	1	
CRADData\Reports\Purp_Type_v_MSA_amt_Footer.xml	0	
CRADData\Reports\Purp_Type_v_MSA_amt_formula.xml	20	
CRADData\Reports\Purp_Type_v_MSA_amt_Header.xml	1	
CRADData\Reports\Purp_Type_v_MSA_amt_hmz4.htm	1	
CRADData\Reports\Purp_Type_v_MSA_amt_hmz4_Footer.xml	0	
CRADData\Reports\Purp_Type_v_MSA_amt_hmz4_formula.xml	20	
CRADData\Reports\Purp_Type_v_MSA_amt_hmz4_Header.xml	1	
CRADData\Reports\Purp_Type_v_MSA_cnt.htm	1	
CRADData\Reports\Purp_Type_v_MSA_cnt_Footer.xml	0	
CRADData\Reports\Purp_Type_v_MSA_cnt_formula.xml	20	
CRADData\Reports\Purp_Type_v_MSA_cnt_Header.xml	1	
CRADData\Reports\Purp_Type_v_MSA_cnt_hmz4.htm	1	
CRADData\Reports\Purp_Type_v_MSA_cnt_hmz4_Footer.xml	0	
CRADData\Reports\Purp_Type_v_MSA_cnt_hmz4_formula.xml	20	
CRADData\Reports\Purp_Type_v_MSA_cnt_hmz4_Header.xml	1	
CRADData\Reports\Purp_Type_v_MSA_Data_formula.xml	20	
CRADData\Reports\Purp_Type_v_MSA_hmz4_Data_000001.xml	3	
CRADData\Reports\Purp_v_App_Inc_amt.htm	20	

File	Size	Version
CRADData\Reports\Purp_v_App_Inc_amt_formula.xml	1	
CRADData\Reports\Purp_v_App_Inc_amt_hmz4.htm	20	
CRADData\Reports\Purp_v_App_Inc_amt_hmz4_formula.xml	1	
CRADData\Reports\Purp_v_App_Inc_cnt.htm	20	
CRADData\Reports\Purp_v_App_Inc_cnt_amt.htm	24	
CRADData\Reports\Purp_v_App_Inc_cnt_amt_formula.xml	2	
CRADData\Reports\Purp_v_App_Inc_cnt_amt_hmz4.htm	23	
CRADData\Reports\Purp_v_App_Inc_cnt_amt_hmz4_formula.xml	2	
CRADData\Reports\Purp_v_App_Inc_cnt_formula.xml	1	
CRADData\Reports\Purp_v_App_Inc_cnt_hmz4.htm	20	
CRADData\Reports\Purp_v_App_Inc_cnt_hmz4_formula.xml	1	
CRADData\Reports\Purp_v_App_Inc_Col_amt.htm	24	
CRADData\Reports\Purp_v_App_Inc_Col_amt_formula.xml	2	
CRADData\Reports\Purp_v_App_Inc_Col_amt_hmz4.htm	23	
CRADData\Reports\Purp_v_App_Inc_Col_amt_hmz4_formula.xml	2	
CRADData\Reports\Purp_v_App_Inc_Col_cnt.htm	24	
CRADData\Reports\Purp_v_App_Inc_Col_cnt_amt.htm	28	
CRADData\Reports\Purp_v_App_Inc_Col_cnt_amt_formula.xml	7	
CRADData\Reports\Purp_v_App_Inc_Col_cnt_amt_hmz4.htm	26	
CRADData\Reports\Purp_v_App_Inc_Col_cnt_amt_hmz4_formula.xml	6	
CRADData\Reports\Purp_v_App_Inc_Col_cnt_formula.xml	2	
CRADData\Reports\Purp_v_App_Inc_Col_cnt_hmz4.htm	23	
CRADData\Reports\Purp_v_App_Inc_Col_cnt_hmz4_formula.xml	2	
CRADData\Reports\Purp_v_App_Inc_Grand_amt.htm	26	
CRADData\Reports\Purp_v_App_Inc_Grand_amt_formula.xml	2	
CRADData\Reports\Purp_v_App_Inc_Grand_amt_hmz4.htm	25	
CRADData\Reports\Purp_v_App_Inc_Grand_amt_hmz4_formula.xml	2	
CRADData\Reports\Purp_v_App_Inc_Grand_cnt.htm	28	
CRADData\Reports\Purp_v_App_Inc_Grand_cnt_amt.htm	28	
CRADData\Reports\Purp_v_App_Inc_Grand_cnt_amt_formula.xml	7	
CRADData\Reports\Purp_v_App_Inc_Grand_cnt_amt_hmz4.htm	27	
CRADData\Reports\Purp_v_App_Inc_Grand_cnt_amt_hmz4_formula.xml	6	
CRADData\Reports\Purp_v_App_Inc_Grand_cnt_formula.xml	2	
CRADData\Reports\Purp_v_App_Inc_Grand_cnt_hmz4.htm	27	
CRADData\Reports\Purp_v_App_Inc_Grand_cnt_hmz4_formula.xml	2	

File	Size	Version
CRADData\Reports\Purp_v_App_Inc_hmz4_Data.xml	7	
CRADData\Reports\Purp_v_App_Inc_Row_amt.htm	26	
CRADData\Reports\Purp_v_App_Inc_Row_amt_formula.xml	2	
CRADData\Reports\Purp_v_App_Inc_Row_amt_hmz4.htm	25	
CRADData\Reports\Purp_v_App_Inc_Row_amt_hmz4_formula.xml	2	
CRADData\Reports\Purp_v_App_Inc_Row_cnt.htm	28	
CRADData\Reports\Purp_v_App_Inc_Row_cnt_amt.htm	28	
CRADData\Reports\Purp_v_App_Inc_Row_cnt_amt_formula.xml	7	
CRADData\Reports\Purp_v_App_Inc_Row_cnt_amt_hmz4.htm	27	
CRADData\Reports\Purp_v_App_Inc_Row_cnt_amt_hmz4_formula.xml	6	
CRADData\Reports\Purp_v_App_Inc_Row_cnt_formula.xml	2	
CRADData\Reports\Purp_v_App_Inc_Row_cnt_hmz4.htm	27	
CRADData\Reports\Purp_v_App_Inc_Row_cnt_hmz4_formula.xml	2	
CRADData\Reports\Purp_v_Tr_Inc.xml	7	
CRADData\Reports\Purp_v_Tr_Inc_amt.htm	20	
CRADData\Reports\Purp_v_Tr_Inc_amt_formula.xml	1	
CRADData\Reports\Purp_v_Tr_Inc_amt_hmz4.htm	19	
CRADData\Reports\Purp_v_Tr_Inc_amt_hmz4_formula.xml	1	
CRADData\Reports\Purp_v_Tr_Inc_cnt.htm	20	
CRADData\Reports\Purp_v_Tr_Inc_cnt_amt.htm	27	
CRADData\Reports\Purp_v_Tr_Inc_cnt_amt_formula.xml	2	
CRADData\Reports\Purp_v_Tr_Inc_cnt_amt_hmz4.htm	26	
CRADData\Reports\Purp_v_Tr_Inc_cnt_amt_hmz4_formula.xml	2	
CRADData\Reports\Purp_v_Tr_Inc_cnt_formula.xml	1	
CRADData\Reports\Purp_v_Tr_Inc_cnt_hmz4.htm	20	
CRADData\Reports\Purp_v_Tr_Inc_cnt_hmz4_formula.xml	1	
CRADData\Reports\Purp_v_Tr_Inc_Col_amt.htm	25	
CRADData\Reports\Purp_v_Tr_Inc_Col_amt_formula.xml	2	
CRADData\Reports\Purp_v_Tr_Inc_Col_amt_hmz4.htm	25	
CRADData\Reports\Purp_v_Tr_Inc_Col_amt_hmz4_formula.xml	2	
CRADData\Reports\Purp_v_Tr_Inc_Col_cnt.htm	25	
CRADData\Reports\Purp_v_Tr_Inc_Col_cnt_amt.htm	29	
CRADData\Reports\Purp_v_Tr_Inc_Col_cnt_amt_Footer.xml	0	
CRADData\Reports\Purp_v_Tr_Inc_Col_cnt_amt_formula.xml	7	
CRADData\Reports\Purp_v_Tr_Inc_Col_cnt_amt_Header.xml	1	

File	Size	Version
CRADData\Reports\Purp_v_Tr_Inc_Col_cnt_amt_hmz4.htm	28	
CRADData\Reports\Purp_v_Tr_Inc_Col_cnt_amt_hmz4_formula.xml	6	
CRADData\Reports\Purp_v_Tr_Inc_Col_cnt_formula.xml	2	
CRADData\Reports\Purp_v_Tr_Inc_Col_cnt_hmz4.htm	24	
CRADData\Reports\Purp_v_Tr_Inc_Col_cnt_hmz4_formula.xml	2	
CRADData\Reports\Purp_v_Tr_Inc_Grand_amt.htm	25	
CRADData\Reports\Purp_v_Tr_Inc_Grand_amt_formula.xml	2	
CRADData\Reports\Purp_v_Tr_Inc_Grand_amt_hmz4.htm	25	
CRADData\Reports\Purp_v_Tr_Inc_Grand_amt_hmz4_formula.xml	2	
CRADData\Reports\Purp_v_Tr_Inc_Grand_cnt.htm	25	
CRADData\Reports\Purp_v_Tr_Inc_Grand_cnt_amt.htm	29	
CRADData\Reports\Purp_v_Tr_Inc_Grand_cnt_amt_formula.xml	7	
CRADData\Reports\Purp_v_Tr_Inc_Grand_cnt_amt_hmz4.htm	28	
CRADData\Reports\Purp_v_Tr_Inc_Grand_cnt_amt_hmz4_formula.xml	6	
CRADData\Reports\Purp_v_Tr_Inc_Grand_cnt_formula.xml	2	
CRADData\Reports\Purp_v_Tr_Inc_Grand_cnt_hmz4.htm	25	
CRADData\Reports\Purp_v_Tr_Inc_Grand_cnt_hmz4_formula.xml	2	
CRADData\Reports\Purp_v_Tr_Inc_Row_amt.htm	26	
CRADData\Reports\Purp_v_Tr_Inc_Row_amt_formula.xml	2	
CRADData\Reports\Purp_v_Tr_Inc_Row_amt_hmz4.htm	25	
CRADData\Reports\Purp_v_Tr_Inc_Row_amt_hmz4_formula.xml	2	
CRADData\Reports\Purp_v_Tr_Inc_Row_cnt.htm	25	
CRADData\Reports\Purp_v_Tr_Inc_Row_cnt_amt.htm	29	
CRADData\Reports\Purp_v_Tr_Inc_Row_cnt_amt_formula.xml	8	
CRADData\Reports\Purp_v_Tr_Inc_Row_cnt_amt_hmz4.htm	28	
CRADData\Reports\Purp_v_Tr_Inc_Row_cnt_amt_hmz4_formula.xml	6	
CRADData\Reports\Purp_v_Tr_Inc_Row_cnt_formula.xml	2	
CRADData\Reports\Purp_v_Tr_Inc_Row_cnt_hmz4.htm	25	
CRADData\Reports\Purp_v_Tr_Inc_Row_cnt_hmz4_formula.xml	2	
CRADData\Reports\Race_v_Action_amt.htm	26	
CRADData\Reports\Race_v_Action_amt_formula.xml	1	
CRADData\Reports\Race_v_Action_cnt.htm	26	
CRADData\Reports\Race_v_Action_cnt_amt.htm	34	
CRADData\Reports\Race_v_Action_cnt_amt_formula.xml	2	
CRADData\Reports\Race_v_Action_cnt_formula.xml	1	

File	Size	Version
CRADData\Reports\Race_v_Action_Col_amt.htm	27	
CRADData\Reports\Race_v_Action_Col_amt_formula.xml	1	
CRADData\Reports\Race_v_Action_Col_cnt.htm	27	
CRADData\Reports\Race_v_Action_Col_cnt_formula.xml	1	
CRADData\Reports\Race_v_Action_Grand_amt.htm	27	
CRADData\Reports\Race_v_Action_Grand_amt_formula.xml	1	
CRADData\Reports\Race_v_Action_Grand_cnt.htm	27	
CRADData\Reports\Race_v_Action_Grand_cnt_formula.xml	1	
CRADData\Reports\Race_v_Action_Row_amt.htm	27	
CRADData\Reports\Race_v_Action_Row_amt_formula.xml	1	
CRADData\Reports\Race_v_Action_Row_cnt.htm	27	
CRADData\Reports\Race_v_Action_Row_cnt_formula.xml	1	
CRADData\Reports\Race_v_Action_RtoW_amt.htm	27	
CRADData\Reports\Race_v_Action_RtoW_amt_formula.xml	1	
CRADData\Reports\Race_v_Action_RtoW_cnt.htm	27	
CRADData\Reports\Race_v_Action_RtoW_cnt_formula.xml	1	
CRADData\Reports\Race_v_App_Inc_amt.htm	30	
CRADData\Reports\Race_v_App_Inc_amt_formula.xml	2	
CRADData\Reports\Race_v_App_Inc_cnt.htm	30	
CRADData\Reports\Race_v_App_Inc_cnt_formula.xml	2	
CRADData\Reports\Race_v_App_Inc_Col_amt.htm	30	
CRADData\Reports\Race_v_App_Inc_Col_amt_formula.xml	2	
CRADData\Reports\Race_v_App_Inc_Col_cnt.htm	30	
CRADData\Reports\Race_v_App_Inc_Col_cnt_formula.xml	2	
CRADData\Reports\Race_v_App_Inc_Grand_amt.htm	30	
CRADData\Reports\Race_v_App_Inc_Grand_amt_formula.xml	2	
CRADData\Reports\Race_v_App_Inc_Grand_cnt.htm	30	
CRADData\Reports\Race_v_App_Inc_Grand_cnt_formula.xml	2	
CRADData\Reports\Race_v_App_Inc_Row_amt.htm	30	
CRADData\Reports\Race_v_App_Inc_Row_amt_formula.xml	2	
CRADData\Reports\Race_v_App_Inc_Row_cnt.htm	30	
CRADData\Reports\Race_v_App_Inc_Row_cnt_formula.xml	2	
CRADData\Reports\Race_v_App_Inc_RtoW_amt.htm	30	
CRADData\Reports\Race_v_App_Inc_RtoW_amt_formula.xml	2	
CRADData\Reports\Race_v_App_Inc_RtoW_cnt.htm	30	

File	Size	Version
CRADData\Reports\Race_v_App_Inc_RtoW_cnt_formula.xml	2	
CRADData\Reports\Race_v_App_Inc_SCT_amt.htm	30	
CRADData\Reports\Race_v_App_Inc_SCT_amt_formula.xml	2	
CRADData\Reports\Race_v_App_Inc_SCT_cnt.htm	30	
CRADData\Reports\Race_v_App_Inc_SCT_cnt_formula.xml	2	
CRADData\Reports\RATA_Address_Validation.htm	1	
CRADData\Reports\RATA_Address_Validation_by_Branch.htm	1	
CRADData\Reports\RATA_Address_Validation_by_Branch_Footer.xml	0	
CRADData\Reports\RATA_Address_Validation_by_Branch_Formula.xml	16	
CRADData\Reports\RATA_Address_Validation_by_Branch_Header.xml	0	
CRADData\Reports\RATA_Address_Validation_Footer.xml	0	
CRADData\Reports\RATA_Address_Validation_formula.xml	15	
CRADData\Reports\RATA_Address_Validation_Header.xml	0	
CRADData\Reports\RATA_Geocode_Update.htm	1	
CRADData\Reports\RATA_Geocode_Update_By_Branch.htm	1	
CRADData\Reports\RATA_Geocode_Update_By_Branch_Footer.xml	0	
CRADData\Reports\RATA_Geocode_Update_By_Branch_Formula.xml	17	
CRADData\Reports\RATA_Geocode_Update_By_Branch_Header.xml	0	
CRADData\Reports\RATA_Geocode_Update_Footer.xml	0	
CRADData\Reports\RATA_Geocode_Update_Formula.xml	17	
CRADData\Reports\RATA_Geocode_Update_Header.xml	0	
CRADData\Reports\RATA_Geocode_Validation.htm	1	
CRADData\Reports\RATA_Geocode_Validation_By_Branch.htm	1	
CRADData\Reports\RATA_Geocode_Validation_By_Branch_Footer.xml	0	
CRADData\Reports\RATA_Geocode_Validation_By_Branch_formula.xml	15	
CRADData\Reports\RATA_Geocode_Validation_By_Branch_Header.xml	0	
CRADData\Reports\RATA_Geocode_Validation_Footer.xml	0	
CRADData\Reports\RATA_Geocode_Validation_formula.xml	16	
CRADData\Reports\RATA_Geocode_Validation_Header.xml	0	
CRADData\Reports\Ratio_to_white_Option.htm	4	
CRADData\Reports\Ratio_to_white_Option2.htm	3	
CRADData\Reports\Ratio_to_white_Option3.htm	4	
CRADData\Reports\REPORT.doc	274	
CRADData\Reports\REPORT_A.doc	270	
CRADData\Reports\sample.xml	0	

File	Size	Version
CRADData\Reports\SB_Mkt_Shr_County.htm	1	
CRADData\Reports\SB_Mkt_Shr_County_footer.xml	0	
CRADData\Reports\SB_Mkt_Shr_County_formula.xml	18	
CRADData\Reports\SB_Mkt_Shr_County_header.xml	1	
CRADData\Reports\SB_Mkt_Shr_Lender.htm	1	
CRADData\Reports\SB_Mkt_Shr_Lender_footer.xml	0	
CRADData\Reports\SB_Mkt_Shr_Lender_formula.xml	16	
CRADData\Reports\SB_Mkt_Shr_Lender_header.xml	1	
CRADData\Reports\SB_Mkt_Shr_MSA.htm	1	
CRADData\Reports\SB_Mkt_Shr_MSA_footer.xml	0	
CRADData\Reports\SB_Mkt_Shr_MSA_formula.xml	18	
CRADData\Reports\SB_Mkt_Shr_MSA_header.xml	1	
CRADData\Reports\SB_Mkt_Shr_Tract.htm	1	
CRADData\Reports\SB_Mkt_Shr_Tract_footer.xml	0	
CRADData\Reports\SB_Mkt_Shr_Tract_formula.xml	18	
CRADData\Reports\SB_Mkt_Shr_Tract_header.xml	1	
CRADData\Reports\SB_Regular_Std_Summary.htm	55	
CRADData\Reports\SB_Regular_Std_Summary_formula.xml	27	
CRADData\Reports\sb_revenues_first.htm	1	
CRADData\Reports\sb_revenues_first_Footer.xml	0	
CRADData\Reports\sb_revenues_first_formula.xml	28	
CRADData\Reports\sb_revenues_first_Header.xml	1	
CRADData\Reports\sb_revenues_second.htm	1	
CRADData\Reports\sb_revenues_second_Footer.xml	0	
CRADData\Reports\sb_revenues_second_formula.xml	25	
CRADData\Reports\sb_revenues_second_Header.xml	1	
CRADData\Reports\sb_revenues_third.htm	1	
CRADData\Reports\sb_revenues_third_Footer.xml	0	
CRADData\Reports\sb_revenues_third_formula.xml	31	
CRADData\Reports\sb_revenues_third_Header.xml	1	
CRADData\Reports\SB_Std_Summary.htm	46	
CRADData\Reports\SB_Std_Summary_Data.xml	12	
CRADData\Reports\SB_Std_Summary_formula.xml	21	
CRADData\Reports\ScriptX.cab	179	
CRADData\Reports\Sex_v_Appl_Inc_amt.htm	23	



File	Size	Version
CRADData\Reports\Sex_v_Appl_Inc_amt_formula.xml	1	
CRADData\Reports\Sex_v_Appl_Inc_cnt.htm	23	
CRADData\Reports\Sex_v_Appl_Inc_cnt_amt.htm	23	
CRADData\Reports\Sex_v_Appl_Inc_cnt_formula.xml	1	
CRADData\Reports\Sex_v_Appl_Inc_Col_amt.htm	23	
CRADData\Reports\Sex_v_Appl_Inc_Col_amt_formula.xml	1	
CRADData\Reports\Sex_v_Appl_Inc_Col_cnt.htm	23	
CRADData\Reports\Sex_v_Appl_Inc_Col_cnt_formula.xml	1	
CRADData\Reports\Sex_v_Appl_Inc_Grand_amt.htm	23	
CRADData\Reports\Sex_v_Appl_Inc_Grand_amt_formula.xml	1	
CRADData\Reports\Sex_v_Appl_Inc_Grand_cnt.htm	23	
CRADData\Reports\Sex_v_Appl_Inc_Grand_cnt_formula.xml	1	
CRADData\Reports\Sex_v_Appl_Inc_Row_amt.htm	23	
CRADData\Reports\Sex_v_Appl_Inc_Row_amt_formula.xml	1	
CRADData\Reports\Sex_v_Appl_Inc_Row_cnt.htm	23	
CRADData\Reports\Sex_v_Appl_Inc_Row_cnt_formula.xml	1	
CRADData\Reports\smsx.cab	532	
CRADData\Reports\StdSummaryAction.htm	55	
CRADData\Reports\StdSummaryAction2.htm	55	
CRADData\Reports\StdSummaryAction2_formula.xml	5	
CRADData\Reports\StdSummaryAction_Data.xml	25	
CRADData\Reports\StdSummaryAction_formula.xml	5	
CRADData\Reports\Std_Summary_Auto_amt.htm	58	
CRADData\Reports\Std_Summary_Auto_amt2.htm	58	
CRADData\Reports\Std_Summary_auto_amt_formula.xml	5	
CRADData\Reports\Std_Summary_Auto_cnt.htm	58	
CRADData\Reports\Std_Summary_Auto_cnt2.htm	58	
CRADData\Reports\Std_Summary_Auto_cnt_amt.htm	78	
CRADData\Reports\Std_Summary_Auto_cnt_amt2.htm	78	
CRADData\Reports\Std_Summary_auto_cnt_amt_formula.xml	10	
CRADData\Reports\Std_Summary_auto_cnt_formula.xml	5	
CRADData\Reports\Std_Summary_Cons_amt.htm	57	
CRADData\Reports\Std_Summary_Cons_amt2.htm	57	
CRADData\Reports\Std_Summary_cons_amt_formula.xml	5	
CRADData\Reports\Std_Summary_Cons_cnt.htm	57	

File	Size	Version
CRADData\Reports\Std_Summary_Cons_cnt2.htm	57	
CRADData\Reports\Std_Summary_Cons_cnt_amt.htm	77	
CRADData\Reports\Std_Summary_Cons_cnt_amt2.htm	77	
CRADData\Reports\Std_Summary_cons_cnt_amt_formula.xml	10	
CRADData\Reports\Std_Summary_cons_cnt_formula.xml	5	
CRADData\Reports\Sum SB Lending AA Amount PCol.htm	54	
CRADData\Reports\Sum SB Lending AA Amount PGrand.htm	54	
CRADData\Reports\Sum SB Lending AA Amount PRow.htm	54	
CRADData\Reports\Sum SB Lending AA Amount.htm	54	
CRADData\Reports\Sum SB Lending AA Tract.htm	43	
CRADData\Reports\Sum SB Lending County Amount PColumn.htm	54	
CRADData\Reports\Sum SB Lending County Amount PGrand.htm	54	
CRADData\Reports\Sum SB Lending County Amount PRow.htm	54	
CRADData\Reports\Sum SB Lending County Amount.htm	54	
CRADData\Reports\Sum SB Lending County Tract.htm	43	
CRADData\Reports\Sum SB Lending MSA Amount PColumn.htm	54	
CRADData\Reports\Sum SB Lending MSA Amount PGrand.htm	54	
CRADData\Reports\Sum SB Lending MSA Amount PRow.htm	54	
CRADData\Reports\Sum SB Lending MSA Amount.htm	54	
CRADData\Reports\Sum SB Lending MSA Tract.htm	43	
CRADData\Reports\Sum SB Lending State Amount PColumn.htm	54	
CRADData\Reports\Sum SB Lending State Amount PGrand.htm	54	
CRADData\Reports\Sum SB Lending State Amount PRow.htm	54	
CRADData\Reports\Sum SB Lending State Amount.htm	54	
CRADData\Reports\Sum SB Lending State Tract.htm	43	
CRADData\Reports\Sum1_Action.htm	59	
CRADData\Reports\Sum1_Action_amt.htm	57	
CRADData\Reports\Sum1_Action_amt_formula.xml	6	
CRADData\Reports\Sum1_Action_cnt.htm	57	
CRADData\Reports\Sum1_Action_cnt_formula.xml	6	
CRADData\Reports\Sum1_Action_formula.xml	6	
CRADData\Reports\Sum_H4PR_Action_amt.htm	65	
CRADData\Reports\Sum_H4PR_Action_amt_formula.xml	10	
CRADData\Reports\Sum_H4PR_Action_cnt.htm	66	
CRADData\Reports\Sum_H4PR_Action_cnt_formula.xml	9	

File	Size	Version
CRADData\Reports\Sum_H4PR_AppInc_amt.htm	69	
CRADData\Reports\Sum_H4PR_AppInc_amt_formula.xml	11	
CRADData\Reports\Sum_H4PR_AppInc_cnt.htm	66	
CRADData\Reports\Sum_H4PR_AppInc_cnt_formula.xml	10	
CRADData\Reports\Sum_H4PR_AppRace_amt.htm	50	
CRADData\Reports\Sum_H4PR_AppRace_amt_formula.xml	6	
CRADData\Reports\Sum_H4PR_AppRace_cnt.htm	50	
CRADData\Reports\Sum_H4PR_AppRace_cnt_formula.xml	6	
CRADData\Reports\Sum_H4PR_TraInc_amt.htm	66	
CRADData\Reports\Sum_H4PR_TraInc_amt_formula.xml	11	
CRADData\Reports\Sum_H4PR_TraInc_cnt.htm	68	
CRADData\Reports\Sum_H4PR_TraInc_cnt_formula.xml	10	
CRADData\Reports\Sum_H4PR_TypePurp_amt.htm	63	
CRADData\Reports\Sum_H4PR_TypePurp_amt_formula.xml	10	
CRADData\Reports\Sum_H4PR_TypePurp_cnt.htm	63	
CRADData\Reports\Sum_H4PR_TypePurp_cnt_formula.xml	9	
CRADData\Reports\Sum_Peer_Action_amt.htm	54	
CRADData\Reports\Sum_Peer_Action_amt_formula.xml	6	
CRADData\Reports\Sum_Peer_Action_cnt.htm	54	
CRADData\Reports\Sum_Peer_Action_cnt_formula.xml	6	
CRADData\Reports\Sum_peer_AppInc_amt.htm	62	
CRADData\Reports\Sum_Peer_AppInc_amt_formula.xml	7	
CRADData\Reports\Sum_peer_AppInc_cnt.htm	56	
CRADData\Reports\Sum_Peer_AppInc_cnt_formula.xml	6	
CRADData\Reports\Sum_peer_AppRace_amt.htm	60	
CRADData\Reports\Sum_Peer_AppRace_amt_formula.xml	7	
CRADData\Reports\Sum_peer_AppRace_cnt.htm	54	
CRADData\Reports\Sum_Peer_AppRace_cnt_formula.xml	6	
CRADData\Reports\Sum_peer_TraInc_amt.htm	62	
CRADData\Reports\Sum_Peer_TraInc_amt_formula.xml	7	
CRADData\Reports\Sum_peer_TraInc_cnt.htm	57	
CRADData\Reports\Sum_Peer_TraInc_cnt_formula.xml	7	
CRADData\Reports\Sum_peer_TypePurp_amt.htm	61	
CRADData\Reports\Sum_Peer_TypePurp_amt_formula.xml	7	
CRADData\Reports\Sum_peer_TypePurp_cnt.htm	57	

File	Size	Version
CRADData\Reports\Sum_Peer_TypePurp_cnt_formula.xml	7	
CRADData\Reports\Tract Type Cov wi AA.htm	22	
CRADData\Reports\TrctIncmLienByPurpPropPrc_Amt.htm	51	
CRADData\Reports\TrctIncmLienByPurpPropPrc_Amt_Col.htm	51	
CRADData\Reports\TrctIncmLienByPurpPropPrc_Amt_Col_formula.xml	7	
CRADData\Reports\TrctIncmLienByPurpPropPrc_Amt_formula.xml	9	
CRADData\Reports\TrctIncmLienByPurpPropPrc_Amt_Row.htm	51	
CRADData\Reports\TrctIncmLienByPurpPropPrc_Amt_Row_formula.xml	7	
CRADData\Reports\TrctIncmLienByPurpPropPrc_Cnt.htm	51	
CRADData\Reports\TrctIncmLienByPurpPropPrc_Cnt_Col.htm	51	
CRADData\Reports\TrctIncmLienByPurpPropPrc_Cnt_Col_formula.xml	7	
CRADData\Reports\TrctIncmLienByPurpPropPrc_Cnt_formula.xml	9	
CRADData\Reports\TrctIncmLienByPurpPropPrc_Cnt_Row.htm	51	
CRADData\Reports\TrctIncmLienByPurpPropPrc_Cnt_Row_formula.xml	7	
CRADData\Reports\Tr_Inc_v_app_Inc_amt.htm	27	
CRADData\Reports\Tr_Inc_v_App_Inc_amt_formula.xml	1	
CRADData\Reports\Tr_Inc_v_app_Inc_cnt.htm	23	
CRADData\Reports\Tr_Inc_v_app_Inc_cnt_amt.htm	24	
CRADData\Reports\Tr_Inc_v_App_Inc_cnt_amt_formula.xml	2	
CRADData\Reports\Tr_Inc_v_App_Inc_cnt_formula.xml	1	
CRADData\Reports\Tr_Inc_v_app_Inc_Col_amt.htm	26	
CRADData\Reports\Tr_Inc_v_App_Inc_Col_amt_formula.xml	2	
CRADData\Reports\Tr_Inc_v_app_Inc_Col_cnt.htm	26	
CRADData\Reports\Tr_Inc_v_app_Inc_Col_cnt_amt.htm	30	
CRADData\Reports\Tr_Inc_v_app_Inc_Col_cnt_amt_formula.xml	9	
CRADData\Reports\Tr_Inc_v_App_Inc_Col_cnt_formula.xml	2	
CRADData\Reports\Tr_Inc_v_app_Inc_Grand_amt.htm	25	
CRADData\Reports\Tr_Inc_v_App_Inc_Grand_amt_formula.xml	2	
CRADData\Reports\Tr_Inc_v_app_Inc_Grand_cnt.htm	26	
CRADData\Reports\Tr_Inc_v_app_Inc_Grand_cnt_amt.htm	30	
CRADData\Reports\Tr_Inc_v_App_Inc_Grand_cnt_amt_formula.xml	9	
CRADData\Reports\Tr_Inc_v_App_Inc_Grand_cnt_formula.xml	2	
CRADData\Reports\Tr_Inc_v_app_Inc_Row_amt.htm	25	
CRADData\Reports\Tr_Inc_v_App_Inc_Row_amt_formula.xml	2	
CRADData\Reports\Tr_Inc_v_app_Inc_Row_cnt.htm	25	

File	Size	Version
CRADData\Reports\Tr_Inc_v_app_Inc_Row_cnt_amt.htm	30	
CRADData\Reports\Tr_Inc_v_App_Inc_Row_cnt_amt_formula.xml	8	
CRADData\Reports\Tr_Inc_v_App_Inc_Row_cnt_formula.xml	2	
CRADData\Reports\Tr_Inc_v_Products.htm	22	
CRADData\Reports\Tr_Inc_v_Products_Busi.htm	25	
CRADData\Reports\Tr_Inc_v_Products_Busi_formula.xml	2	
CRADData\Reports\Tr_Inc_v_Products_Cons.htm	24	
CRADData\Reports\Tr_Inc_v_Products_Cons_formula.xml	1	
CRADData\Reports\Tr_Inc_v_Products_Data.xml	3	
CRADData\Reports\Tr_Inc_v_Products_formula.xml	1	
CRADData\Reports\Tr_Inc_v_Products_Hmda.htm	24	
CRADData\Reports\Tr_Inc_v_Products_Hmda_formula.xml	1	
CRADData\Reports\Tr_Min_v_Products.htm	23	
CRADData\Reports\Tr_Min_v_Products_Busi.htm	26	
CRADData\Reports\Tr_Min_v_Products_Busi_formula.xml	2	
CRADData\Reports\Tr_Min_v_Products_Cons.htm	25	
CRADData\Reports\Tr_Min_v_Products_Cons_formula.xml	1	
CRADData\Reports\Tr_Min_v_Products_formula.xml	1	
CRADData\Reports\Tr_Min_v_Products_Hmda.htm	25	
CRADData\Reports\Tr_Min_v_Products_Hmda_formula.xml	1	
CRADData\Reports\Tr_Min_v_Tr_Inc_amt.htm	25	
CRADData\Reports\Tr_Min_v_Tr_Inc_amt_formula.xml	2	
CRADData\Reports\Tr_Min_v_Tr_Inc_cnt.htm	26	
CRADData\Reports\Tr_Min_v_Tr_Inc_cnt_amt.htm	34	
CRADData\Reports\Tr_Min_v_Tr_Inc_cnt_amt_formula.xml	9	
CRADData\Reports\Tr_Min_v_Tr_Inc_cnt_formula.xml	2	
CRADData\Reports\Tr_Min_v_Tr_Inc_Col_amt.htm	26	
CRADData\Reports\Tr_Min_v_Tr_Inc_Col_amt_formula.xml	2	
CRADData\Reports\Tr_Min_v_Tr_Inc_Col_cnt.htm	26	
CRADData\Reports\Tr_Min_v_Tr_Inc_Col_cnt_amt.htm	34	
CRADData\Reports\Tr_Min_v_Tr_Inc_Col_cnt_amt_formula.xml	12	
CRADData\Reports\Tr_Min_v_Tr_Inc_Col_cnt_formula.xml	2	
CRADData\Reports\Tr_Min_v_Tr_Inc_Grand_amt.htm	26	
CRADData\Reports\Tr_Min_v_Tr_Inc_Grand_amt_formula.xml	2	
CRADData\Reports\Tr_Min_v_Tr_Inc_Grand_cnt.htm	26	

File	Size	Version
CRADData\Reports\Tr_Min_v_Tr_Inc_Grand_cnt_amt.htm	34	
CRADData\Reports\Tr_Min_v_Tr_Inc_Grand_cnt_amt_formula.xml	13	
CRADData\Reports\Tr_Min_v_Tr_Inc_Grand_cnt_formula.xml	2	
CRADData\Reports\Tr_Min_v_Tr_Inc_Row_amt.htm	25	
CRADData\Reports\Tr_Min_v_Tr_Inc_Row_amt_formula.xml	2	
CRADData\Reports\Tr_Min_v_Tr_Inc_Row_cnt.htm	26	
CRADData\Reports\Tr_Min_v_Tr_Inc_Row_cnt_amt.htm	34	
CRADData\Reports\Tr_Min_v_Tr_Inc_Row_cnt_amt_formula.xml	13	
CRADData\Reports\Tr_Min_v_Tr_Inc_Row_cnt_formula.xml	2	
CRADData\Reports\Tr_Min_v_Tr_Inc_SCT_amt.htm	25	
CRADData\Reports\Tr_Min_v_Tr_Inc_SCT_amt_formula.xml	2	
CRADData\Reports\Tr_Min_v_Tr_Inc_SCT_cnt.htm	25	
CRADData\Reports\Tr_Min_v_Tr_Inc_SCT_cnt_formula.xml	2	
CRADData\Reports\Type_v_App_Inc_amt.htm	21	
CRADData\Reports\Type_v_App_Inc_amt_formula.xml	1	
CRADData\Reports\Type_v_App_Inc_cnt.htm	21	
CRADData\Reports\Type_v_App_Inc_cnt_amt.htm	26	
CRADData\Reports\Type_v_App_Inc_cnt_amt_formula.xml	2	
CRADData\Reports\Type_v_App_Inc_cnt_formula.xml	1	
CRADData\Reports\Type_v_App_Inc_Col_amt.htm	27	
CRADData\Reports\Type_v_App_Inc_Col_amt_formula.xml	2	
CRADData\Reports\Type_v_App_Inc_Col_cnt.htm	27	
CRADData\Reports\Type_v_App_Inc_Col_cnt_amt.htm	33	
CRADData\Reports\Type_v_App_Inc_Col_cnt_amt_formula.xml	15	
CRADData\Reports\Type_v_App_Inc_Col_cnt_formula.xml	2	
CRADData\Reports\Type_v_App_Inc_Grand_amt.htm	27	
CRADData\Reports\Type_v_App_Inc_Grand_amt_formula.xml	2	
CRADData\Reports\Type_v_App_Inc_Grand_cnt.htm	26	
CRADData\Reports\Type_v_App_Inc_Grand_cnt_amt.htm	33	
CRADData\Reports\Type_v_App_Inc_Grand_cnt_amt_formula.xml	15	
CRADData\Reports\Type_v_App_Inc_Grand_cnt_formula.xml	2	
CRADData\Reports\Type_v_App_Inc_Row_amt.htm	27	
CRADData\Reports\Type_v_App_Inc_Row_amt_formula.xml	2	
CRADData\Reports\Type_v_App_Inc_Row_cnt.htm	27	
CRADData\Reports\Type_v_App_Inc_Row_cnt_amt.htm	34	

File	Size	Version
CRADData\Reports\Type_v_App_Inc_Row_cnt_amt_formula.xml	15	
CRADData\Reports\Type_v_App_Inc_Row_cnt_formula.xml	2	
CRADData\Reports\Type_v_Tr_Inc_amt.htm	24	
CRADData\Reports\Type_v_Tr_Inc_amt_formula.xml	1	
CRADData\Reports\Type_v_Tr_Inc_cnt.htm	22	
CRADData\Reports\Type_v_Tr_Inc_cnt_amt.htm	29	
CRADData\Reports\Type_v_Tr_Inc_cnt_amt_formula.xml	2	
CRADData\Reports\Type_v_Tr_Inc_cnt_formula.xml	1	
CRADData\Reports\Type_v_Tr_Inc_Col_amt.htm	27	
CRADData\Reports\Type_v_Tr_Inc_Col_amt_formula.xml	2	
CRADData\Reports\Type_v_Tr_Inc_Col_cnt.htm	27	
CRADData\Reports\Type_v_Tr_Inc_Col_cnt_amt.htm	37	
CRADData\Reports\Type_v_Tr_Inc_Col_cnt_amt_formula.xml	15	
CRADData\Reports\Type_v_Tr_Inc_Col_cnt_formula.xml	2	
CRADData\Reports\Type_v_Tr_Inc_Grand_amt.htm	28	
CRADData\Reports\Type_v_Tr_Inc_Grand_amt_formula.xml	2	
CRADData\Reports\type_v_Tr_Inc_Grand_cnt.htm	26	
CRADData\Reports\type_v_tr_inc_grand_cnt_amt.htm	36	
CRADData\Reports\Type_v_Tr_Inc_Grand_cnt_amt_formula.xml	15	
CRADData\Reports\Type_v_Tr_Inc_Grand_cnt_formula.xml	2	
CRADData\Reports\Type_v_Tr_Inc_Row_amt.htm	27	
CRADData\Reports\Type_v_Tr_Inc_Row_amt_formula.xml	2	
CRADData\Reports\Type_v_Tr_Inc_Row_cnt.htm	27	
CRADData\Reports\type_v_tr_inc_row_cnt_amt.htm	36	
CRADData\Reports\Type_v_Tr_Inc_Row_cnt_amt_formula.xml	15	
CRADData\Reports\Type_v_Tr_Inc_Row_cnt_formula.xml	2	
CRADData\Reports\UpprTract_Lending.htm	1	
CRADData\Reports\UpprTract_Lending1.htm	1	
CRADData\Reports\UpprTract_Lending_Footer.xml	0	
CRADData\Reports\UpprTract_Lending_formula.xml	24	
CRADData\Reports\UpprTract_Lending_Header.xml	1	
CRADData\Reports\WorkshA1.htm	1	
CRADData\Reports\WorkshA1_Eth.htm	1	
CRADData\Reports\WorkshA1_Eth_footer.xml	0	
CRADData\Reports\WorkshA1_Eth_formula.xml	21	

File	Size	Version
CRADData\Reports\WorkshA1_Eth_Header.xml	1	
CRADData\Reports\WorkshA1_Footer.xml	0	
CRADData\Reports\WorkshA1_formula.xml	24	
CRADData\Reports\WorkshA1_Header.xml	1	
CRADData\Reports\WorkshA1_Race.htm	1	
CRADData\Reports\WorkshA1_Race_footer.xml	0	
CRADData\Reports\WorkshA1_Race_formula.xml	24	
CRADData\Reports\WorkshA1_Race_Header.xml	1	
CRADData\Reports\WorkshA2.htm	1	
CRADData\Reports\WorkshA2_Footer.xml	0	
CRADData\Reports\WorkshA2_formula.xml	21	
CRADData\Reports\WorkshA2_Header.xml	1	
CRADData\Reports\WorkshA3.htm	1	
CRADData\Reports\WorkshA3_Footer.xml	0	
CRADData\Reports\WorkshA3_formula.xml	22	
CRADData\Reports\WorkshA3_Header.xml	1	
CRADData\Reports\WorkshA4.htm	1	
CRADData\Reports\WorkshA4_Footer.xml	0	
CRADData\Reports\WorkshA4_formula.xml	26	
CRADData\Reports\WorkshA4_Header.xml	1	
CRADData\Reports\WorkshA5.htm	1	
CRADData\Reports\WorkshA5_Footer.xml	0	
CRADData\Reports\WorkshA5_formula.xml	21	
CRADData\Reports\WorkshA5_Header.xml	1	
CRADData\Reports\WorkshA6.htm	1	
CRADData\Reports\WorkshA6_Footer.xml	0	
CRADData\Reports\WorkshA6_formula.xml	23	
CRADData\Reports\WorkshA6_Header.xml	1	
CRADData\Reports\WorkshA7.htm	1	
CRADData\Reports\WorkshA7_Footer.xml	0	
CRADData\Reports\WorkshA7_formula.xml	29	
CRADData\Reports\WorkshA7_Header.xml	1	
CRADData\Reports\WorkshA8.htm	1	
CRADData\Reports\WorkshA8_Footer.xml	0	
CRADData\Reports\WorkshA8_formula.xml	21	



File	Size	Version
CRADData\Reports\WorkshA8_Header.xml	1	
CRADData\Reports\WorkshA_Eth1.htm	1	
CRADData\Reports\WorkshA_Race1.htm	1	
CRADData\Reports\WorkshD.htm	1	
CRADData\Reports\WorkshD1_Eth.htm	1	
CRADData\Reports\WorkshD1_Eth_footer.xml	0	
CRADData\Reports\WorkshD1_Eth_formula.xml	21	
CRADData\Reports\WorkshD1_Eth_header.xml	1	
CRADData\Reports\WorkshD1_Race.htm	1	
CRADData\Reports\WorkshD1_Race_footer.xml	0	
CRADData\Reports\WorkshD1_Race_formula.xml	24	
CRADData\Reports\WorkshD1_Race_header.xml	1	
CRADData\Reports\WorkshD2.htm	1	
CRADData\Reports\WorkshD2_Footer.xml	0	
CRADData\Reports\WorkshD2_formula.xml	33	
CRADData\Reports\WorkshD2_Header.xml	1	
CRADData\Reports\WorkshD2_hmz4.htm	1	
CRADData\Reports\WorkshD2_hmz4_footer.xml	0	
CRADData\Reports\WorkshD2_hmz4_formula.xml	36	
CRADData\Reports\WorkshD2_hmz4_header.xml	1	
CRADData\Reports\WorkshD_Footer.xml	0	
CRADData\Reports\WorkshD_formula.xml	21	
CRADData\Reports\WorkshD_Header.xml	1	
CRADData\Reports\WorkshK.htm	1	
CRADData\Reports\WorkshK1.htm	1	
CRADData\Reports\WorkshK1_Footer.xml	0	
CRADData\Reports\WorkshK1_formula.xml	17	
CRADData\Reports\WorkshK1_Header.xml	1	
CRADData\Reports\WorkshK1_hmz4.htm	1	
CRADData\Reports\WorkshK1_hmz4_footer.xml	0	
CRADData\Reports\WorkshK1_hmz4_formula.xml	35	
CRADData\Reports\WorkshK1_hmz4_header.xml	1	
CRADData\Reports\WorkshK2.htm	1	
CRADData\Reports\WorkshK2_footer.xml	0	
CRADData\Reports\WorkshK2_formula.xml	17	

File	Size	Version
CRADData\Reports\WorkshK2_header.xml	1	
CRADData\Reports\WorkshK_Footer.xml	0	
CRADData\Reports\WorkshK_formula.xml	33	
CRADData\Reports\WorkshK_Header.xml	1	
CRADData\Reports\WorkshL.htm	1	
CRADData\Reports\WorkshL_Footer.xml	0	
CRADData\Reports\WorkshL_formula.xml	17	
CRADData\Reports\WorkshL_Header.xml	0	
CRADData\Reports\CrystalEngine\Custom_Lar_Report.rpt	14	
CRADData\Reports\CrystalEngine\DemogCompare.rpt	54	
CRADData\Reports\CrystalEngine\DemogCompare_1990.rpt	54	
CRADData\Reports\CrystalEngine\DemogCompare_2000.rpt	16	
CRADData\Reports\CrystalEngine\detail_change_history_by_applnumb_report.rpt	16	
CRADData\Reports\CrystalEngine\exception_detail_CRA.rpt	16	
CRADData\Reports\CrystalEngine\exception_detail_HMDA.rpt	16	
CRADData\Reports\CrystalEngine\exception_detail_hmz4.rpt	32	
CRADData\Reports\CrystalEngine\exception_recordLevel.rpt	11	
CRADData\Reports\CrystalEngine\exception_records.rpt	16	
CRADData\Reports\CrystalEngine\exception_summary.rpt	16	
CRADData\Reports\CrystalEngine\geocoding_exception.rpt	16	
CRADData\Reports\CrystalEngine\geocoding_statistics.rpt	32	
CRADData\Reports\CrystalEngine\History_analysis.rpt	12	
CRADData\Reports\CrystalEngine\H_DETAIL_2004.rpt	16	
CRADData\Reports\CrystalEngine\h_lar_report.rpt	16	
CRADData\Reports\CrystalEngine\h_lar_report_hmz4.rpt	32	
CRADData\Reports\CrystalEngine\lr_report.rpt	12	
CRADData\Reports\CrystalEngine\market_share.rpt	50	
CRADData\Reports\CrystalEngine\Micro_lr_report.rpt	12	
CRADData\Reports\CrystalEngine\SUBMISSION_LARDetailed.rpt	15	
CRADData\Reports\CrystalEngine\summary_change_history_by_date_report.rpt	10	
CRADData\Reports\CrystalEngine\summary_change_history_by_user_report.rpt	10	
CRADData\Reports\Images\analysis.jpg	10	
CRADData\Reports\Images\BrackDown_N.gif	0	
CRADData\Reports\Images\BrackDown_RL.gif	0	
CRADData\Reports\Images\Breakdown.gif	0	

File	Size	Version
CRADData\Reports\Images\BreakDown_DW.gif	1	
CRADData\Reports\Images\Breakdown_Dw_Gif.gif	1	
CRADData\Reports\Images\Breakdown_Dw_Gif_1.gif	1	
CRADData\Reports\Images\BreakDown_UP.gif	1	
CRADData\Reports\Images\Calculation_Dw_Gif.gif	1	
CRADData\Reports\Images\Calculation_N.gif	0	
CRADData\Reports\Images\Calculation_RL.gif	1	
CRADData\Reports\Images\Calculation_Up_Gif.gif	0	
CRADData\Reports\Images\droparrow.jpg	5	
CRADData\Reports\Images\GenerateReport_N.jpg	7	
CRADData\Reports\Images\GenerateReport_RL.jpg	7	
CRADData\Reports\Images\go_button.jpg	6	
CRADData\Reports\Images\go_button2.jpg	6	
CRADData\Reports\Images\Lines_middle.jpg	6	
CRADData\Reports\Images\Line_Jpg.jpg	5	
CRADData\Reports\Images\M 2.GIF	1	
CRADData\Reports\Images\m3.gif	0	
CRADData\Reports\Images\m4.gif	0	
CRADData\Reports\Images\M5.gif	0	
CRADData\Reports\Images\M6.gif	0	
CRADData\Reports\Images\masgeTool3.jpg	7	
CRADData\Reports\Images\masgeToolClick.GIF	1	
CRADData\Reports\Images\masgeToolNormal.GIF	1	
CRADData\Reports\Images\masgeToolOver.GIF	1	
CRADData\Reports\Images\masgeToolWab Report.psd	21	
CRADData\Reports\Images\MENU 1.GIF	1	
CRADData\Reports\Images\PCiExporter.CAB	19	
CRADData\Reports\Images\Picture1.jpg	11	
CRADData\Reports\Images\reportAllDecrip.jpg	8	
CRADData\Reports\Images\report_menuDw_G.gif	0	
CRADData\Reports\Images\repot_menuUp_G.gif	1	
CRADData\Reports\Images\Screen_1.GIF	1	
CRADData\Reports\Images>SelectAnaly_Dw_Gif.gif	2	
CRADData\Reports\Images>SelectAnaly_Up_Gif.gif	4	
CRADData\Reports\Images>SelectAnasis_N.gif	1	

File	Size	Version
CRADData\Reports\Images\SelectAnasis_RL.gif	1	
CRADData\Reports\Images\Short_menuDw_G.gif	0	
CRADData\Reports\Images\Short_menuUp.gif	0	
CRADData\Reports\Images\template5_05-over.gif	1	
CRADData\Reports\Images\template5_05.gif	0	
CRADData\Reports\Images\template5_06.gif	1	
CRADData\Reports\Images\template5_07-over.gif	0	
CRADData\Reports\Images\template5_07.gif	0	
CRADData\Reports\Images\template5_09-over.gif	0	
CRADData\Reports\Images\template5_09.gif	0	
CRADData\Reports\Images\template5_12-template5_03_u.gif	7	
CRADData\Reports\Images\toolBarSTR.jpg	5	
CRADData\Reports\Images\toolBar_1 copy.jpg	5	
CRADData\Reports\Images\toolBar_1.jpg	7	
CRADData\Reports\Images\toolBar_22.jpg	5	
CRADes\COMMON.dll	264	1.0.5086.16473
CRADes\CRA.exe	1522	1.1.5101.15558
CRADes\CRA.exe.config	3	
CRADes\CRADES.chm	1229	
CRADes\Encryp.chm	66	
CRADes\Encryption Utility.exe	150	1.0.5081.28177
CRADes\Encryption Utility.exe.config	2	
CRADes\GrapeCity.ActiveReports.Chart.v7.dll	2625	7.1.7572.0
CRADes\GrapeCity.ActiveReports.Design.Win.v7.dll	9394	7.1.7572.0
CRADes\GrapeCity.ActiveReports.Diagnostics.v7.dll	44	7.1.7572.0
CRADes\GrapeCity.ActiveReports.Document.v7.dll	490	7.1.7572.0
CRADes\GrapeCity.ActiveReports.Export.Image.Unsafe.v7.dll	8	7.1.7572.0
CRADes\GrapeCity.ActiveReports.Export.Image.v7.dll	222	7.1.7572.0
CRADes\GrapeCity.ActiveReports.Export.Pdf.v7.dll	6359	7.1.7572.0
CRADes\GrapeCity.ActiveReports.Export.Rdf.v7.dll	62	7.1.7572.0
CRADes\GrapeCity.ActiveReports.Export.Word.v7.dll	183	7.1.7572.0
CRADes\GrapeCity.ActiveReports.Extensibility.v7.dll	116	7.1.7572.0
CRADes\GrapeCity.ActiveReports.v7.dll	6008	7.1.7572.0
CRADes\GrapeCity.ActiveReports.Viewer.Win.v7.dll	2868	7.1.7572.0
CRADes\README.txt	1	

File	Size	Version
CRADes\sqlceca35.dll	335	3.5.5692.0
CRADes\sqlcecompact35.dll	83	3.5.5692.0
CRADes\sqlceer35EN.dll	145	3.5.5692.0
CRADes\sqlceme35.dll	64	3.5.5692.0
CRADes\sqlceoledb35.dll	169	3.5.5692.0
CRADes\sqlceqp35.dll	629	3.5.5692.0
CRADes\sqlcese35.dll	340	3.5.5692.0
CRADes\System.Data.SqlServerCe.dll	265	3.5.5692.0
CRADes\Census\census14.sdf	6344	
CRADes\Data\template.sdf	320	
FairWiz\autodca.exe	3165	70.0.0.60
FairWiz\autodch.exe	3165	70.0.0.60
FairWiz\autodcm.exe	3165	70.0.0.60
FairWiz\autodcr.exe	3165	70.0.0.60
FairWiz\autodcs.exe	3165	70.0.0.60
FairWiz\autodct.exe	3165	70.0.0.60
FairWiz\autodm.exe	1041	70.0.0.60
FairWiz\autodr.exe	4506	70.0.0.60
FairWiz\autopca.exe	3128	70.0.0.60
FairWiz\autopch.exe	3128	70.0.0.60
FairWiz\autopcm.exe	3128	70.0.0.60
FairWiz\autopcr.exe	3128	70.0.0.60
FairWiz\autopcs.exe	3128	70.0.0.60
FairWiz\autopct.exe	3128	70.0.0.60
FairWiz\autoppr.exe	3678	70.0.0.60
FairWiz\cfr.htm	2	
FairWiz\cfr_cons.htm	3	
FairWiz\cfr_smb.htm	2	
FairWiz\Config.fpw	0	
FairWiz\consdca.exe	3004	70.0.0.60
FairWiz\consdch.exe	3004	70.0.0.60
FairWiz\consdcm.exe	3004	70.0.0.60
FairWiz\consdcr.exe	3004	70.0.0.60
FairWiz\consdcs.exe	3004	70.0.0.60
FairWiz\consdct.exe	3004	70.0.0.60

File	Size	Version
FairWiz\consdm.exe	1050	70.0.0.60
FairWiz\constr.exe	3686	70.0.0.60
FairWiz\conspca.exe	2951	70.0.0.60
FairWiz\conspch.exe	2951	70.0.0.60
FairWiz\conspcm.exe	2951	70.0.0.60
FairWiz\conspcr.exe	2951	70.0.0.60
FairWiz\conspcs.exe	2951	70.0.0.60
FairWiz\conspct.exe	2951	70.0.0.60
FairWiz\conspr.exe	3503	70.0.0.60
FairWiz\cstat.dll	2064	
FairWiz\dc_list.htm	5	
FairWiz\Decisioning Comparison Analysis by Age - AUTO.bat	0	
FairWiz\Decisioning Comparison Analysis by Age - BUSI.bat	0	
FairWiz\Decisioning Comparison Analysis by Age - CONS.bat	0	
FairWiz\Decisioning Comparison Analysis by Age - HMZ4.bat	0	
FairWiz\Decisioning Comparison Analysis by Applicant Income - AUTO.bat	0	
FairWiz\Decisioning Comparison Analysis by Applicant Income - BUSI.bat	0	
FairWiz\Decisioning Comparison Analysis by Applicant Income - CONS.bat	0	
FairWiz\Decisioning Comparison Analysis by Applicant Income - HMZ4.bat	0	
FairWiz\Decisioning Comparison Analysis by Marital Status - AUTO.bat	0	
FairWiz\Decisioning Comparison Analysis by Marital Status - BUSI.bat	0	
FairWiz\Decisioning Comparison Analysis by Marital Status - CONS.bat	0	
FairWiz\Decisioning Comparison Analysis by Marital Status - HMZ4.bat	0	
FairWiz\Decisioning Comparison Analysis by Race - AUTO.bat	0	
FairWiz\Decisioning Comparison Analysis by Race - BUSI.bat	0	
FairWiz\Decisioning Comparison Analysis by Race - CONS.bat	0	
FairWiz\Decisioning Comparison Analysis by Race - HMZ4.bat	0	
FairWiz\Decisioning Comparison Analysis by Sex - AUTO.bat	0	
FairWiz\Decisioning Comparison Analysis by Sex - BUSI.bat	0	
FairWiz\Decisioning Comparison Analysis by Sex - CONS.bat	0	
FairWiz\Decisioning Comparison Analysis by Sex - HMZ4.bat	0	
FairWiz\Decisioning Comparison Analysis by Tract Income - AUTO.bat	0	
FairWiz\Decisioning Comparison Analysis by Tract Income - BUSI.bat	0	
FairWiz\Decisioning Comparison Analysis by Tract Income - CONS.bat	0	
FairWiz\Decisioning Comparison Analysis by Tract Income - HMZ4.bat	0	

File	Size	Version
FairWiz\demog90.cdx	6514	
FairWiz\demog90.dbf	60606	
FairWiz\Difference of Means - AUTO.bat	0	
FairWiz\Difference of Means - BUSI.bat	0	
FairWiz\Difference of Means - CONS.bat	0	
FairWiz\Difference of Means - HMZ4.bat	0	
FairWiz\fairwiz.ico	2	
FairWiz\FLW.ico	2	
FairWiz\flwiz4.ico	1	
FairWiz\flw_cra.css	2	
FairWiz\focal.htm	2	
FairWiz\focalpoint.exe	743	
FairWiz\focal_new.htm	2	
FairWiz\Fox32.dbf	15	
FairWiz\fox32.FLL	68	
FairWiz\Fox32.fpt	337	
FairWiz\Foxstat3.fll	48	
FairWiz\Foxtools.fll	57	
FairWiz\FOXUSER.DBF	1	
FairWiz\FOXUSER.FPT	5	
FairWiz\getlardata.exe	52	
FairWiz\Graphx.ocx	36	1.1.0.1
FairWiz\hmdadca.exe	3099	70.0.0.60
FairWiz\hmdadch.exe	3099	70.0.0.60
FairWiz\hmdadcm.exe	3099	70.0.0.60
FairWiz\hmdadcr.exe	3099	70.0.0.60
FairWiz\hmdadcs.exe	3099	70.0.0.60
FairWiz\hmdadct.exe	3099	70.0.0.60
FairWiz\hmdadm.exe	1407	70.0.0.60
FairWiz\hmdadr.exe	3820	70.0.0.60
FairWiz\hmdapca.exe	3067	70.0.0.60
FairWiz\hmdapch.exe	3067	70.0.0.60
FairWiz\hmdapcm.exe	3067	70.0.0.60
FairWiz\hmdapcr.exe	3067	70.0.0.60
FairWiz\hmdapcs.exe	3067	70.0.0.60

File	Size	Version
FairWiz\hmdapct.exe	3067	70.0.0.60
FairWiz\hmdapr.exe	3563	70.0.0.60
FairWiz\hmdaprc.exe	2955	
FairWiz\hmdata.exe	2316	70.0.0.60
FairWiz\Microsoft.Practices.Composite.dll	75	2.0.1.0
FairWiz\Microsoft.Practices.Composite.Presentation.dll	61	2.0.1.0
FairWiz\Microsoft.Practices.Composite.UnityExtensions.dll	15	2.0.1.0
FairWiz\Microsoft.Practices.EnterpriseLibrary.Common.dll	327	5.0.414.0
FairWiz\Microsoft.Practices.EnterpriseLibrary.Common.xml	693	
FairWiz\Microsoft.Practices.EnterpriseLibrary.ExceptionHandling.dll	143	5.0.414.0
FairWiz\Microsoft.Practices.EnterpriseLibrary.ExceptionHandling.Logging.dll	51	5.0.414.0
FairWiz\Microsoft.Practices.EnterpriseLibrary.ExceptionHandling.Logging.xml	33	
FairWiz\Microsoft.Practices.EnterpriseLibrary.ExceptionHandling.xml	214	
FairWiz\Microsoft.Practices.EnterpriseLibrary.Logging.dll	491	5.0.414.0
FairWiz\Microsoft.Practices.EnterpriseLibrary.Logging.xml	872	
FairWiz\Microsoft.Practices.ServiceLocation.dll	27	1.0.0.0
FairWiz\Microsoft.Practices.Unity.dll	131	2.0.414.0
FairWiz\Microsoft.Practices.Unity.Interception.dll	123	2.0.414.0
FairWiz\pc_list.htm	5	
FairWiz\polyGraphics.ocx	222	1.5.3.1
FairWiz\Pricing Comparison Analysis by Age - AUTO.bat	0	
FairWiz\Pricing Comparison Analysis by Age - CONS.bat	0	
FairWiz\Pricing Comparison Analysis by Age - HMZ4.bat	0	
FairWiz\Pricing Comparison Analysis by Applicant Income - AUTO.bat	0	
FairWiz\Pricing Comparison Analysis by Applicant Income - CONS.bat	0	
FairWiz\Pricing Comparison Analysis by Applicant Income - HMZ4.bat	0	
FairWiz\Pricing Comparison Analysis by Marital Status - AUTO.bat	0	
FairWiz\Pricing Comparison Analysis by Marital Status - CONS.bat	0	
FairWiz\Pricing Comparison Analysis by Marital Status - HMZ4.bat	0	
FairWiz\Pricing Comparison Analysis by Race - AUTO.bat	0	
FairWiz\Pricing Comparison Analysis by Race - CONS.bat	0	
FairWiz\Pricing Comparison Analysis by Race - HMZ4.bat	0	
FairWiz\Pricing Comparison Analysis by Sex - AUTO.bat	0	
FairWiz\Pricing Comparison Analysis by Sex - CONS.bat	0	
FairWiz\Pricing Comparison Analysis by Sex - HMZ4.bat	0	



File	Size	Version
FairWiz\Pricing Comparison Analysis by Tract Income - AUTO.bat	0	
FairWiz\Pricing Comparison Analysis by Tract Income - CONS.bat	0	
FairWiz\Pricing Comparison Analysis by Tract Income - HMZ4.bat	0	
FairWiz\ra.htm	3	
FairWiz\ra_cons.htm	2	
FairWiz\ra_smb.htm	2	
FairWiz\reg.htm	3	
FairWiz\reg_smb.htm	2	
FairWiz\ReportBuilder.app	721	
FairWiz\ReportOutput.app	232	
FairWiz\ReportPreview.app	131	
FairWiz\rskanaly.exe	1695	70.0.0.60
FairWiz\sbizdca.exe	3143	70.0.0.60
FairWiz\sbizdch.exe	3143	70.0.0.60
FairWiz\sbizdcm.exe	3143	70.0.0.60
FairWiz\sbizdcr.exe	3143	70.0.0.60
FairWiz\sbizdcs.exe	3143	70.0.0.60
FairWiz\sbizdct.exe	3143	70.0.0.60
FairWiz\sbizdm.exe	1050	70.0.0.60
FairWiz\sbizdr.exe	3787	70.0.0.60
FairWiz\Telerik.Windows.Controls.dll	2888	2011.3.1220.35
FairWiz\Telerik.Windows.Controls.Input.dll	1747	2011.3.1220.35
FairWiz\unavailable.htm	2	
FairWiz\updatecensusdb.exe	245	
FairWiz\USCENSUS.CDX	3672	
FairWiz\USCENSUS.DBF	76328	
FairWiz\usvar_regc2.DBF	108	
FairWiz\usvar_regc2.FPT	62	
FairWiz\vfpggraph.DBF	1	
FairWiz\vfpggraph.FPT	1421	
FairWiz\vgraph.DBF	0	
FairWiz\WKFS.CRAWiz.CrossProcessUtility.dll	18	70.0.60.0
FairWiz\WKFS.FLWiz.DAL.dll	25	70.0.60.0
FairWiz\WKFS.FLWiz.Infrastructure.dll	64	70.0.60.0
FairWiz\WKFS.FLWiz.ModelManager.dll	57	70.0.60.0

File	Size	Version
FairWiz\WKFS.FLWiz.Module.ComparativeFileReview.dll	231	70.0.60.0
FairWiz\WKFS.FLWiz.Module.ComparativeFileReview.dll.config	1	
FairWiz\WKFS.FLWiz.MPW.exe	931	70.0.60.0
FairWiz\WKFS.FLWiz.MPW.exe.config	3	
FairWiz\WKFS.FLWiz.Report.DAL.dll	25	70.0.60.0
FairWiz\WKFS.FLWiz.Report.exe	198	70.0.60.0
FairWiz\WKFS.FLWiz.Report.exe.config	3	
FairWiz\WKFS.FLWiz.Report.Model.dll	15	70.0.60.0
FairWiz\WKFS.Wiz.Common.DAL.dll	24	1.0.0.15
FairWiz\WKFS.Wiz.Context.dll	27	1.0.0.15
FairWiz\WKFS.Wiz.Logging.dll	11	1.0.0.15
FairWiz\WKFS.Wiz.WPFControls.dll	12	1.0.0.15
FairWiz\WPFToolkit.dll	456	3.5.50211.1
FairWiz\WPFToolkit.Extended.dll	382	1.6.0.0
FairWiz\Zdrvstat.fll	13	
FairWiz\ZIPPARAM.DBF	0	
FairWiz\ZIPPARAM.FPT	1	
FairWiz\ziptool.exe	67	70.0.0.60
FairWiz\General\AUTOFORM.CDX	22	
FairWiz\General\autoform.DBF	41	
FairWiz\General\autolist.CDX	14	
FairWiz\General\autolist.DBF	109	
FairWiz\General\A_Codes.DBF	42	
FairWiz\General\batchlist.DBF	8	
FairWiz\General\BUSDEMOG.CDX	1225	
FairWiz\General\BUSDEMOG.DBF	35421	
FairWiz\General\Codes.dbf	42	
FairWiz\General\CONSFORM.CDX	4	
FairWiz\General\consform.DBF	6	
FairWiz\General\CONSLIST.DBF	33	
FairWiz\General\C_Codes.DBF	31	
FairWiz\General\factlist.CDX	15	
FairWiz\General\factlist.DBF	47	
FairWiz\General\flwhlpfl.chm	45765	
FairWiz\General\flwhlpfl.CNT	6	

File	Size	Version
FairWiz\General\hmdaform.CDX	16	
FairWiz\General\Hmdaform.dbf	47	
FairWiz\General\lplars.CDX	3	
FairWiz\General\lplars.dbf	0	
FairWiz\General\lppsheat.dbf	2	
FairWiz\General\N_CODES.DBF	42	
FairWiz\General\Prglist.dbf	0	
FairWiz\General\ProgFact.DBF	1	
FairWiz\General\programs.CDX	4	
FairWiz\General\PROGRAMS.DBF	1	
FairWiz\General\Programs.FPT	1	
FairWiz\General\SBIZFORM.CDX	18	
FairWiz\General\sbizform.DBF	16	
FairWiz\General\SBIZLIST.DBF	53	
FairWiz\General\State.cdx	4	
FairWiz\General\State.dbf	0	
FairWiz\General\STATFILT.DBF	0	
FairWiz\General\s_codes.dbf	177	
FairWiz\General\Ud_flds.dbf	1	
FairWiz\General\ud_vars_cra.dbf	1	
FairWiz\General\Usvar.dbf	104	
FairWiz\General\Usvar.fpt	51	
FairWiz\General\usvar_regc.DBF	100	
FairWiz\General\usvar_regc.FPT	61	
FairWiz\Manual\DAMANUAL.pdf	26030	
FairWiz\Manual\Geocoder.pdf	13525	
FairWiz\Manual\MAPPER.pdf	771	
FairWiz\Media\Images\cfr_header.gif	12	
FairWiz\Media\Images\cfr_icon.gif	2	
FairWiz\Media\Images\flw_crawiz_bottombar_bg.gif	0	
FairWiz\Media\Images\flw_crawiz_bottombar_left.gif	0	
FairWiz\Media\Images\flw_crawiz_menubar_bg.gif	0	
FairWiz\Media\Images\fpr_header.gif	22	
FairWiz\Media\Images\generate_OFF.gif	0	
FairWiz\Media\Images\generate_OVER.gif	0	

File	Size	Version
FairWiz\Media\Images\go.gif	1	
FairWiz\Media\Images\go_OVER.gif	1	
FairWiz\Media\Images\header2.gif	0	
FairWiz\Media\Images\header_bg.gif	0	
FairWiz\Media\Images\ra_header.gif	10	
FairWiz\Media\Images\ra_icon.gif	2	
FairWiz\Media\Images\reg_header.gif	12	
FairWiz\Media\Images\reg_icon.gif	2	
FairWiz\Reports\ComparatorApplicantList.rdlc	68	
FairWiz\Reports\Examiner Worksheet A.rdlc	1126	
FairWiz\Reports\FLW Marketing Risk Factor M6 Report.rdlc	170	
FairWiz\Reports\FLW Risk Analysis DM Report.rdlc	156	
FairWiz\Reports\FLW Risk Analysis P4 Report.rdlc	149	
FairWiz\Reports\FLW Risk Analysis R1 Report.rdlc	131	
FairWiz\Reports\FLW Risk Analysis R2 Report.rdlc	150	
FairWiz\Reports\FLW Risk Analysis R3 Report.rdlc	114	
FairWiz\Reports\FLW Risk Analysis S3 Report.rdlc	137	
FairWiz\Reports\FLW Risk Analysis U1 or U7 Report.rdlc	151	
FairWiz\Reports\FLW Risk Analysis U2 Report.rdlc	149	
FairWiz\Reports\FLW Risk Analysis U3 Report.rdlc	113	
FairWiz\Reports\Focal Point Report.rdlc	283	
FairWiz\Reports\HMDA Underwriting and Pricing Analysis.rdlc	195	
FairWiz\Reports\K2_Detail Record Exceptions.rdlc	151	
FairWiz\Reports\K2_Geocode Exception.rdlc	71	
FairWiz\Reports\K2_Record_Level_Exceptions.rdlc	44	
FairWiz\Reports\K2_StndSummaryRpt.rdlc	142	
FairWiz\Reports\K2_Summary_Error_Report.rdlc	63	
FairWiz\Reports\Loan Application Register K2 HMZ4.rdlc	219	
FairWiz\Reports\ModelSpecificationsReport.rdlc	61	
FairWiz\Reports\PLL_CorrespondentTransactionDetails.rdlc	98	
FairWiz\Reports\PLL_CorrespondentTransactionSummary.rdlc	46	
FairWiz\Reports\PLL_Geocode Exception.rdlc	37	
FairWiz\Reports\PLL_TransactionReport.rdlc	65	
FairWiz\Reports\PLL_UserList.rdlc	28	
FairWiz\Reports\Pricing Summary.rdlc	200	

File	Size	Version
FairWiz\Reports\ProtectedApplicant.rdlc	62	
FairWiz\Reports\Standard Summary Report.rdlc	168	
FairWiz\Reports\Summary Report - Action Taken.rdlc	233	
Help\CRA Wiz Help.chm	115587	
Help\flwhlpfl.chm	45872	
Help\Wiz 6.0 Online Help.chm	4536	
HMDADes\BRSCHelp.chm	50	
HMDADes\COMMON.dll	264	1.0.5086.16473
HMDADes\Encryp.chm	45	
HMDADes\Encryption Utility.exe	150	1.0.5081.28177
HMDADes\Encryption Utility.exe.config	2	
HMDADes\GrapeCity.ActiveReports.Chart.v7.dll	2625	7.1.7572.0
HMDADes\GrapeCity.ActiveReports.Design.Win.v7.dll	9394	7.1.7572.0
HMDADes\GrapeCity.ActiveReports.Diagnostics.v7.dll	44	7.1.7572.0
HMDADes\GrapeCity.ActiveReports.Document.v7.dll	490	7.1.7572.0
HMDADes\GrapeCity.ActiveReports.Export.Image.Unsafe.v7.dll	8	7.1.7572.0
HMDADes\GrapeCity.ActiveReports.Export.Image.v7.dll	222	7.1.7572.0
HMDADes\GrapeCity.ActiveReports.Export.Pdf.v7.dll	6359	7.1.7572.0
HMDADes\GrapeCity.ActiveReports.Export.Rdf.v7.dll	62	7.1.7572.0
HMDADes\GrapeCity.ActiveReports.Export.Word.v7.dll	183	7.1.7572.0
HMDADes\GrapeCity.ActiveReports.Extensibility.v7.dll	116	7.1.7572.0
HMDADes\GrapeCity.ActiveReports.v7.dll	6008	7.1.7572.0
HMDADes\GrapeCity.ActiveReports.Viewer.Win.v7.dll	2868	7.1.7572.0
HMDADes\HMDA.exe	1364	1.1.5094.23892
HMDADes\HMDA.exe.config	3	
HMDADes\HMDADES.chm	220	
HMDADes\README.txt	1	
HMDADes\SecuritiesTable.sdf	160	
HMDADes\sqlceca35.dll	335	3.5.5692.0
HMDADes\sqlcecompact35.dll	83	3.5.5692.0
HMDADes\sqlceer35EN.dll	145	3.5.5692.0
HMDADes\sqlceme35.dll	64	3.5.5692.0
HMDADes\sqlceoledb35.dll	169	3.5.5692.0
HMDADes\sqlceqp35.dll	629	3.5.5692.0
HMDADes\sqlcese35.dll	340	3.5.5692.0

File	Size	Version
HMDADes\System.Data.SqlServerCe.dll	265	3.5.5692.0
HMDADes\Census\census14.sdf	6468	
HMDADes\Data\template.sdf	208	
HTML\ExportDefImage.jpg	2	
HTML\ExportFormatPrint.htm	1	
HTML\ExportFormatPrint.xsl	7	
HTML\ImportFormatPrint.htm	1	
HTML\ImportFormatPrint.xsl	11	
HTML\Show Export Format.xsl	2	
MapWiz\Batchind.exe	1279	
MapWiz\DPV.dll	105	24.0.0.0
MapWiz\FileMap.dll	93	24.0.0.0
MapWiz\Geocoder.exe	170	
MapWiz\Geostn32.dll	1554	27.0.0.0
MapWiz\Geostn32.lib	45	
MapWiz\Geostn32MT.dll	1561	27.0.0.0
MapWiz\Geostn32MT.lib	45	
MapWiz\geotest.exe	264	
MapWiz\gsdsplit.ini	4	
MapWiz\gsdspt32.exe	624	1.0.0.1
MapWiz\GsNetInterop.dll	136	1.0.5227.21198
MapWiz\lacs.dll	152	24.0.0.0
MapWiz\mapconfig.xml	8	
MapWiz\MapWiz.exe	78	70.0.60.0
MapWiz\MapWiz.exe.config	8	
MapWiz\MapXtremeDesktop.lic	0	
MapWiz\Microsoft.Practices.EnterpriseLibrary.Common.dll	327	5.0.414.0
MapWiz\Microsoft.Practices.EnterpriseLibrary.Data.dll	163	5.0.414.0
MapWiz\Microsoft.Practices.EnterpriseLibrary.ExceptionHandling.dll	143	5.0.414.0
MapWiz\Microsoft.Practices.EnterpriseLibrary.ExceptionHandling.Logging.dll	51	5.0.414.0
MapWiz\Microsoft.Practices.EnterpriseLibrary.Logging.dll	491	5.0.414.0
MapWiz\Microsoft.Practices.ServiceLocation.dll	27	1.0.0.0
MapWiz\Microsoft.Practices.Unity.dll	131	2.0.414.0
MapWiz\Microsoft.Practices.Unity.Interception.dll	123	2.0.414.0
MapWiz\PBBI.MapControl.dll	1976	70.0.60.0

File	Size	Version
MapWiz\PCiAMSvr.dll	94	1.0.0.64
MapWiz\PCiAMSvr.ini	1	
MapWiz\PropMetaData.xml	8	
MapWiz\STELINK.dll	80	24.0.0.0
MapWiz\WKFS.CRAWiz.Contracts.dll	21	70.0.60.0
MapWiz\WKFS.CRAWiz.CrossProcessUtility.dll	18	70.0.60.0
MapWiz\WKFS.CRAWiz.DataAccess.dll	35	70.0.60.0
MapWiz\WKFS.CRAWiz.Service.dll	16	70.0.60.0
MapWiz\WKFS.CRAWiz.ServiceProxy.dll	15	70.0.60.0
MapWiz\WKFS.CRAWiz.UI.FileDialog.dll	29	70.0.60.0
MapWiz\WKFS.CRAWiz.UI.Filter.Core.dll	70	70.0.60.0
MapWiz\WKFS.CRAWiz.UI.Filter.dll	33	70.0.60.0
MapWiz\WKFS.CRAWiz.UI.Geocoding.dll	17	70.0.60.0
MapWiz\WKFS.CRAWiz.UI.MapDialog.dll	20	70.0.60.0
MapWiz\WKFS.CRAWiz.UI.OpenDialog.dll	105	70.0.60.0
MapWiz\WKFS.CRAWiz.UI.Utility.dll	13	70.0.60.0
MapWiz\WKFS.Wiz.Common.DAL.dll	24	1.0.0.15
MapWiz\WKFS.Wiz.Context.dll	27	1.0.0.15
MapWiz\WKFS.Wiz.Logging.dll	11	1.0.0.15
MapWiz\xxf.su\$	0	
MapWiz\xxl.su\$	0	
NewDashboard\back.gif	0	
NewDashboard\back_greyout.gif	0	
NewDashboard\back_over.gif	0	
NewDashboard\back_press.gif	0	
NewDashboard\black_dot.gif	0	
NewDashboard\bottom_frame.gif	0	
NewDashboard\bullet.gif	0	
NewDashboard\Button.htc	1	
NewDashboard\button1.swf	3	
NewDashboard\cancel.gif	0	
NewDashboard\cancel_greyout.gif	0	
NewDashboard\cancel_over.gif	0	
NewDashboard\cancel_press.gif	0	
NewDashboard\checkbox_checked.gif	0	

File	Size	Version
NewDashboard\checkbox_unchecked.gif	0	
NewDashboard\ComboBox.htc	3	
NewDashboard\contract.gif	0	
NewDashboard\dummy.gif	0	
NewDashboard\Event Scheduler Import file.gif	53	
NewDashboard\event.gif	0	
NewDashboard\EventScheduler.htm	6	
NewDashboard\event_scheduler.gif	19	
NewDashboard\event_scheduler_left_header.gif	7	
NewDashboard\executing event.gif	0	
NewDashboard\expand.gif	0	
NewDashboard\failed event.gif	0	
NewDashboard\Finish.gif	0	
NewDashboard\Finish_greyout.gif	0	
NewDashboard\Finish_over.gif	0	
NewDashboard\Finish_press.gif	0	
NewDashboard\header_left.gif	11	
NewDashboard\header_middle.gif	0	
NewDashboard\header_right.gif	1	
NewDashboard\left_frame.gif	0	
NewDashboard\middle_frame.gif	0	
NewDashboard\next.gif	0	
NewDashboard\next_greyout.gif	0	
NewDashboard\next_over.gif	0	
NewDashboard\next_press.gif	0	
NewDashboard\PopupMenu.htc	4	
NewDashboard\right_frame.gif	0	
NewDashboard\Sample.htm	9	
NewDashboard\Scheduler.gif	0	
NewDashboard\select_box.gif	0	
NewDashboard\select_box_over.gif	0	
NewDashboard\select_box_press.gif	0	
NewDashboard\stripe.gif	0	
NewDashboard\successful event.gif	0	
NewDashboard\TheWizDashboard.htm	8	



File	Size	Version
NewDashboard\TheWizTaskSchedulerConstants.js	4	
NewDashboard\TheWizTaskWizard.htm	13	
NewDashboard\TheWizTaskWizardBatchReportParameters.htm	8	
NewDashboard\TheWizTaskWizardExportParameters.htm	4	
NewDashboard\TheWizTaskWizardGeocodeParameters.htm	4	
NewDashboard\TheWizTaskWizardImportParameters.htm	10	
NewDashboard\TheWizTaskWizardStep1.htm	18	
NewDashboard\TheWizTaskWizardStep2.htm	4	
NewDashboard\TheWizTaskWizardStep3.htm	3	
NewDashboard\top_frame.gif	0	
NewDashboard\TreeView.htc	12	
NewDashboard\TreeView.htm	3	
NewDashboard\TreeView_5.htc	10	
NewDashboard\TreeView_7.htc	13	
NewDashboard\UIElement.css	2	
NewDashboard\UIManager.js	12	
NewDashboard\white_arrow.gif	0	
NewDashboard\Main\leftFrame.html	3	
NewDashboard\Main\leftFrameHeader.gif	2	
NewDashboard\Main\logo.jpg	6	
NewDashboard\Main\Main.htm	1	
NewDashboard\Main\rightFrame.html	5	
NewDashboard\Main\rightFrameTemplate.html	2	
NewDashboard\Main\rightFrameweb.html	1	
NewDashboard\Main\webcenter.css	1	
NewDashboard\Main\webcenter_BG.png	0	
NewDashboard\Main\webcenter_BULLETT.png	0	
NewDashboard\Main\WebMain.htm	2	
NewDashboard\Main\welcome.css	1	
NewDashboard\Main\welcome_BG.png	0	
NewDashboard\Main\welcome_BULLETT.png	0	
NewDashboard\Main\wiz_background.gif	3	
NewDashboard\Main\wkfs_LOGO.png	9	
NewDashboard\Main\Media\fl_image.gif	4	
NewDashboard\Main\Media\welcomeBlack.jpg	8	

<b>File</b>	<b>Size</b>	<b>Version</b>
Training\Source\Branches.dat	2	
Training\Source\Branches.XLS	32	
Training\Source\Consumer Analysis File 2000.dbf	776	
Training\Source\CRA Analysis File 2000.dbf	235	
Training\Source\HMDA Analysis File 2000.dbf	1978	
Training\Source\hmda03.dat	458	
Training\Source\Hmda98.dat	116	
Training\Source\RantaBank_Mar.csv	147	
Training\Source\RantaBank_Mar.xls	514	
Training\Source\schema.ini	0	
Training\Source\SSB Branches as prn.txt	4	
Training\Source\SSB Branches.adtg	6	
Training\Source\SSB Branches.dat	16	
Training\Source\SSB Branches.dbf	5	
Training\Source\SSB February small.dbf	23	
Training\Source\SSB February.dbf	123	
Training\Source\SSB January Modified.dbf	129	
Training\Source\SSB January.dbf	136	
Training\Source\SSB Monthly.adtg	7	
Training\Source\SSB_Branches.xls	8	
Training\Source\Velo Bank 2004 HMDA Analysis.dat	275	
Training\Source\Velo Bank 2004 HMDA Final.dat	287	
Training\Source\Velo Bank CRA 2004 Final.dat	109	
Training\Source\Velo Mortgage Feb.TXT	170	
Training\Source\Velo Mortgage Jan.TXT	199	
Training\Source\Velo Mortgage Mar.TXT	176	
Training\Source\Velo Small Bus.txt	27	
WebMap\Unlicensed Web Map Image.jpg	94	



Wolters Kluwer

Financial Services

**About Wolters Kluwer Financial Services** - Wolters Kluwer Financial Services provides audit, risk and compliance solutions that help financial organizations improve efficiency and effectiveness across their enterprise. Whether complying with regulatory requirements, addressing a single key risk, or working toward a holistic risk management strategy, more than 15,000 customers worldwide count on Wolters Kluwer Financial Services for a comprehensive and dynamic view of risk management and compliance. With more than 30 offices in over 20 countries, the company's prominent brands include: FRSGlobal, ARC Logics for Financial Services, PCI, Bankers Systems, VMP® Mortgage Solutions, AppOne®, GainsKeeper®, Capital Changes, NILS, AuthenticWeb™ and Uniform Forms™. Wolters Kluwer Financial Services is part of Wolters Kluwer, a leading global information services and publishing company with annual revenues of (2011) €3.4 billion (\$4.7 billion) and approximately 19,000 employees worldwide. Please visit our website for more information.

**Wolters Kluwer Financial Services**

130 Turner Street  
Building 3, 4th Floor  
Waltham, MA 02453

800.261.3111



Wolters Kluwer

Financial Services