

CRA Wiz and Fair Lending Wiz 6.9 Update

Overview

Important!

Please read the included **Release Notes** before installing this update. The notes contain important information about the enhancements included in this update.

It is strongly recommended that you exit all Windows™ programs before running this installation.

This installation updates selected program files, but does not overwrite any user imported files or custom settings created in prior versions.

Best Practice

Wolters Kluwer Financial Services recommends that institutions back up their SQL databases prior to installing a CRA *Wiz* & Fair Lending *Wiz* program update. For detailed instructions how to back up a database refer to **Procedures for Backing Up CRA *Wiz* & Fair Lending *Wiz* Databases**, available on the CRA *Wiz* and Fair Lending *Wiz* **Web Center** at:
www.pcdownloads.com/CRAWiz/Documents/DatabaseBackupProcedures.pdf

Note:

Wolters Kluwer Financial Services currently supports your CRA *Wiz* and Fair Lending *Wiz* 6.9 software using **MS SQL Server 2008 Standard, Enterprise, and Express** editions, with the SQL Server upgrade paths supported by Microsoft. This support is valid if you are using *Wiz* 6.6 SP4 and later versions.

CRA *Wiz* and Fair Lending *Wiz* 6.9 update requires CRA *Wiz* and Fair Lending *Wiz* 6.8 or later; Microsoft Windows XP™ Service Pack 2 (SP2) or later, Microsoft Windows Server 2003™, Microsoft Windows Server 2008™, Microsoft Windows Vista™ or Microsoft Windows 7™.

Note:

In Geocoding environments with a 64-bit SQL server, the Windows logon for the SQL Service must have administrative privileges.

Note:

If your Client machine has SQL server installed, please provide the name of the local SQL server when the upgrade requests the SQL server name. The installer is requesting this information so that it can test the SQL server for CRA *Wiz* databases and then upgrade the client or workstation. If the installer finds *Wiz* Databases, the Workstation version will be

installed. If the installer does not find *Wiz* Databases it installs the Client upgrade.


Important!

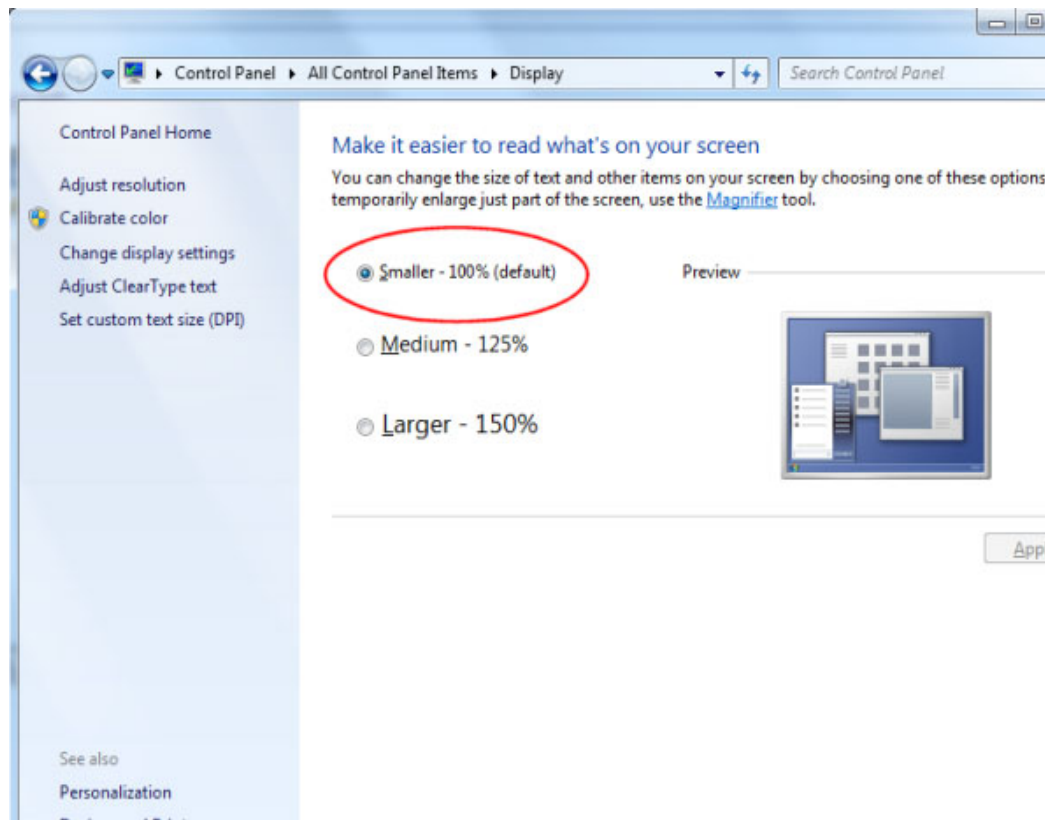
If you are running *Wiz* in a networked environment (computers with *Wiz* Client connected to a computer with *Wiz* Server), you must install the 6.9 update on **both** your *Wiz* Client and *Wiz* Server computers.

Display Settings for Mapping in Windows 7 & Vista

Use of the new Mapper requires a specific setting for the Display option when using either the Windows 7 or Windows Vista operating systems. We recommend you confirm your settings in Windows Display before using the Mapping module.

Users can follow these steps to confirm display settings:

1. Click the Windows **Start**  button.
2. Launch the **Control Panel**.
3. Click **Display**.
4. Ensure the **Smaller – 100%** option is selected:



Installation

To install CRA *Wiz* and Fair Lending *Wiz* 6.9, follow these steps:

1. Insert your **CRA Wiz and Fair Lending Wiz 6.9** DVD.
2. Select Start ► Run.
3. Type **d:\setup** in the **Run** dialog box where d: is the letter of your DVD-ROM drive.

Note:

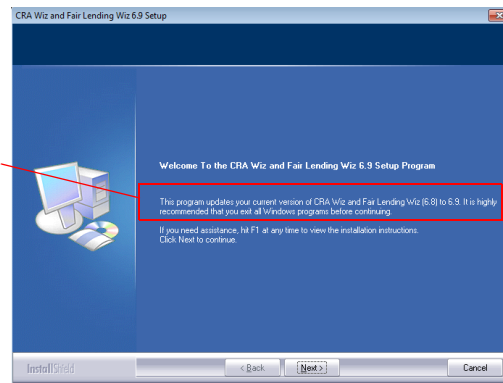
If necessary, substitute the letter designating your DVD-ROM drive.

Click the **OK** button.

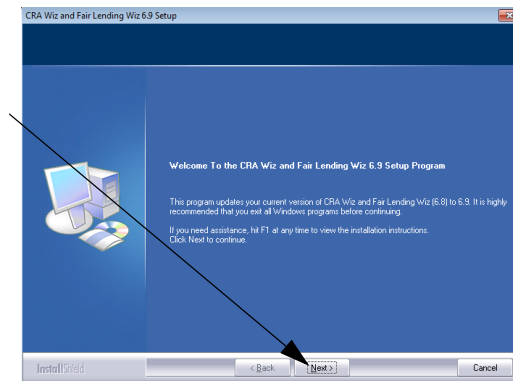
The software displays the **Welcome** screen.

Note:

The Welcome screen text indicates that you are about to update **the current version of CRA *Wiz* and Fair Lending *Wiz* (6.8 SP 1) to 6.9**. If the installer does not detect your current installation of CRA *Wiz* and Fair Lending *Wiz*, please contact **Wolters Kluwer Financial Services Technical Support** at 1-800-261-3111. When prompted, select option 1.



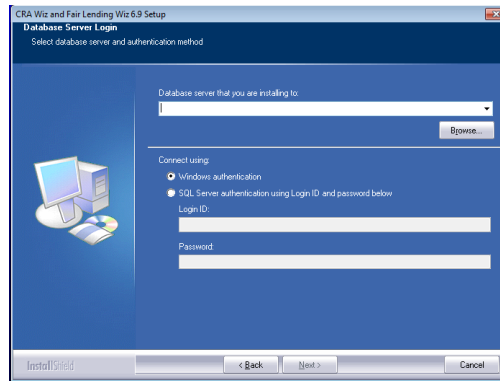
4. Click the **Next** button.



The software displays the **Database Server Login** screen.

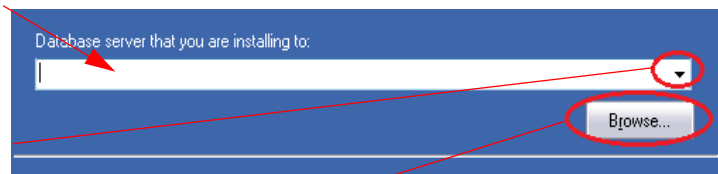
Note:

The software displays the SQL Server Login screen only if the computer on which you are installing the 6.9 update is running **SQL Server**. If the installer does not detect SQL Server on your computer, the installer displays the **Ready to Install the Program** screen. **Skip to Step 11.**



5. In the **Database server that you are installing to:** field, do one of the following:

- ✓ Enter the name of the SQL Server to which you are installing the data.
- ✓ Click the drop-down arrow located at the end of the field to select the Database server from a menu list.
- ✓ Click the Browse button then select the Database server from the resultant **Browse - Database Server** dialog box.



6. Choose one of the following authentication options:
 - ✓ Use Windows Authentication
 - ✓ Use SQL Server Authentication - If you select this option, you must also enter your SQL Server account User Name and Password in the **User Name** and **Password** fields.
7. Click the **Next** button.

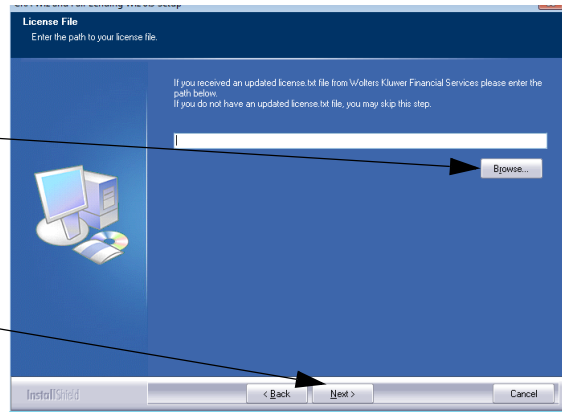
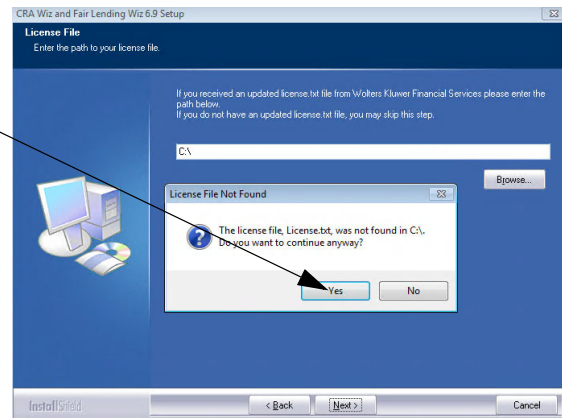
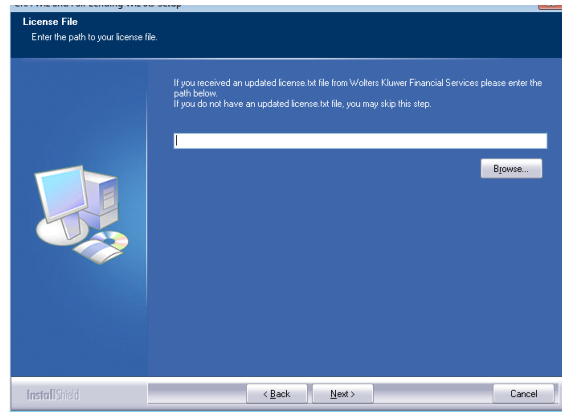
The software displays the **License File** screen.

8. Do one of the following:

✓ If you do **not** have a new license, click the **Next** button. The software displays a confirmation dialog box. Click the **Yes** button. The software displays the **Ready to Install the Program** screen. Go to **Step 10**.

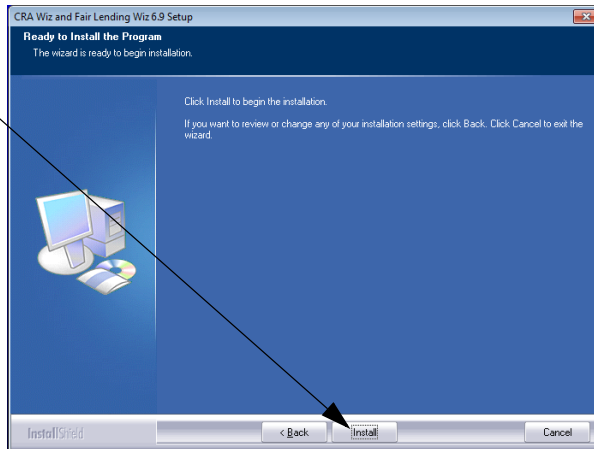
✓ If you **do** have a new license, click the **Browse** button, then use the resultant **Choose Folder** dialog box to navigate to and select your license file (either a local or network location).

9. Click the **Next** button.



The software displays the **Ready to Install the Program** screen.

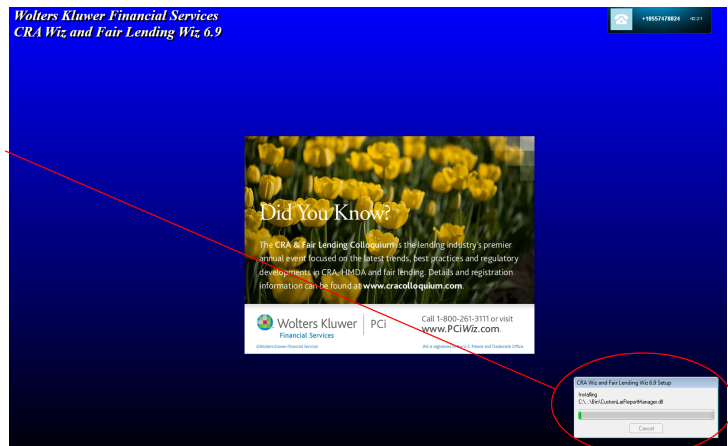
10. Click the **Install** button.



The installer runs the update.

Note:

During installation the software displays a progress bar at the lower right-hand corner of the screen.



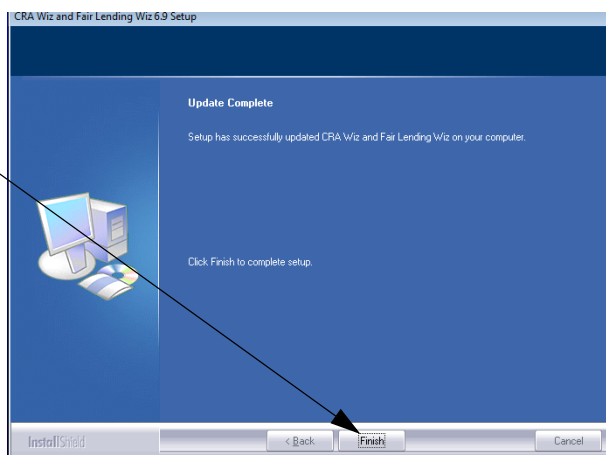
When installation is complete, the installer displays the **Update Complete** screen.

11. To exit the installation, click the **Finish** button.

Installation is complete.

Important!

Wolters Kluwer Financial Services recommends restarting your computer after installation is complete.



Appendix A: List of Modified Files

The following appendix contains a list of files that are modified by the CRA *Wiz* and Fair Lending *Wiz* 6.9 installation.

File	Size (KB)	Version
crawizconnector.dll	20	69.0.51.0
errorreport.exe	74	69.0.0.51
geobatch.exe	102	69.0.0.51
geottract.exe	82	69.0.0.51
interop.shell32.dll	52	1.0.0.0
map.ini	0	
microsoft.applicationblocks.data.dll	36	2.0.0.0
pcimaputil.exe	50	69.0.0.51
pcioutgeotool.exe	118	69.0.0.51
thewiz6.exe	18090	69.0.0.51
wkfs.wiz.autoupdater.exe	96	1.0.0.1
wkfs.wiz.autoupdater.exe.config	1	
bin\crinteface.dll	78	69.0.0.51
bin\customlarreportmanager.dll	74	69.0.0.51
bin\dbdal.dll	82	69.0.0.51
bin\geoiutil.dll	38	69.0.0.51
bin\geosetting.ocx	78	69.0.0.51
bin\listbarex.ocx	278	69.0.0.51
bin\pcicannedimport.dll	722	69.0.0.51
bin\pcicommondlg.ocx	278	69.0.0.51
bin\pcicustomreportdesigner.ocx	370	69.0.0.51
bin\pcicustomreportmanager.dll	162	69.0.0.51
bin\pcidataauditmanager.dll	54	69.0.0.51
bin\pciencryption.dll	34	69.0.0.51
bin\pciexportengine.dll	382	69.0.0.51
bin\pciexporter.ocx	46	69.0.0.51
bin\pcigeob.ocx	162	69.0.0.51

CRA Wiz and Fair Lending Wiz 6.9 Update - Installation Instructions

bin\pcigeoi.ocx	342	69.0.0.51
bin\pcigeowsconsumer.dll	66	69.0.0.51
bin\pcilartreeman.dll	138	69.0.0.51
bin\pcimap.ocx	2626	69.0.0.51
bin\pcimodifystructure.dll	58	69.0.0.51
bin\pcioutsourcer.dll	242	69.0.0.51
bin\pcisecurity.dll	154	69.0.0.51
bin\pcitabpersistence.dll	74	69.0.0.51
bin\pcitaskscheduler.dll	250	69.0.0.51
bin\pcitextprovider.dll	42	69.0.0.51
bin\pciwb.ocx	414	69.0.0.51
bin\pciwbsevice.dll	34	69.0.0.51
bin\pciwebsevice.dll	62	69.0.0.51
bin\pciwebuiframework.dll	154	69.0.0.51
bin\pciwizgeo2.dll	50	69.0.0.51
bin\pcixtab.ocx	730	69.0.0.51
bin\prjdataxferagent.dll	202	69.0.0.51
bin\rataexportimport.dll	30	69.0.0.51
bin\schedulelib.dll	262	
bin\vblibraryx.dll	102	69.0.0.51
bin\wkfs.webmap.services.dll	27	1.0.0.13
bin\wkfs.webmap.services.tlb	4	
bin\wkfs.wiz.common.dal.dll	18	1.0.0.13
bin\wkfs.wiz.webmap.client.dll	28	1.0.0.13
bin\wkfs.wiz.webmap.client.tlb	12	
cradata\reports.xml	851	
cradata\repository.mdb	452	
cradata\demog publish\demogreport_index.htm	68	
cradata\demog publish\demog_bus.htm	41	
cradata\demog publish\examinerworksheet b2_formula5.xml	3	
cradata\demogreports\busdemog.htm	37	
cradata\demogreports\projpopulation.htm	28	
cradata\reports\branchlocationreport.rdlc	119	

CRA Wiz and Fair Lending Wiz 6.9 Update - Installation Instructions

cradata\reports\index.htm	106	
cradata\reports\worksha7_formula.xml	29	
cradata\reports\workshd1_race_formula.xml	24	
cradata\reports\crystalengine\exception_summary.rpt	16	
cradata\reports\images\pciexporter.cab	19	
crades\common.dll	241	1.0.4920.14819
crades\cra.exe	1516	1.2.4944.22007
crades\crades.chm	1109	
crades\encrypt.chm	66	
crades\encryption utility.exe	150	1.0.4920.14819
crades\encryption utility.exe.config	2	
crades\readme.txt	1	
crades\census\census13.sdf	6280	
crades\data\template.sdf	320	
fairwiz\autodca.exe	3178	69.0.0.51
fairwiz\autodch.exe	3178	69.0.0.51
fairwiz\autodcm.exe	3178	69.0.0.51
fairwiz\autodcr.exe	3178	69.0.0.51
fairwiz\autodcs.exe	3178	69.0.0.51
fairwiz\autodct.exe	3178	69.0.0.51
fairwiz\autodm.exe	1054	69.0.0.51
fairwiz\autodr.exe	4506	69.0.0.51
fairwiz\autopca.exe	3128	69.0.0.51
fairwiz\autopch.exe	3128	69.0.0.51
fairwiz\autopcm.exe	3128	69.0.0.51
fairwiz\autopcr.exe	3128	69.0.0.51
fairwiz\autopcs.exe	3128	69.0.0.51
fairwiz\autopct.exe	3128	69.0.0.51
fairwiz\autopr.exe	3678	69.0.0.51
fairwiz\consdca.exe	3004	69.0.0.51
fairwiz\consdch.exe	3004	69.0.0.51
fairwiz\consdcm.exe	3004	69.0.0.51
fairwiz\consdcr.exe	3004	69.0.0.51

CRA Wiz and Fair Lending Wiz 6.9 Update - Installation Instructions

fairwiz\consdcs.exe	3004	69.0.0.51
fairwiz\consdct.exe	3004	69.0.0.51
fairwiz\consdm.exe	1050	69.0.0.51
fairwiz\consdr.exe	3685	69.0.0.51
fairwiz\conspca.exe	2951	69.0.0.51
fairwiz\conspch.exe	2951	69.0.0.51
fairwiz\conspcm.exe	2951	69.0.0.51
fairwiz\consprc.exe	2951	69.0.0.51
fairwiz\conspcs.exe	2951	69.0.0.51
fairwiz\conspct.exe	2951	69.0.0.51
fairwiz\conspr.exe	3502	69.0.0.51
fairwiz\decisioning comparison analysis by age - auto.bat	0	
fairwiz\decisioning comparison analysis by age - busi.bat	0	
fairwiz\decisioning comparison analysis by age - cons.bat	0	
fairwiz\decisioning comparison analysis by age - hmz4.bat	0	
fairwiz\decisioning comparison analysis by applicant income - auto.bat	0	
fairwiz\decisioning comparison analysis by applicant income - busi.bat	0	
fairwiz\decisioning comparison analysis by applicant income - cons.bat	0	
fairwiz\decisioning comparison analysis by applicant income - hmz4.bat	0	
fairwiz\decisioning comparison analysis by marital status - auto.bat	0	
fairwiz\decisioning comparison analysis by marital status - busi.bat	0	
fairwiz\decisioning comparison analysis by marital status - cons.bat	0	
fairwiz\decisioning comparison analysis by marital status - hmz4.bat	0	
fairwiz\decisioning comparison analysis by race - auto.bat	0	
fairwiz\decisioning comparison analysis by race - busi.bat	0	
fairwiz\decisioning comparison analysis by race - cons.bat	0	
fairwiz\decisioning comparison analysis by race - hmz4.bat	0	
fairwiz\decisioning comparison analysis by sex - auto.bat	0	
fairwiz\decisioning comparison analysis by sex - busi.bat	0	
fairwiz\decisioning comparison analysis by sex - cons.bat	0	
fairwiz\decisioning comparison analysis by sex - hmz4.bat	0	
fairwiz\decisioning comparison analysis by tract income - auto.bat	0	
fairwiz\decisioning comparison analysis by tract income - busi.bat	0	

fairwiz\decisioning comparison analysis by tract income - cons.bat	0	
fairwiz\decisioning comparison analysis by tract income - hmz4.bat	0	
fairwiz\difference of means - auto.bat	0	
fairwiz\difference of means - busi.bat	0	
fairwiz\difference of means - cons.bat	0	
fairwiz\difference of means - hmz4.bat	0	
fairwiz\focal.htm	2	
fairwiz\focalpoint.exe	743	
fairwiz\focal_new.htm	2	
fairwiz\getlardata.exe	52	
fairwiz\hmdadca.exe	3099	69.0.0.51
fairwiz\hmdadch.exe	3099	69.0.0.51
fairwiz\hmdadcm.exe	3099	69.0.0.51
fairwiz\hmdadcr.exe	3099	69.0.0.51
fairwiz\hmdadcs.exe	3099	69.0.0.51
fairwiz\hmdadct.exe	3099	69.0.0.51
fairwiz\hmdadm.exe	1407	69.0.0.51
fairwiz\hmdadr.exe	3820	69.0.0.51
fairwiz\hmdapca.exe	3067	69.0.0.51
fairwiz\hmdapch.exe	3067	69.0.0.51
fairwiz\hmdapcm.exe	3067	69.0.0.51
fairwiz\hmdapcr.exe	3067	69.0.0.51
fairwiz\hmdapcs.exe	3067	69.0.0.51
fairwiz\hmdapct.exe	3067	69.0.0.51
fairwiz\hmdapr.exe	3563	69.0.0.51
fairwiz\hmdaprc.exe	2955	
fairwiz\hmdata.exe	2316	69.0.0.51
fairwiz\microsoft.practices.composite.dll	75	2.0.1.0
fairwiz\microsoft.practices.composite.presentation.dll	61	2.0.1.0
fairwiz\microsoft.practices.composite.unityextensions.dll	15	2.0.1.0
fairwiz\microsoft.practices.enterpriselibrary.common.xml	693	
fairwiz\microsoft.practices.enterpriselibrary.exceptionhandling.dll	143	5.0.414.0
fairwiz\microsoft.practices.enterpriselibrary.exceptionhandling.logging.dll	51	5.0.414.0

CRA Wiz and Fair Lending Wiz 6.9 Update - Installation Instructions

fairwiz\microsoft.practices.enterpriselibrary.exceptionhandling.logging.xml	33	
fairwiz\microsoft.practices.enterpriselibrary.exceptionhandling.xml	214	
fairwiz\microsoft.practices.enterpriselibrary.logging.xml	872	
fairwiz\pricing comparison analysis by age - auto.bat	0	
fairwiz\pricing comparison analysis by age - cons.bat	0	
fairwiz\pricing comparison analysis by age - hmz4.bat	0	
fairwiz\pricing comparison analysis by applicant income - auto.bat	0	
fairwiz\pricing comparison analysis by applicant income - cons.bat	0	
fairwiz\pricing comparison analysis by applicant income - hmz4.bat	0	
fairwiz\pricing comparison analysis by marital status - auto.bat	0	
fairwiz\pricing comparison analysis by marital status - cons.bat	0	
fairwiz\pricing comparison analysis by marital status - hmz4.bat	0	
fairwiz\pricing comparison analysis by race - auto.bat	0	
fairwiz\pricing comparison analysis by race - cons.bat	0	
fairwiz\pricing comparison analysis by race - hmz4.bat	0	
fairwiz\pricing comparison analysis by sex - auto.bat	0	
fairwiz\pricing comparison analysis by sex - cons.bat	0	
fairwiz\pricing comparison analysis by sex - hmz4.bat	0	
fairwiz\pricing comparison analysis by tract income - auto.bat	0	
fairwiz\pricing comparison analysis by tract income - cons.bat	0	
fairwiz\pricing comparison analysis by tract income - hmz4.bat	0	
fairwiz\ra.htm	3	
fairwiz\ra_cons.htm	2	
fairwiz\ra_smb.htm	2	
fairwiz\reg.htm	3	
fairwiz\reg_smb.htm	2	
fairwiz\rskanaly.exe	1695	69.0.0.51
fairwiz\sbizdca.exe	3143	69.0.0.51
fairwiz\sbizdch.exe	3143	69.0.0.51
fairwiz\sbizdcm.exe	3143	69.0.0.51
fairwiz\sbizdcr.exe	3143	69.0.0.51
fairwiz\sbizdcs.exe	3143	69.0.0.51
fairwiz\sbizdct.exe	3143	69.0.0.51

fairwiz\sbizdm.exe	1050	69.0.0.51
fairwiz\sbizdr.exe	3787	69.0.0.51
fairwiz\updatecensusdb.exe	245	
fairwiz\wkfs.crawiz.crossprocessutility.dll	18	69.0.51.0
fairwiz\wkfs.flwiz.dal.dll	24	69.0.51.0
fairwiz\wkfs.flwiz.infrastructure.dll	62	69.0.51.0
fairwiz\wkfs.flwiz.modelmanager.dll	51	69.0.51.0
fairwiz\wkfs.flwiz.module.comparativefilereview.dll	216	69.0.51.0
fairwiz\wkfs.flwiz.module.comparativefilereview.dll.config	1	
fairwiz\wkfs.flwiz.mpw.exe	930	69.0.51.0
fairwiz\wkfs.flwiz.mpw.exe.config	3	
fairwiz\wkfs.flwiz.report.dal.dll	19	69.0.51.0
fairwiz\wkfs.flwiz.report.exe	158	69.0.51.0
fairwiz\wkfs.flwiz.report.exe.config	3	
fairwiz\wkfs.flwiz.report.model.dll	15	69.0.51.0
fairwiz\wkfs.wiz.common.dal.dll	24	1.0.0.13
fairwiz\wkfs.wiz.context.dll	26	1.0.0.13
fairwiz\wkfs.wiz.logging.dll	11	1.0.0.13
fairwiz\wkfs.wiz.wpfcontrols.dll	12	1.0.0.13
fairwiz\wpftoolkit.dll	456	3.5.50211.1
fairwiz\wpftoolkit.extended.dll	382	1.6.0.0
fairwiz\ziptool.exe	67	69.0.0.51
fairwiz\general\flwhlpfl.chm	39864	
fairwiz\reports\comparatorapplicantlist.rdlc	68	
fairwiz\reports\flw risk analysis dm report.rdlc	156	
fairwiz\reports\flw risk analysis p4 report.rdlc	148	
fairwiz\reports\flw risk analysis r1 report.rdlc	131	
fairwiz\reports\flw risk analysis r2 report.rdlc	150	
fairwiz\reports\flw risk analysis r3 report.rdlc	113	
fairwiz\reports\flw risk analysis s3 report.rdlc	137	
fairwiz\reports\flw risk analysis u1 or u7 report.rdlc	150	
fairwiz\reports\flw risk analysis u2 report.rdlc	148	
fairwiz\reports\flw risk analysis u3 report.rdlc	113	

CRA Wiz and Fair Lending Wiz 6.9 Update - Installation Instructions

fairwiz\reports\focal point report.rdlc	283	
fairwiz\reports\hmda underwriting and pricing analysis.rdlc	194	
fairwiz\reports\pricing summary.rdlc	200	
fairwiz\reports\protectedapplicant.rdlc	62	
fairwiz\reports\standard summary report.rdlc	168	
fairwiz\reports\summary report - action taken.rdlc	233	
help\cra wiz help.chm	105486	
help\flwhlpfl.chm	39864	
hmdades\common.dll	241	1.0.4920.14819
hmdades\encryp.chm	45	
hmdades\encryption utility.exe	150	1.0.4920.14819
hmdades\encryption utility.exe.config	2	
hmdades\hmda.exe	1369	1.2.4944.22007
hmdades\hmdades.chm	266	
hmdades\readme.txt	1	
hmdades\securitiestable.sdf	160	
hmdades\census\census13.sdf	6468	
hmdades\data\template.sdf	208	
mapwiz\batchind.exe	1234	
mapwiz\dpv.dll	105	24.0.0.0
mapwiz\filemap.dll	93	24.0.0.0
mapwiz\geocoder.exe	170	
mapwiz\geostn32.dll	1466	26.0.0.0
mapwiz\geostn32.lib	45	
mapwiz\geostn32mt.dll	1474	26.0.0.0
mapwiz\geostn32mt.lib	45	
mapwiz\geotest.exe	263	
mapwiz\gsdspt32.exe	627	1.0.0.1
mapwiz\lacs.dll	152	24.0.0.0
mapwiz\mapconfig.xml	8	
mapwiz\mapwiz.exe	77	69.0.51.0
mapwiz\mapwiz.exe.config	8	
mapwiz\microsoft.practices.enterpriselibrary.exceptionhandling.logging.xml	33	

mapwiz\pbbi.mapcontrol.dll	1966	69.0.51.0
mapwiz\pciamsvr.dll	98	1.0.0.53
mapwiz\pciamsvr.ini	1	
mapwiz\stelink.dll	79	24.0.0.0
mapwiz\wkfs.crawiz.contracts.dll	21	69.0.51.0
mapwiz\wkfs.crawiz.crossprocessutility.dll	18	69.0.51.0
mapwiz\wkfs.crawiz.dataaccess.dll	35	69.0.51.0
mapwiz\wkfs.crawiz.service.dll	16	69.0.51.0
mapwiz\wkfs.crawiz.serviceproxy.dll	15	69.0.51.0
mapwiz\wkfs.crawiz.ui.filedialog.dll	29	69.0.51.0
mapwiz\wkfs.crawiz.ui.filter.core.dll	70	69.0.51.0
mapwiz\wkfs.crawiz.ui.filter.dll	33	69.0.51.0
mapwiz\wkfs.crawiz.ui.geocoding.dll	16	69.0.51.0
mapwiz\wkfs.crawiz.ui.mapdialog.dll	20	69.0.51.0
mapwiz\wkfs.crawiz.ui.opendialog.dll	104	69.0.51.0
mapwiz\wkfs.crawiz.ui.utility.dll	13	69.0.51.0
mapwiz\wkfs.wiz.common.dal.dll	24	1.0.0.13
mapwiz\wkfs.wiz.context.dll	26	1.0.0.13
mapwiz\wkfs.wiz.logging.dll	11	1.0.0.13
newdashboard\main\rightframetemplate.html	6	

