

Release Notes and Installation
Instructions

December 2021

Front End Build: **75.5.2**
Back End Build: **75.5.7**

Governance, Risk & Compliance

CRA *Wiz* and Fair Lending *Wiz*: FFIEC Encryption Utility Hotfix

Content

1	Overview	3
1.1	Who Should Install	3
1.2	Where to Install	3
1.3	Prerequisites	3
1.4	Required Permissions	3
1.5	Required Free Disk Space	3
1.6	Approximate Install Time	3
1.7	Confirming Installation	3
2	Installation	5
3	Appendix A: Technical Reference	11

1 Overview

Front End Build: **75.5.2**

Back End Build: **75.5.7**

Important!

Please read the following **Release Notes** before installing this update. The notes contain important information about the enhancements included in this update:

The **CRA Wiz and Fair Lending Wiz FFIEC Encryption Utility Hotfix** release updates the **CRA Submission Encryption Utility** with the version released by the FFIEC in December 2021.

Important!

This hotfix should be applied **after** the **2021 Submission Update (75.5.2)**.

1.1 Who Should Install

Clients who are using *CRA Wiz* and *Fair Lending Wiz* for **CRA Submission** should apply this Hotfix.

1.2 Where to Install

For **Workstation** and **Client/Server** environments, this Hotfix should be installed on the *CRA Wiz* and *Fair Lending Wiz* **client only**.

1.3 Prerequisites

To apply this Hotfix to *CRA Wiz* and *Fair Lending Wiz*, you should have already installed the **2021 Submission Update** (Build 75.5.2) installed.

1.4 Required Permissions

This installation requires writing and modification, SQL server access, and registry modifications. Wolters Kluwer recommends that the user running the install have both Windows admin and SQL Server admin login credentials.

1.5 Required Free Disk Space

Client – 2GB (gigabytes)

Workstation – 17.5GB (gigabytes)

1.6 Approximate Install Time

Client – Five (5) minutes

Workstation – 15 minutes

1.7 Confirming Installation

To confirm installation of the Hotfix, navigate to:

C:\Program Files (x86)\Wolters Kluwer Financial Services\CRA Wiz and Fair Lending Wiz\CRADes\Encryption Utility.exe

And confirm that the **Encryption Utility.exe** file indicates the following:

- Date modified: **8/2/2021**
- Version Number: **1.0.7884.16230**

2 Installation

To install the CRA *Wiz* and Fair Lending *Wiz* FFIEC Encryption Utility Hotfix, follow these steps:

1. Back up your SQL databases.

Wolters Kluwer recommends that institutions back up their SQL databases prior to installing a CRA *Wiz* & Fair Lending *Wiz* program update. Databases that should be backed up include:

- ObjectStore
- General
- USCensus
- CRB
- Procedure
- All Wiz_# databases

For detailed instructions how to back up a database refer to **Procedures for Backing Up CRA *Wiz* & Fair Lending *Wiz* Databases**, available on the CRA *Wiz* and Fair Lending *Wiz* **Web Center** via the following link:

[DATABASE BACK UP PROCEDURES](#)

Or consult your Database Administrator.

Important!

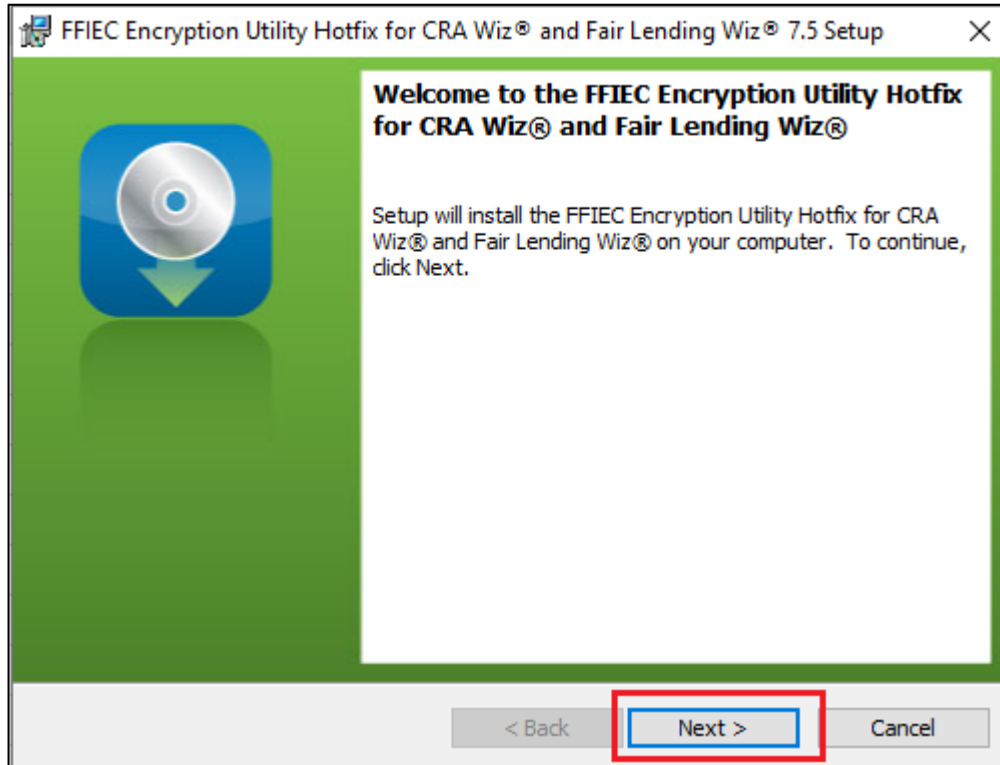
It is strongly recommended that you exit all Windows™ programs before running this installation. This installation updates selected program files but does not overwrite any user imported files or custom settings created in prior versions.

2. Download the update locally where CRA *Wiz* and Fair Lending *Wiz* is installed.
3. Right-click the **CRAWiz75CRADESHotfix.exe** file.

The software displays a contextual menu.

4. Select **Run as Administrator**.

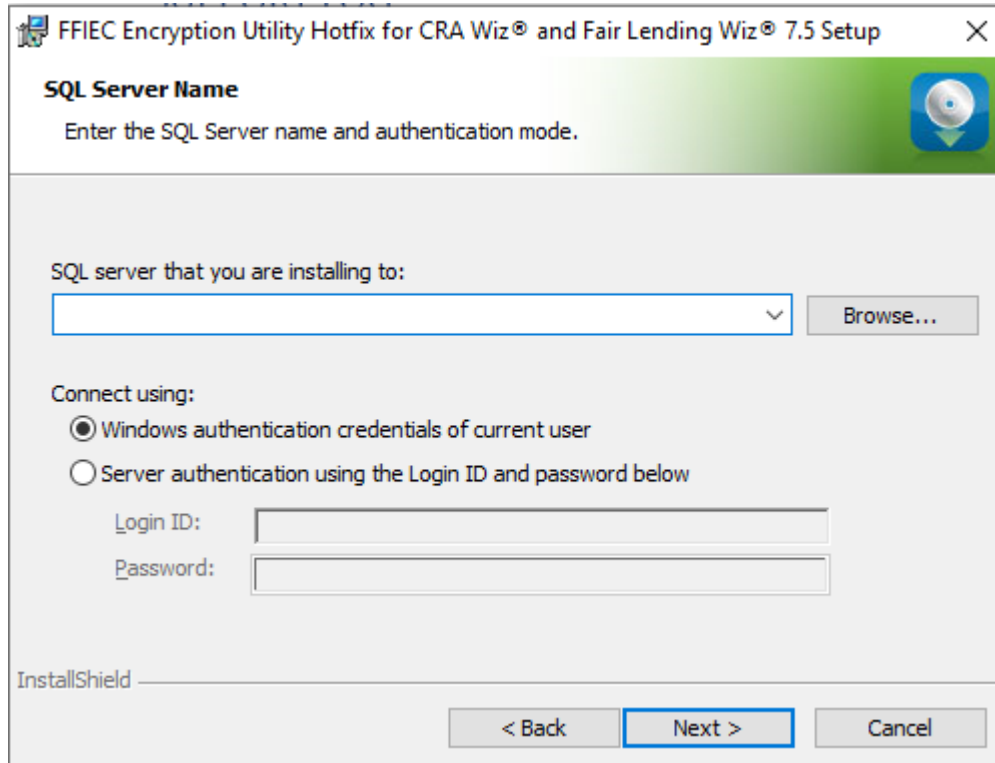
The installer displays the **Welcome** screen:



Note:

The Welcome screen text indicates that you are about to update the current version of CRA *Wiz* and Fair Lending *Wiz*. If the installer does not detect your current installation of CRA *Wiz* and Fair Lending *Wiz*, please contact **Wolters Kluwer Technical Support at 1-800-261-3111**. When prompted, select **option 1**.

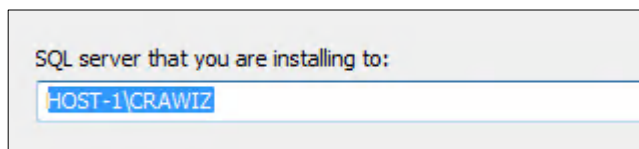
5. Click the **Next** button. The software displays the **SQL Server Name** screen:



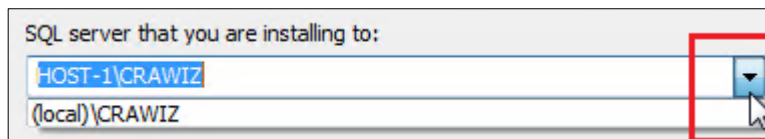
Note:

The software displays the SQL Server Login screen only if the computer on which you are installing the update is running **SQL Server**. If the installer does not detect SQL Server on your computer, the installer displays the **Ready to Install the Program** screen. **Skip to Step 9.**

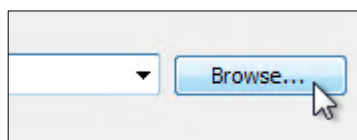
6. In the **SQL server that you are installing to:** field, do one of the following:
 - Enter the name of the SQL Server to which you are installing the data:



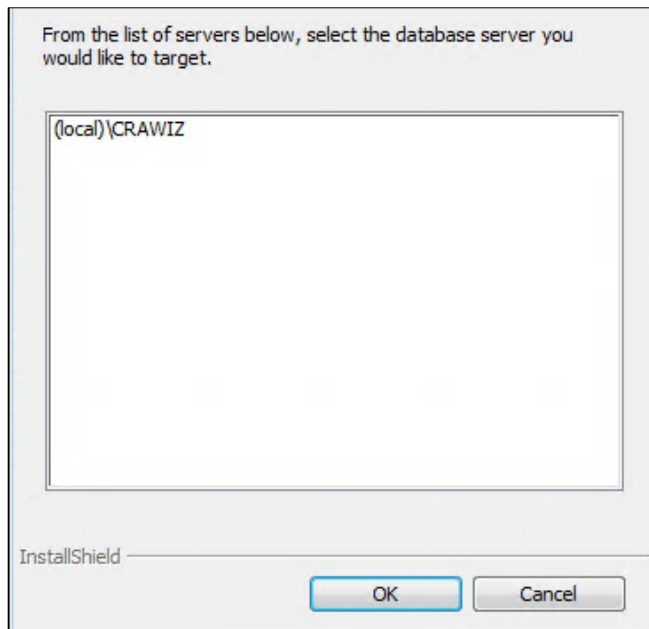
- Click the drop-down arrow located at the end of the field to select the Database server from a menu list:



- Click the **Browse** button:



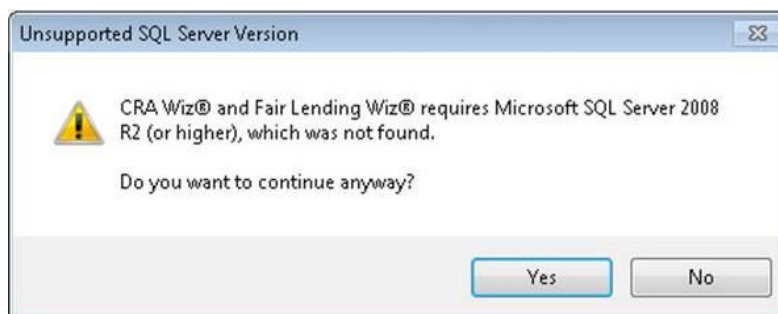
Then select the database server from the resultant dialog box:



7. Choose one of the following authentication options:
 - **Use Windows Authentication**
 - **Use SQL Server Authentication** - If you select this option, you must also enter your SQL Server account User Name and Password in the **User Name** and **Password** fields.
8. Click the **Next** button.

Important:

If your SQL Server installation does not meet requirements for installing CRA *Wiz* and Fair Lending *Wiz*, the software displays the following message:

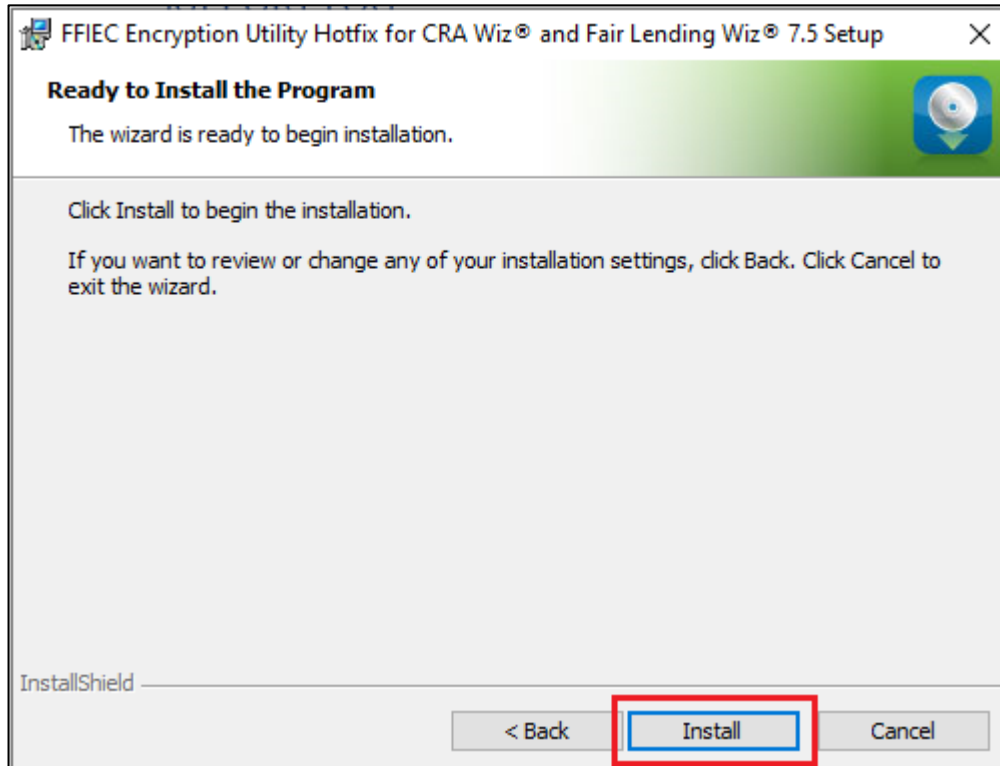


If the software displays this message, contact **Wolters Kluwer Technical Support** at **1-800-261-3111** for assistance.

Do one of the following:

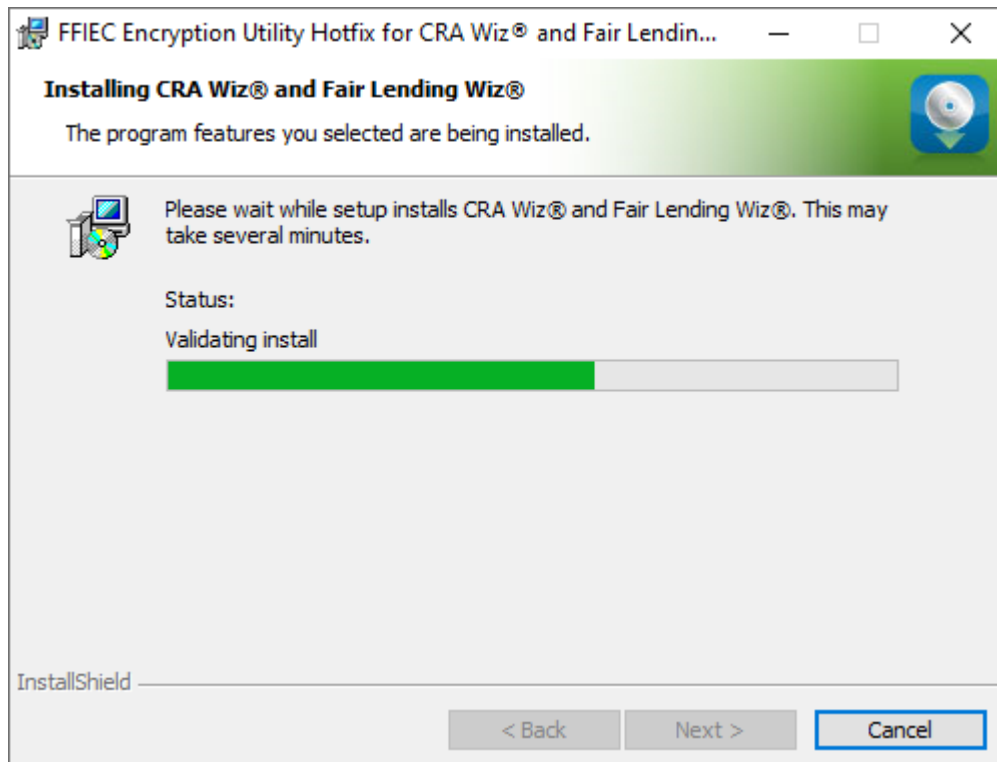
- Click the **Yes** button to **proceed** with installation.
 - Click the **No** button to **cancel** the installation.
9. Click the **Next** button.

The software displays the **Ready to Install the Program** screen:



10. Click the **Install** button.

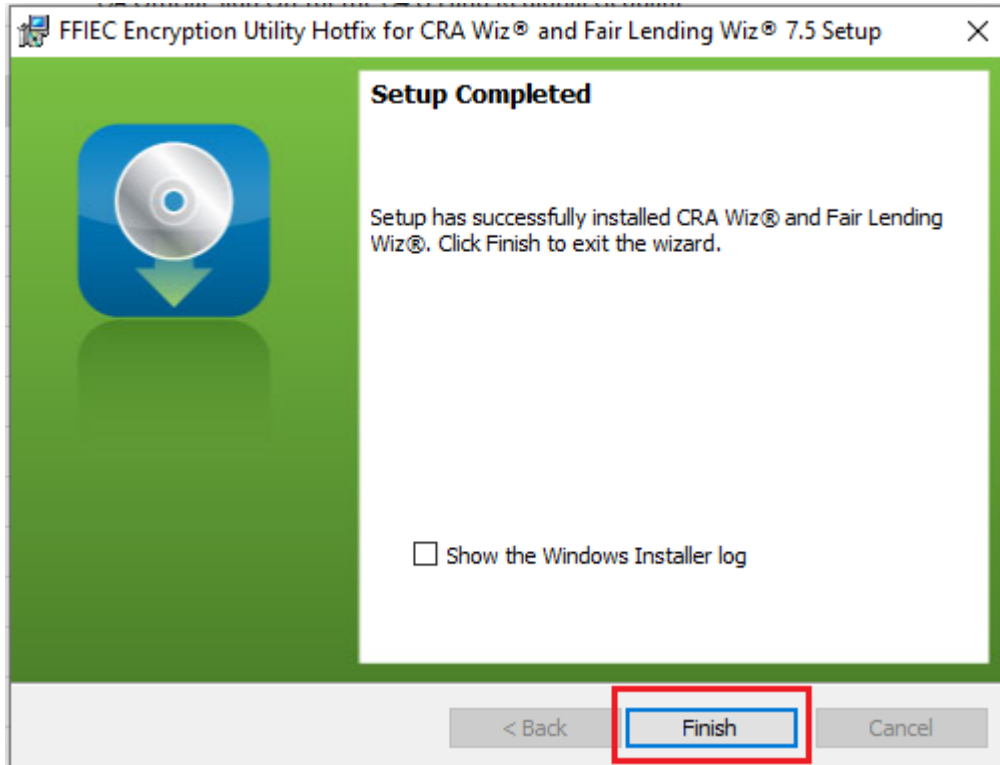
The installer runs the update:



Note:

During installation the software displays a progress bar in the installer window.

When installation is complete, the installer displays the **Update Complete** screen:



11. To exit the installation, click the **Finish** button.

Installation is complete.

Important!

Wolters Kluwer recommends restarting your computer after installation is complete.

3 Appendix A: Technical Reference

- ✓ Wolters Kluwer currently supports your CRA *Wiz* and Fair Lending *Wiz* software using Microsoft SQL Server 2012™, 2014™, 2016™, 2017™, and 2019™ (Standard, Enterprise, and Express editions), with the SQL Server upgrade patches supported by Microsoft.
- ✓ CRA *Wiz* and Fair Lending *Wiz* 7.5 Hotfix update requires CRA *Wiz* and Fair Lending *Wiz* 7.5 (Build 75.0.103); Microsoft Windows Server 2012™, Microsoft Windows Server 2016™, Microsoft Windows 8™, or Microsoft Windows 10™.

About Wolters Kluwer: Wolters Kluwer provides audit, risk and compliance solutions that help financial organizations improve efficiency and effectiveness across their enterprise. Whether complying with regulatory requirements, addressing a single key risk, or working toward a holistic risk management strategy, more than 15,000 customers worldwide count on Wolters Kluwer for a comprehensive and dynamic view of risk management and compliance. With more than 30 offices in over 20 countries, the company's prominent brands include: FRSGlobal, ARC Logics for Financial Services, PCi, Bankers Systems, VMP® Mortgage Solutions, AppOne®, GainsKeeper®, Capital Changes, NILS, AuthenticWeb™ and Uniform Forms™. Wolters Kluwer is a leading global information services and publishing company with annual revenues of (2011) €3.4 billion (\$4.7 billion) and approximately 19,000 employees worldwide. Please visit our website for more information.

Confidentiality Notice: This document contains privileged information that is intended for the addressee only. If you are not an intended recipient of the original sender (or responsible for delivering the message to such person), you are hereby notified that any review, disclosure, copying, distribution or the taking of any action in reliance of the contents of and links to attachments in the document is strictly prohibited. If you have received this in error, please immediately notify the sender and permanently delete any copies of this document (digital or paper) in your possession.

Wolters Kluwer

230 3rd Ave.
Waltham, MA
02453
800.261.3111