

Installation Instructions and  
Release Notes

March 2021

Governance, Risk & Compliance

# CRA *Wiz* and Fair Lending *Wiz*: 2020 Projected Demographics

# Content

<b>1</b>	<b>Overview</b>	<b>3</b>
1.1	Data Source	3
1.2	Who should install	3
1.3	Where to install	3
1.4	Prerequisites	3
1.5	Required Permissions	3
1.6	Required free space	3
1.7	Approximate install time	3
1.8	Confirming installation	3
<b>2</b>	<b>Installation Instructions</b>	<b>4</b>
2.1	Welcome Screen	4
2.2	Database Server Login Screen	5
2.3	Ready to Install Screen	6
2.4	Setup Status Screen	7
2.5	Setup Complete Screen	8

# 1 Overview

This update provides the latest **Projected Demographic Data** for use in performance context analysis.

## 1.1 Data Source

American Community Survey five-year estimates.

## 1.2 Who should install

Any client licensed for Projected Geo-Demographic Data should install this update. To determine if you are licensed for this data, go to the **System Maintenance** screen and select **License and Access Management**.

## 1.3 Where to install

This dataset should be installed on the SQL Server where CRA *Wiz* and Fair Lending *Wiz* is hosted. No client installation is required.

## 1.4 Prerequisites

**CRA *Wiz* and Fair Lending *Wiz* 7.4 or higher is required to install this update.** To check your CRA *Wiz* and Fair Lending *Wiz* version, go to the program menu bar and select **Help > About CRA *Wiz***. Build numbers starting with "74" are acceptable.

## 1.5 Required Permissions

This update is installed as a single table on your SQL server, so both Windows read/write permissions and SQL Server table creation permissions are required. Wolters Kluwer recommends that the user running the install have both Windows admin and SQL Server admin login credentials.

## 1.6 Required free space

500 megabytes (MB)

## 1.7 Approximate install time

One (1) minute

## 1.8 Confirming installation

Use the following SQL script to confirm that the data has been successfully installed.

```
SELECT COUNT (*)  
FROM [USCensus] . [dbo] . [PROJECTEDEMOG20]
```

If the count returned is greater than zero, the data has been installed. The actual count value will vary based on your licensed region(s).

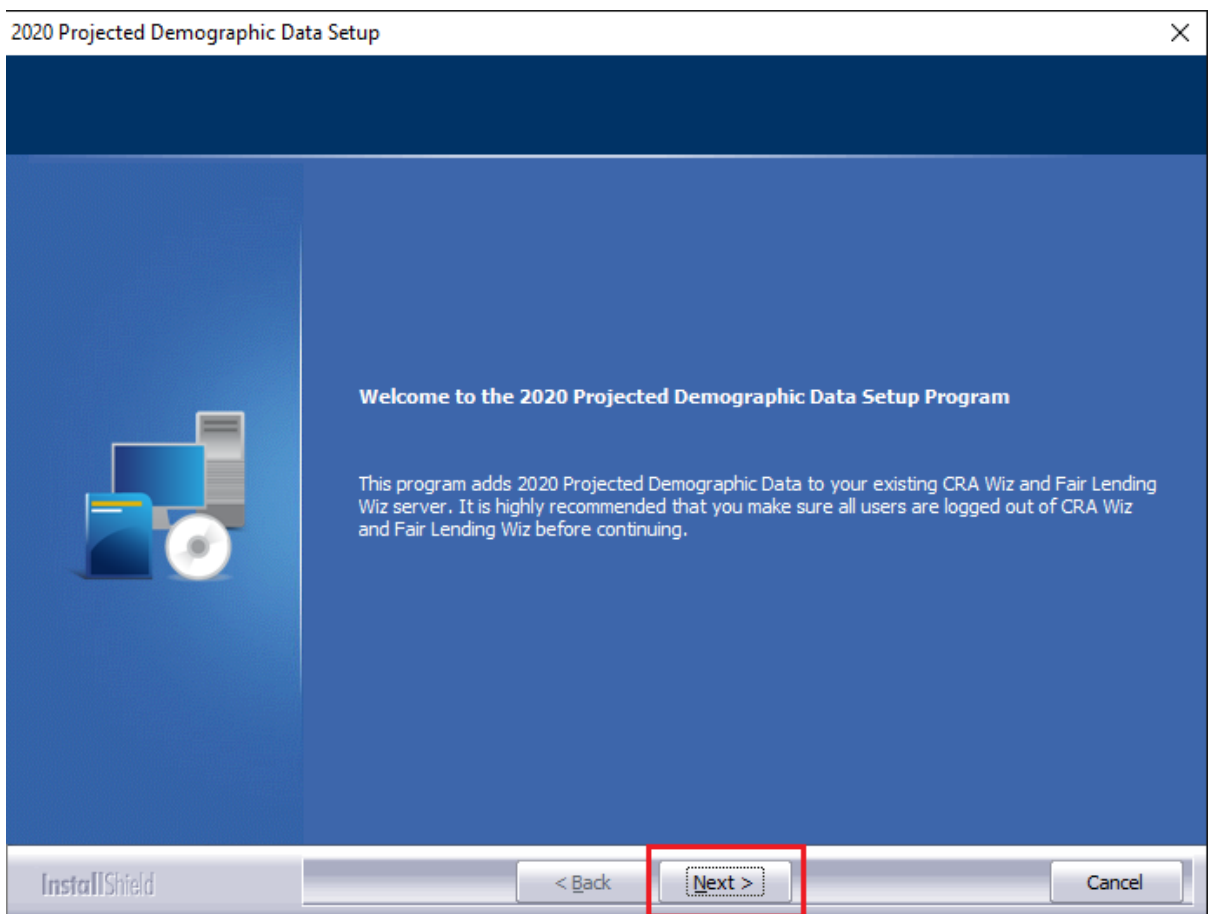
## 2 Installation Instructions

To install **2020 Projected Demographic** data, follow these steps:

1. After downloading the update locally on the SQL Server, locate and double-click the **2020ProjectedDemographicData** installation file.  
The installer displays the **Welcome** screen.
2. Follow the directions for each of the following screens.

### 2.1 Welcome Screen

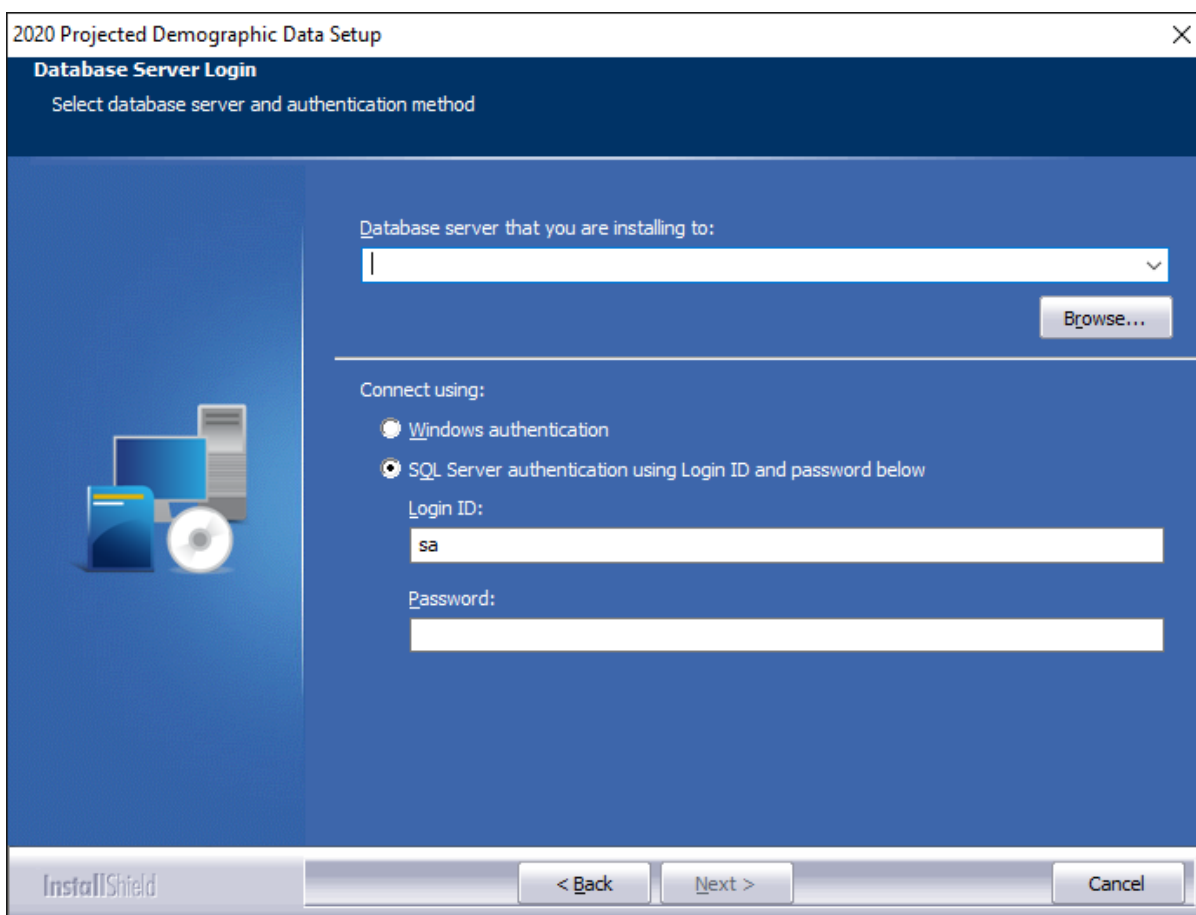
Click the **Next** button:



The software displays the **Database Server Login** screen.

## 2.2 Database Server Login Screen

You use the **Database Server Login** screen to specify the SQL Server to which you are installing to, and also SQL Server login information:



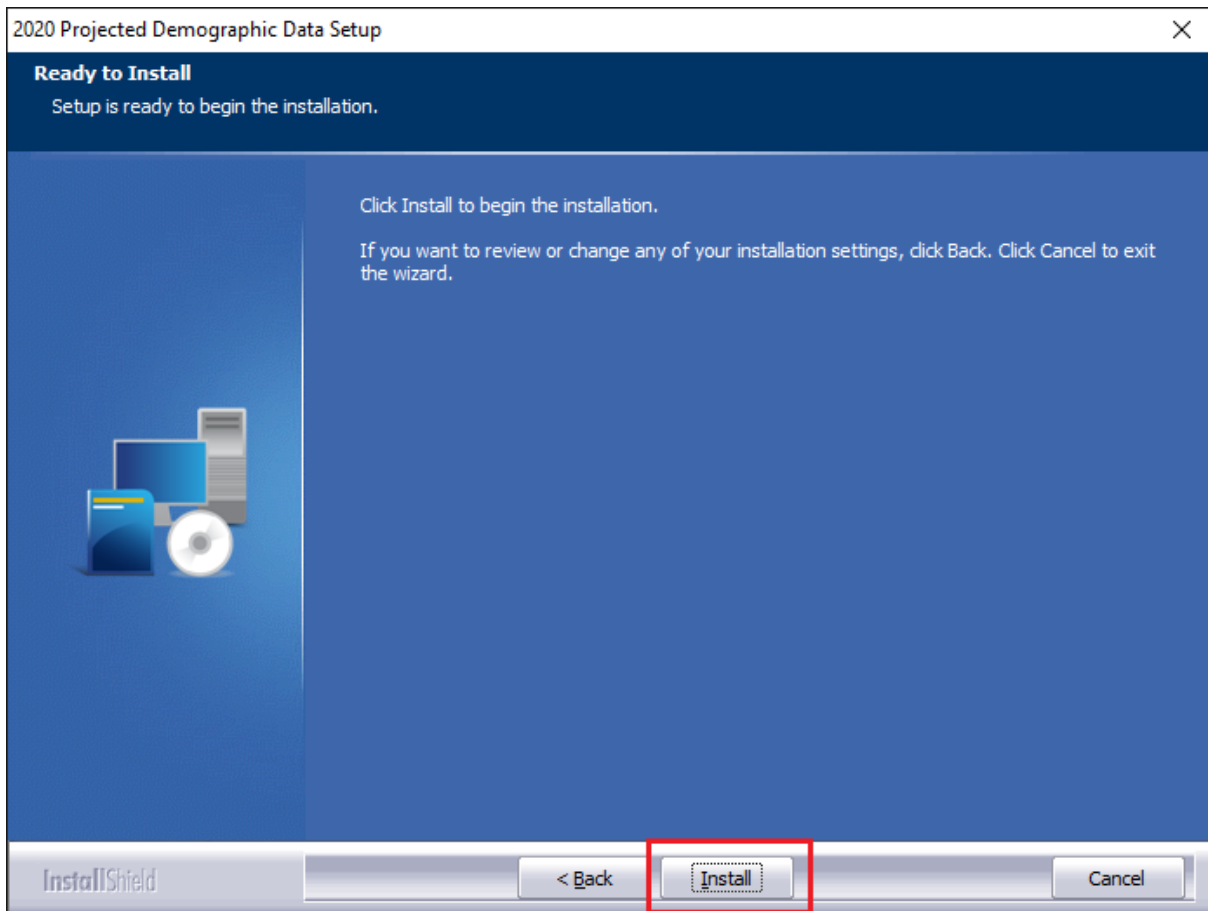
To configure SQL Server options, follow these steps:

1. Do one of the following:
  - In the **Database server that you are installing to** field, enter the **SQL Server name and instance** to which you are installing the data.  
  
**Example:** SVRBOS01\SQLEXPRESS
  - Click the **Browse** button and in the resultant dialog box, select the SQL Server.
2. Choose one of the following authentication options:
  - Use Windows Authentication
  - Use SQL Server Authentication - If you select this option, you must also enter your SQL Server account **User Name** and **Password** in the **User Name** and **Password** fields.
3. Click the **Next** button.

The software displays the **Ready to Install** screen.

### 2.3 Ready to Install Screen

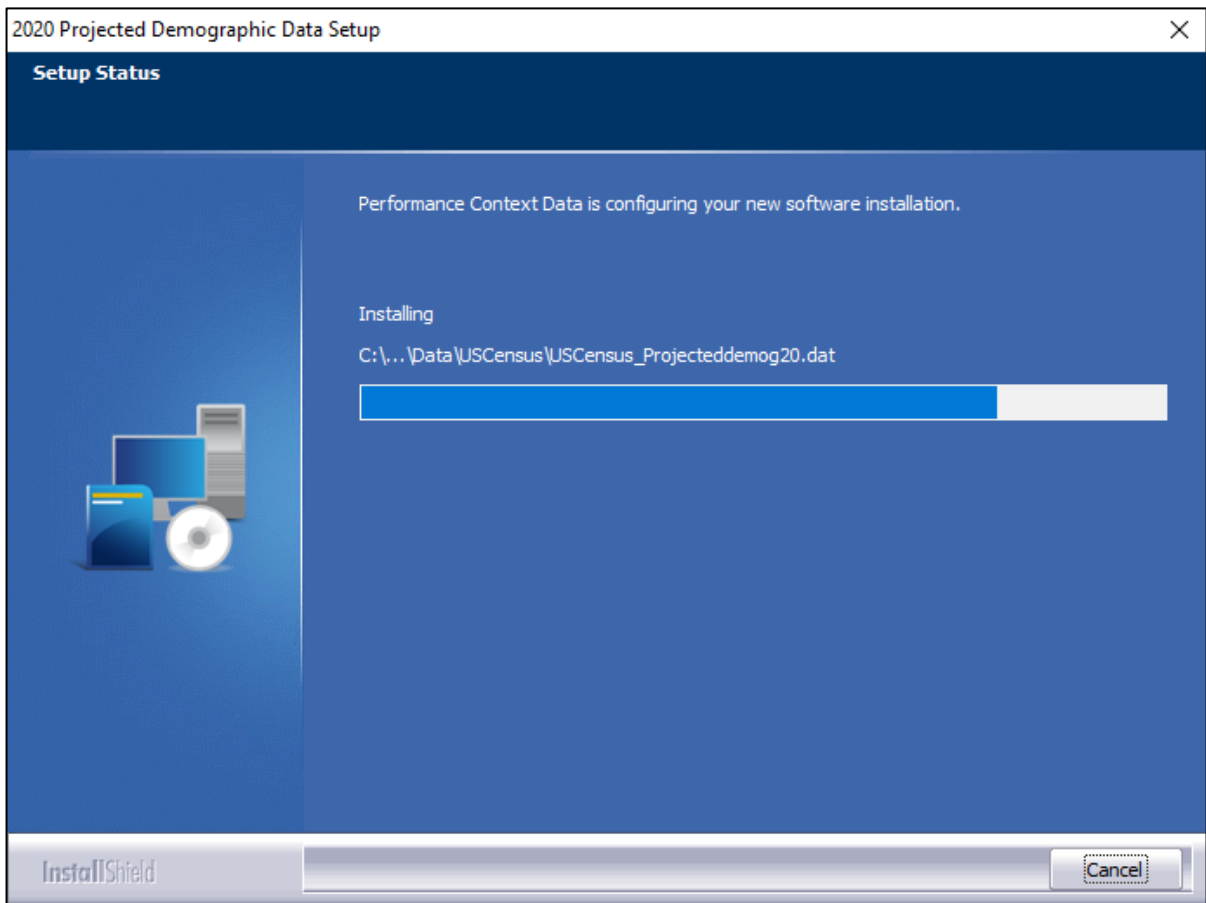
To begin installing the data, click the **Install** button:



The installer displays the **Setup Status** screen.

## 2.4 Setup Status Screen

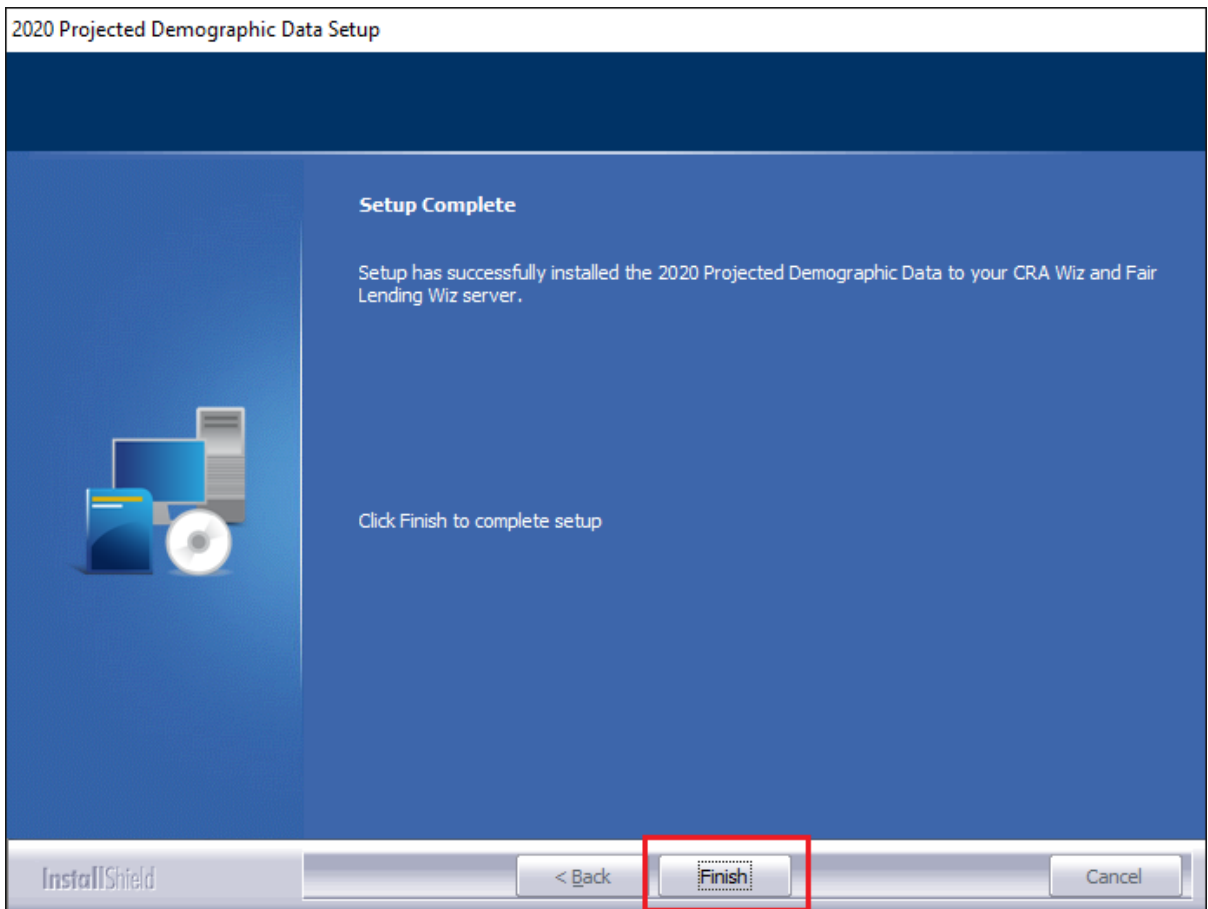
The **Setup Status** screen displays a progress bar that reports the progress of the installation:



When installation is complete, the installer displays the **Setup Complete** screen.

## 2.5 Setup Complete Screen

Click the **Finish** button:



Installation is complete.



---

**About Wolters Kluwer:** Wolters Kluwer provides audit, risk and compliance solutions that help financial organizations improve efficiency and effectiveness across their enterprise. Whether complying with regulatory requirements, addressing a single key risk, or working toward a holistic risk management strategy, more than 15,000 customers worldwide count on Wolters Kluwer for a comprehensive and dynamic view of risk management and compliance. With more than 30 offices in over 20 countries, the company's prominent brands include: FRSGlobal, ARC Logics for Financial Services, PCI, Bankers Systems, VMP® Mortgage Solutions, AppOne®, GainsKeeper®, Capital Changes, NILS, AuthenticWeb™ and Uniform Forms™. Wolters Kluwer is a leading global information services and publishing company with annual revenues of (2011) €3.4 billion (\$4.7 billion) and approximately 19,000 employees worldwide. Please visit our website for more information.

**Confidentiality Notice:** This document contains privileged information that is intended for the addressee only. If you are not an intended recipient of the original sender (or responsible for delivering the message to such person), you are hereby notified that any review, disclosure, copying, distribution or the taking of any action in reliance of the contents of and links to attachments in the document is strictly prohibited. If you have received this in error, please immediately notify the sender and permanently delete any copies of this document (digital or paper) in your possession.

Wolters Kluwer  
230 3rd Ave.  
Waltham, MA  
02453

800.261.3111