



Consumer Compliance Solutions

CRA *Wiz* and Fair Lending *Wiz* 7.0: 2014 Peer Small Business Data

Release Notes and Installation Instructions

Release Date: September 11, 2015

Table of Contents

Overview	3
Data source	3
Who should install	3
Prerequisites	3
Required permissions.....	3
Required free space	3
Approximate install time.....	3
Confirming installation.....	3
Installation Instructions	4
Welcome Screen	4
Database Server Login Screen.....	5
Ready to Install Screen.....	6
Setup Status Screen	7
Setup Complete Screen.....	8

Overview

On August 25, 2015, the FFIEC released the complete set of 2014 Peer Small Business data. This update allows users to incorporate this data into their CRA *Wiz* reporting and analysis.

Data source

FFIEC

Who should install

Any client licensed for Peer Small Business Data should install this update. To determine if you are licensed for Peer Small Business Data, go to the **System Maintenance** screen and select **License and Access Management**.

Prerequisites

CRA *Wiz* and Fair Lending *Wiz* 6.9 or 7.0 is required to install this update. To check your CRA *Wiz* and Fair Lending *Wiz* version, go to the program menu bar and select **Help > About CRA *Wiz***. Build numbers starting with "69" or "70" are acceptable.

Required permissions

This update is installed as a single database, so both Windows read/write permissions and SQL Server database creation permissions are required. Wolters Kluwer Financial Services recommends that the user running the install have both a Windows admin and SQL Server admin login credentials.

Required free space

400MB

Approximate install time

10 minutes

Confirming installation

Once the installation is complete, you can verify the installation by selecting the **File Management** option in the CRA *Wiz* and Fair Lending *Wiz* sidebar. You will also need to set Census boundaries to 2010, located in the **Options** menu bar item. The software will then display a file named **2014 Peer Small Business Data** in the **Peer Small Business Data** folder of the **File Management** screen.

Note: The CRA *Wiz* and Fair Lending *Wiz* build number (as found in Help > About CRA *Wiz*) is not updated by the 2014 Peer Small Business Data installer.

Installation Instructions

To install **2014 Peer Small Business Data**, follow these steps:

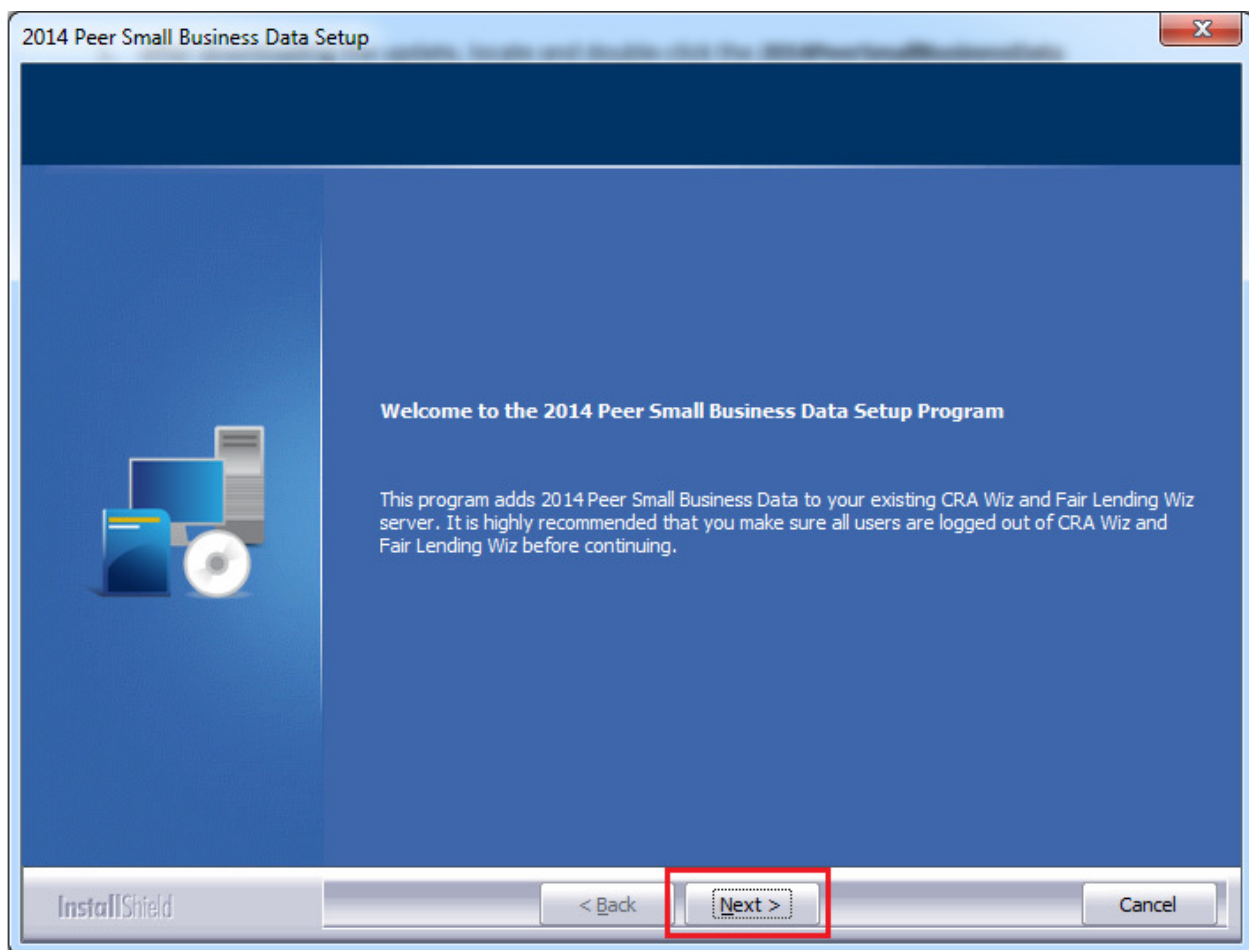
1. After downloading the update, locate and double-click the **2014PeerSmallBusinessData** installation file.

The installer displays the **Welcome** screen.

2. Follow the directions for each of the following screens.

Welcome Screen

Click the **Next** button:



The software displays the **Database Server Login** screen.

Database Server Login Screen

You use the **Database Server Login** screen to specify the SQL Server to which you are installing to, and also SQL Server login information.

2014 Peer Small Business Data Setup

Database Server Login
Select database server and authentication method

Database server that you are installing to:

Browse...

Connect using:

Windows authentication

SQL Server authentication using Login ID and password below

Login ID:

Password:

InstallShield < Back Next > Cancel

To configure SQL Server options, follow these steps:

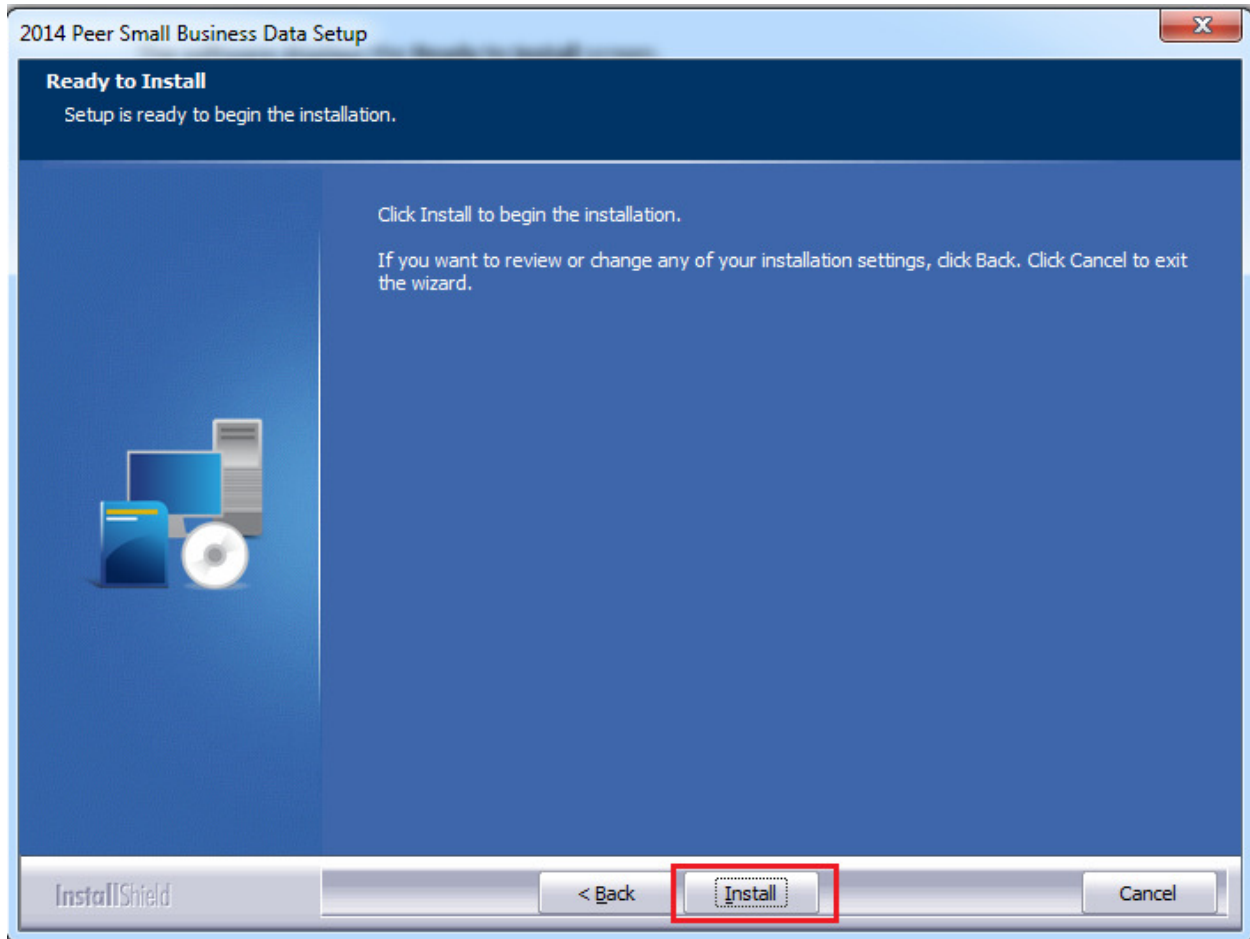
1. Do one of the following:
 - In the **Database server that you are installing to** field, enter the **SQL Server name and instance** to which you are installing the data.
Example: SVRBOS01\SQLEXPRESS
 - Click the **Browse** button and in the resultant dialog box, select the SQL Server.
2. Choose one of the following authentication options:
 - Use Windows Authentication
 - Use SQL Server Authentication - If you select this option, you must also enter your SQL Server account **User Name** and **Password** in the **User Name** and **Password** fields.

3. Click the **Next** button.

The software displays the **Ready to Install** screen.

Ready to Install Screen

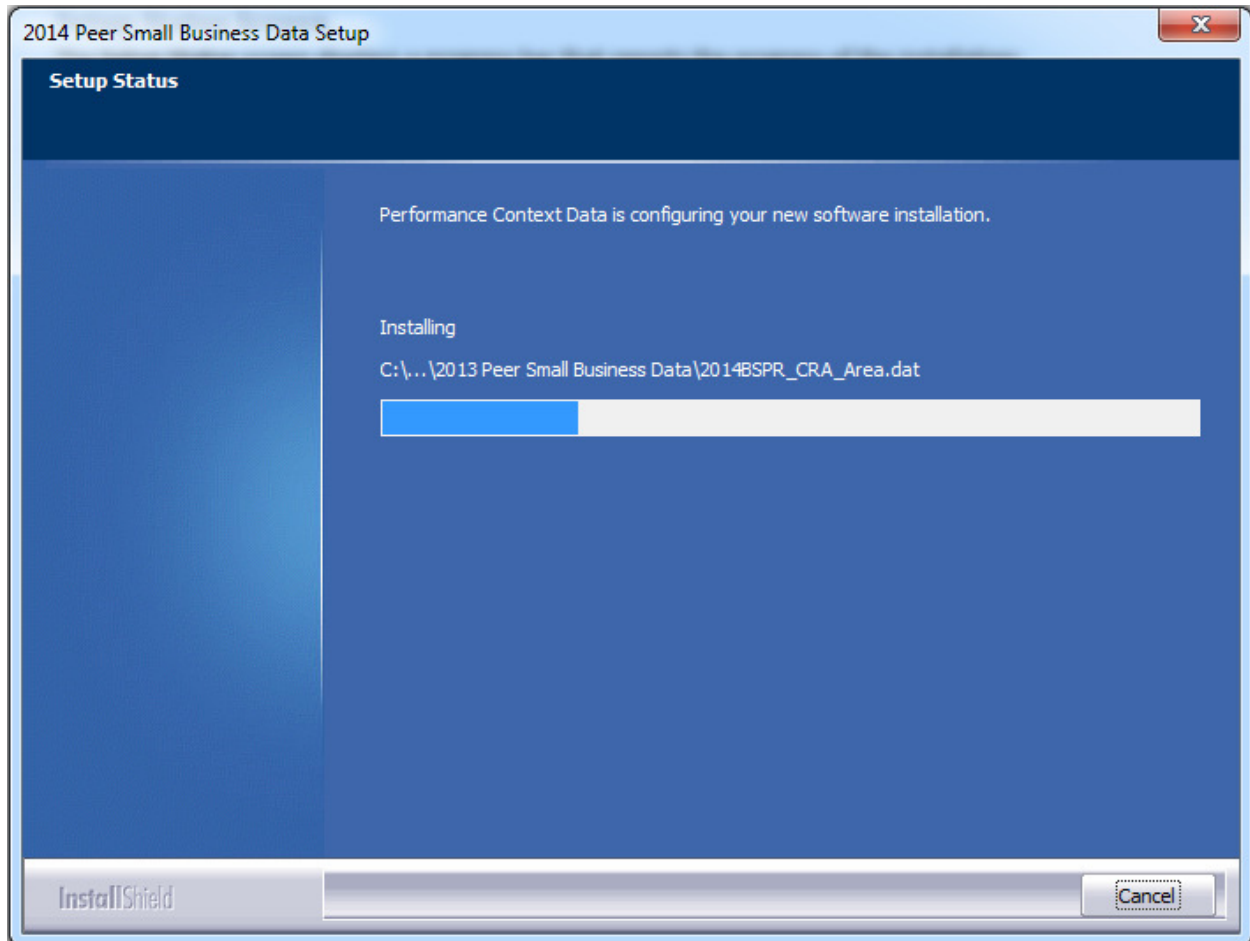
To begin installing the data sets, click the **Install** button:



The installer displays the **Setup Status** screen.

Setup Status Screen

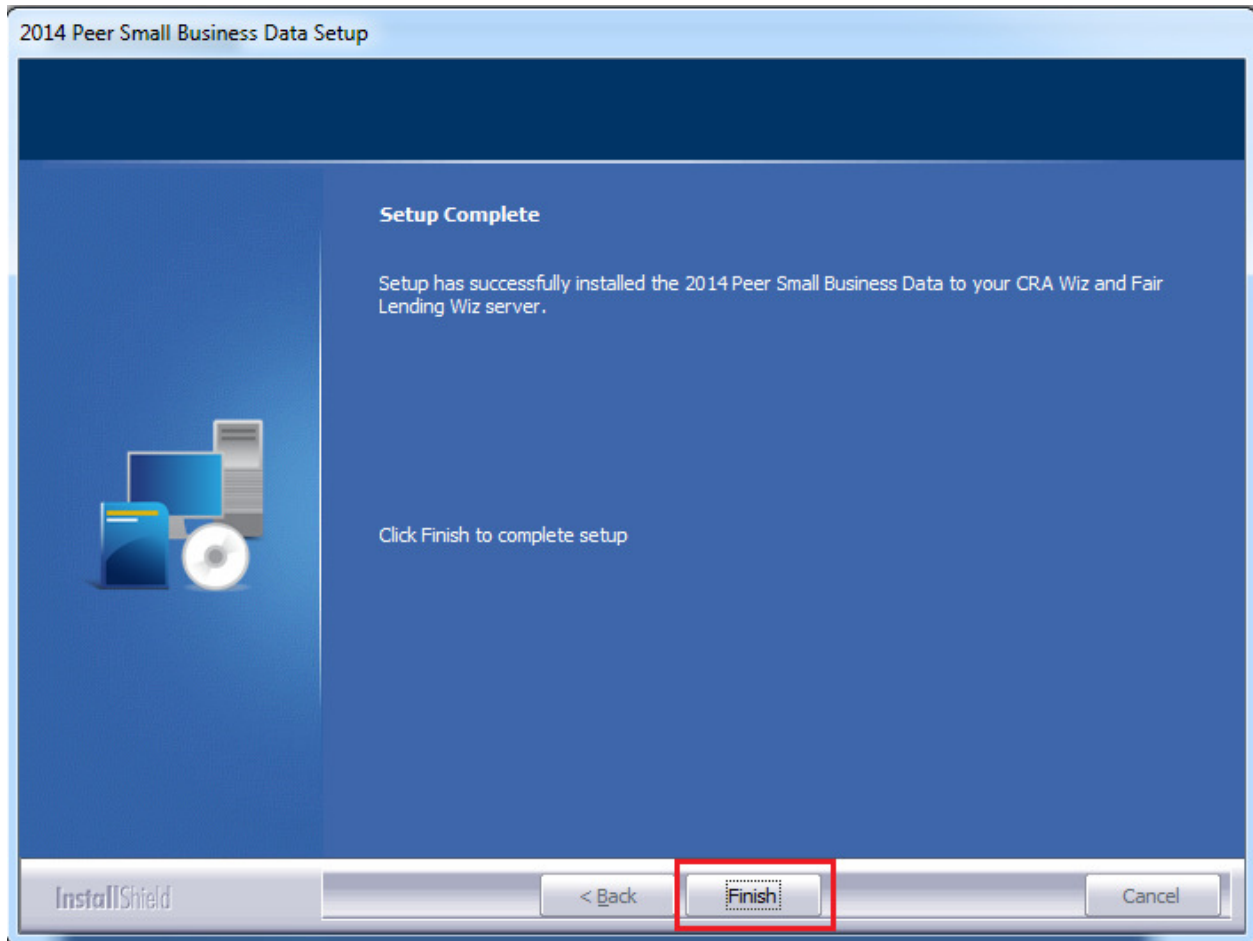
The **Setup Status** screen displays a progress bar that reports the progress of the installation:



When installation is complete, the installer displays the **Setup Complete** screen.

Setup Complete Screen

Click the **Finish** button:



Installation is complete.

About Wolters Kluwer Financial Services - Wolters Kluwer Financial Services provides audit, risk and compliance solutions that help financial organizations improve efficiency and effectiveness across their enterprise. Whether complying with regulatory requirements, addressing a single key risk, or working toward a holistic risk management strategy, more than 15,000 customers worldwide count on Wolters Kluwer Financial Services for a comprehensive and dynamic view of risk management and compliance. With more than 30 offices in over 20 countries, the company's prominent brands include: FRSGlobal, ARC Logics for Financial Services, PCi, Bankers Systems, VMP® Mortgage Solutions, AppOne®, GainsKeeper®, Capital Changes, NILS, AuthenticWeb™ and Uniform Forms™. Wolters Kluwer Financial Services is part of Wolters Kluwer, a leading global information services and publishing company with annual revenues of (2011) €3.4 billion (\$4.7 billion) and approximately 19,000 employees worldwide. Please visit our website for more information.

Wolters Kluwer Financial Services
130 Turner Street
Building 3, 4th Floor
Waltham, MA 02453
800.261.3111

© 2015 Wolters Kluwer Financial Services