



Consumer Compliance Solutions

# CRA *Wiz* and Fair Lending *Wiz* 7.0: 2014 Peer Lender Groups

Release Notes and Installation Instructions

Release Date: October 2015

**Table of Contents**

- Overview ..... 3
  - Who should install ..... 3
  - Where to install..... 3
  - Prerequisites ..... 3
  - Required permissions..... 3
  - Required free space ..... 3
  - Approximate install time..... 3
  - Confirming installation..... 3
- Installation Instructions ..... 4
  - Welcome Screen ..... 4
  - Database Server Login Screen..... 5
  - Ready to Install Screen..... 6
  - Setup Status Screen ..... 7
- Setup Complete Screen..... 8
- Appendix: 2014 Peer Groups List..... 9

## Overview

The **2014 Peer Lender Groups** update adds 2014 Peer Lender Groups to CRA *Wiz* & Fair Lending *Wiz* Peer reporting. With this update, you can analyze a group of lenders as a single institution, or filter for institutions submitted by that lender.

### Who should install

Any client licensed for Peer Mortgage Data should install this update. To determine if you are licensed for Peer Mortgage Data, go to the **System Maintenance** screen and select **License and Access Management**.

### Where to install

This update should be applied to the SQL server where CRA *Wiz* databases are installed. No client or application-side installation is required.

### Prerequisites

**CRA *Wiz* and Fair Lending *Wiz* 6.9 or 7.0 is required to install this update.** To check your CRA *Wiz* and Fair Lending *Wiz* version, go to the program menu bar and select **Help > About CRA *Wiz***. Build numbers starting with "69" or "70" are acceptable.

### Required permissions

This update is installed as a single database, so both Windows read/write permissions and SQL Server database creation permissions are required. Wolters Kluwer Financial Services recommends that the user running the install have both a Windows admin and SQL Server admin login credentials.

### Required free space

A few megabytes (MB).

### Approximate install time

Less than five (5) seconds, depending on system configuration.

### Confirming installation

Once the installation is complete, you can verify the installation setting a Peer file as the active file. Then go to **Analysis > Reports**. Click **Tools > Manage Lender Groups**. You should see 40 groups, starting with 2014.

## Installation Instructions

To install 2014 Peer Lender Groups, follow these steps:

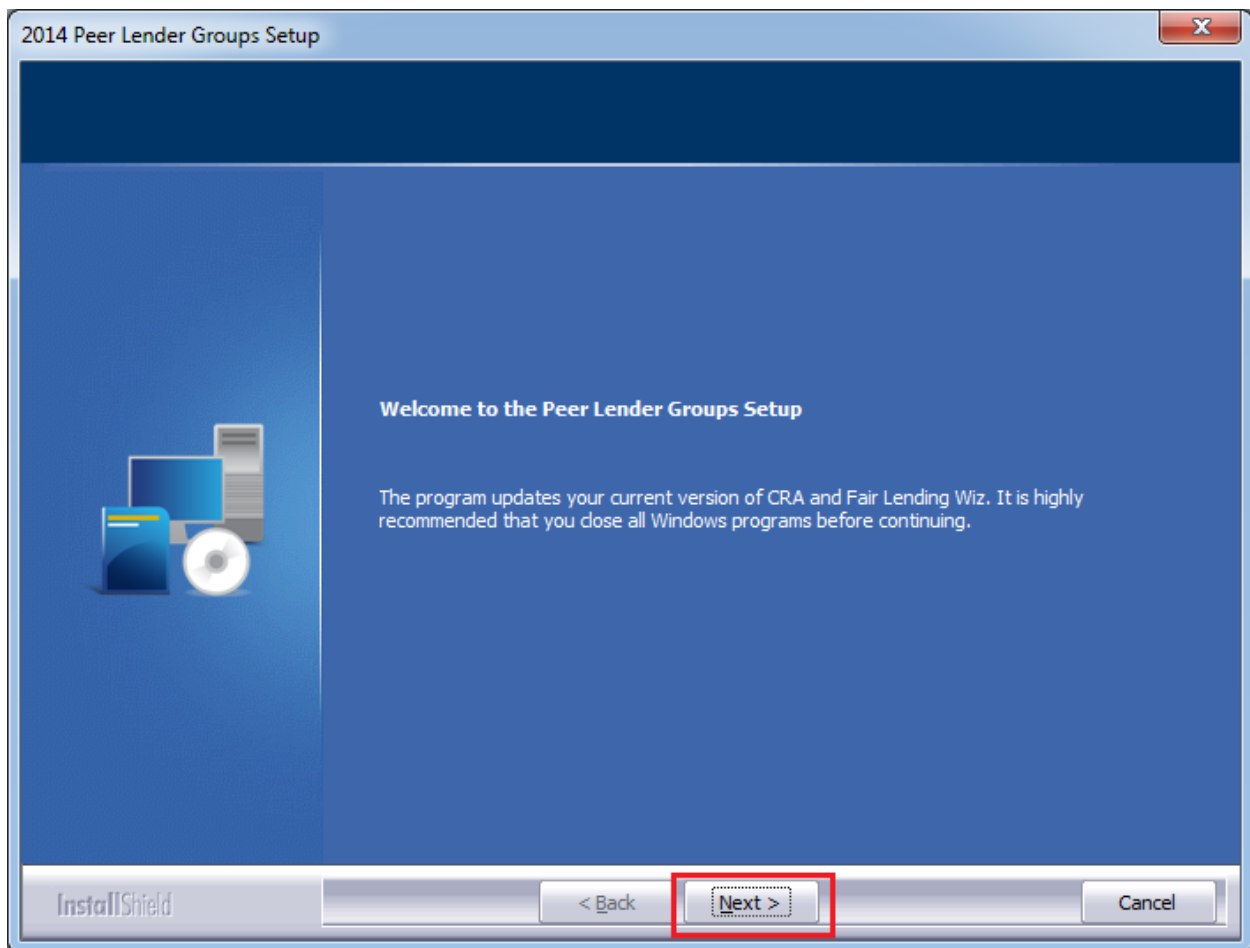
1. After downloading the update, locate and double-click the **2014PeerLenderGroups** installation file.

The installer displays the **Welcome** screen.

2. Follow the directions for each of the following screens.

### Welcome Screen

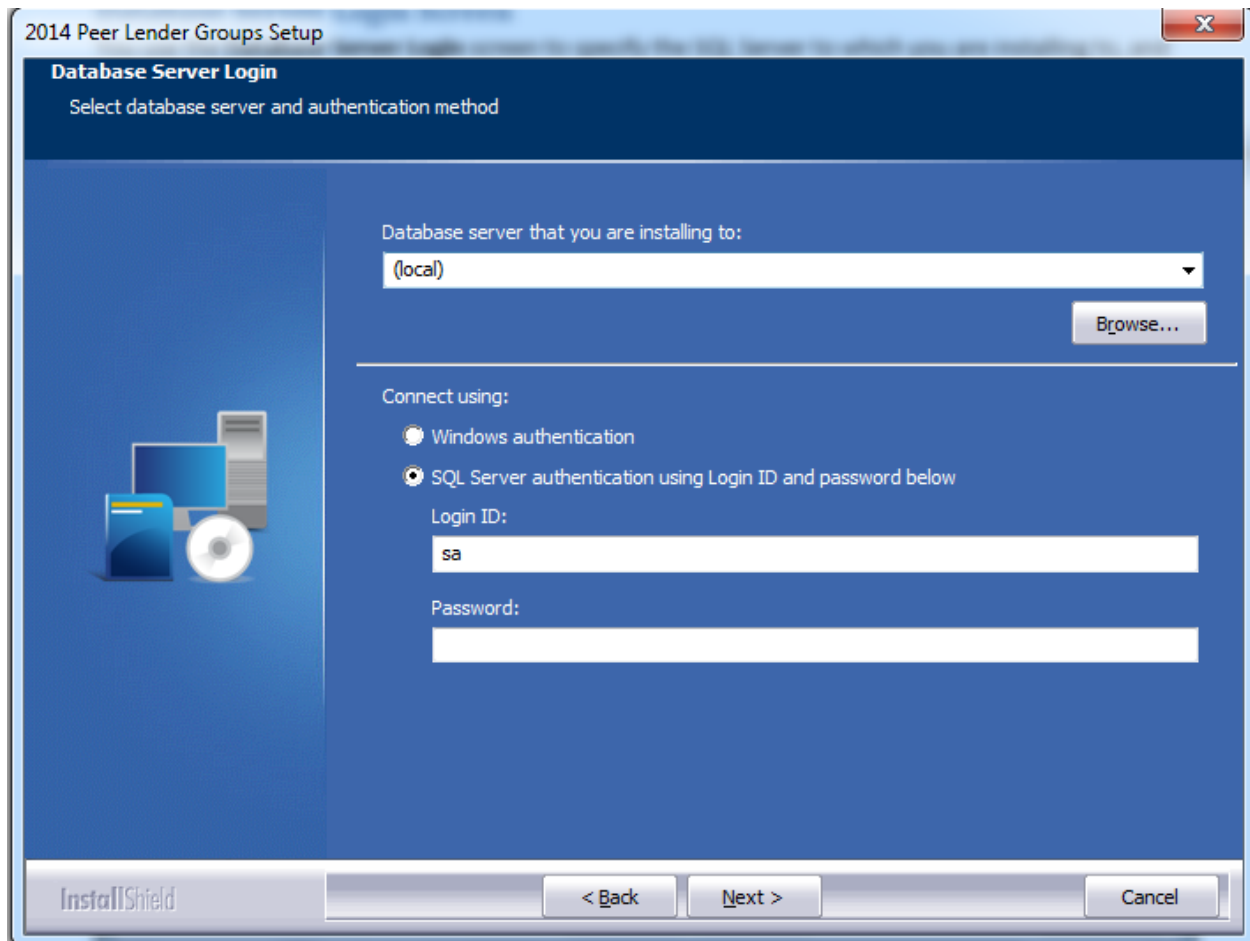
Click the **Next** button:



The software displays the **Database Server Login** screen.

## Database Server Login Screen

You use the **Database Server Login** screen to specify the SQL Server to which you are installing to, and also SQL Server login information.



To configure SQL Server options, follow these steps:

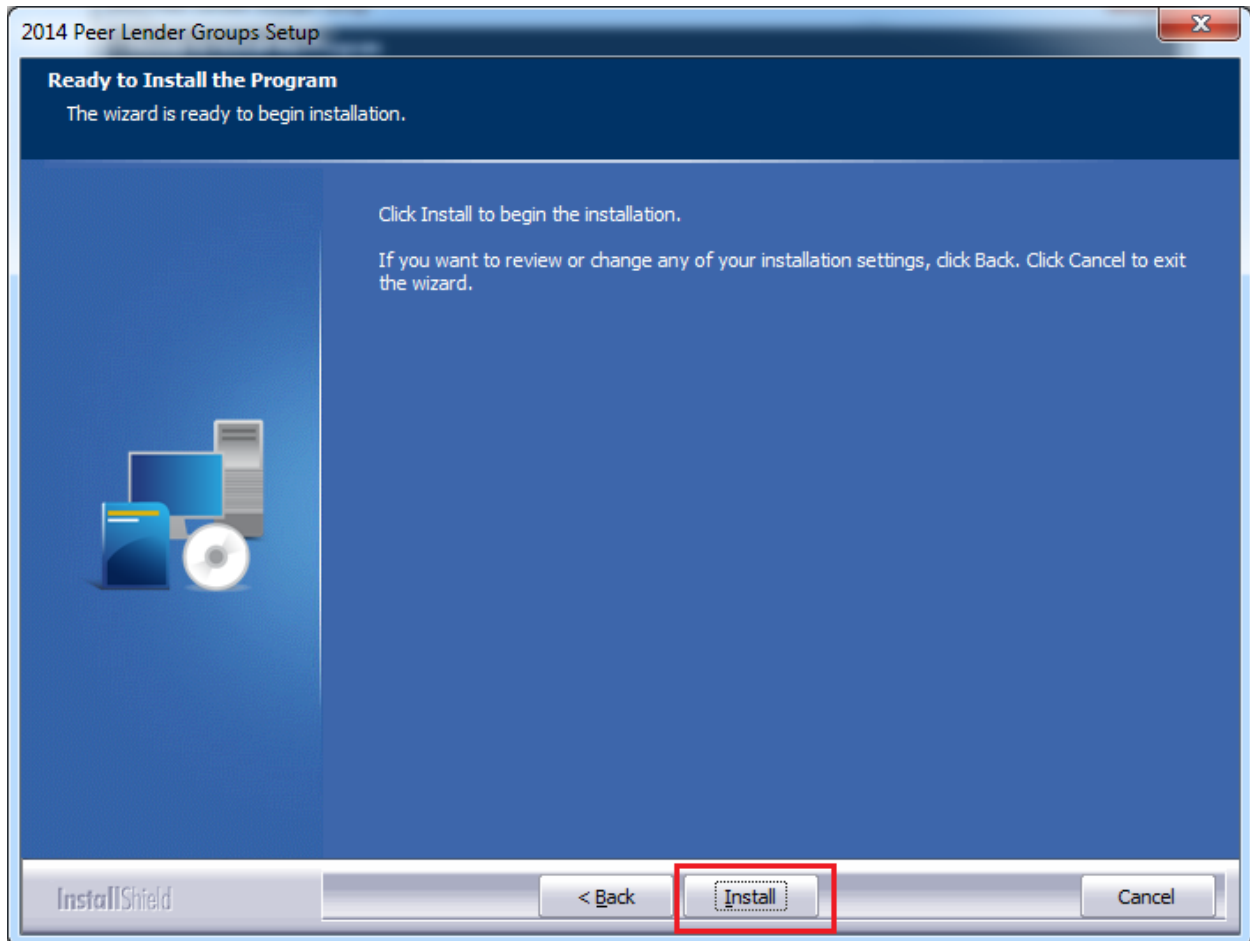
1. Do one of the following:
  - In the **Database server that you are installing to** field, enter the **SQL Server name and instance** to which you are installing the data.  
  
**Example:** SVRBOS01\SQLEXPRESS
  - Click the **Browse** button and in the resultant dialog box, select the SQL Server.
2. Choose one of the following authentication options:
  - Use Windows Authentication
  - Use SQL Server Authentication - If you select this option, you must also enter your SQL Server account **User Name** and **Password** in the **User Name** and **Password** fields.

3. Click the **Next** button.

The software displays the **Ready to Install** screen.

## Ready to Install Screen

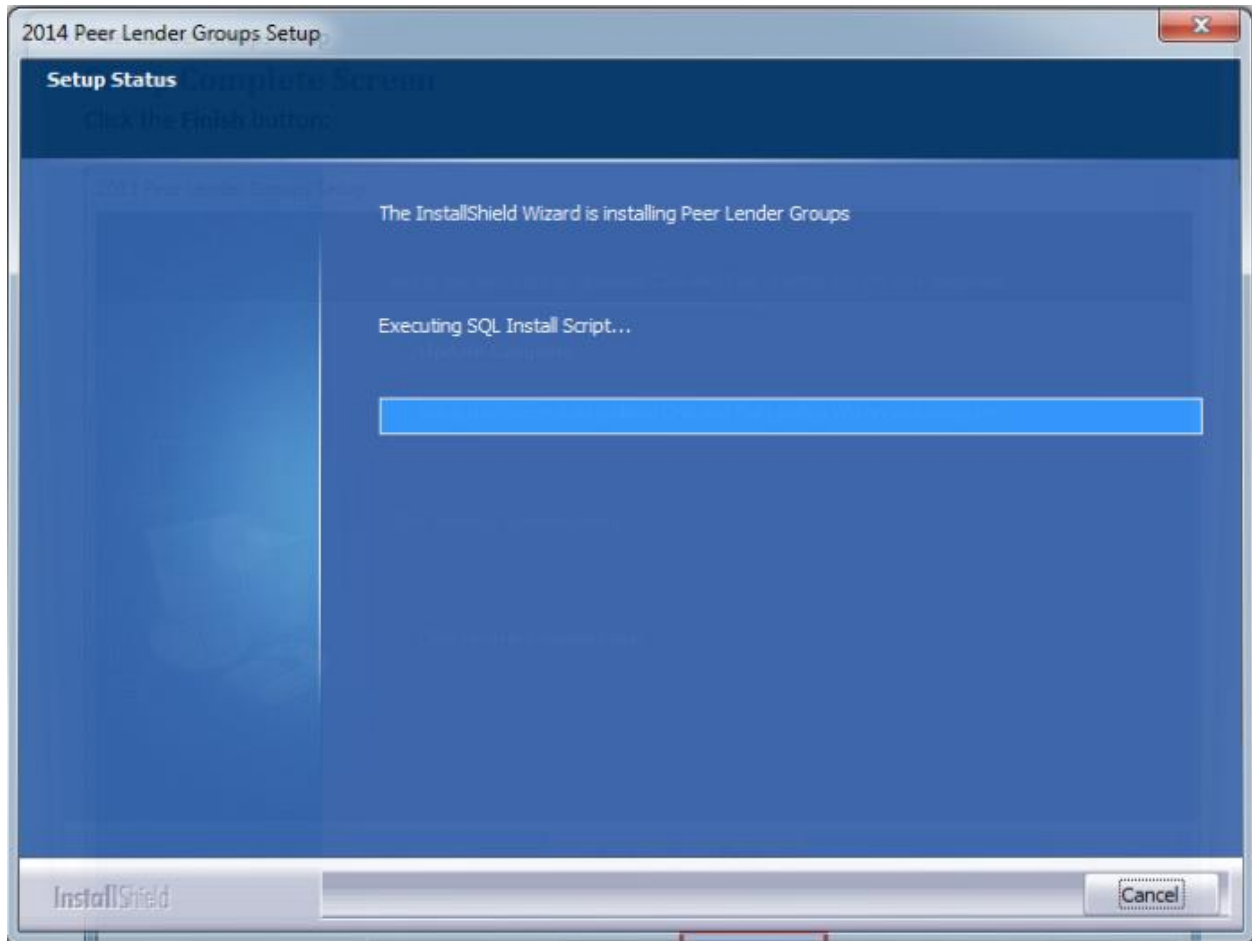
To begin installing the data, click the **Install** button:



The installer displays the **Setup Status** screen.

## Setup Status Screen

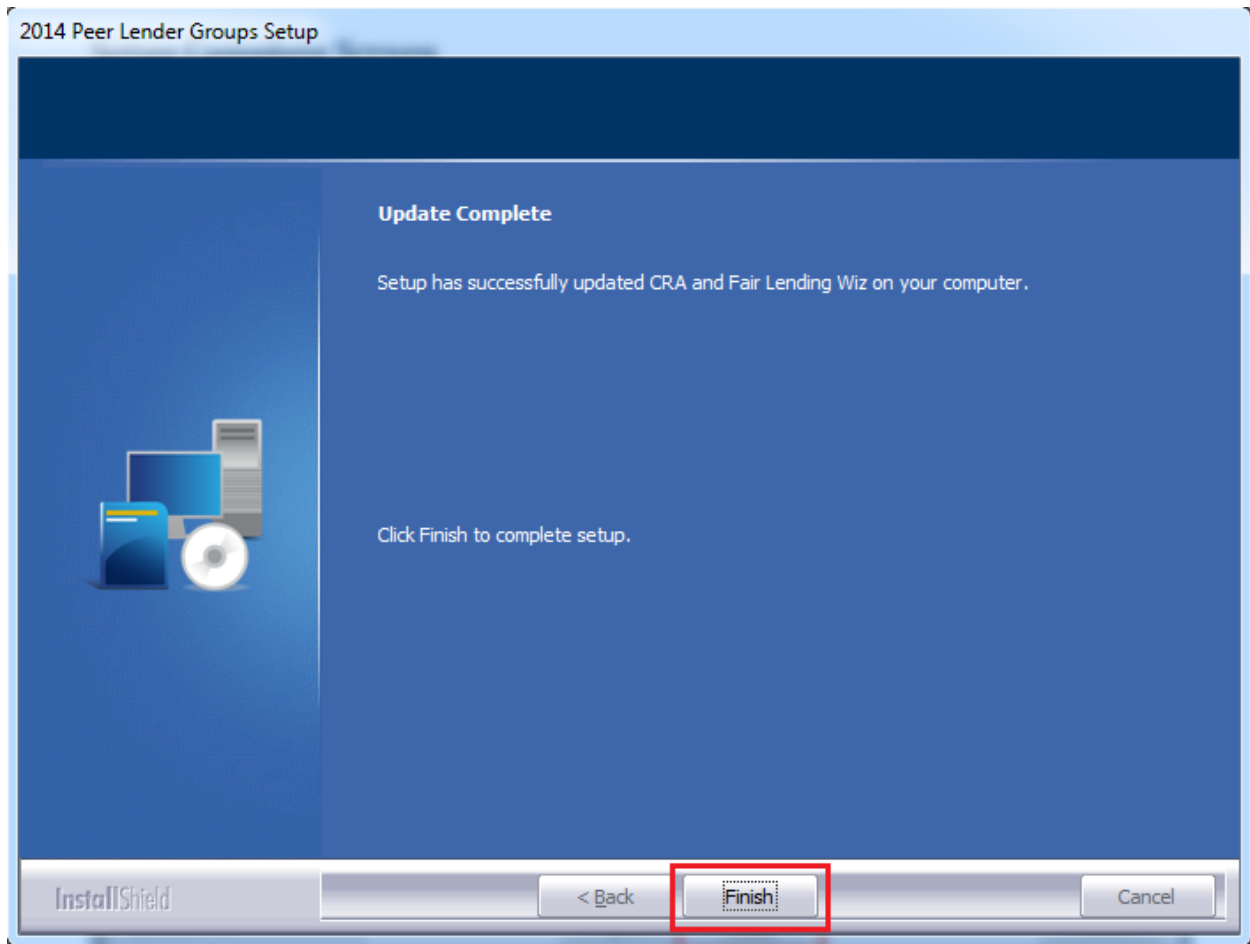
The **Setup Status** screen displays a progress bar that reports the progress of the installation:



When installation is complete, the installer displays the **Setup Complete** screen.

## Setup Complete Screen

Click the **Finish** button:



Installation is complete.



## Appendix: 2014 Peer Groups List

2014 HMDA Lender Groups	2014 CRA Lender Groups
2014 PEER HMDA - BANK OF AMERICA NA	2014 PEER CRA - ALLY FINANCIAL
2014 PEER HMDA - BBT	2014 PEER CRA - AMERICAN EXPRESS
2014 PEER HMDA - BOKF NA	2014 PEER CRA - BANK OF AMERICA
2014 PEER HMDA - CHASE	2014 PEER CRA – BBT
2014 PEER HMDA - CITIGROUP	2014 PEER CRA - CAPITAL ONE FINANCIAL CORPORATION
2014 PEER HMDA - DISCOVER BANK	2014 PEER CRA – CHASE
2014 PEER HMDA - EVERBANK	2014 PEER CRA – CITIGROUP
2014 PEER HMDA - FIFTH THIRD BANK	2014 PEER CRA - COMPASS BANK
2014 PEER HMDA - FLAGSTAR BANK	2014 PEER CRA - DISCOVER BANK
2014 PEER HMDA - HUNTINGTON NATIONAL BANK	2014 PEER CRA - FIRST NATIONAL BANK OF OMAHA
2014 PEER HMDA - MT Bank	2014 PEER CRA - GE CAPITAL
2014 PEER HMDA - PLAINS CAPITAL BANK	2014 PEER CRA - JOHN DEERE FINANCIAL
2014 PEER HMDA - PNC BANK NA	2014 PEER CRA – KEYBANK
2014 PEER HMDA - RBS CITIZENS	2014 PEER CRA - PNC BANK
2014 PEER HMDA - REGIONS BANK	2014 PEER CRA - REGIONS BANK
2014 PEER HMDA - SUNTRUST	2014 PEER CRA – SUNTRUST
2014 PEER HMDA - TD BANK	2014 PEER CRA - TD BANK
2014 PEER HMDA - US BANK	2014 PEER CRA - TEXAS CAPITAL BANK
2014 PEER HMDA - USAA BANK	2014 PEER CRA - US BANK
2014 PEER HMDA - WELLS FARGO	2014 PEER CRA - WELLS FARGO

**About Wolters Kluwer Financial Services** - Wolters Kluwer Financial Services provides audit, risk and compliance solutions that help financial organizations improve efficiency and effectiveness across their enterprise. Whether complying with regulatory requirements, addressing a single key risk, or working toward a holistic risk management strategy, more than 15,000 customers worldwide count on Wolters Kluwer Financial Services for a comprehensive and dynamic view of risk management and compliance. With more than 30 offices in over 20 countries, the company's prominent brands include: FRSGlobal, ARC Logics for Financial Services, PCi, Bankers Systems, VMP® Mortgage Solutions, AppOne®, GainsKeeper®, Capital Changes, NILS, AuthenticWeb™ and Uniform Forms™. Wolters Kluwer Financial Services is part of Wolters Kluwer, a leading global information services and publishing company with annual revenues of (2011) €3.4 billion (\$4.7 billion) and approximately 19,000 employees worldwide. Please visit our website for more information.

**Wolters Kluwer Financial Services**  
130 Turner Street  
Building 3, 4th Floor  
Waltham, MA 02453  
800.261.3111

© 2015 Wolters Kluwer Financial Services