

2012 Performance Context Data

The **Performance Context Data** installation program installs the following data sets:

- ✓ 2011 Peer Deposit Data (2000 Census)
- ✓ 2011 Peer Deposit Data (2010 Census)
- ✓ 2012 Business Demographic Data
- ✓ 2012 Projected Demographic Data
- ✓ 2011 Peer Small Business Data

Note:

The new data source for the Projected Demographic Data is the **American Community Survey**. Therefor this year the numbers will match the 2010 census values, in future releases it will reflect the current official census values for the given year.

In order to use these data sets you should be running CRA *Wiz* and Fair Lending *Wiz* 6.7 or later, and Microsoft Windows 2000 or later.

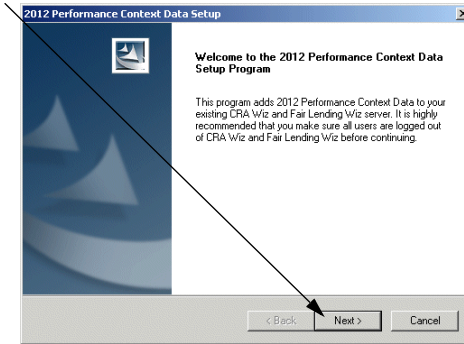
To install Performance Context data, follow these steps:

1. After downloading the update, locate and double-click the **2012PerformanceContextData** installation file.

The installer displays the **Welcome** screen.

2. Follow the directions for each of the following screens.

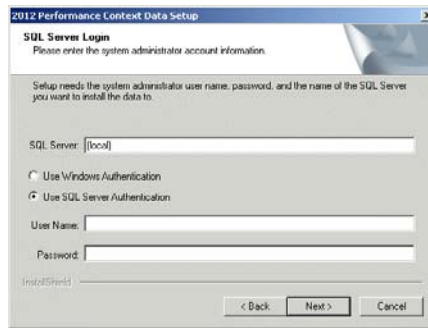
Welcome Screen Click the **Next** button.
The software displays the **Database Server** screen.



Database Server Screen Use this screen to enter the name of the **SQL Server** and to configure authentication options.

To configure login options, follow these steps:

1. In the **SQL Server** field, Enter the name of the SQL Server to which you are installing the data.
2. Choose one of the following authentication options:
 - ✓ Use Windows Authentication
 - ✓ Use SQL Server Authentication - If you select this option, you must also enter your SQL Server account **User Name** and **Password** in the **User Name** and **Password** fields.
3. Click the **Next** button.



The software displays the **Setup Type** screen.

Setup Screen You use this screen to select the type of installation you want to perform.

To select an installation type, follow these steps:

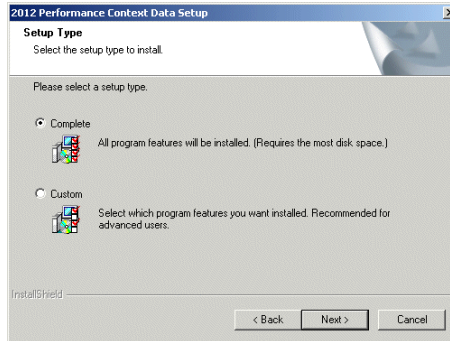
1. Select one of the following options:

- ✓ Complete - select to install all data sets to your computer.
- ✓ Custom - select to install only specific data sets.

2. Click the **Next** button.

The software displays one of the following screens:

- ✓ If you selected the **Complete** option, the software displays the **Ready to Install** screen. For more information, refer to **Ready to Install Screen** on page 5.
- ✓ If you selected the **Custom** option, the software displays the **Select Features** screen. For more information refer to the following section.

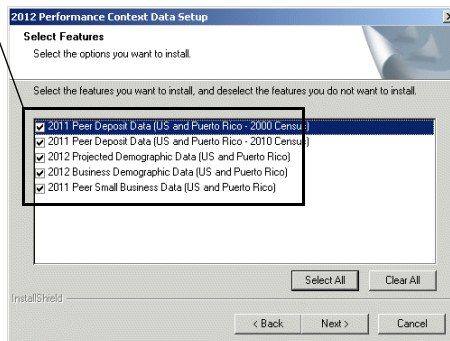


Select Features Screen You use the **Select Features** screen to select the data sets you want to install.

Note:

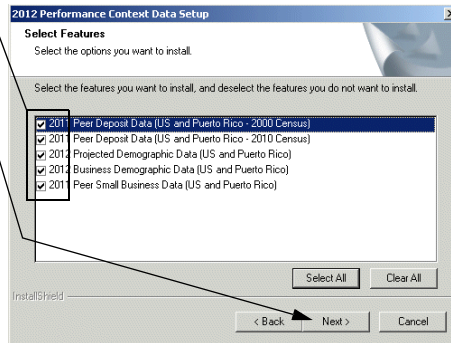
The installer displays this screen only if you select **Custom** on the **Select Setup Type** screen.

To select components, follow these steps:



1. Select one or more of the available components.
2. Click the **Next** button.

The software displays the **Choose Destination Folders** screen.



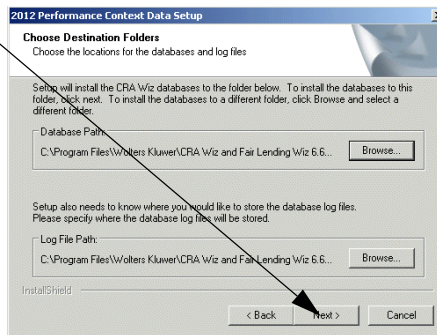
Choose Destination Folders Screen

You use the **Choose Destination Folders** screen to select the location to which you want to install the Performance Context databases. You can either install the data to the default location or you can select an alternate location.

1. Do one of the following:

- ✓ To install to the default location, click the **Next** button.

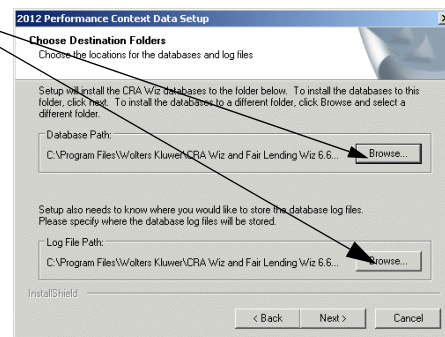
The software displays the **Ready to Install** screen. For more information, refer to **Ready to Install Screen** on page 5.



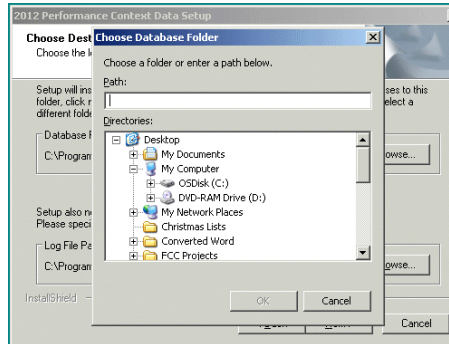
- ✓ To install to an alternate location, follow these steps:

- 1.1. Click the **Browse** button for the data path you want to change.

The software displays the **Choose Folder** dialog box.



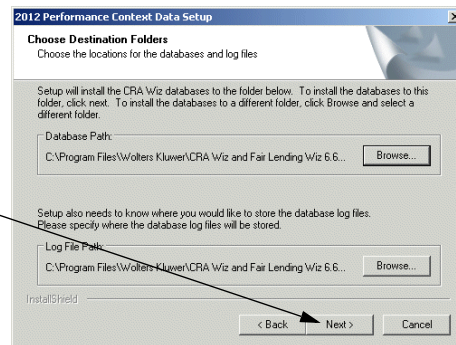
- 1.2. Use the **Directories** tree view to select an alternate installation location.
- 1.3. Click the **OK** button.



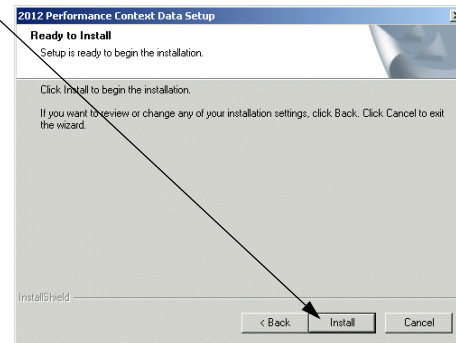
The software makes the **Choose Destination Location** screen the active screen.

- 1.4. Click the **Next** button.

The software displays the **Ready to Install** screen.

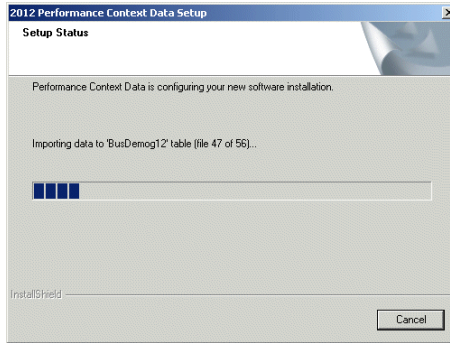


- Ready to Install Screen** To begin installing the data sets, click the **Install** button.
- The installer displays the **Setup Status** screen.



Installation Instructions

Setup Status Screen The **Setup Status** screen displays a progress bar that reports the progress of the installation.



Setup Complete Screen Click the **Finish** button. Installation is complete.

