



Consumer Compliance Solutions

# CRA *Wiz* and Fair Lending *Wiz* 7.1: 2015 Performance Context Data

Release Notes and Installation Instructions

Release Date: March 2016

## Table of Contents

Overview .....	3
Who should install .....	3
Where to install.....	3
Prerequisites .....	3
Required Permissions .....	3
Required free space .....	3
Approximate install time.....	3
Confirming installation.....	3
Installation Instructions .....	4
Welcome Screen .....	4
Database Server Login Screen.....	5
Setup Type Screen.....	6
Select Features Screen.....	7
Choose Destination Folders Screen .....	8
Ready to Install Screen.....	10
Setup Status Screen .....	11
Setup Complete Screen.....	12

## Overview

The 2015 Performance Context Data installation package allows users to add the following datasets to CRA *Wiz* and Fair Lending *Wiz* with one installation:

- 2014 Peer Branch & Deposit
- 2014 Peer Small Business
- 2015 Business Demographics
- 2015 Projected Demographics

Details for each individual dataset can be found in their respective release documentation on the **Wiz Web Center**.

## Who should install

Any client licensed for one or more of the datasets above that has not already included them in CRA *Wiz* and Fair Lending *Wiz* should run this install. To determine if you are licensed for a dataset, go to the **System Maintenance** screen and select **License and Access Management**.

## Where to install

This dataset should be installed on the SQL Server where CRA *Wiz* and Fair Lending *Wiz* is hosted. No client installation is required.

## Prerequisites

**CRA *Wiz* and Fair Lending *Wiz* 7.1 is required to install this update.** To check your CRA *Wiz* and Fair Lending *Wiz* version, go to the program menu bar and select **Help > About CRA *Wiz***. Build numbers starting with "71" are acceptable.

## Required Permissions

This update is installs individual tables on your SQL server, so both Windows read/write permissions and SQL Server table creation permissions are required. Wolters Kluwer Financial Services recommends that the user running the install have both Windows admin and SQL Server admin login credentials.

## Required free space

Minimum of 2.4 GB

## Approximate install time

10 minutes

## Confirming installation

Steps to confirm installation vary by which datasets were selected to install. Please refer to each dataset's respective release documentation for steps to confirm your installation.

## Installation Instructions

To install 2015 Performance Context Data, follow these steps:

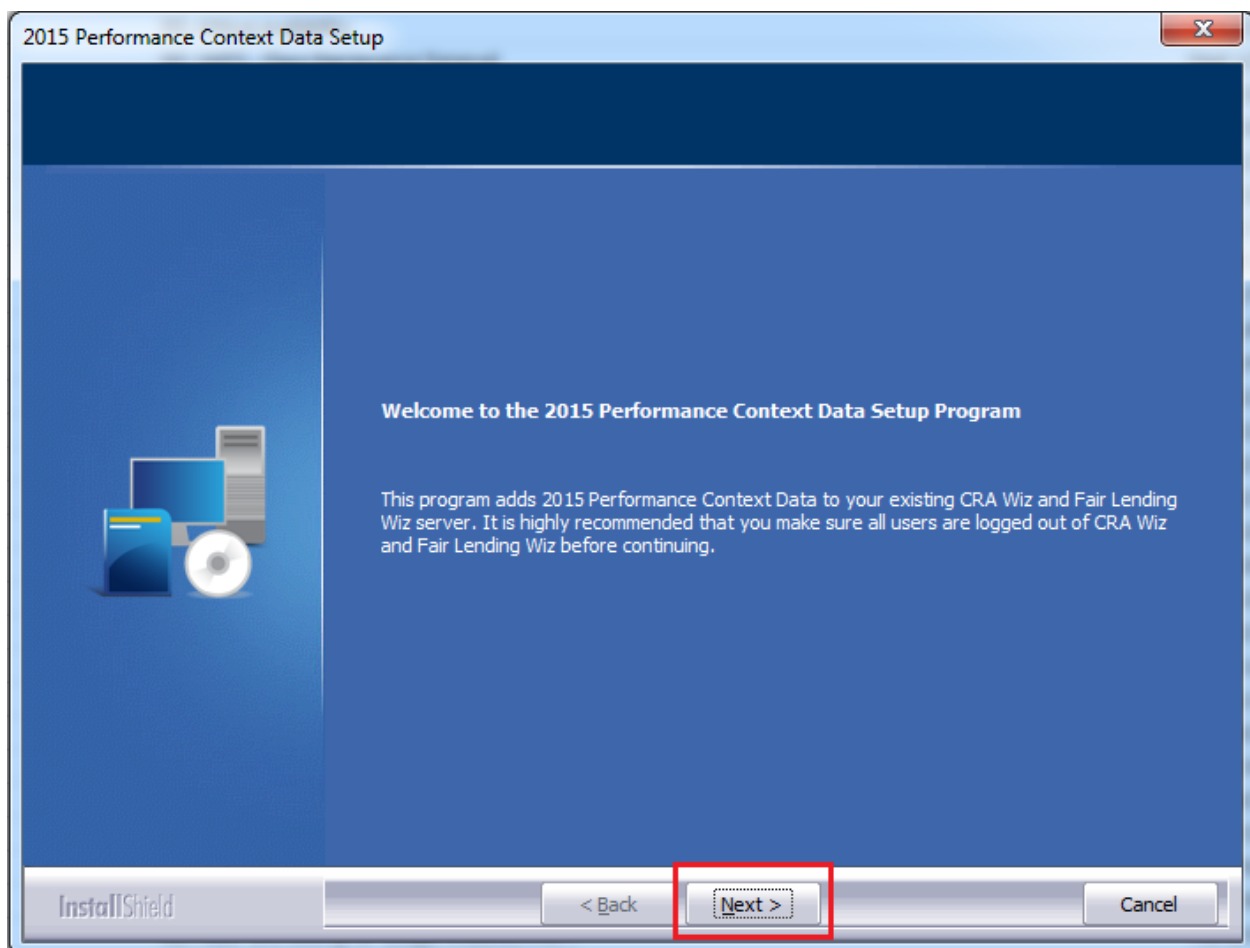
1. After downloading the update, locate and double-click the **2015PerformanceContextData** installation file.

The installer displays the **Welcome** screen.

2. Follow the directions for each of the following screens.

### Welcome Screen

Click the **Next** button:



The software displays the **Database Server Login** screen.

## Database Server Login Screen

You use the **Database Server Login** screen to specify the SQL Server to which you are installing to, and also SQL Server login information.

To configure SQL Server options, follow these steps:

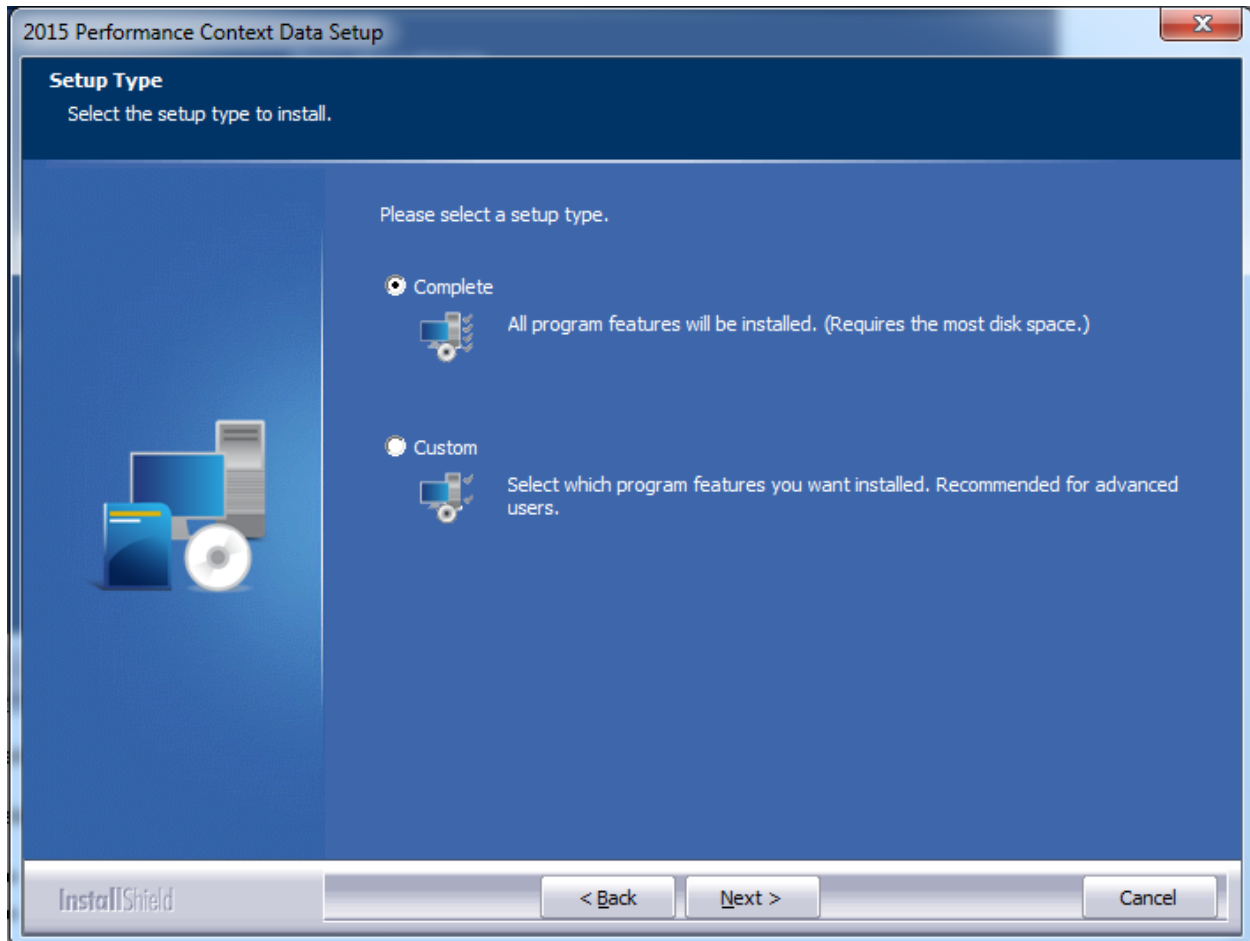
1. Do one of the following:
  - In the **Database server that you are installing to** field, enter the **SQL Server name and instance** to which you are installing the data.  
  
**Example:** SVRBOS01\SQLEXPRESS
  - Click the **Browse** button and in the resultant dialog box, select the SQL Server.
2. Choose one of the following authentication options:
  - Use Windows Authentication
  - Use SQL Server Authentication - If you select this option, you must also enter your SQL Server account **User Name** and **Password** in the **User Name** and **Password** fields.

3. Click the **Next** button.

The software displays the **Setup Type** screen.

## Setup Type Screen

You use this screen to select the type of installation you want to perform:



To select an installation type, follow these steps:

1. Select one of the following options:

- Complete - select to install all data sets to your computer.
- Custom - select to install only specific data sets.

2. Click the **Next** button.

The software displays one of the following screens:

- If you selected the **Complete** option, the software displays the **Ready to Install** screen. For more information, refer to [Ready to Install Screen](#) on page 10.

- If you selected the **Custom** option, the software displays the **Select Features** screen. For more information refer to the following section.

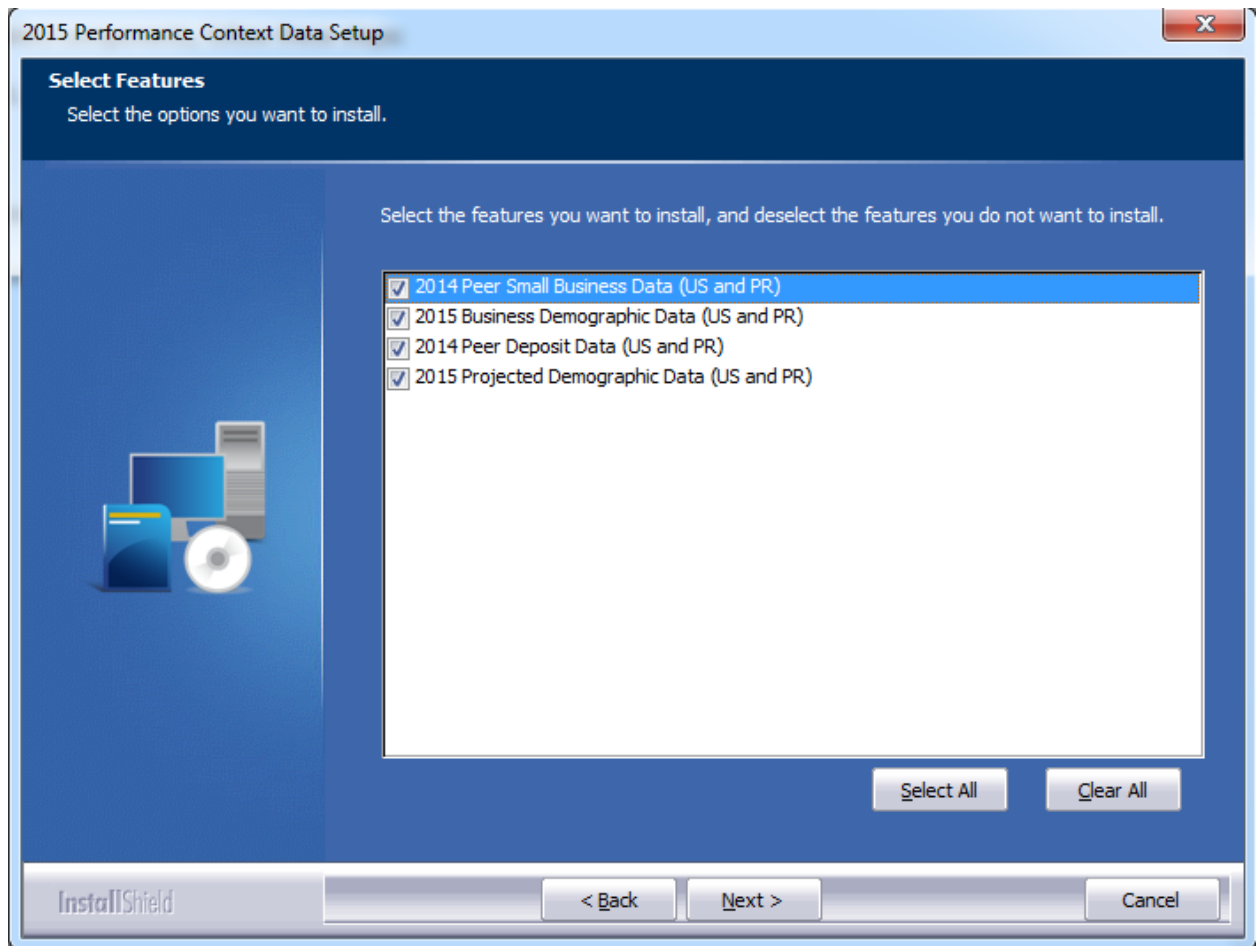
## Select Features Screen

You use the **Select Features** screen to select the data sets you want to install.

**Note:** The installer displays this screen only if you select **Custom** on the **Select Setup Type** screen.

To select components, follow these steps:

1. Select (or deselect) one or more of the available components:

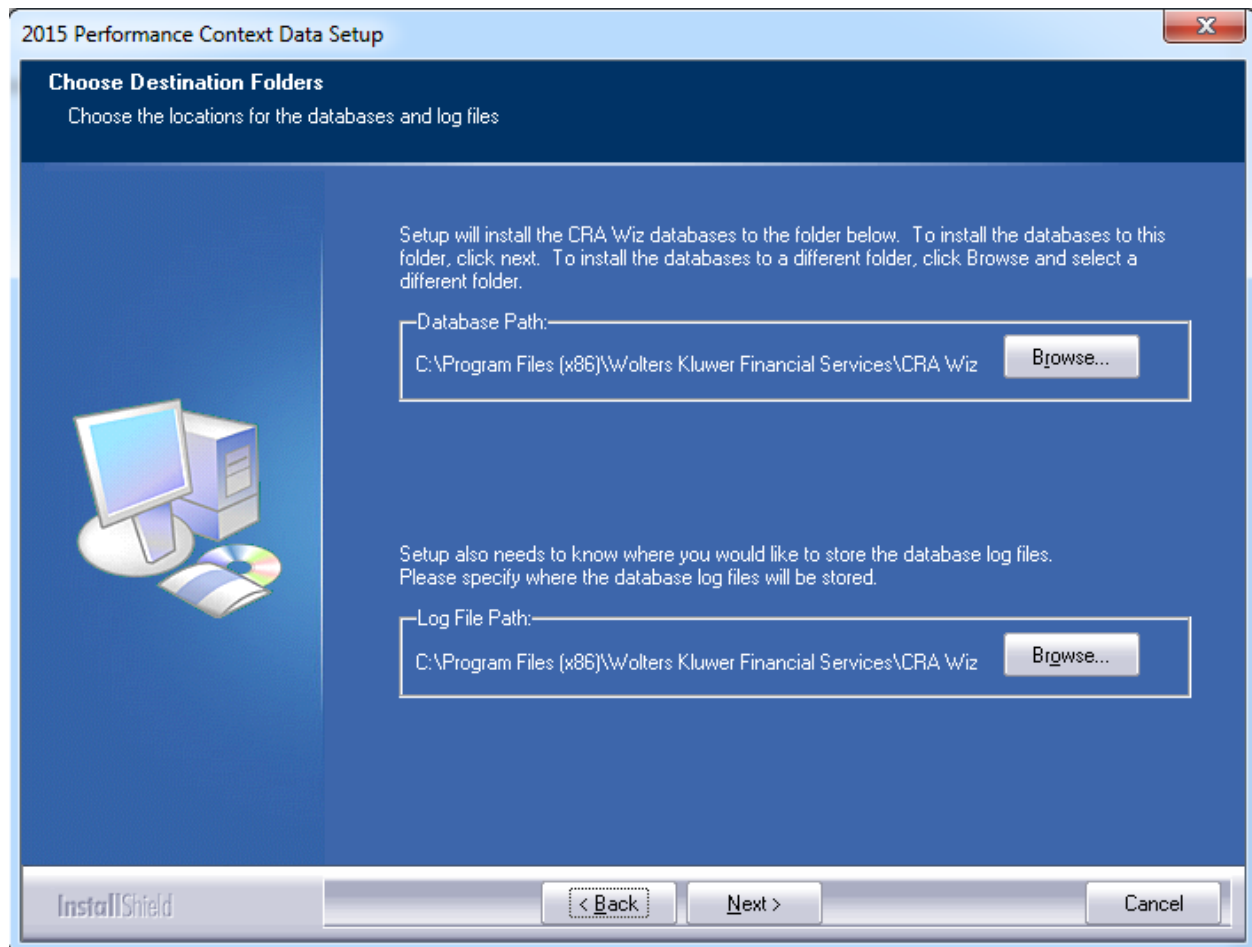


2. Click the **Next** button.

The software displays the **Choose Destination Folders** screen.

## Choose Destination Folders Screen

You use this screen to select the location to which you want to install the Performance Context databases. You can either install the data to the default location or you can select an alternate location:



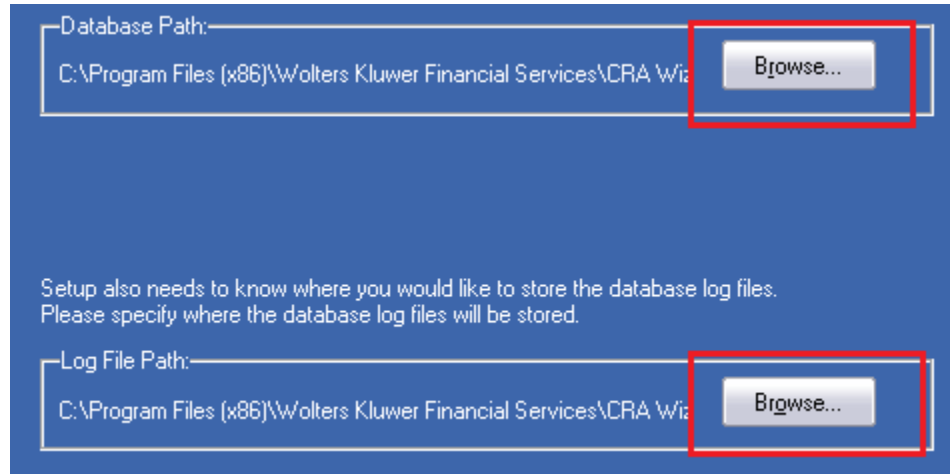
Do one of the following:

- To install to the default location, click the **Next** button.

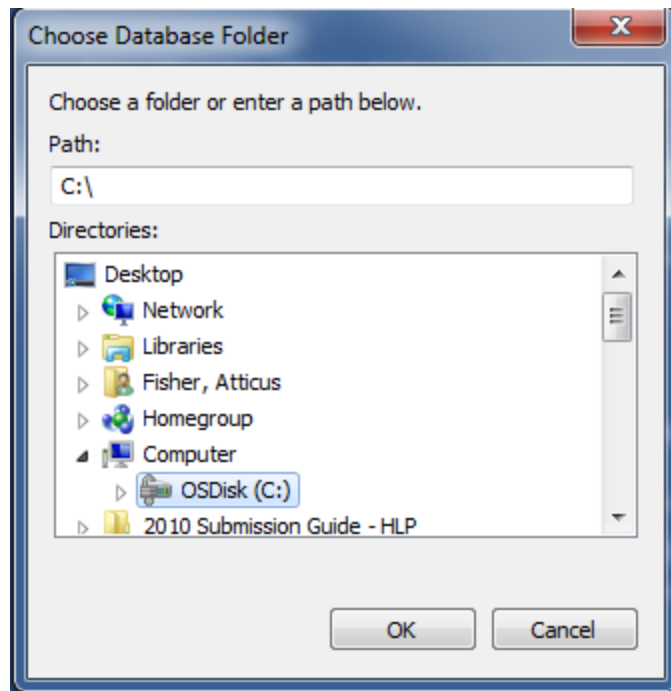
The software displays the **Ready to Install** screen. For more information, refer to [Ready to Install Screen](#) on page 10.

- To install to an alternate location, follow these steps:
  1. Click the **Browse** button for the data path you want to change:





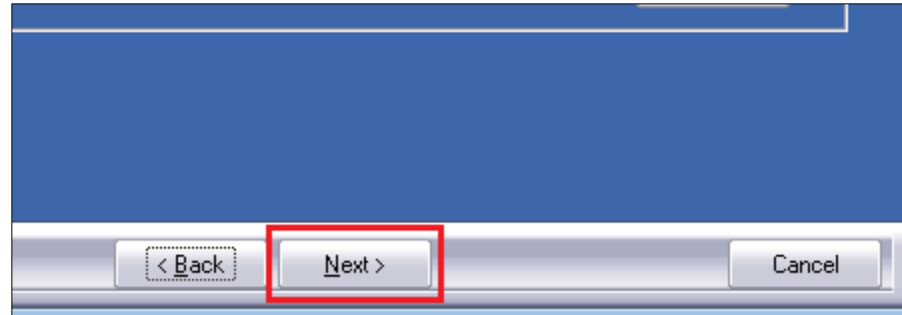
The software displays the **Choose Folder** dialog box:



2. Use the **Directories** tree view to select an alternate installation location.
3. Click the **OK** button.

The software makes the **Choose Destination Location** screen the active screen.

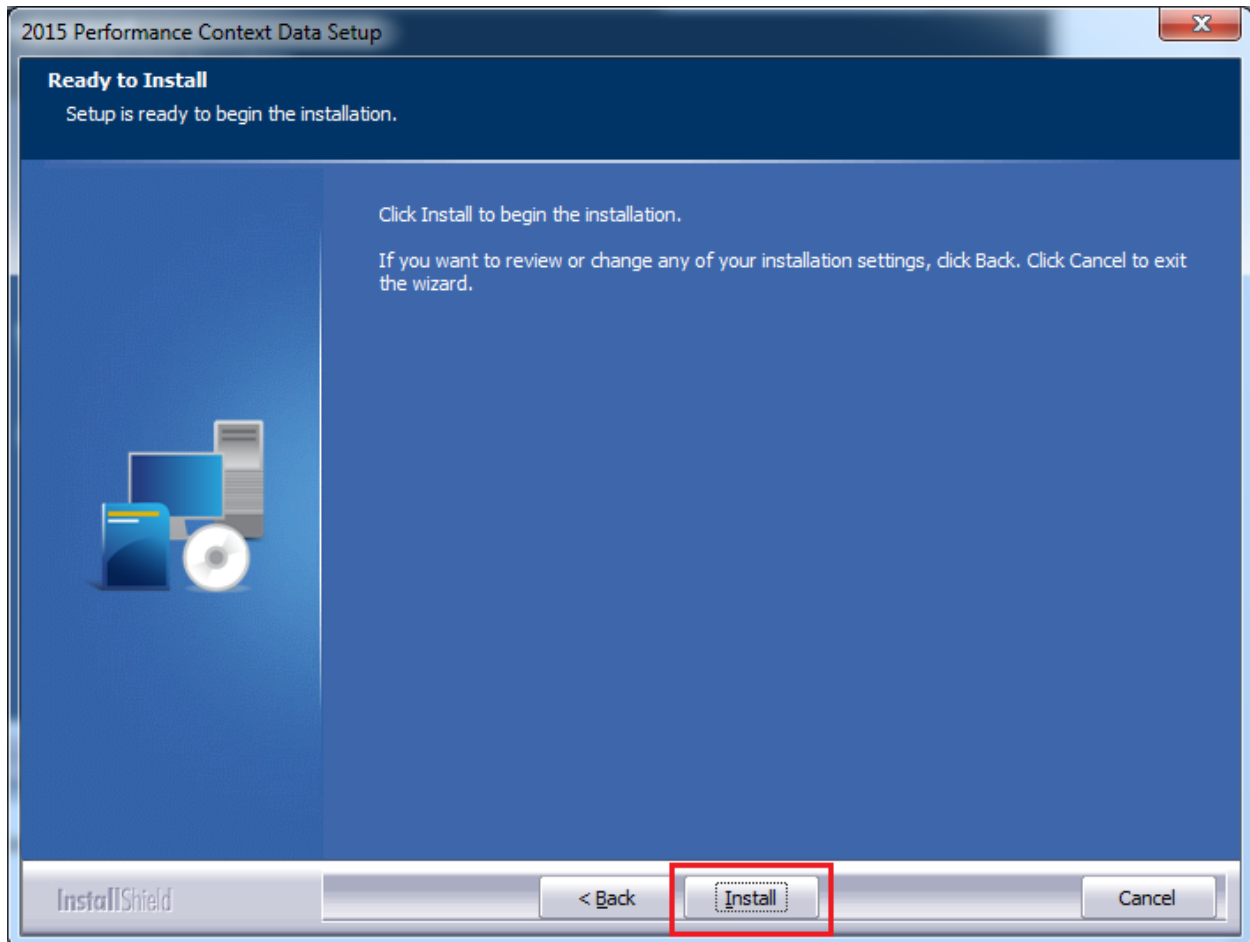
4. Click the **Next** button:



The software displays the **Ready to Install** screen.

## Ready to Install Screen

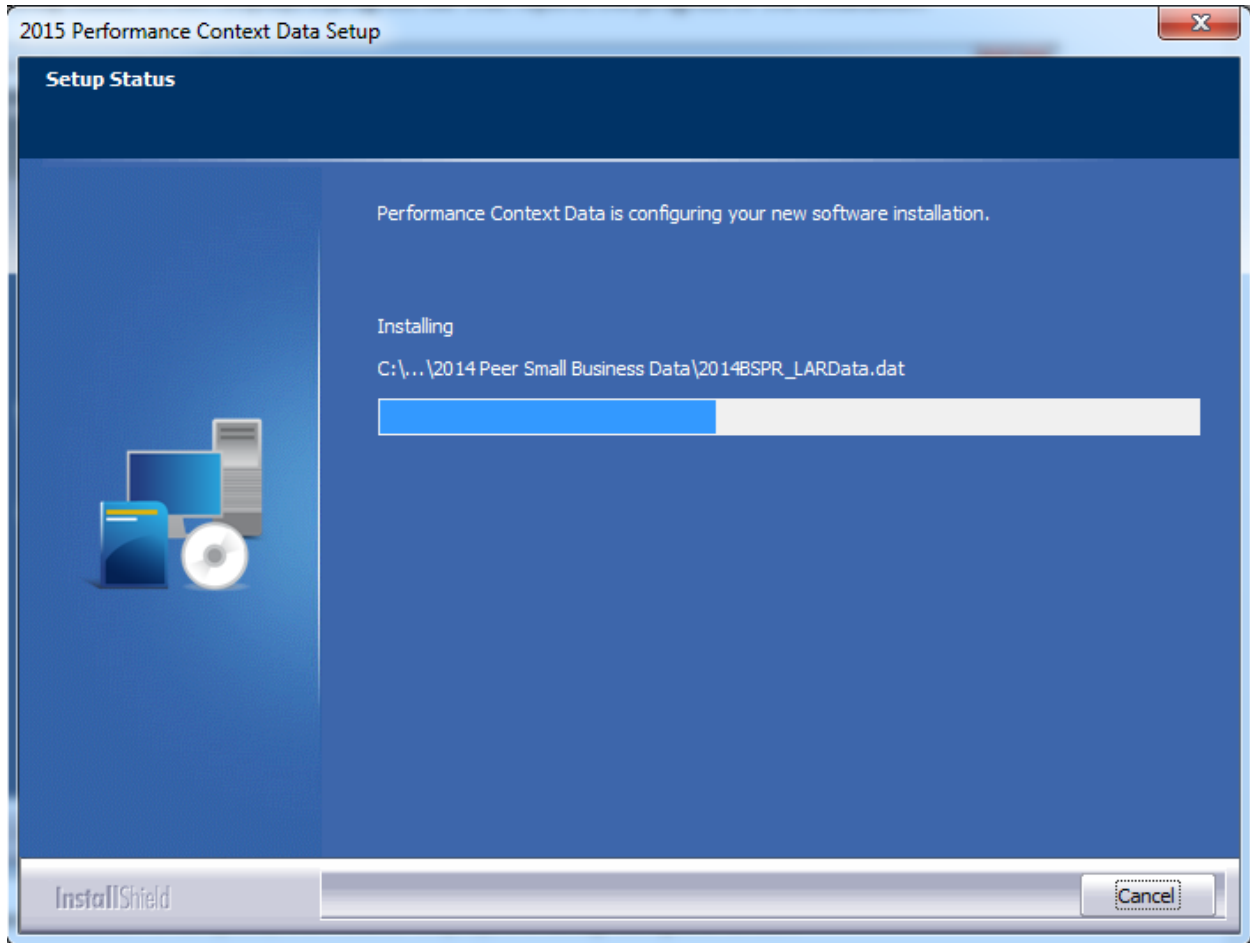
To begin installing the data sets, click the **Install** button:



The installer displays the **Setup Status** screen.

## Setup Status Screen

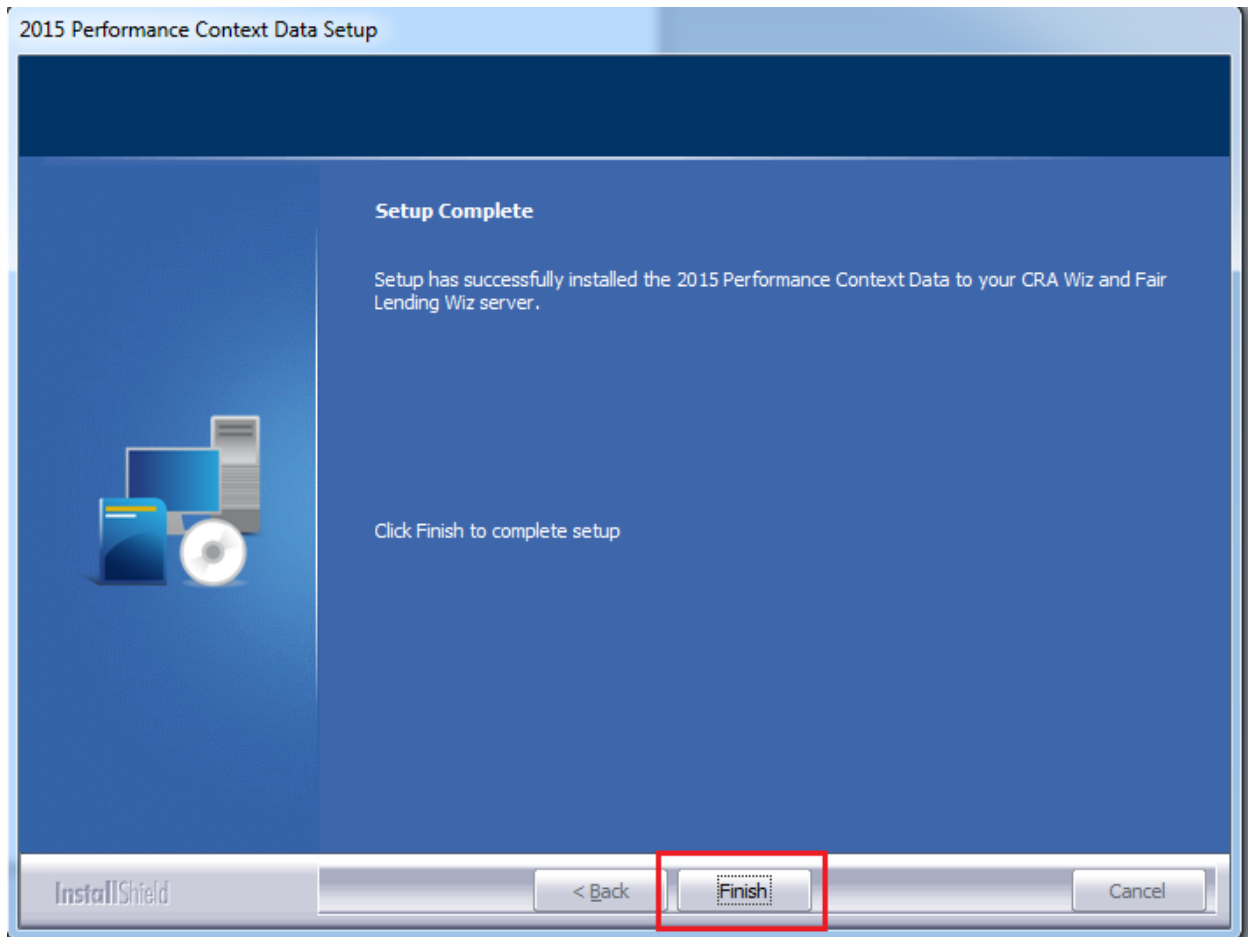
The **Setup Status** screen displays a progress bar that reports the progress of the installation:



When installation is complete, the installer displays the **Setup Complete** screen.

## Setup Complete Screen

Click the **Finish** button:



Installation is complete.

**About Wolters Kluwer Financial Services** - Wolters Kluwer Financial Services provides audit, risk and compliance solutions that help financial organizations improve efficiency and effectiveness across their enterprise. Whether complying with regulatory requirements, addressing a single key risk, or working toward a holistic risk management strategy, more than 15,000 customers worldwide count on Wolters Kluwer Financial Services for a comprehensive and dynamic view of risk management and compliance. With more than 30 offices in over 20 countries, the company's prominent brands include: FRSGlobal, ARC Logics for Financial Services, PCi, Bankers Systems, VMP® Mortgage Solutions, AppOne®, GainsKeeper®, Capital Changes, NILS, AuthenticWeb™ and Uniform Forms™. Wolters Kluwer Financial Services is part of Wolters Kluwer, a leading global information services and publishing company with annual revenues of (2011) €3.4 billion (\$4.7 billion) and approximately 19,000 employees worldwide. Please visit our website for more information.

**Wolters Kluwer Financial Services**  
130 Turner Street  
Building 3, 4th Floor  
Waltham, MA 02453  
800.261.3111

© 2016 Wolters Kluwer Financial Services