



Consumer Compliance Solutions

CRA *Wiz* and Fair Lending *Wiz* 7.1: 2016 Distressed and Underserved Nonmetropolitan Middle-Income Geographies

Release Notes and Installation Instructions

Release Date: July 2016

Table of Contents

Overview	3
Data Source	3
Who should install	3
Prerequisites	3
Required permissions	3
Required free space	3
Approximate install time.....	3
Confirming Installation.....	3
Download and Installation Instructions	4
Assigning Areas to File	11

Overview

On June 17th, 2016, the FFIEC posted the **List of Distressed and Underserved Nonmetropolitan Middle-Income Geographies** for 2015. The 2016 list includes 3,969 census tracts. The FFIEC posted additional information regarding their sources and methodology [here](#).

Data Source

FFIEC

Who should install

Clients that undergo CRA examinations can use this file to aid their analysis. Any bank revitalization or stabilization activities in any one of these Census Tracts will receive Community Reinvestment Act (CRA) consideration as “community development.”

Prerequisites

CRA *Wiz* and Fair Lending *Wiz* 7.x

Required permissions

Installation takes place within the CRA *Wiz* and Fair Lending *Wiz* application

Required free space

Negligible

Approximate install time

5 minutes

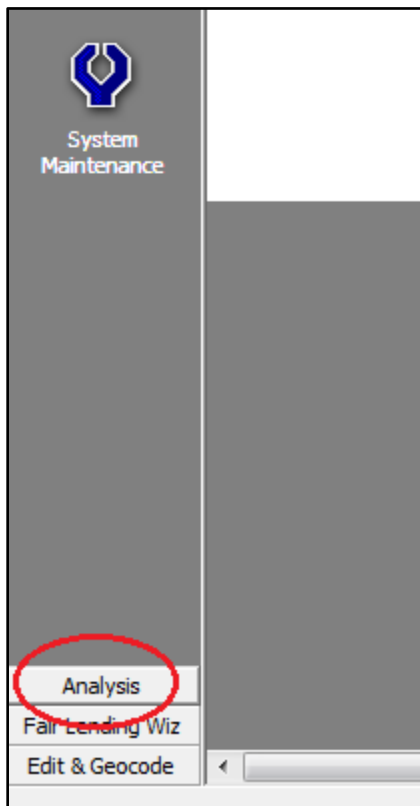
Confirming Installation

Go to **Analysis > Create Areas**. Under **Options**, click **Set 2010 Census Boundaries**. After this, you will see an area named "FFIECDistressList06212016" in your **Saved Areas** folder.

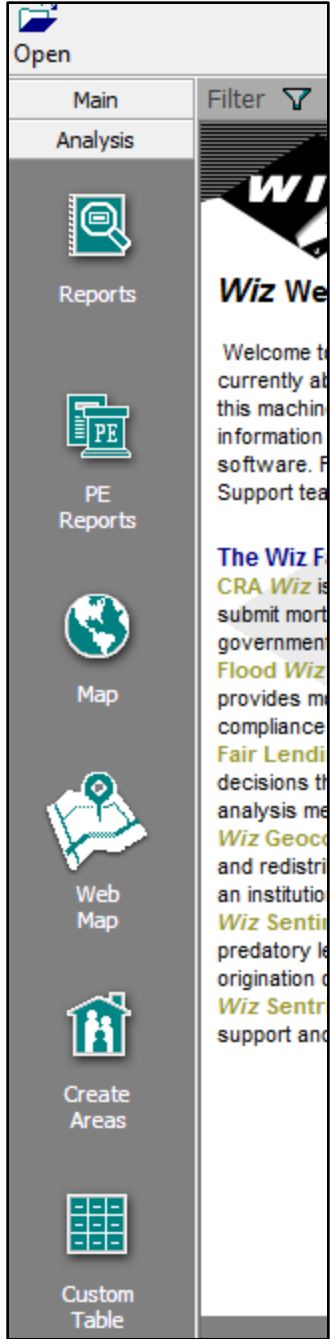
Download and Installation Instructions

To download and then install the 2016 Distressed and Underserved Geographies assessment area into CRA *Wiz* and Fair Lending *Wiz*, follow these steps:

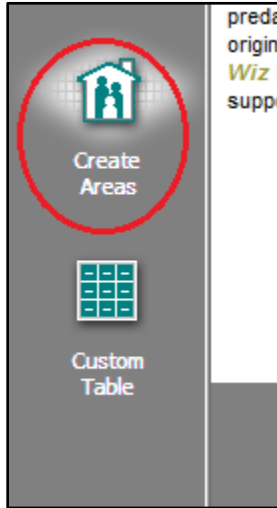
1. Download the **FFIECDistressedList2016.mdb** assessment area file using this link.
2. Save the area to a local hard drive.
3. Launch **CRA *Wiz* and Fair Lending *Wiz***.
4. In the left-side toolbar, click the **Analysis** tool bar button:



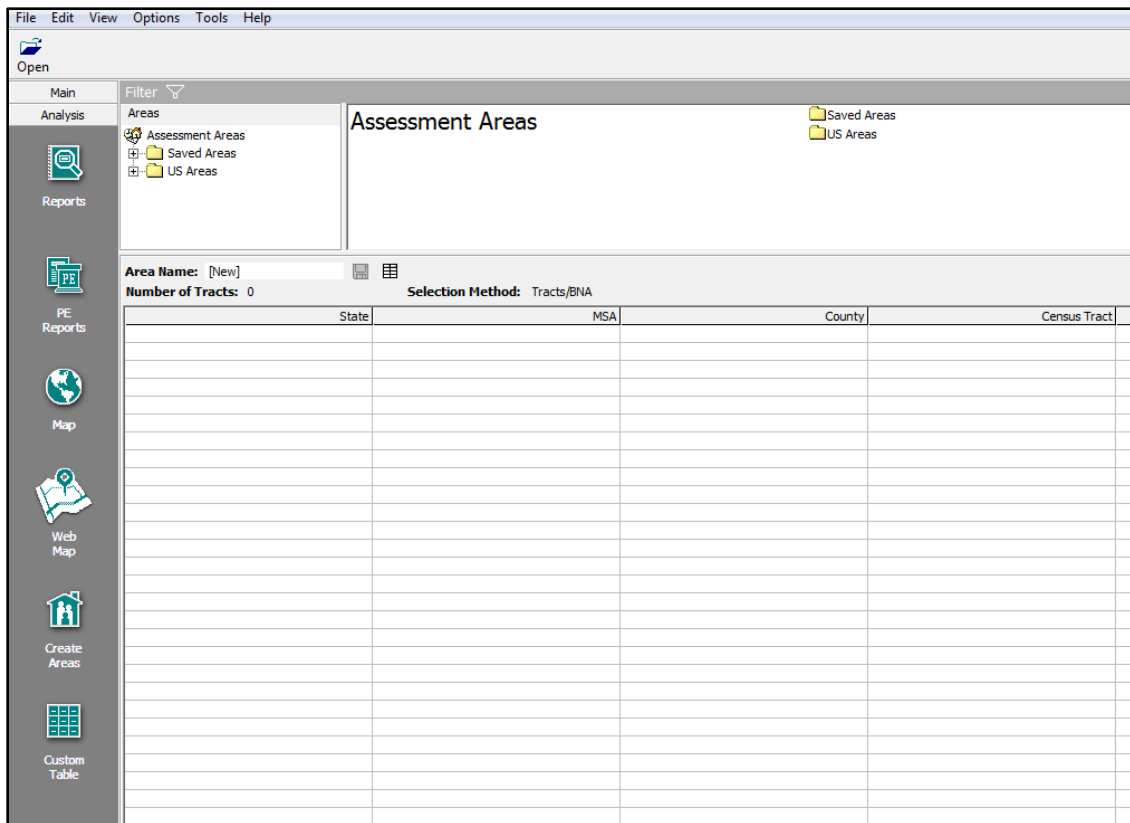
The software displays Analysis tool bar options:



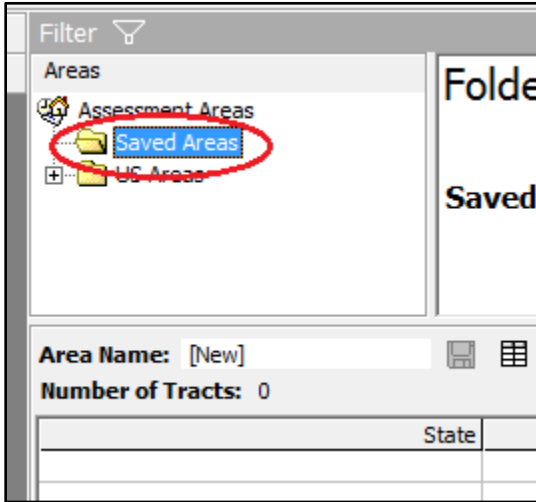
5. Click the **Create Areas** button:



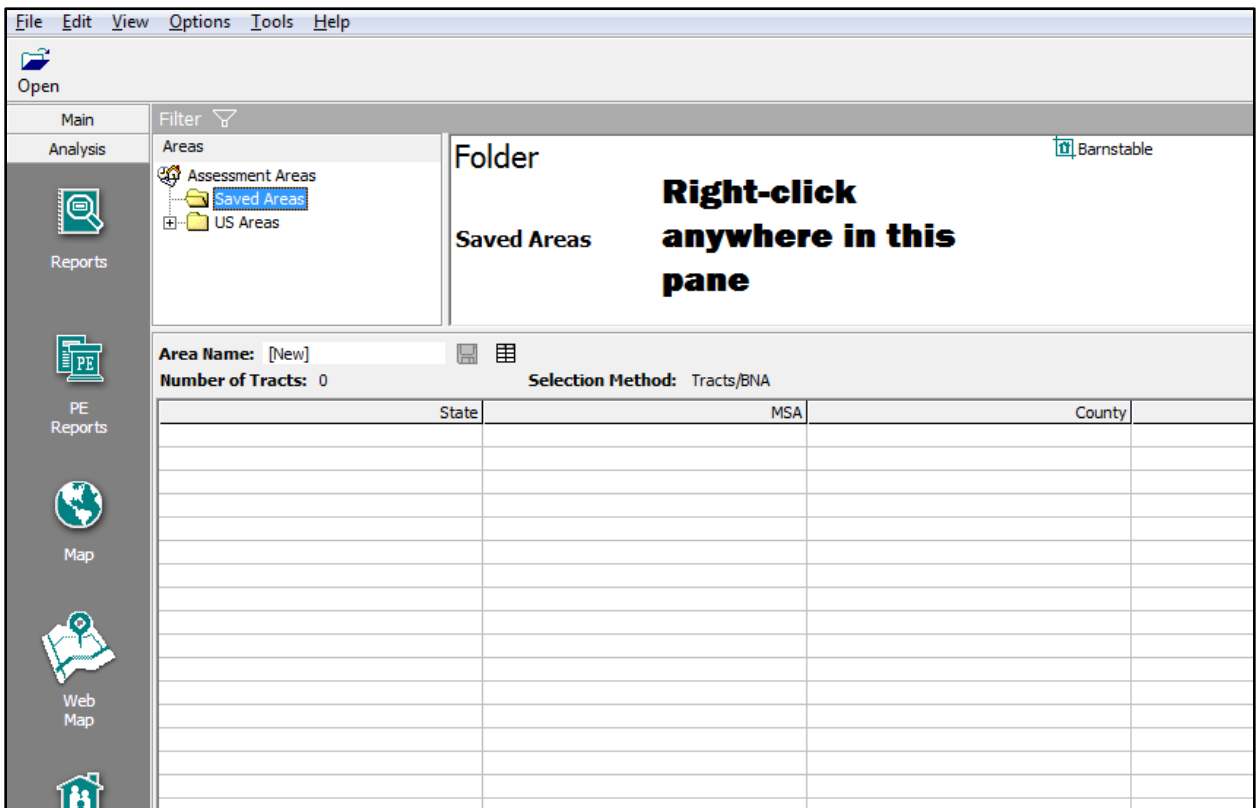
The software displays the **Create Areas** screen:



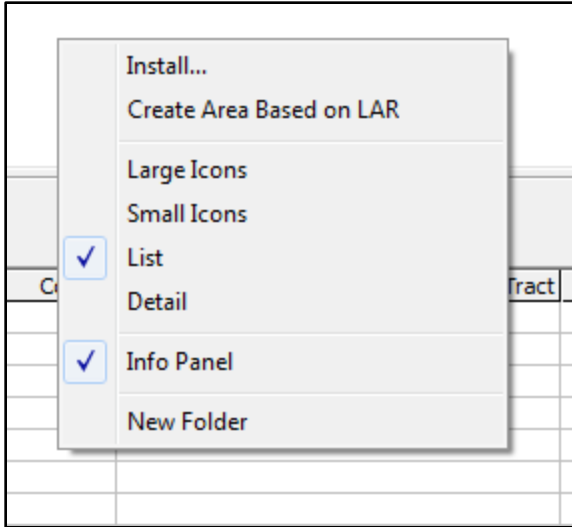
- Click the **Saved Areas** folder to open it:



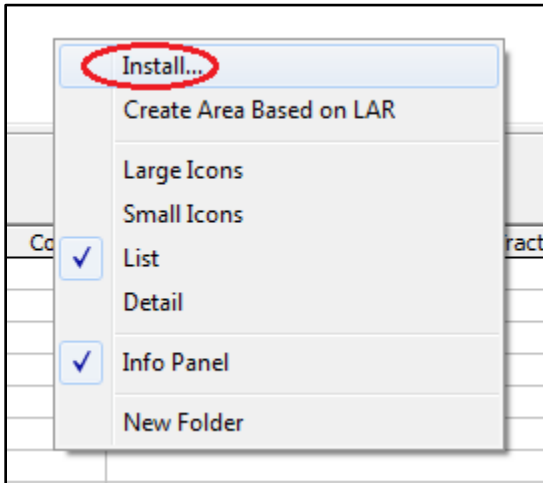
- Right-click in the right-hand list pane:



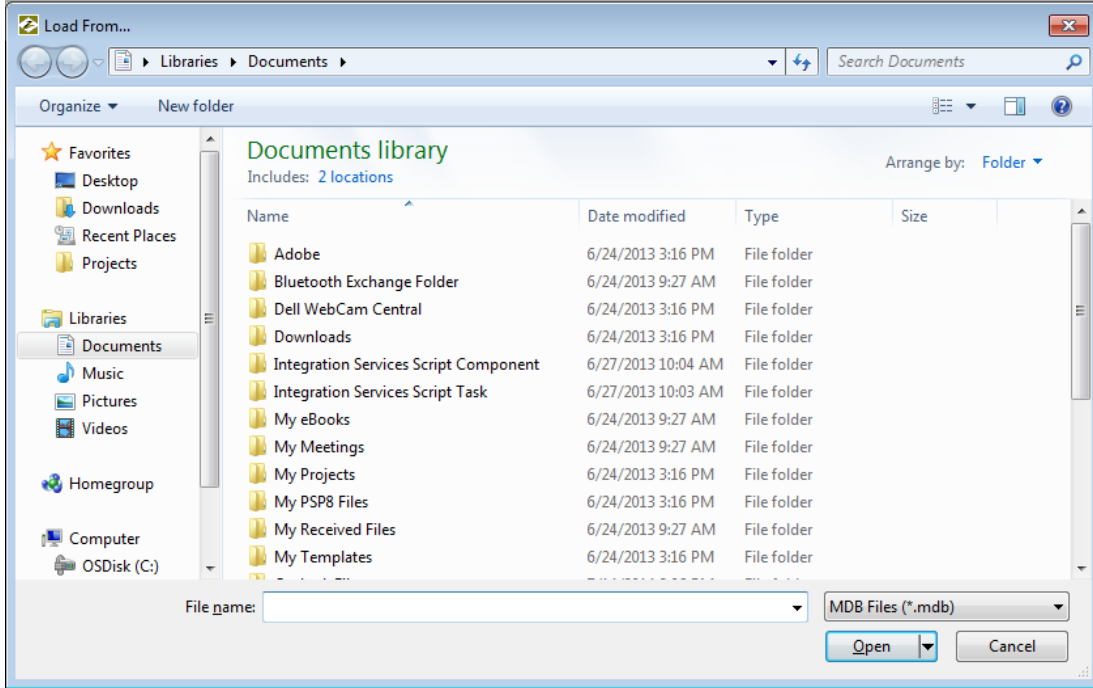
The software displays a contextual menu:



8. Select the **Install ...** option:

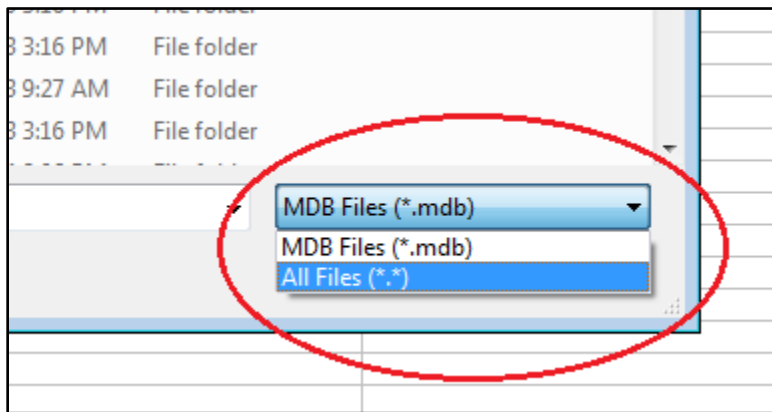


The software displays the **Load From...** dialog box:

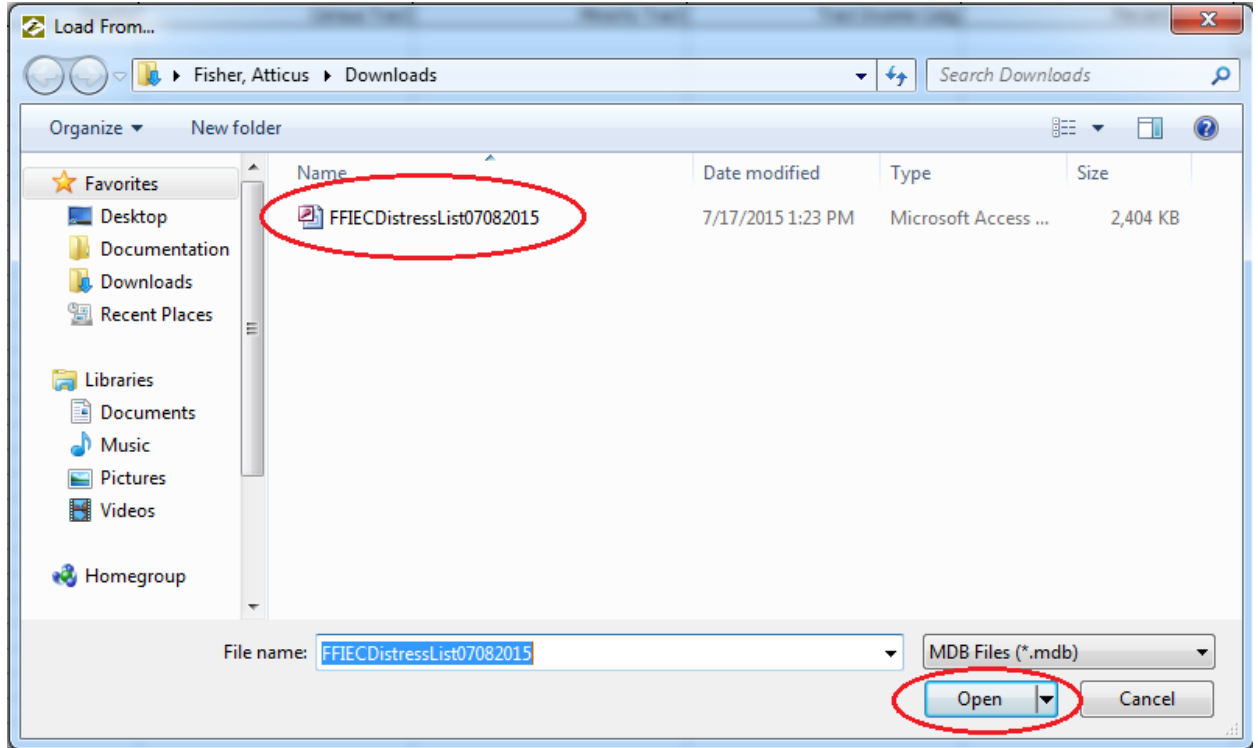


9. Use the dialog box controls to navigate to the location where you saved the **FFIECDistressedList2016.mdb** file.

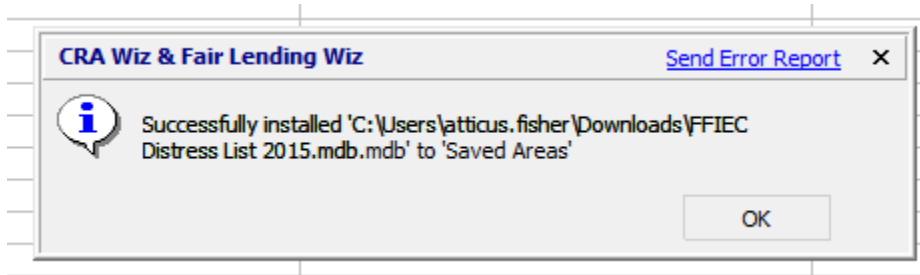
Note: If the file is not listed, change file type drop-down menu from **MDB files (*.mdb)** to **All Files (*.*)**:



10. When you have located the file, select it, and then click the **Open** button:



The software installs the **FFIEC Distress List** area into your Saved Areas folder and then displays a confirmation message:



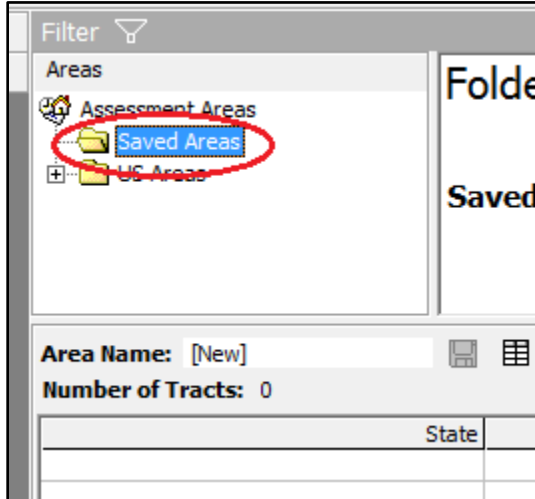
11. Click the **OK** button to continue.

Note: For information on how to assign the saved area to a file, refer to the following section, [Assigning Areas to File](#).

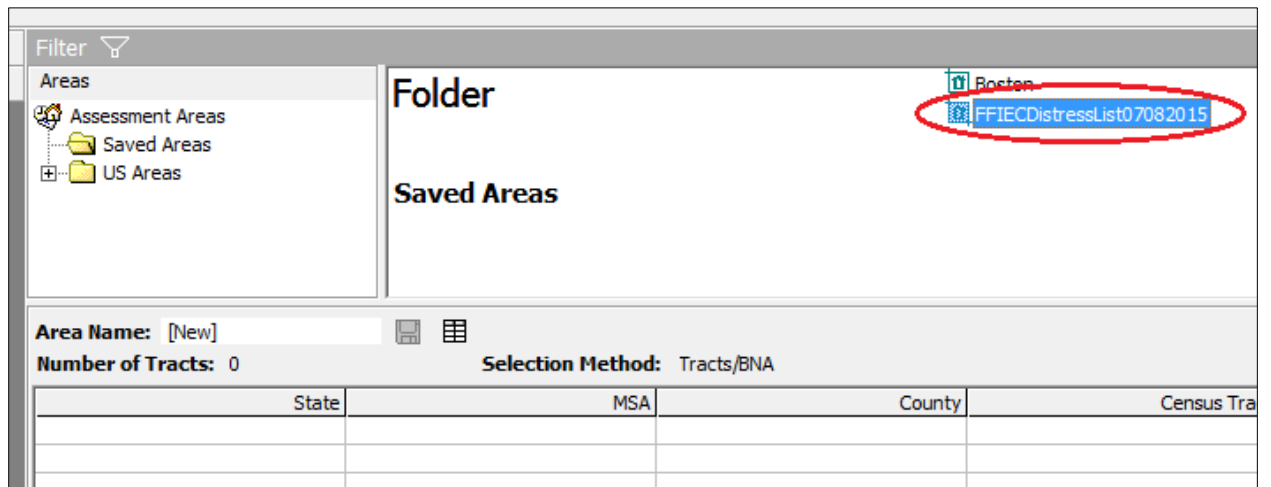
Assigning Areas to File

To assign the saved FFIEC Distress List to a file, follow these steps:

1. Click the **Saved Areas** folder to open it:

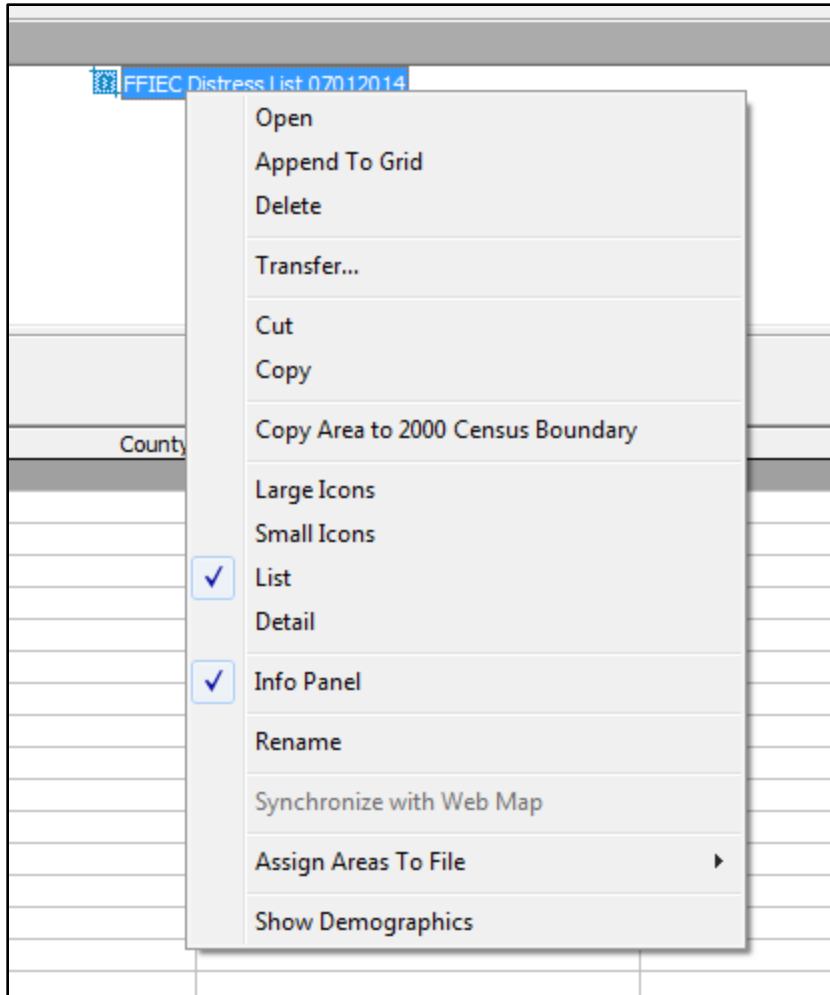


The software displays the saved FFIEC area in the right-hand list pane:

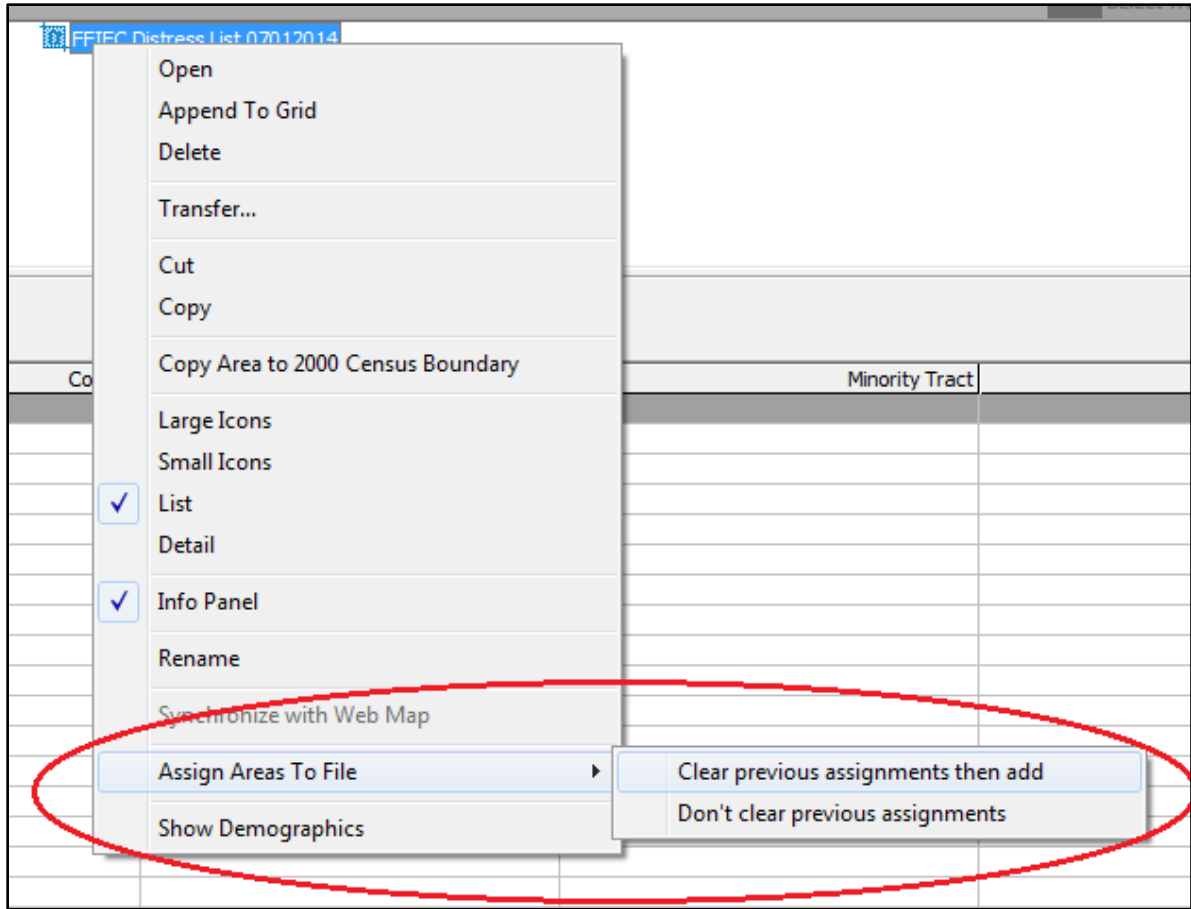


2. Select the area and click your right mouse button.

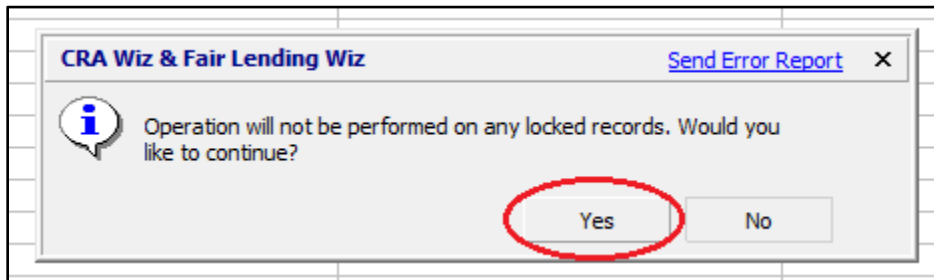
The software displays a contextual menu:



3. Select **Assign Areas to File** > **Clear previous assignments** then add:

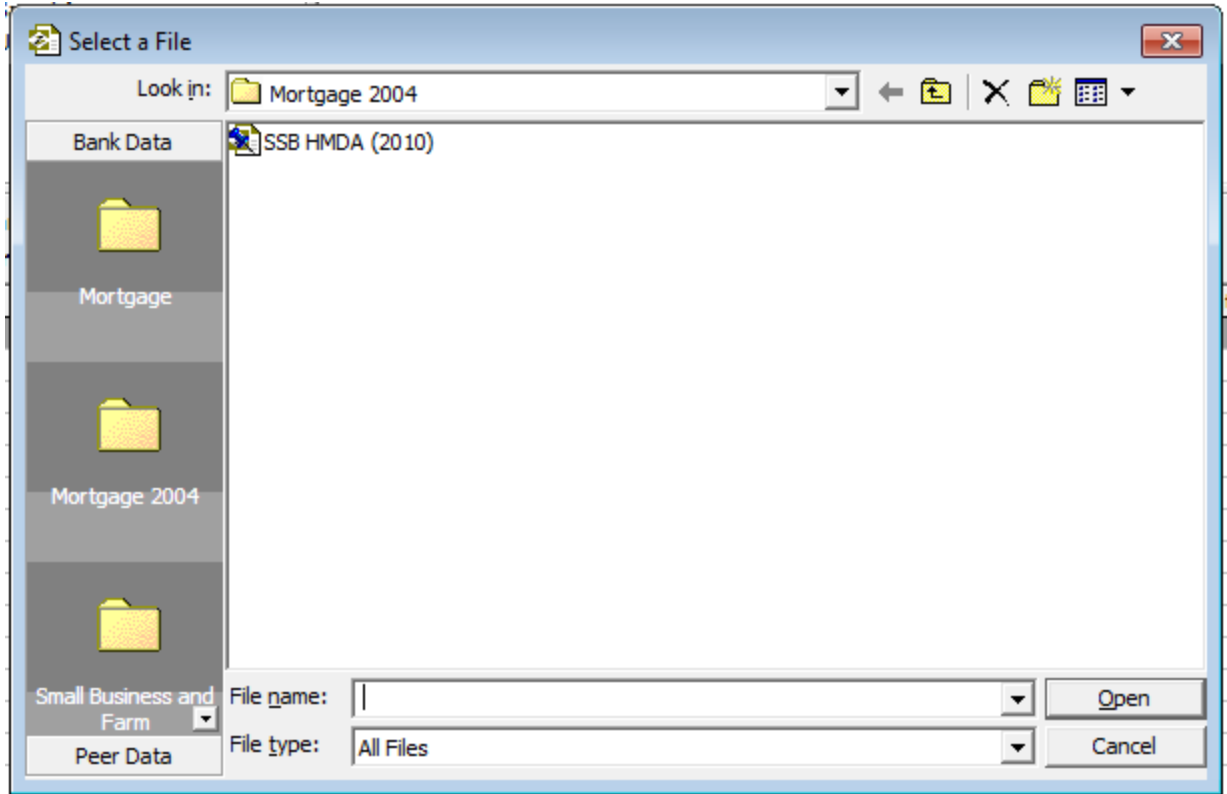


The software displays a confirmation message:

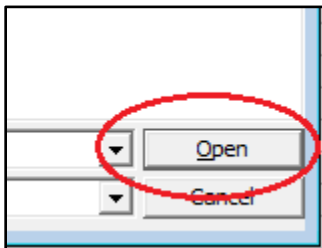


4. Click the **Yes** button to continue.

The software displays the **Select a File** dialog box:



5. Use the dialog box controls to navigate to then select the file to which you want to assign the FFIEC area, then click the **Open** button:



The software assigns the FFIEC area to the selected file.

Note: The software populates the **Assessment** field of the LAR with a value if the record is in this FFIEC Distress List. You can then filter on this field (**Assessment>"00"**) to generate a list of affected records (accessed via the **Edit** screen). Or you can create a **Report showing count-or-amount** of activities within the List.

Additionally, you can execute the **Copied With Filter** command using the **FFIEC Distress List** area as the filter. The resulting file can be mapped or used as the current file for reporting.

About Wolters Kluwer Financial Services - Wolters Kluwer Financial Services provides audit, risk and compliance solutions that help financial organizations improve efficiency and effectiveness across their enterprise. Whether complying with regulatory requirements, addressing a single key risk, or working toward a holistic risk management strategy, more than 15,000 customers worldwide count on Wolters Kluwer Financial Services for a comprehensive and dynamic view of risk management and compliance. With more than 30 offices in over 20 countries, the company's prominent brands include: FRSGlobal, ARC Logics for Financial Services, PCi, Bankers Systems, VMP® Mortgage Solutions, AppOne®, GainsKeeper®, Capital Changes, NILS, AuthenticWeb™ and Uniform Forms™. Wolters Kluwer Financial Services is part of Wolters Kluwer, a leading global information services and publishing company with annual revenues of (2011) €3.4 billion (\$4.7 billion) and approximately 19,000 employees worldwide. Please visit our website for more information.

Wolters Kluwer Financial Services
130 Turner Street
Building 3, 4th Floor
Waltham, MA 02453
800.261.3111

© 2015 Wolters Kluwer Financial Services