

Installation Instructions and
Release Notes

October 2021

Governance, Risk & Compliance

CRA *Wiz* and Fair Lending *Wiz*: 2021 Business Demographic Data

Content

1	Overview	3
1.1	Data Source	3
1.2	Who Should Install	3
1.3	Prerequisites	3
1.4	Required permissions	3
1.5	Required free space	3
1.6	Approximate install time	3
2	Installation Instructions	4
2.1	Welcome Screen	4
2.2	SQL Server Login Screen	5
2.3	Ready to Install Screen	7
2.4	Setup Status Screen	8
2.5	Setup Complete Screen	9
3	Confirming Installation	10

1 Overview

This update provides the latest business demographic data for use in performance context analysis of small business lending.

Note: The calculations and field descriptions in September 2021 have been adjusted to add consistency to all the values. The top of the ranges will now be inclusive of the number in the description, for example: **.5 - 1 Million will be >.5 and <= 1 Million**. A future release will update the **reports** in **Create Areas** with the adjustment to field descriptions.

1.1 Data Source

Dun and Bradstreet

1.2 Who Should Install

Any client licensed for Business Demographic Data should install this update. To determine if you are licensed for Business Demographic Data, go to the **System Maintenance** screen and select **License and Access Management**.

1.3 Prerequisites

CRA *Wiz* and Fair Lending *Wiz* 7.5 is required to install this update. To check your CRA *Wiz* and Fair Lending *Wiz* version, go to the program menu bar and select **Help > About CRA *Wiz***. Build numbers starting with "75" are acceptable.

1.4 Required permissions

This update is installed as a single table on your SQL server, so both Windows read/write permissions and SQL Server table creation permissions are required. Wolters Kluwer Financial Services recommends that the user running the install have both Windows admin and SQL Server admin login credentials.

1.5 Required free space

Approximately 1MB (megabyte)

1.6 Approximate install time

Less than 1 minute (approximately 40 seconds)

2 Installation Instructions

To install 2021 Business Demographic Data, follow these steps:

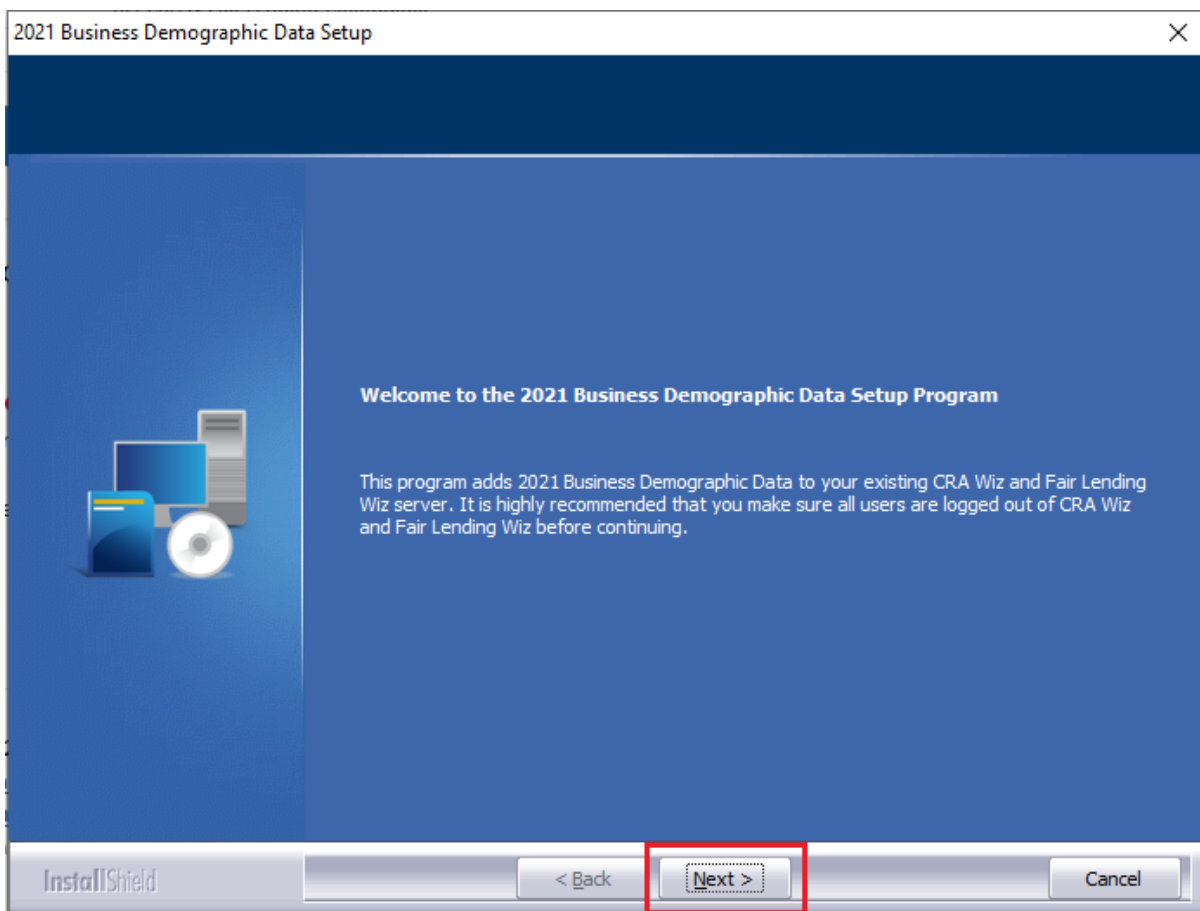
1. After downloading the update locally to your SQL Server, locate and double-click the **2021BusinessDemographicData** installation file.

The installer displays the **Welcome** screen.

2. Follow the directions for each of the following screens.

2.1 Welcome Screen

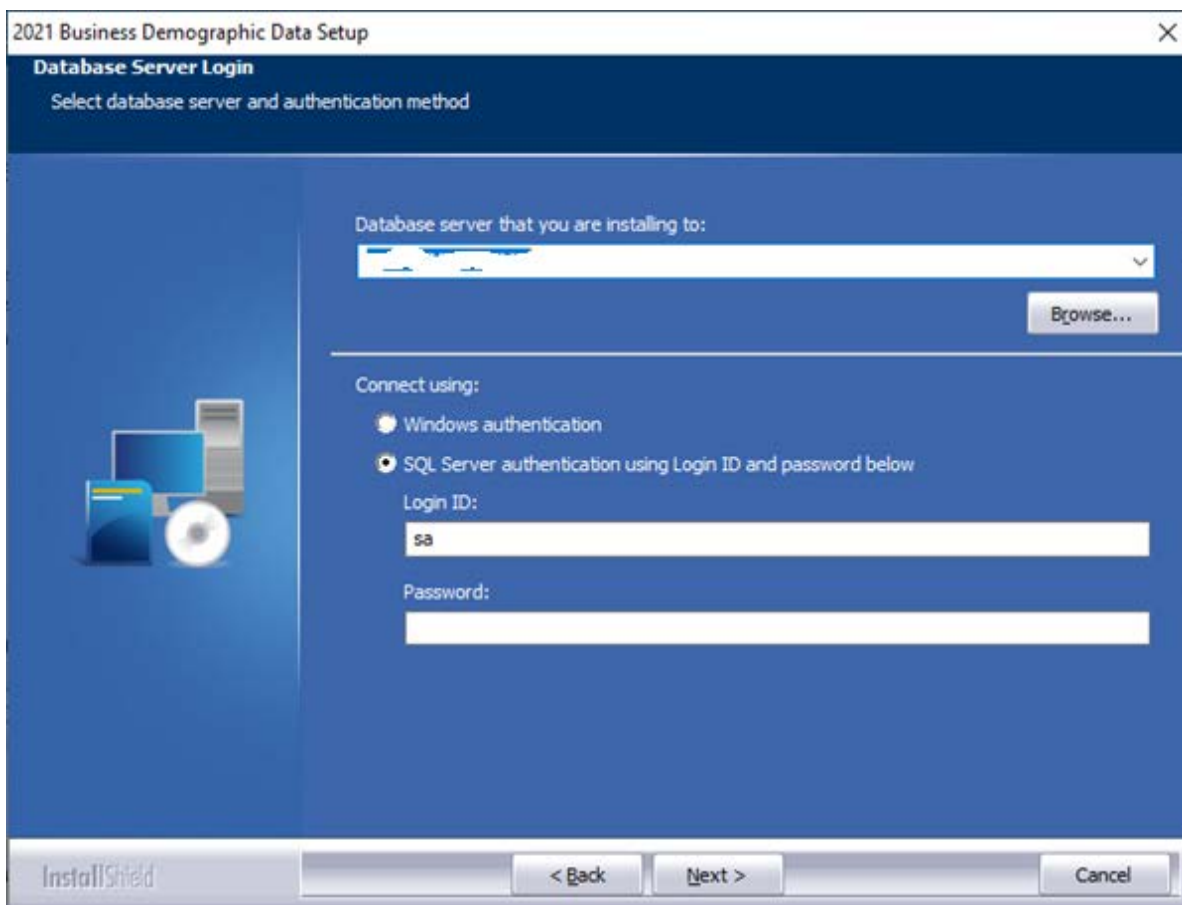
Click the **Next** button:



The software displays the **SQL Server Login** screen.

2.2 SQL Server Login Screen

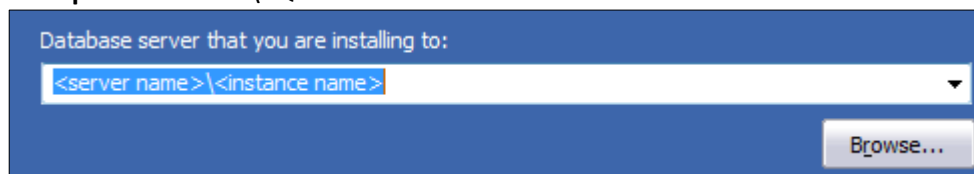
Use this screen to enter the name of the **SQL Server** and to configure authentication options:



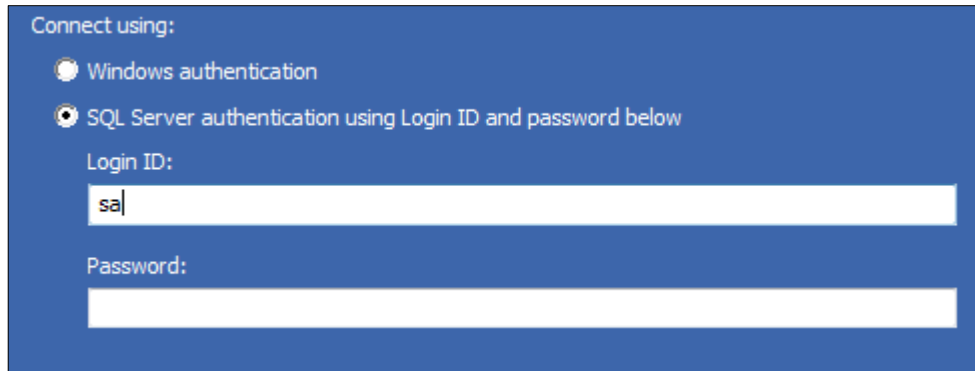
Note: The software displays the Database Server Login screen only if the computer on which you are installing the update is running **SQL Server**. If the installer does not detect SQL Server on your computer, the installer displays the screen.

1. In the **Database server that you are installing to:** field, enter the **SQL Server name and instance** to which you are installing the data as shown below:

Example: SVRBOS01\SQLEXPRESS



2. Choose one of the following authentication options:
 - Windows Authentication
 - SQL Server Authentication using Login ID and password below - If you select this option, you must also enter your SQL Server account Login ID (user name) and Password in the **Login ID** and **Password** fields.



Connect using:

Windows authentication

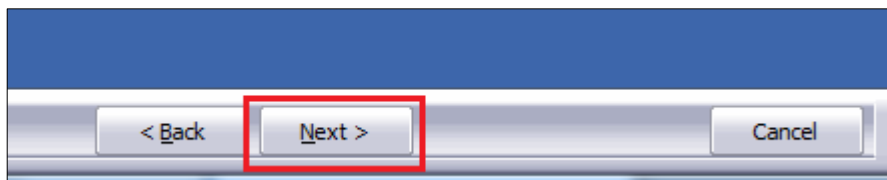
SQL Server authentication using Login ID and password below

Login ID:

sa

Password:

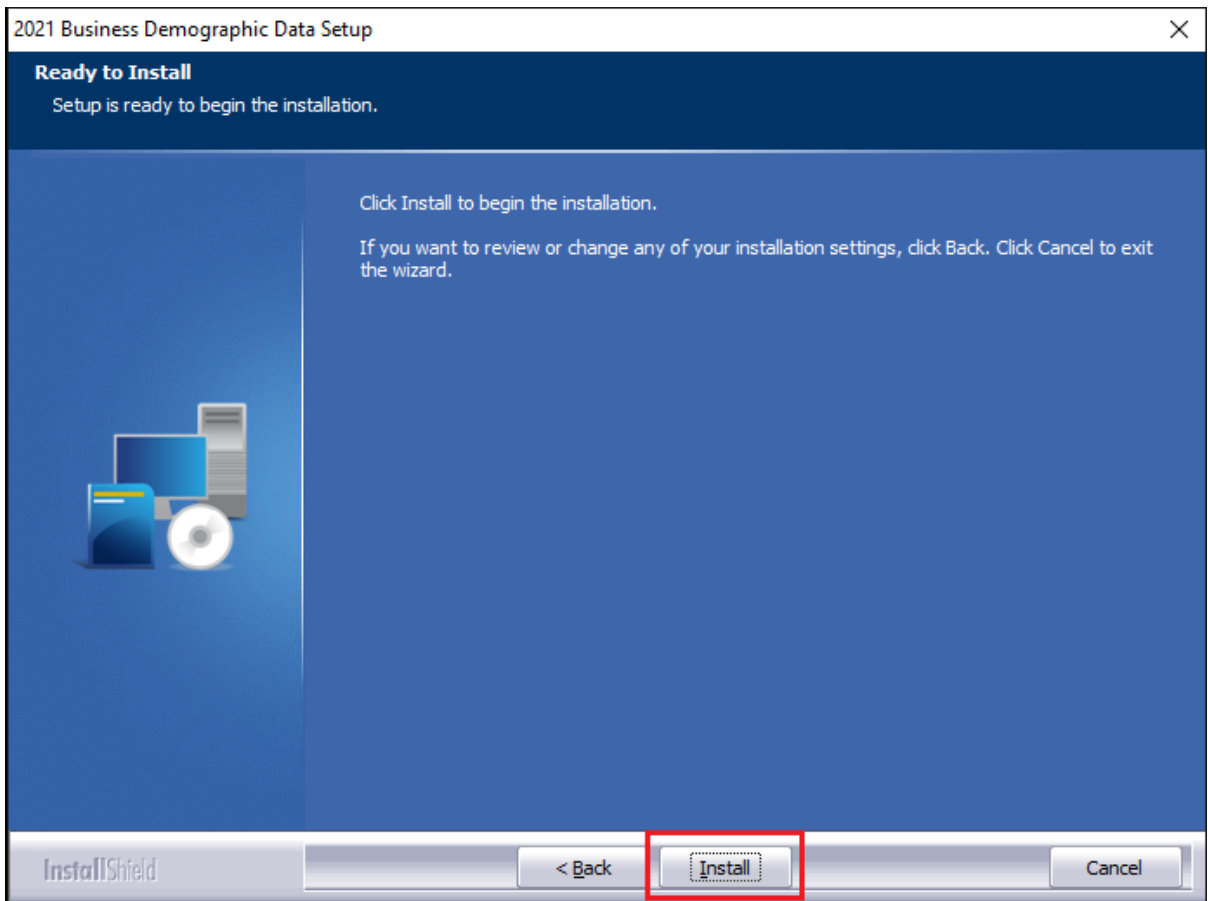
3. Click the **Next** button:



The software displays the **Ready to Install the Program** screen.

2.3 Ready to Install Screen

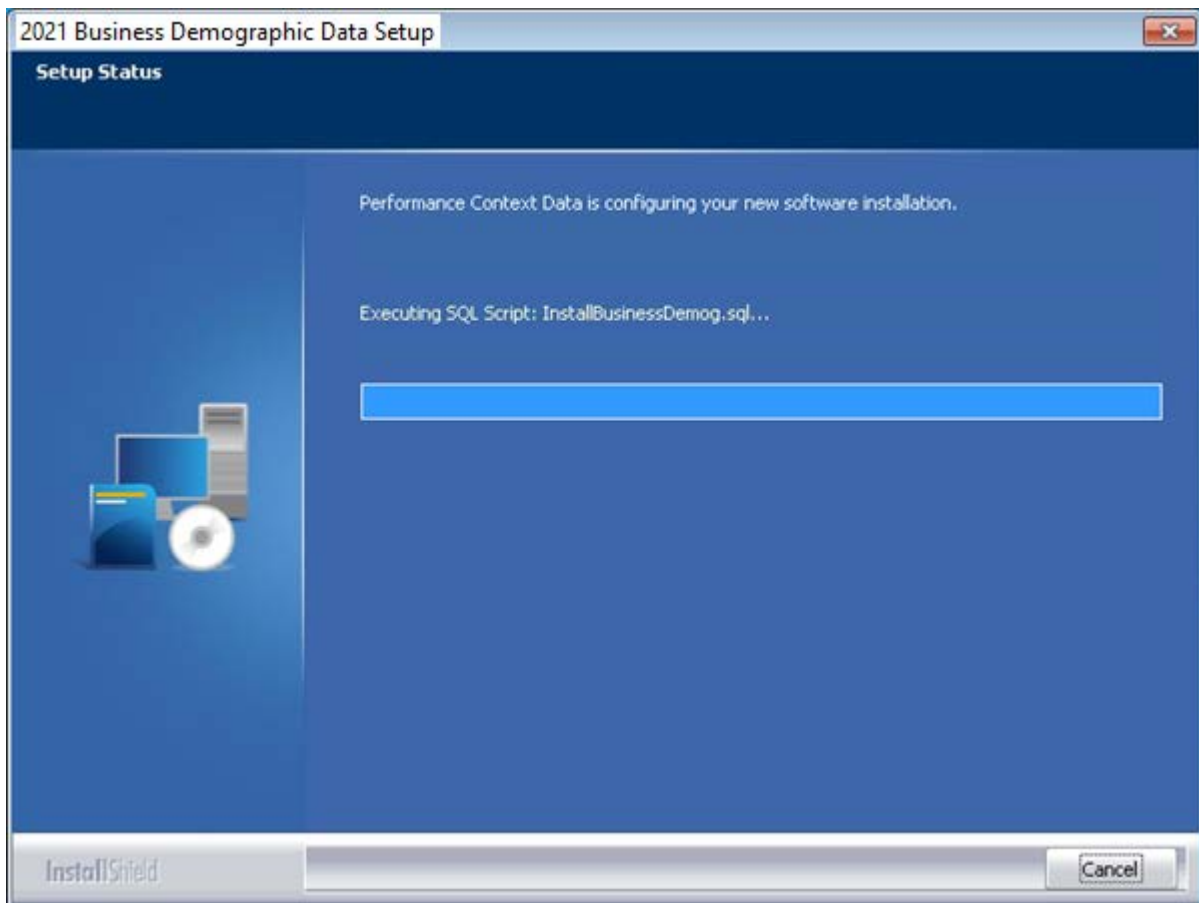
To begin installing the data sets, click the **Install** button:



The installer displays the **Setup Status** screen.

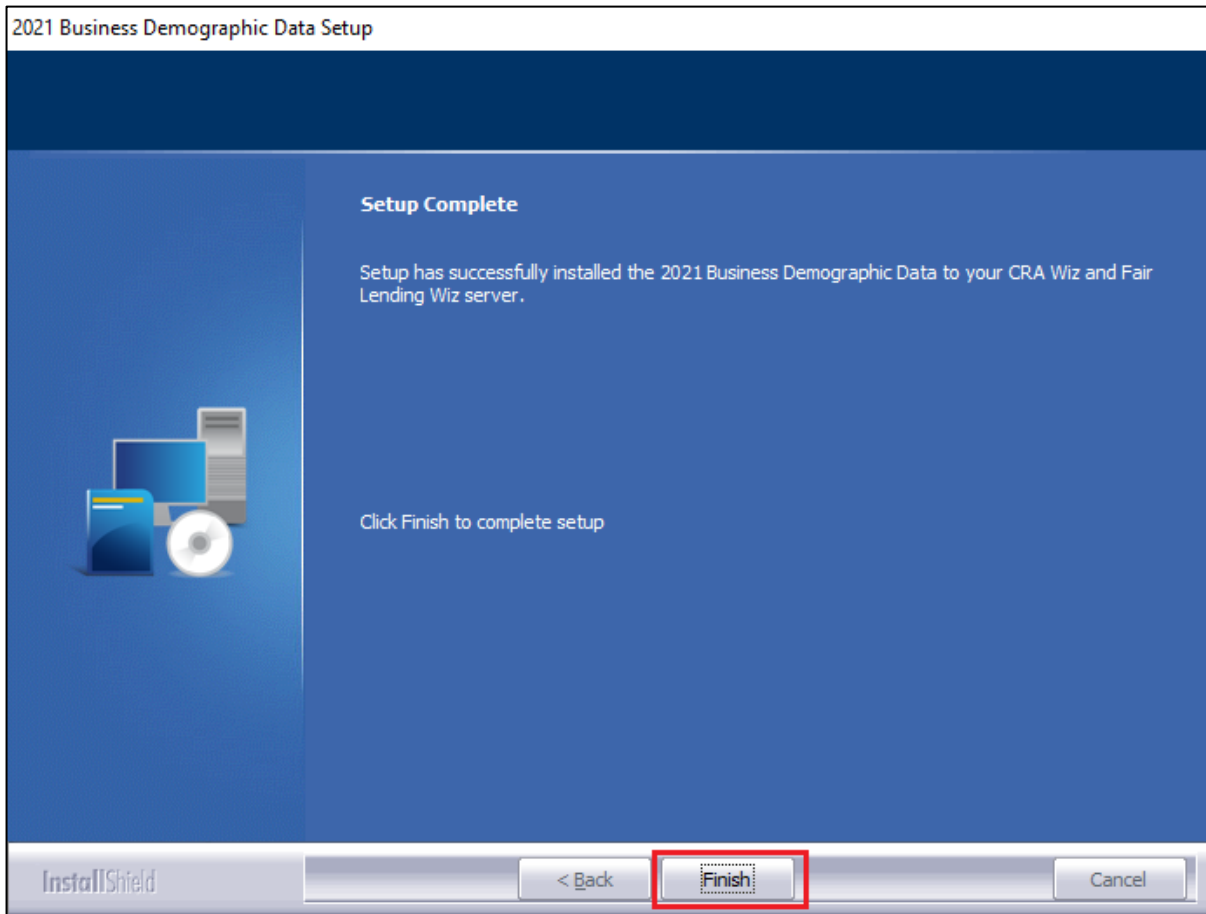
2.4 Setup Status Screen

The **Setup Status** screen displays a progress bar that reports the progress of the installation:



2.5 Setup Complete Screen

Click the **Finish** button:



Installation is complete.

3 Confirming Installation

Once the installation is complete, you can verify the installation by selecting the **Create Areas** option in the CRA *Wiz* and Fair Lending *Wiz* sidebar. You will also need to set Census boundaries to **2010**, located in the **Options** menu bar item.

In **Create Areas**, right-click on a demographic area and choose **Show Demographics**. The software displays the **Demographic Information (Year 20XX)** screen in a new window. Then choose **2021** from the **Year** dropdown (**1**):

Business	Total	Sales<=1 Mil	Sales>1 Mil	Women/Minority	Count
Farm	179	175	2	Women Owned	353
Non Farm	6,400	5,082	343	Minority Owned	78
Total	6,579	5,257	345		

Employee Size	Count	Other Data	Count	Veteran-Owned	Count
1-4	3,864	Headquarters	107	All Veteran	68
5-9	1,806	Branches	926	Vietnam Veteran	3
10-19	394	Single Locations	5,546	SICs	Count
20-49	287	NA	0	Agriculture	179
50+	206	Subsidiaries	30	Mining	2
NA	22	Proprietorship	1,119	Construction	436
		Partnership	191	Manufacturing	228
Sales Volume	Count	Corporation	1,493	Transportation	328
<0.5 Mil	5,015	NA	3,776	Wholesale Trade	202
0.5-0.9 Mil	242	Property Owned	5,995	Retail Trade	1,078
1-24 Mil	320	Property Rented	336	Finance, Insurance	438
25-49 Mil	14	NA	248	Services	2,541
50+	11			Public Admin.	146
NA	977			Nonclassifiable	1,001

In the sidebar on the left side of the window, click the **Business Demog** slider button (**2**), then click the **Business Demog** button (**3**), and you should see data to the right as shown above (**4**). If the software displays zeroes (0s), the install was **not** completed successfully.

Note: The CRA *Wiz* and Fair Lending *Wiz* build number (as found in **Help > About CRA Wiz**) is **not** updated by the 2021 Business Demographic Data installer.

About Wolters Kluwer: Wolters Kluwer provides audit, risk and compliance solutions that help financial organizations improve efficiency and effectiveness across their enterprise. Whether complying with regulatory requirements, addressing a single key risk, or working toward a holistic risk management strategy, more than 15,000 customers worldwide count on Wolters Kluwer for a comprehensive and dynamic view of risk management and compliance. With more than 30 offices in over 20 countries, the company's prominent brands include: FRSGlobal, ARC Logics for Financial Services, PCI, Bankers Systems, VMP® Mortgage Solutions, AppOne®, GainsKeeper®, Capital Changes, NILS, AuthenticWeb™ and Uniform Forms™. Wolters Kluwer is a leading global information services and publishing company with annual revenues of (2011) €3.4 billion (\$4.7 billion) and approximately 19,000 employees worldwide. Please visit our website for more information.

Confidentiality Notice: This document contains privileged information that is intended for the addressee only. If you are not an intended recipient of the original sender (or responsible for delivering the message to such person), you are hereby notified that any review, disclosure, copying, distribution or the taking of any action in reliance of the contents of and links to attachments in the document is strictly prohibited. If you have received this in error, please immediately notify the sender and permanently delete any copies of this document (digital or paper) in your possession.

Wolters Kluwer

230 3rd Ave.
Waltham, MA
02453
800.261.3111