



Consumer Compliance Solutions

CRA *Wiz* and Fair Lending *Wiz*: 2017 Business Demographic Data

Release Notes and Installation Instructions

Release Date: September 2017

Table of Contents

Overview	3
Data Source	3
Who Should Install	3
Prerequisites	3
Required permissions	3
Required free space	3
Approximate install time.....	3
Installation Instructions	4
Welcome Screen	4
SQL Server Login Screen.....	5
Ready to Install Screen.....	7
Setup Status Screen	8
Setup Complete Screen.....	9
Confirming Installation.....	10

Overview

This update provides the latest business demographic data for use in performance context analysis of small business lending.

Data Source

Dun and Bradstreet

Who Should Install

Any client licensed for Business Demographic Data should install this update. To determine if you are licensed for Business Demographic Data, go to the **System Maintenance** screen and select **License and Access Management**.

Prerequisites

CRA Wiz and Fair Lending Wiz 7.2 is required to install this update. To check your CRA Wiz and Fair Lending Wiz version, go to the program menu bar and select **Help > About CRA Wiz**. Build numbers starting with "72" are acceptable.

Required permissions

This update is installed as a single table on your SQL server, so both Windows read/write permissions and SQL Server table creation permissions are required. Wolters Kluwer Financial Services recommends that the user running the install have both Windows admin and SQL Server admin login credentials.

Required free space

Approximately 1 GB

Approximate install time

5 to 10 minutes

Installation Instructions

To install 2017 Business Demographic Data, follow these steps:

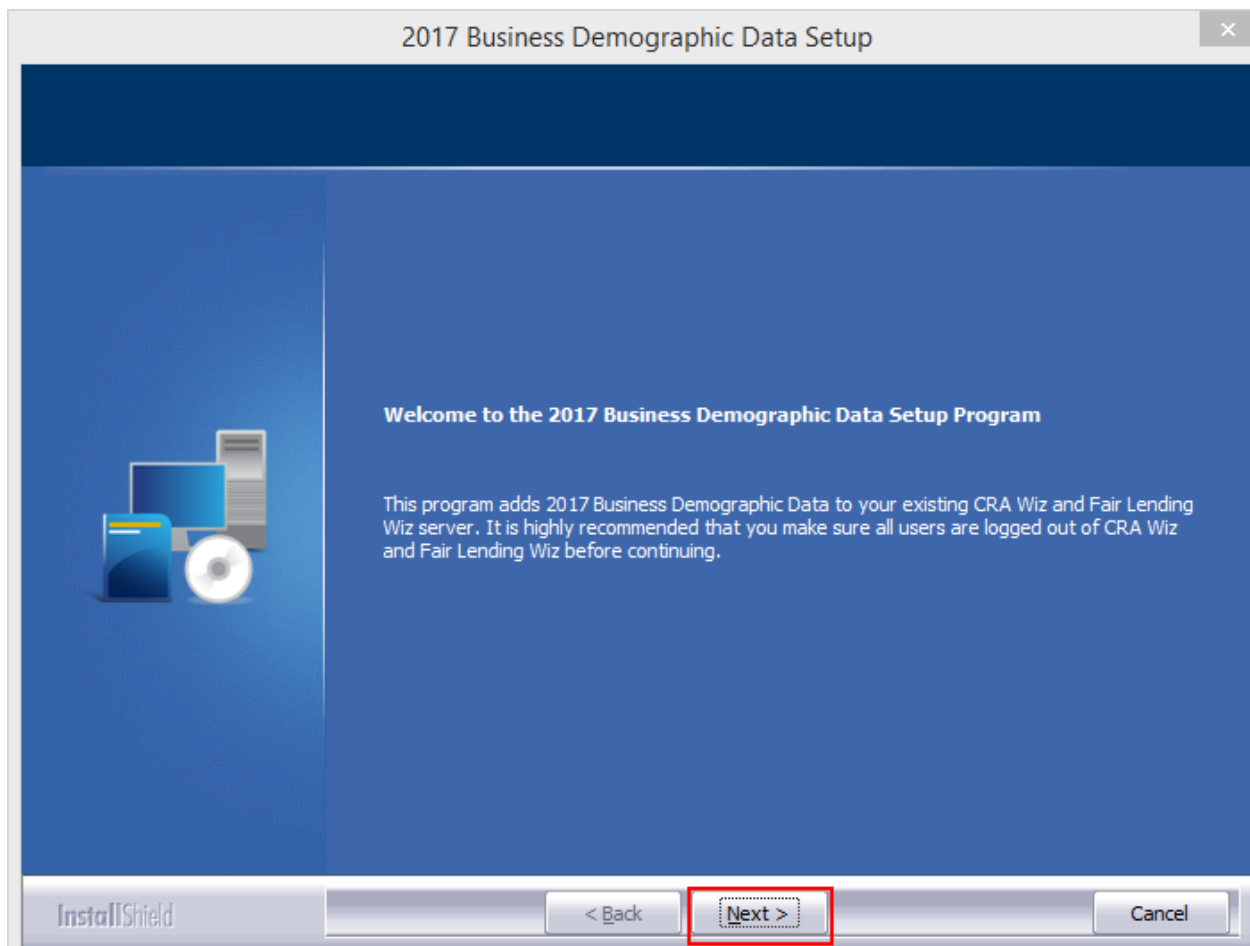
1. After downloading the update locally to your SQL Server, locate and double-click the **2017BusinessDemographicData** installation file.

The installer displays the **Welcome** screen.

2. Follow the directions for each of the following screens.

Welcome Screen

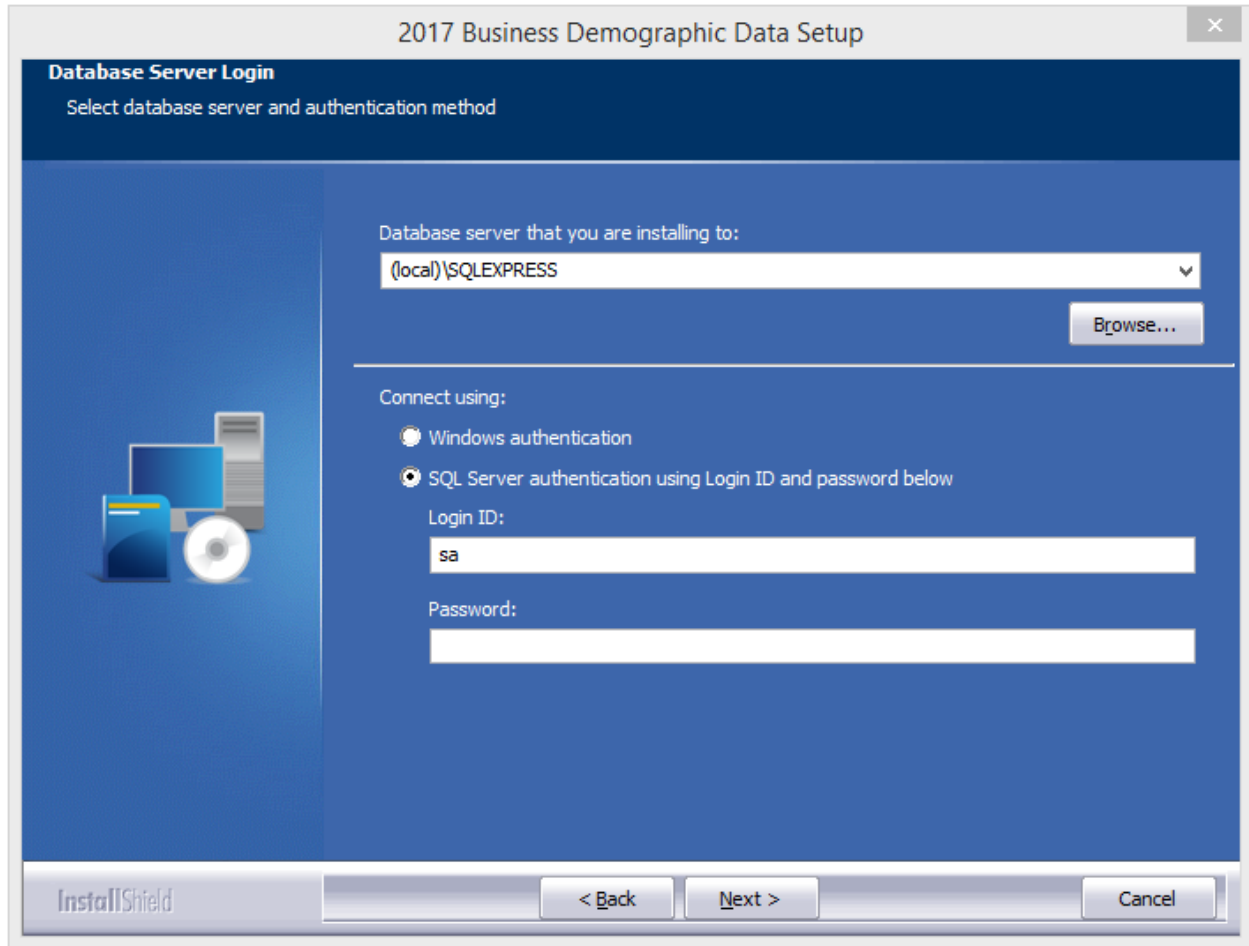
Click the **Next** button:



The software displays the **SQL Server Login** screen.

SQL Server Login Screen

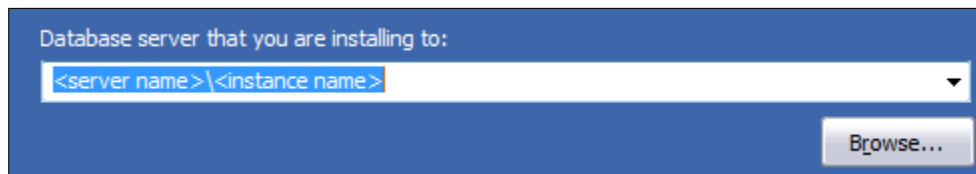
Use this screen to enter the name of the **SQL Server** and to configure authentication options:



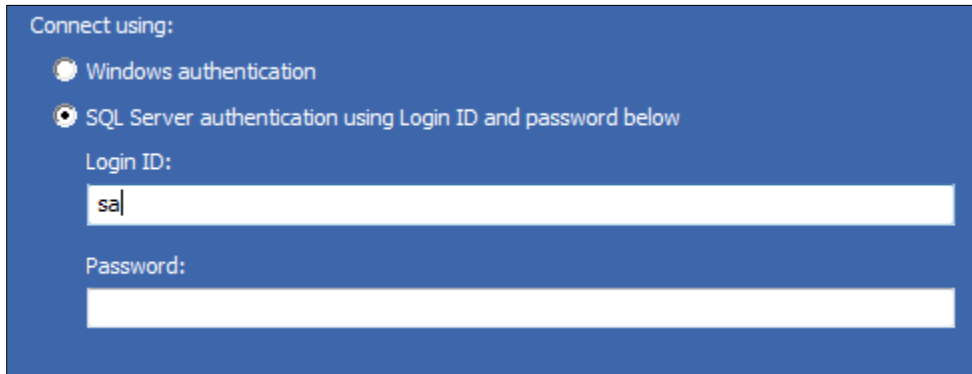
Note: The software displays the Database Server Login screen only if the computer on which you are installing the update is running **SQL Server**. If the installer does not detect SQL Server on your computer, the installer displays the [Ready to Install the Program](#) screen.

1. In the **Database server that you are installing to:** field, enter the **SQL Server name and instance** to which you are installing the data as shown below:

Example: SVRBOS01\SQLEXPRESS



1. Choose one of the following authentication options:
 - Windows Authentication
 - SQL Server Authentication using Login ID and password below - If you select this option, you must also enter your SQL Server account Login ID (user name) and Password in the **Login ID** and **Password** fields.



Connect using:

Windows authentication

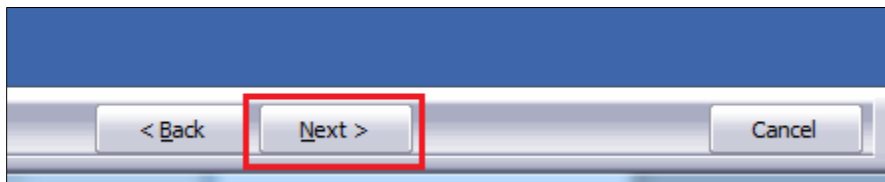
SQL Server authentication using Login ID and password below

Login ID:

sa

Password:

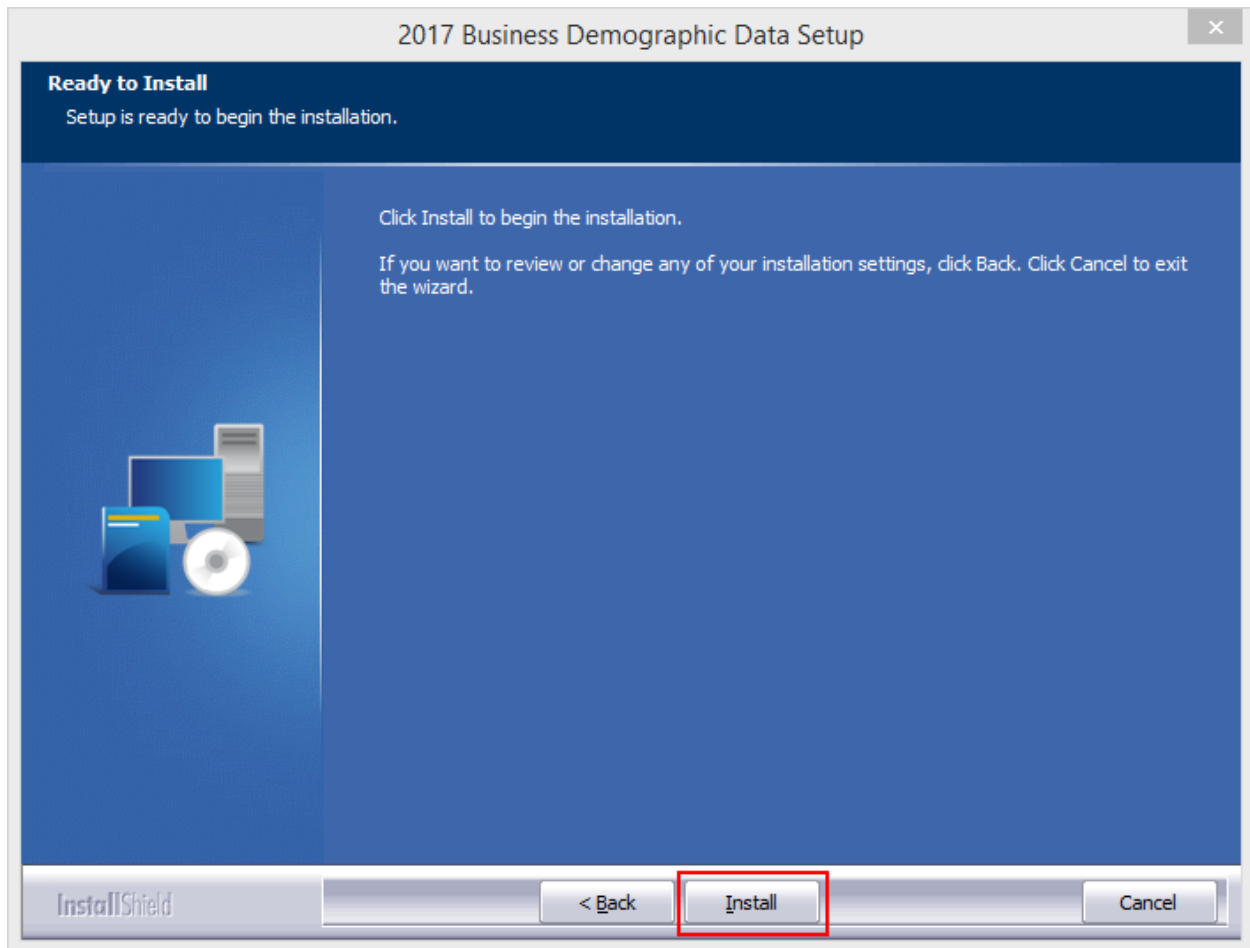
2. Click the **Next** button:



The software displays the **Ready to Install the Program** screen.

Ready to Install Screen

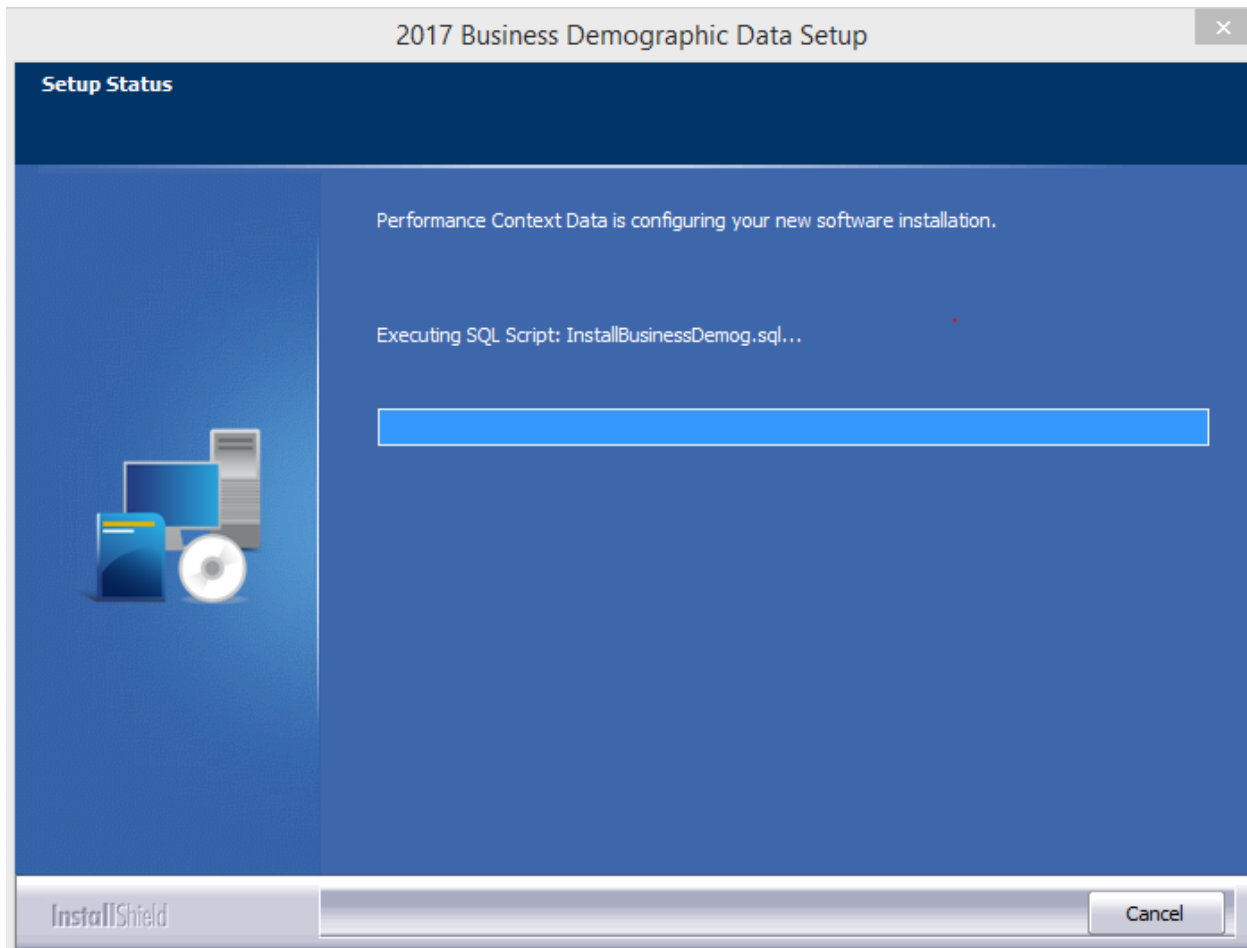
To begin installing the data sets, click the **Install** button:



The installer displays the **Setup Status** screen.

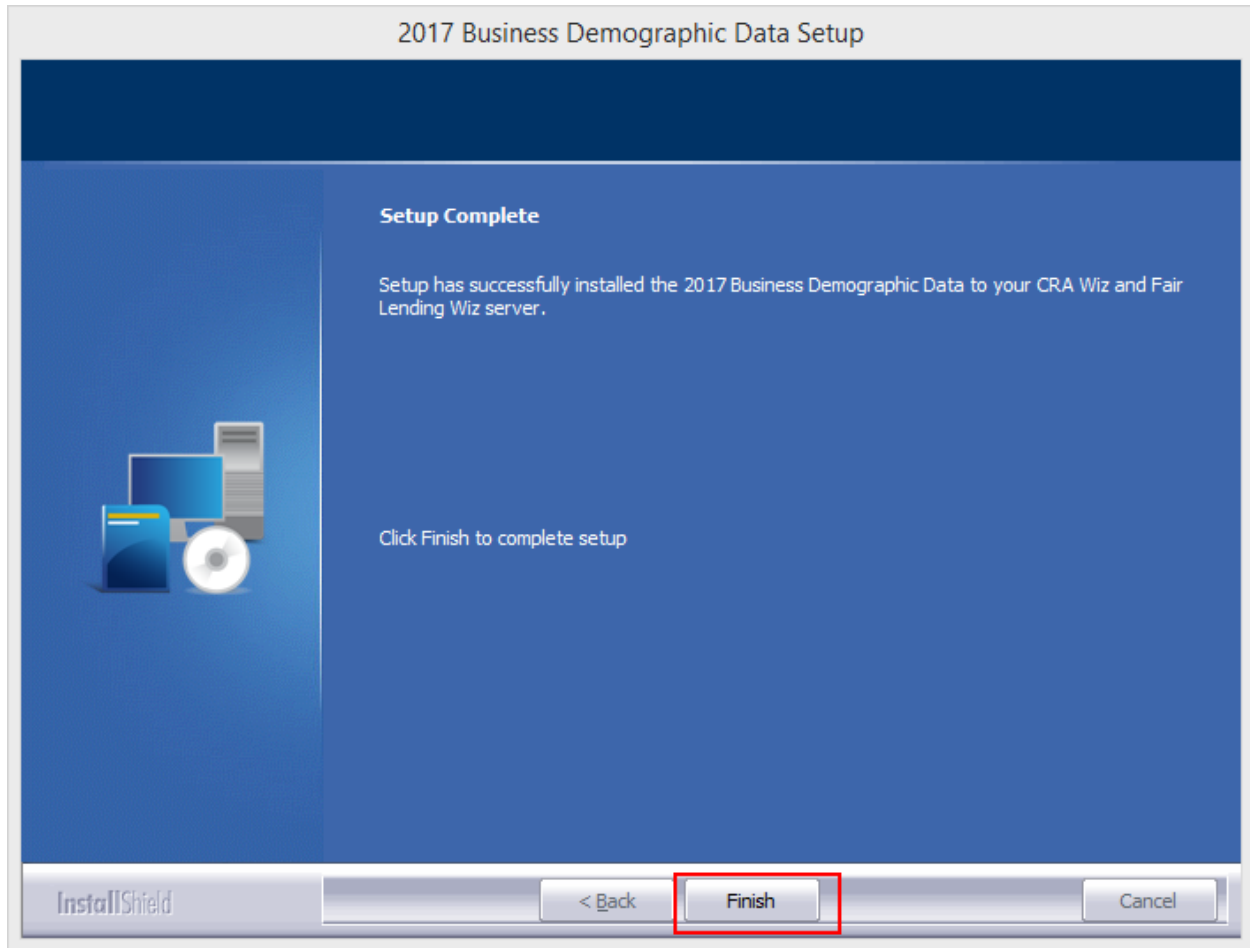
Setup Status Screen

The **Setup Status** screen displays a progress bar that reports the progress of the installation:



Setup Complete Screen

Click the **Finish** button:



Installation is complete

Confirming Installation

Once the installation is complete, you can verify the installation by selecting the **Create Areas** option in the CRA *Wiz* and Fair Lending *Wiz* sidebar. You will also need to set Census boundaries to **2010**, located in the **Options** menu bar item. In **Create Areas**, right click on a demographic area and choose **Show Demographics**. Choose **2017** from the dropdown (1) and you will see Business Demographics in the lower left corner.

	Total	Sales<=1 Mil	Sales>1 Mil	Women/Minority	Count
	9,537	9,178	212	Women Owned	17,647
	257,452	206,327	16,211	Minority Owned	7,613
	266,989	215,505	16,423		

Age	Count	Other Data	Count	Veteran-Owned	Count
5-9	57,091	Headquarters	5,662	All Veteran	3,665
10-19	17,712	Branches	31,884	Vietnam Veteran	549
20-49	12,867	Single Locations	229,443		
50+	7,943	NA	0	SICs	Count
NA	489	Subsidiaries	1,911	Agriculture	9,537
		Proprietorship	45,610	Mining	345
		Partnership	11,818	Construction	19,316
		Corporation	63,578	Manufacturing	9,490
		NA	145,983	Transportation	12,217
		Property Owned	232,226	Wholesale Trade	10,352
		Property Rented	15,417	Retail Trade	40,196
		NA	19,346	Finance, Insurance	20,875
				Services	110,862
				Public Admin.	6,758
				Nonclassifiable	27,041

Sales Volume	Count
<0.5 Mil	202,407
0.5-0.9 Mil	12,476
1-24 Mil	15,656
25-49 Mil	622
50+	767
NA	35,061

Once you've selected Business Demographics (2), you should see data to the right as shown above. If zeroes are displayed, the install was not completed successfully.

Note: The CRA *Wiz* and Fair Lending *Wiz* build number (as found in Help > About CRA *Wiz*) is not updated by the 2017 Business Demographic Data installer.

About Wolters Kluwer Financial Services - Wolters Kluwer Financial Services provides audit, risk and compliance solutions that help financial organizations improve efficiency and effectiveness across their enterprise. Whether complying with regulatory requirements, addressing a single key risk, or working toward a holistic risk management strategy, more than 15,000 customers worldwide count on Wolters Kluwer Financial Services for a comprehensive and dynamic view of risk management and compliance. With more than 30 offices in over 20 countries, the company's prominent brands include: FRSGlobal, ARC Logics for Financial Services, PCi, Bankers Systems, VMP® Mortgage Solutions, AppOne®, GainsKeeper®, Capital Changes, NILS, AuthenticWeb™ and Uniform Forms™. Wolters Kluwer Financial Services is part of Wolters Kluwer, a leading global information services and publishing company with annual revenues of (2011) €3.4 billion (\$4.7 billion) and approximately 19,000 employees worldwide. Please visit our website for more information.

Wolters Kluwer Financial Services
130 Turner Street
Building 3, 4th Floor
Waltham, MA 02453
800.261.3111

© 2017 Wolters Kluwer Financial Services