



Consumer Compliance Solutions

CRA *Wiz* and Fair Lending *Wiz*: 2018 Peer Branch and Deposit Data

Release Notes and Installation Instructions

Release Date: December 2018

Table of Contents

Overview	3
Data Source	3
Who Should Install	3
Prerequisites	3
Required permissions.....	3
Required free space	3
Approx. install time	3
Confirming Installation.....	3
Installation Instructions	4
Welcome Screen	4
SQL Server Login Screen.....	5
Ready to Install Screen.....	6
Setup Status Screen	7
Setup Complete Screen.....	8

Overview

This update allows users to run reports and create maps using Branch and Deposit data from their peers.

Data Source

FDIC

Who Should Install

Any client licensed for Branch and Deposit Data should install this update. To determine if you are licensed for Branch and Deposit Data, go to the **System Maintenance** screen and select **License and Access Management**.

Prerequisites

CRA Wiz and Fair Lending Wiz 7.3 is required to install this update. To check your CRA Wiz and Fair Lending Wiz version, go to the program menu bar and select **Help > About CRA Wiz**. Build numbers starting with "73" are acceptable.

Required permissions

This update is installed as a single database, so both Windows read/write permissions and SQL Server database creation permissions are required. Wolters Kluwer Financial Services recommends that the user running the install have both a Windows admin and SQL Server admin login credentials.

Required free space

Less than 1 GB

Approx. install time

2-5 minutes

Confirming Installation

Once the installation is complete, you can verify the installation by selecting the **File Management** option in the CRA Wiz and Fair Lending Wiz sidebar. You will also need to set Census boundaries to 2010, located in the **Options** menu bar item. The software will then display a file named **2018 Peer Deposit Data** in the **Branch and Deposit Data** folder of the **File Management** screen.

Note: The CRA Wiz and Fair Lending Wiz build number (as found in **Help > About CRA Wiz**) is not updated by the 2018 Peer Branch and Deposit Data installer.

Installation Instructions

To install 2018 Peer Branch and Deposit Data, follow these steps:

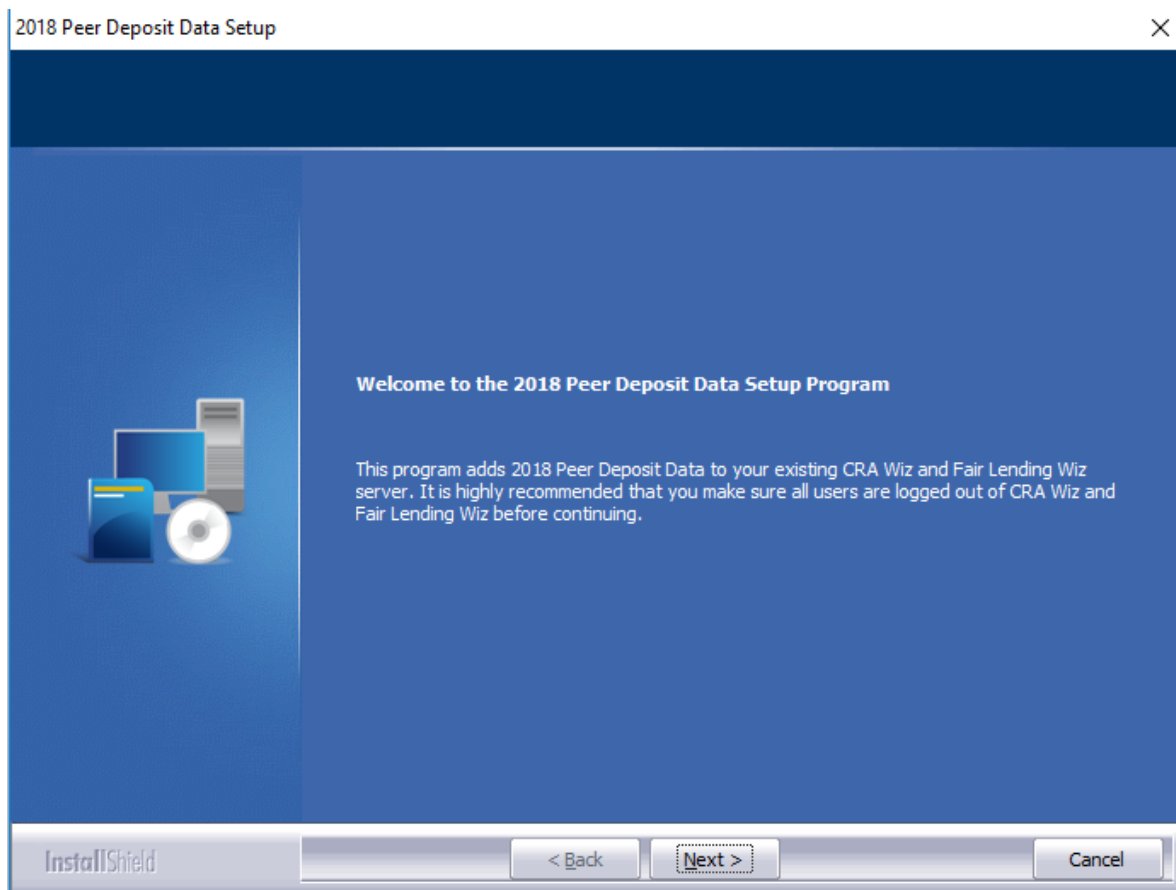
1. After downloading the update locally on the SQL Server, locate and double-click the **2018PeerDepositData** installation file.

The installer displays the **Welcome** screen.

2. Follow the directions for each of the following screens.

Welcome Screen

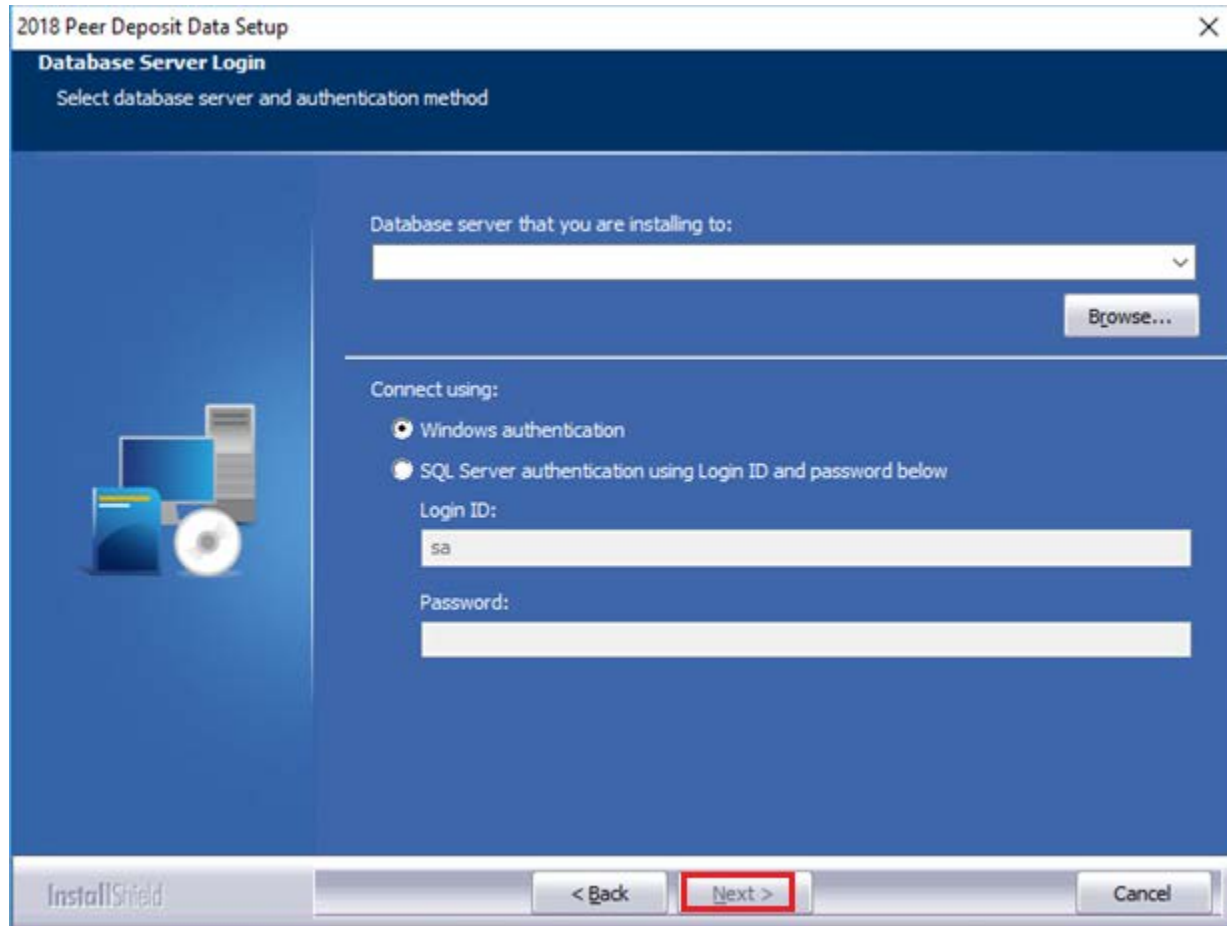
Click the **Next** button:



The software displays the **SQL Server Login** screen.

SQL Server Login Screen

Use this screen to enter the name of the SQL Server and to configure authentication options:

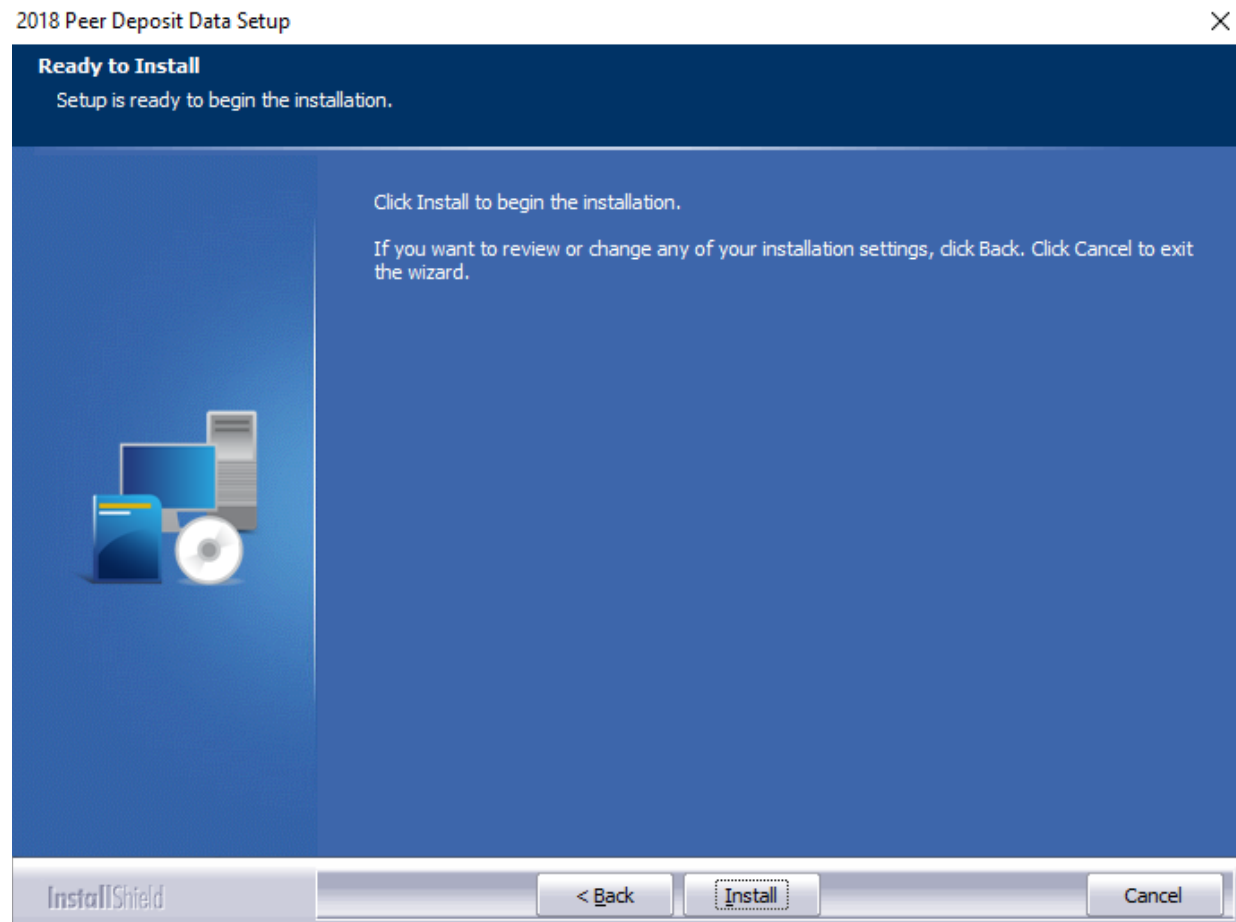


To configure login options, follow these steps:

1. In the **SQL Server** field, enter the name of the SQL Server to which you are installing the data.
2. Choose one of the following authentication options:
 - Use Windows Authentication
 - Use SQL Server Authentication - If you select this option, you must also enter your SQL Server account **User Name** and **Password** in the **User Name** and **Password** fields.
3. Click the **Next** button.

The software displays the **Ready to Install** screen.

Ready to Install Screen

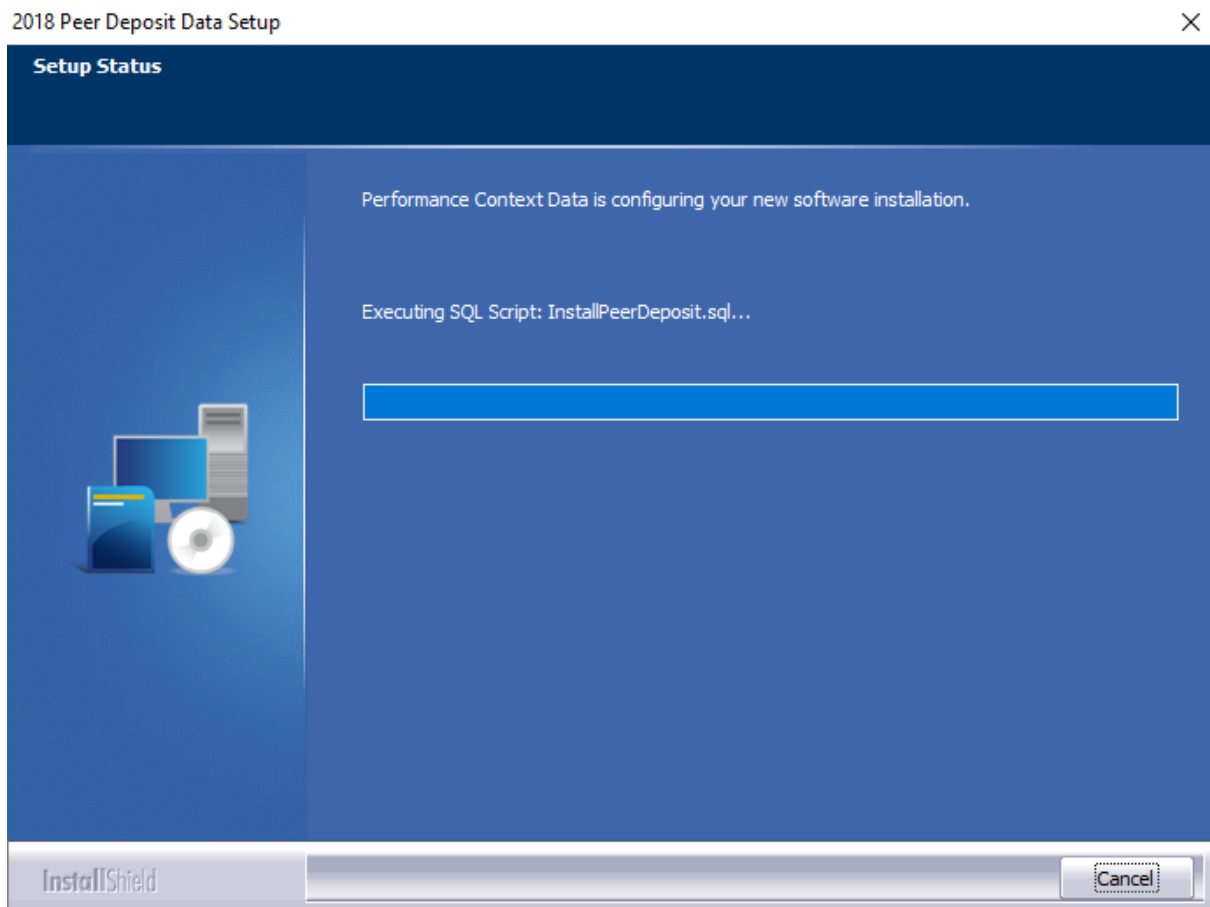


To begin installing the data sets, click the **Install** button:

The installer displays the **Setup Status** screen.

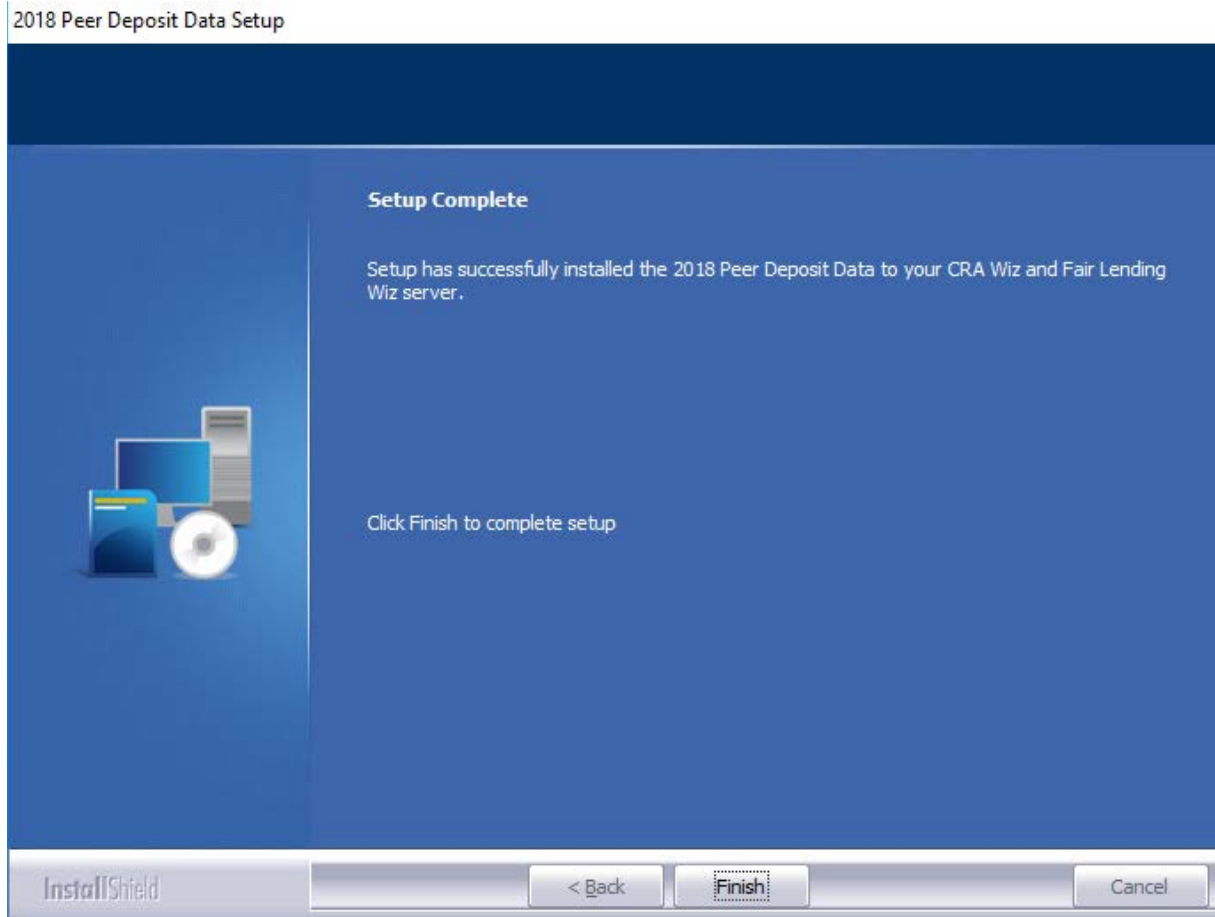
Setup Status Screen

The Setup Status screen displays a progress bar that reports the progress of the installation:



Setup Complete Screen

Click the **Finish** button:



Installation is complete.

About Wolters Kluwer Financial Services - Wolters Kluwer Financial Services provides audit, risk and compliance solutions that help financial organizations improve efficiency and effectiveness across their enterprise. Whether complying with regulatory requirements, addressing a single key risk, or working toward a holistic risk management strategy, more than 15,000 customers worldwide count on Wolters Kluwer Financial Services for a comprehensive and dynamic view of risk management and compliance. With more than 30 offices in over 20 countries, the company's prominent brands include: FRSGlobal, ARC Logics for Financial Services, PCi, Bankers Systems, VMP® Mortgage Solutions, AppOne®, GainsKeeper®, Capital Changes, NILS, AuthenticWeb™ and Uniform Forms™. Wolters Kluwer Financial Services is part of Wolters Kluwer, a leading global information services and publishing company with annual revenues of (2011) €3.4 billion (\$4.7 billion) and approximately 19,000 employees worldwide. Please visit our website for more information.

Wolters Kluwer Financial Services
130 Turner Street
Building 3, 4th Floor
Waltham, MA 02453

800.261.3111

© 2018 Wolters Kluwer Financial Services