

CRA *Wiz* and Fair Lending *Wiz* 6.9: Procedures for Backing up SQL Databases

Overview

As a general practice, Wolters Kluwer Financial Services recommends that institutions periodically back up the SQL databases associated with CRA *Wiz* and Fair Lending *Wiz*. This practice is particularly encouraged prior to performing a program update.

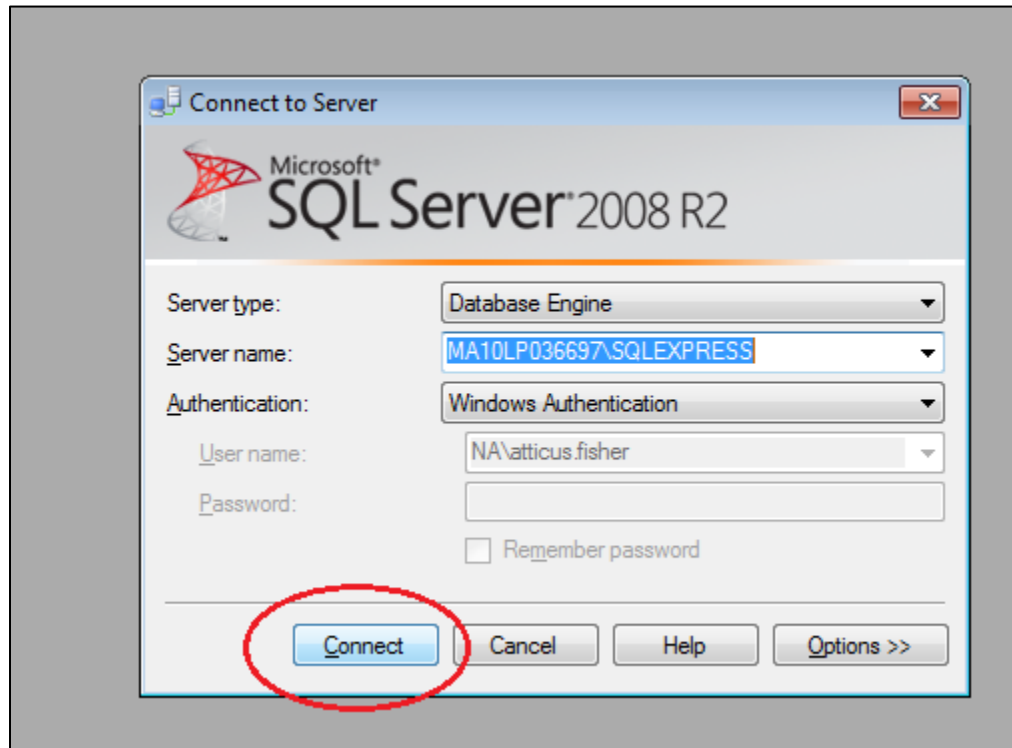
In addition to the five core databases utilized by CRA *Wiz* and Fair Lending *Wiz* (CRB, General, ObjectStore, Procedures and USCensus), Wolters Kluwer Financial Services recommends that institutions also back up any “Wiz” databases that include institution-specific data (for example: Wiz_00001, Wiz_00002, Wiz_00003).

For questions, please contact Wolters Kluwer Financial Services **Technical Support** at **800-261-3111, option 1**.

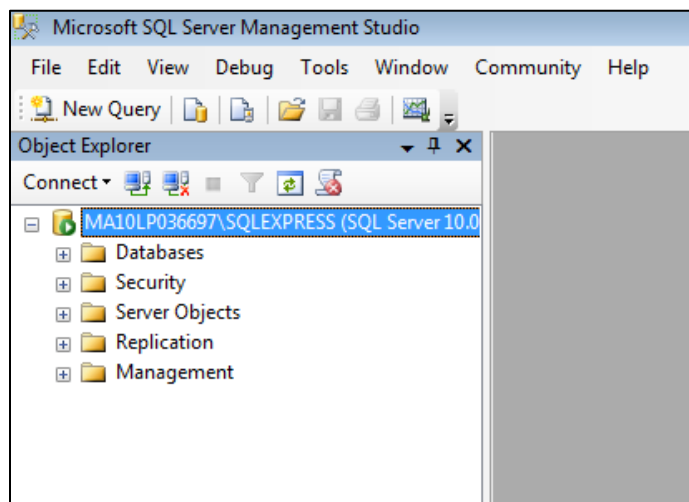
Procedures

To back up a SQL database, follow these steps:

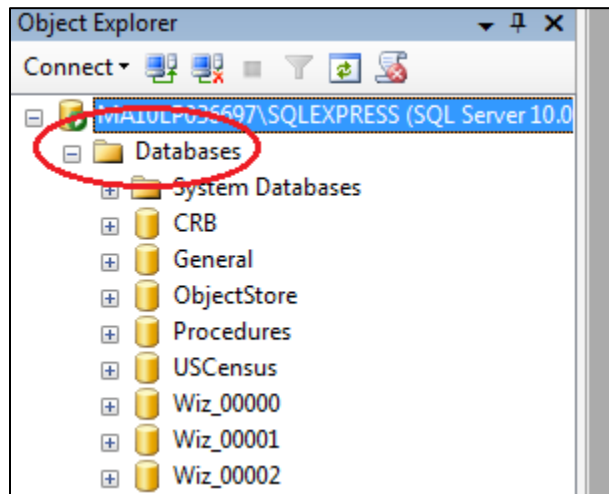
1. Launch **Microsoft SQL Server Management Studio**.
2. In the Connect to Server dialog box, click the **Connect** button:



The software connects to your SQL Server and displays database information in the left pane:

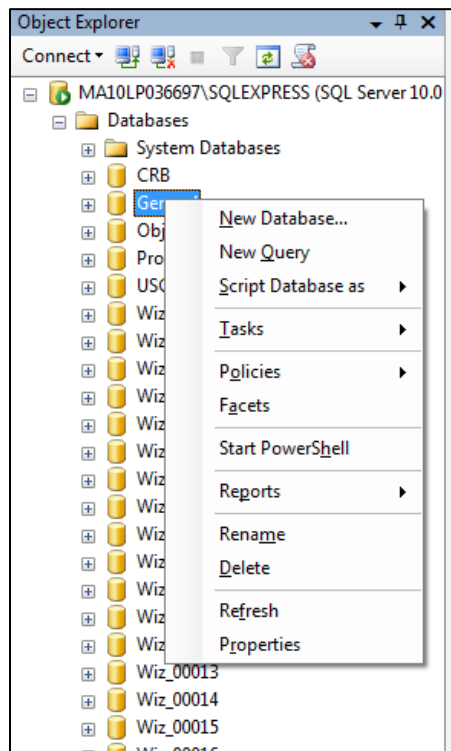


3. In the left pane, use the **Object Explorer tree view** to display the contents of the **Databases** folder:

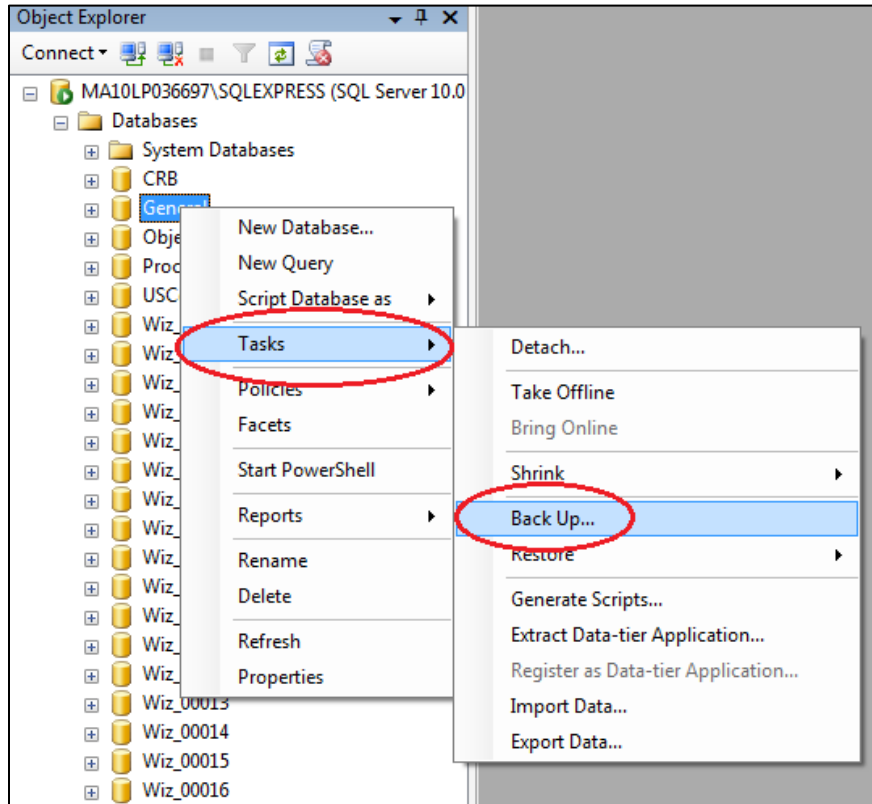


4. Right-click the database you want to back up (for example, **General**).

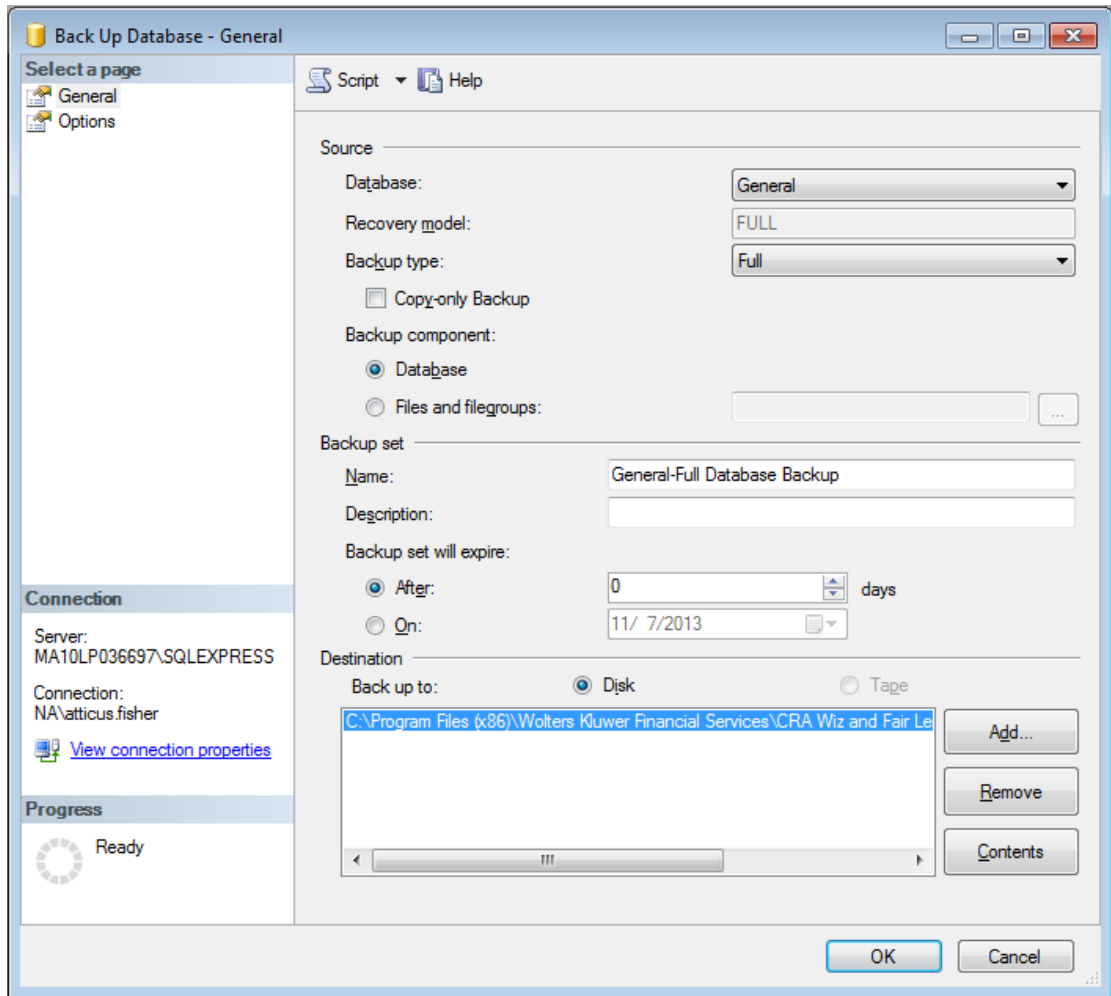
The software displays a contextual menu:



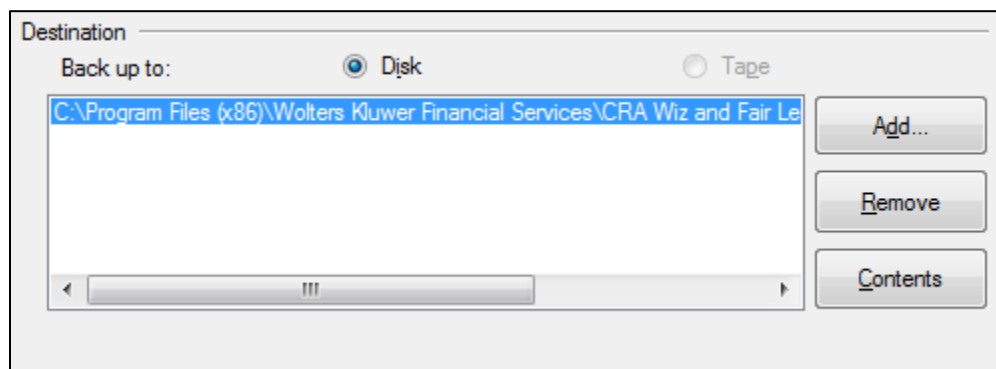
5. In the contextual menu, select **Tasks > Back Up...**:



The software displays the **Back Up Database – General** dialog box:

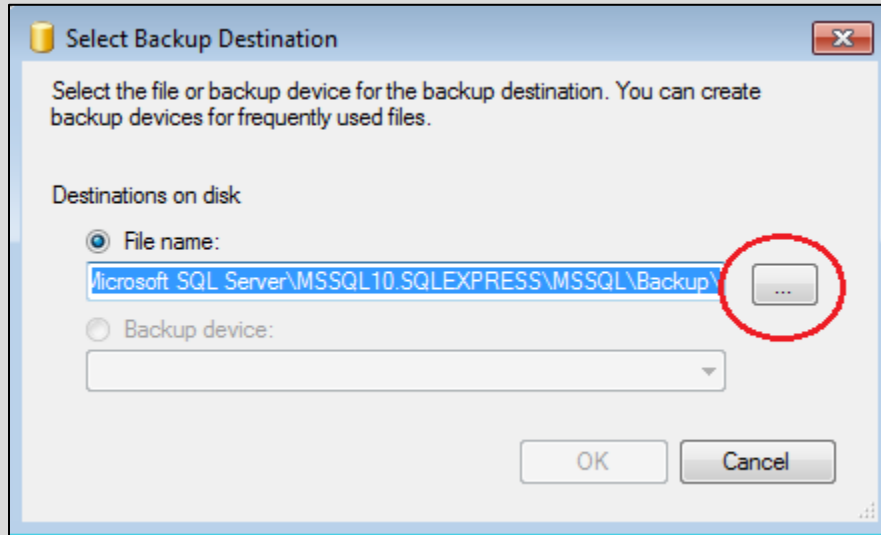


- Use the options in the **Destination** section (located at the bottom of the dialog box) to confirm and/or select the destination folder for the backup:

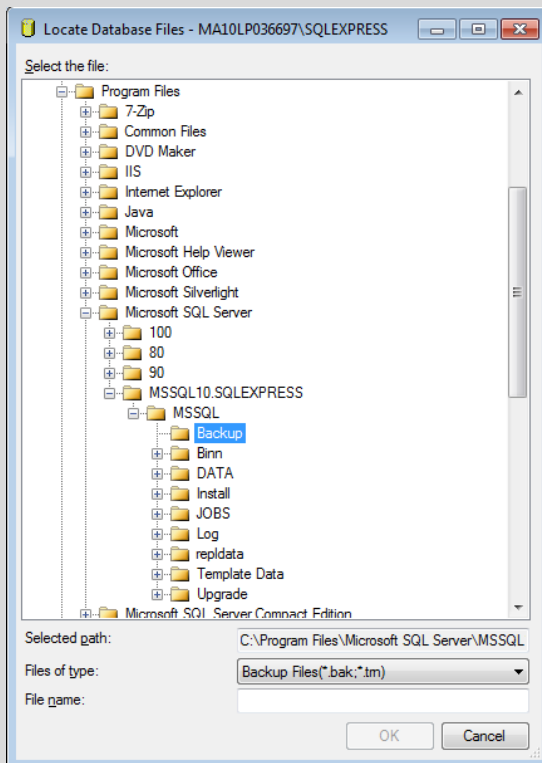


Note:

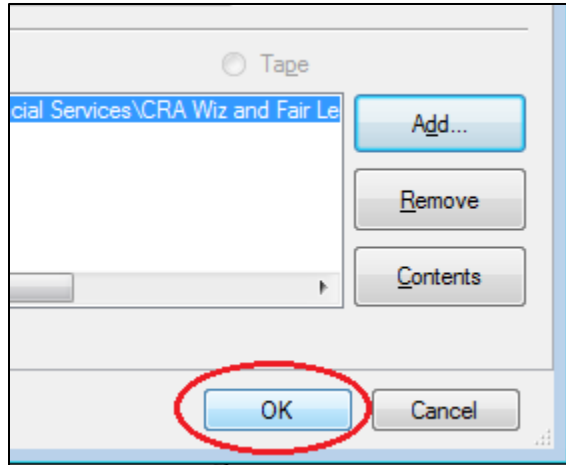
To change the default backup directory destination, click the **Add** button. In the resultant **Select Backup Destination** dialog box, click the ellipsis button located at the end of the **File name** text field:



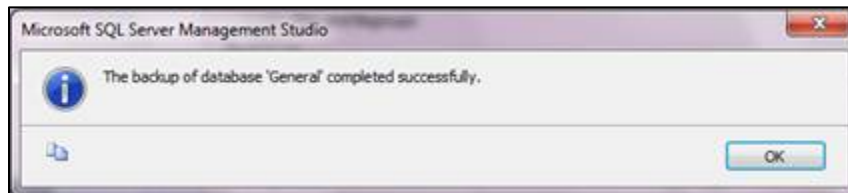
Then use the resultant tree view controls to select a new backup destination:



7. Click the **OK** button located at the bottom-right corner of the dialog box to initiate the database back-up process:



The software backs up the database and displays a confirmation dialog box:



8. Click the **OK** button.
9. Repeat **steps 4 through 8 above** to back up additional databases.