



Consumer Compliance Solutions

CRA *Wiz* and Fair Lending *Wiz* 7.2SP1 (Build 72.10.64) Release Notes

Last Updated May 19, 2017

Table of Contents

Overview	3
HMDA DF file format Support in CRA/FL Wiz 7.2SP1.....	3
HMDA DF file format Support under Construction.....	3
Installation Note	4
Technical Updates.....	4
Data Set Updates	4
CRA <i>Wiz</i> Updates and Enhancements.....	5
Import Wizard	6
File Management	7
Edit	8
Filters.....	8
Custom Tables.....	9
Mapper.....	9
Create Areas.....	10
Reports.....	11
Other Updates.....	11
HMDA DF Known Issues in 7.2SP1	12
Known Issues in 7.2SP1.....	13

Overview

CRA Wiz and Fair Lending Wiz 7.2SP1 (Build 72.10.64) includes compliance updates for HMDA DF regulation, client-requested enhancements, and fixes for issues in previous versions. It can be installed as an upgrade to Version 7.2 or as a new environment.

HMDA DF file format Support in CRA/FL Wiz 7.2SP1

The primary goal of 7.2SP1 is to publish the HMDA DF file format.

Areas supported in 7.2SP1:

- Import Wizard
- File Management
- Edit >Browse View
- Filters
- Columnar Reports
- Custom Tables
- Expression Builder

HMDA DF file format Support under Construction

In subsequent release, remaining areas of the application will be updated to support HMDA DF file format and its data points. As a result, you may experience certain functionality either returning errors or not working. The key areas are listed below

- Check Digit Validation for ULI
- Update Calculated Fields
- Edit Checks (Pending CFPB Release)
- Edit Module>Single Record View
- Reports
- Mapping
- Geocoding
- Create Areas
- Fair Lending Modules & Reports

Installation Note

During the CRA *Wiz* and Fair Lending *Wiz* program install, the installer checks for a **minimum supported SQL version**. The minimum supported SQL Version for CRA *Wiz* and Fair Lending *Wiz* 7.2Sp1 is **SQL Server 2008 R2**.

If you attempt to install the software using an earlier SQL version, the installer displays the following error message:

**'Error 27504. SQL version requirements not met: DVWCRADB11.
This installation requires SQL Server 10.50.6000.34 or later.'**

You can click the **OK** button to acknowledge the message and proceed with installation, however, **Wolters Kluwer does not recommend proceeding with the installation if you are not running SQL Server 2008 R2 or higher**.

For more information, please contact **Wolters Kluwer Technical Support** at **800.261.3111**.

Technical Updates

- Adds support for Windows 10.

Data Set Updates

The following data set versions are included in the 7.2SP1 release:

- 2016 MSA/County Changes
- 2015 Peer Small Business Data
- 2015 Branch and Deposit Data
- 2015 ACS US Census Data Update

CRA *Wiz* Updates and Enhancements

Refer to the following sections for CRA *Wiz* updates included in the 7.2SP1 release:

[HMDA DF File Format Support in CRA FL *Wiz* 7.2SP1](#)

[HMDA DF File Format Support under Construction](#)

[Import Wizard](#)

[File Management](#)

[Edit](#)

[Filters](#)

[Reports](#)

[Mapper](#)

[Create Areas](#)

[Other Updates](#)

[HMDA DF Known Issues in 7.2SP1](#)

[Known Issues in 7.2SP1](#)

Import Wizard

A new HMDA import file structure **Mortgage DF** has been introduced in this release to support HMDA DF regulation which is becoming effective in 2018. It is recommended to create a new Import Format to import your HMDA DF related data points.

The **Mortgage DF** import format structure document has been published and can be located under following link on the Wiz Web Center under the Resource tab.



A new NA Option column has been introduced in the Map Source to Wiz Format screen to better support reports internally. To that extent, if a user wishes to have the option of typing “NA” into a columns that is not "CHAR" data type, user can do so.

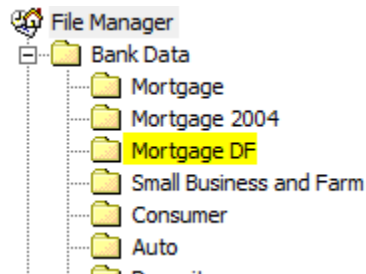
Filter

Map source columns to corresponding Wiz c

Import	Target	Codes	Source	NA Option	Type	Nullable	Size	Precision	Scale	Data Preview
<input type="checkbox"/>	CoaSex	<input type="checkbox"/>	<None>	None	Char	<input checked="" type="checkbox"/>	1	0	0	
<input type="checkbox"/>	Income	<input type="checkbox"/>	<None>	NA Only	Numeric	<input checked="" type="checkbox"/>	9	15	3	
<input type="checkbox"/>	Purchaser	<input type="checkbox"/>	<None>	None	Char	<input checked="" type="checkbox"/>	1	0	0	
<input type="checkbox"/>	Residit	<input type="checkbox"/>	<None>	None	Char	<input checked="" type="checkbox"/>	1	0	0	

File Management

New format for HMDA DF regulation will be placed under new folder called **Mortgage DF**.

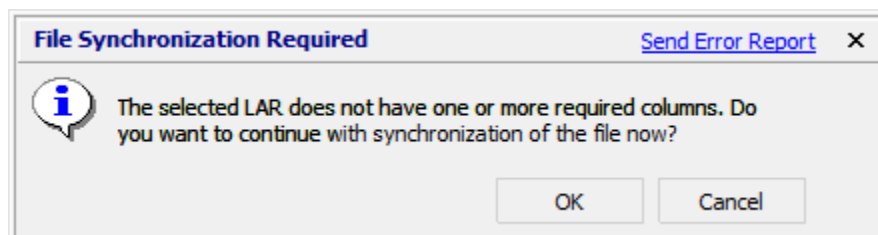


File Synchronization Required

After this update has been applied users will be prompted with the below message to synchronize their file when they go in and work with any of their previously files. The reason behind this required synchronization is to update the RateSpread_NA column to RateSpread_NANC.

If you have scheduled events configured to update existing databases those files will need to be synchronized as well by going into File Management right clicking on the file(s) and choosing Set Current File and clicking OK.

Please note that this change will not impact any of your existing rate spread calculations and once you synchronize a file you will not be prompted to synchronize that file again the next time you use it.



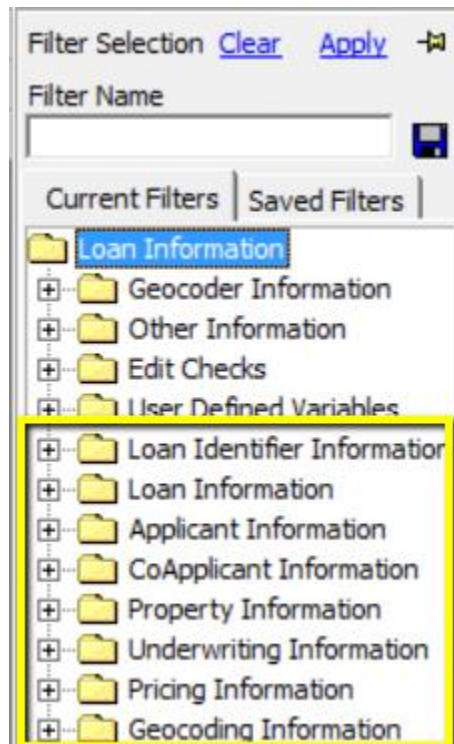
Edit

HMDA DF files after being imported can be viewed by going into Edit and clicking on the Browse tab.

Filter													
Current Record		Browse		Codes		Geocoder							
RowId	RecordId	LEI	ULI	AppDate	LoanType	Purpose	Preapproval	ConstructionMethod	OccupancyType	LoanAmountInDollars	LoanAmount	Action	ActionDate
1													

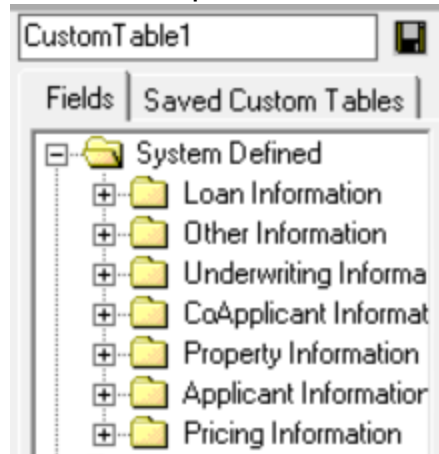
Filters

HMDA DF data points now are grouped in following structure. This is also reflected in the HMDA DF Import Structure Document.



Custom Tables

HMDA DF data points can be utilized to build reports from Custom Tables Module.



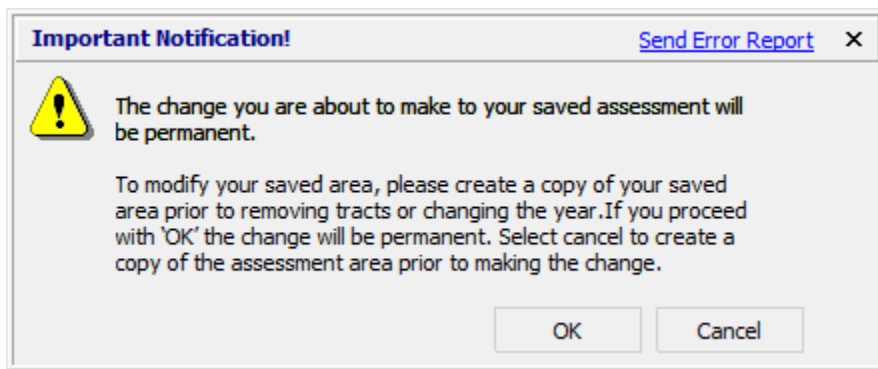
Mapper

Mapper has been updated to reflect the 2015 ACS Data in the top right corner if you are working in the 2017 or 2018 activity years

Create Areas

The below message has been introduced in Create Areas in 7.2sp1 if a saved area has been appended to the Grid and you modify the Activity Year.

If you click OK to the message your Saved Area will automatically be recreated based on the new activity year. In other words if you have a Saved Area that contains a census tract that changed in NY, AZ, or CA in 2017 and you have the 2017 area appended to the grid you will want to click Cancel to create a copy of the Saved Area prior to changing the activity year to prevent the census tract(s) that changed from being removed from your Saved Area.



Reports

Median Age of Housing Stock in Columnar Reports has been updated to calculate the age of the stock by subtracting 2010 from the Median Year Built. For this reason there are now 2 census tracts in Florida that have a Median Age of -1 in the Columnar Reports because the median age of housing stock is 2011 in those tracts

State	County	Census Tract	Median Year Built
12	057	0040.00	2011
12	119	9114.00	2011

Other Updates

1. Footer of reports have been updated to reflect '2015 ACS US Census' when working in the 2017 or 2018 activity year. **(Tracking # 88304)**
2. Replace Commands can now be ran on the State field again **(Tracking # 82620)**
3. Removed automatic assignment to the Assessment field when Update Calculated Fields is performed **(Tracking # 85598)**
4. Export to Word from PE Reports is now working correctly **(Tracking # 89429)**
5. If you perform an update to an existing file with Geocoding Information the MMWStat field is now populated with a 99 for all records that contain valid geocoding information **(Tracking # 66269)**

HMDA DF Known Issues in 7.2SP1

- AUSResult1/2/3/4/5 Fields dropdown list is out of order in Edit (**Tracking#86155**)
- Data Type for the Date Fields (ApplDate, ActionDate, APOR_Date, and Rate_Lock_Date) varies from Mapping Screen to Modify Structure (**Tracking#94208**)
- Columns wrap around on the source file selection format screen when importing a HMDF csv files (**Tracking#95418**)
- The leading 0 is dropped from the InterestRate field when a user saves a record and clicks on the edit icon (**Tracking#95426**)
- System allows for you to type more characters than maximum specified in Modify Structure which results in loss of characters beyond allowed characters limit if you save (**Tracking#95431**)
- XXX_NA columns are not visible in edit screen even if the XXX_NA fields are enabled in Select Columns to View (**Tracking#95442**)
- An error message 'Invalid Column name 'applnumb' is displayed if you attempt to generate the Geocode Exception Report (**Tracking#95641**)
- System generates an error if you click on the Geocoder tab (**Tracking#95642**)
- Invalid procedure call or argument error if you attempt to generate the Govt. Exception Detailed Report (**Tracking#95643**)

Known Issues in 7.2SP1

- Census Tracts are being deleted by the system in Saved Assessment Areas if they contain tracts that changed in 2017 and the Saved Area is appended to Grid with year set to 2016 (Tracking # 100245). Temporary fix has been implemented in this release. Please refer to this [Link](#).
- CRA Tables are excluding files if LAR Permissions are enabled (Tracking # 97770)



About Wolters Kluwer Financial Services - Wolters Kluwer Financial Services provides audit, risk and compliance solutions that help financial organizations improve efficiency and effectiveness across their enterprise. Whether complying with regulatory requirements, addressing a single key risk, or working toward a holistic risk management strategy, more than 15,000 customers worldwide count on Wolters Kluwer Financial Services for a comprehensive and dynamic view of risk management and compliance. With more than 30 offices in over 20 countries, the company's prominent brands include: FRSGlobal, ARC Logics for Financial Services, PCi, Bankers Systems, VMP® Mortgage Solutions, AppOne®, GainsKeeper®, Capital Changes, NILS, AuthenticWeb™ and Uniform Forms™. Wolters Kluwer Financial Services is part of Wolters Kluwer, a leading global information services and publishing company with annual revenues of (2011) €3.4 billion (\$4.7 billion) and approximately 19,000 employees worldwide. Please visit our website for more information.

Wolters Kluwer Financial Services
130 Turner Street
Building 3, 4th Floor
Waltham, MA 02453

800.261.3111