

CRA *Wiz* and Fair Lending *Wiz* 7.2SP1 Hotfix (Build 72.11.25)

Release Notes

September 2017

Table of Contents

Overview 3

Installation Notes 3

CRA *Wiz* and Fair Lending *Wiz* Updates and Enhancements 3

BISG Proxy Enhancements 4

 Imputing BISG Proxy Using 2010 US Census Surname Table 4

 Imputing BISG Proxy Using 2000 US Census Surname Table 5

 Running BISG Comparison Report 5

Race/Ethnicity Proxy Enhancements 7

Other Software Updates 8

 Saved Assessment Areas..... 8

 HMDA DF Data Format 8

 CRA Tables..... 8

Appendix A – Summary of BISG Proxy Enhancements 9

Overview

The **CRA *Wiz* and Fair Lending *Wiz* 7.2SP1 Hotfix (Build 72.11.25)** includes updates for the HMDA DF regulation, Proxy Updates, and bug fixes.

Important! The Hotfix can be installed as an upgrade to **CRA *Wiz* and Fair Lending *Wiz* version 7.2 SP1**, but please note that it is **optional** to install as the Hotfix will be included in the **CRA *Wiz* and Fair Lending *Wiz* Version 7.3 release** scheduled for later this year.

Installation Notes

This Hotfix requires **15 gigabytes (GB)** of free space to install.

For more information, please contact **Wolters Kluwer Technical Support** at **800.261.3111**.

CRA *Wiz* and Fair Lending *Wiz* Updates and Enhancements

Refer to the following sections for CRA *Wiz* and Fair Lending *Wiz* updates included in the 7.2 SP1 Hotfix release:

[BISG Proxy Enhancements](#)

[Race/Ethnicity Proxy Enhancements](#)

[Bug Fixes](#)

BISG Proxy Enhancements

BISG proxy has undergone two key updates as part of this release. For more information, refer to the following sections:

[Imputing BISG Proxy Using 2010 US Census Surname Table](#)

[Imputing BISG Proxy Using 2000 US Census Surname Table](#)

[Running BISG Comparison Report](#)

Imputing BISG Proxy Using 2010 US Census Surname Table

The **2010 US Census Surname Table** has been added as an option to execute BISG against. Therefore, as of April 2017, any non-HMDA data subject to CFPB proxy should use the 2010 surname table:

As of April 2017, examination teams are relying on an updated proxy methodology that reflects the newly available surname data from the Census Bureau. Our updated proxy methodology relies on the race and ethnicity shares for the 162,253 names that appear on the 2010 list and supplements this list with the race and ethnicity shares for the 5,155 names that appear on the 2000 list but not on the 2010 list, resulting in a list of 167,409 surnames in total.⁹

Source: <https://github.com/cfpb/proxy-methodology>

After applying the Hotfix, **File Management** provides the following two options for all files if you choose to impute BISG Race Proxy:

Impute BISG Race Based on ▶	Surname 2000 ▶
BISG LAR Comparison Report	Surname 2010 ▶

If you select either of these **Surname** options you will still be prompted to execute **the Proxy for Applicant Only, Co Applicant, Both**, or you can **Clear Current Values**:

Surname 2010 ▶	Applicant
	Co Applicant
	Both
	Clear Current Values

Imputing BISG Proxy Using 2000 US Census Surname Table

With this Hotfix, enhancements have been made to BISG to align with CFPB's data filter approach (before BISG proxy method is executed) to assign Race/Ethnicity using either the **2000 US Census Surname Table** or the **2010 US Census Surname Table**.

This will have an impact on data already run through using the 2000 US Census Surname Table prior to the applying the CRA Wiz and Fair Lending Wiz 7.2 SP1 Hotfix.

Important! Wolters Kluwer recommends that clients re-run their consumer data in the enhanced BISG proxy for data which was ran against Surname 2000 table in order to apply the enhanced updates outlined in [Appendix A](#).

The following steps illustrate the above using an example:

Example: User ran BISG proxy on file "Consumer BISG" with the **2000 US Census Surname Table** in **December of 2016**.

1. Duplicate/copy the "Consumer BISG" file to the same folder where file currently exists.
2. Rename duplicated file from "Consumer BISG (001)" to any other name. For the purposes of this example it is renamed to "Consumer Rerun BSIG."
3. Re-Run BISG Proxy using the 2000 US Census Surname Table on the "Consumer Re-Run BISG" (duplicated) file.

After re-running BISG Proxy, the "Consumer BISG" file will contain 2000 US Census Surname Table proxy data from prior to the 7.2 SP1 Hotfix, and the "Consumer Re-Run BISG" will contain 2000 US Census Surname Table proxy data.

Note: You can run a comparison report to compare the differences in the BISG results. For more information, refer to the following section.

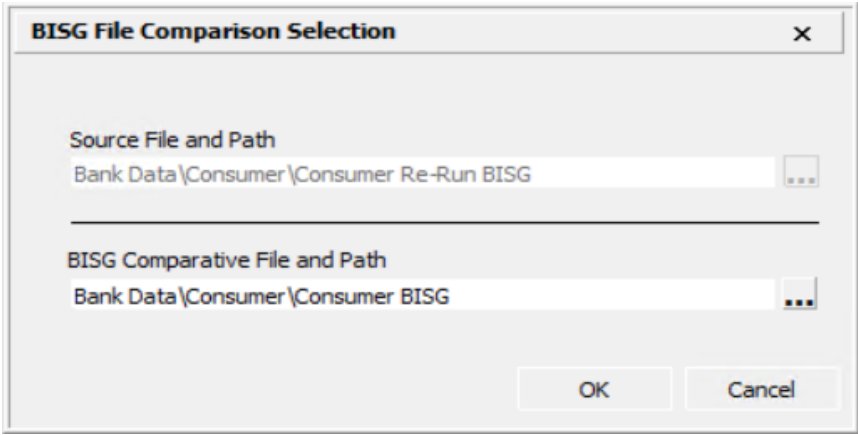
Running BISG Comparison Report

Following are steps on how to execute the BISG Comparison Report:

1. In **File Management**, right-click on the file for which BISG Proxy has been re-run (in this example, "Consumer Re-Run BISG").
2. Select the **BISG Comparison Report**.

Note: The source file you select should be the **copied** file in which BISG proxy was executed using the 2000 US Census Surname Table **after** application of the CRA Wiz and Fair Lending Wiz 7.2 SP1 hotfix.

The software displays the below dialog box with the "Consumer Re-Run BISG" file selected by default:



- 3. Select the comparison file (for this example, “Consumer BISG”).
- 4. Click the **OK** button to launch the comparison report in spreadsheet (.csv) format:

A	B	J	K	L	M	N	O	P	Q	R	S	T
Applnumb	Race	RaceEthPct	RaceEthPct	CoaRaceEthPct	CoaRaceEthPct	RaceEth	RaceEth	CoaRaceEth	CoaRaceEth	RBISGAIPct	RBISGAIPct	CORBISGAIPct
	Source File	Source File	Comparative File	Source File	Comparative File	Source File	Comparative File	Source File	Comparative File	Source File	Comparative File	Source File
4738628		97.7924	97.7924	95.9311	95.9311	White	White	White	White	0	0	0
4738630		76.9899	76.9899			White	White			0.1717	0.1717	
4738637		97.6522	97.6522	96.5802	96.5802	White	White	White	White	0.3628	0.3628	0.2086
4738639		57.0482	57.0482			Black or African American	Black or African American			0.0229	0.0229	
4738645		94.4779	94.4779			White	White			0.4874	0.4874	

Note: The comparison report contains BISG proxy related values in columns from **both** the **source** and **comparative** files. In addition, the software displays the **Applnumb** field to provide a unique identifier between the two files.

Known Issue: Will be addressed in Version 7.3

Bug: 110493 - Comparison Report does not populate Race, CoaRace, Ethnicity, or Coa_Ethnicity fields for Consumer files

Race/Ethnicity Proxy Enhancements

The **2010 US Census Surname Table** has been added as an option to execute **Race proxy** and **Ethnicity proxy**. Prior to this change Race/Ethnicity proxies used the 2000 US Census Surname Table.

After applying the Hotfix, In **File Management**, you will see two **Surname** options (below) when right-clicking on a file and choosing **Impute Race or Ethnicity**:

Impute Race Based on	Surname 2000
Impute BISG Race Based on	Surname 2010
Impute Ethnicity Based on Last name	Surname 2000
Impute Race Based on	Surname 2010

Note: The option of using either 2000 or 2010 US Census Surname Tables for Race proxy or Ethnicity proxy is dependent on determining, with guidance provided by your Compliance officer/group, which table is most suitable for proxy data.

Once you select either of these Surname options, you then select to execute the Proxy for **Applicant Only**, **Co Applicant Only**, **Both**, or you can **Clear Current Values**:

Surname 2010	Applicant
	Co Applicant
	Both
	Clear Current Values

Other Software Updates

For information, on other software updates, refer to the following sections:

[Saved Assessment Areas](#)

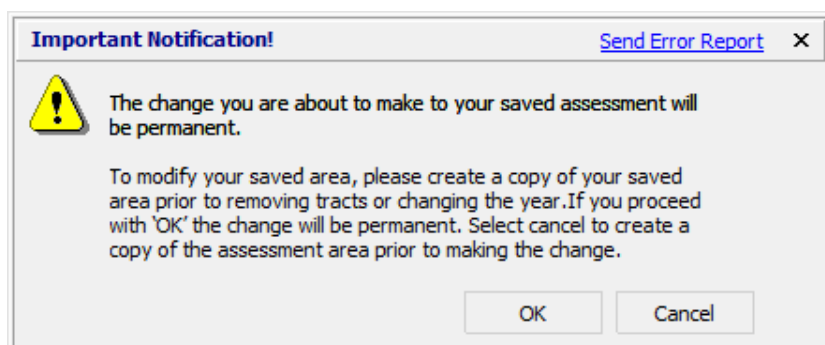
[HMDA DF Data Format](#)

[CRA Tables](#)

Saved Assessment Areas

Fixed issue in which Census Tracts were being deleted by the system in **Saved Assessment Areas** if they contained tracts that changed in 2017 and the Saved Area was **Appended to Grid** with **Activity Year** set to **2016**. (Tracking # 100245)

- The below message that was implemented in **7.2 SP1** has been removed:



- Saved Assessment Areas are no longer automatically saved when they are populated in the bottom grid of Create Areas and the activity year is changed.

HMDA DF Data Format

Fixed issue in which the **data type** for the following **Date Fields** varied between the **Mapping** and **Modify Structure** modules:

- ApplDate
- ActionDate
- APOR_Date
- Rate_Lock_Date

Previously, the data type for these fields was defined as "NVarChar". After applying the Hotfix, the data type supported is "DateTime." (Tracking# 94208, 107134)

CRA Tables

Fixed issue in which Tables were excluding files if LAR Permissions were enabled. (Tracking # 97770)

Appendix A – Summary of BISG Proxy Enhancements

With the release of **CRA and Fair Lending Wiz 7.2 SP1 hotfix**, the **BISG Race/Ethnicity Proxy methodology** will be enhanced to more closely align with the methodology implemented by the CFPB.

The enhancements are specific to the way that data is filtered to derive geographic and surname probabilities from the US Census before they are passed to the proxy algorithm. There are no changes to the proxy algorithm itself.

Important! In order to apply these enhanced methodologies, Wolters Kluwer recommends that clients re-run BISG proxy for any consumer data files that utilized the 2000 US Census Surname Table.

1. In the current version, U.S. Census Geographic Last Name data considers total population and does not filter for individuals of 18 or older within the population. An enhancement has been applied to filter U.S. Census Geographic Last Name for individuals 18 and older.
2. New filters have been created in order to clean the data for the processing of last names:
 - a. Single quotes (') and letters (a-ce-np-z) will now be removed from last names prior to matching. This change will enable the system to use the exact last name when referencing to last name list from US census.
 - b. Common suffixes such as Jr, Sr, II, etc. and special characters such as '{}\0-9 will now be replaced with a space.
 - c. After splitting last name, the system will use only the first two (2) names to match instead of considered all last names.
3. Default location match is currently based on Block Group, Census Tract, and Block, as indicated by the BISG Race setting in user administration. To better align with the CFPB's approach, location match will default to Block Group, Census Tract, and ZIP.
4. Location data for U.S. territories will be excluded when determining geographic location probabilities as per the approach taken by CFPB which excludes all U.S. territories.

5. Non-Hispanic population will be proportionally distributed to Non-Hispanic – Other race counts. Currently the system does not proportionally redistribute of Non-Hispanic Other population to remaining Non-Hispanic groups within each block. The WK BISG proxy methodology will be enhanced to more closely align consideration of US National population vs. geographic group population for particular race when determining Probability to pass in Bayesian formula:

CFPB Guidance - A given race (e.g. White) population within a given block or census tract or zip is divided by the total given race (e.g. Non-Hispanic White) population for US to determine probability passed in the Bayesian method.

WK Implementation- A given race (e.g. white) population within a given block or census tract or zip is divided by total population within a given block group or census tract or zip is passed in the Bayesian method.

Important! In order to apply these enhanced methodologies, Wolters Kluwer recommends that clients re-run BISG proxy for any consumer data files that utilized the 2000 US Census Surname Table.