

Installation Instructions and
Release Notes

October 2023

Financial & Corporate Compliance

CRA *Wiz* and Fair Lending *Wiz*: 2023-Q3 Geocoding Data

Content

1	Overview	3
1.1	Who should install?	3
1.2	Where to install	3
1.3	Prerequisites	3
1.4	Required permissions	3
1.5	Required disk free space and install times	3
2	Installation Instructions	4
3	Note about Geocoding Data Path	10
4	Confirming Installation	11
5	Testing Addresses	12

1 Overview

You have now received the **2023-Q3 geocoding dataset**. Each year millions of new addresses and corrections are made to the geocoding data. Using the most up-to date address data will help you to achieve a higher match rate and more-accurate matches.

Important!

The FFIEC recently changed their geocoding provider to ESRI and because they are now using a different provider, this can lead to additional instances where the results provided by the geocoder and FFIEC do not match.

Please note that despite the FFIEC's decision to go with a different geocoding vendor, we continue to have a high level of confidence in the accuracy of our geocoder.

Regulators will look for consistency in geocoding methods, and as long as you are consistent, they will accept your results.

1.1 Who should install?

All clients that use CRA *Wiz* and Fair Lending *Wiz* as their geocoding provider should install this update.

1.2 Where to install

The update should be installed only on the server. To find the current location of your geocoding data go to **System Maintenance > Data and Application Mapping** and check the path next to **Geocoding Data – 2020**. If you do not have access to the application, below is a SQL Query that can be run to determine the current location of the data:

```
use objectstore
select Location from dbo.elementlocations
where ElementName='Geocoding Data - 2020'
```

1.3 Prerequisites

CRA *Wiz* and Fair Lending *Wiz* 7.6 or later is required.

1.4 Required permissions

The geocoding installer uses an executable to write files to a drive of your choice. A Windows administrator account is recommended.

1.5 Required disk free space and install times

For Workstation:

- Minimum required space: **10.9 GB (gigabytes)**
- Approximate space consumed by geodata installer: **10.8 GB**
- Approximate installation time: **11 minutes**

For Server:

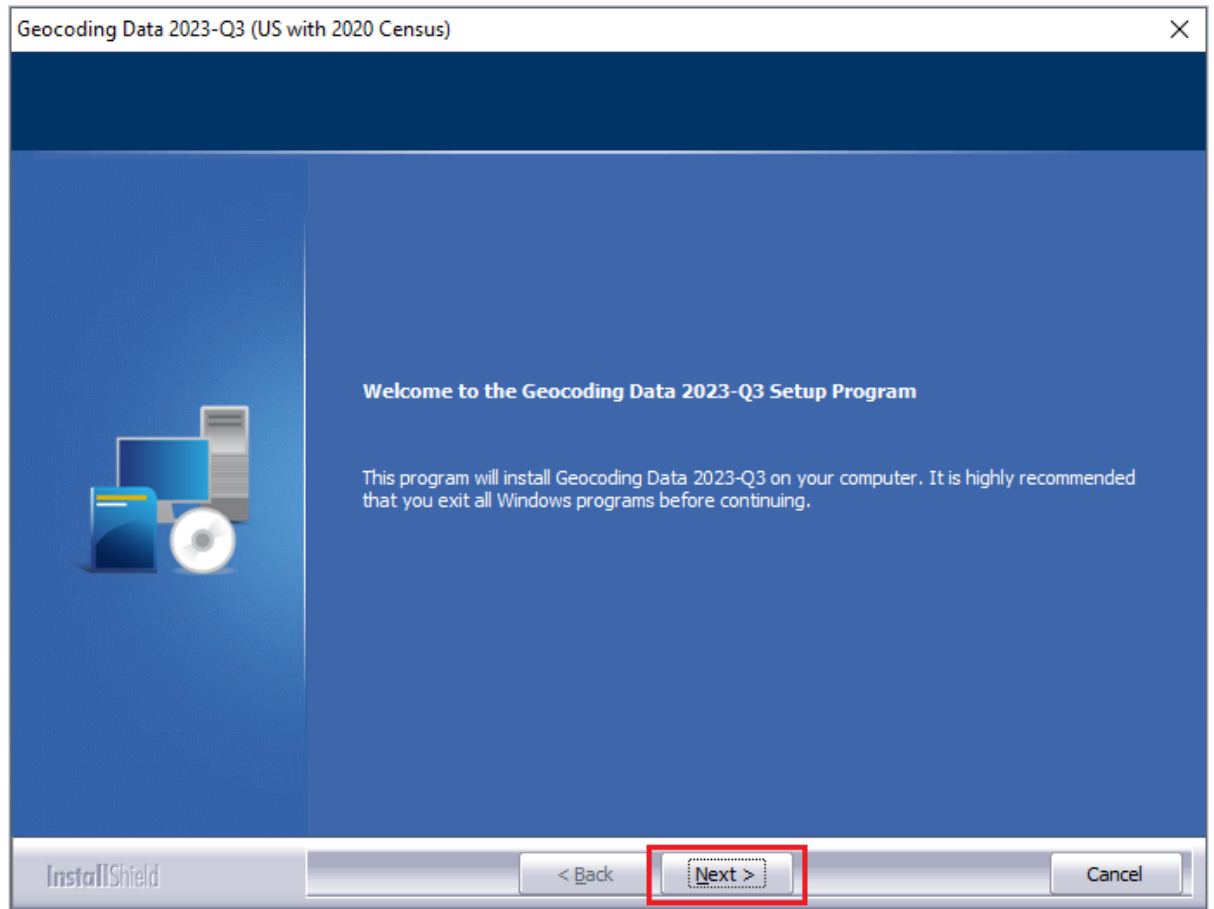
- Minimum required space: **10.9 GB (gigabytes)**
- Approximate space consumed by geodata installer: **10.8 GB**
- Approximate installation time: **11 minutes**

2 Installation Instructions

To install geocoding data, do the following:

1. Using the **2023-Q3 Geocoding Data Install**, run the **Setup.exe**.

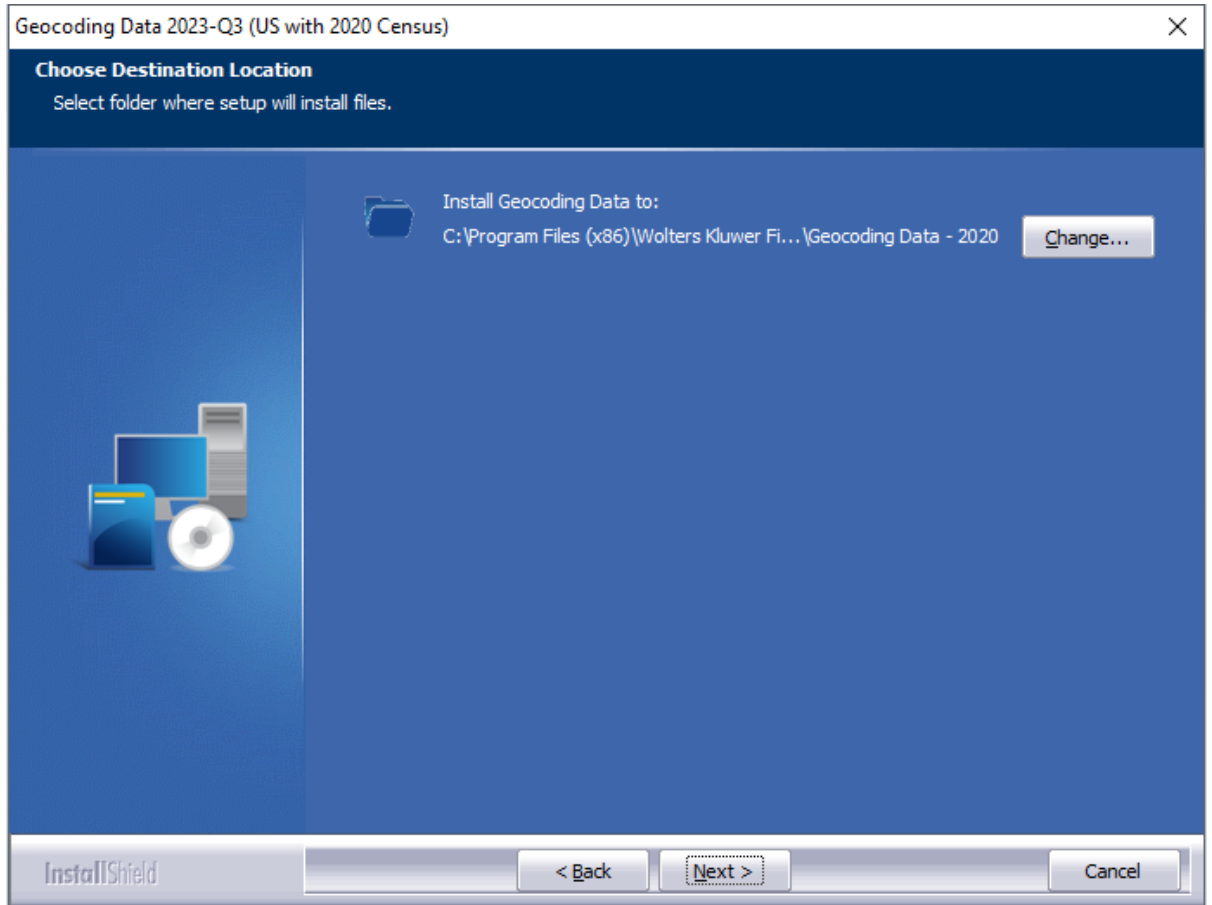
The installer displays the **Welcome** screen:



2. Click the **Next** button.

The installer displays the **Choose Destination Location** screen.

3. In the **Choose Destination Location** screen, do one of the following:

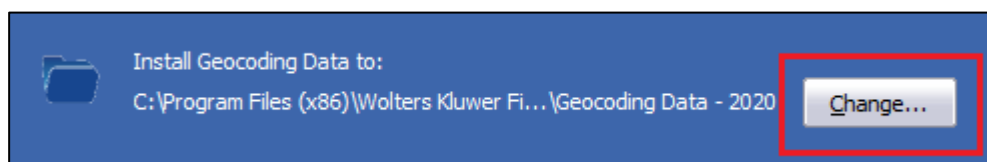


- If you want to accept the default installation location:

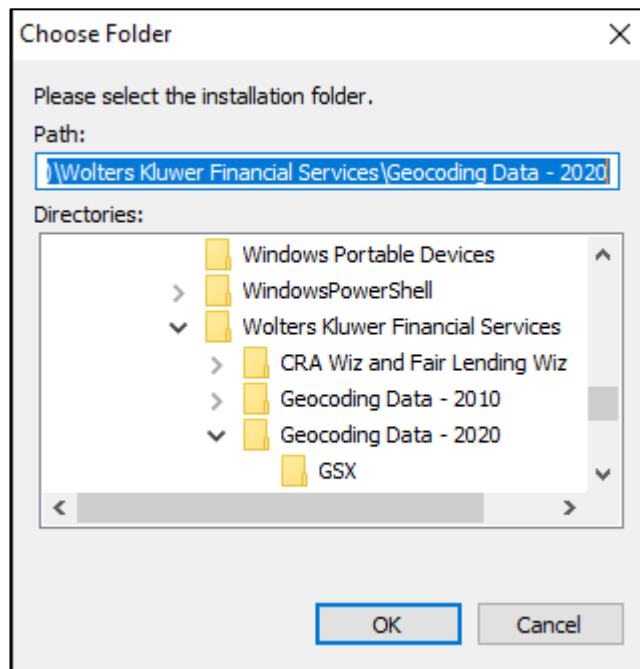
C:\Program Files (x86)\Wolters Kluwer Financial Services\Geocoding Data – 2020

...click the **Next** button. The installer displays the **Ready to the Install Program** screen. For procedures, go to **Page 7**.

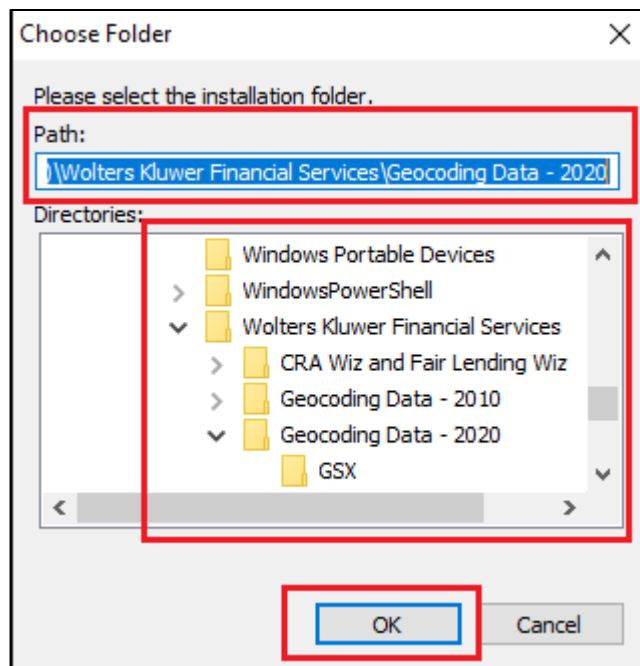
- If you want to select a location to install the data, follow these steps:
 - 3.1. Click the **Change...** button:



The installer displays the **Choose Folder** dialog box:



3.2. Use the dialog box controls to select an installation location:



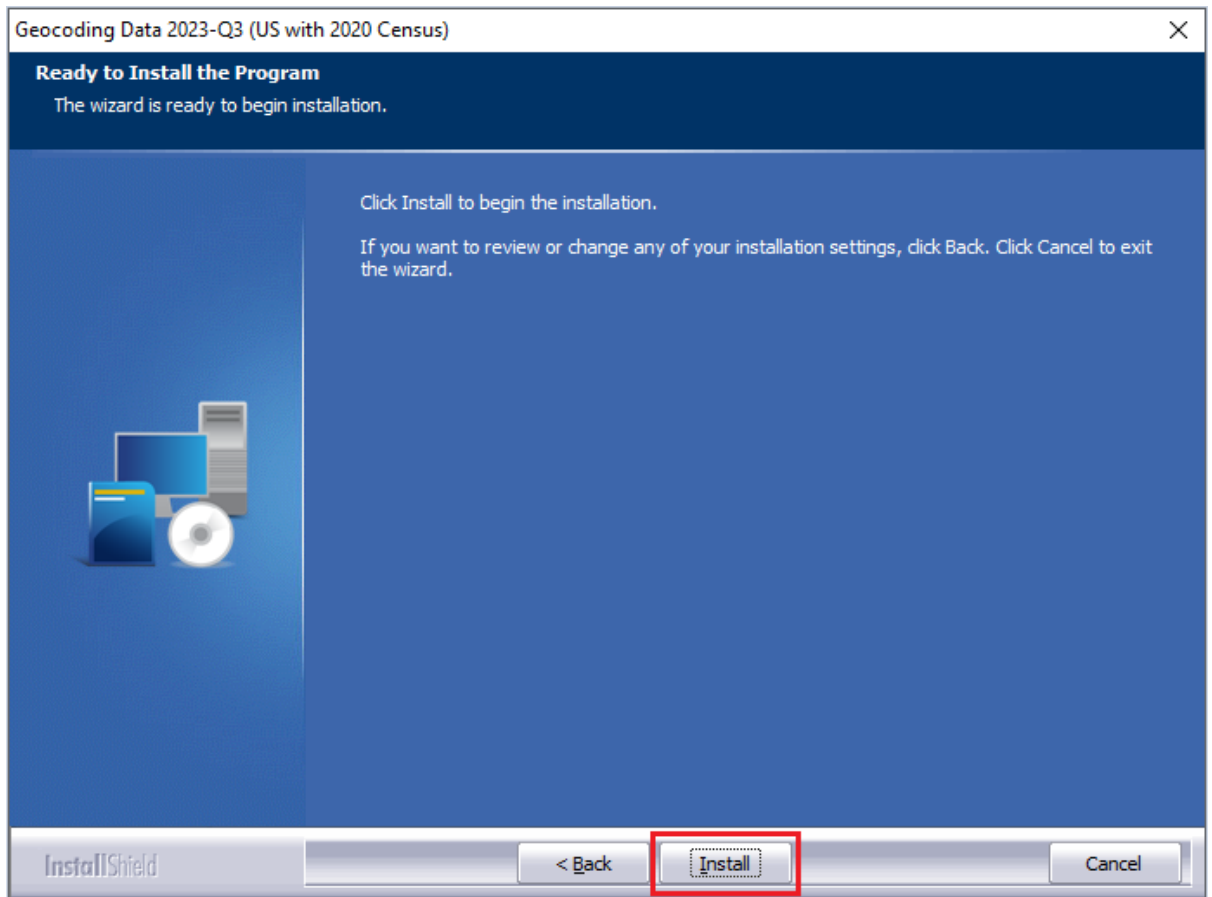
3.3. Click the **OK** button.

The installer closes the Choose Folder dialog box.

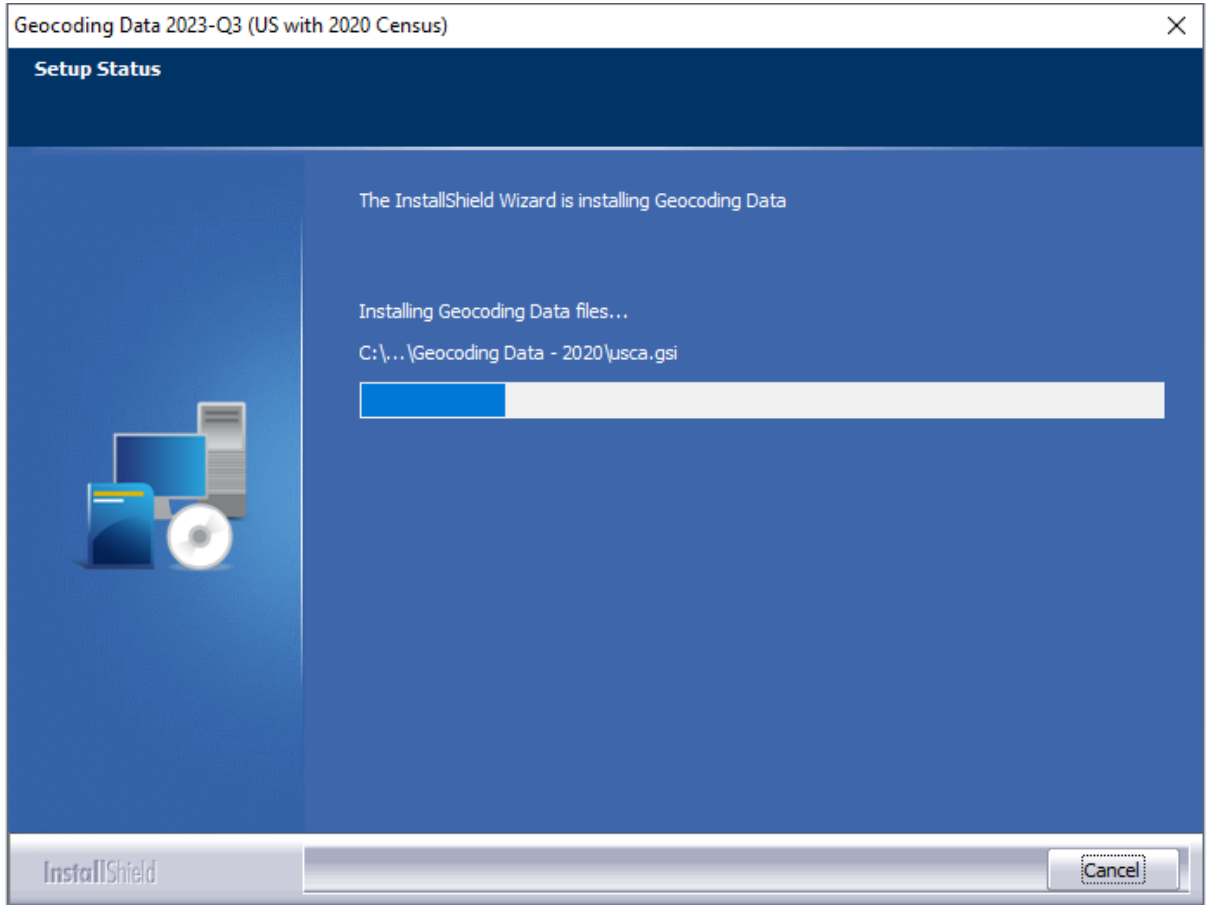
3.4. In the Choose Destination Location screen, click the **Next** button.

The installer displays the **Ready to Install the Program** screen.

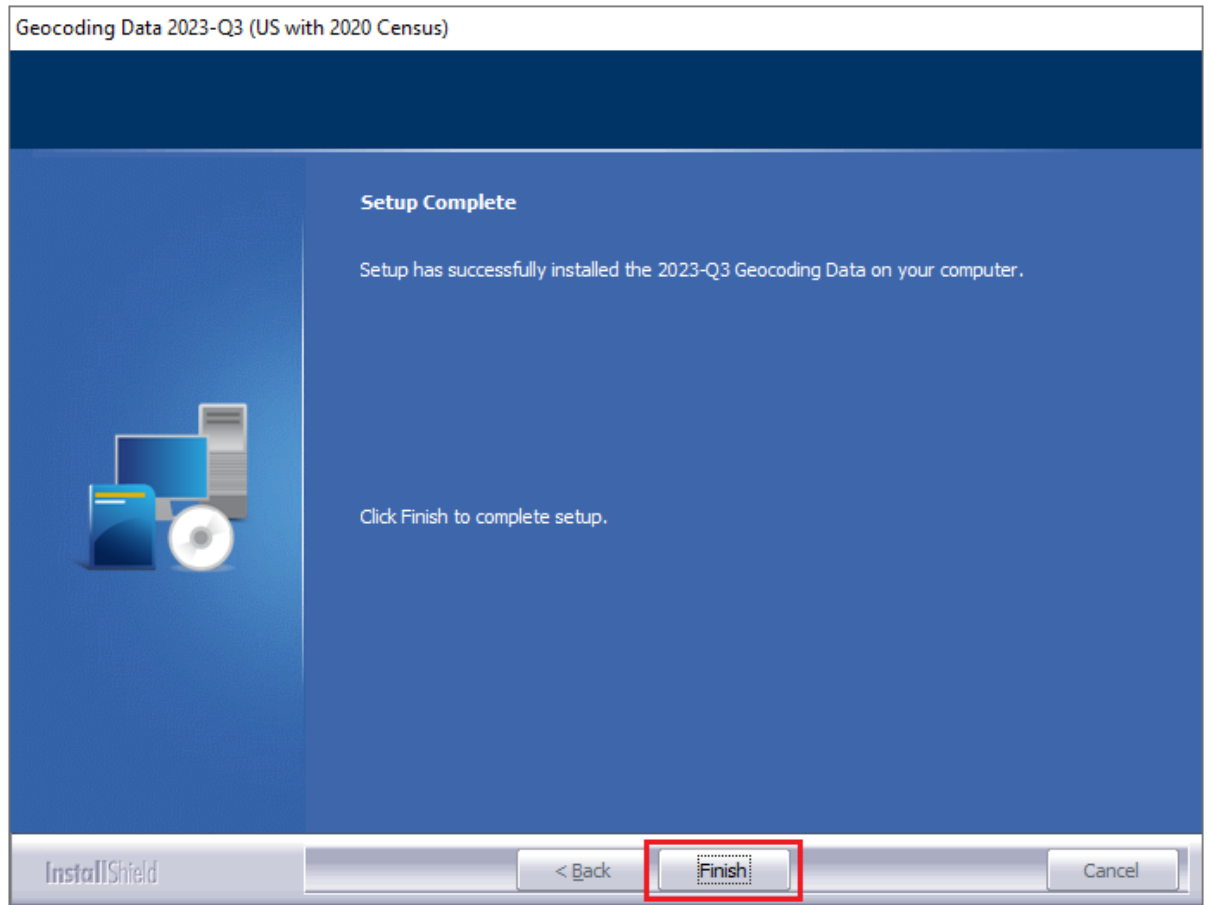
4. In the **Ready to Install the Program** screen, click the **Install** button to start the installation:



The installer displays the **Setup Status** screen:



When installation is complete, the installer displays the **Finish** screen:



5. Click the **Finish** button to exit.

3 Note about Geocoding Data Path

If you have installed Geocoding Data in a client/server environment **for the first time**, you need to update the geocoding data path to a **shared folder** (i.e., instead of the drive letter that the installer uses). This path can be updated using the **Data and Application Mapping** section of the CRA *Wiz* and Fair Lending *Wiz* **System Maintenance** screen (as seen below):

CRA Wiz Element	Location
Geocoding Data - 2020	C:\Program Files (x86)\Wolters Kluwer Financial Services\Geocoding Data - 2020
Geocoding Data - 2010	C:\Program Files (x86)\Wolters Kluwer Financial Services\Geocoding Data - 2010\2021 Q4

Important: Please note that if you do not have access to CRA *Wiz* and Fair Lending *Wiz* you can update these paths by modifying the **Geocoding Data – 2010** path in the **dbo.ElementLocations** table located in the **Objectstore** database:

ElementName	Location
1 Database File Location on Server	C:\Program Files (x86)\Wolters Kluwer Financial Services\CRA Wiz and Fair Lending Wiz\Data\
2 Geocoding Data - 2010	C:\Program Files (x86)\Wolters Kluwer Financial Services\Geocoding Data - 2010\2021 Q4
3 Geocoding Data - 2020	C:\Program Files (x86)\Wolters Kluwer Financial Services\Geocoding Data - 2020

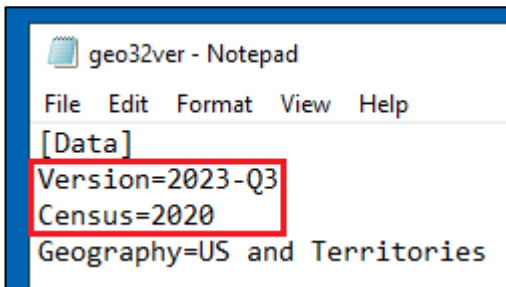
4 Confirming Installation

In **CRA Wiz** and **Fair Lending Wiz**, do the following:

1. Go to **Main > System Maintenance**.
2. Note the path listed next to the **Geocoding Data 2020** entry.

In **Windows**, do the following:

1. Launch **Windows Explorer**.
2. Use Windows Explorer to navigate to the path you noted in **Step 2** above.
3. Open the **geo32ver.txt** file in a text editor (such as **Notepad**). You should see the version below:



```
geo32ver - Notepad
File Edit Format View Help
[Data]
Version=2023-Q3
Census=2020
Geography=US and Territories
```

If you do not see this version information, either the install did not complete successfully or the path in System Maintenance is incorrect.

5 Testing Addresses

The addresses below can be used to test that your geocoding data has been updated. Each address will receive an exact parcel (B1) match with the latest geocoding data:

9896 N KENDALL DR
MIAMI FL 33176
MSA: 33124
STATE: 12
COUNTY: 86
TRACT: 0084.16

487 E MAIN ST
MOUNT KISCO NY 10549
MSA: 35614
STATE: 36
COUNTY: 119
TRACT: 0130.00

27441 COUNTY RD 106
GORIN MO 63543
MSA: 99999
STATE: 29
COUNTY: 199
TRACT: 4801.00

65 SYLVAN ACRES RD
INDIANA PA 15701
MSA: 99999
STATE: 42
COUNTY: 63
TRACT: 9606.00

2553 CAROLINE DRIVE
MILLBROOK AL 36054
MSA: 33860
STATE: 1
COUNTY: 51
TRACT: 0313.00

About Wolters Kluwer: Wolters Kluwer provides audit, risk and compliance solutions that help financial organizations improve efficiency and effectiveness across their enterprise. Whether complying with regulatory requirements, addressing a single key risk, or working toward a holistic risk management strategy, more than 15,000 customers worldwide count on Wolters Kluwer for a comprehensive and dynamic view of risk management and compliance. With more than 30 offices in over 20 countries, the company's prominent brands include: FRSGlobal, ARC Logics for Financial Services, PCI, Bankers Systems, VMP® Mortgage Solutions, AppOne®, GainsKeeper®, Capital Changes, NILS, AuthenticWeb™ and Uniform Forms™. Wolters Kluwer is a leading global information services and publishing company with annual revenues of (2011) €3.4 billion (\$4.7 billion) and approximately 19,000 employees worldwide. Please visit our website for more information.

Confidentiality Notice: This document contains privileged information that is intended for the addressee only. If you are not an intended recipient of the original sender (or responsible for delivering the message to such person), you are hereby notified that any review, disclosure, copying, distribution or the taking of any action in reliance of the contents of and links to attachments in the document is strictly prohibited. If you have received this in error, please immediately notify the sender and permanently delete any copies of this document (digital or paper) in your possession.

Wolters Kluwer

230 3rd Ave.
Waltham, MA
02453
800.261.3111