

A photograph of three business professionals in a meeting, looking at documents and writing on a clipboard. The image is overlaid with a blue gradient.

Consumer Compliance Solutions

CRA *Wiz* and Fair Lending *Wiz* 7.0: 2013 Peer Lender Groups

Release Notes and Installation Instructions

Release Date: November, 2014

Table of Contents

Overview 3

 Who should install 3

 Where to install..... 3

 Prerequisites 3

 Required permissions..... 3

 Required free space 3

 Approximate install time..... 3

 Confirming installation..... 3

Installation Instructions 4

 Welcome Screen 4

 Database Server Login Screen..... 5

 Ready to Install Screen..... 6

 Setup Status Screen 7

Setup Complete Screen..... 7

Appendix: 2013 Peer Groups List..... 8

Overview

The **2013 Peer Lender Groups** update adds 2013 Peer Lender Groups to CRA *Wiz* & Fair Lending *Wiz* Peer reporting. With this update, you can analyze a group of lenders as a single institution, or filter for institutions submitted by that lender.

Who should install

Any client licensed for Peer Mortgage Data should install this update. To determine if you are licensed for Peer Mortgage Data, go to the **System Maintenance** screen and select **License and Access Management**.

Where to install

This update should be applied to the SQL server where CRA *Wiz* databases are installed. No client or application-side installation is required.

Prerequisites

CRA *Wiz* and Fair Lending *Wiz* 6.9 or 7.0 is required to install this update. To check your CRA *Wiz* and Fair Lending *Wiz* version, go to the program menu bar and select **Help > About CRA *Wiz***. Build numbers starting with "69" or "70" are acceptable.

Required permissions

This update is installed as a single database, so both Windows read/write permissions and SQL Server database creation permissions are required. Wolters Kluwer Financial Services recommends that the user running the install have both a Windows admin and SQL Server admin login credentials.

Required free space

A few megabytes (MB).

Approximate install time

Less than five (5) seconds, depending on system configuration.

Confirming installation

Once the installation is complete, you can verify the installation setting a Peer file as the active file. Then go to **Analysis > Reports**. Click **Tools > Manage Lender Groups**. You should see 40 groups, starting with 2013.

Installation Instructions

To install 2013 Peer Lender Groups, follow these steps:

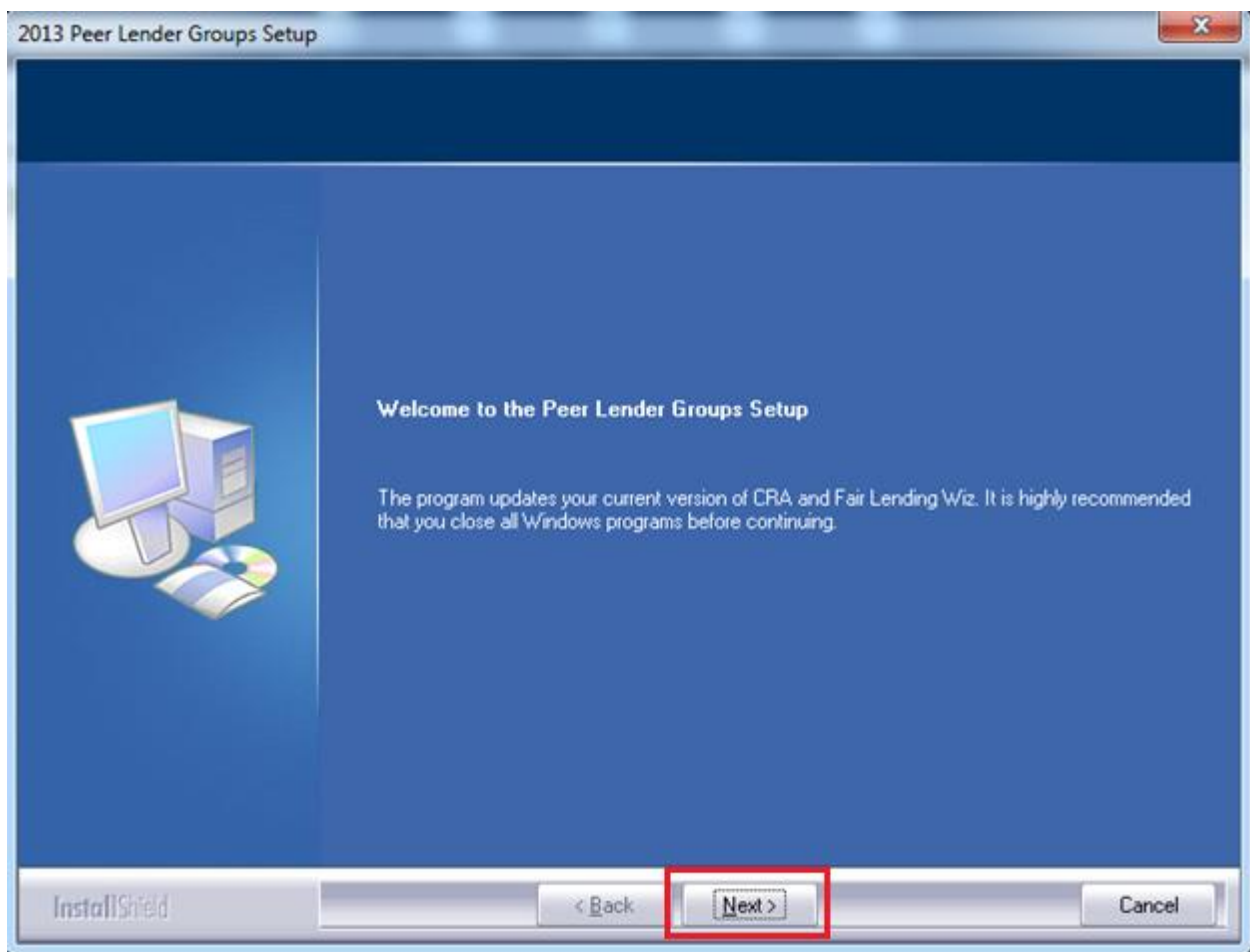
1. After downloading the update, locate and double-click the **2013PeerLenderGroups** installation file.

The installer displays the **Welcome** screen.

2. Follow the directions for each of the following screens.

Welcome Screen

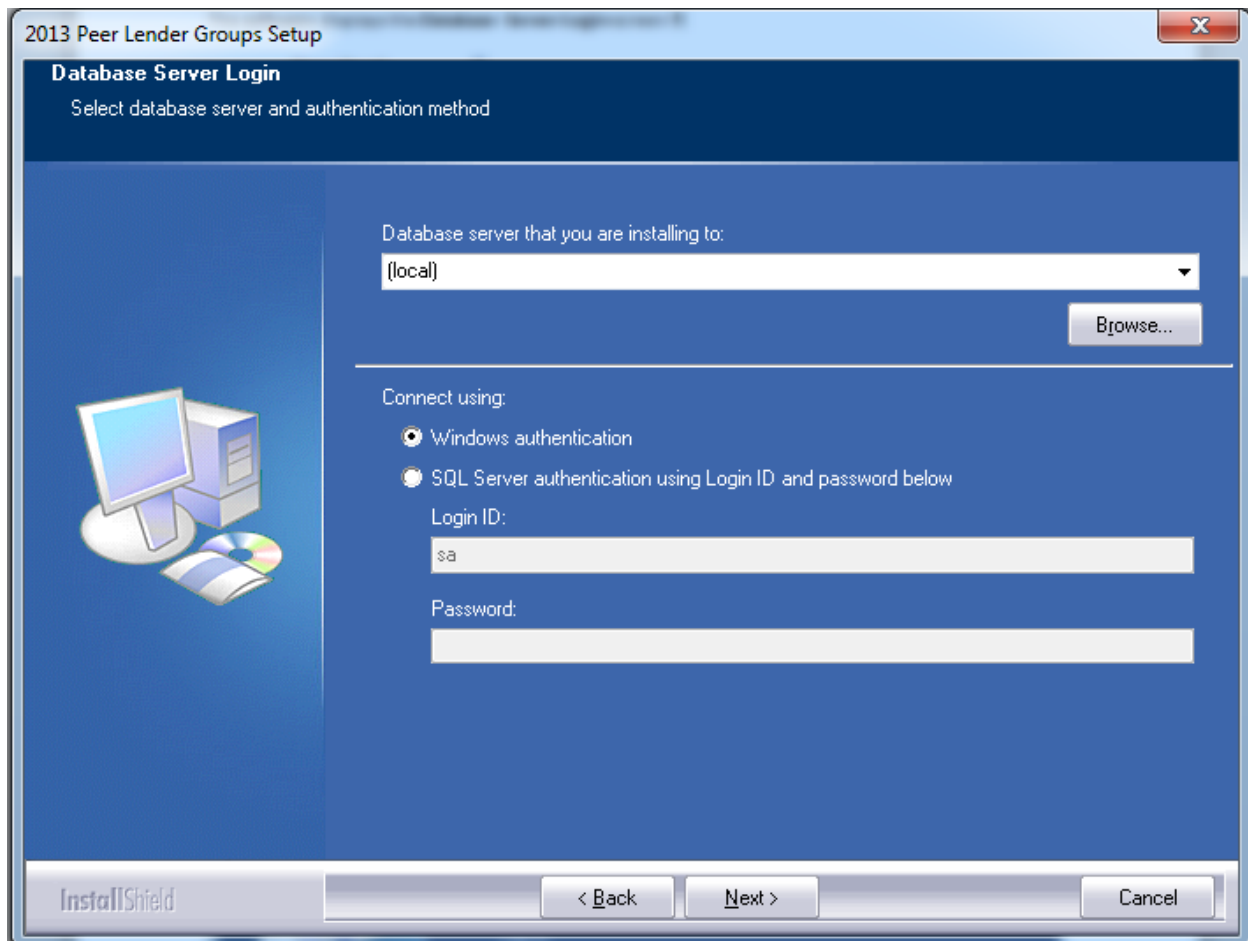
Click the **Next** button:



The software displays the **Database Server Login** screen.

Database Server Login Screen

You use the **Database Server Login** screen to specify the SQL Server to which you are installing to, and also SQL Server login information.



To configure SQL Server options, follow these steps:

1. Do one of the following:
 - In the **Database server that you are installing to** field, enter the **SQL Server name and instance** to which you are installing the data.

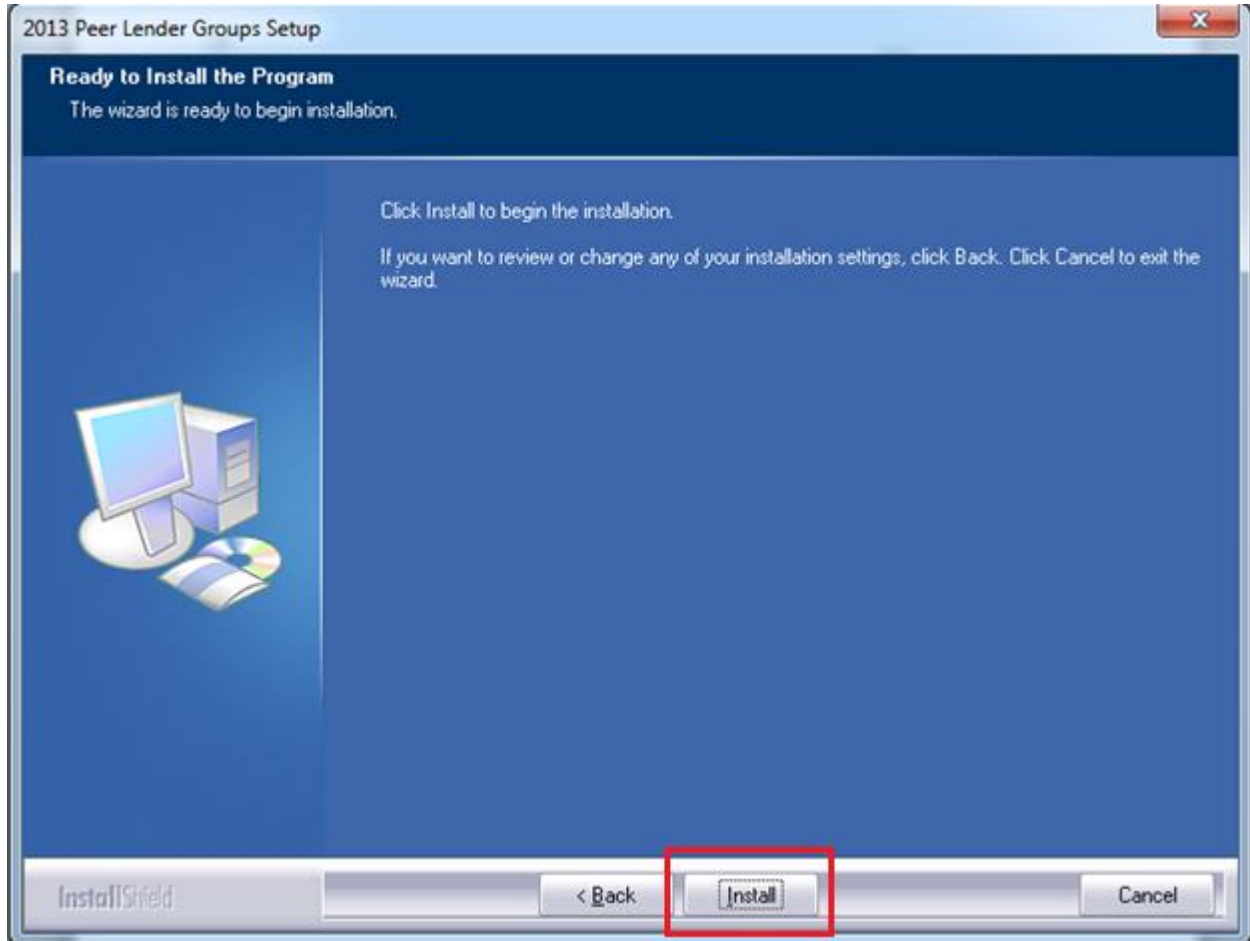
Example: SVRBOS01\SQLEXPRESS
 - Click the **Browse** button and in the resultant dialog box, select the SQL Server.
2. Choose one of the following authentication options:
 - Use Windows Authentication
 - Use SQL Server Authentication - If you select this option, you must also enter your SQL Server account **User Name** and **Password** in the **User Name** and **Password** fields.

3. Click the **Next** button.

The software displays the **Ready to Install** screen.

Ready to Install Screen

To begin installing the data, click the **Install** button:



The installer displays the **Setup Status** screen.

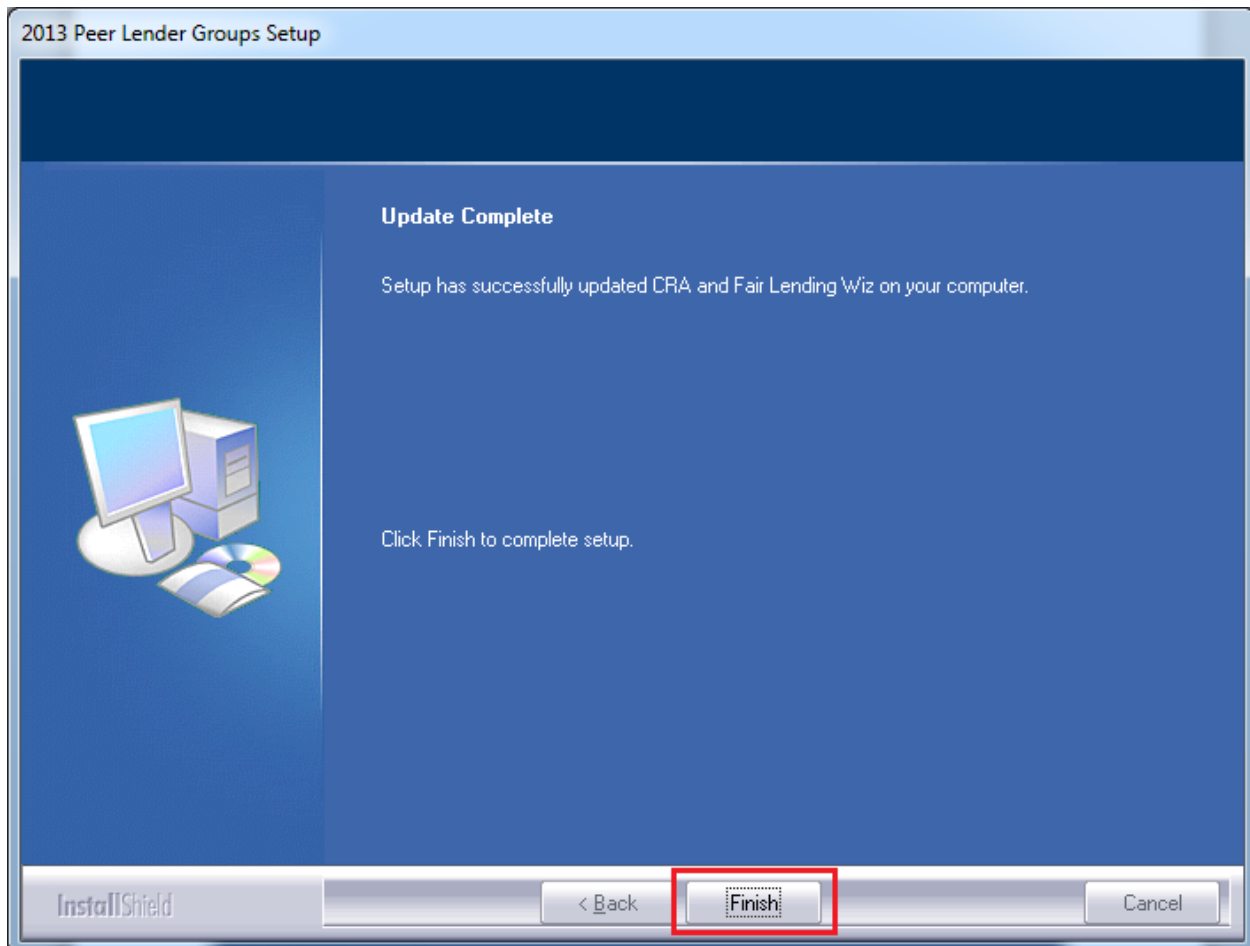
Setup Status Screen

The **Setup Status** screen displays a progress bar that reports the progress of the installation:

When installation is complete, the installer displays the **Setup Complete** screen.

Setup Complete Screen

Click the **Finish** button:



Installation is complete.

Appendix: 2013 Peer Groups List

2013 HMDA Lender Groups	2013 CRA Lender Groups
2013 PEER HMDA - ALLY FINANCIAL	2013 PEER CRA - ALLY FINANCIAL
2013 PEER HMDA - BANK OF AMERICA NA	2013 PEER CRA - AMERICAN EXPRESS
2013 PEER HMDA - BBT	2013 PEER CRA - BANK OF AMERICA
2013 PEER HMDA - CHASE	2013 PEER CRA - BBT
2013 PEER HMDA - CITIGROUP	2013 PEER CRA - CAPITAL ONE FIN. CORP.
2013 PEER HMDA - DISCOVER BANK	2013 PEER CRA - CHASE
2013 PEER HMDA - EVERBANK	2013 PEER CRA - CITIGROUP
2013 PEER HMDA - FIFTH THIRD BANK	2013 PEER CRA - COMPASS BANK
2013 PEER HMDA - FLAGSTAR BANK	2013 PEER CRA - DISCOVER BANK
2013 PEER HMDA - HUNTINGTON NATIONAL BANK	2013 PEER CRA - FIRST NAT'L BANK OF OMAHA
2013 PEER HMDA - MT Bank	2013 PEER CRA - GE CAPITAL
2013 PEER HMDA - PLAINS CAPITAL BANK	2013 PEER CRA - JOHN DEERE FINANCIAL
2013 PEER HMDA - PNC BANK NA	2013 PEER CRA - KEYBANK
2013 PEER HMDA - RBS CITIZENS	2013 PEER CRA - PNC BANK
2013 PEER HMDA - REGIONS BANK	2013 PEER CRA - REGIONS BANK
2013 PEER HMDA - SUNTRUST	2013 PEER CRA - SUNTRUST
2013 PEER HMDA - TD BANK	2013 PEER CRA - TD BANK
2013 PEER HMDA - US BANK	2013 PEER CRA - TEXAS CAPITAL BANK
2013 PEER HMDA - USAA BANK	2013 PEER CRA - US BANK
2013 PEER HMDA - WELLS FARGO	2013 PEER CRA - WELLS FARGO

About Wolters Kluwer Financial Services - Wolters Kluwer Financial Services provides audit, risk and compliance solutions that help financial organizations improve efficiency and effectiveness across their enterprise. Whether complying with regulatory requirements, addressing a single key risk, or working toward a holistic risk management strategy, more than 15,000 customers worldwide count on Wolters Kluwer Financial Services for a comprehensive and dynamic view of risk management and compliance. With more than 30 offices in over 20 countries, the company's prominent brands include: FRSGlobal, ARC Logics for Financial Services, PCi, Bankers Systems, VMP® Mortgage Solutions, AppOne®, GainsKeeper®, Capital Changes, NILS, AuthenticWeb™ and Uniform Forms™. Wolters Kluwer Financial Services is part of Wolters Kluwer, a leading global information services and publishing company with annual revenues of (2011) €3.4 billion (\$4.7 billion) and approximately 19,000 employees worldwide. Please visit our website for more information.

Wolters Kluwer Financial Services
130 Turner Street
Building 3, 4th Floor
Waltham, MA 02453
800.261.3111

© 2014 Wolters Kluwer Financial Services