

Installing 2012 Peer Lender Groups

The **2012 Peer Lender Groups** update adds the 2012 Peer Lender Groups to CRA *Wiz* & Fair Lending *Wiz* Peer reporting. With this update, you can analyze a group of lenders as a single institution, or filter for institutions submitted by that lender.

The following 2011 PEER Groups no longer appear in 2012:

- ✓ HMDA
 - ✓ CAPITAL ONE FINANCIAL CORPORATION
 - ✓ FRANKLIN AMERICAN MORTGAGE
 - ✓ HSBC
 - ✓ METLIFE
- ✓ CRA
 - ✓ EVERBANK
 - ✓ FIFTH THIRD BANK
 - ✓ FLAGSTAR BANK
 - ✓ HSBC
 - ✓ HUNTINGTON NATIONAL BANK
 - ✓ NEW YORK COMMUNITY BANK
 - ✓ RBS BANK
 - ✓ SUNTRUST

The following PEER Groups are new in 2012:

- ✓ HMDA
 - ✓ DISCOVER BANK (subsidiary HOME LOAN CENTER)
 - ✓ HUNTINGTON NATIONAL BANK
 - ✓ PLAINS CAPITAL BANK
 - ✓ PNC BANK NA
- ✓ CRA
 - ✓ COMPASS BANK
 - ✓ DISCOVER BANK

- ✓ FIRST NATIONAL BANK OF OMAHA
- ✓ GE CAPITAL
- ✓ HSBC BANK
- ✓ JOHN DEERE FINANCIAL
- ✓ KEYBANK
- ✓ PNC BANK

The update requires the following:

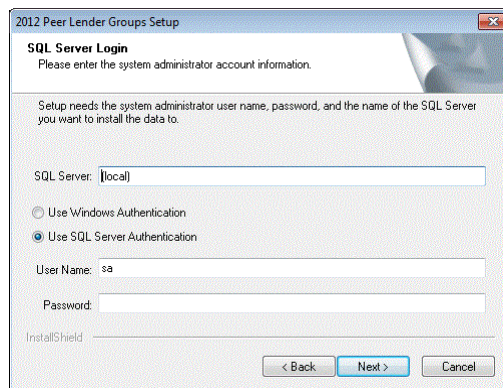
- ✓ CRA *Wiz* & Fair Lending *Wiz* 6.8 or later.
- ✓ Installation on your *Wiz* **Database Server** only.
- ✓ Installation of the 2012 Peer Mortgage Data and/or 2012 Peer Small Business Data.

To install the 2012 Peer Lender Groups update, follow these steps:

1. After downloading the update, double-click the **2012PeerLenderGroups** icon.

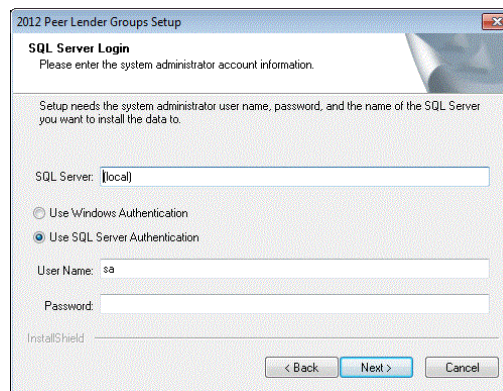
The software displays the **Welcome** screen.

2. Click the **Next** button.



The software displays the **SQL Server Login** screen.

3. In the **SQL Server** field, enter the name of the SQL Server to which you are installing the data.
4. Choose one of the following authentication options:

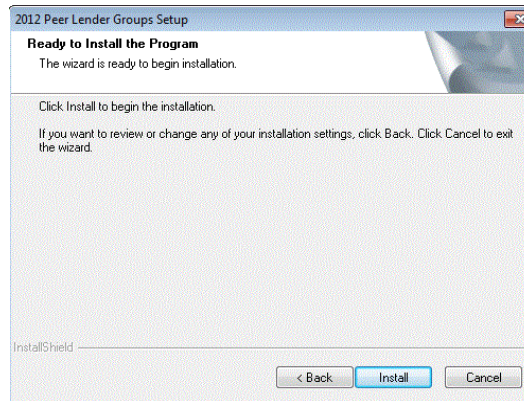


- ✓ Use Windows Authentication
- ✓ Use SQL Server Authentication - If you select this option, you must also enter your SQL Server account User Name and Password in the **User Name** and **Password** fields.

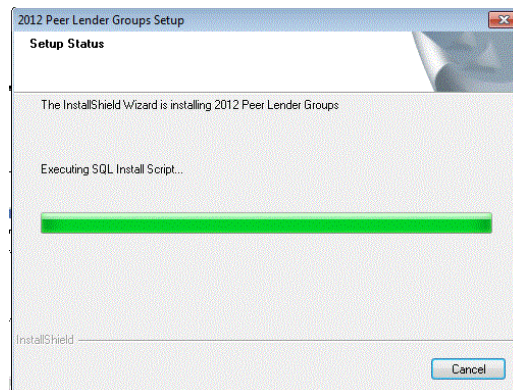
5. Click the **Next** button.

The software displays the **Ready to Install the Program** screen.

6. Click the **Install** button.



The installer runs the update.



The installer displays the **Update Complete** screen.

7. Click the **Finish** button.

Installation is complete.

